

NO.	R	A	L	T
A	650'	38°15'08"	433.96'	225.41'
B	412'	73°00'00"	524.93'	304.86'
C	488'	63°00'00"	536.58'	299.05'
D	826'	14°19'27"	206.50'	103.79'
E	1000'	33°11'56"	579.43'	298.10'
F	1158.59'	28°25'33"	574.80'	293.45'
G	1130'	05°45'07"	113.44'	56.77'
H	135'	273°06'32"	643.50'	
I	300'	36°14'55"	189.80'	98.20'
J	1200'	68°14'42"	1429.32'	813.15'
K	350'	137°30'00"	839.94'	900.02'
L	300'	53°15'00"	278.81'	150.39'
M	3000'	06°52'55"	360.34'	180.39'
N	300'	14°04'11"	73.67'	37.02'

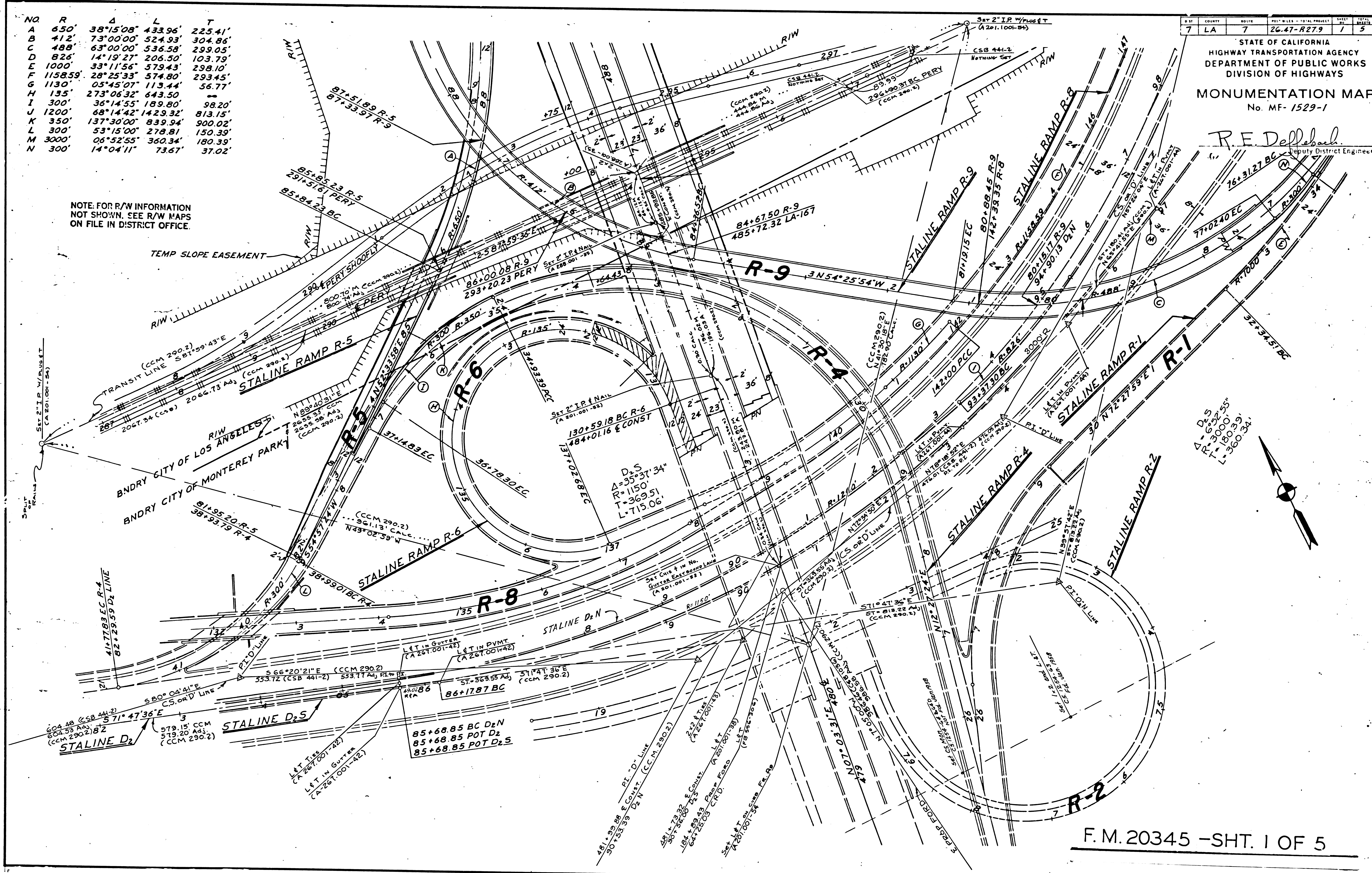
NOTE FOR R/W INFORMATION
NOT SHOWN, SEE R/W MAPS
ON FILE IN DISTRICT OFFICE.

SHEET NO.	COUNTY	ROUTE	POST MILES - TOTAL PROJECT	SHEET NO.	TOTAL SHEETS
7	LA	7	26.47-R27.9	1	5

STATE OF CALIFORNIA
HIGHWAY TRANSPORTATION AGENCY
DEPARTMENT OF PUBLIC WORKS
DIVISION OF HIGHWAYS

MONUMENTATION MAP
No. MF-1529-1

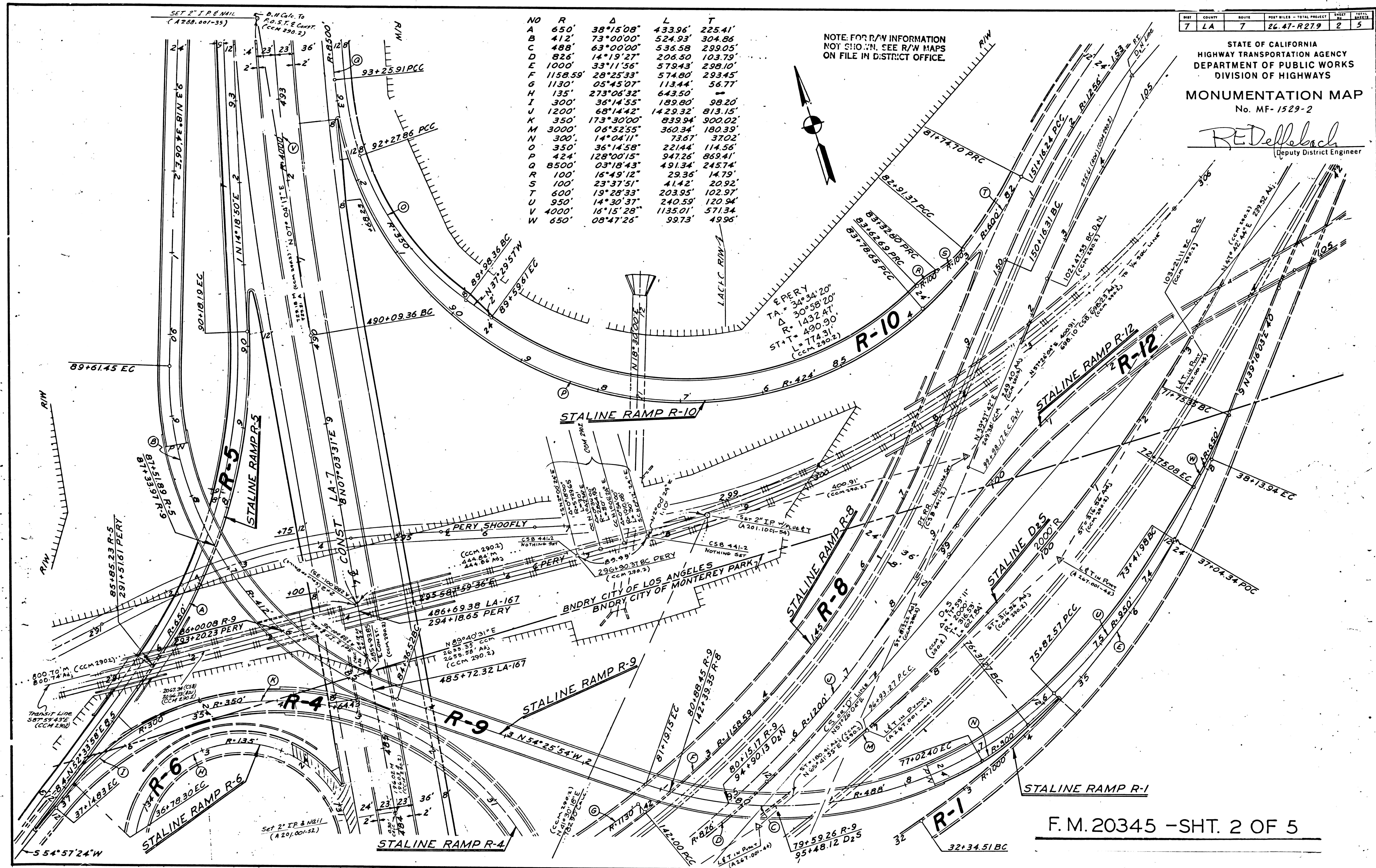
R.E. Dellebach
Deputy District Engineer



F.M. 20345 - SHT. 1 OF 5

156-18

20345-1



En. 70001 2

NO	R	Δ	L	T
A	650'	38°15'08"	433.96'	225.41'
B	412'	73°00'00"	524.93'	304.86'
O	350'	36°14'58"	221.44'	114.56'
P	424'	128°00'15"	947.26'	869.41'
Q	8500'	03°18'43"	491.34'	245.74'
V	4000'	16°15'28"	1135.01'	571.34'
X	1888'	09°37'22"	317.09'	158.92'
Y	1000'	05°49'18"	101.61'	50.85'

NOTE: FOR R/W INFORMATION
NOT SHOWN, SEE R/W MAPS
ON FILE IN DISTRICT OFFICE.

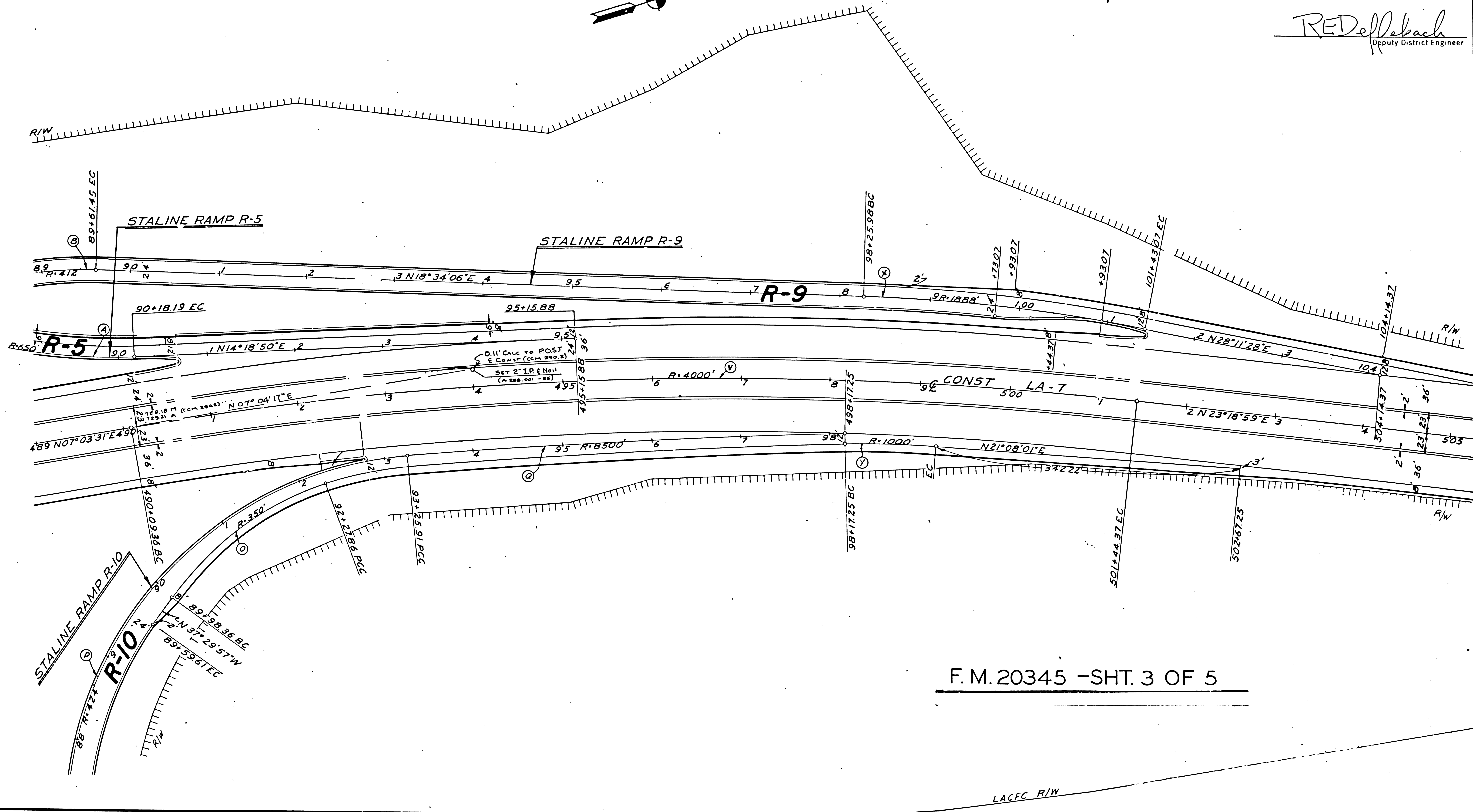
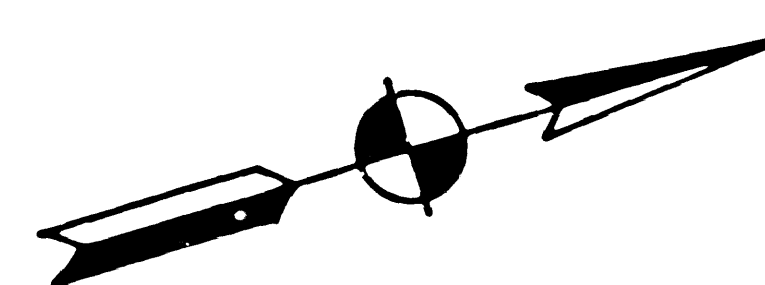
DIST	COUNTY	ROUTE	POST MILES - TOTAL PROJECT	SHEET NO.	TOTAL SHEETS
7	LA	7	26.47-R27.9	3	5

STATE OF CALIFORNIA
HIGHWAY TRANSPORTATION AGENCY
DEPARTMENT OF PUBLIC WORKS
DIVISION OF HIGHWAYS

MONUMENTATION MAP

No. MF-1529-3

REDellbach
Deputy District Engineer



F.M. 20345 -SHT. 3 OF 5

156-18

F.M. 20345

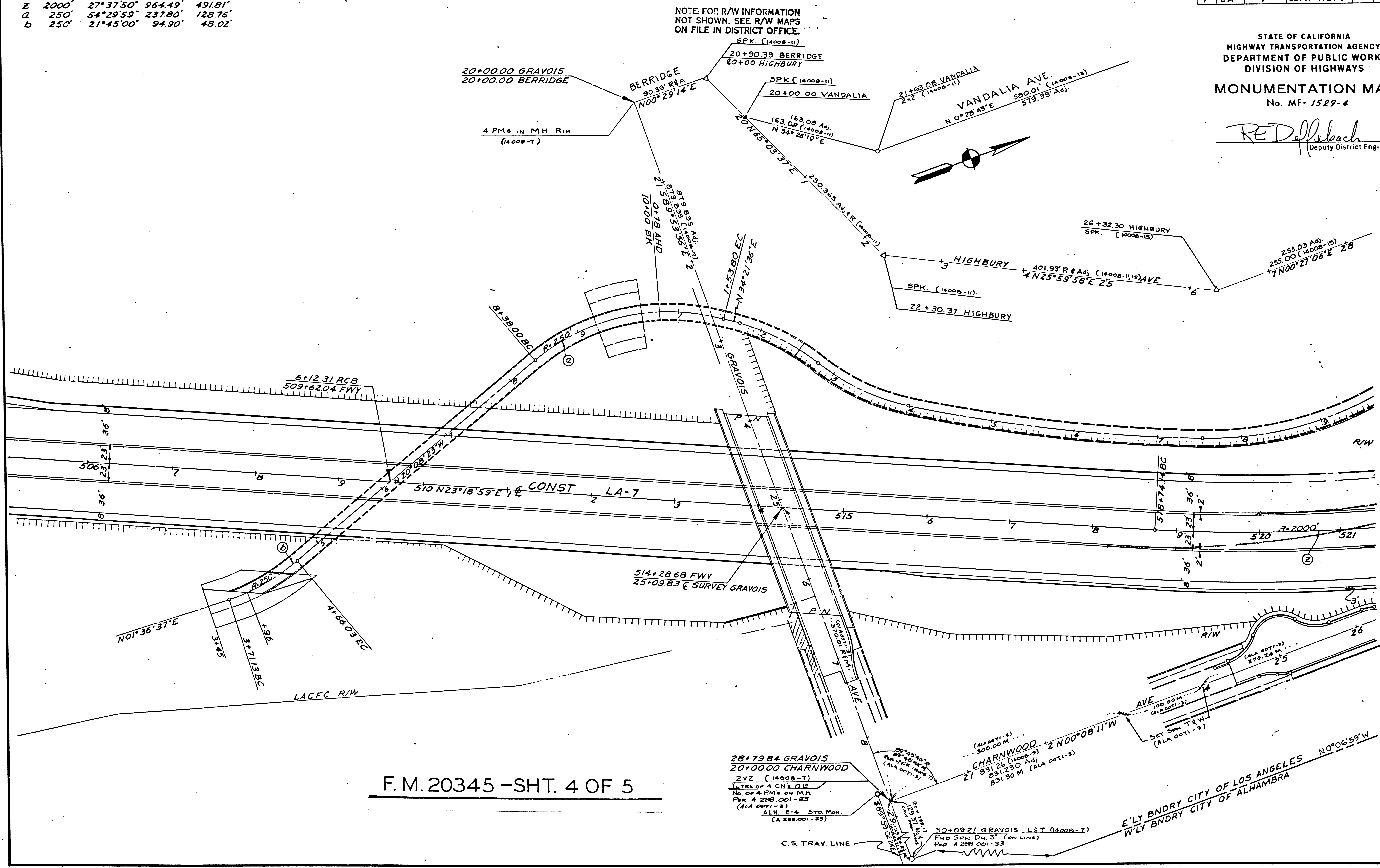
NO.	R.	Δ	L	T
Z	2000'	27°37'50"	964.49'	491.81'
d	250'	54°29'59"	237.80'	128.76'
b	250'	21°45'00"	94.90'	48.02'

DIST.	COUNTY	ROUTE	POST MILES - TOTAL PROJECT	SHEET NO.	TOTAL SHEETS
7	LA	7	26.47 - R 27.9	4	5

STATE OF CALIFORNIA
HIGHWAY TRANSPORTATION AGENCY
DEPARTMENT OF PUBLIC WORKS
DIVISION OF HIGHWAYS
MONUMENTATION MAP
No. MF-1529-4

REDallebach
Deputy District Engineer

NOTE: FOR R/W INFORMATION
NOT SHOWN, SEE R/W MAPS
ON FILE IN DISTRICT OFFICE.



F.M. 20345 - SHT. 4 OF 5

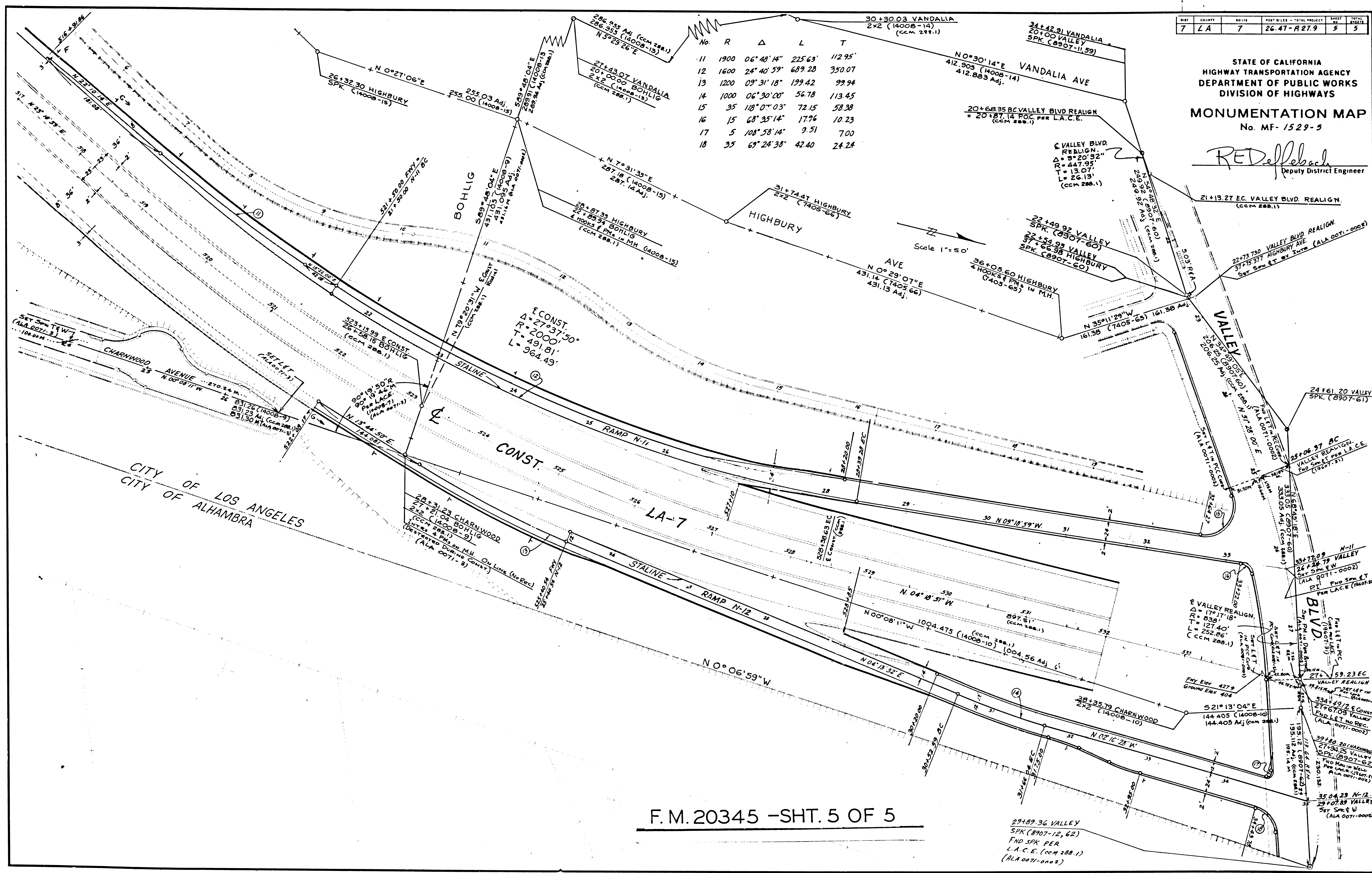
156-1A

DIST	COUNTY	ROUTE	POST MILES - TOTAL PROJECT	SHEET NO.	TOTAL SHEETS
7	LA	7	26.47-R279	5	5

STATE OF CALIFORNIA
HIGHWAY TRANSPORTATION AGENCY
DEPARTMENT OF PUBLIC WORKS
DIVISION OF HIGHWAYS
MONUMENTATION MAP
No. MF-1529-5

REDellebach
Deputy District Engineer

No.	R	Δ	L	T
11	1900	06° 48' 14"	225.63	112.95'
12	1600	24° 40' 59"	689.28	350.07
13	1200	09° 31' 18"	199.42	99.94
14	1000	06° 30' 00"	56.78	113.45
15	35	10° 07' 03"	72.15	58.38
16	15	68° 35' 14"	17.96	10.23
17	5	108° 58' 14"	9.51	7.00
18	35	69° 24' 38"	42.40	24.24



CITY OF LOS ANGELES
CITY OF ALHAMBRA

F.M. 20345 -SHT. 5 OF 5

156-18