

SHEET NO.	TOTAL SHEETS	POST MILES - TOTAL PROJECT	ROUTE	COUNTY	DIST.
1	8	5.98 - 7.57	405	LA	7

STATE OF CALIFORNIA
HIGHWAY TRANSPORTATION AGENCY
DEPARTMENT OF PUBLIC WORKS
DIVISION OF HIGHWAYS
MONUMENTATION MAP
No. MF-1906-1

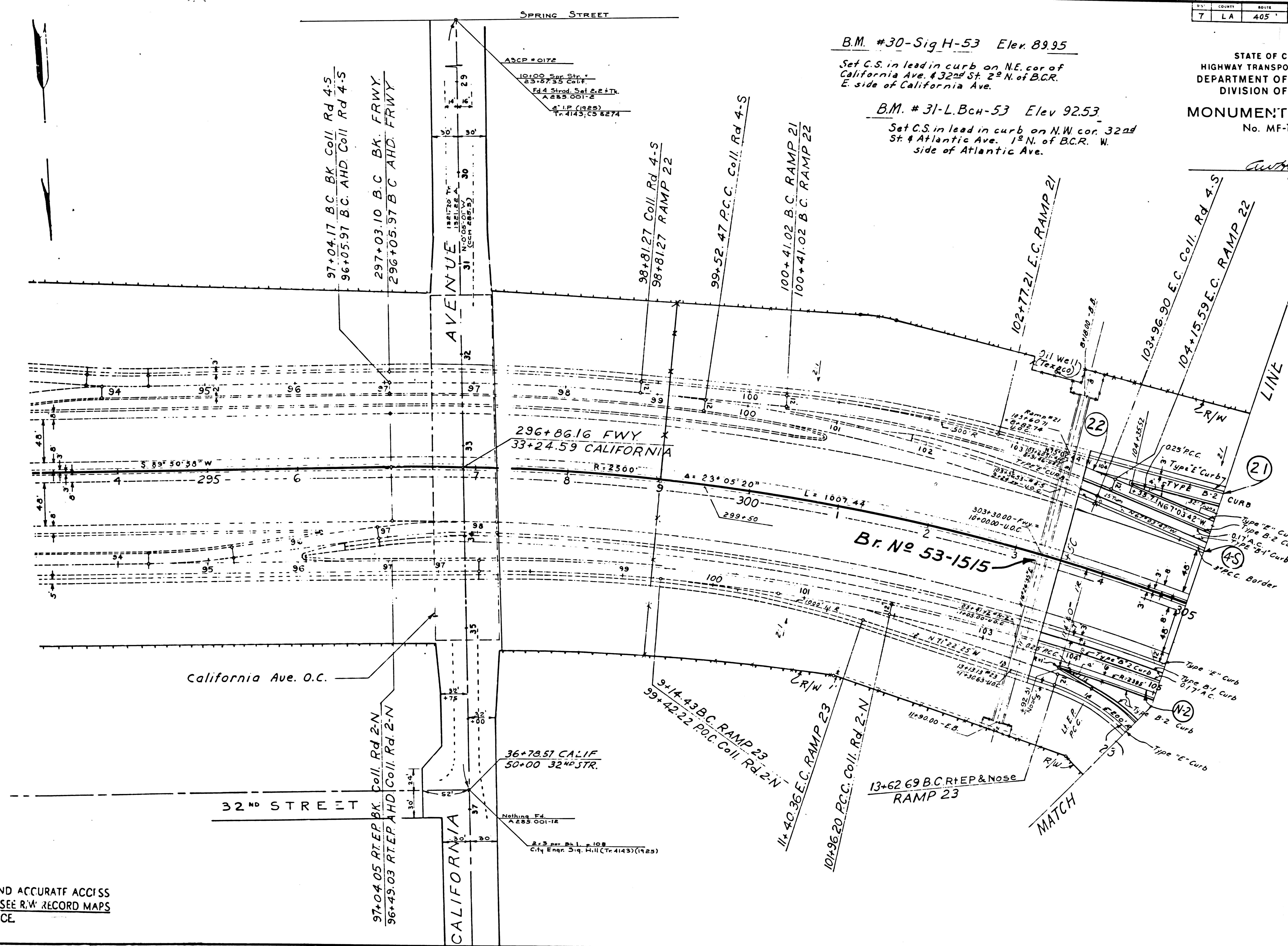
C. W. H. H.
Deputy District Engineer

B.M. #30-Sig H-53 Elev. 89.95

Set C.S. in lead in curb on N.E. cor of California Ave. & 32nd St. 2nd N. of B.C.R. E. side of California Ave.

B.M. #31-L.Bch-53 Elev. 92.53

Set C.S. in lead in curb on N.W. cor. 32nd St. & Atlantic Ave. 1st N. of B.C.R. W. side of Atlantic Ave.



FOR R/W DATA AND ACCURATE ACCESS DETERMINATION, SEE R/W RECORD MAPS AT DISTRICT OFFICE.

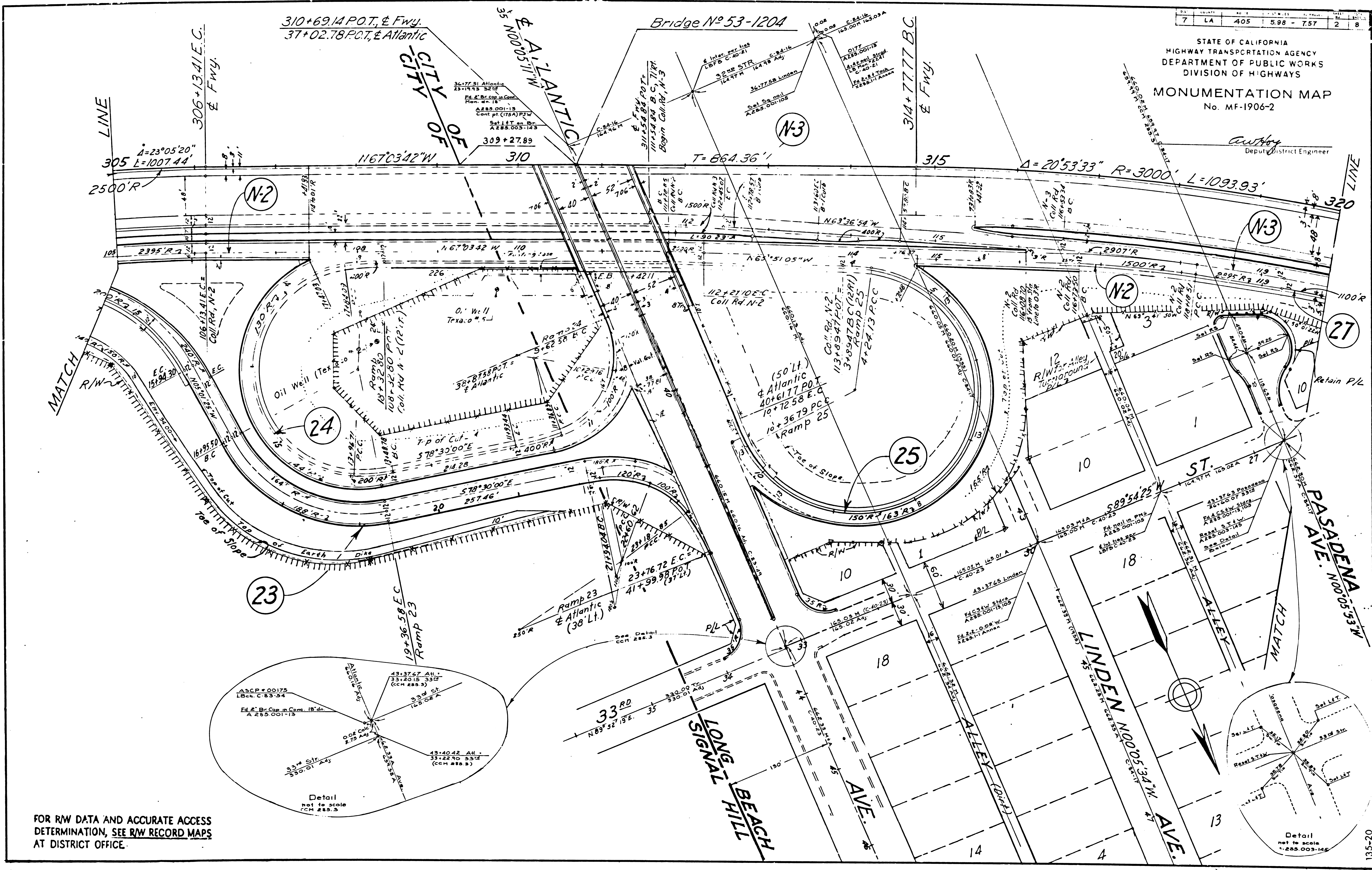
1.35-20

F.M. 20348-1

7	LA	405	5.98	- 7.57	2	8
---	----	-----	------	--------	---	---

STATE OF CALIFORNIA
HIGHWAY TRANSPORTATION AGENCY
DEPARTMENT OF PUBLIC WORKS
DIVISION OF HIGHWAYS
MONUMENTATION MAP
No. MF-1906-2

Anthony
Deputy District Engineer

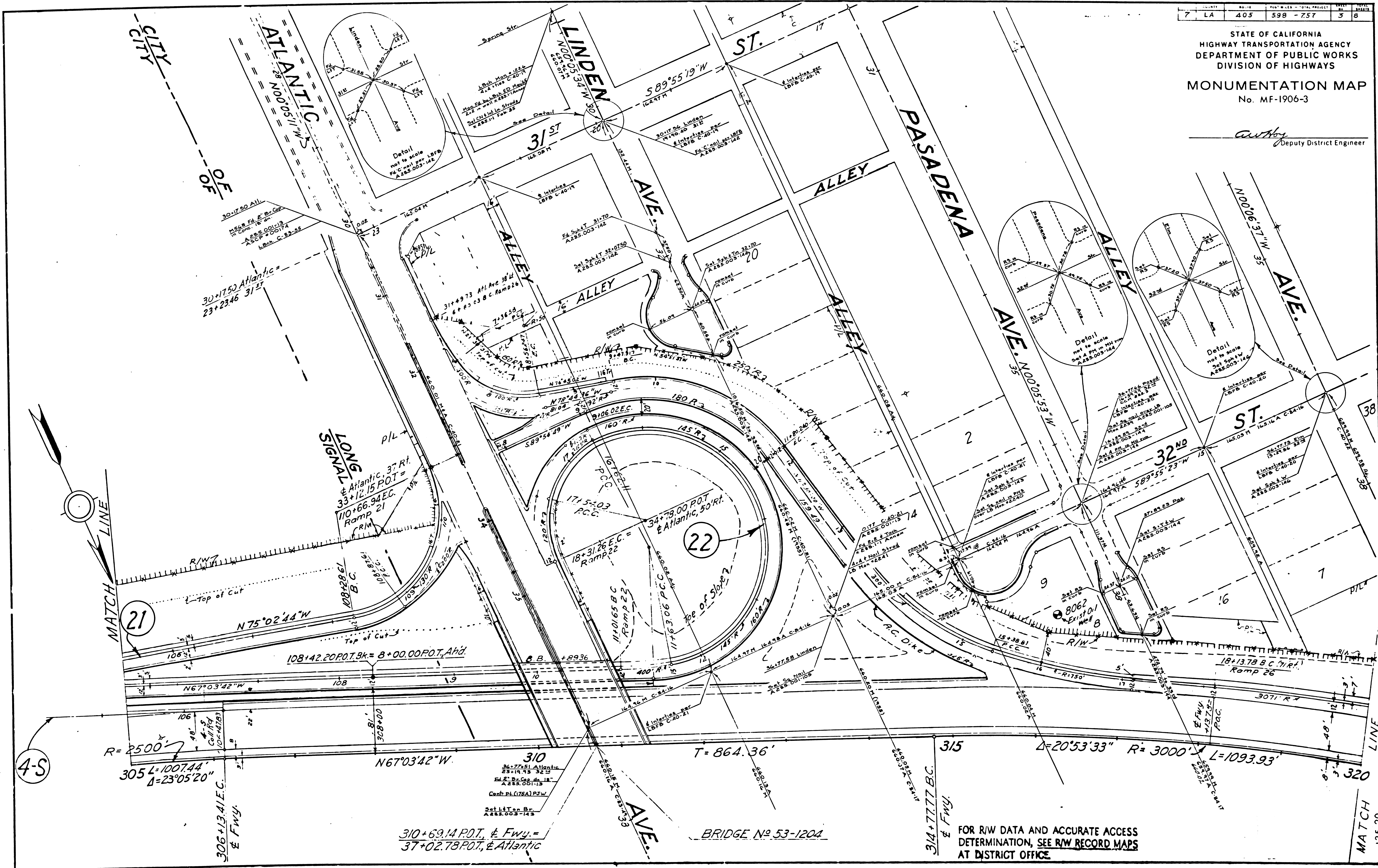


FOR R/W DATA AND ACCURATE ACCESS
DETERMINATION, SEE R/W RECORD MAPS
AT DISTRICT OFFICE.

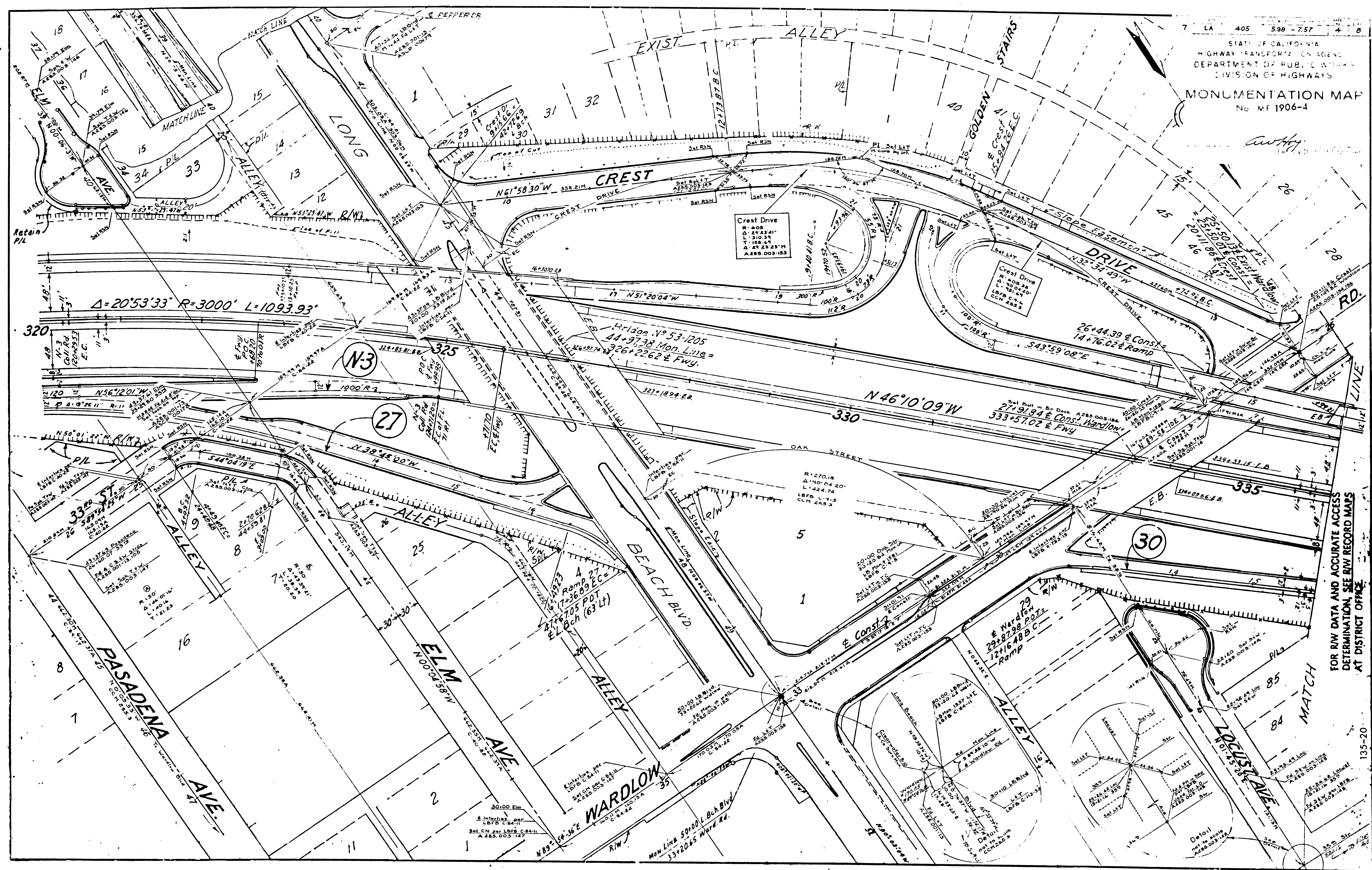
7	LA	405	598	-757	3	8
---	----	-----	-----	------	---	---

STATE OF CALIFORNIA
HIGHWAY TRANSPORTATION AGENCY
DEPARTMENT OF PUBLIC WORKS
DIVISION OF HIGHWAYS
MONUMENTATION MAP
No. MF-1906-3

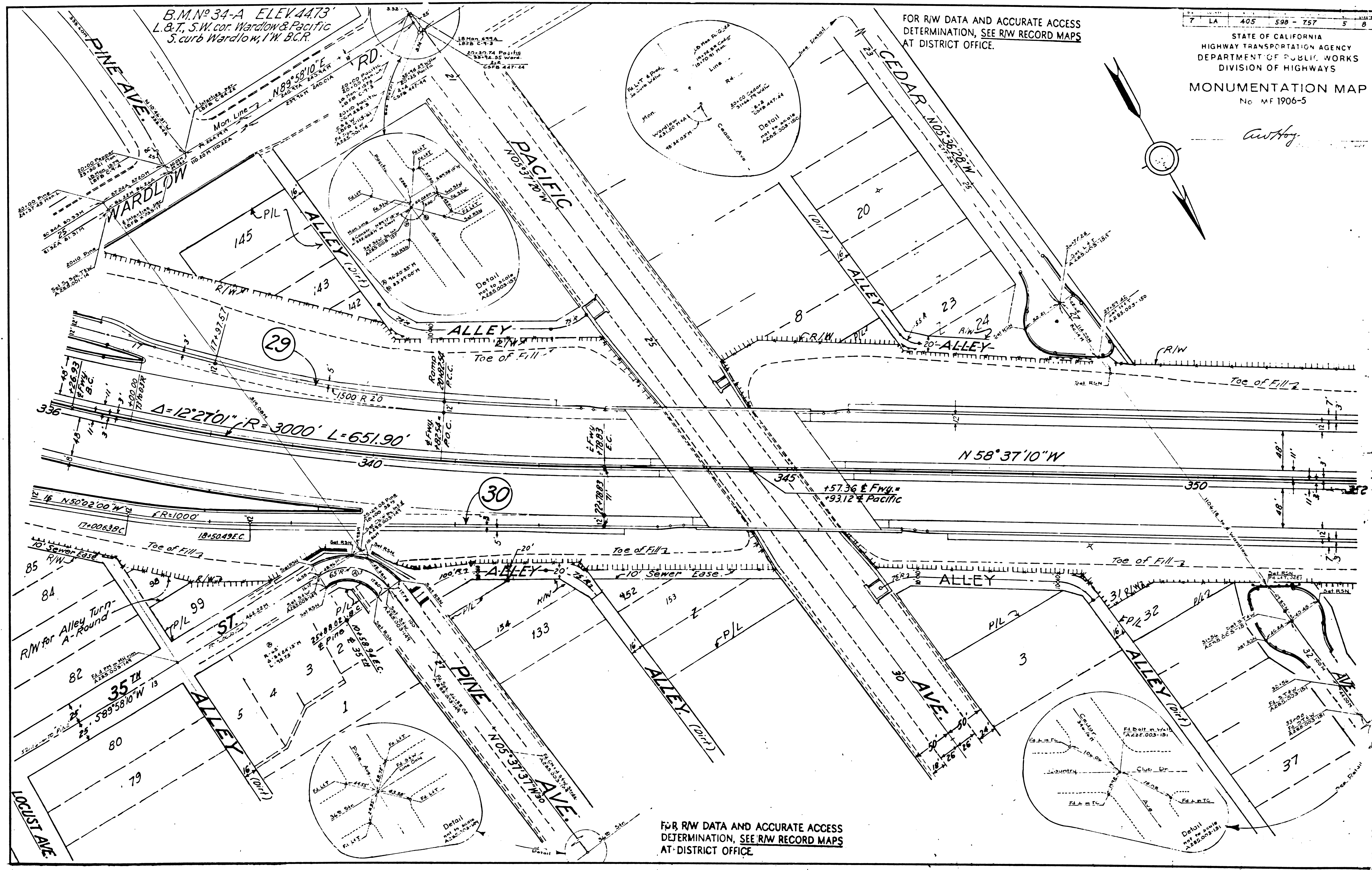
Anthony
Deputy District Engineer



FOR R/W DATA AND ACCURATE ACCESS DETERMINATION, SEE R/W RECORD MAPS AT DISTRICT OFFICE.



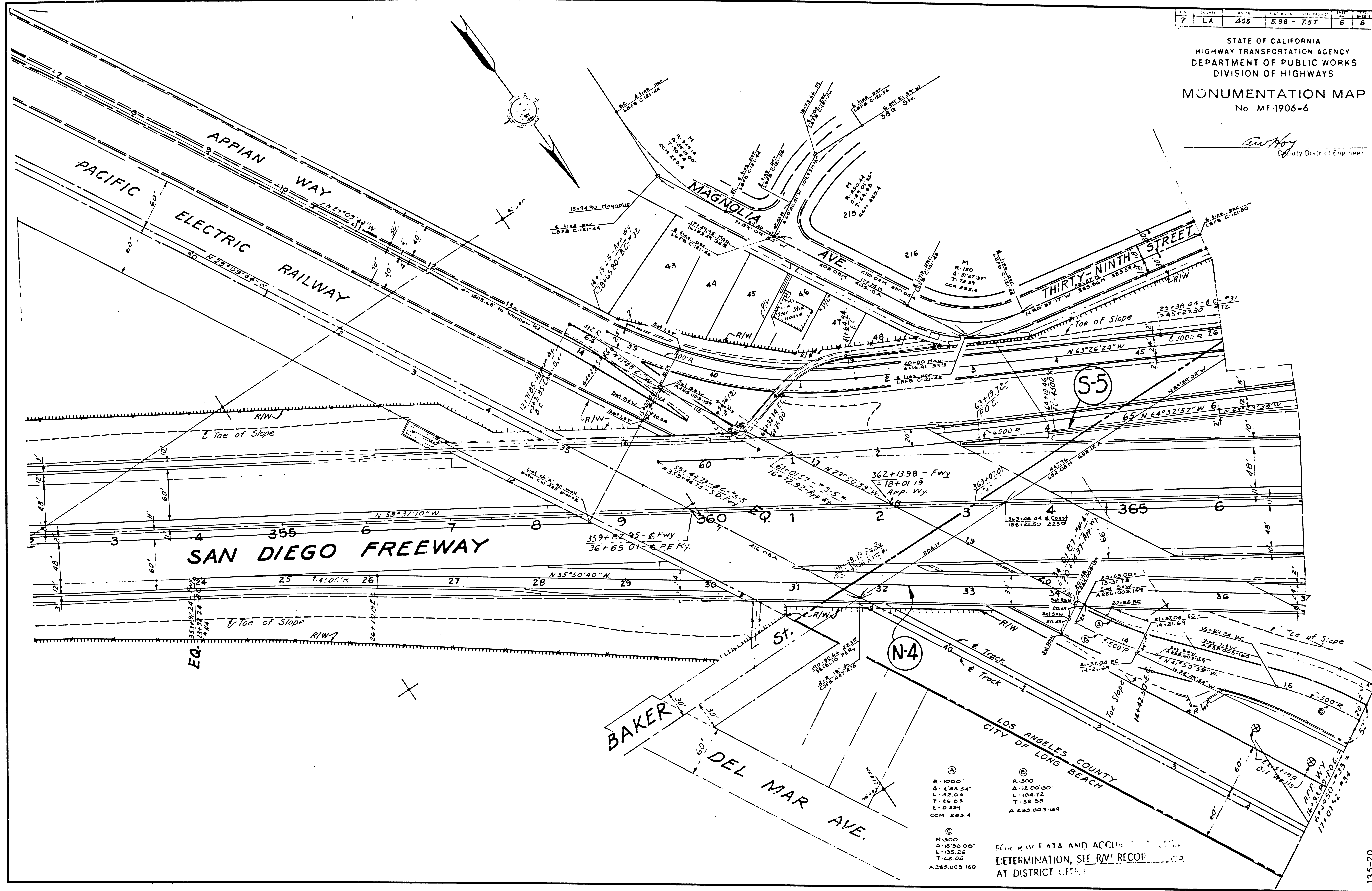
FOR R/W DATA AND ACCURATE ACCESS DETERMINATION, SEE R/W RECORD MAPS AT DISTRICT OFFICE.



7	LA	405	5.98 - 7.57	6	B
---	----	-----	-------------	---	---

STATE OF CALIFORNIA
HIGHWAY TRANSPORTATION AGENCY
DEPARTMENT OF PUBLIC WORKS
DIVISION OF HIGHWAYS
MONUMENTATION MAP
No. MF-1906-6

Carroll
Deputy District Engineer



(A) R-1000'
 Δ-2°28'34"
 L-52.04
 T-26.03
 E-0.934
 CCM 285.4

 (B) R-500'
 Δ-12°00'00"
 L-104.72
 T-52.55
 A 285.003-189

 (C) R-500'
 Δ-8°30'00"
 L-135.24
 T-68.05
 A 285.003-160

THE RAW DATA AND ACCURACY OF THIS DETERMINATION, SEE RECORD AT DISTRICT OFFICE

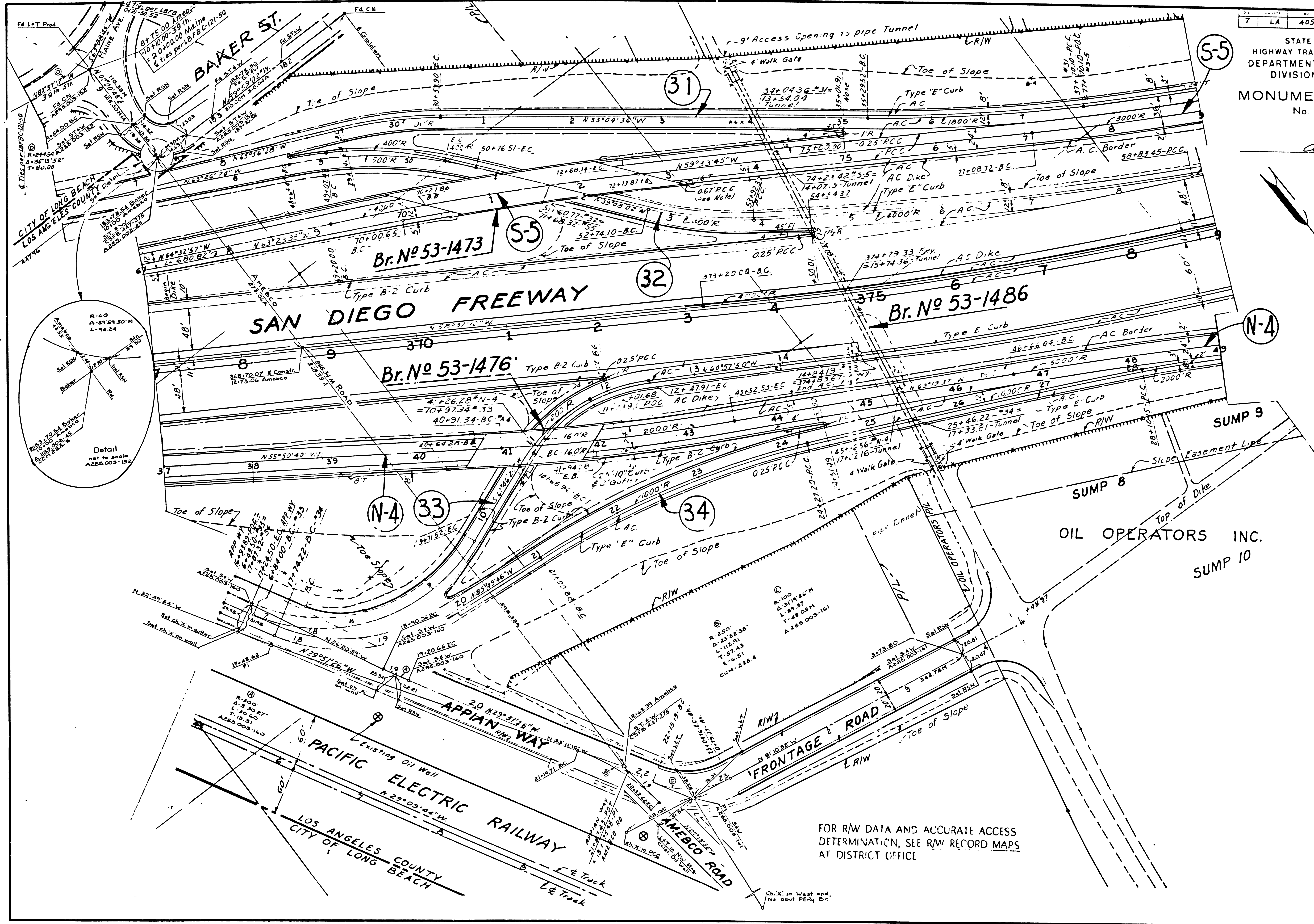
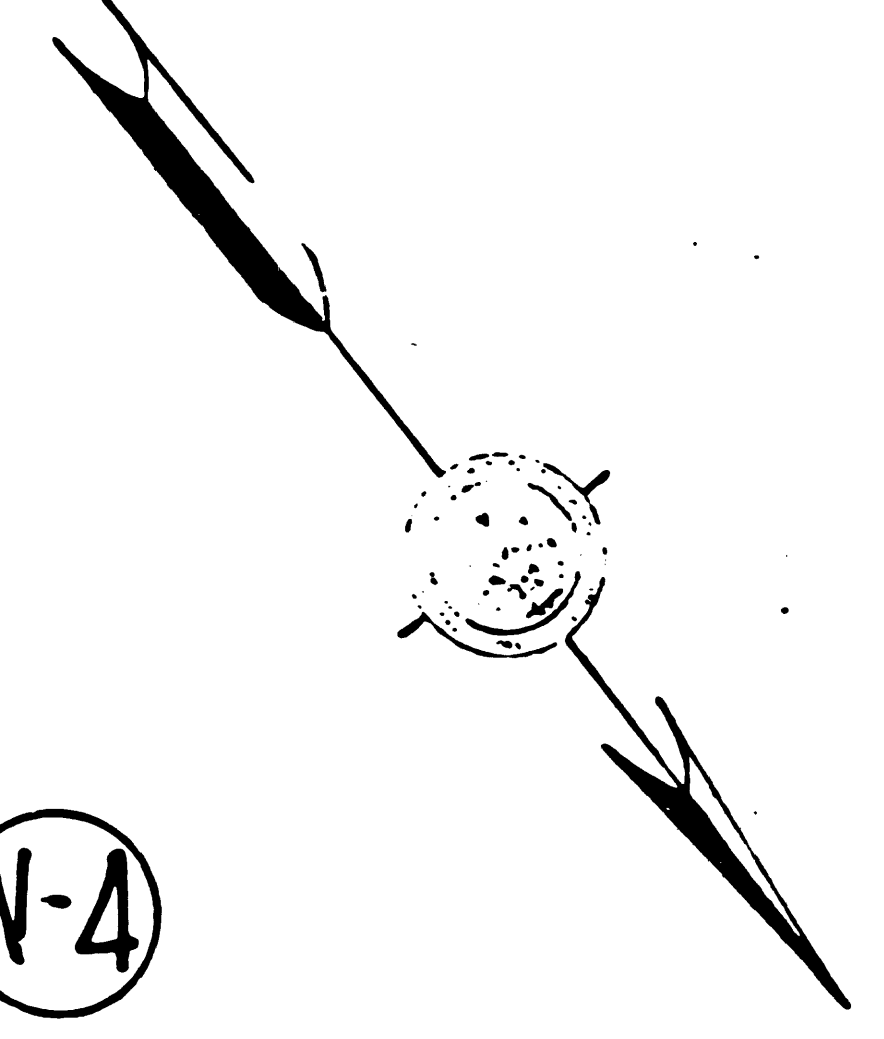
135-20

7	LA	405	598-757	7	8
---	----	-----	---------	---	---

STATE OF CALIFORNIA
HIGHWAY TRANSPORTATION AGENCY
DEPARTMENT OF PUBLIC WORKS
DIVISION OF HIGHWAYS

MONUMENTATION MAP
No. MF-1906-7

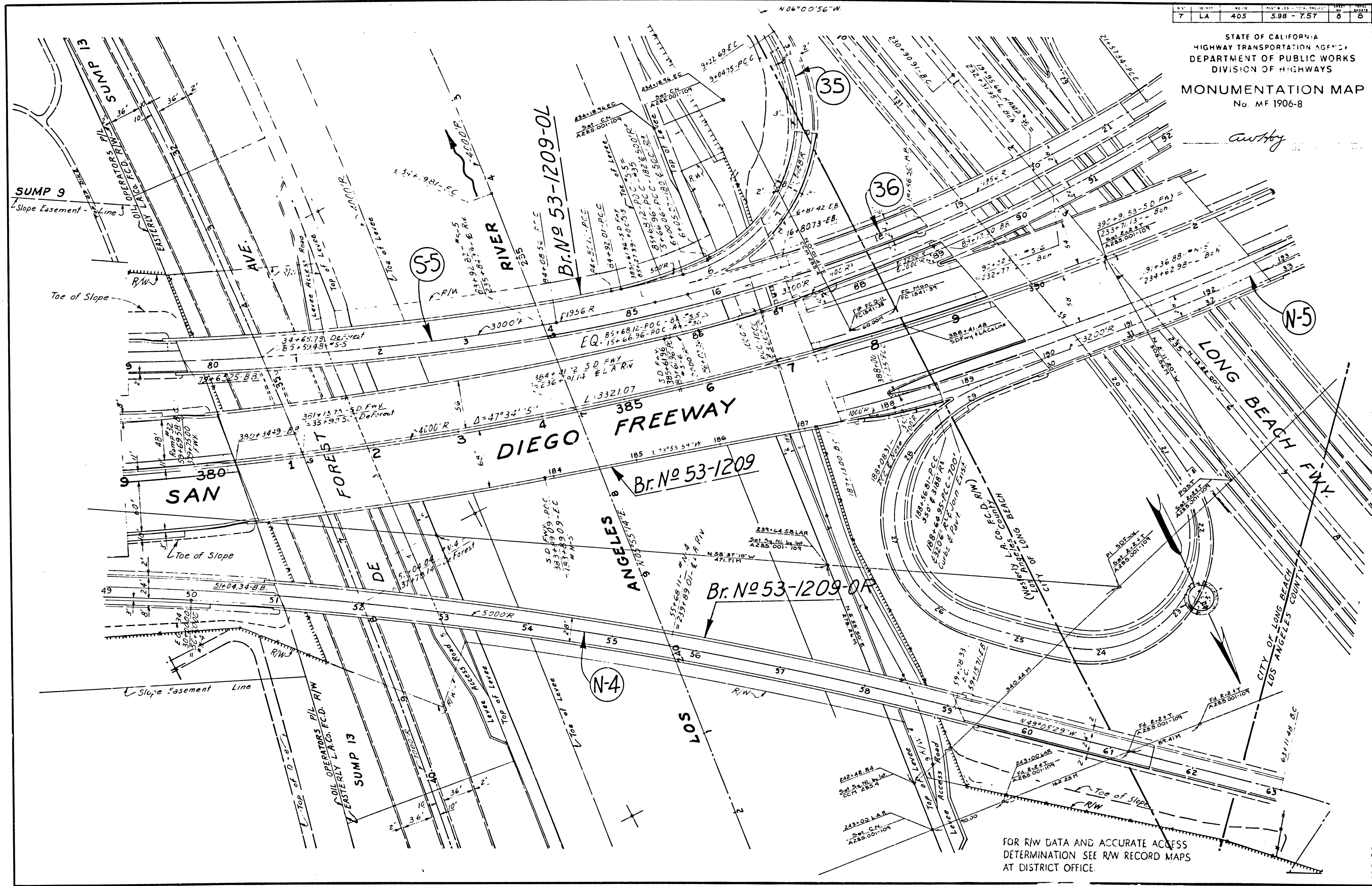
Cuthbert
District Engineer



FOR R/W DATA AND ACCURATE ACCESS
DETERMINATION, SEE R/W RECORD MAPS
AT DISTRICT OFFICE

7	LA	405	5.98 - 7.57	8	8
---	----	-----	-------------	---	---

STATE OF CALIFORNIA
HIGHWAY TRANSPORTATION AGENCY
DEPARTMENT OF PUBLIC WORKS
DIVISION OF HIGHWAYS
MONUMENTATION MAP
No. MF 1906-8



FOR R/W DATA AND ACCURATE ACCESS
DETERMINATION SEE R/W RECORD MAPS
AT DISTRICT OFFICE.

135-20

F.M. 20345-5