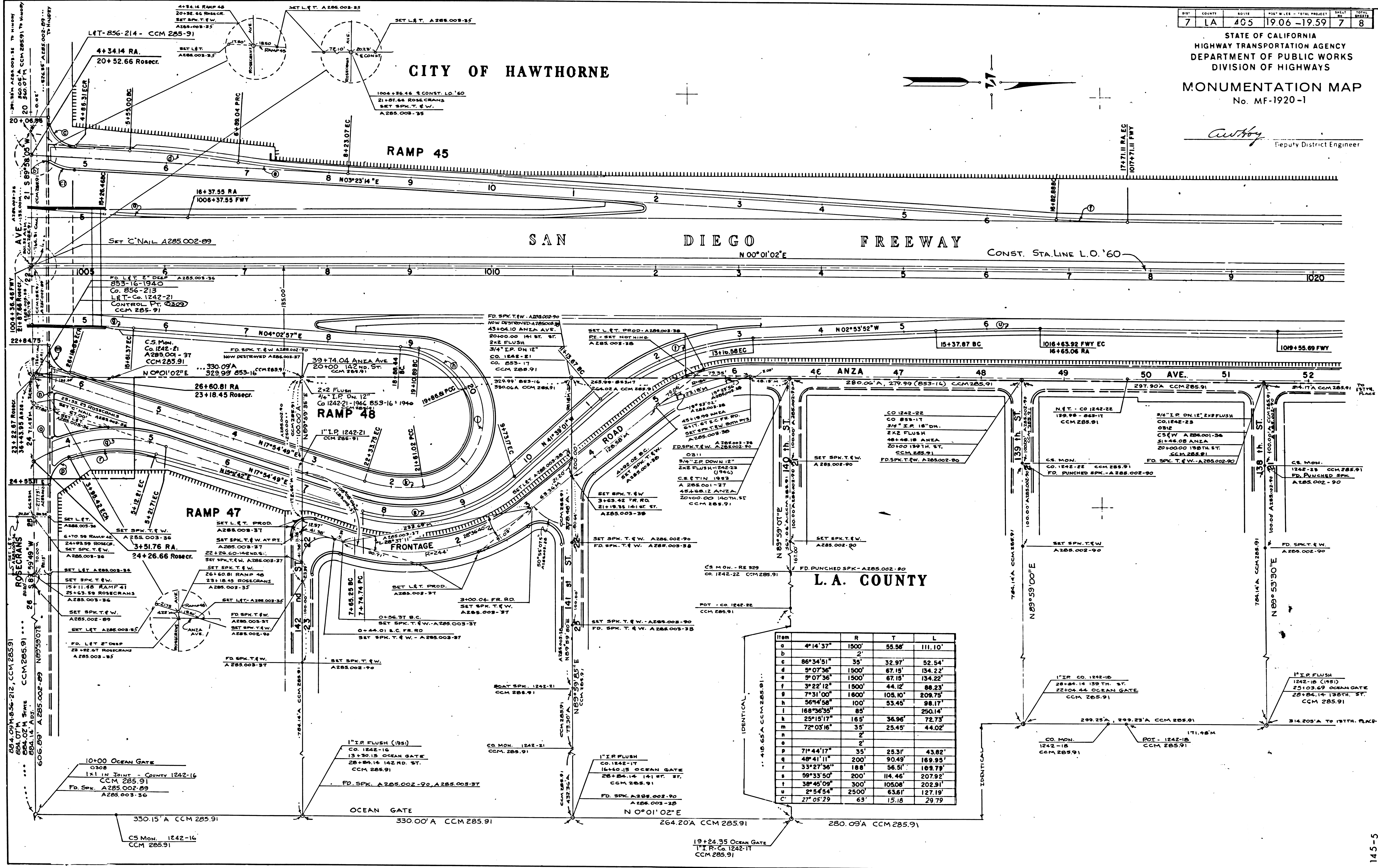


DIST.	COUNTY	ROUTE	POST MILES - TOTAL PROJECT	SHEET	TOTAL SHEETS
7	LA	405	19.06 - 19.59	7	8

STATE OF CALIFORNIA
HIGHWAY TRANSPORTATION AGENCY
DEPARTMENT OF PUBLIC WORKS
DIVISION OF HIGHWAYS
MONUMENTATION MAP
No. MF-1920-1

Cutler
Deputy District Engineer



Item	R	T	L	
a	4'14'37"	1500'	55.56'	111.10'
b		2'		
c	86°34'51"	35'	32.97'	52.54'
d	9°07'36"	1500'	67.15'	134.22'
e	9°07'36"	1500'	67.15'	134.22'
f	3°22'12"	1500'	44.12'	88.23'
g	7°31'00"	1800'	105.10'	209.75'
h	56°4'58"	100'	53.45'	98.17'
i	168°56'55"	85'		250.14'
j	25°15'17"	185'	36.96'	72.73'
k	72°03'16"	35'	25.45'	44.02'
l		2'		
m		2'		
n	71°44'17"	35'	25.31'	43.82'
o	49°41'11"	200'	90.49'	169.95'
p	33°27'36"	188'	56.51'	109.79'
q	59°33'50"	200'	114.46'	207.92'
r	38°45'09"	300'	105.08'	202.91'
s	2°54'54"	2500'	63.61'	127.19'
t	27°05'29"	65'	15.18'	29.79'

DIST.	COUNTY	SECTION	POST MILES - TOTAL PROJECT	SHEET NO.	TOTAL SHEETS
7	LA	405	19.06-19.59	8	8

STATE OF CALIFORNIA
HIGHWAY TRANSPORTATION AGENCY
DEPARTMENT OF PUBLIC WORKS
DIVISION OF HIGHWAYS

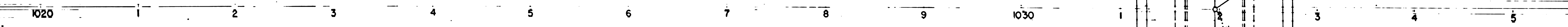
MONUMENTATION MAP
No. MF-1920-2

Autboy
Deputy District Engineer

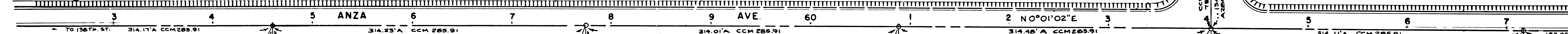
CITY OF HAWTHORNE

SAN DIEGO FREEWAY

N00°01'02"E

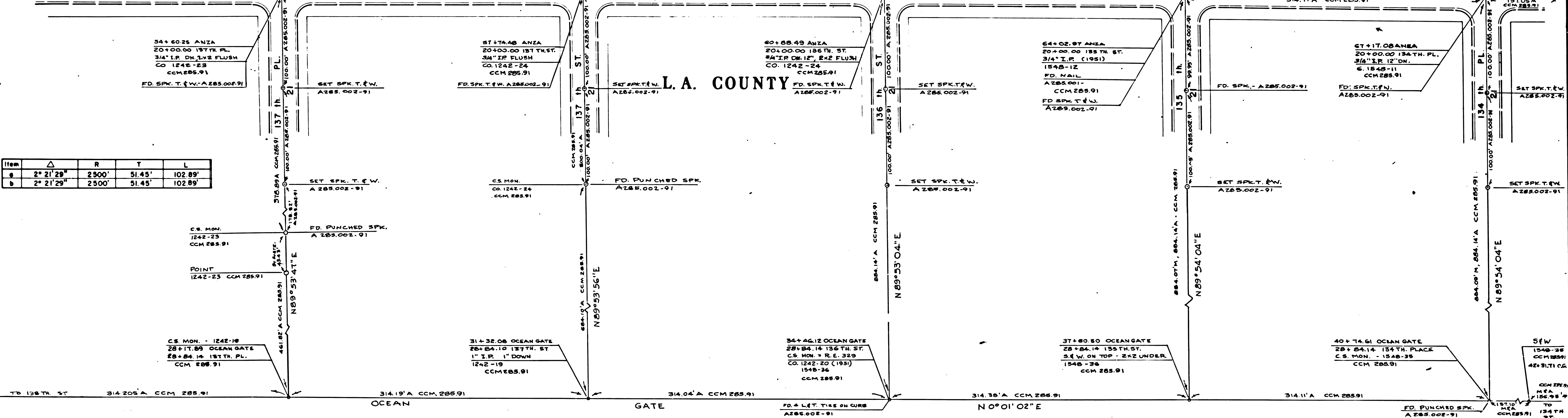


RAMP 47



Item	Δ	R	T	L
a	2° 21' 29"	2500'	51.45'	102.89'
b	2° 21' 29"	2500'	51.45'	102.89'

L.A. COUNTY



145-5