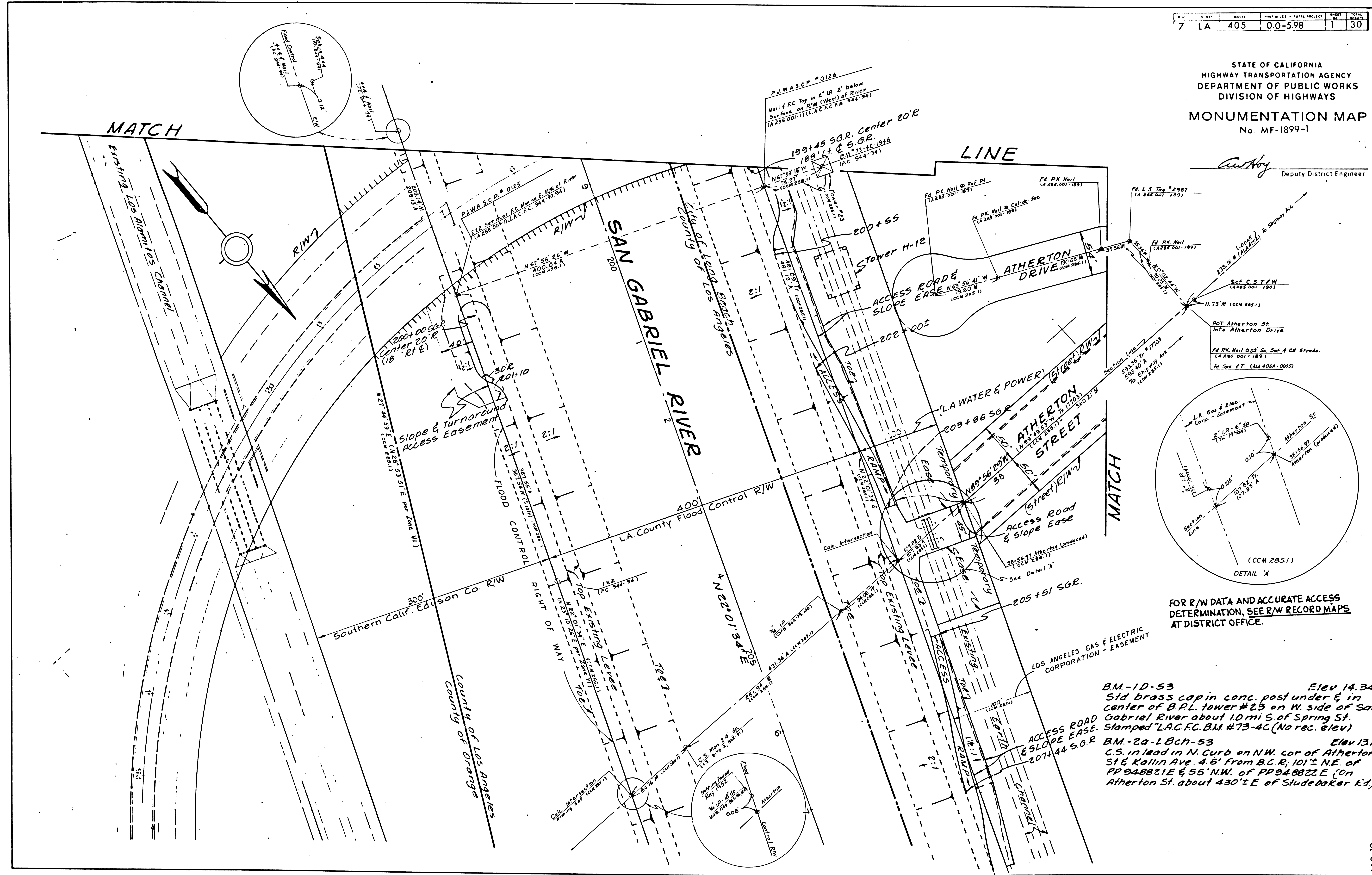


7	LA	405	0.0-598	1	30
---	----	-----	---------	---	----

STATE OF CALIFORNIA
HIGHWAY TRANSPORTATION AGENCY
DEPARTMENT OF PUBLIC WORKS
DIVISION OF HIGHWAYS
MONUMENTATION MAP
No. MF-1899-1

C. Aubrey
Deputy District Engineer



FOR R/W DATA AND ACCURATE ACCESS DETERMINATION, SEE R/W RECORD MAPS AT DISTRICT OFFICE.

BM-10-53 Elev 14.34
Std brass cap in conc. post under & in center of B.P.L. tower #23 on W. side of San Gabriel River about 10 mi S of Spring St. Stamped "L.A.C.F.C. B.M. #73-4C (No rec. elev.)"

BM-29-LBch-53 Elev 13.10
C.S. in lead in N. Curb on N.W. cor of Atherton St & Kallin Ave. 4.5' from B.C.R.; 101' N.E. of PP948821E & 55' N.W. of PP948822E (On Atherton St. about 430' E of Sludger Rd.)

BM-1D-53 Elev 1434
 Sid. brass cap in conc post under E in center of B.P.L. tower #23 on W side of San Gabriel River about 1.0 mi S. of Spring St. Stamped L.A.C.F.C. B.M. #73-AC (No rec. elev.)

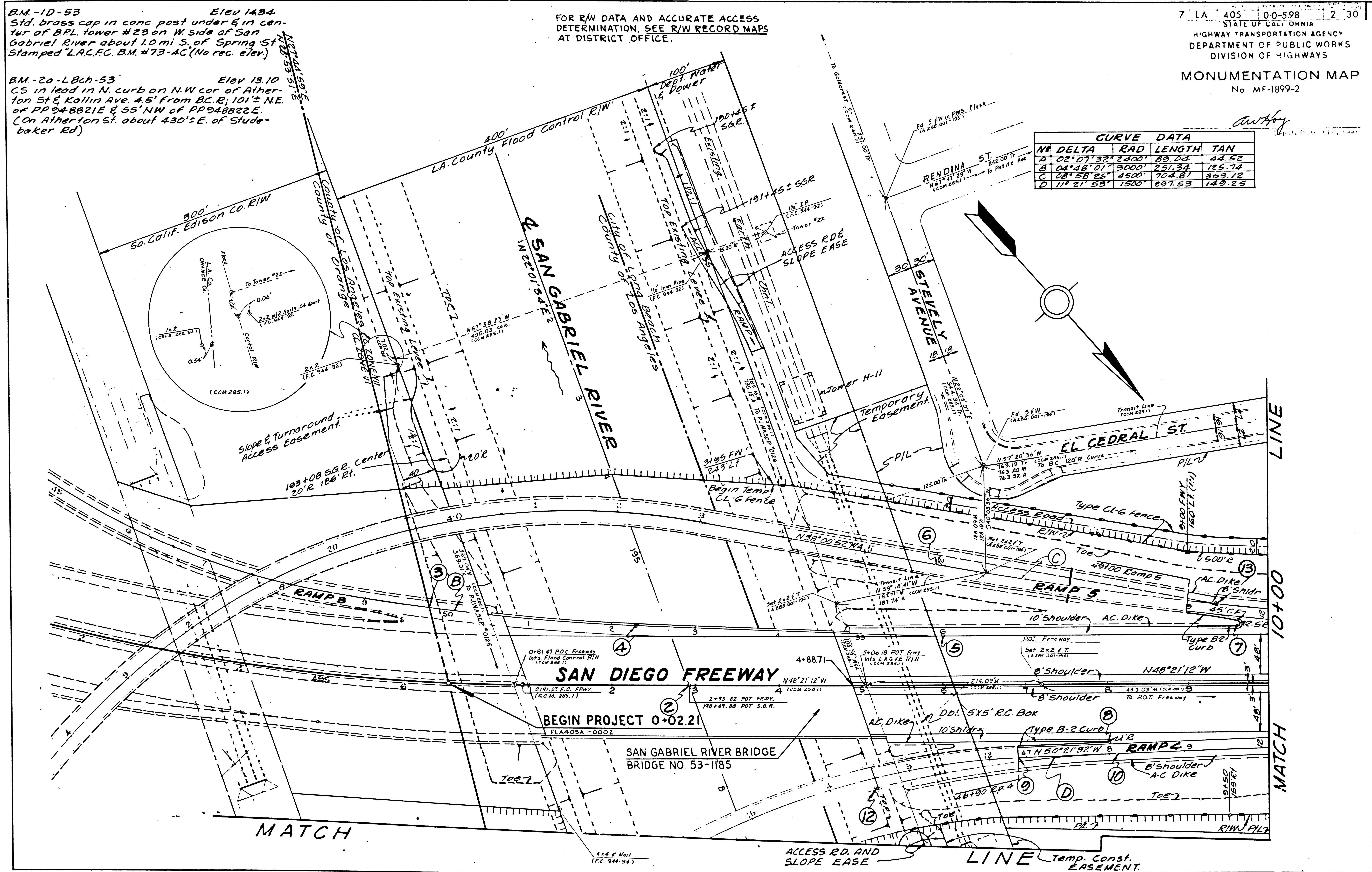
BM-2a-LBch-53 Elev 13.10
 CS in lead in N. curb on N.W. cor of Atherton St & Kallin Ave. 4.5' from B.C.R.; 101'± N.E. of PP048821E & 55'± N.W. of PP048822E. (On Atherton St. about 430'± E. of Studenbaker Rd)

FOR R/W DATA AND ACCURATE DETERMINATION, SEE R/W RECORD MAPS AT DISTRICT OFFICE.

7 LA 405 00-598 2 30
 STATE OF CALIFORNIA
 HIGHWAY TRANSPORTATION AGENCY
 DEPARTMENT OF PUBLIC WORKS
 DIVISION OF HIGHWAYS
 MONUMENTATION MAP
 No MF-1899-2

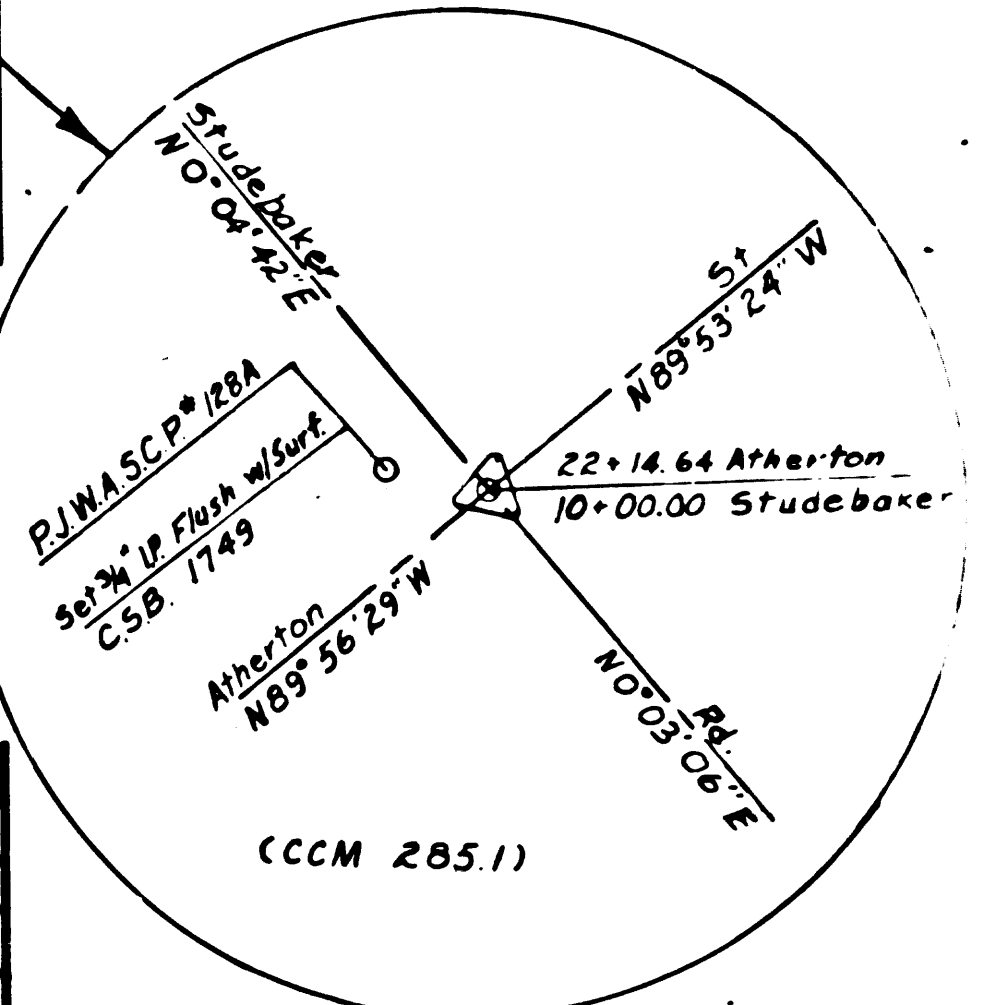
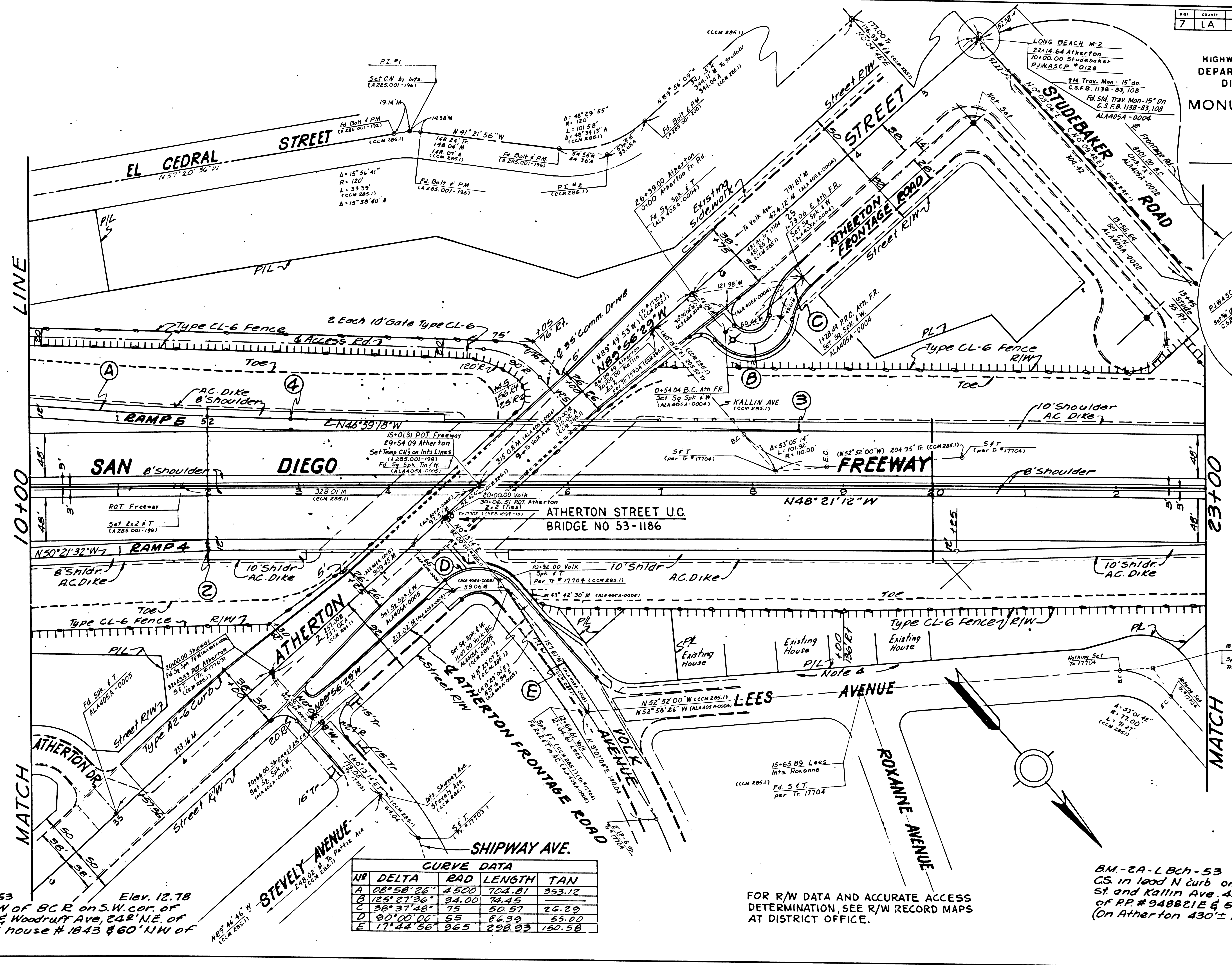
antboy

CURVE DATA				
NA	DELTA	RAD	LENGTH	TAN
A	02° 07' 32"	2400'	89.04	44.52
B	04° 48' 01"	3000'	251.34	125.74
C	08° 58' 22"	4500'	704.81	353.12
D	17° 21' 53"	1500'	297.53	148.25



STATE OF CALIFORNIA
HIGHWAY TRANSPORTATION AGENCY
DEPARTMENT OF PUBLIC WORKS
DIVISION OF HIGHWAYS
MONUMENTATION MAP
No. MF-1899-3

Authy
Deputy District Engineer



- Type 'A' Monuments
- Type 'B' Monuments

CURVE DATA

NR	DELTA	RAD	LENGTH	TAN
A	08°58'26"	4500	702.81	353.12
B	125°27'36"	34.00	73.45	
C	38°37'48"	75	50.57	26.29
D	90°00'00"	55	66.39	55.00
E	17°42'66"	265	228.23	150.58

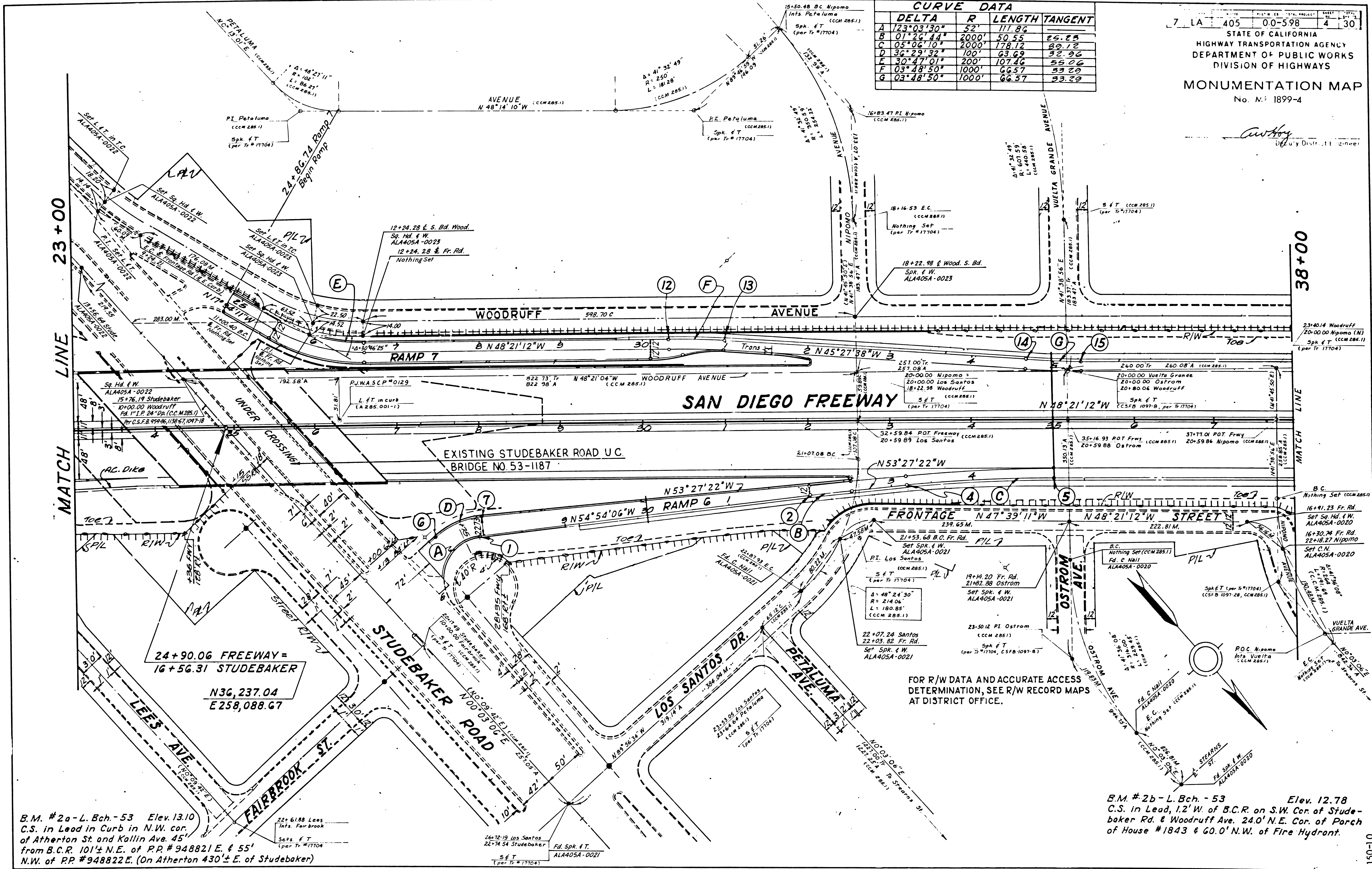
BM-2b-LBch-53
Elev. 12.78
CS. in lead, 13' W of B.C.R. on S.W. cor. of
Studebaker Ed. & Woodruff Ave, 248' N.E. of
cor of porch of house # 1843 & 60' N.W. of
fire hydrant.

FOR R/W DATA AND ACCURATE ACCESS
DETERMINATION, SEE R/W RECORD MAPS
AT DISTRICT OFFICE.

BM-2A-LBch-53
Elev 13.10
CS in lead N curb on NW cor. of Atherton
St. and Kallin Ave. 45' from B.C.R. 101' NE
of PP # 948821E & 55' N.W. of PP # 948822E.
(On Atherton 430'± E of Studebaker.)

CURVE DATA			
DELTA	R	LENGTH	TANGENT
A 123°03'30"	52'	171.86	
B 01°26'44"	2000'	50.55	25.25
C 05°06'10"	2000'	178.12	89.12
D 36°29'32"	100'	63.69	32.96
E 30°47'01"	200'	107.46	53.73
F 03°48'50"	1000'	66.37	33.29
G 03°48'50"	1000'	66.37	33.29

Curby
 Deputy District Engineer



MATCH LINE 23+00

MATCH LINE 38+00

B.M. #2a-L. Bch. - 53 Elev. 13.10
 C.S. in Lead in Curb in N.W. cor.
 of Atherton St. and Kallin Ave. 45'
 from B.C.R. 101± N.E. of P.P. #948821 E. 55'
 N.W. of P.P. #948822 E. (On Atherton 430± E. of Studebaker)

B.M. #2b-L. Bch. - 53 Elev. 12.78
 C.S. in Lead, 1.2' W. of B.C.R. on S.W. Cor. of Stude-
 baker Rd. & Woodruff Ave. 240' N.E. Cor. of Porch
 of House #1843 & 60.0' N.W. of Fire Hydrant.

FOR R/W DATA AND ACCURATE ACCESS
 DETERMINATION, SEE R/W RECORD MAPS
 AT DISTRICT OFFICE.

17