

**CURVE DATA**

NO	DELTA	RAD.	LENGTH	TAN.
A	63° 59' 40"	200'	223.38	124.96
B	01° 00' 28"	1000'	17.59	8.79
C	90° 28' 57"	188'	296.89	
D	87° 37' 33"	260'	382.34	239.84
E	19° 56' 55"	100'	34.82	17.59
F	19° 56' 55"	100'	34.82	17.59
G	19° 56' 55"	100'	34.82	17.59
H	19° 56' 55"	100'	34.82	17.59
I	26° 50' 07"	260'	121.77	62.03
J	26° 50' 07"	260'	121.77	62.03
K	06° 13' 03"	1615'	175.25	87.71
L	06° 13' 03"	1615'	175.25	87.71
M	16° 12' 50"	440'	124.51	62.68
N	16° 12' 50"	440'	124.51	62.68

BM-13-L&H  
CS in curb; N.W. cor Willow St & Stanbridge Ave; 5° N B.C.R.; 30° S.E. of cor House.  
Elev 17.90

FOR RW DATA AND ACCURATE ACCESS DETERMINATION, SEE RW RECORD MAPS AT DISTRICT OFFICE.

• Type "B" Monuments  
BM-12-LBch-53 Elev. 19.45  
CS in lead in curb at N.W. cor of Willow St & Bellflower Blvd; 4° N of B.C.R.; 45° S.E. of PP# 946764E & 36° SW of PP# 607671E

B.M.-13-L Bch Elev. 17.90  
 C.S. in curb; N.W. cor Willow St & Stanbridge  
 Ave.; 5° W. B.C.R.; 30° S.E. of cor. House.

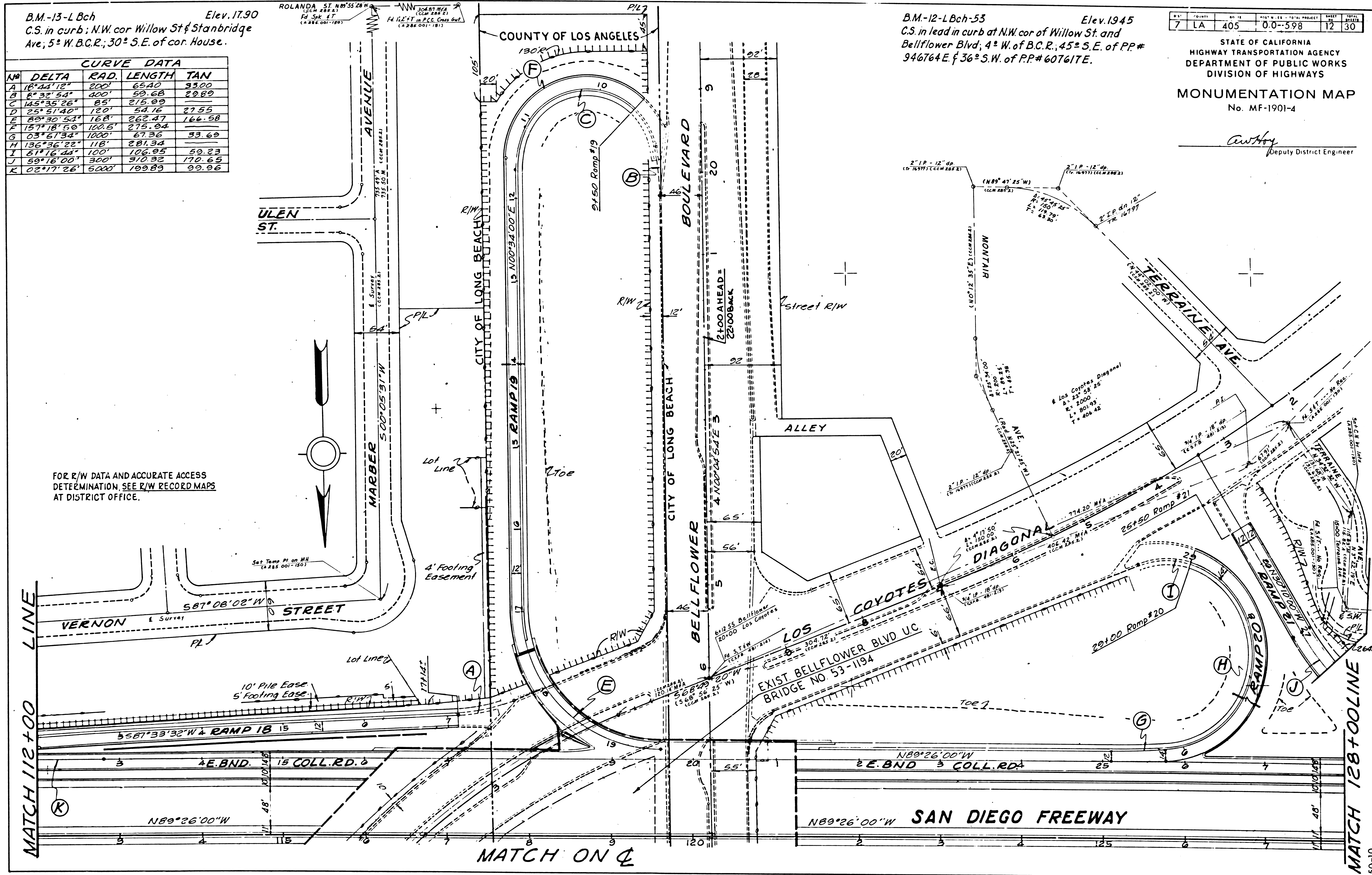
CURVE DATA			
NO	DELTA	RAD.	TAN
A	18° 44' 12"	200'	65.40
B	8° 32' 54"	400'	59.68
C	145° 35' 26"	85'	215.09
D	25° 51' 40"	120'	54.16
E	80° 30' 51"	168'	262.47
F	157° 18' 50"	100.5'	275.04
G	03° 51' 34"	1000'	67.36
H	136° 36' 22"	118'	281.34
I	51° 16' 44"	100'	106.95
J	59° 16' 00"	300'	310.32
K	02° 17' 26"	5000'	109.89

B.M.-12-L Bch-53 Elev. 19.45  
 C.S. in lead in curb at N.W. cor of Willow St and  
 Bellflower Blvd; 4° W. of B.C.R.; 45° S.E. of PP#  
 94764 E. of 36° S.W. of P.P.# 60761 E.

SHEET NO.	TOTAL SHEETS	DATE	PROJECT
7	12	1945	0.0-598

STATE OF CALIFORNIA  
 HIGHWAY TRANSPORTATION AGENCY  
 DEPARTMENT OF PUBLIC WORKS  
 DIVISION OF HIGHWAYS  
**MONUMENTATION MAP**  
 No. MF-1901-4

*C. W. H. H.*  
 Deputy District Engineer

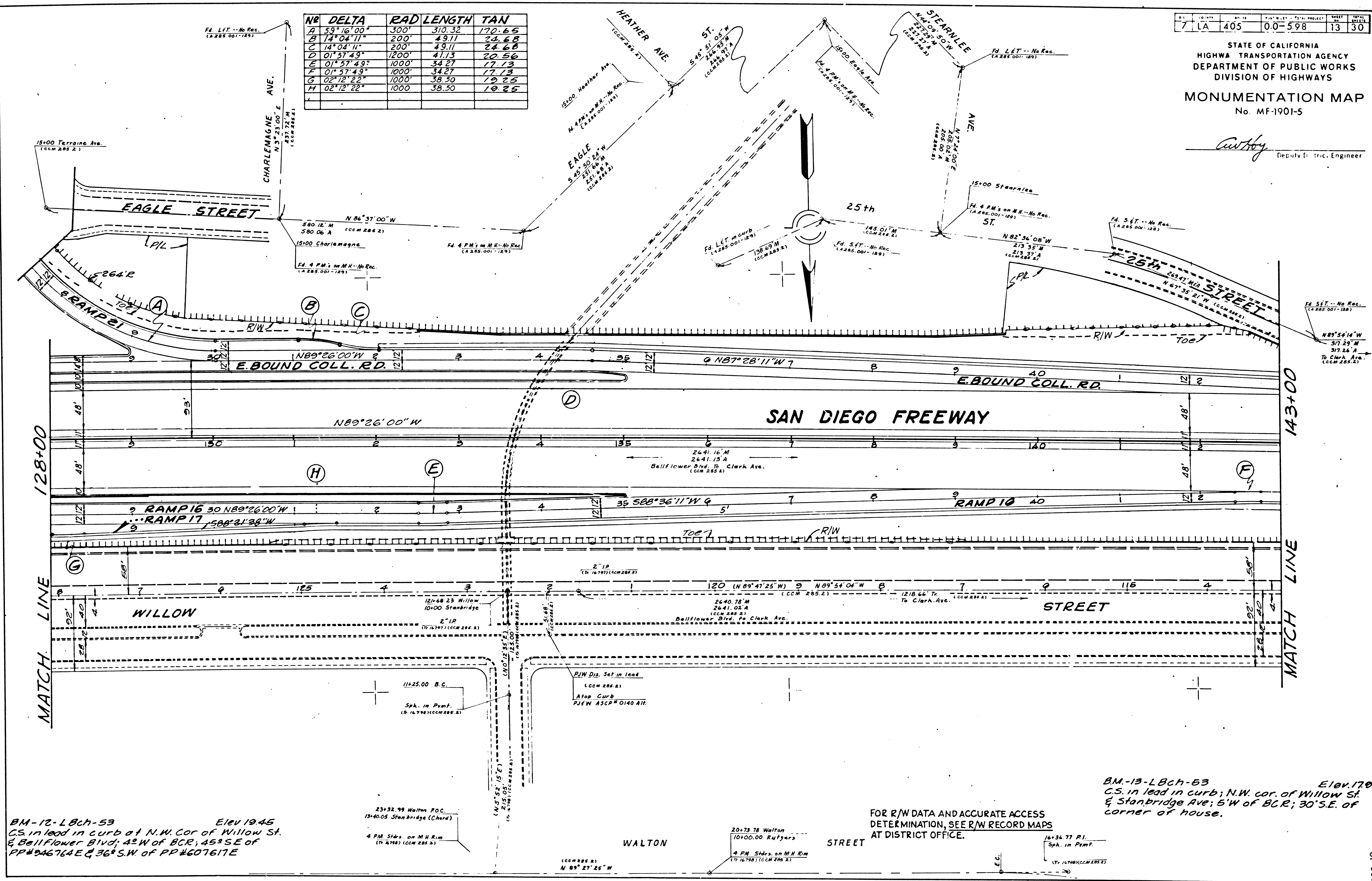


7	LA	405	0.0-5.98	13	30
---	----	-----	----------	----	----

STATE OF CALIFORNIA  
HIGHWAY TRANSPORTATION AGENCY  
DEPARTMENT OF PUBLIC WORKS  
DIVISION OF HIGHWAYS  
**MONUMENTATION MAP**  
No. MF-1901-5

*C. H. H. H.*  
Deputy District Engineer

NO	DELTA	RAD	LENGTH	TAN
A	59° 16' 00"	300'	310.32	170.65
B	14° 04' 11"	200'	49.11	24.68
C	14° 04' 11"	200'	49.11	24.68
D	01° 57' 49"	1200'	41.13	20.56
E	01° 57' 49"	1000'	34.27	17.13
F	01° 57' 49"	1000'	34.27	17.13
G	02° 12' 22"	1000'	38.50	19.25
H	02° 12' 22"	1000'	38.50	19.25



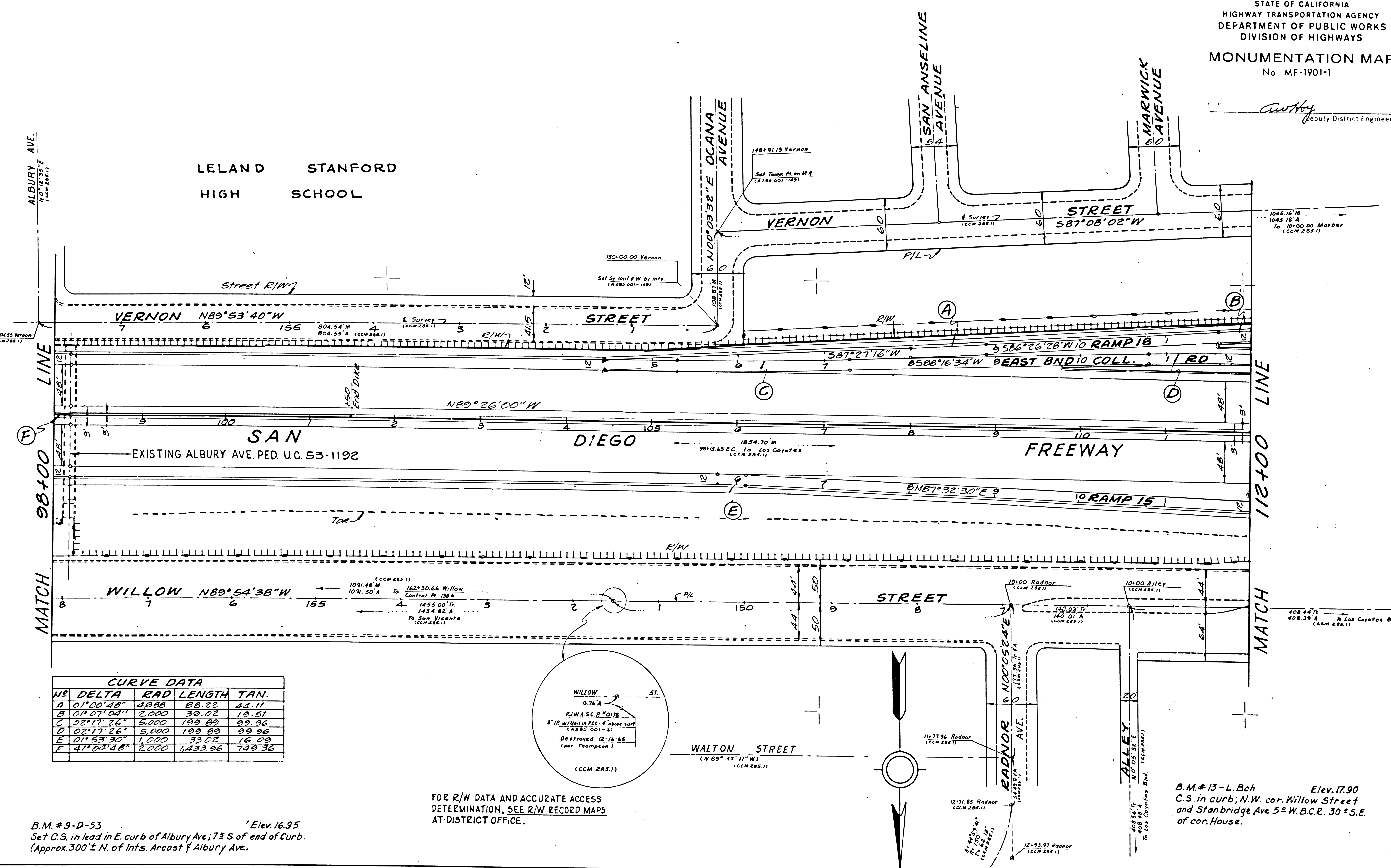
BM-12-LBch-53 Elev 19.45  
CS in lead in curb at N.W. Cor of Willow St.  
& Bellflower Blvd; 42' W of BCR; 45° S E of  
PP#046764 E & 36° S.W. of PP#607617 E

BM-13-LBch-53 Elev 17.00  
CS in lead in curb; N.W. cor. of Willow St.  
& Stanbridge Ave; 5' W of BCR; 30° S.E. of  
corner of house.

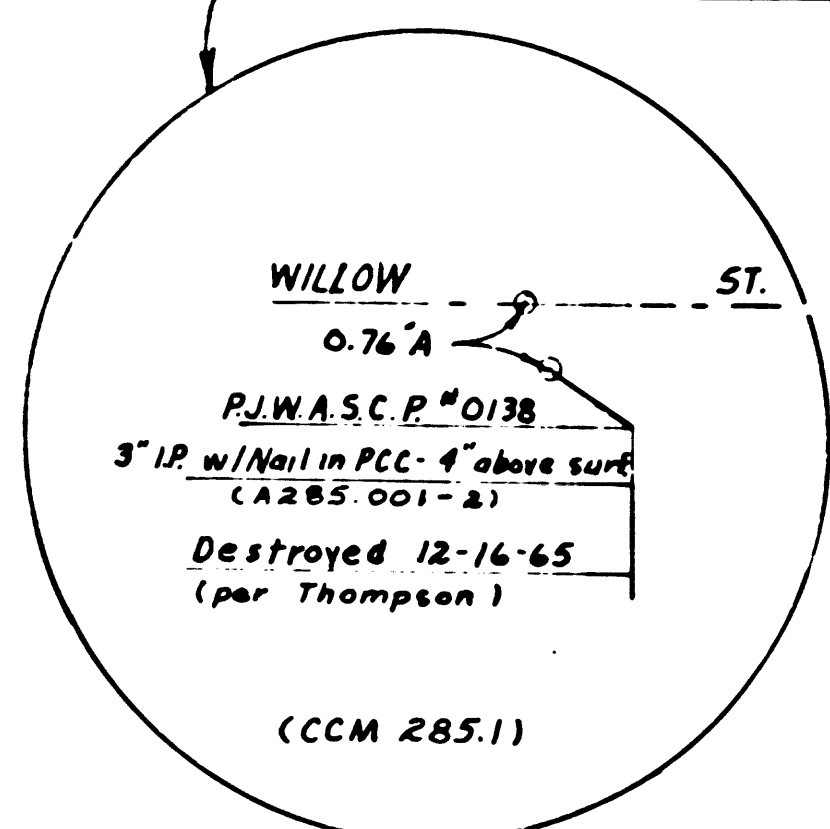
FOR R/W DATA AND ACCURATE ACCESS  
DETERMINATION, SEE R/W RECORD MAPS  
AT DISTRICT OFFICE.

STATE OF CALIFORNIA  
HIGHWAY TRANSPORTATION AGENCY  
DEPARTMENT OF PUBLIC WORKS  
DIVISION OF HIGHWAYS  
MONUMENTATION MAP  
No. MF-1901-1

*Anthony*  
Deputy District Engineer



CURVE DATA				
NO	DELTA	RAD	LENGTH	TAN.
A	01°00'48"	4988	88.22	11.11
B	01°07'04"	2,000	39.02	10.51
C	02°17'26"	5,000	199.89	99.96
D	02°17'26"	5,000	199.89	99.96
E	01°53'30"	1,000	33.02	16.09
F	41°02'48"	2,000	1,433.96	749.36



B.M. #9-D-53 Elev. 16.95  
Set C.S. in lead in E. curb of Albury Ave; 7± S. of end of Curb.  
(Approx. 300± N. of Ints. Arcost & Albury Ave.)

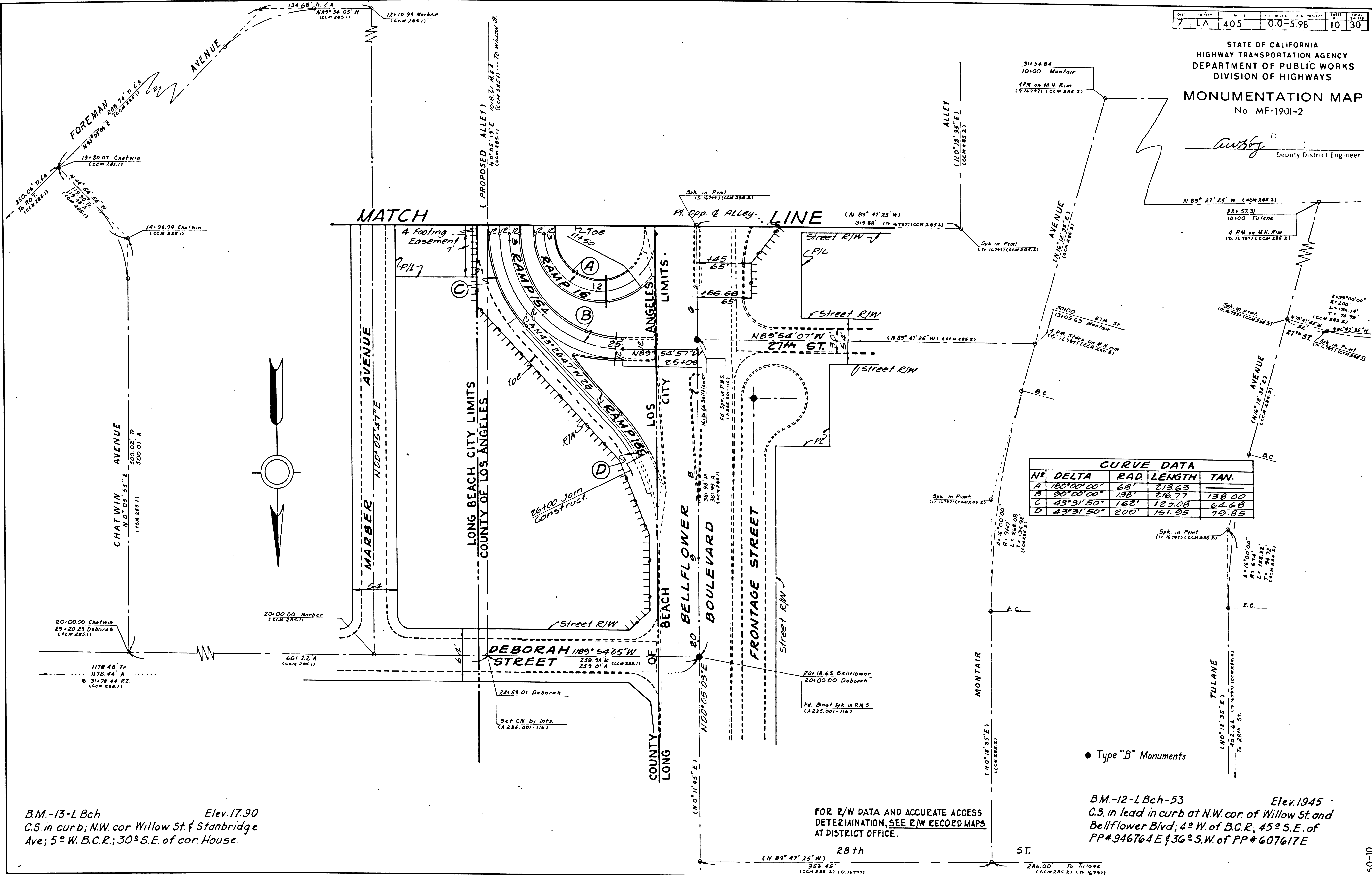
FOR R/W DATA AND ACCURATE ACCESS  
DETERMINATION, SEE R/W RECORD MAPS  
AT DISTRICT OFFICE.

B.M. #13-L Bch Elev. 17.90  
C.S. in curb; N.W. cor. Willow Street  
and Stanbridge Ave 5± W.B.C.R. 30± S.E.  
of cor. House.

DATE	BY	PROJECT	SHEET	TOTAL
7/14/97	LA 405	0.0-5.98	10	30

STATE OF CALIFORNIA  
HIGHWAY TRANSPORTATION AGENCY  
DEPARTMENT OF PUBLIC WORKS  
DIVISION OF HIGHWAYS  
**MONUMENTATION MAP**  
No MF-1901-2

*Autby*  
Deputy District Engineer



**CURVE DATA**

NO	DELTA	RAD	LENGTH	TAN.
A	180°00'00"	62'	213.63	
B	20°00'00"	138'	216.77	138.00
C	43°31'50"	162'	125.08	64.68
D	43°31'50"	200'	151.05	72.85

B.M.-13-L Bch Elev. 17.90  
C.S. in curb; N.W. cor Willow St. & Stanbridge Ave; 5° W. B.C.R.; 30° S.E. of cor. House.

FOR R/W DATA AND ACCURATE ACCESS DETERMINATION, SEE R/W RECORD MAPS AT DISTRICT OFFICE.

● Type "B" Monuments  
B.M.-12-L Bch-53 Elev. 1945  
C.S. in lead in curb at N.W. cor of Willow St. and Bellflower Blvd; 4° W. of B.C.R.; 45° S.E. of PP# 946764 E & 36° S.W. of PP# 607617 E