

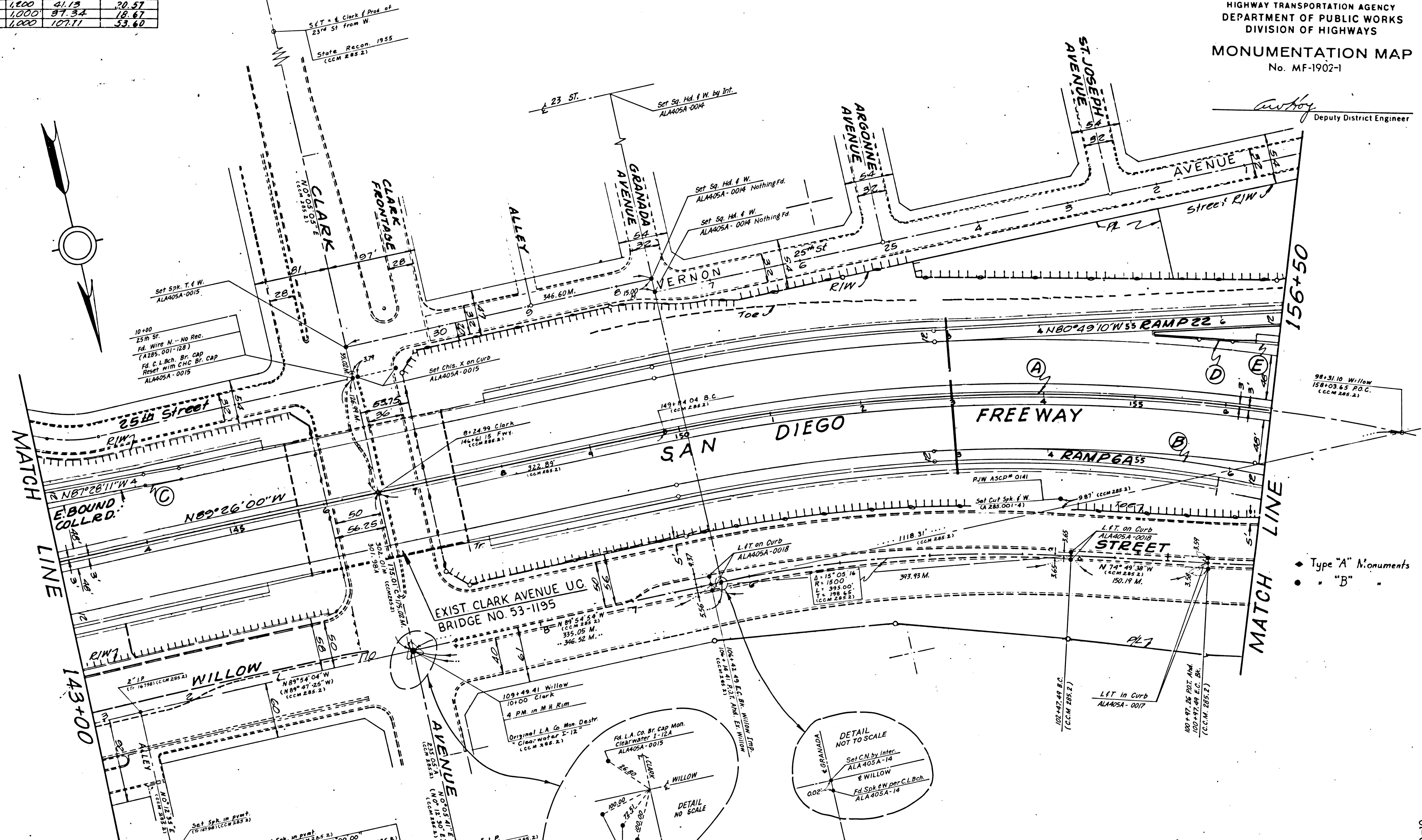
CURVE DATA			
Nº	DELTA	RAD LENGTH	TAN
A	36°06'00"	2,000	1,260.14
B	28°41'55"	1,412	707.25
C	01°57'40"	1,000	41.15
D	02°08'22"	1,000	97.34
E	06°08'13"	1,000	107.71

L = 1260.13' Per CCM 285.2

NO.	COUNTY	ROUTE	POST MILES - TOTAL PROJECT	SHEET NO.	TOTAL SHEETS
7	LA	405	0.0-5.98	14	30

STATE OF CALIFORNIA
HIGHWAY TRANSPORTATION AGENCY
DEPARTMENT OF PUBLIC WORKS
DIVISION OF HIGHWAYS
MONUMENTATION MAP
No. MF-1902-1

Curby
Deputy District Engineer



B.M.-13-L Bch-53
Elev. 17.90
C.S. in Lead in Curb; NW Cor. of Willow St. and Standbridge Ave; 5' W of B.C.R.; 30' SE of Corner of House

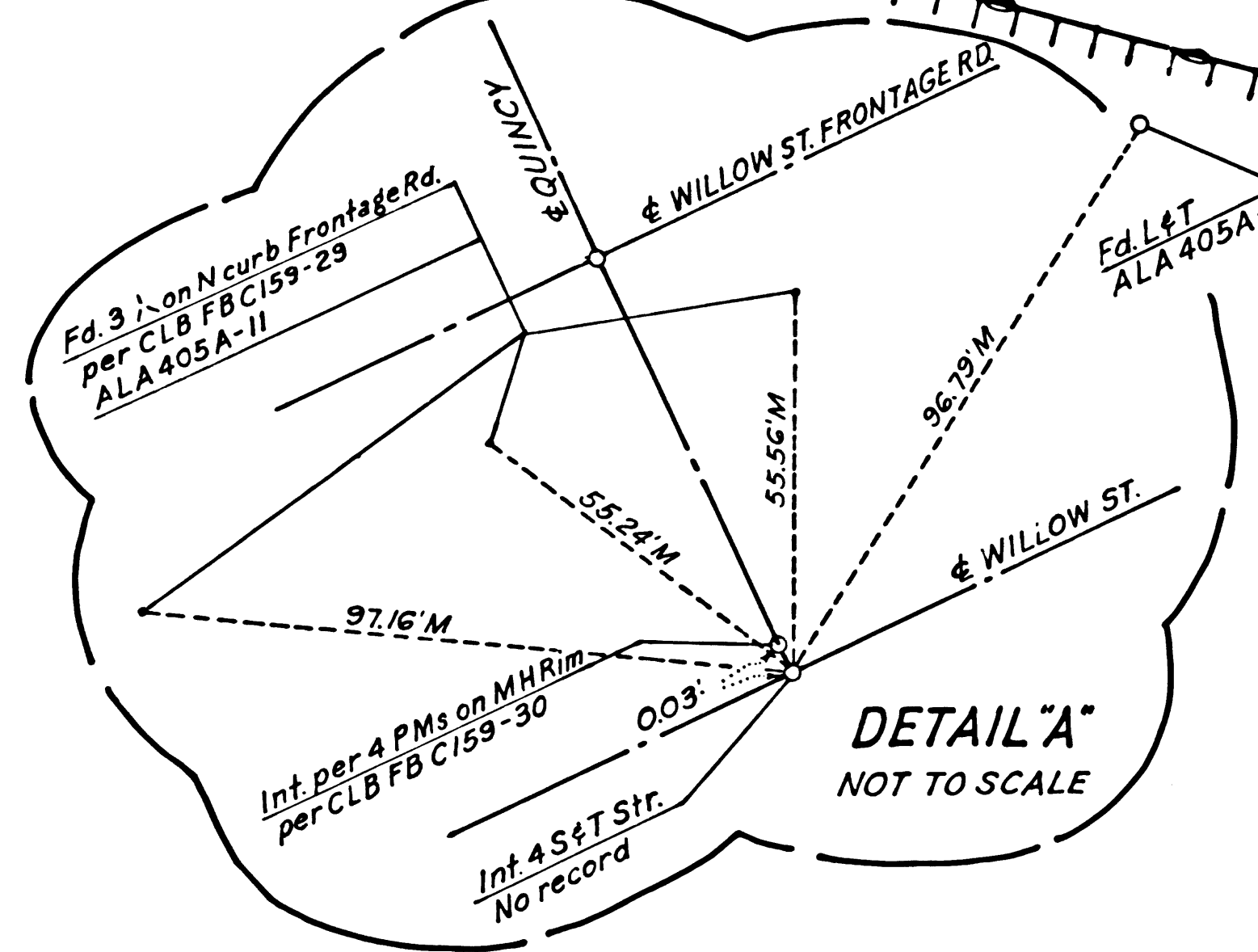
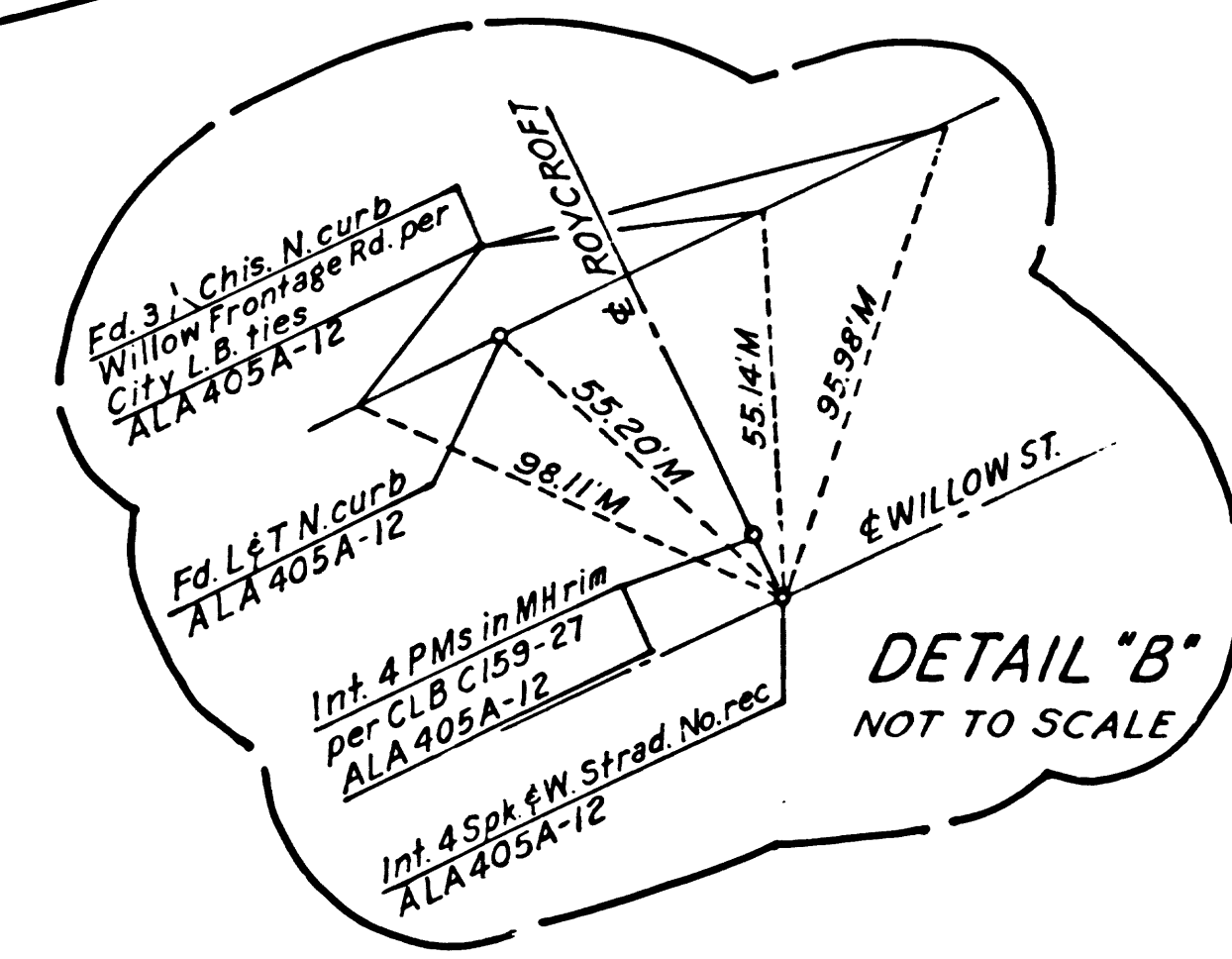
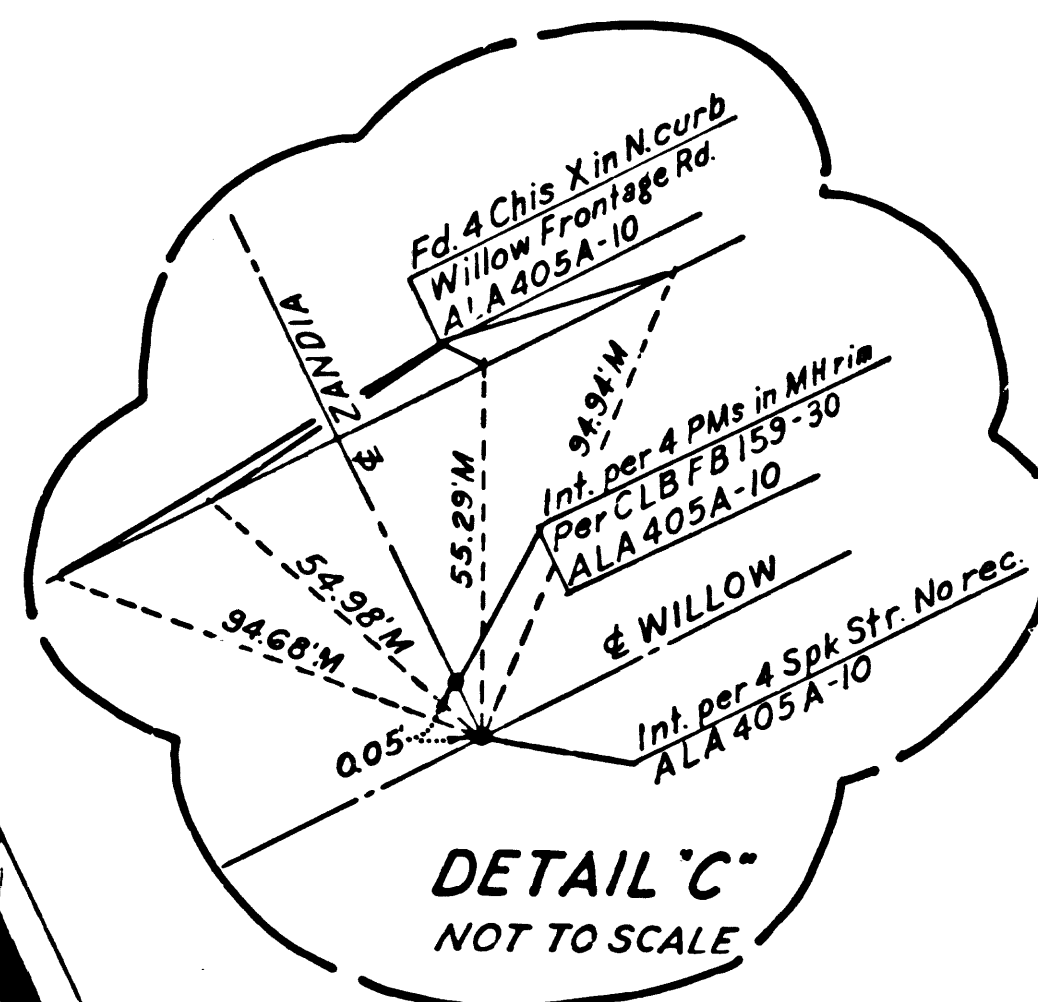
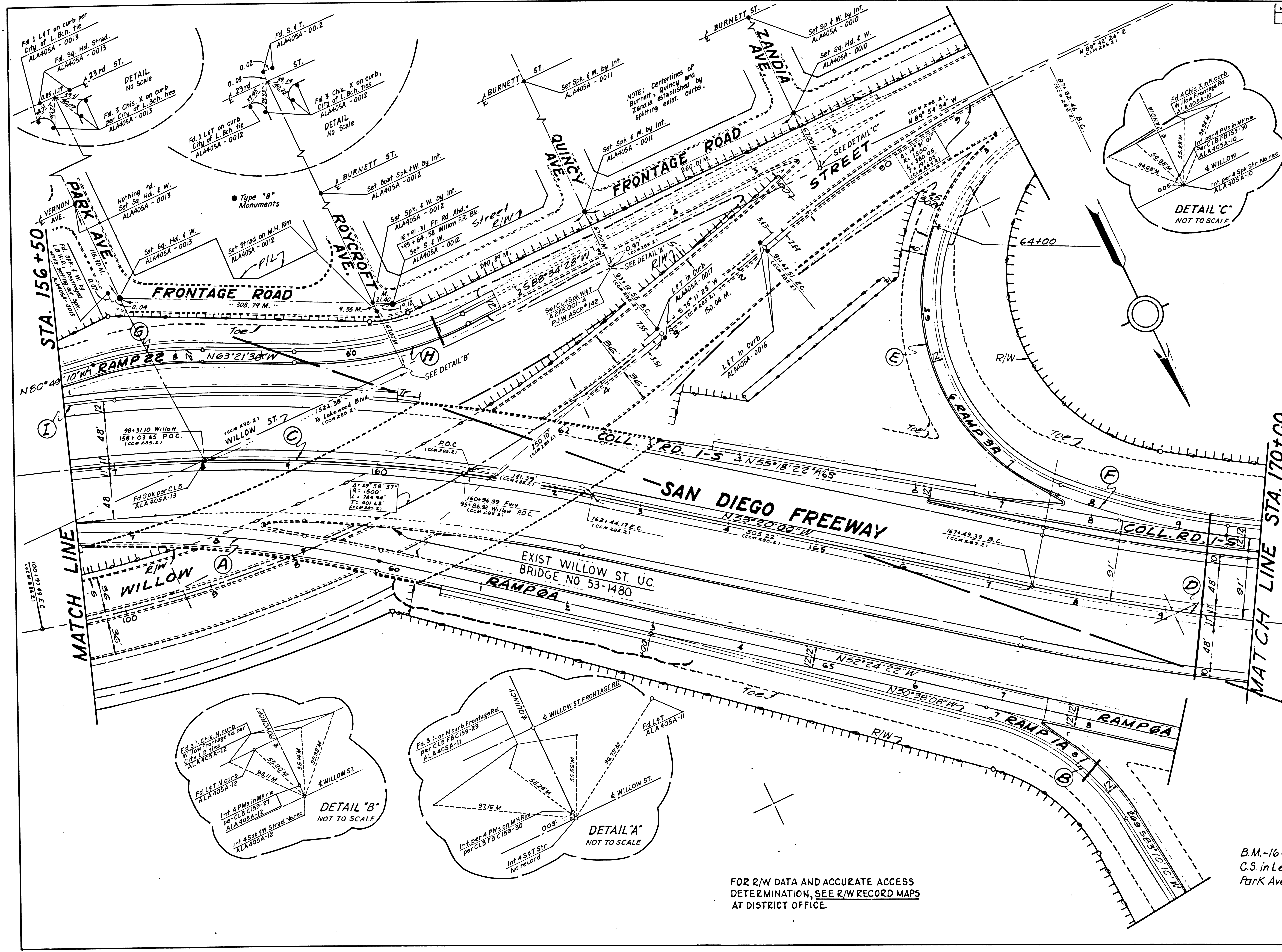
B.M.-14-L Bch-53
Elev. 20.48
C.S. in Lead in Curb @ NE Corner of Willow Street and Clark Ave. 3' E. of B.C.R. and 4' S.W. of Fire Hydrant.

FOR R/W DATA AND ACCURATE ACCESS DETERMINATION, SEE R/W RECORD MAPS AT DISTRICT OFFICE.

SHEET	7	COUNTY	LA	PROJECT	405	DATE	0-5-98	TOTAL SHEETS	15	DATE	30
-------	---	--------	----	---------	-----	------	--------	--------------	----	------	----

STATE OF CALIFORNIA
HIGHWAY TRANSPORTATION AGENCY
DEPARTMENT OF PUBLIC WORKS
DIVISION OF HIGHWAYS
MONUMENTATION MAP
No. MF-1902-2

Anthony
Deputy District Engineer



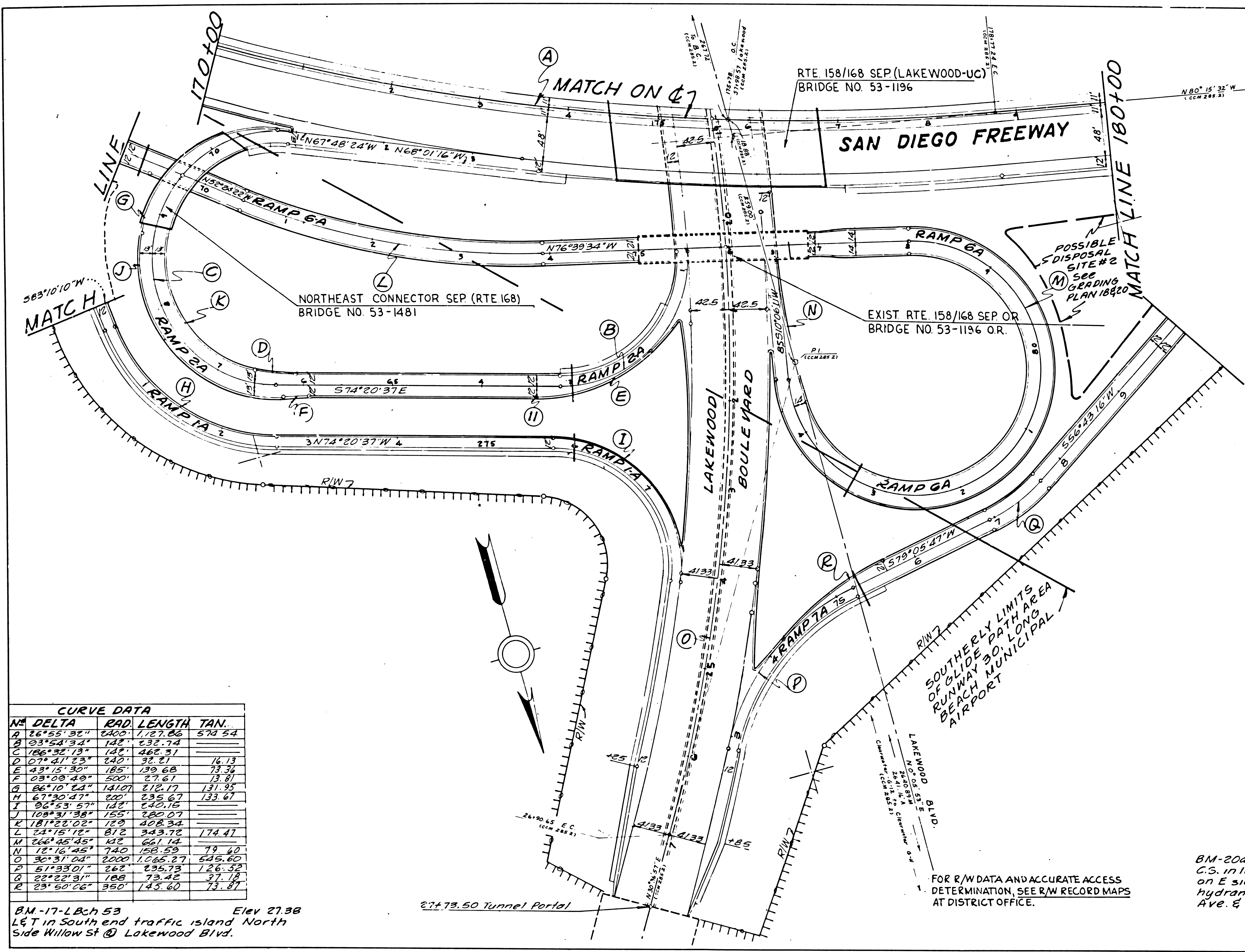
FOR R/W DATA AND ACCURATE ACCESS DETERMINATION, SEE R/W RECORD MAPS AT DISTRICT OFFICE.

B.M.-16-LBch-53 Elev 21.50
C.S. in Lead in Curb @ S.W. Cor. Willow St. and Park Ave; 3' W of B.C.R. 46' SW of P.P. #854647E

150-10

STATE OF CALIFORNIA
 HIGHWAY TRANSPORTATION AGENCY
 DEPARTMENT OF PUBLIC WORKS
 DIVISION OF HIGHWAYS
MONUMENTATION MAP
 No MF-1902-4

awhoy
 Deputy District Engineer



CURVE DATA

NO	DELTA	RAD.	LENGTH	TAN.
A	26°55'32"	2400'	1,127.86	578.54
B	03°54'34"	142'	632.74	
C	166°32'13"	142'	462.31	
D	07°41'23"	240'	32.71	16.13
E	43°15'30"	185'	139.68	73.36
F	03°19'49"	500'	27.61	13.81
G	86°10'24"	141.07'	212.17	131.95
H	67°30'47"	220'	235.67	133.67
I	02°53'57"	142'	640.16	
J	109°31'38"	155'	280.07	
K	181°22'02"	120'	402.34	
L	24°15'12"	812'	343.72	174.47
M	266°45'45"	132'	661.14	
N	12°16'45"	740'	158.59	79.60
O	30°31'04"	2000'	1,065.27	545.60
P	51°33'01"	262'	235.73	126.52
Q	22°22'31"	188'	73.42	37.18
R	23°50'26"	350'	145.60	73.87

BM-17-LBch 53 Elev 27.38
 L&T in South end traffic island North
 Side Willow St @ Lakewood Blvd.

27+73.50 Tunnel Portal

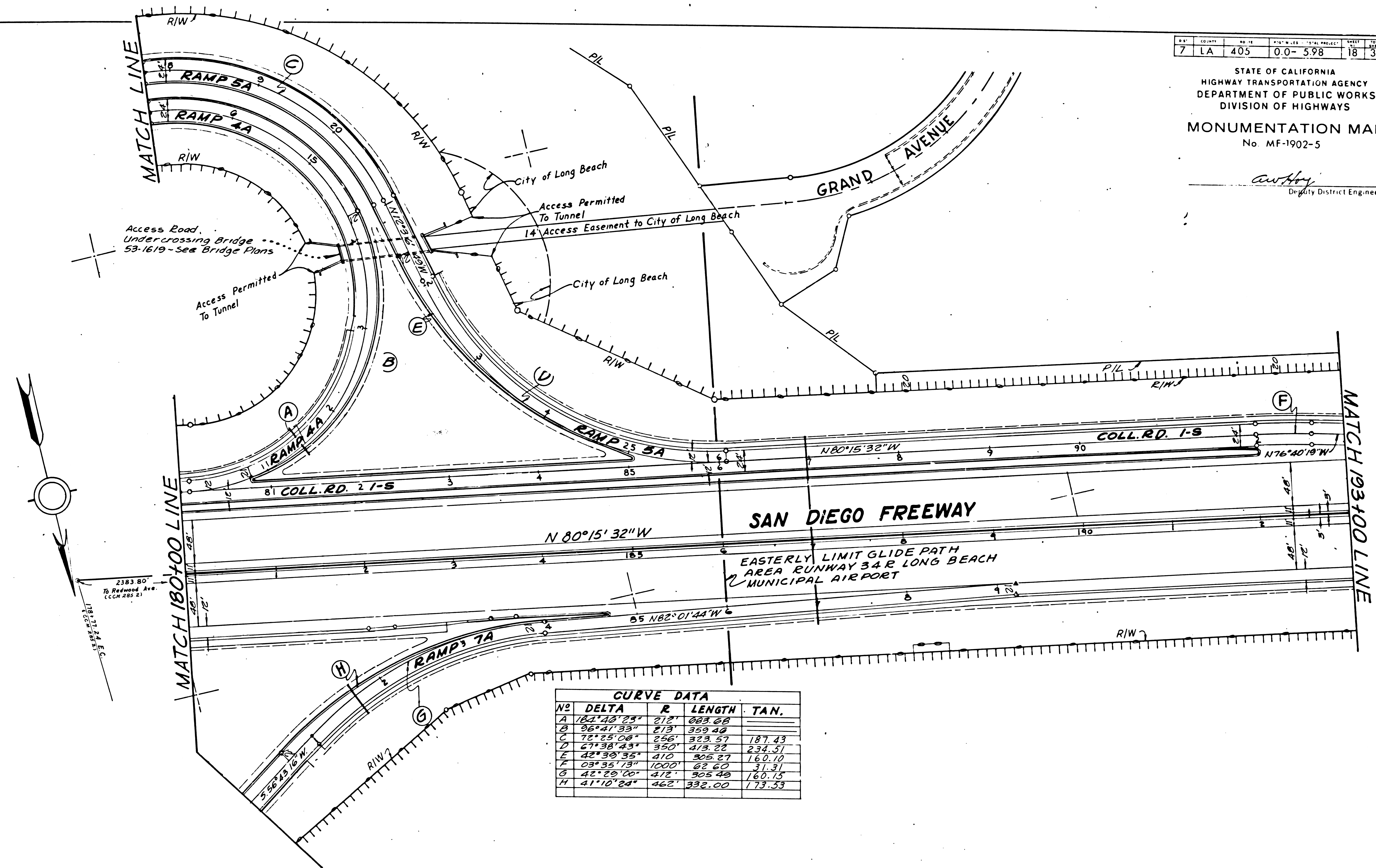
FOR R/W DATA AND ACCURATE ACCESS
 DETERMINATION, SEE R/W RECORD MAPS
 AT DISTRICT OFFICE.

BM-20a-LBch-53 Elev 40.93
 C.S. in lead in curb 315' N of S. end curb
 on E side Redondo Ave; 42' N.W. of fire
 hydrant; approx. 850' N of int. Redondo
 Ave. & Willow St.

SHEET NO.	TOTAL SHEETS	DATE	BY	CHECKED	APPROVED
7	18	LA	405	0.0-5.98	18 30

STATE OF CALIFORNIA
HIGHWAY TRANSPORTATION AGENCY
DEPARTMENT OF PUBLIC WORKS
DIVISION OF HIGHWAYS
MONUMENTATION MAP
No. MF-1902-5

Anthony
Deputy District Engineer



CURVE DATA				
NO.	DELTA	R.	LENGTH	TAN.
A	182° 40' 23"	212'	683.68	
B	96° 41' 33"	213'	359.40	
C	72° 25' 08"	258'	323.57	187.43
D	67° 38' 43"	350'	413.32	234.51
E	42° 30' 35"	410'	305.27	160.10
F	03° 35' 13"	1000'	62.60	31.31
G	42° 20' 00"	412'	305.40	160.15
H	41° 10' 24"	462'	332.00	173.53

B.M.-17-L Bch 53 Elev. 27.38
L & T. in South End Traffic Island North Side
Willow St @ Lakewood Blvd.

FOR R/W DATA AND ACCURATE ACCESS
DETERMINATION, SEE R/W RECORD MAPS
AT DISTRICT OFFICE.

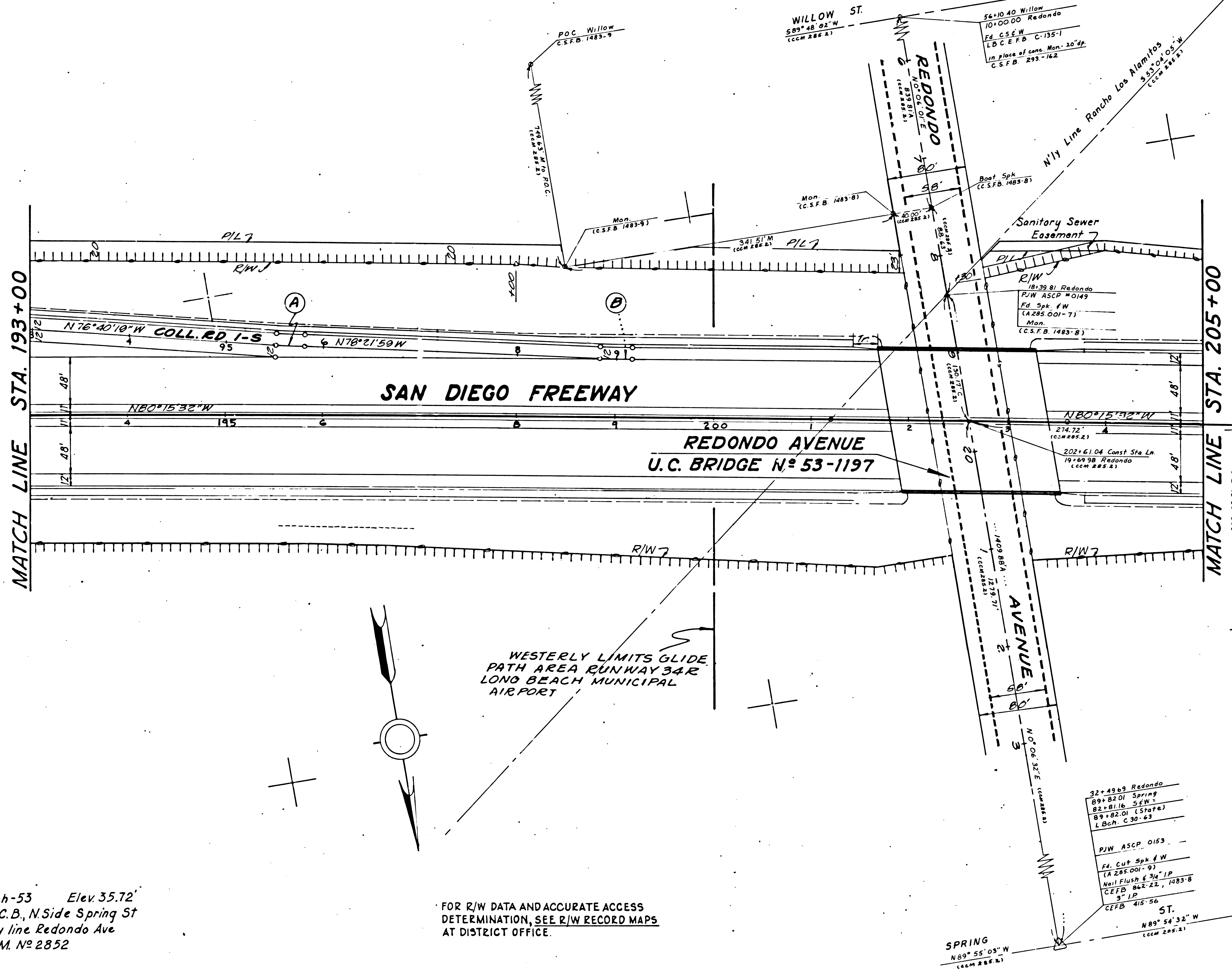
BM-20a-LBch-53 Elev. 40.93
CS. in lead in curb 316 N. of S. end curb on E. side
Redondo Ave; 42 NW of fire hydrant; approx. 860' N of
ints. Redondo Ave. & Willow St.

CURVE DATA			
No	DELTA	R	LENGTH TAN.
A	01°41'40"	1000'	20.57 14.79
B	01°53'35"	1000'	33.03 16.52

DATE	COUNTY	SECTION	PROJECT	SHEET	TOTAL SHEETS
7	LA	405	0.0-5.98	19	30

STATE OF CALIFORNIA
HIGHWAY TRANSPORTATION AGENCY
DEPARTMENT OF PUBLIC WORKS
DIVISION OF HIGHWAYS
MONUMENTATION MAP
No. MF-1902-6

Anthony
Civil Engineer



B.M. 20b-LBch-53 Elev. 35.72'
L&T in E end C.B., N Side Spring St
on W. property line Redondo Ave
Refer to C.C.M. No. 2852

FOR R/W DATA AND ACCURATE ACCESS
DETERMINATION, SEE R/W RECORD MAPS
AT DISTRICT OFFICE.

B.M. 20a-LBch-53 Elev. 40.93
CS in lead in Curb, 31'± N. of S. end Curb
on E. Side Redondo Ave 4'± N.W. fire
hydrant, Approx. 850' N. Willow and
Redondo.

150-10

CURVE DATA				
NO	DELTA	R.	LENGTH	TAN.
A	24° 30' 00"	3000'	1282.82	651.36
B	03° 48' 51"	1000'	66.37	33.30

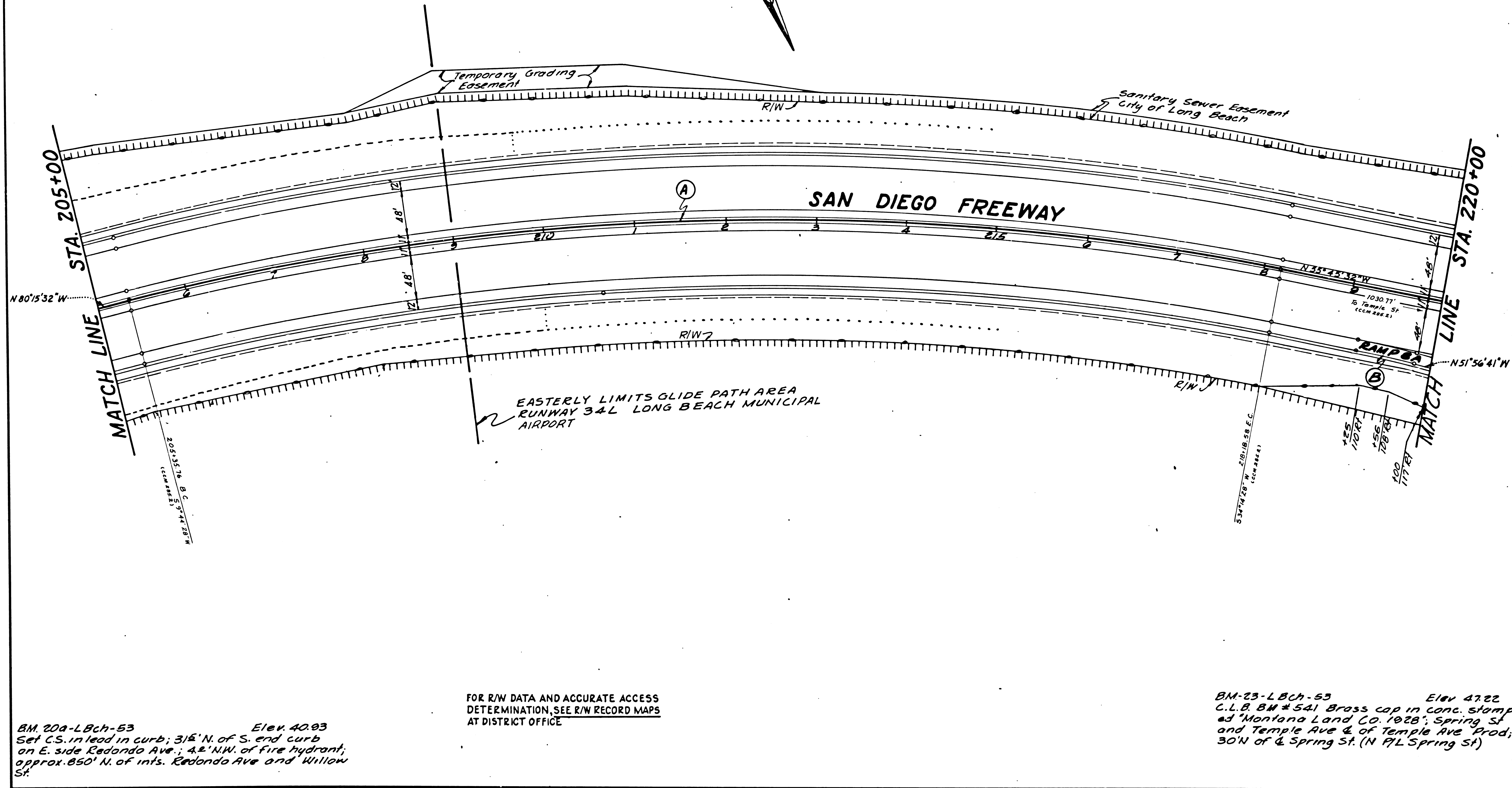
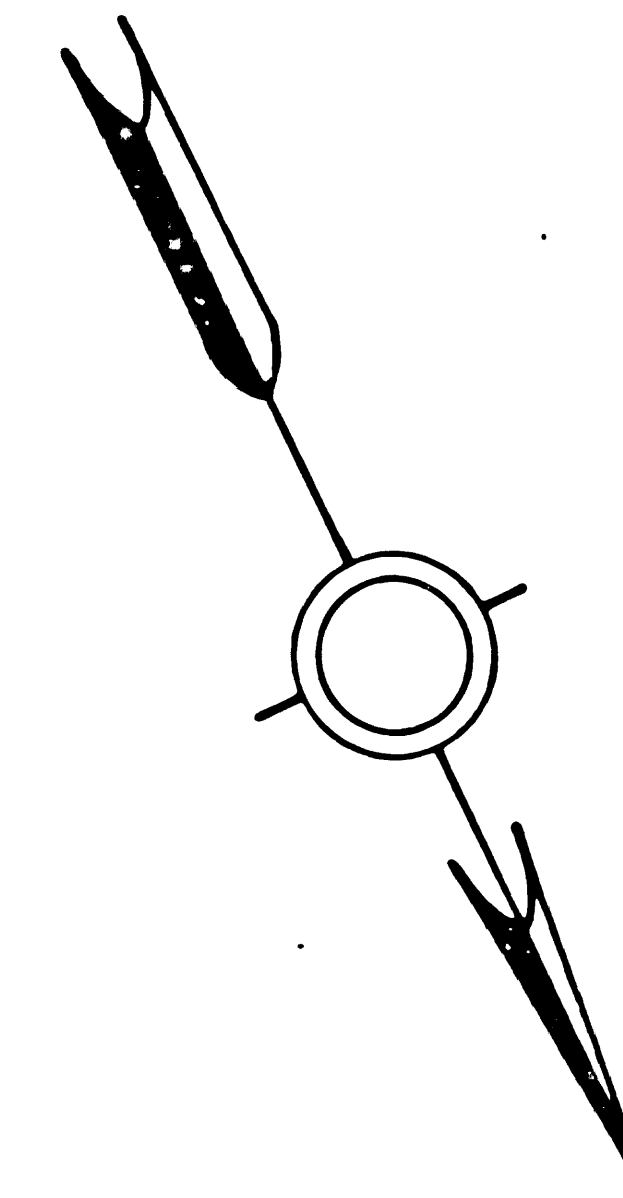
NO.	COUNTY	SHEET	TOTAL SHEETS
7	LA	405	0.0 - 5.89

STATE OF CALIFORNIA
HIGHWAY TRANSPORTATION AGENCY
DEPARTMENT OF PUBLIC WORKS
DIVISION OF HIGHWAYS

MONUMENTATION MAP

No. MF-1902-7

Anthony
Deputy District Engineer



BM. 20a-LBch-53 Elev. 40.93
Set C.S. in lead in curb; 316' N. of S. end curb
on E. side Redondo Ave.; 42' N.W. of fire hydrant;
approx. 850' N. of int. Redondo Ave and Willow
St.

FOR R/W DATA AND ACCURATE ACCESS
DETERMINATION, SEE R/W RECORD MAPS
AT DISTRICT OFFICE

BM-23-LBch-53 Elev. 47.22
C.L.B. BM # 541 Brass cap in conc. stamp
ad 'Montana Land Co. 1928'; Spring St
and Temple Ave & of Temple Ave Prod;
30' N of & Spring St. (N 7/8 Spring St)