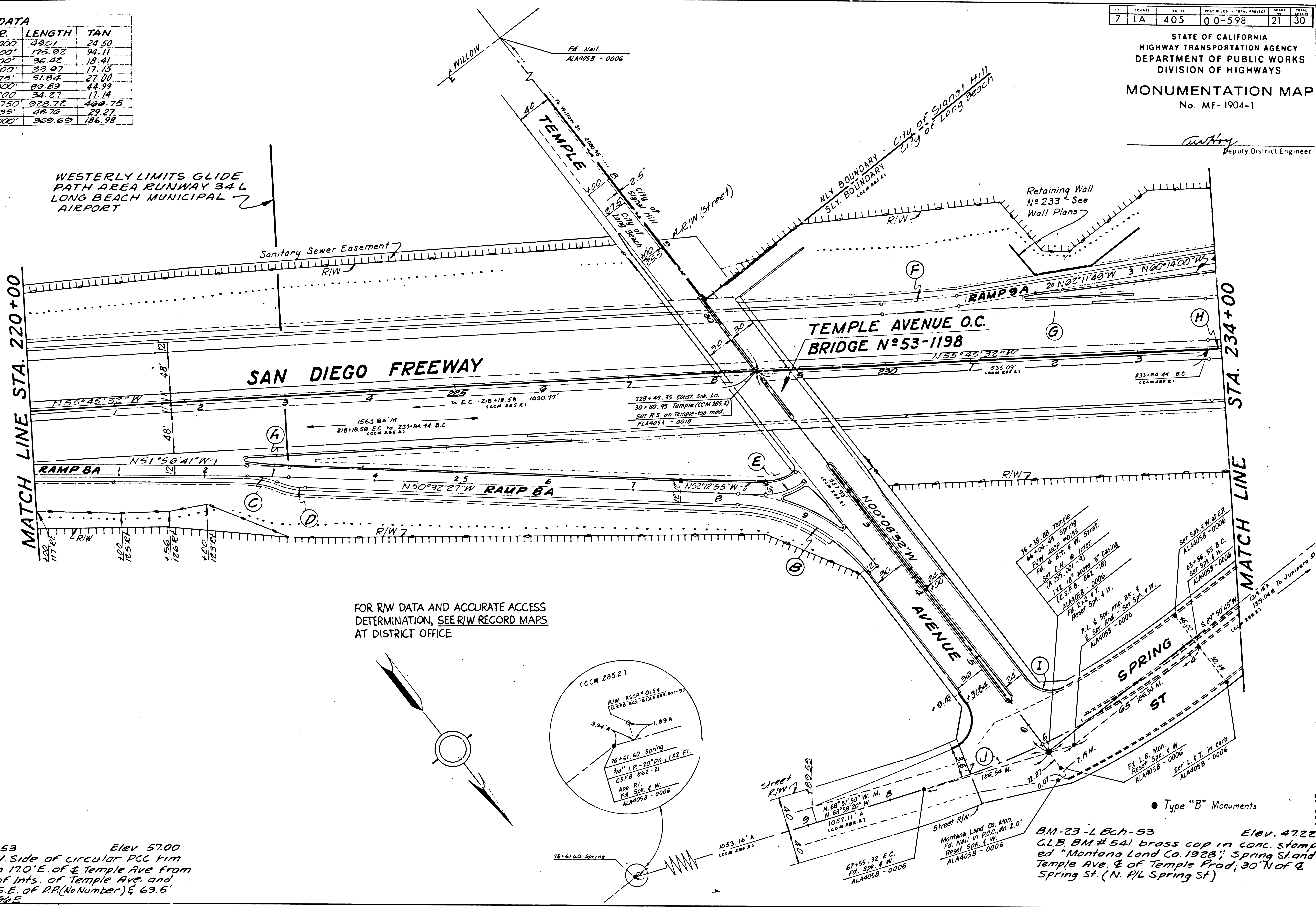


NO	DELTA	R.	LENGTH	TAN
A	01° 23' 18"	8000	4801	24.50
B	50° 23' 55"	100	175.92	94.11
C	60° 52' 04"	100	36.25	18.41
D	19° 27' 50"	100	33.07	17.15
E	30° 36' 05"	75	51.84	27.00
F	00° 26' 17"	800	89.83	44.99
G	01° 57' 49"	1000	34.27	17.14
H	12° 11' 23"	3750	928.72	460.75
I	70° 46' 08"	35	40.76	29.27
J	21° 10' 55"	1000	369.69	186.98

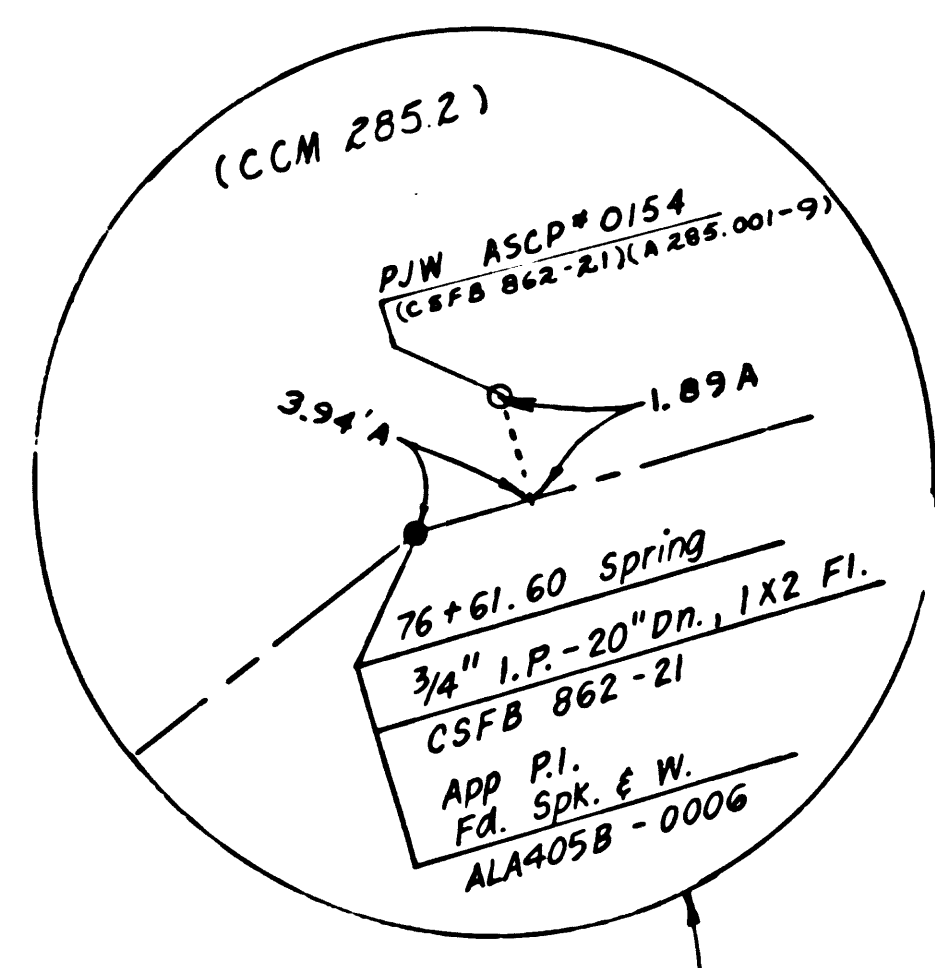
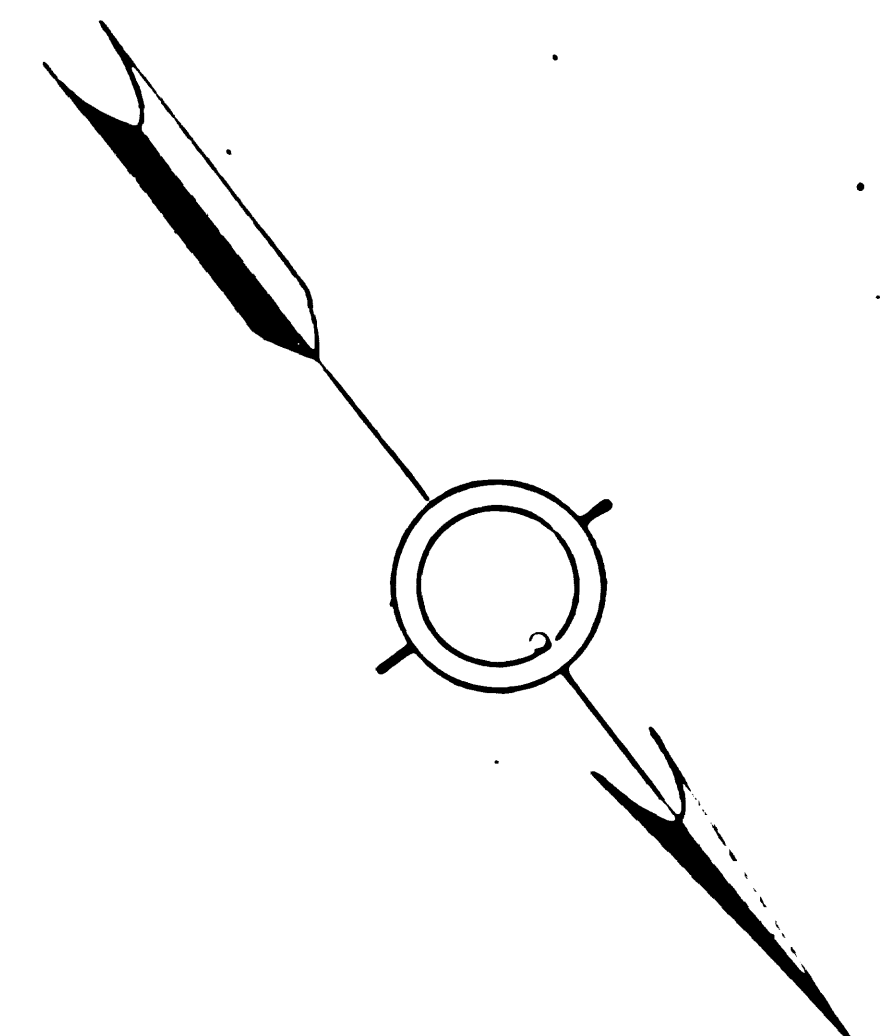
COUNTY	NO. 18	POST MILES - TOTAL PROJECT	SHEET NO.	TOTAL SHEETS
7	LA	405	0.0-5.98	21

STATE OF CALIFORNIA  
HIGHWAY TRANSPORTATION AGENCY  
DEPARTMENT OF PUBLIC WORKS  
DIVISION OF HIGHWAYS  
**MONUMENTATION MAP**  
No. MF-1904-1

*Anthony*  
Deputy District Engineer



FOR R/W DATA AND ACCURATE ACCESS DETERMINATION, SEE R/W RECORD MAPS AT DISTRICT OFFICE



BM-220-L Bch-53 Elev. 57.00  
C.S. in lead in W. Side of circular PCC Rim of M.H. Location 17.0' E. of  $\phi$  Temple Ave from a point 74'  $\pm$  S. of Ints. of Temple Ave. and Spring St. 35.0' S.E. of RP (No Number) & 63.5' S. of P.P. # 022000E

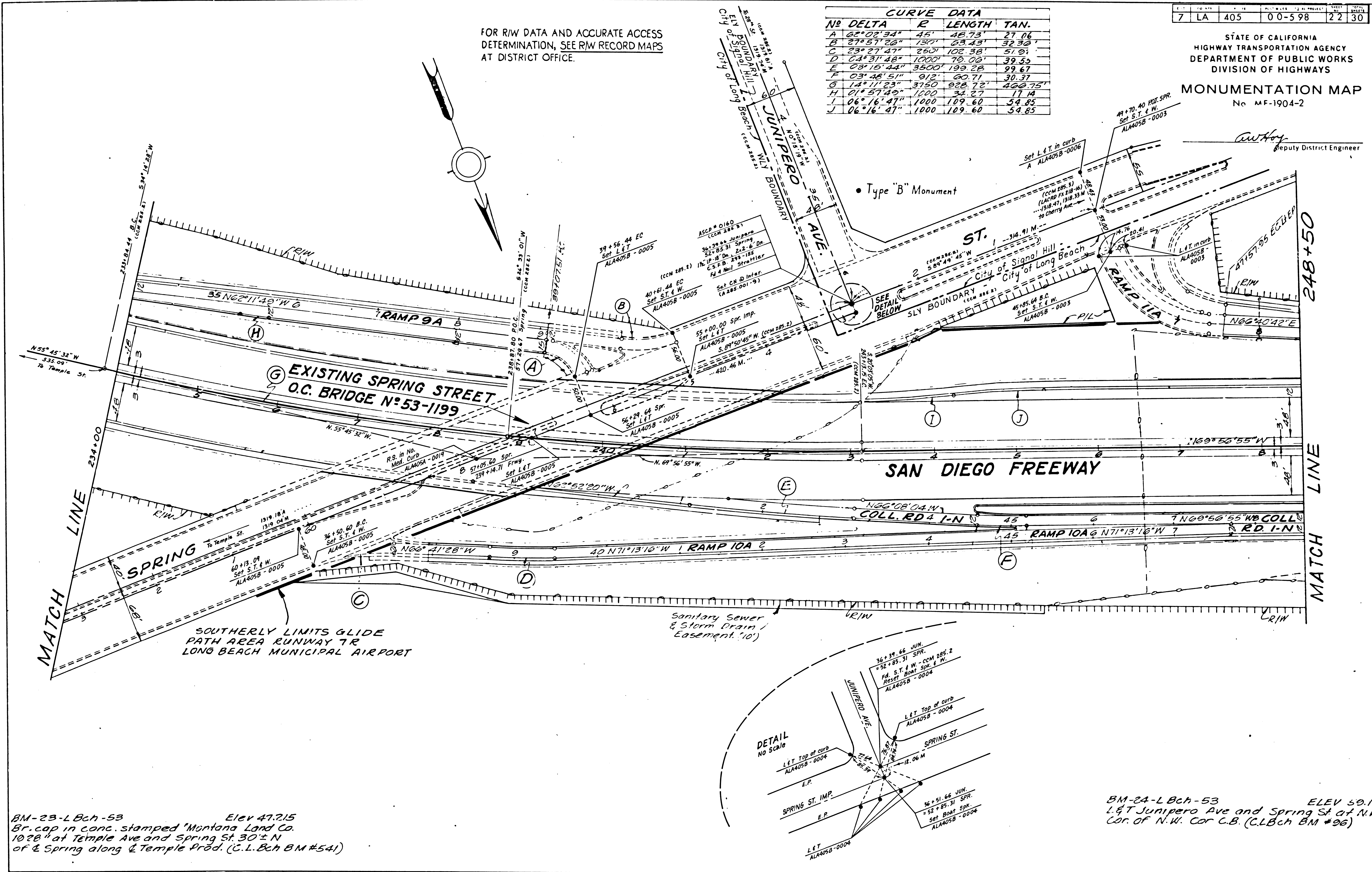
BM-23-L Bch-53 Elev. 47.22  
CLB BM # 541 brass cap in conc. stamped "Montana Land Co. 1928"; Spring Stand Temple Ave.  $\phi$  of Temple Prod; 30' N of  $\phi$  Spring St. (N. P/L Spring St.)

F.M. 20371 -SHT. 1

CURVE DATA				
NO	DELTA	R	LENGTH	TAN.
A	62°02'34"	45'	48.73'	27.06'
B	27°57'26"	130'	63.43'	32.30'
C	23°27'47"	250'	102.38'	51.01'
D	64°31'48"	1000'	79.02'	39.52'
E	03°15'44"	3500'	199.28'	99.67'
F	03°48'51"	912'	60.71'	30.37'
G	14°11'23"	3750'	928.72'	460.75'
H	01°57'49"	1000'	34.27'	17.14'
I	06°16'47"	1000'	109.60'	54.85'
J	06°16'47"	1000'	109.60'	54.85'

FOR R/W DATA AND ACCURATE ACCESS DETERMINATION, SEE R/W RECORD MAPS AT DISTRICT OFFICE.

*Anthony*  
Deputy District Engineer



BM-23-L Bch-53 Elev 47.215  
Br. cap in conc. stamped 'Montana Land Co.  
1028" at Temple Ave and Spring St. 30"± N  
of & Spring along & Temple Prod. (C.L. Bch BM #541)

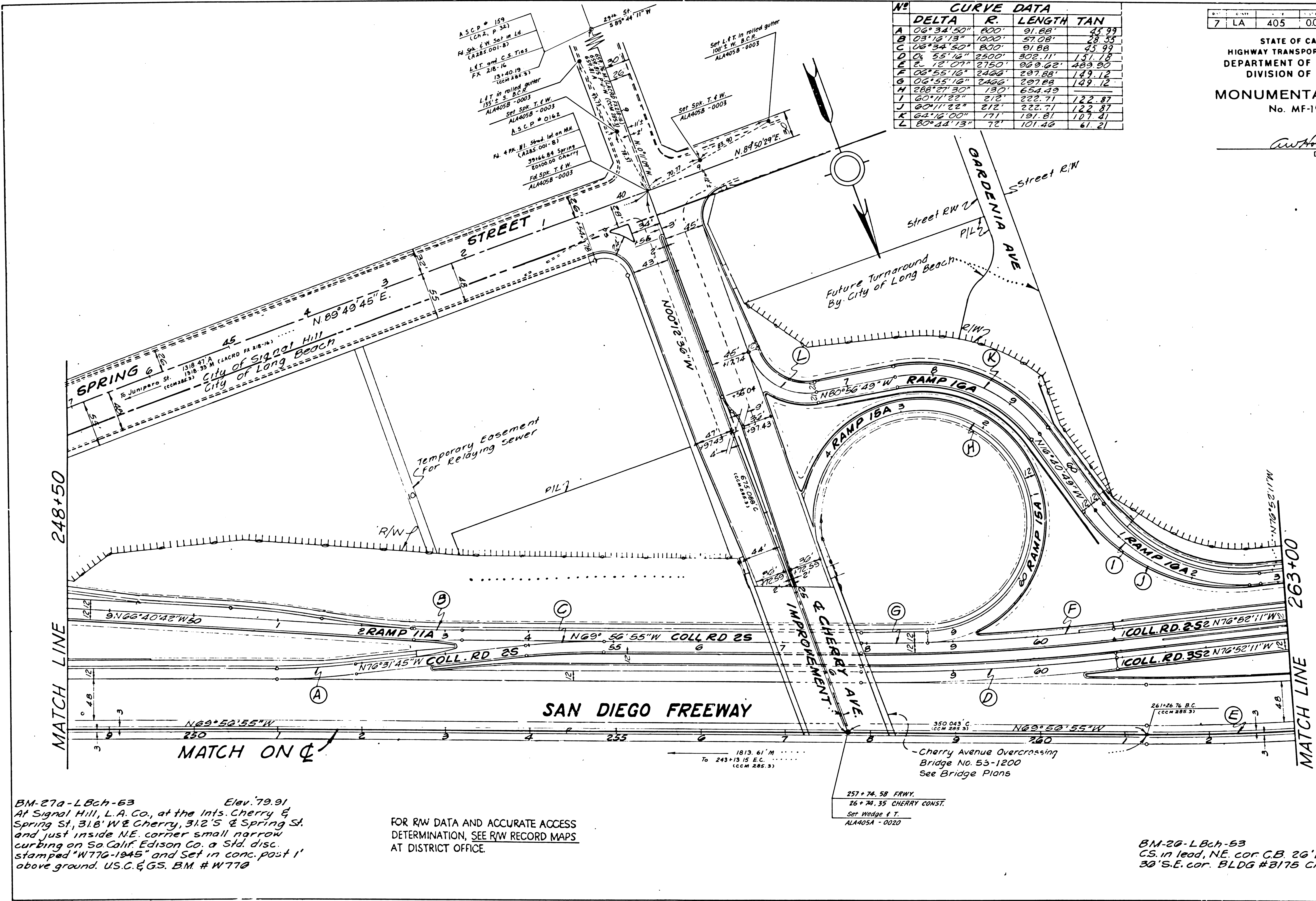
BM-24-L Bch-53 Elev 50.13  
L&T Junipero Ave and Spring St. at N.W.  
Cor. of N.W. Cor. C.B. (C.L. Bch BM #96)

CURVE DATA			
N <sup>o</sup>	DELTA	R	LENGTH TAN
A	06°34'50"	800'	91.88'
B	03°16'13"	1000'	57.08'
C	06°34'50"	800'	91.88'
D	06°55'16"	2500'	302.11'
E	12°07'17"	2750'	369.62'
F	06°55'16"	2466'	287.88'
G	06°55'16"	2466'	287.88'
H	288°27'30"	130'	654.49'
I	60°11'22"	212'	222.71'
J	60°11'22"	212'	222.71'
K	64°16'00"	171'	191.81'
L	80°44'13"	72'	101.46'

7	LA	405	00-598	23	30
---	----	-----	--------	----	----

STATE OF CALIFORNIA  
HIGHWAY TRANSPORTATION AGENCY  
DEPARTMENT OF PUBLIC WORKS  
DIVISION OF HIGHWAYS  
**MONUMENTATION MAP**  
No. MF-1904-3

*Anthony*  
Deputy District Engineer



BM-27a-LBch-63 Elev. 79.91  
At Signal Hill, L.A. Co., at the Ints. Cherry & Spring St., 31.8' W & Cherry, 31.2' S & Spring St. and just inside NE corner small narrow curbing on So. Calif. Edison Co. a Std. disc. stamped "W770-1945" and Set in conc. post 1' above ground. U.S.C. & G.S. B.M. # W770

FOR R/W DATA AND ACCURATE ACCESS DETERMINATION, SEE R/W RECORD MAPS AT DISTRICT OFFICE.

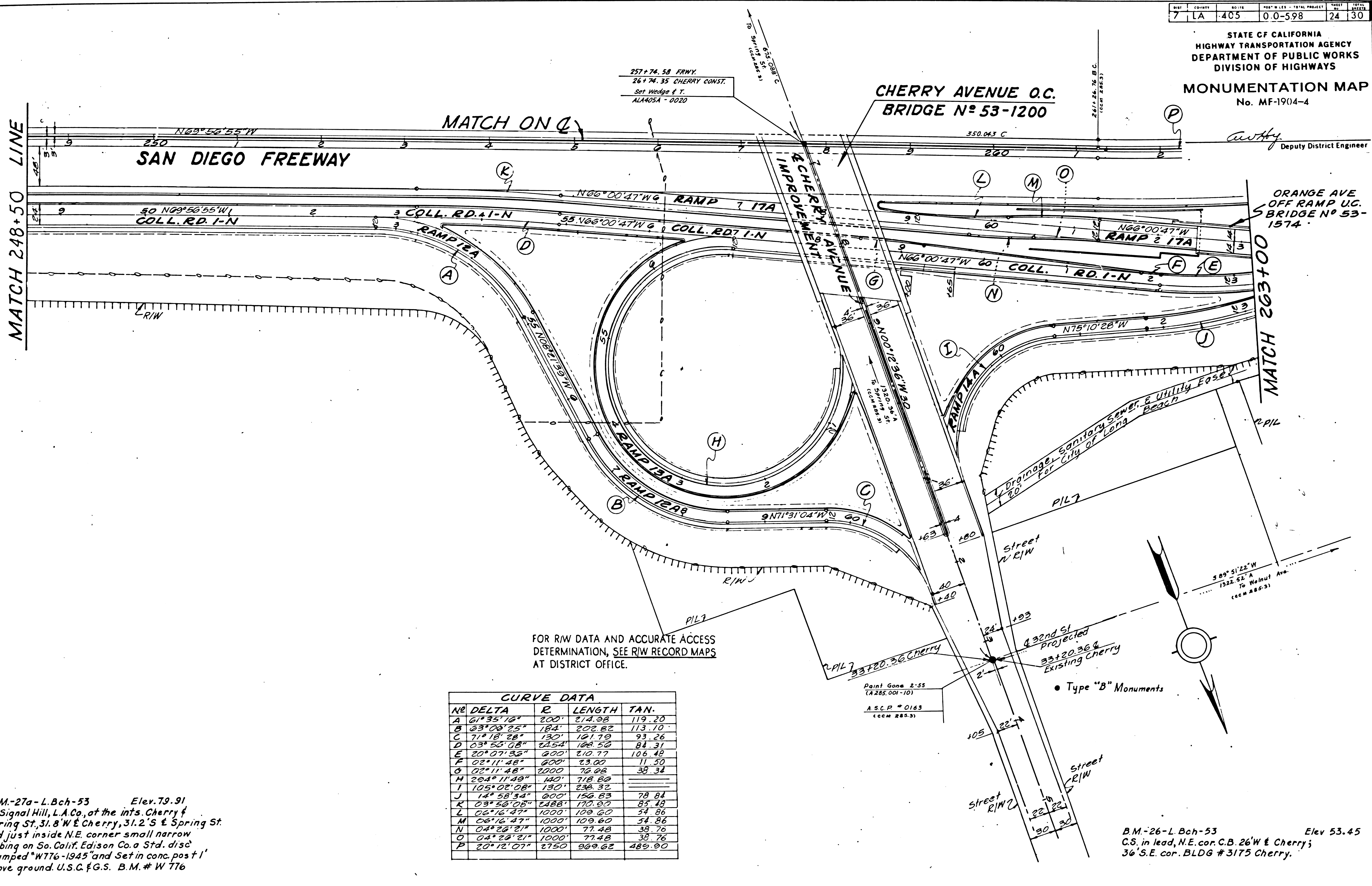
257+74.58 FRWY.  
26+74.35 CHERRY CONST.  
Set Wedge & T.  
ALA405A-0020

BM-20-LBch-53 Elev. 53.45  
C.S. in lead, NE. cor. C.B. 26' W & Cherry;  
30' S.E. cor. BLDG #3175 Cherry.

DATE	COUNTY	NO. 12	POST MILES - TOTAL PROJECT	SHEET NO.	TOTAL SHEETS
7	LA	405	0.0-598	24	30

STATE OF CALIFORNIA  
HIGHWAY TRANSPORTATION AGENCY  
DEPARTMENT OF PUBLIC WORKS  
DIVISION OF HIGHWAYS  
**MONUMENTATION MAP**  
No. MF-1904-4

*Authy.*  
Deputy District Engineer



FOR R/W DATA AND ACCURATE ACCESS DETERMINATION, SEE R/W RECORD MAPS AT DISTRICT OFFICE.

NO	DELTA	R	LENGTH	TAN.
A	67°35'16"	200'	214.36	119.20
B	63°08'25"	184'	202.82	113.10
C	71°18'28"	130'	141.39	93.26
D	03°50'08"	2154'	168.50	84.31
E	20°07'35"	600'	210.77	106.48
F	02°11'48"	600'	23.00	11.50
G	02°11'48"	2000'	76.08	38.34
H	294°11'48"	140'	718.60	
I	105°02'08"	130'	236.32	
J	14°58'34"	600'	156.83	78.84
K	03°50'08"	2154'	170.00	85.12
L	06°16'47"	1000'	109.60	54.86
M	06°16'47"	1000'	109.60	54.86
N	04°26'21"	1000'	77.48	38.76
O	04°26'21"	1000'	77.48	38.76
P	20°12'07"	2750'	969.62	489.90

B.M.-27a-L.Bch-53 Elev. 79.91  
At Signal Hill, L.A. Co., at the int's. Cherry & Spring St., 31.8' W & Cherry, 31.2' S & Spring St. and just inside N.E. corner small narrow curbing on So. Calif. Edison Co. a Std. disc stamped "W776-1945" and Set in conc. post 1' above ground. U.S.C. & G.S. B.M. # W 776

B.M.-26-L.Bch-53 Elev. 53.45  
C.S. in lead, N.E. cor. C.B. 26' W & Cherry; 36' S.E. cor. BLDG # 3175 Cherry.

150-10

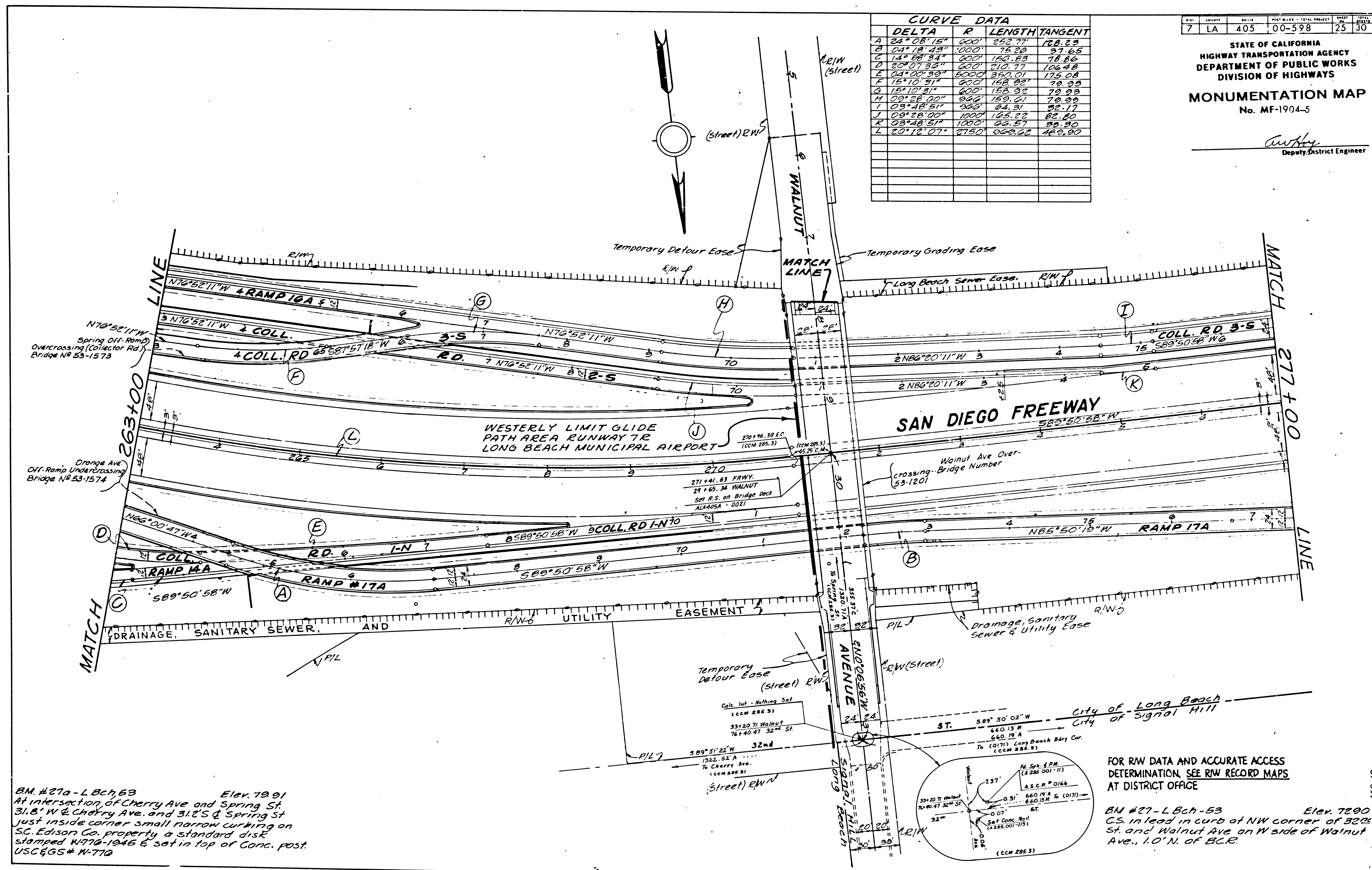
CURVE DATA				
DELTA	R	LENGTH	TANGENT	
A	24° 08' 15"	600'	252.77'	128.23
B	04° 18' 49"	1000'	75.20	37.65
C	14° 58' 34"	600'	150.85	78.86
D	22° 07' 33"	600'	212.77	106.48
E	04° 00' 30"	600'	250.07	125.08
F	15° 10' 51"	600'	158.32	79.38
G	15° 10' 51"	600'	158.32	79.38
H	09° 28' 00"	922'	159.61	79.99
I	03° 48' 51"	900'	64.31	32.17
J	09° 28' 00"	1000'	165.22	82.80
K	03° 48' 51"	1000'	66.57	33.30
L	20° 12' 07"	2150'	669.62	469.90

DIST.	COUNTY	ROUTE	POST MILES - TOTAL PROJECT	SHEET NO.	TOTAL SHEETS
7	LA	405	00-598	25	30

STATE OF CALIFORNIA  
HIGHWAY TRANSPORTATION AGENCY  
DEPARTMENT OF PUBLIC WORKS  
DIVISION OF HIGHWAYS

**MONUMENTATION MAP**  
No. MF-1904-5

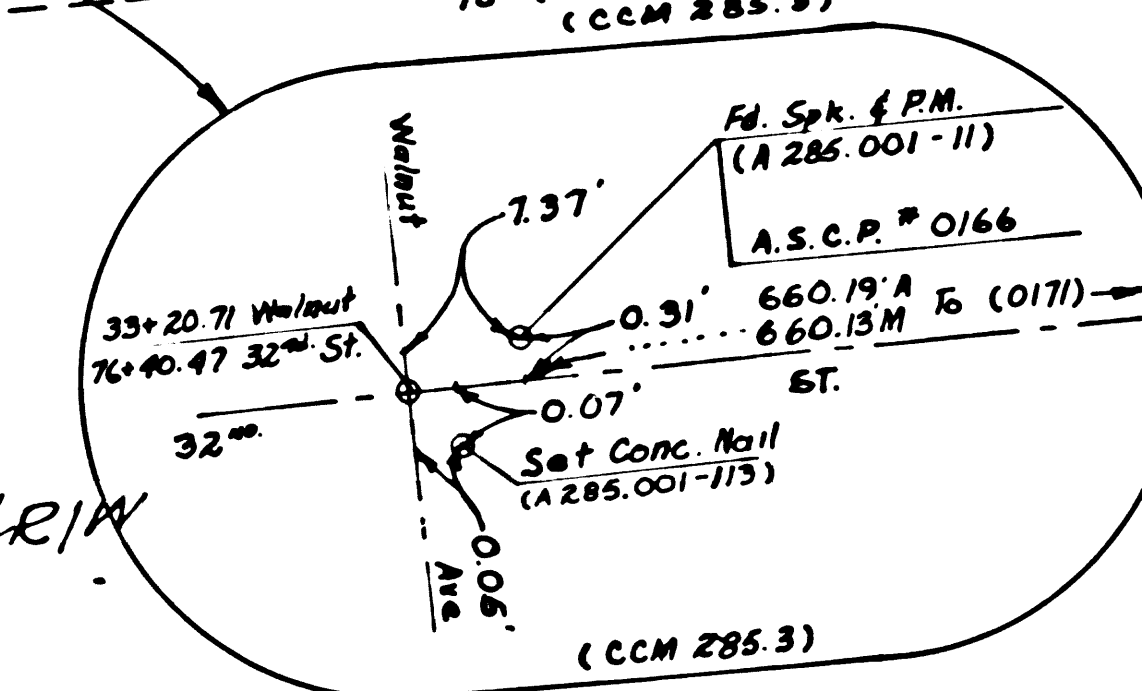
*Anthony*  
Deputy District Engineer



BM #27a - L Bch, 63 Elev. 79.91  
At intersection of Cherry Ave and Spring St.  
31.8' W & Cherry Ave. and 31.2' S & Spring St  
just inside corner small narrow curbing on  
S.C. Edison Co. property a standard disk  
stamped W770-1946 & set in top of Conc. post.  
USC & GS # N-770

FOR R/W DATA AND ACCURATE ACCESS  
DETERMINATION, SEE R/W RECORD MAPS  
AT DISTRICT OFFICE

BM #27 - L Bch - 53 Elev. 7290.1  
C.S. in lead in curb at NW corner of 3225  
St. and Walnut Ave on W side of Walnut  
Ave., 1.0' N. of B.C.R.



150-10

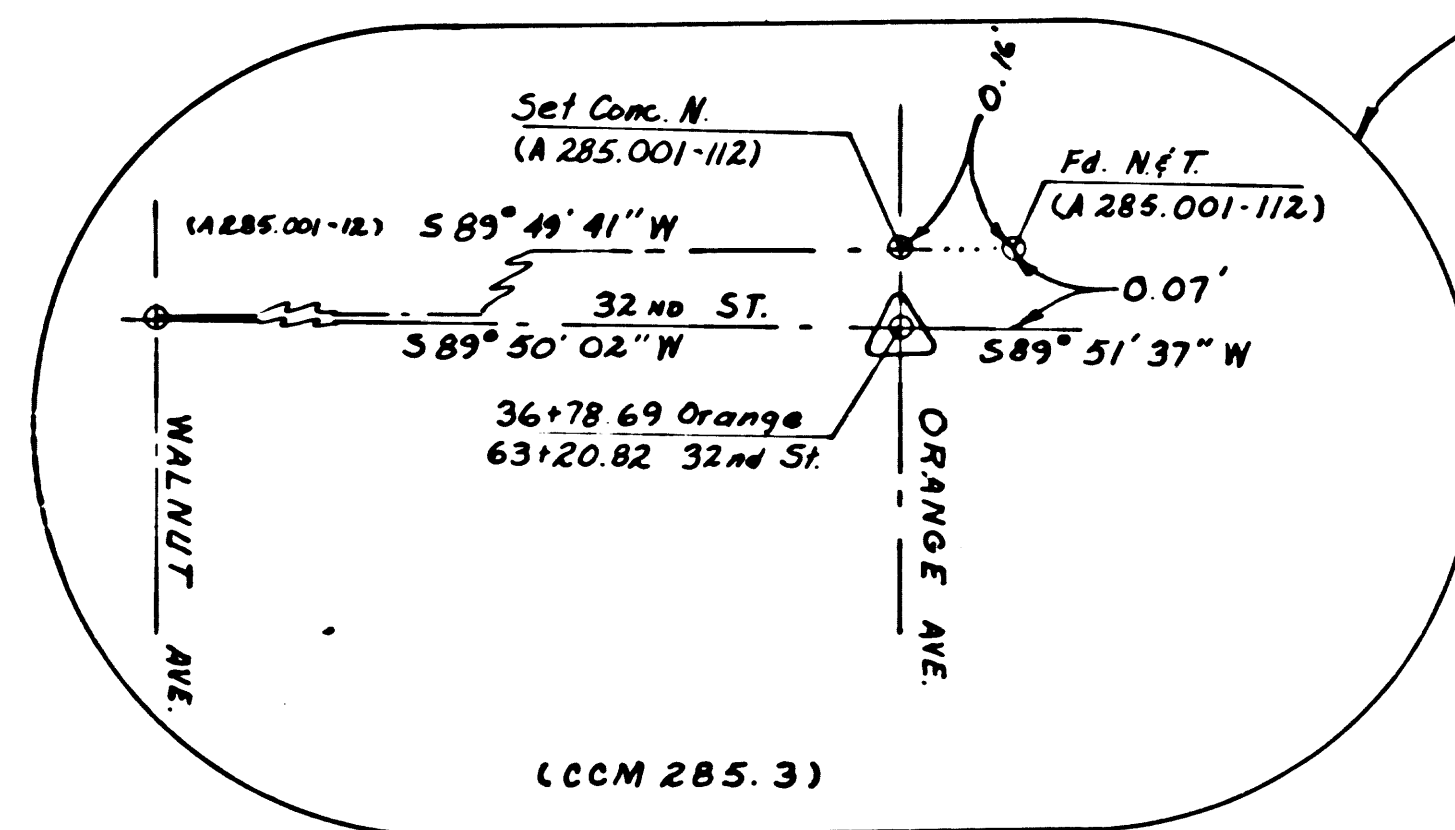
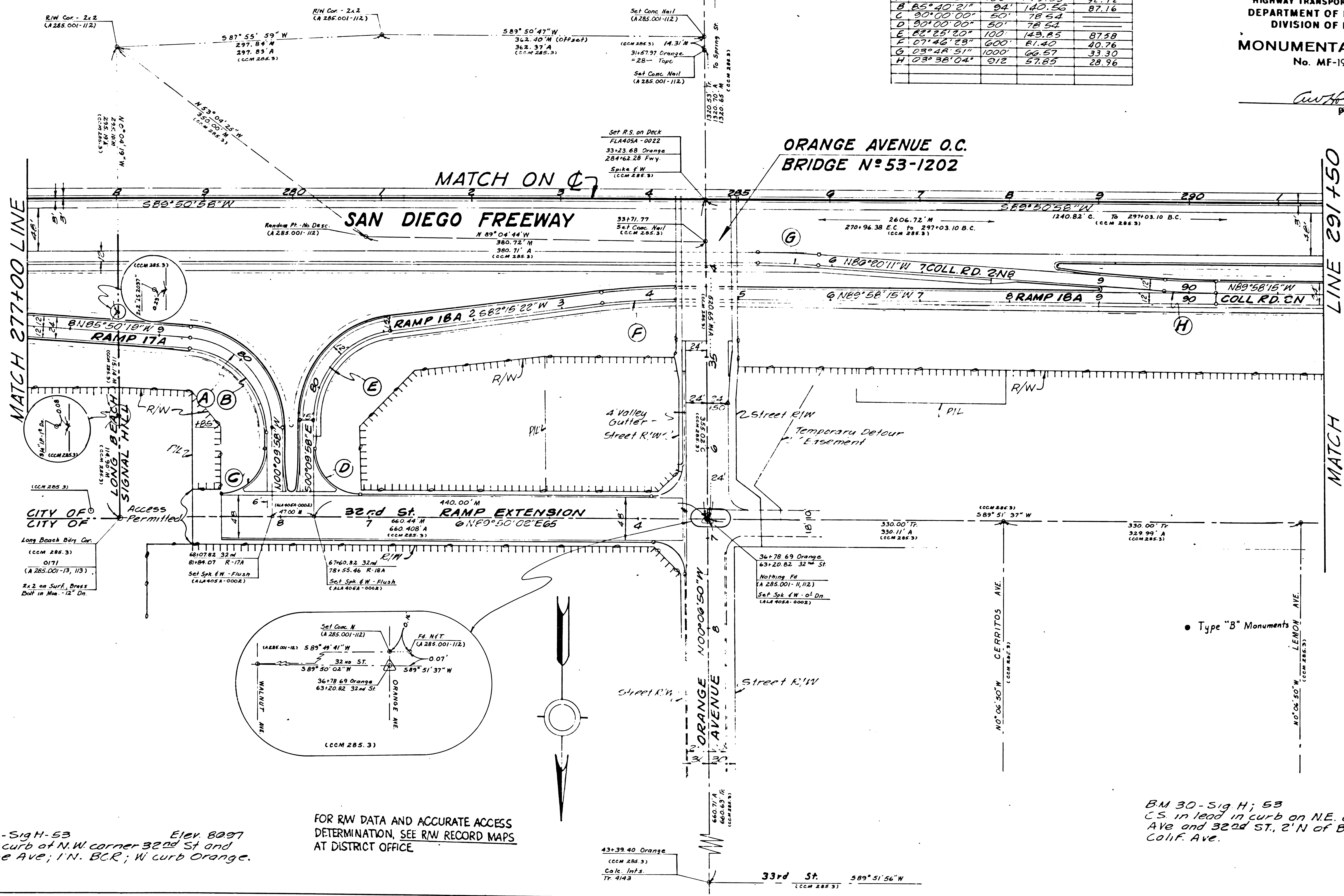


7	LA	405	0.0-5.98	27	30
---	----	-----	----------	----	----

STATE OF CALIFORNIA  
HIGHWAY TRANSPORTATION AGENCY  
DEPARTMENT OF PUBLIC WORKS  
DIVISION OF HIGHWAYS  
**MONUMENTATION MAP**  
No. MF-1904-7

*Anthony*  
Deputy District Engineer

CURVE DATA			
NO	DELTA	R	LENGTH TANGENT
A	85°40'21"	100'	140.53 92.72
B	85°40'21"	94'	140.53 87.16
C	90°00'00"	50'	78.54
D	90°00'00"	50'	78.54
E	82°25'20"	100'	143.85 87.58
F	07°46'23"	600'	81.40 40.76
G	03°48'51"	1000'	66.57 33.30
H	03°38'04"	912'	57.85 28.96



BM 28-Sig H-53 Elev. 8097  
CS in curb at N.W. corner 32nd St and Orange Ave; 1' N. B.C.R.; W curb Orange.

FOR RW DATA AND ACCURATE ACCESS DETERMINATION, SEE RW RECORD MAPS AT DISTRICT OFFICE

BM 30-Sig H; 53 Elev. 8098  
CS in lead in curb on N.E. corner of Calif. Ave and 32nd St., 2' N of B.C.R. E. side of Calif. Ave.

7	LA	405	0.0-5.98	28	30
---	----	-----	----------	----	----

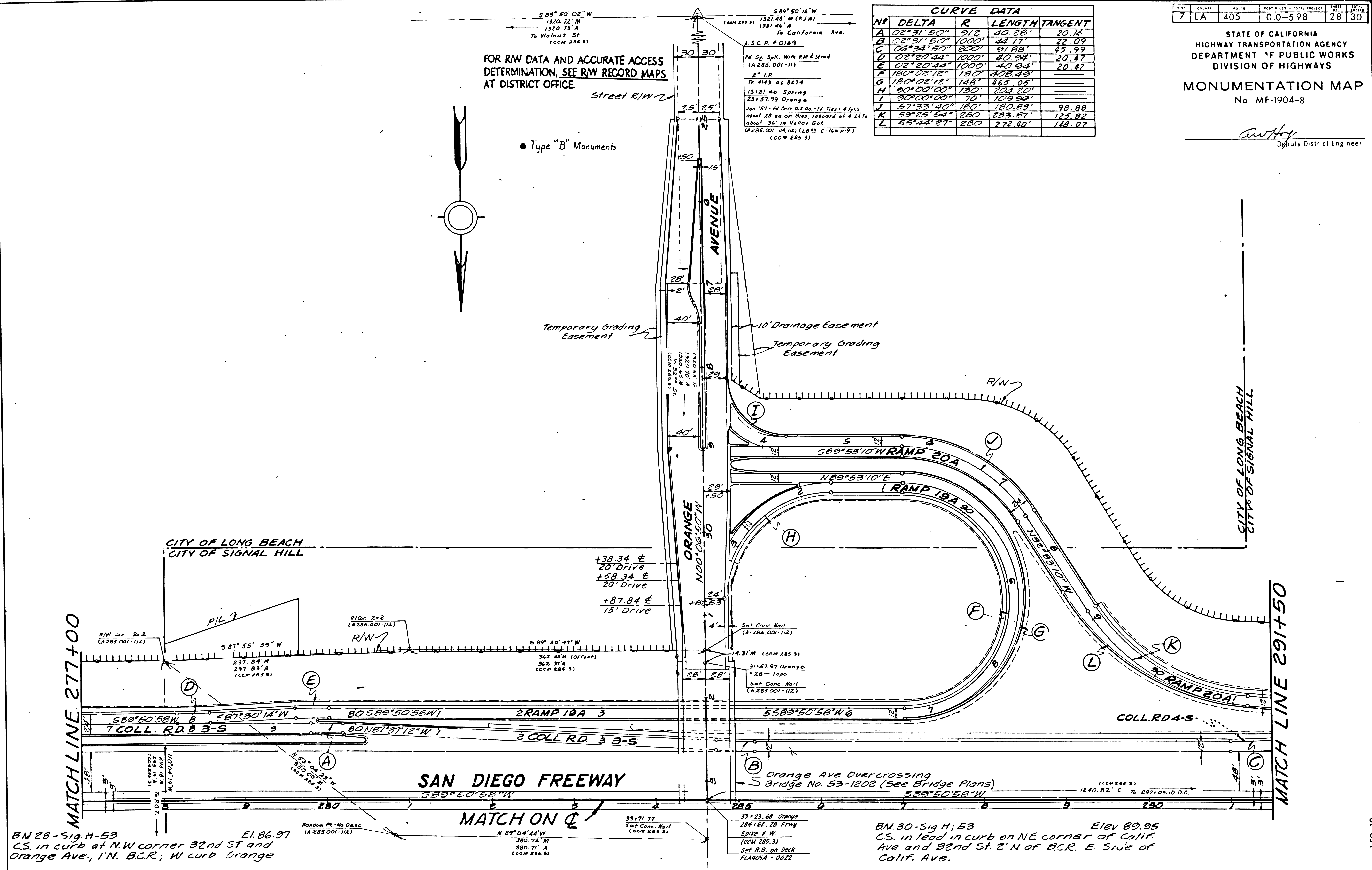
STATE OF CALIFORNIA  
HIGHWAY TRANSPORTATION AGENCY  
DEPARTMENT OF PUBLIC WORKS  
DIVISION OF HIGHWAYS  
MONUMENTATION MAP  
No. MF-1904-8

*Anthony*  
Deputy District Engineer

NO	DELTA	R	LENGTH	TANGENT
A	02°31'50"	912	20.28'	20.14'
B	02°31'50"	1000'	44.17'	22.09'
C	02°31'50"	800'	31.88'	45.99'
D	02°20'44"	1000'	40.94'	20.47'
E	02°20'44"	1000'	40.94'	20.47'
F	180°02'12"	150'	408.43'	
G	180°02'12"	148'	465.05'	
H	90°00'00"	130'	204.20'	
I	90°00'00"	70'	109.96'	
J	57°33'40"	180'	180.83'	98.88'
K	53°25'54"	280'	293.87'	125.82'
L	55°44'27"	280'	272.40'	148.07'

FOR RW DATA AND ACCURATE ACCESS DETERMINATION, SEE RW RECORD MAPS AT DISTRICT OFFICE.

• Type "B" Monuments



BN 28-Sig. H-53  
C.S. in curb at N.W. corner 32nd St and Orange Ave., 1' N. B.C.R.; W curb Orange.

Random Pt. - No Desc. (A 285.001-112)

N 89°04'44"W  
380.72' M  
380.71' A  
(ccm 285.3)

53+71.77  
Set Conc. Nail  
(ccm 285.3)

33+23.68 Orange  
284+62.28 Frwy  
Spike E.W.  
(ccm 285.3)  
Set R.S. on Deck  
FLA405A-0022

BN 30-Sig. H; 53  
C.S. in lead in curb on NE corner of Calif. Ave and 32nd St. 2' N. of B.C.R. E. Side of Calif. Ave.  
Elev 89.95



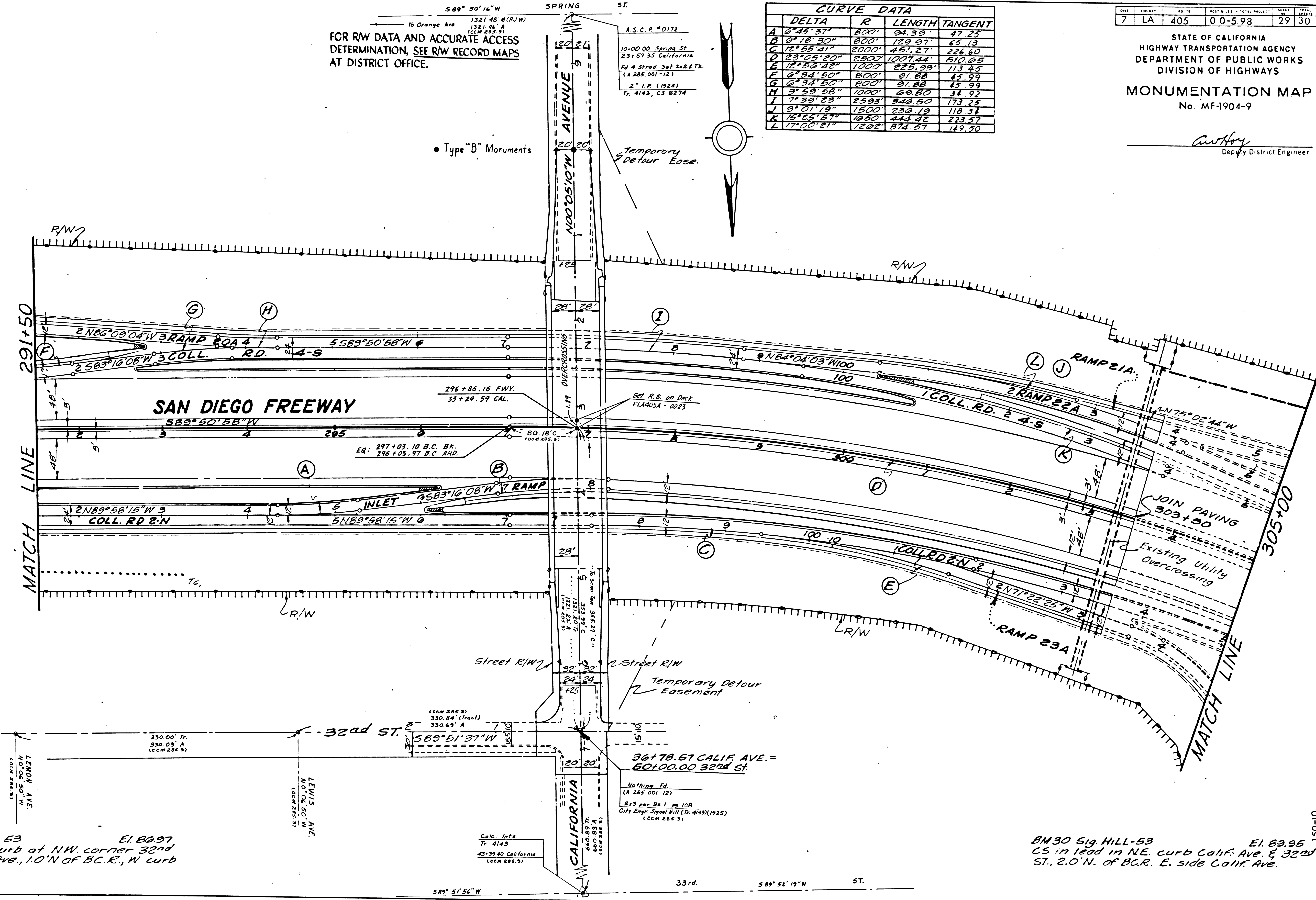
589° 50' 16" W SPRING ST.  
 To Orange Ave. 1321.48' M (P.W.)  
 1321.46' A  
 CCM 286.31  
 FOR RW DATA AND ACCURATE ACCESS DETERMINATION, SEE RW RECORD MAPS AT DISTRICT OFFICE.

CURVE DATA			
DELTA	R	LENGTH	TANGENT
A 6° 45' 37"	800'	84.39'	47.25'
B 9° 18' 30"	800'	120.97'	65.13'
C 12° 58' 41"	2000'	451.27'	226.60'
D 23° 25' 20"	2500'	1007.44'	510.05'
E 18° 52' 48"	1000'	225.93'	113.45'
F 2° 34' 50"	800'	91.88'	45.99'
G 2° 34' 50"	800'	91.88'	45.99'
H 3° 58' 58"	1000'	69.80'	34.92'
I 7° 39' 23"	2500'	542.60'	173.21'
J 9° 01' 19"	1500'	232.19'	118.34'
K 18° 25' 27"	1050'	444.42'	223.57'
L 17° 00' 21"	1202'	374.57'	149.50'

DIST	COUNTY	NO. 12	POST M. 12 - 12.00	PROJECT	SHEET	TOTAL SHEETS
7	LA	405	0.0-5.98		29	30

STATE OF CALIFORNIA  
 HIGHWAY TRANSPORTATION AGENCY  
 DEPARTMENT OF PUBLIC WORKS  
 DIVISION OF HIGHWAYS  
**MONUMENTATION MAP**  
 No. MF-1904-9

*awhoy*  
 Deputy District Engineer



BM-28 Sig Hill-53 El. 89.97  
 CS in lead in curb at NW corner 32nd St. & Orange Ave., 10' N of B.C.R., W curb Orange Ave.

Calc. Info.  
 TP 4143  
 43-3940 California  
 CCM 286.31

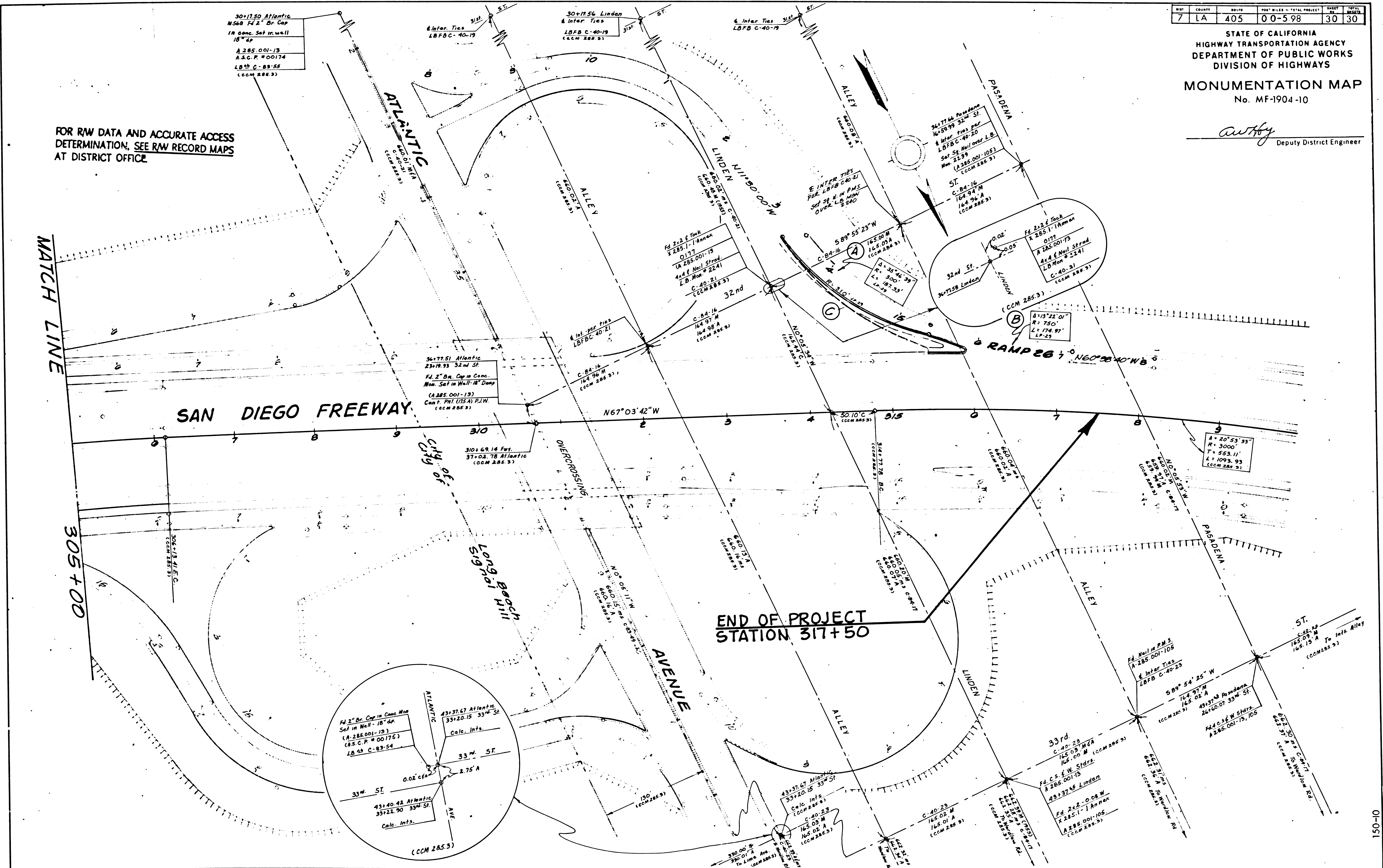
BM-30 Sig Hill-53 El. 89.95  
 CS in lead in NE curb Calif. Ave. & 32nd St., 2.0' N. of B.C.R. E. side Calif. Ave.

SHEET	COUNTY	SECTION	POST MILES - TOTAL PROJECT	SHEET	TOTAL SHEETS
7	LA	405	0 0-5.98	30	30

STATE OF CALIFORNIA  
HIGHWAY TRANSPORTATION AGENCY  
DEPARTMENT OF PUBLIC WORKS  
DIVISION OF HIGHWAYS  
**MONUMENTATION MAP**  
No. MF-1904-10

*awh*  
Deputy District Engineer

FOR RAW DATA AND ACCURATE ACCESS  
DETERMINATION, SEE RAW RECORD MAPS  
AT DISTRICT OFFICE.



150-10