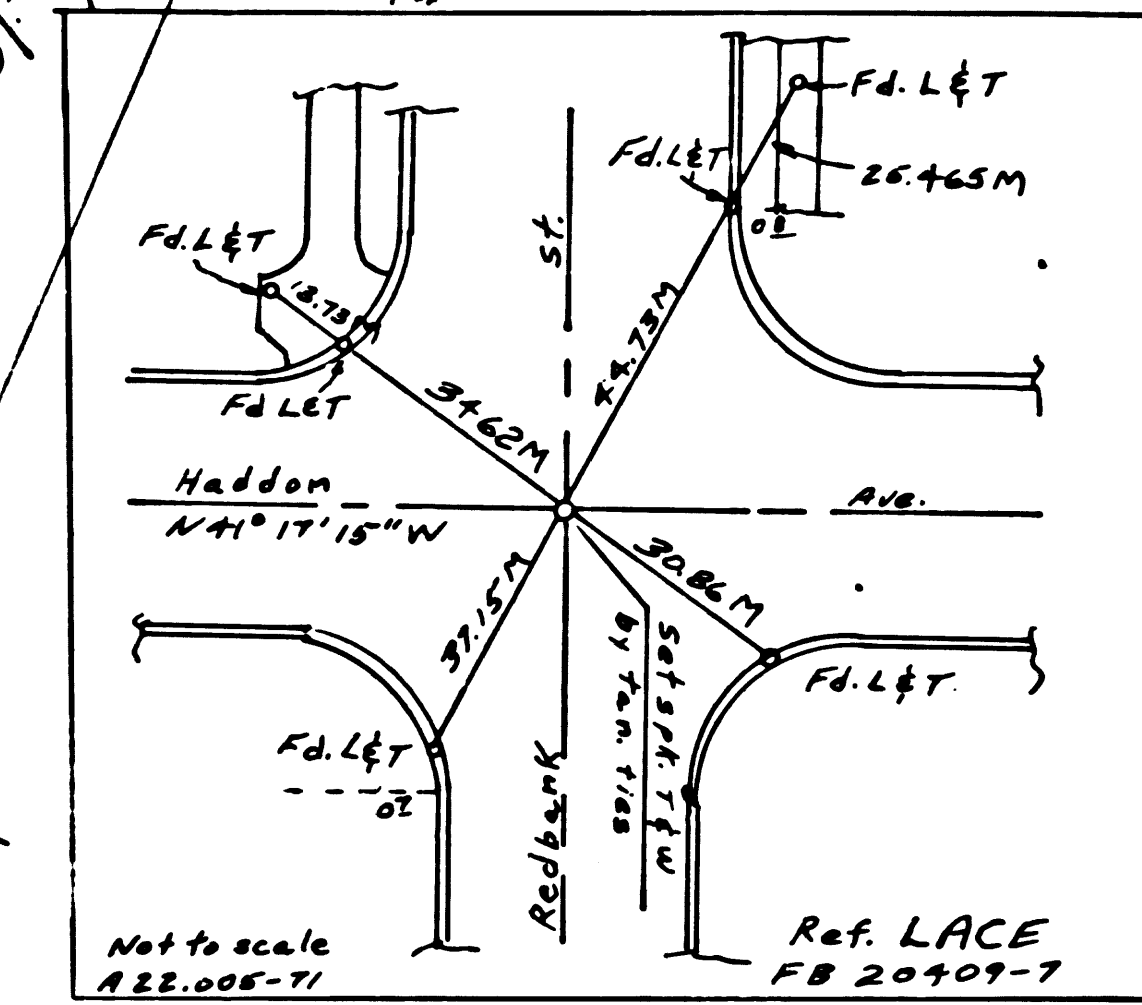
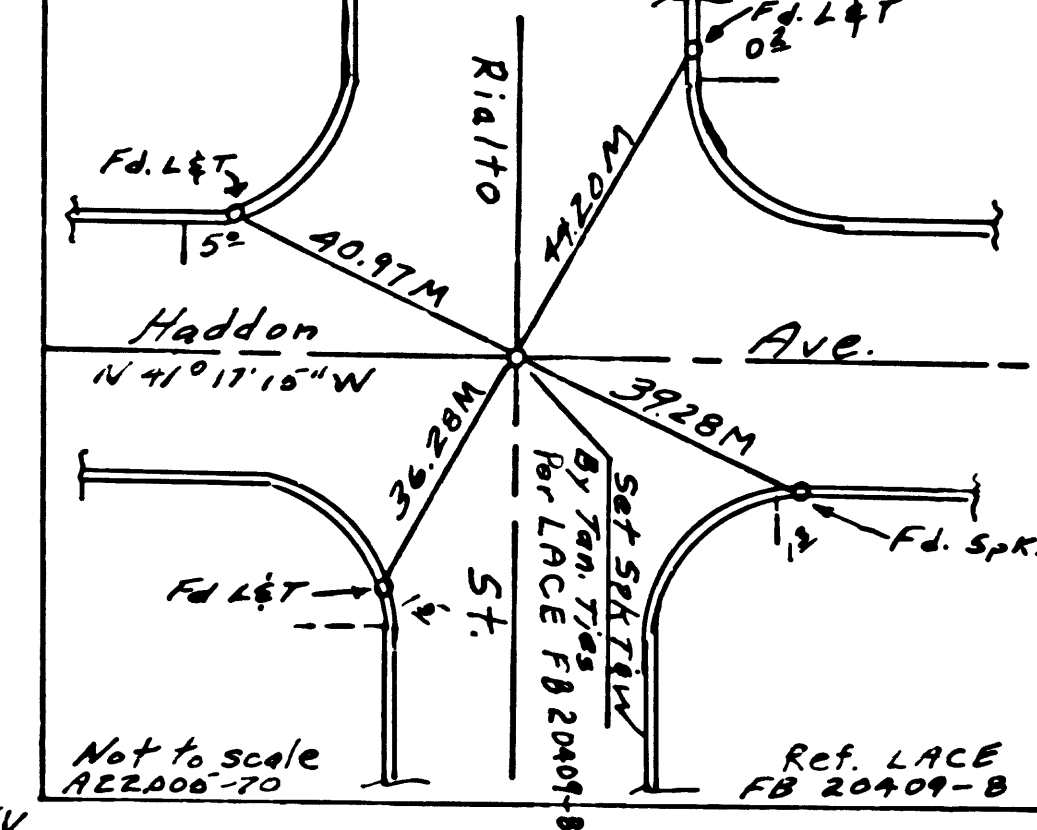


POST	COUNTY	ROUTE	POST MILES - TOTAL PROJECT	SHEET NO.	TOTAL SHEETS
7	LA	5	35.09-37.41	1	9

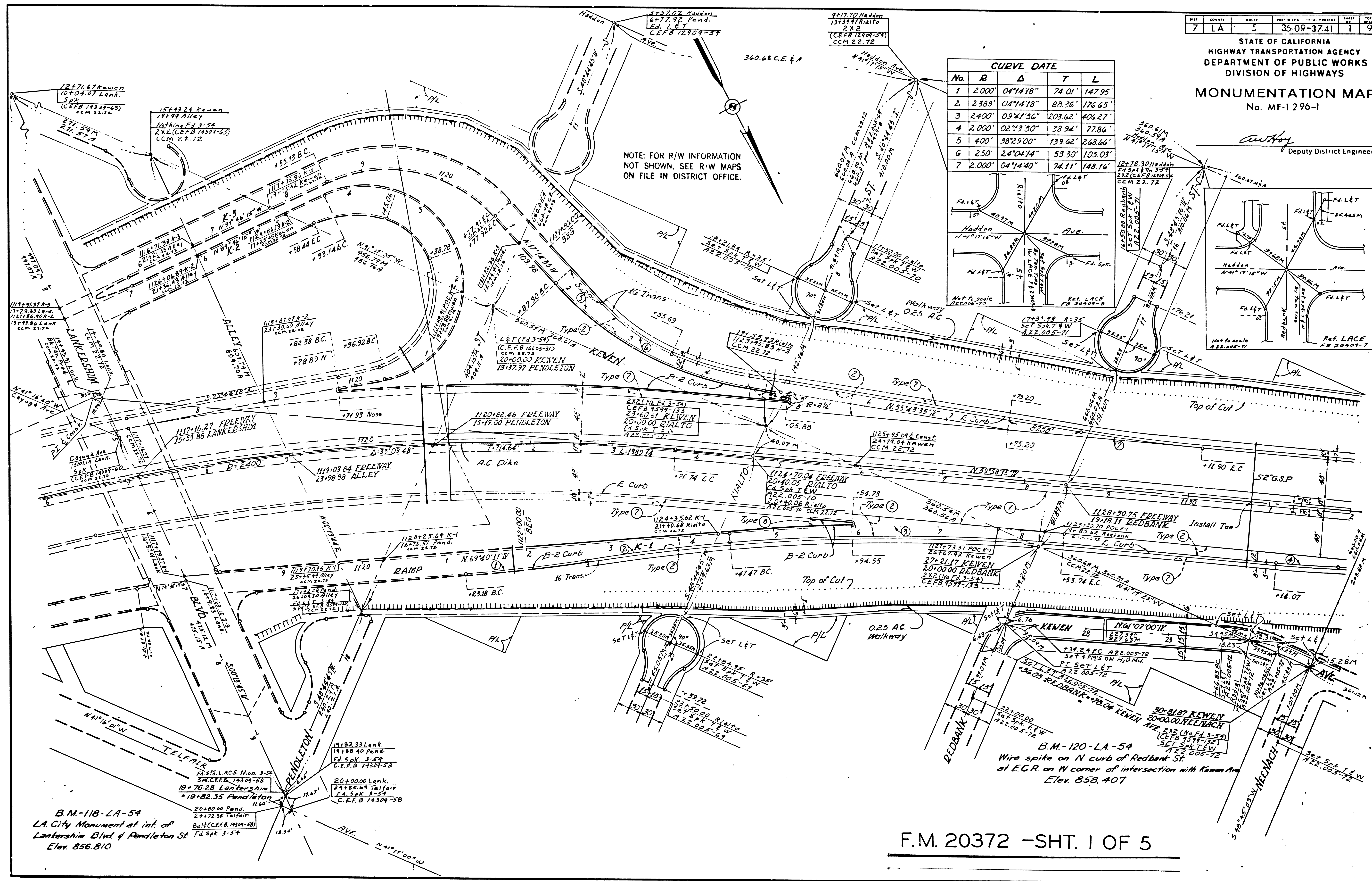
STATE OF CALIFORNIA
HIGHWAY TRANSPORTATION AGENCY
DEPARTMENT OF PUBLIC WORKS
DIVISION OF HIGHWAYS
MONUMENTATION MAP
No. MF-1296-1

Autry
Deputy District Engineer

CURVE DATA					
No.	R	Δ	T	L	
1	2,000'	04°41'18"	74.01'	147.95'	
2	2,388'	04°41'18"	88.36'	176.65'	
3	2,400'	09°41'56"	209.62'	406.27'	
4	2,000'	02°43'50"	39.94'	77.86'	
5	400'	38°29'00"	139.62'	268.66'	
6	250'	24°04'14"	53.30'	105.03'	
7	2,000'	04°14'40"	74.11'	148.16'	



NOTE: FOR R/W INFORMATION NOT SHOWN, SEE R/W MAPS ON FILE IN DISTRICT OFFICE.



B.M.-118-LA-54
LA City Monument at int. of
Lantershim Blvd & Pendleton St
Elev. 856.810

F.M. 20372 -SHT. 1 OF 5

135-7

DIST.	COUNTY	ROUTE	POST MILES - TOTAL PROJECT	SHEET NO.	TOTAL SHEETS
7	LA	5	35.79-37.4	2	9

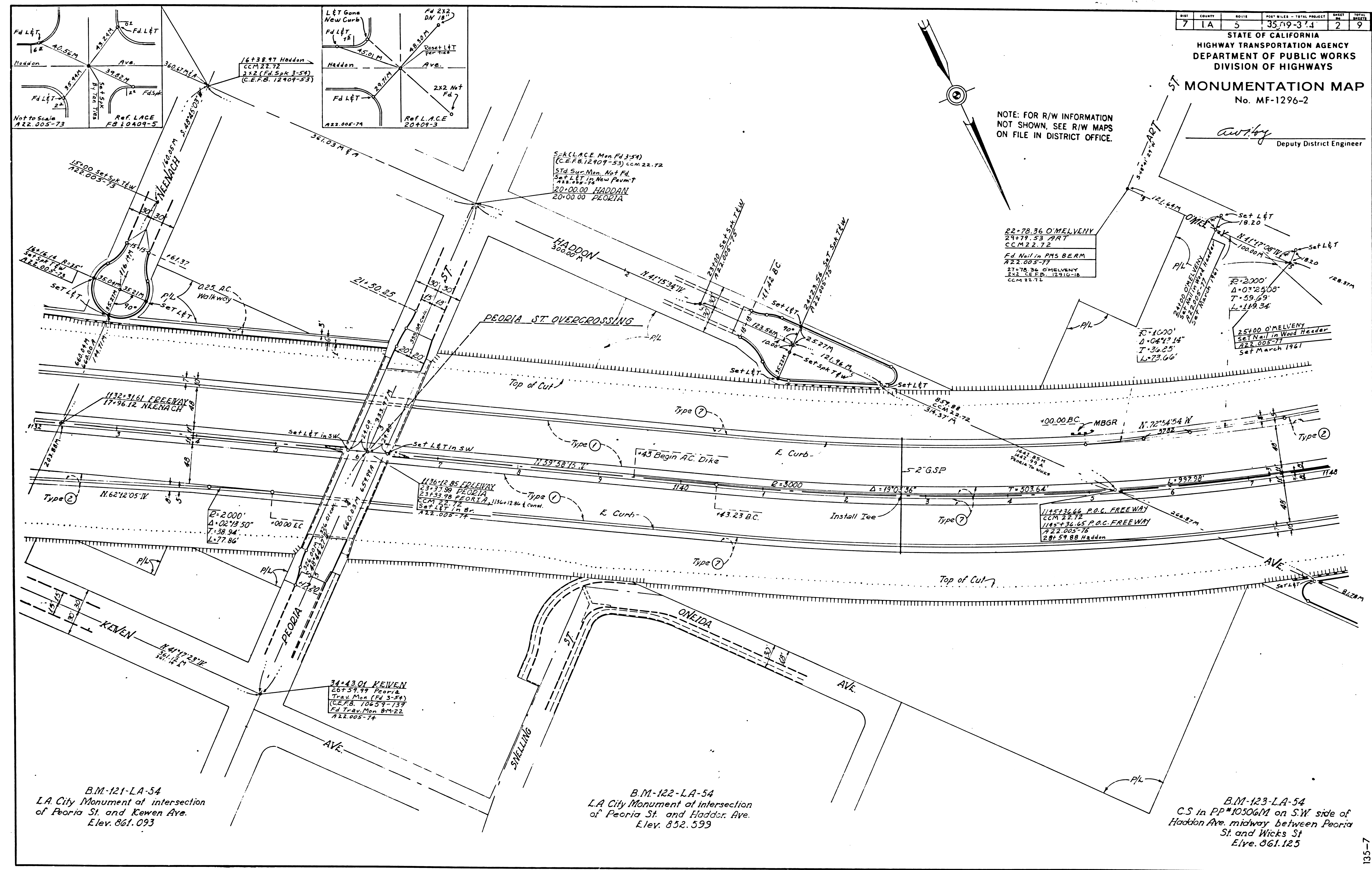
STATE OF CALIFORNIA
HIGHWAY TRANSPORTATION AGENCY
DEPARTMENT OF PUBLIC WORKS
DIVISION OF HIGHWAYS

MONUMENTATION MAP

No. MF-1296-2

Anthony
Deputy District Engineer

NOTE: FOR R/W INFORMATION
NOT SHOWN, SEE R/W MAPS
ON FILE IN DISTRICT OFFICE.



B.M.-121-LA-54
L.A. City Monument at intersection
of Peoria St. and Keweenaw Ave.
Elev. 861.093

B.M.-122-LA-54
L.A. City Monument at intersection
of Peoria St. and Haddon Ave.
Elev. 852.599

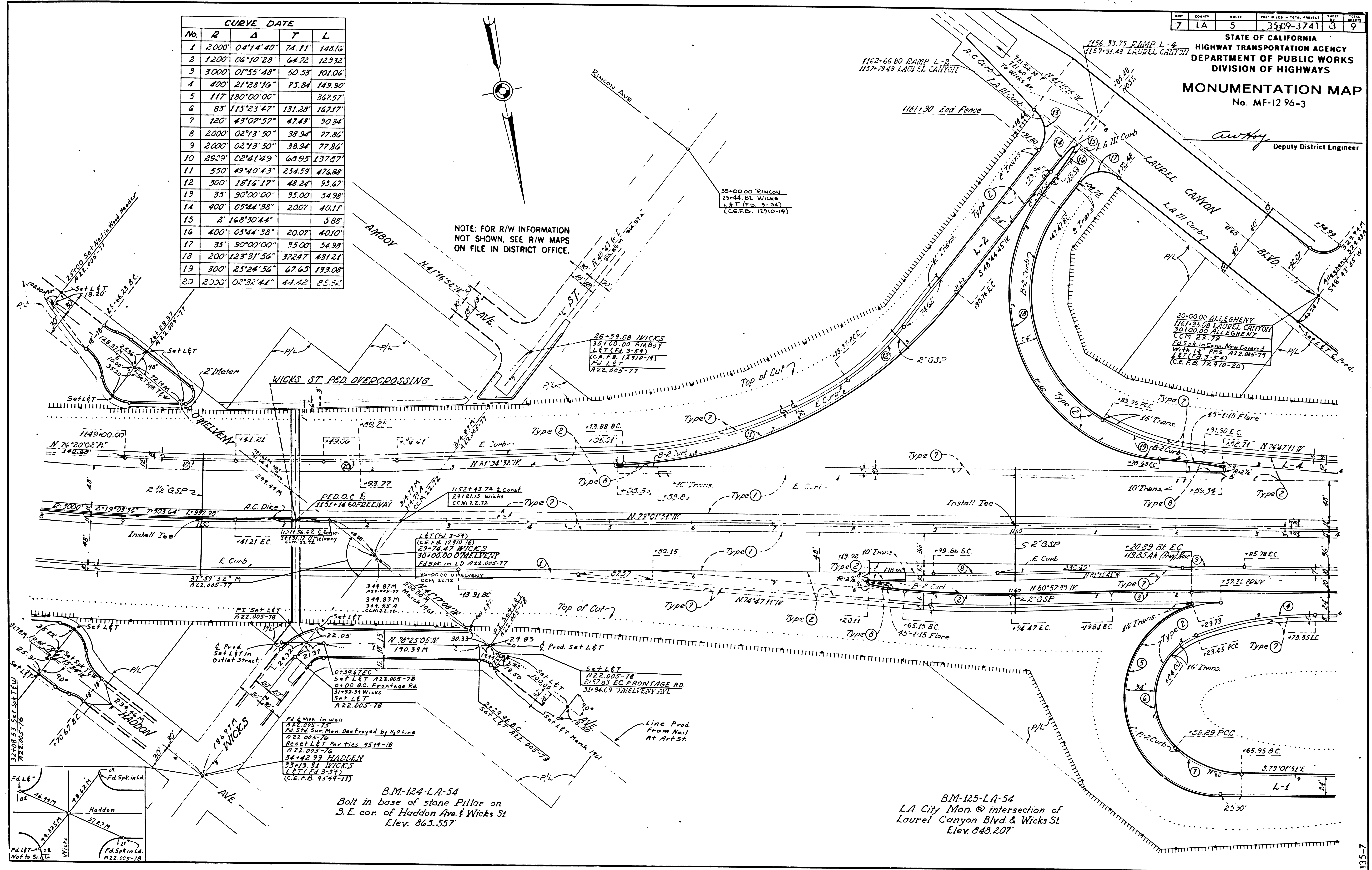
B.M.-123-LA-54
C.S. in PP#10506M on S.W. side of
Haddon Ave. midway between Peoria
St. and Wicks St
Elev. 861.125

STATE OF CALIFORNIA
HIGHWAY TRANSPORTATION AGENCY
DEPARTMENT OF PUBLIC WORKS
DIVISION OF HIGHWAYS
MONUMENTATION MAP
No. MF-12 96-3

Anthony
Deputy District Engineer

CURVE DATA				
No.	R	Δ	T	L
1	2000'	04°14'40"	74.11'	148.16'
2	1200'	06°10'28"	64.72'	123.32'
3	3000'	01°55'48"	50.53'	101.06'
4	400'	21°28'16"	75.84'	149.90'
5	117'	180°00'00"		367.57'
6	83'	115°23'47"	131.28'	167.17'
7	120'	43°07'57"	47.43'	90.34'
8	2000'	02°13'50"	38.94'	77.86'
9	2000'	02°13'50"	38.94'	77.86'
10	2929'	02°41'49"	68.95'	137.87'
11	550'	49°40'43"	254.59'	476.88'
12	300'	18°16'17"	48.24'	95.67'
13	35'	90°00'00"	35.00'	54.98'
14	400'	05°44'38"	20.07'	40.10'
15	2'	168°30'44"		5.88'
16	400'	05°44'38"	20.07'	40.10'
17	35'	90°00'00"	35.00'	54.98'
18	200'	123°31'56"	372.47'	431.21'
19	300'	25°24'56"	67.65'	133.08'
20	2000'	02°32'41"	44.42'	88.84'

NOTE: FOR R/W INFORMATION
NOT SHOWN. SEE R/W MAPS
ON FILE IN DISTRICT OFFICE.



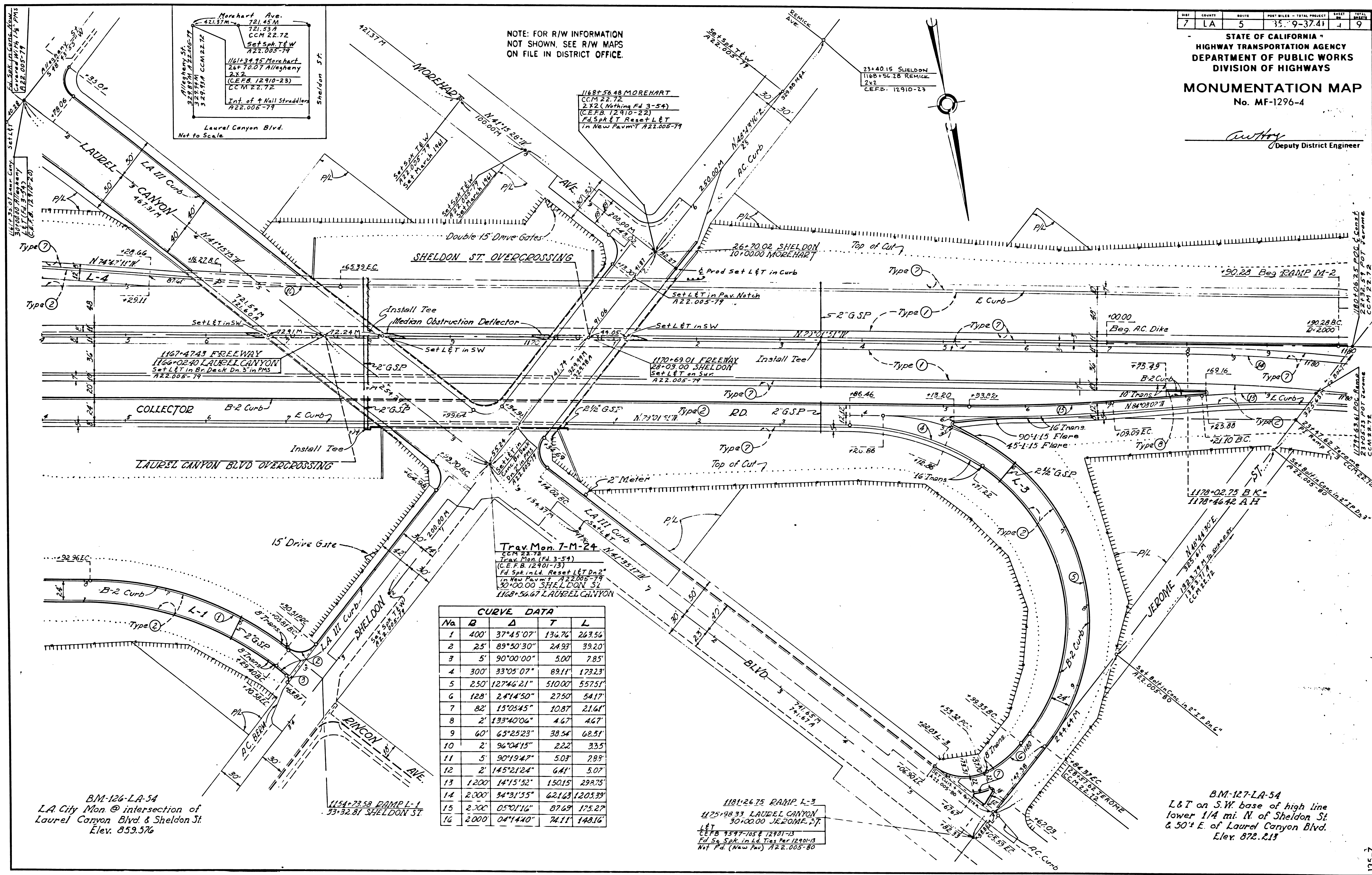
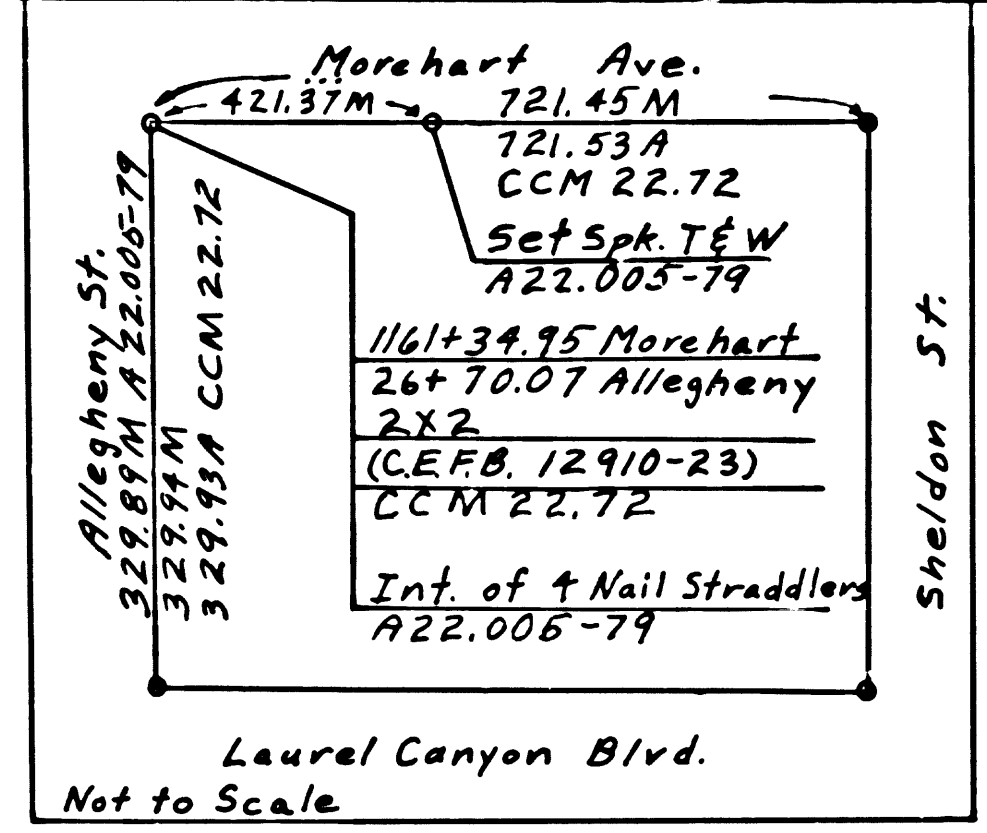
B.M.-124-LA-54
Bolt in base of stone Pillar on
S.E. cor. of Haddon Ave. & Wicks St.
Elev. 863.557

B.M.-125-LA-54
L.A. City Mon. @ intersection of
Laurel Canyon Blvd & Wicks St.
Elev. 848.207

135-7

Anthony
Deputy District Engineer

NOTE: FOR R/W INFORMATION
NOT SHOWN, SEE R/W MAPS
ON FILE IN DISTRICT OFFICE.



CURVE DATA

No	R	Δ	T	L
1	400'	37°45'07"	134.76	267.56
2	25'	89°50'30"	2.93	39.20
3	5'	90°00'00"	5.00	7.85
4	300'	33°05'07"	89.11	173.23
5	250'	127°46'21"	510.00	557.51
6	128'	24°4'50"	27.50	54.17
7	82'	15°03'45"	10.87	21.61
8	2'	133°40'06"	4.67	4.67
9	60'	65°25'23"	38.54	68.51
10	2'	96°04'15"	2.22	33.5
11	5'	90°19'47"	5.03	7.89
12	2'	145°21'24"	6.41	5.07
13	1200'	14°15'52"	150.15	299.75
14	2000'	34°31'55"	621.63	1203.39
15	200'	05°01'16"	87.69	175.27
16	2000'	04°44'40"	74.11	148.16

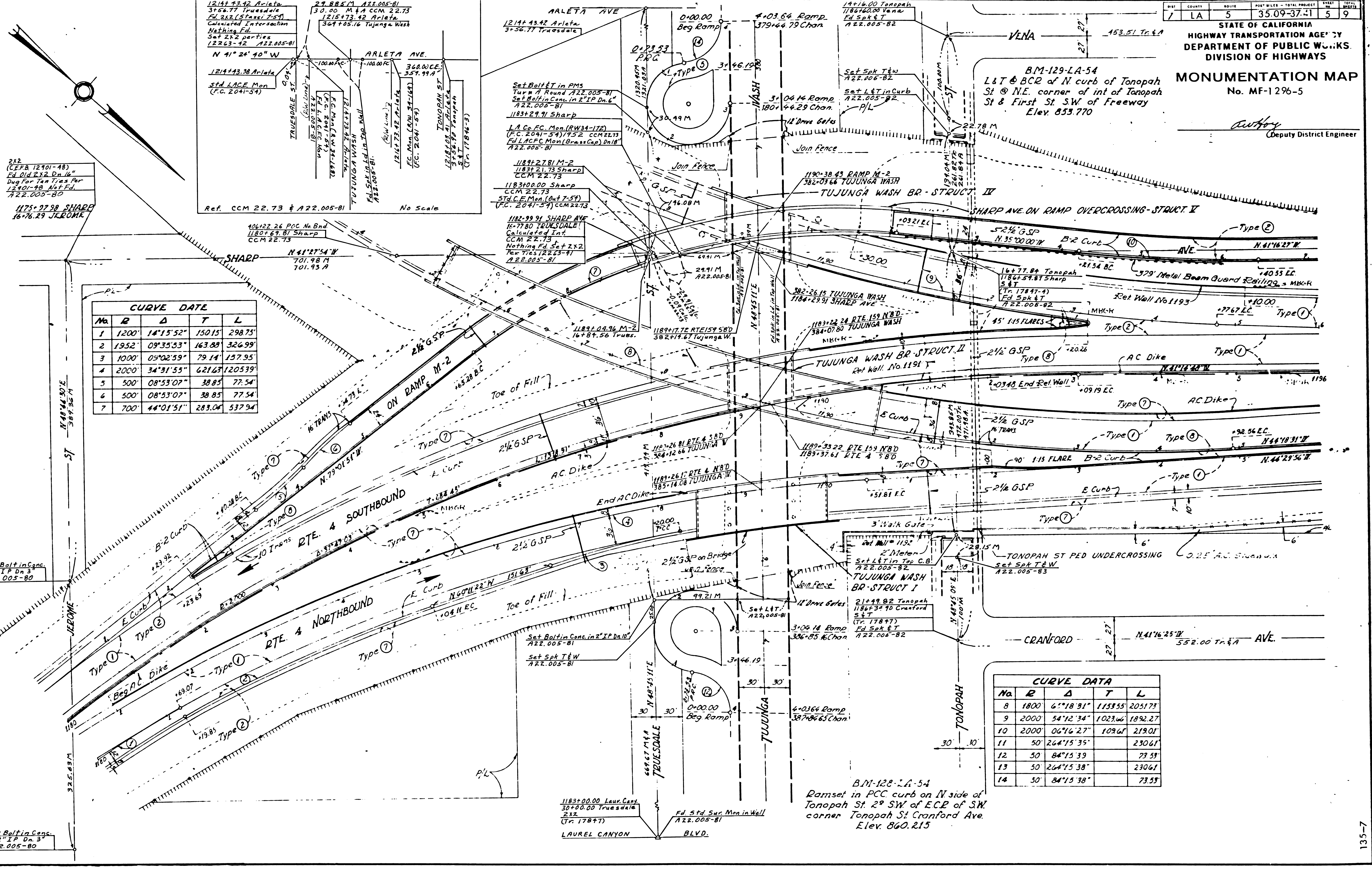
BM-126-LA-54
L.A. City Mon @ intersection of
Laurel Canyon Blvd & Sheldon St.
Elev. 859.576

1154+73.58 RAMP L-1
35+32.81 SHELDON ST.

1181+26.75 RAMP L-3
1125+98.33 LAUREL CANYON
30+00.00 JEZOME BLVD
L&T
CEFB 1397-105 & 12901-13
Fd Spk. in Ld. Ties Per 12901-13
Not Pd. (New Pav) A22.005-80

BM-127-LA-54
L&T on S.W. base of high line
lower 1/4 mi. N. of Sheldon St.
& 50' E. of Laurel Canyon Blvd.
Elev. 872.213

Anthony
 Deputy District Engineer



CURVE DATA

No	R	Δ	T	L
1	1200	14°15'52"	150.15	298.75
2	1952	09°35'53"	163.89	326.99
3	1000	05°02'59"	79.14	157.95
4	2000	34°31'55"	621.63	1205.39
5	500	08°53'07"	38.85	77.54
6	500	08°53'07"	38.85	77.54
7	700	44°01'51"	283.04	537.94

CURVE DATA

No	R	Δ	T	L
8	1800	6°18'31"	113.55	2051.73
9	2000	54°12'34"	1023.66	1892.27
10	2000	06°16'27"	103.61	219.01
11	50	26°15'35"		230.61
12	50	84°15'39"		73.53
13	50	26°15'38"		230.61
14	50	84°15'38"		73.53

B.M. 128-LA-54
 Ramset in PCC curb on N side of
 Tonopah St. 29 SW of E.C. of SW
 corner Tonopah St Cranford Ave.
 Elev. 860.215