

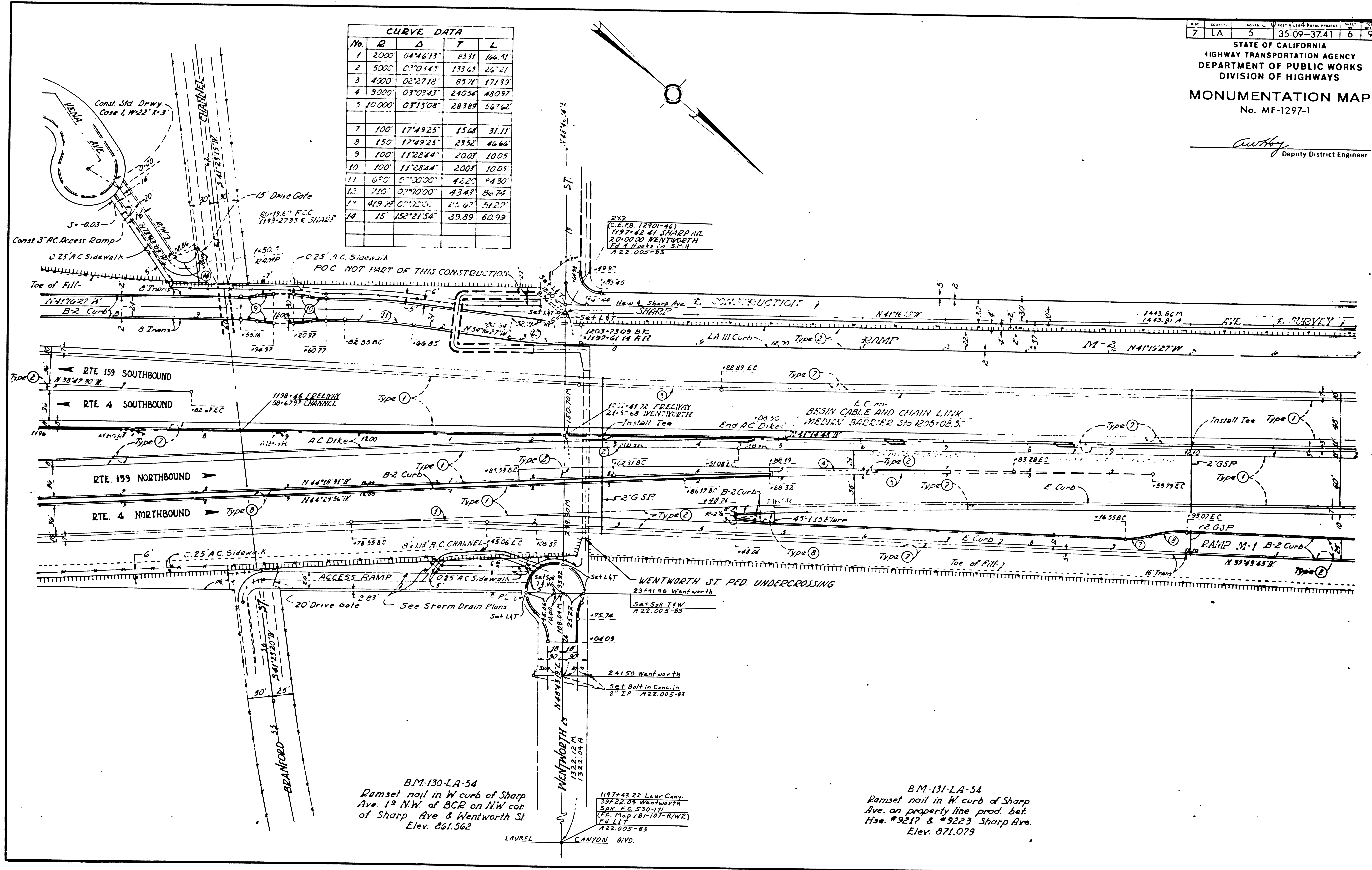
7	LA	5	35.09-37.41	6	9
---	----	---	-------------	---	---

STATE OF CALIFORNIA  
HIGHWAY TRANSPORTATION AGENCY  
DEPARTMENT OF PUBLIC WORKS  
DIVISION OF HIGHWAYS

**MONUMENTATION MAP**  
No. MF-1297-1

*Anthony*  
Deputy District Engineer

CURVE DATA					
No.	R	D	T	L	
1	2000	04°46'17"	8331	166.51	
2	5000	0°03'43"	133.69	26°21'	
3	4000	02°27'18"	85.71	171.39	
4	9000	03°03'43"	240.56	480.97	
5	10000	03°15'08"	283.89	567.62	
7	100	17°49'25"	15.68	31.11	
8	150	17°49'25"	23.52	46.66	
9	100	11°28'44"	20.03	10.05	
10	100	11°28'44"	20.03	10.05	
11	650	0°30'00"	42.20	84.30	
12	710	07°00'00"	43.43	86.74	
13	419.04	0°25'00"	83.67	512.7	
14	15	152°21'54"	39.89	60.99	



B.M. 130-LA-54  
Ramset nail in W. curb of Sharp  
Ave. 1<sup>st</sup> N.W. of BCR on NW cor.  
of Sharp Ave & Wentworth St.  
Elev. 861.562

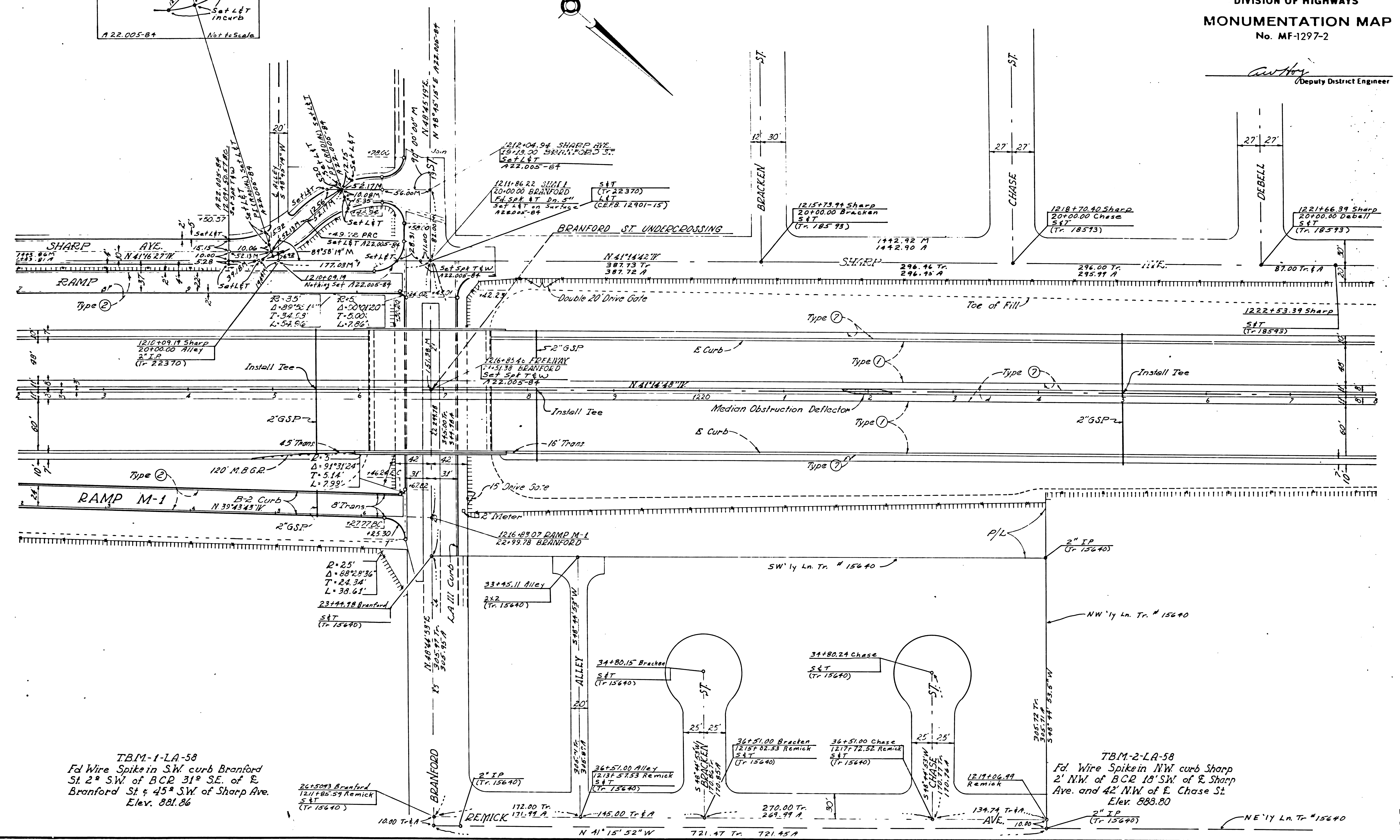
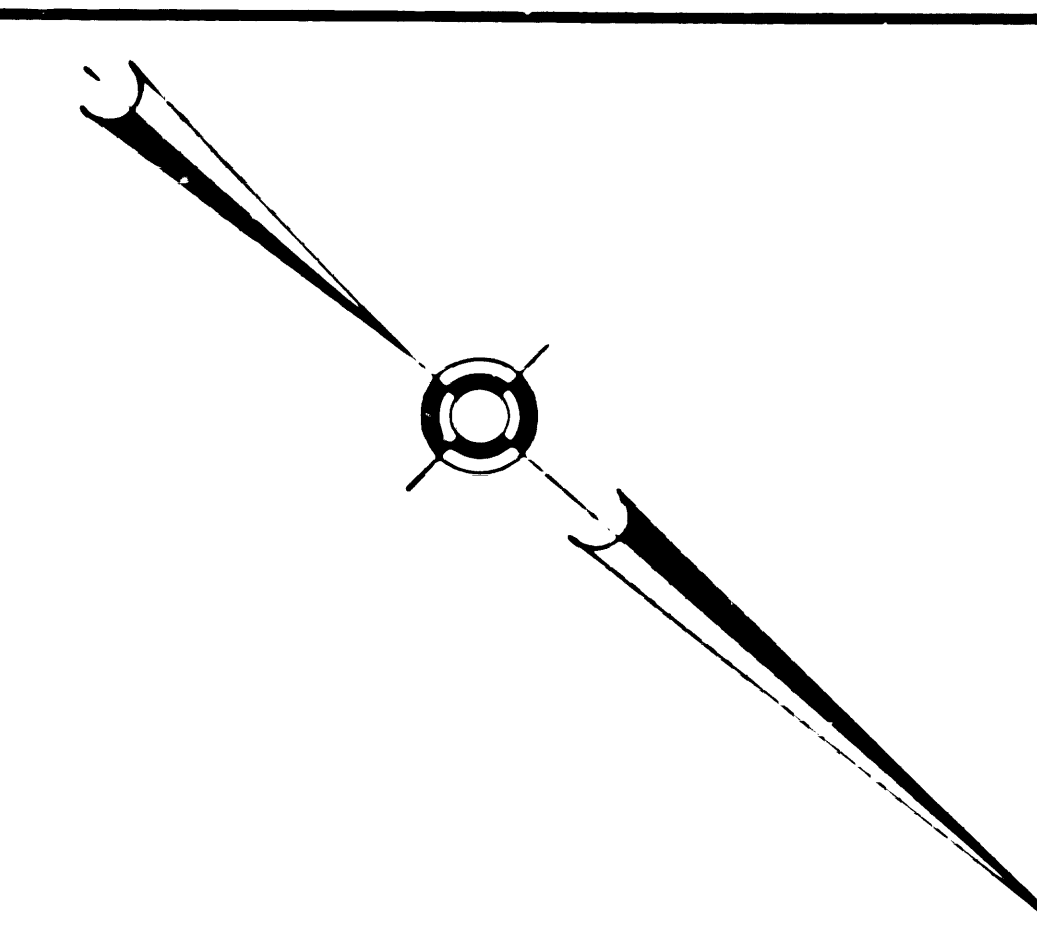
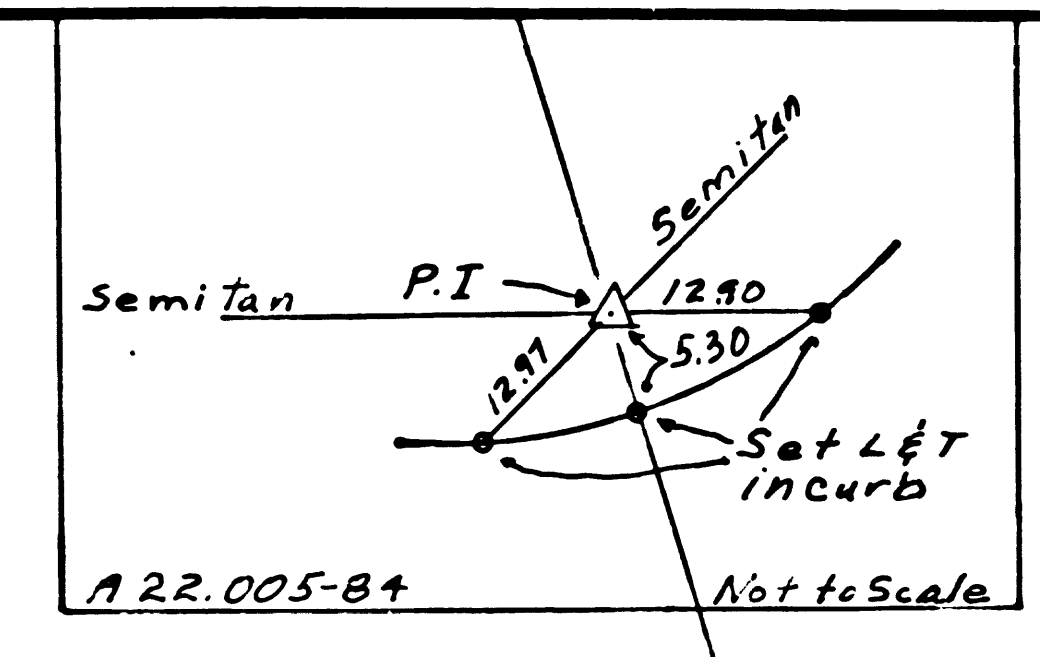
1197+43.22 Laur. Canyon  
337.22.04 Wentworth  
Spk. F.C. 530-171  
(P.C. Map 181-107-RW2)  
Fd. L&T  
A22.005-83

B.M. 131-LA-54  
Ramset nail in W. curb of Sharp  
Ave. on property line prod. bet.  
Hse. #9217 & #9223 Sharp Ave.  
Elev. 871.079

SHEET NO.	COUNTY	SECTION	POST MILES - TOTAL PROJECT	SHEET NO.	TOTAL SHEETS
7	LA	5	35.9-37.7	7	9

STATE OF CALIFORNIA  
HIGHWAY TRANSPORTATION AGENCY  
DEPARTMENT OF PUBLIC WORKS  
DIVISION OF HIGHWAYS  
**MONUMENTATION MAP**  
No. MF-1297-2

*Anthony*  
Deputy District Engineer



TBM-1-LA-58  
Fd Wire Spike in S.W. curb Branford St. 2' SW of BCR 31' SE. of E Branford St & 45' SW of Sharp Ave. Elev. 881.86

TBM-2-LA-58  
Fd Wire Spike in NW curb Sharp Ave. 2' NW of BCR 18' SW of E Sharp Ave. and 42' NW of E Chase St. Elev. 883.80

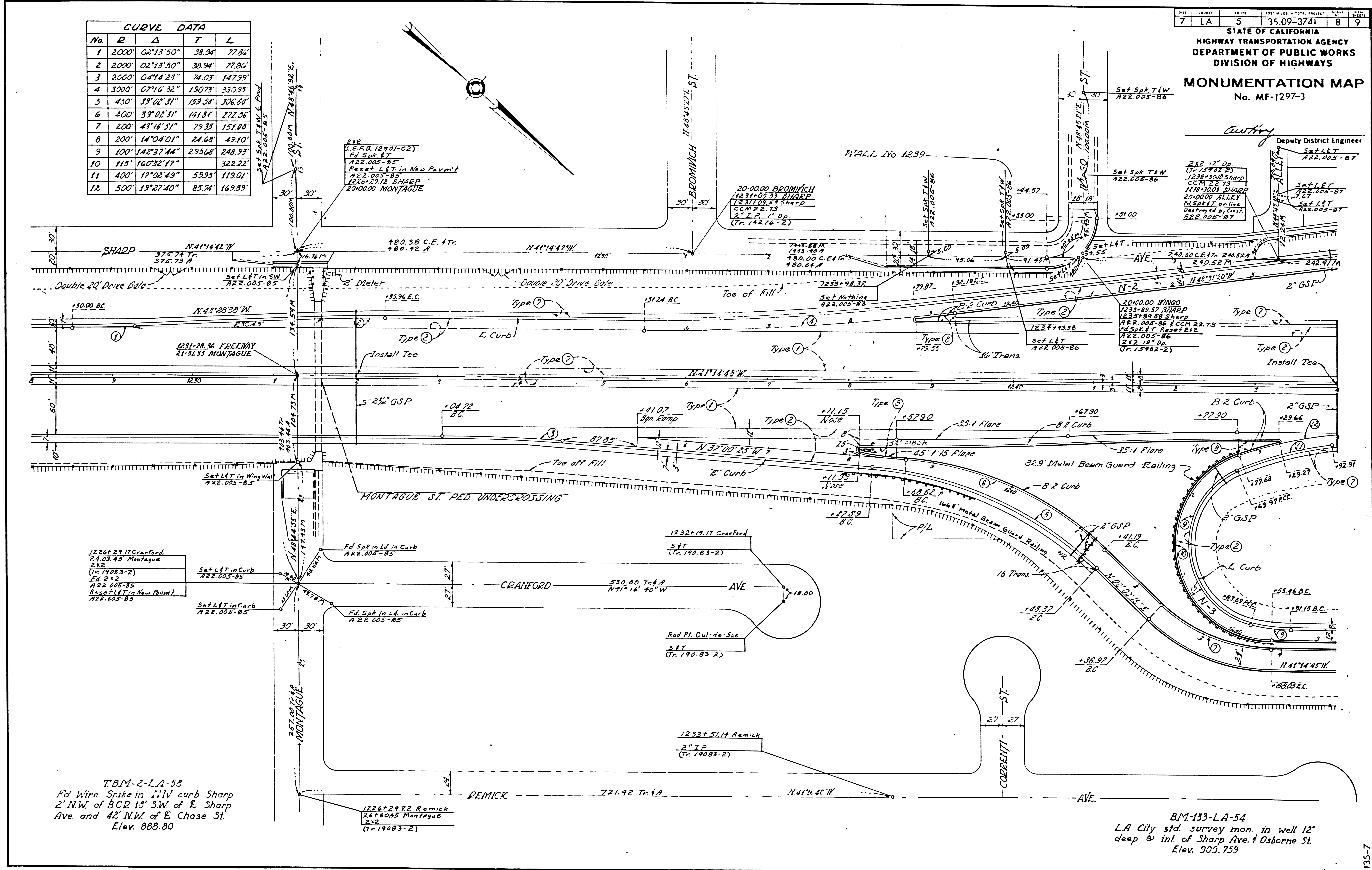
135-7

CURVE DATA				
No.	R	Δ	T	L
1	2000	02°13'50"	38.94	77.86'
2	2000	02°13'50"	38.94	77.86'
3	2000	04°14'23"	74.03	147.99'
4	3000	07°16'32"	190.73	380.95'
5	450	39°02'31"	159.54	306.64'
6	400	39°02'31"	141.81	272.36'
7	200	43°16'31"	79.33	151.08'
8	200	14°04'01"	24.63	49.10'
9	100	142°37'44"	255.68	248.93'
10	115	160°32'17"	59.95	119.01'
11	400	17°02'49"	59.95	119.01'
12	500	19°27'40"	85.74	169.93'

7	LA	5	35.09-37.41	8	9
---	----	---	-------------	---	---

STATE OF CALIFORNIA  
HIGHWAY TRANSPORTATION AGENCY  
DEPARTMENT OF PUBLIC WORKS  
DIVISION OF HIGHWAYS  
**MONUMENTATION MAP**  
No. MF-1297-3

*C. H. H. H.*  
Deputy District Engineer  
Set L&T  
A22.005-B7



TBM-2-LA-58  
Fd Wire Spike in 11W curb Sharp  
2' N.W. of BCR 10' S.W. of E. Sharp  
Ave. and 42' N.W. of E. Chase St.  
Elev. 888.80

BM-133-LA-54  
LA City std. survey mon. in well 12'  
deep @ int. of Sharp Ave. & Osborne St.  
Elev. 909.759

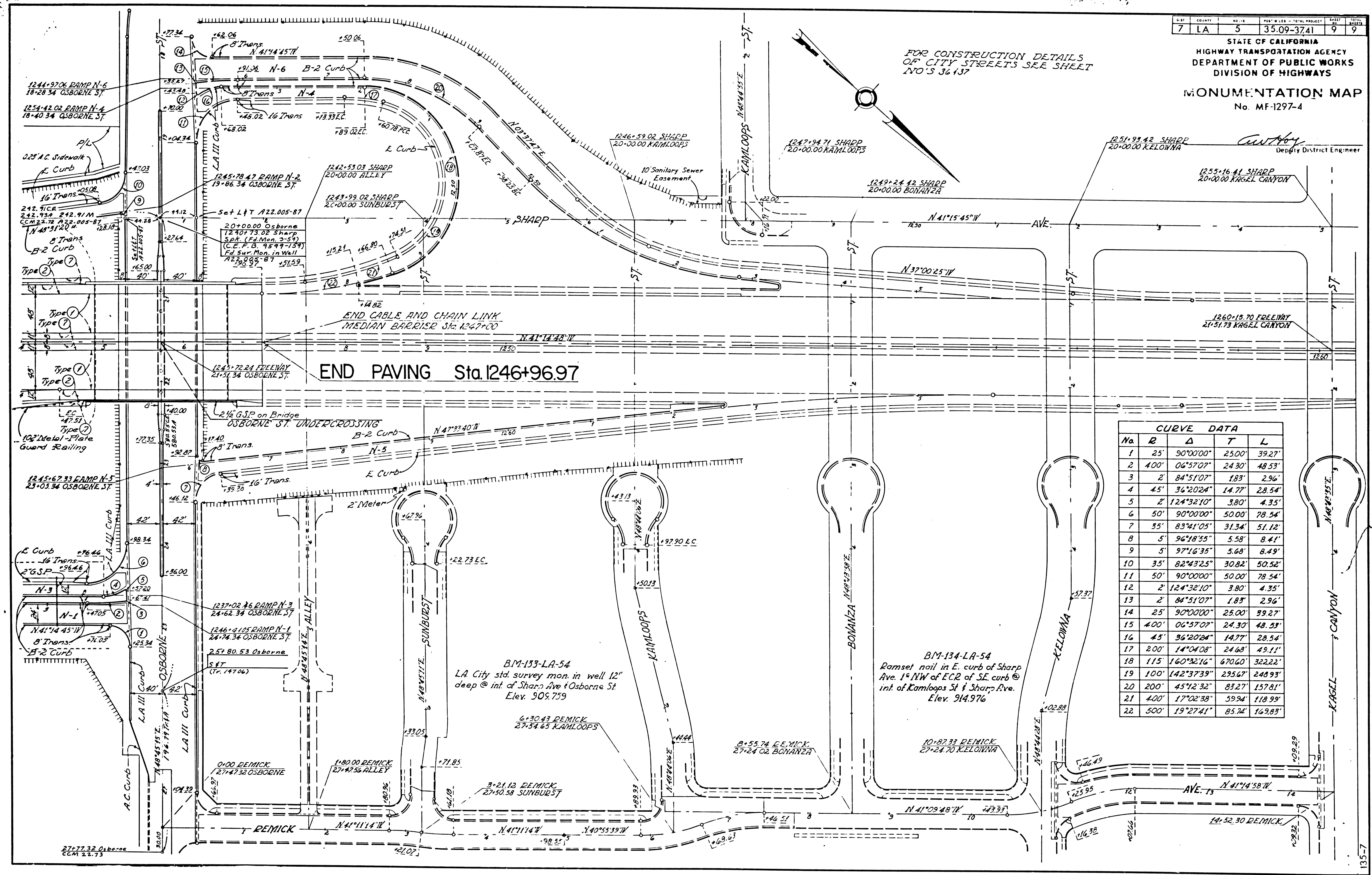
SHEET	COUNTY	SECTION	POST MILES - TOTAL PROJECT	SHEET TOTAL
7	LA	5	35.09-37.41	9

STATE OF CALIFORNIA  
HIGHWAY TRANSPORTATION AGENCY  
DEPARTMENT OF PUBLIC WORKS  
DIVISION OF HIGHWAYS

**MONUMENTATION MAP**  
No. MF-1297-4

*C. W. H. H. H.*  
Deputy District Engineer

FOR CONSTRUCTION DETAILS  
OF CITY STREETS SEE SHEET  
NO'S 36 137



**CURVE DATA**

No.	R	Δ	T	L
1	25'	90°00'00"	25.00'	39.27'
2	400'	06°57'07"	24.30'	48.53'
3	2'	84°51'07"	1.83'	2.96'
4	45'	36°20'24"	14.77'	28.54'
5	2'	124°32'10"	3.80'	4.35'
6	50'	90°00'00"	50.00'	78.54'
7	35'	83°41'05"	31.34'	51.12'
8	5'	96°18'55"	5.58'	8.41'
9	5'	97°16'35"	5.68'	8.49'
10	35'	82°43'25"	30.82'	50.52'
11	50'	90°00'00"	50.00'	78.54'
12	2'	124°32'10"	3.80'	4.35'
13	2'	84°51'07"	1.83'	2.96'
14	25'	90°00'00"	25.00'	39.27'
15	400'	06°57'07"	24.30'	48.53'
16	45'	36°20'24"	14.77'	28.54'
17	200'	14°04'08"	24.68'	49.11'
18	115'	160°32'16"	670.60'	322.22'
19	100'	142°37'39"	295.67'	248.93'
20	200'	45°42'32"	83.27'	157.81'
21	400'	17°02'58"	59.94'	118.99'
22	500'	19°27'41"	85.74'	169.83'

B.M. 133-LA-54  
L.A. City std. survey mon. in well 12"  
deep @ int. of Sharp Ave & Osborne St  
Elev. 509.759

B.M. 134-LA-54  
Ramset nail in E. curb of Sharp  
Ave. 1' NW of ECR of SE curb @  
int. of Kamloops St & Sharp Ave.  
Elev. 914.976