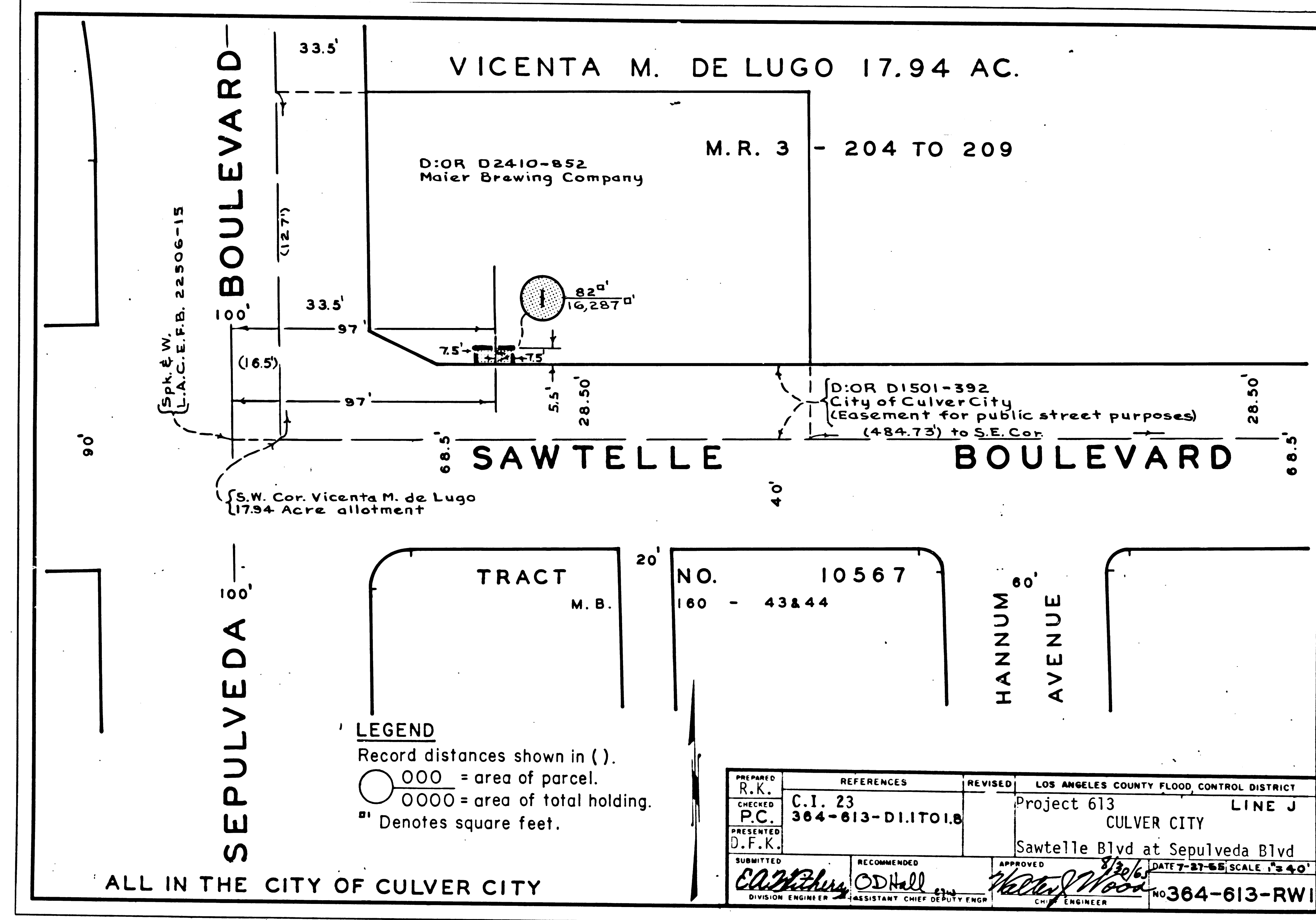
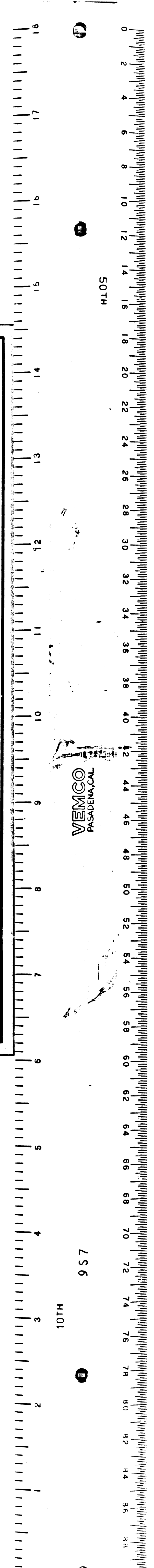


VEMCO
PASADENA, CALIF.



PREPARED R.K.	REFERENCES	REVISED	LOS ANGELES COUNTY FLOOD CONTROL DISTRICT
CHECKED P.C.	C.I. 23		Project 613 LINE J
PRESENTED D.F.K.	364-613-DI.I.T.O.I.B.		CULVER CITY
			Sawtelle Blvd at Sepulveda Blvd
SUBMITTED	RECOMMENDED	APPROVED	DATE 7-27-68 SCALE 1"=40'
<i>C. J. ...</i>	<i>O. D. ...</i>	<i>Walter Wood</i>	NO 364-613-RW1
DIVISION ENGINEER	ASSISTANT CHIEF OF DIVISION	CHIEF ENGINEER	

F.M. 20374



VEMCO
PASADENA, CALIF.