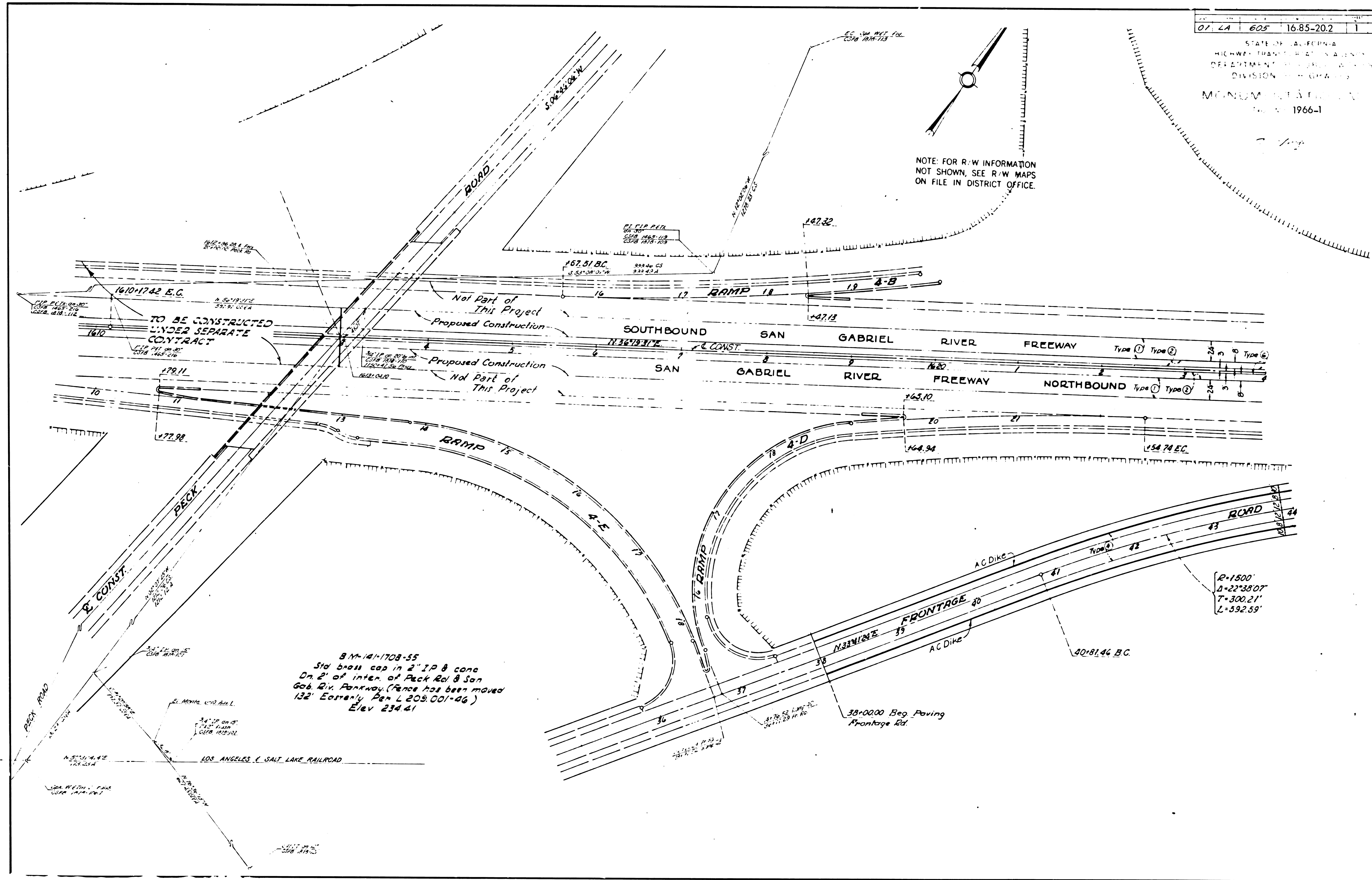


01	LA	605	16-85-202	1	19
----	----	-----	-----------	---	----

STATE OF CALIFORNIA
HIGHWAY TRANSPORTATION AGENCIES
DEPARTMENT OF PUBLIC WORKS
DIVISION OF HIGHWAYS
MONUMENTATION
1966-1

NOTE: FOR R/W INFORMATION
NOT SHOWN, SEE R/W MAPS
ON FILE IN DISTRICT OFFICE.

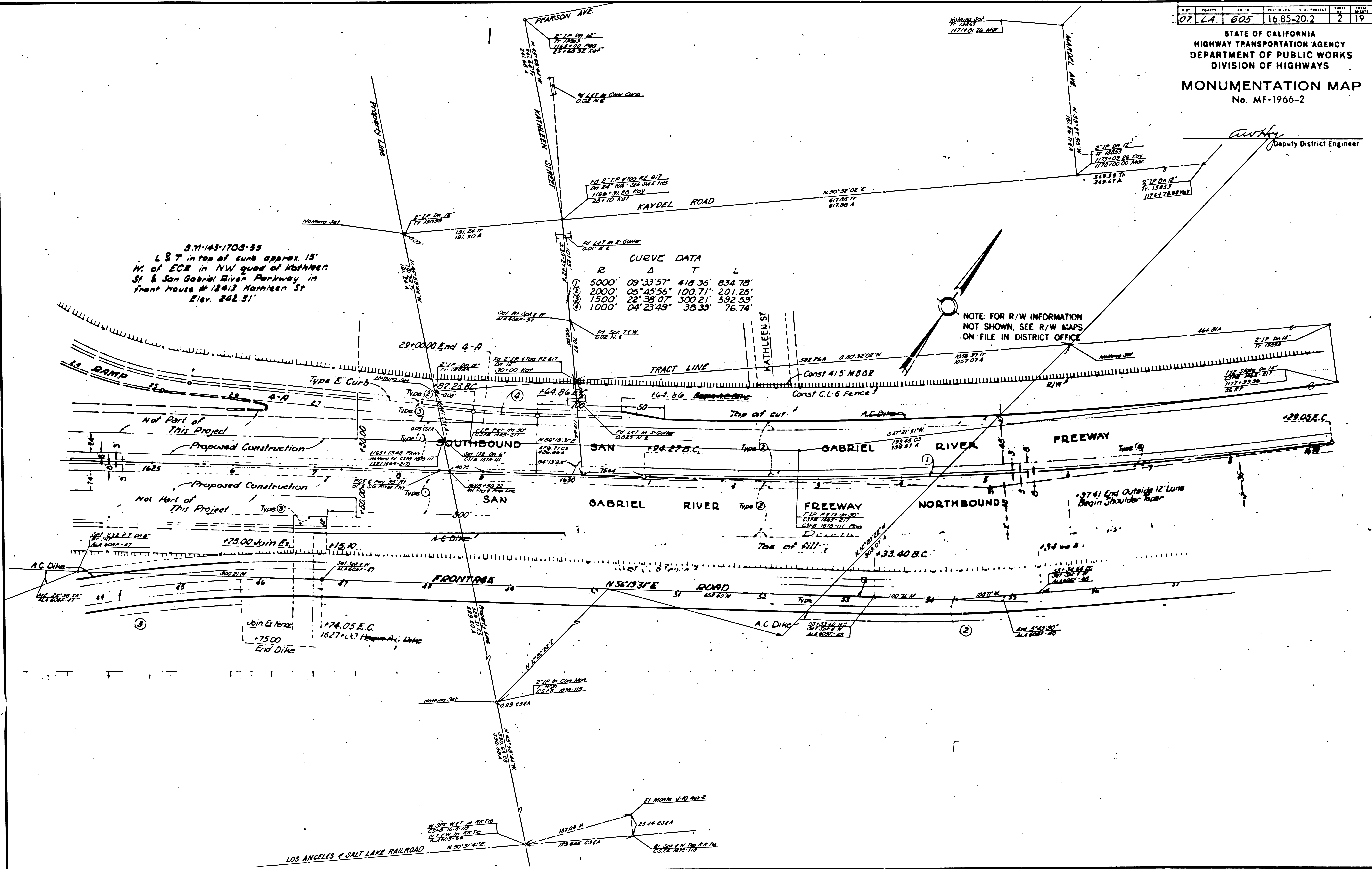


8 N 141-1708-55
Std brass cap in 2" IP 8 cone
On 2' of inter. of Peck Rd & San
Gab. Riv. Parkway (fence has been moved
132' East only Pen L 209,001-06)
Elev 234.41

DIST.	COUNTY	NO. 12	POST-MILES - TOTAL PROJECT	SHEET	TOTAL SHEETS
07	LA	605	16.85-20.2	2	19

STATE OF CALIFORNIA
HIGHWAY TRANSPORTATION AGENCY
DEPARTMENT OF PUBLIC WORKS
DIVISION OF HIGHWAYS
MONUMENTATION MAP
No. MF-1966-2

Anthony
Deputy District Engineer



S.M. 143-1708-55
L.S.T. in top of curb approx. 13'
W. of ECB in NW quad of Kathleen
St & San Gabriel River Parkway in
front House # 18413 Kathleen St
Elev. 242.31'

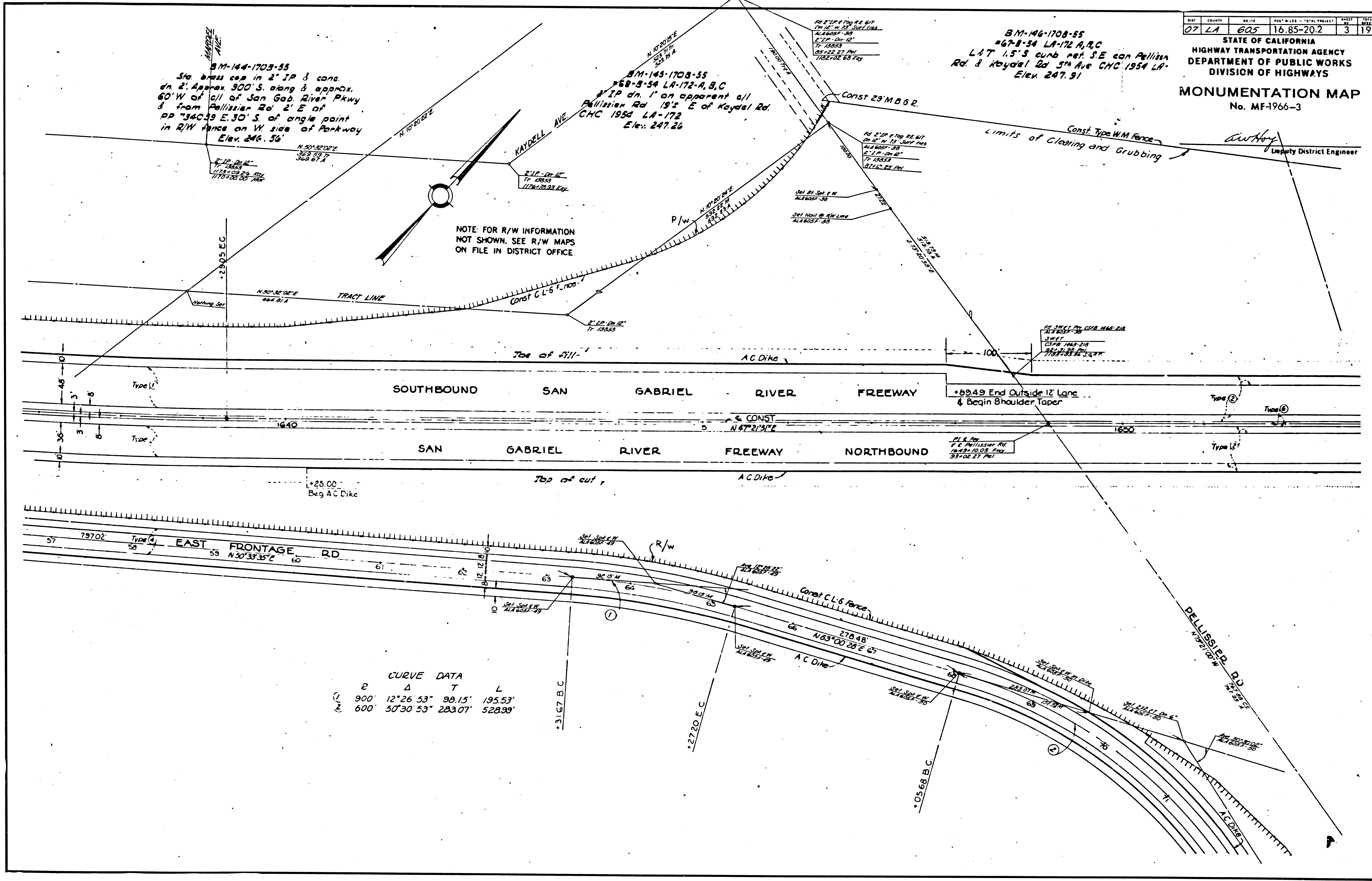
CURVE DATA

R	Δ	T	L
5000'	09°33'57"	418.36'	834.78'
2000'	05°45'56"	100.71'	201.26'
1500'	22°38'07"	300.21'	592.53'
1000'	04°23'49"	35.33'	76.74'

NOTE: FOR R/W INFORMATION
NOT SHOWN, SEE R/W MAPS
ON FILE IN DISTRICT OFFICE

SHEET	COUNTY	SECTION	POST MILES - TOTAL PROJECT	SHEET NO.	TOTAL SHEETS
07	LA	605	16.85-20.2	3	19

STATE OF CALIFORNIA
HIGHWAY TRANSPORTATION AGENCY
DEPARTMENT OF PUBLIC WORKS
DIVISION OF HIGHWAYS
MONUMENTATION MAP
No. MF-1966-3



BM-144-1703-55
Sta. brass cap in 2" IP & cone.
dn. 2' approx. 300' S. along & approx.
60' W. of c/l of San Gab. River Pkwy
& from Pellissier Rd. 2' E. of
PP 1340.59 E. 30' S. of angle point
in R/W fence on W. side of Parkway
Elev. 246.56'

BM-145-1708-55
+68-5-34 LA-172-A, B, C
IP dn. 1' on apparent c/l
Pellissier Rd. 19' E. of Kaydel Rd.
C.H.C. 1954 LA-172
Elev. 247.26

BM-146-1708-55
+67-8-54 LA-172 A, B, C
L & T 1.5' S. curb ret. S.E. con Pellissier
Rd. & Kaydel Rd. 5th Ave C.H.C. 1954 LA-
Elev. 247.91

NOTE: FOR R/W INFORMATION
NOT SHOWN. SEE R/W MAPS
ON FILE IN DISTRICT OFFICE

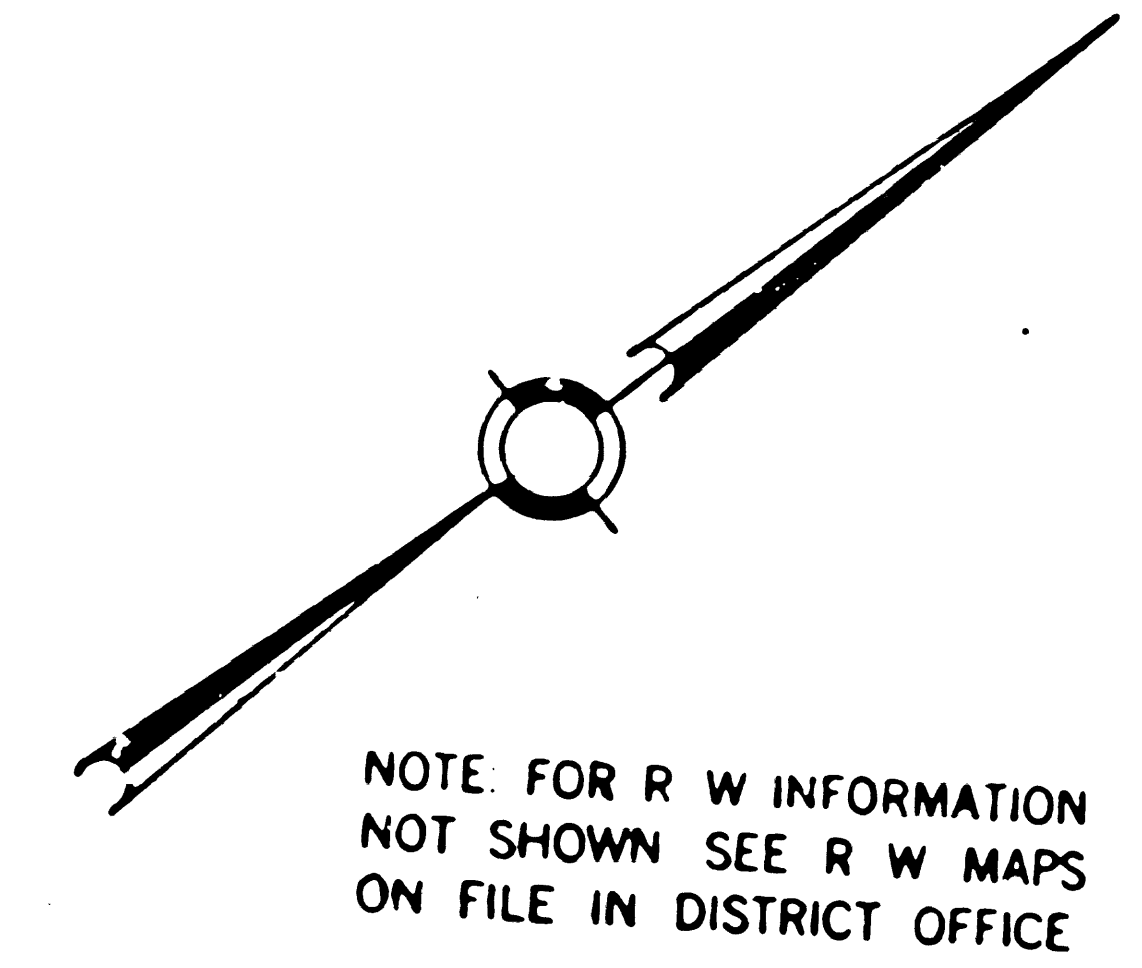
CURVE DATA

	B	A	T	L
1	900'	12°26'53"	98.15'	195.53'
2	600'	50°30'53"	283.07'	528.99'

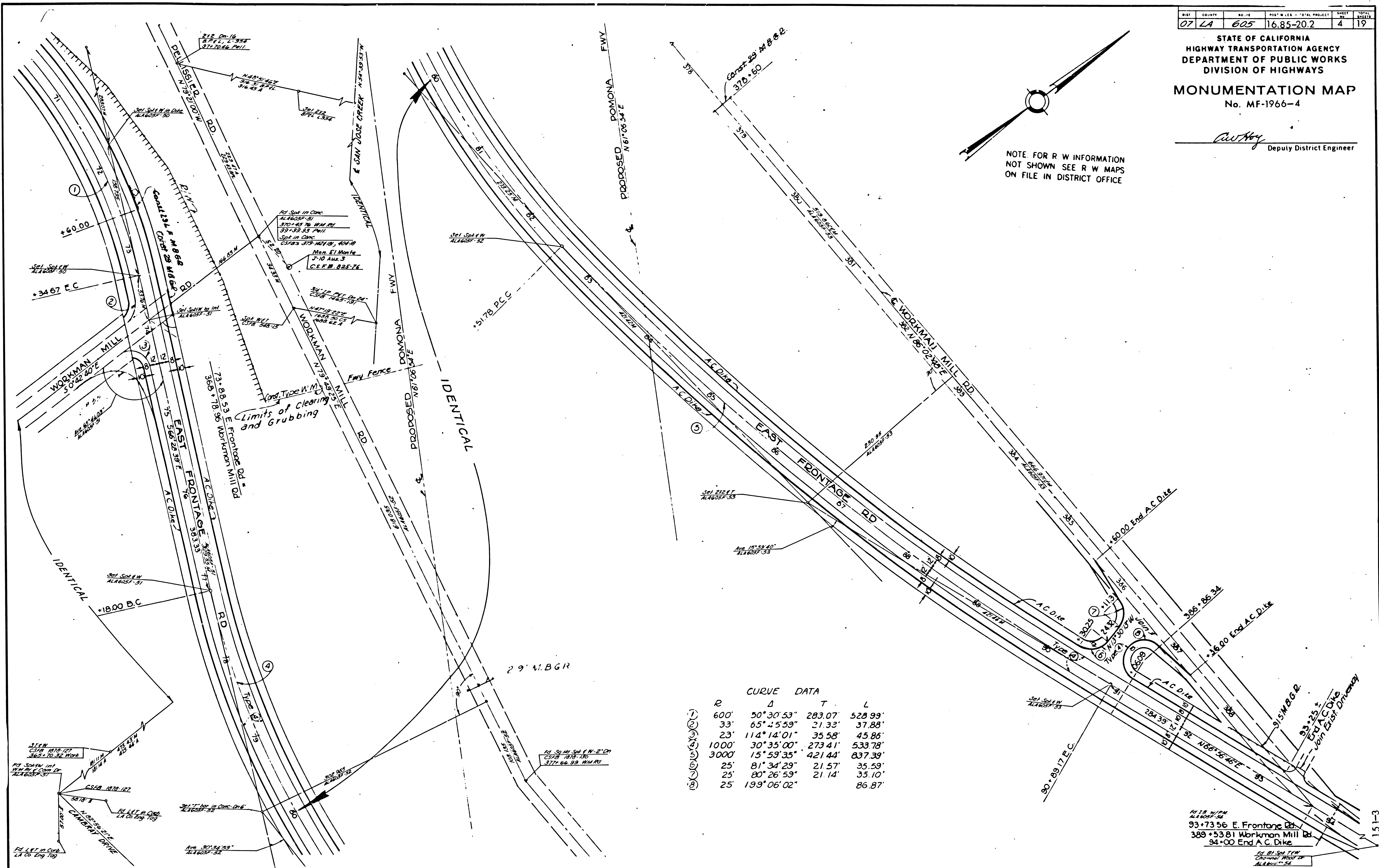
DIST	COUNTY	NO. 16	POST M. LEE - TOTAL PROJECT	SHEET	TOTAL
07	LA	605	16.85-20.2	4	19

STATE OF CALIFORNIA
HIGHWAY TRANSPORTATION AGENCY
DEPARTMENT OF PUBLIC WORKS
DIVISION OF HIGHWAYS
MONUMENTATION MAP
No. MF-1966-4

C. W. Hoy
Deputy District Engineer



NOTE FOR R W INFORMATION
NOT SHOWN SEE R W MAPS
ON FILE IN DISTRICT OFFICE



CURVE DATA

R	Δ	T	L
600'	50° 30' 53"	283.07'	528.99'
33'	65° 45' 59"	21.32'	37.88'
23'	114° 14' 01"	35.58'	45.86'
1000'	30° 35' 00"	273.41'	533.78'
3000'	15° 59' 35"	421.44'	837.39'
25'	81° 34' 29"	21.57'	35.59'
25'	80° 26' 59"	21.14'	35.10'
25'	199° 06' 02"		86.87'