



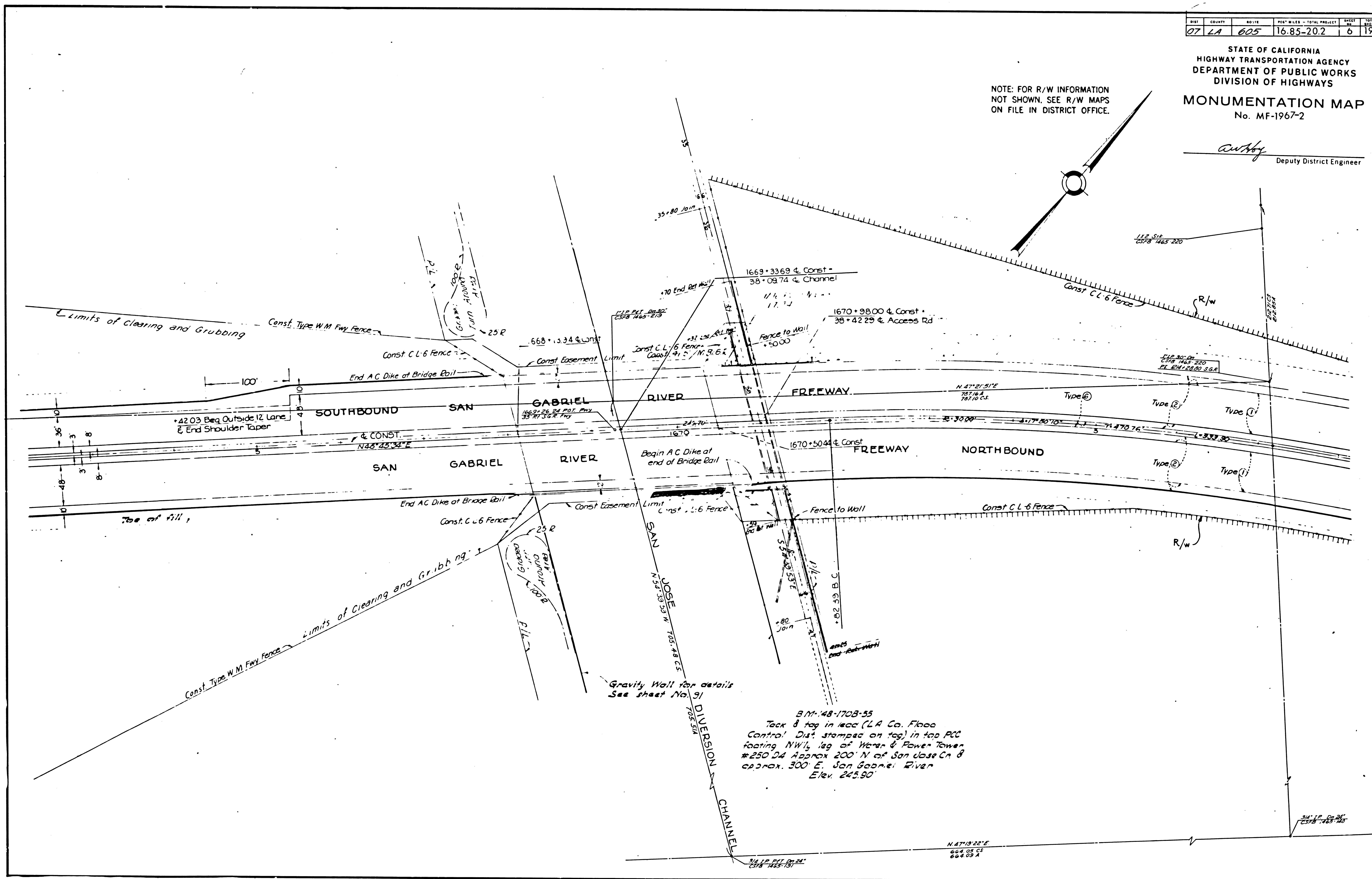
DIST.	COUNTY	ROUTE	POST MILES - TOTAL PROJECT	SHEET NO.	TOTAL SHEETS
07	LA	605	16.85-20.2	6	19

STATE OF CALIFORNIA  
HIGHWAY TRANSPORTATION AGENCY  
DEPARTMENT OF PUBLIC WORKS  
DIVISION OF HIGHWAYS

**MONUMENTATION MAP**  
No. MF-1967-2

*Anthony*  
Deputy District Engineer

NOTE: FOR R/W INFORMATION  
NOT SHOWN. SEE R/W MAPS  
ON FILE IN DISTRICT OFFICE.



DIST	COUNTY	ROUTE	POST MILES - TOTAL PROJECT	SHEET NO.	TOTAL SHEETS
07	LA	605	16.85-20.2	7	19

STATE OF CALIFORNIA  
HIGHWAY TRANSPORTATION AGENCY  
DEPARTMENT OF PUBLIC WORKS  
DIVISION OF HIGHWAYS

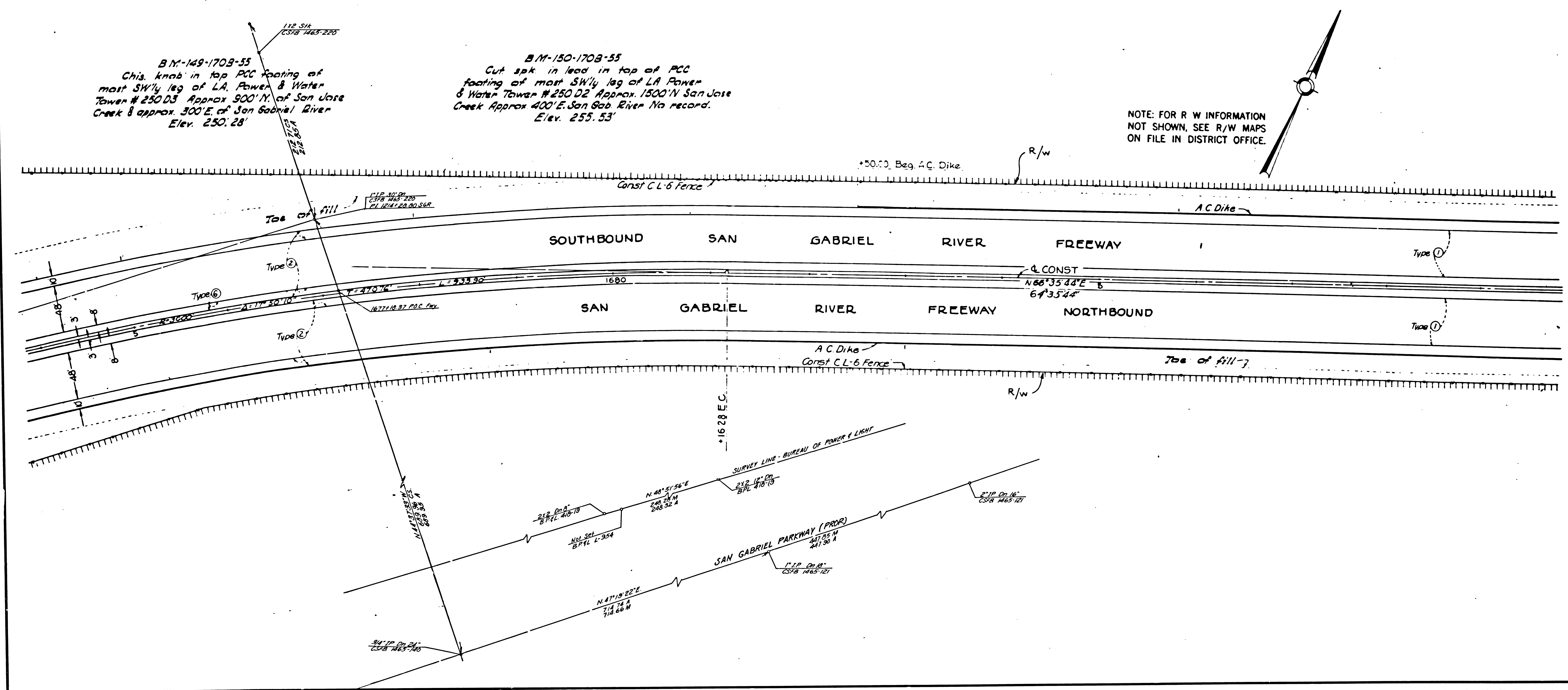
**MONUMENTATION MAP**  
No. MF-1967-3

*C. H. H. H.*  
Deputy District Engineer

**BM-149-1708-55**  
Chis. knob in top PCC footing of  
most SW'ly leg of LA Power & Water  
Tower # 250 D3 Approx 900' N. of San Jose  
Creek & approx. 300' E. of San Gabriel River  
Elev. 250.28'

**BM-150-1708-55**  
Cut spk in lead in top of PCC  
footing of most SW'ly leg of LA Power  
& Water Tower # 250 D2 Approx. 1500' N San Jose  
Creek Approx 400' E. San Gab. River No record.  
Elev. 255.53'

NOTE: FOR R/W INFORMATION  
NOT SHOWN, SEE R/W MAPS  
ON FILE IN DISTRICT OFFICE.



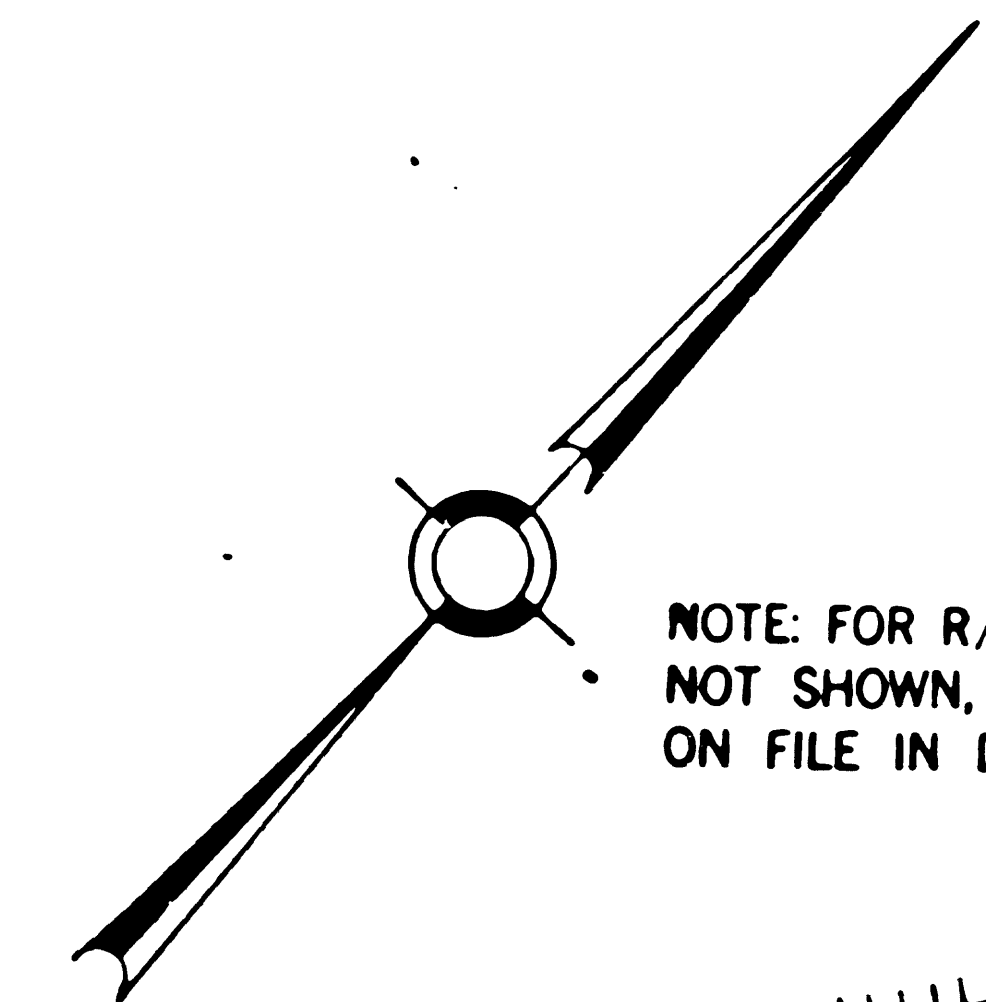


DIST.	COUNTY	NO. FILE	POST-MILES - TOTAL PROJECT	SHEET NO.	TOTAL SHEETS
07	LA	605	16.85-20.2	9	19

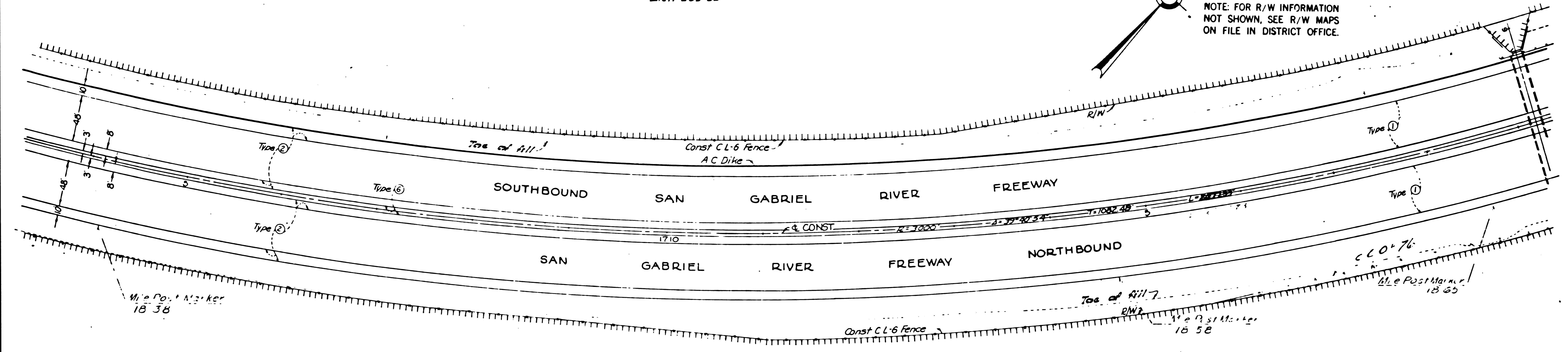
STATE OF CALIFORNIA  
HIGHWAY TRANSPORTATION AGENCY  
DEPARTMENT OF PUBLIC WORKS  
DIVISION OF HIGHWAYS  
**MONUMENTATION MAP**  
No. MF-1967-5

*C. W. Hoyle*  
Deputy District Engineer

B.M. 153-703-55  
This knob on top FCC footing of  
the most NE'ly leg of L.A. Water &  
Power Tower # 249 D7. Approx 3800 N. of  
San Jose Creek approx 800 E. of San Gab River.  
Elev. 265.22'



NOTE: FOR R/W INFORMATION  
NOT SHOWN, SEE R/W MAPS  
ON FILE IN DISTRICT OFFICE.



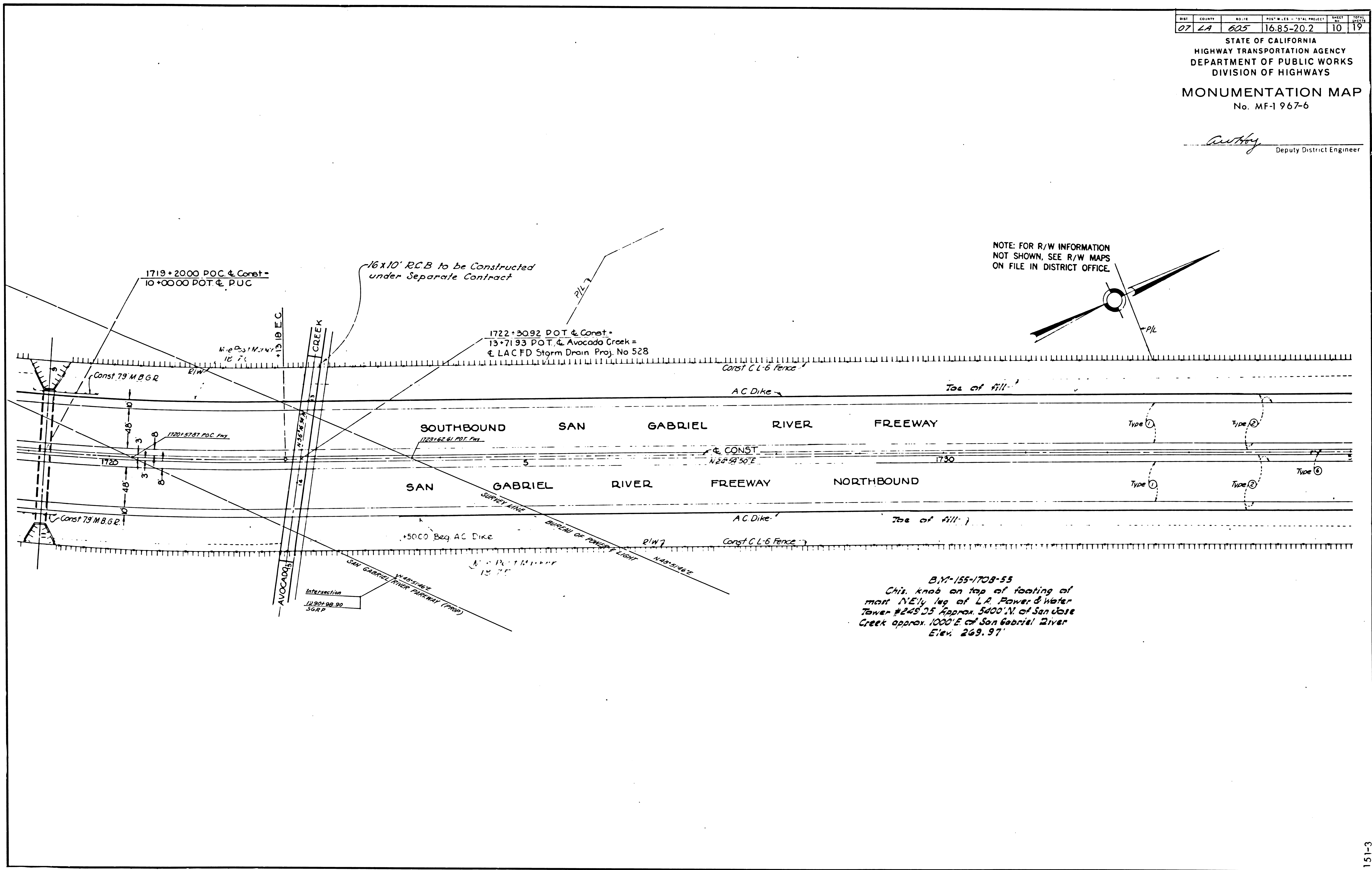
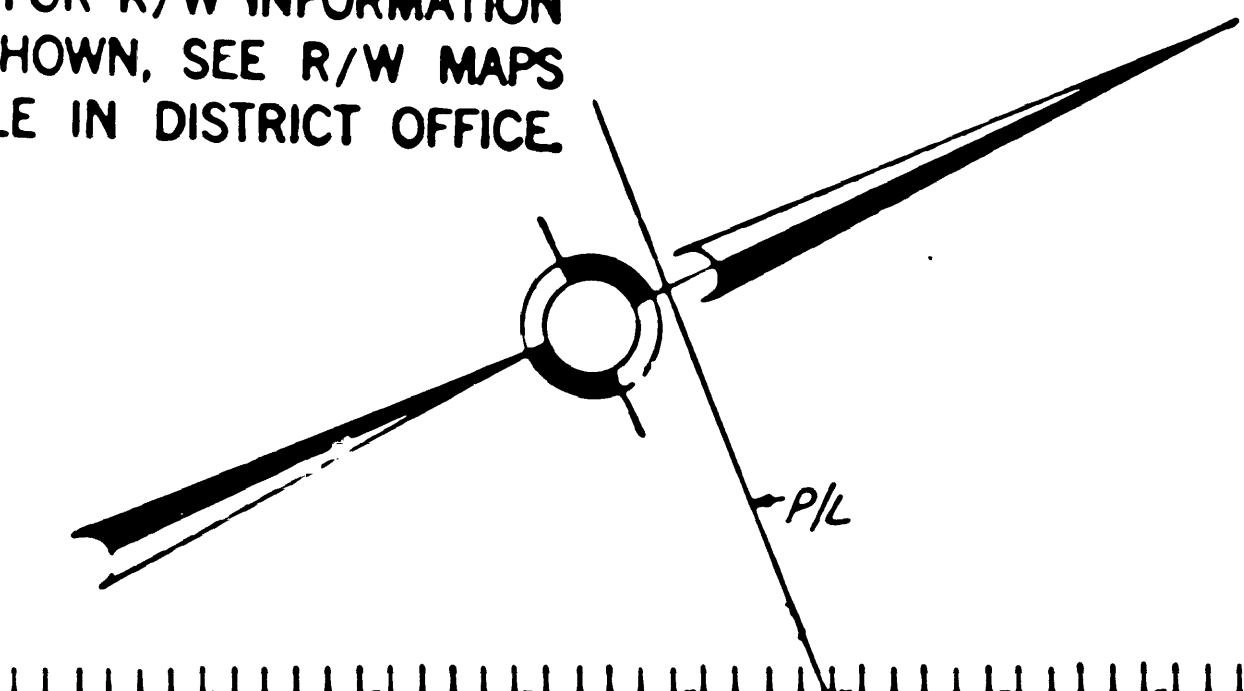
151-3

DIST	COUNTY	RD. NO.	POST MILES - TOTAL PROJECT	SHEET NO.	TOTAL SHEETS
07	LA	605	16.85-20.2	10	19

STATE OF CALIFORNIA  
HIGHWAY TRANSPORTATION AGENCY  
DEPARTMENT OF PUBLIC WORKS  
DIVISION OF HIGHWAYS  
**MONUMENTATION MAP**  
No. MF-1 967-6

*Anthony*  
Deputy District Engineer

NOTE: FOR R/W INFORMATION  
NOT SHOWN, SEE R/W MAPS  
ON FILE IN DISTRICT OFFICE.



B.M. 155-1708-55  
This knob on top of footing of  
most N.E. leg of L.A. Power & Water  
Tower #245'05' approx. 5400' N. of San Jose  
Creek approx. 1000' E. of San Gabriel River  
Elev. 269.97'

151-3

DIST	COUNTY	NO. 116	POST MILES - TOTAL PROJECT	SHEET NO.	TOTAL SHEETS
07	LA	605	16.85-20.2	11	19

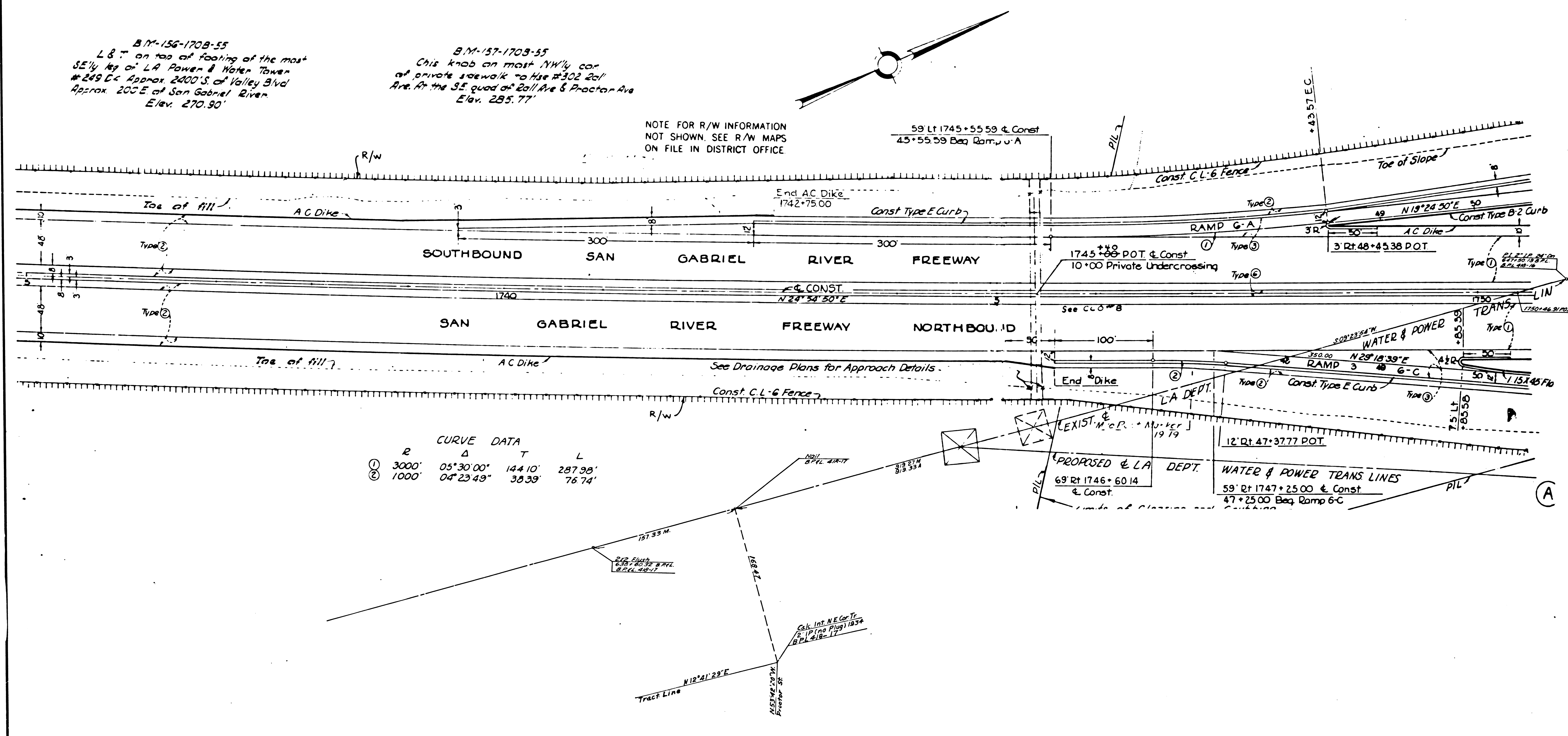
STATE OF CALIFORNIA  
HIGHWAY TRANSPORTATION AGENCY  
DEPARTMENT OF PUBLIC WORKS  
DIVISION OF HIGHWAYS  
MONUMENTATION MAP  
No. MF-1967-7

*Anthony*  
Deputy District Engineer

B.M. 156-1708-55  
L & T on top of footing of the most  
SE 1/4 leg of LA Power & Water Tower  
#249 E. Approx. 2400 S. of Valley Blvd  
Approx. 200 E. of San Gabriel River  
Elev. 270.90'

B.M. 157-1703-55  
Chip knob on most NW 1/4 cor  
of private sidewalk to Hse #302 2nd  
Ave. At the SE quad of 2nd Ave & Proctor Ave  
Elev. 285.77'

NOTE FOR R/W INFORMATION  
NOT SHOWN. SEE R/W MAPS  
ON FILE IN DISTRICT OFFICE.



CURVE DATA

	R	Δ	T	L
①	3000'	05°30'00"	144.10'	287.98'
②	1000'	04°23'49"	38.39'	76.74'