

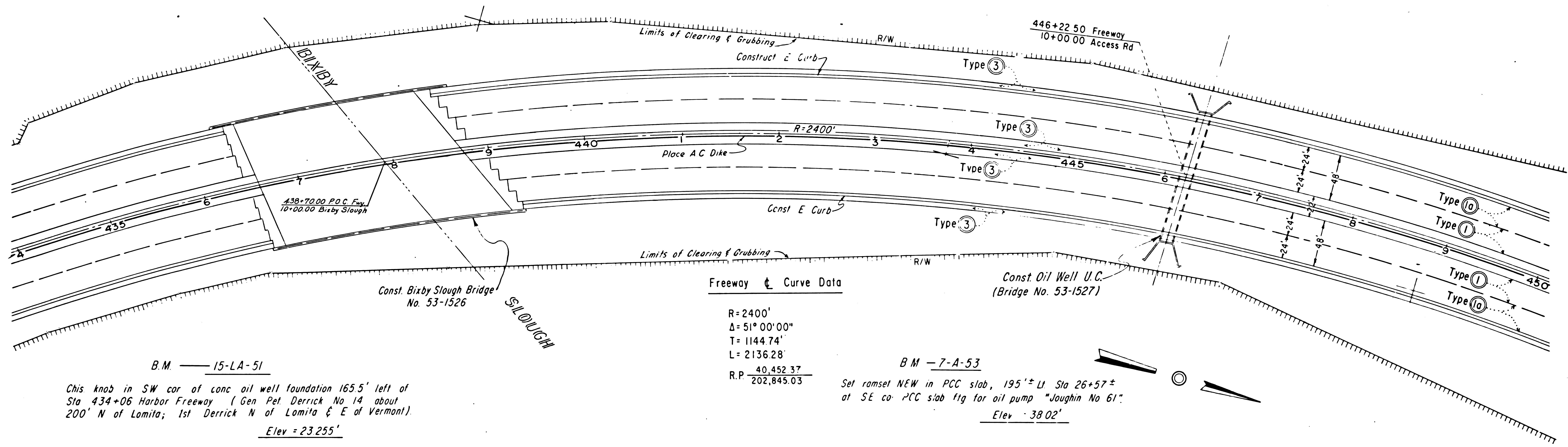
SHEET	COUNTY	ROUTE	POST MILES - TOTAL PROJECT	SHEET NO.	TOTAL SHEETS
7	LA	11	4.06-7.74	4	14

STATE OF CALIFORNIA  
HIGHWAY TRANSPORTATION AGENCY  
DEPARTMENT OF PUBLIC WORKS  
DIVISION OF HIGHWAYS

**MONUMENTATION MAP**  
No. MF-1345-1

*Anthony*  
Deputy District Engineer

COUNTY OF LOS ANGELES



Freeway & Curve Data

R=2400'  
Δ=51°00'00"  
T=1144.74'  
L=2136.28'  
R.P.  $\frac{40,452.37}{202,845.03}$

B.M. -7-A-53  
Set ramset NEW in PCC slab, 195'± LI Sta 26+57±  
at SE co. PCC slab 11g for oil pump "Jaughin No 61".  
Elev. 38.02'

B.M. -15-LA-51  
This knob in SW cor of conc oil well foundation 165.5' left of  
Sta 434+06 Harbor Freeway (Gen. Per. Derrick No 14 about  
200' N of Lomita; 1st Derrick N of Lomita & E of Vermont).  
Elev. = 23.255'



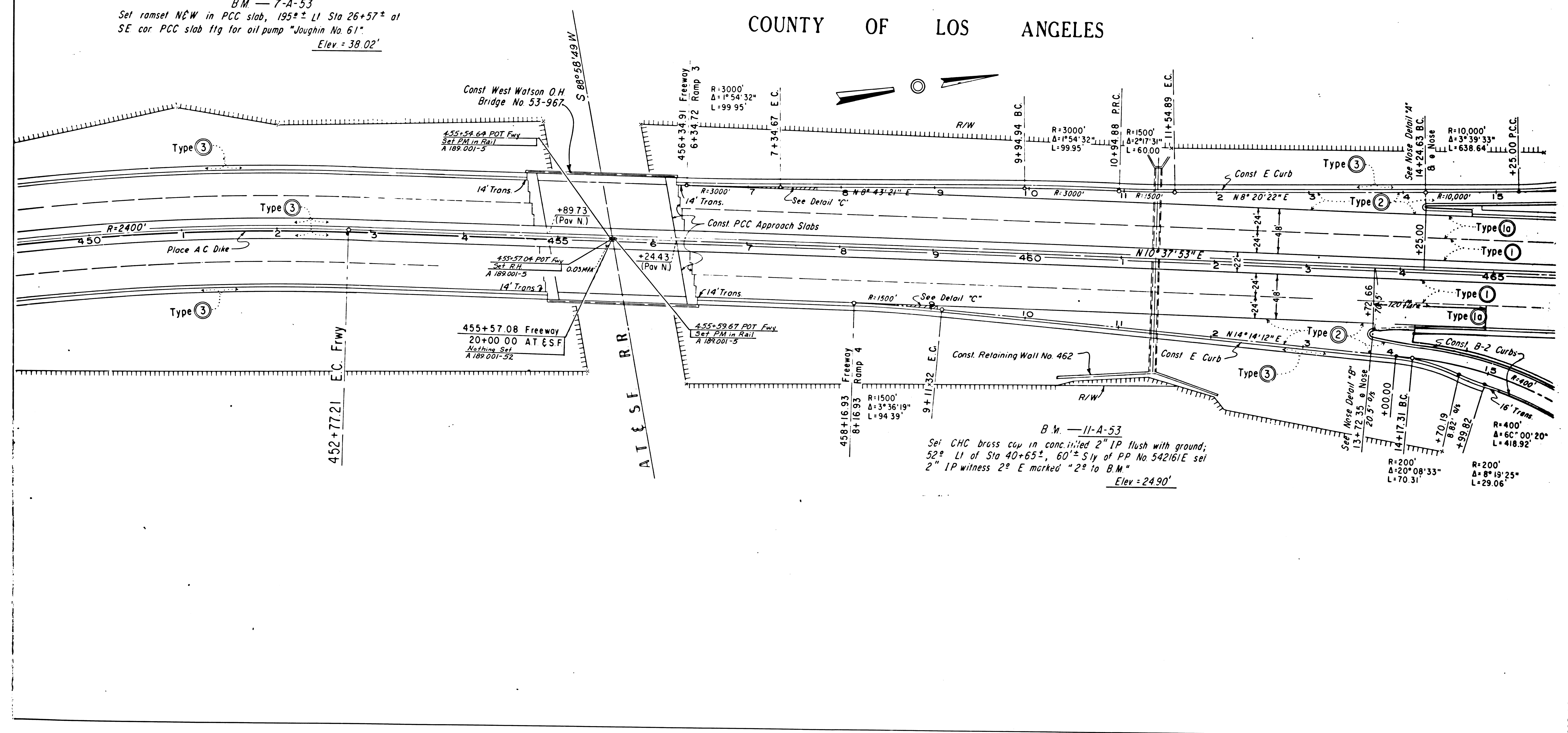
SHEET NO.	TOTAL SHEETS
5	14

STATE OF CALIFORNIA  
HIGHWAY TRANSPORTATION AGENCY  
DEPARTMENT OF PUBLIC WORKS  
DIVISION OF HIGHWAYS  
**MONUMENTATION MAP**  
No. MF-1345-2

*Anthony*  
Deputy District Engineer

COUNTY OF LOS ANGELES

B.M. — 7-A-53  
Set ramset N&W in PCC slab, 195± LI Sta 26+57± at  
SE cor. PCC slab flg for oil pump "Joughin No. 61".  
Elev. = 38.02'



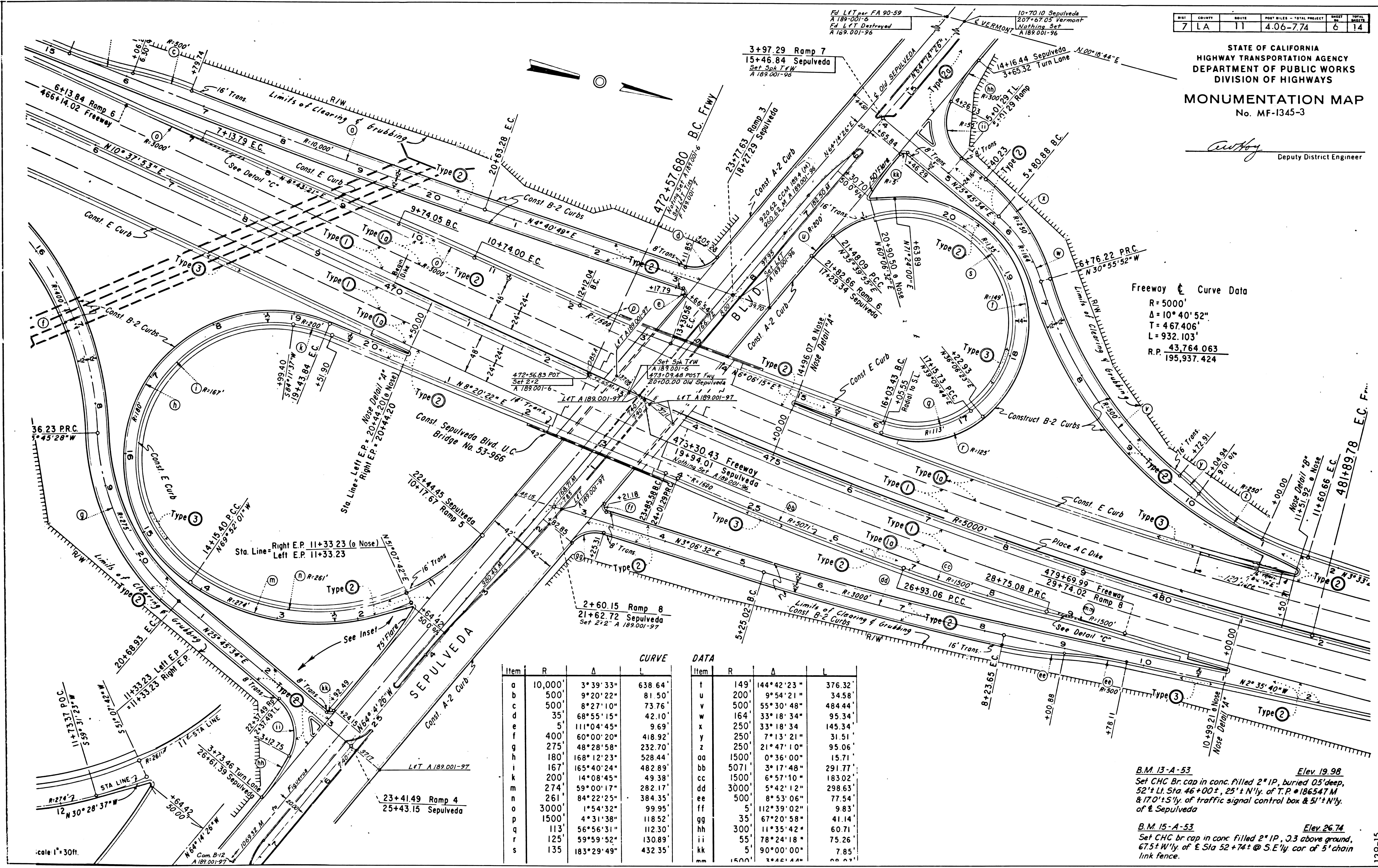
B.M. — 11-A-53  
Set CHC brass cap in conc. in 2" IP flush with ground;  
52± LI of Sta 40+65±, 60± S of PP No 542161E sei  
2" IP witness 2° E marked "2° to B.M."  
Elev. = 24.90'



DATE	ISSUED	BY	POST MILES - TOTAL PROJECT	SHEET NO.	TOTAL SHEETS
7	LA	11	4.06-7.74	6	14

STATE OF CALIFORNIA  
HIGHWAY TRANSPORTATION AGENCY  
DEPARTMENT OF PUBLIC WORKS  
DIVISION OF HIGHWAYS  
**MONUMENTATION MAP**  
No. MF-1345-3

*Anthony*  
Deputy District Engineer



**Freeway & Curve Data**  
 R=5000'  
 $\Delta=10^{\circ}40'52''$   
 T=467.406'  
 L=932.103'  
 R.P. 43.764.063  
 195,937.424

CURVE DATA				CURVE DATA			
Item	R	A	L	Item	R	A	L
a	10,000'	3°39'33"	638.64'	t	149'	144°42'23"	376.32'
b	500'	9°20'22"	81.50'	u	200'	9°54'21"	34.58'
c	500'	8°27'10"	73.76'	v	500'	55°30'48"	484.44'
d	35'	68°55'15"	42.10'	w	164'	33°18'34"	95.34'
e	5'	111°04'45"	9.69'	x	250'	33°18'34"	145.34'
f	400'	60°00'20"	418.92'	y	250'	7°13'21"	31.51'
g	275'	48°28'58"	232.70'	z	250'	21°47'10"	95.06'
h	180'	168°12'23"	528.44'	aa	1500'	0°36'00"	15.71'
i	167'	165°40'24"	482.89'	bb	5071'	3°17'48"	291.77'
k	200'	14°08'45"	49.38'	cc	1500'	6°57'10"	183.02'
m	274'	59°00'17"	282.17'	dd	3000'	5°42'12"	298.63'
n	261'	84°22'25"	384.35'	ee	500'	8°53'06"	77.54'
o	3000'	1°54'32"	99.95'	ff	5'	112°39'02"	9.83'
p	1500'	4°31'38"	118.52'	gg	35'	67°20'58"	41.14'
q	113'	56°56'31"	112.30'	hh	300'	11°35'42"	60.71'
r	125'	59°59'52"	130.89'	ii	55'	78°24'18"	75.26'
s	135'	183°29'49"	432.35'	kk	5'	90°00'00"	7.85'
				mm	1500'	3°46'44"	66.27'

**B.M. 13-A-53** Elev. 19.98  
 Set CHC Br. cap in conc. filled 2" IP, buried 05' deep,  
 52'± Lt. Sta 46+00±, 25'± N'ly. of T.P. #186547 M  
 & 170'± S'ly. of traffic signal control box & 51'± N'ly.  
 of E Sepulveda

**B.M. 15-A-53** Elev. 26.74  
 Set CHC Br. cap in conc. filled 2" IP, 3.3 above ground,  
 67.5'± N'ly. of E Sta 52+74± @ S.E'ly. cor. of 5' chain  
 link fence.



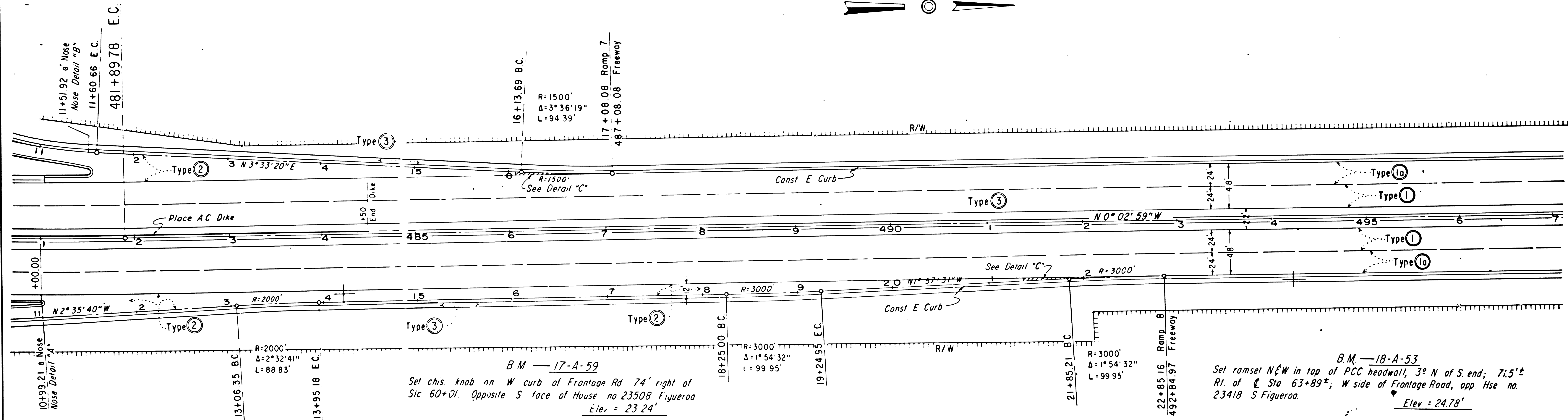
22

SHEET	COUNTY	ROUTE	POST MILES - TOTAL PROJECT	SHEET NO.	TOTAL SHEETS
7	LA	11	4.06-7.74	7	14

STATE OF CALIFORNIA  
HIGHWAY TRANSPORTATION AGENCY  
DEPARTMENT OF PUBLIC WORKS  
DIVISION OF HIGHWAYS  
**MONUMENTATION MAP**  
No. MF-1345-4

*C. W. H. H.*  
Deputy District Engineer

COUNTY OF LOS ANGELES



139-15

