

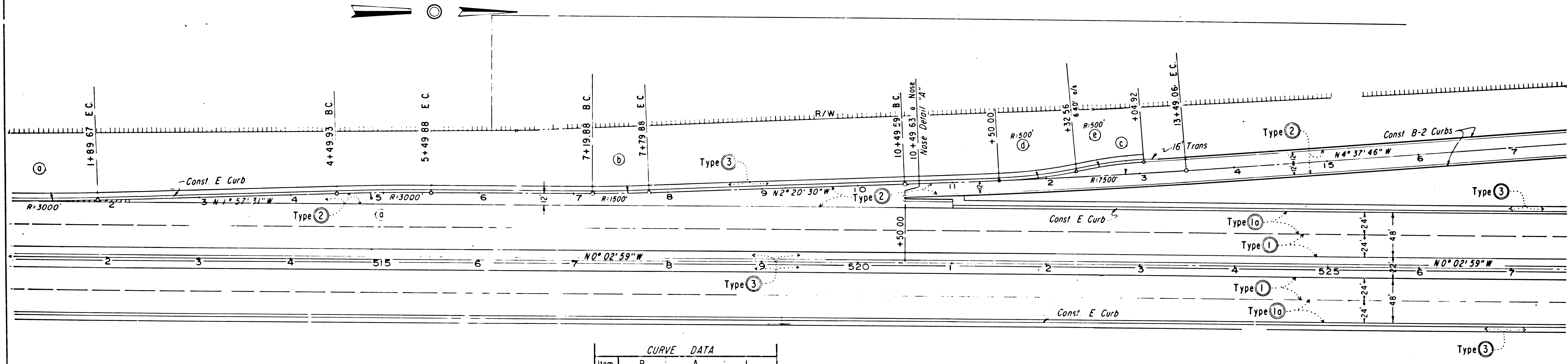
26

SHEET NO.	TOTAL SHEETS
7	14

STATE OF CALIFORNIA  
 HIGHWAY TRANSPORTATION AGENCY  
 DEPARTMENT OF PUBLIC WORKS  
 DIVISION OF HIGHWAYS  
**MONUMENTATION MAP**  
 No. MF-1346-1

*Anthony*  
 Deputy District Engineer

COUNTY OF LOS ANGELES



CURVE DATA			
Item	R	Δ	L
a	3000'	1° 54' 32"	99.95'
b	1500'	2° 17' 31"	60.00'
c	7500'	2° 17' 16"	299.47'
d	500'	9° 29' 47"	82.87'
e	500'	8° 18' 46"	72.54'

BM — 22-A-53  
 Set CS&W in PMS, 50.3' Lt of Sta 90+70.5±, at N end of a 4" Ch. link fence, 15' NE of a 5" stl pipe sign "Olives Cafe"  
 Elev = 43.04'

BM — 24-A-53  
 Set GHC br cap in conc. tilled 2" IP flush w/ ground, 51± Lt of Sta 102+14.5±; 66± N'y of PP no 483788E, at 5.5' wood fence, set 2" IP witness 2° S, Mkd "BM 2° N"  
 Elev = 39.66'

139-15

23

DIST	COUNTY	ROUTE	POST MILES - TOTAL PROJECT	SHEET NO.	TOTAL SHEETS
7	LA	11	4.06-7.74	10	14

# COUNTY OF LOS ANGELES

STATE OF CALIFORNIA  
HIGHWAY TRANSPORTATION AGENCY  
DEPARTMENT OF PUBLIC WORKS  
DIVISION OF HIGHWAYS

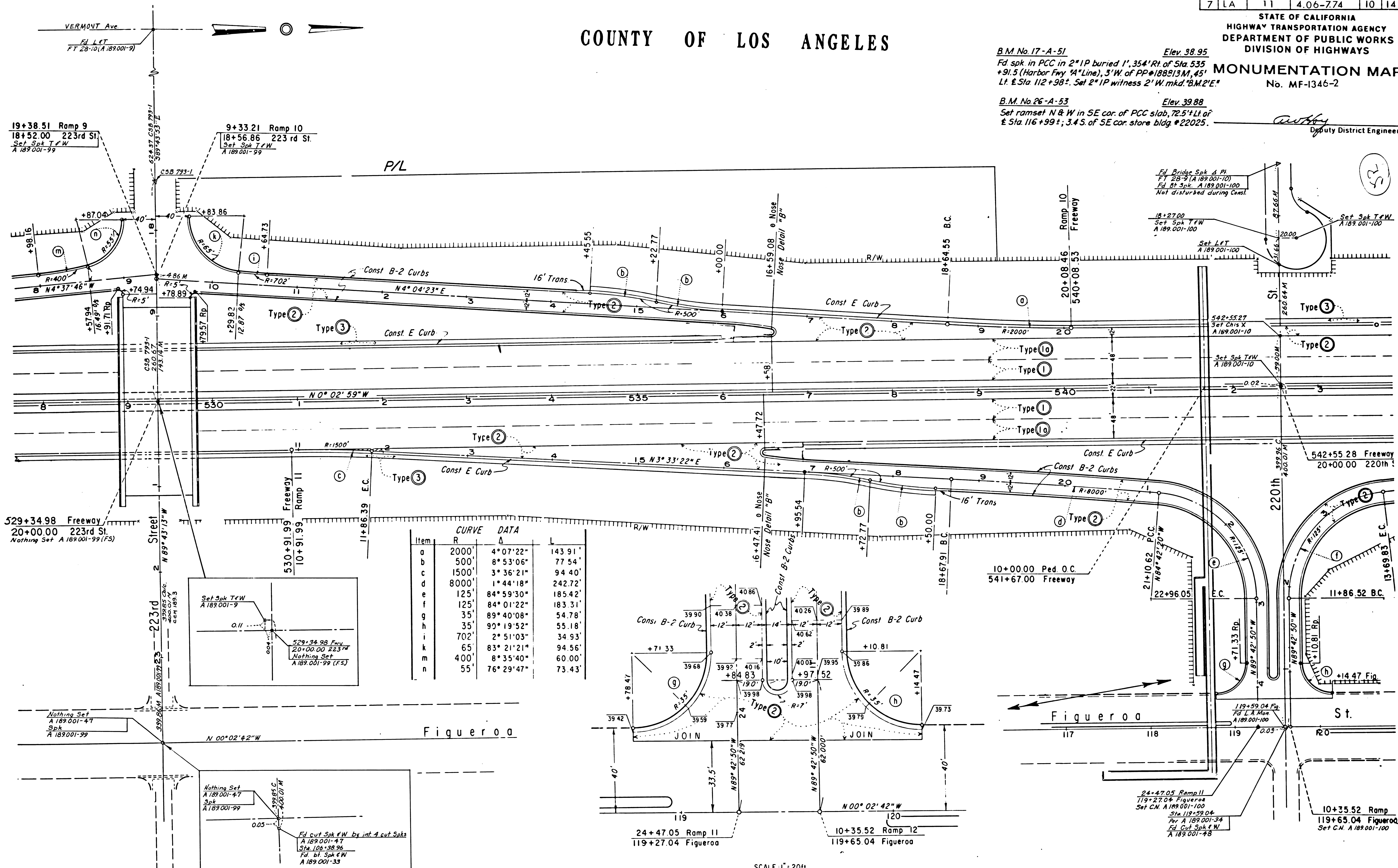
## MONUMENTATION MAP

No. MF-1346-2

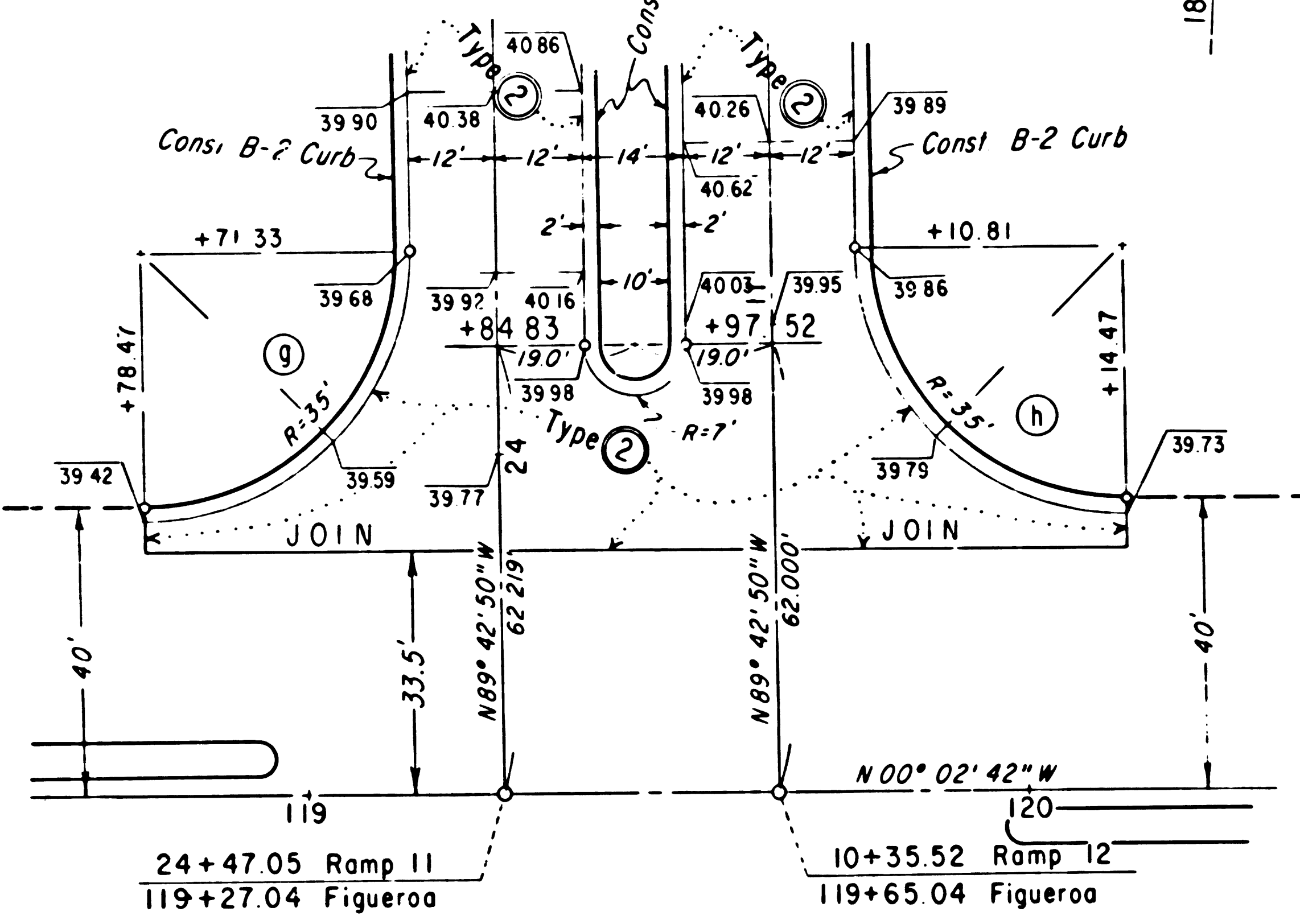
B.M. No. 17-A-51 Elev. 38.95  
Fd. spk. in PCC in 2" IP buried 1', 35.4" Rt. of Sta. 535  
+91.5 (Harbor Fwy 4" Line), 3' W. of PP#188913M, 45'  
Lt. E. Sta. 112+98.2. Set 2" IP witness 2' W. mkd. "B.M. 2'E"

B.M. No. 26-A-53 Elev. 39.88  
Set ramset N & W in SE cor. of PCC slab, 72.5' Lt. of  
E. Sta. 116+99.2; 3.4 S. of SE cor. store bldg #22025.

*[Signature]*  
Deputy District Engineer



Item	R	Δ	L
a	2000'	4° 07' 22"	143.91'
b	500'	8° 53' 06"	77.54'
c	1500'	3° 36' 21"	94.40'
d	8000'	1° 44' 18"	242.72'
e	125'	84° 59' 30"	185.42'
f	125'	84° 01' 22"	183.31'
g	35'	89° 40' 08"	54.78'
h	35'	90° 19' 52"	55.18'
i	702'	2° 51' 03"	34.93'
j	65'	83° 21' 21"	94.56'
k	400'	8° 35' 40"	60.00'
n	55'	76° 29' 47"	73.43'



SCALE 1" = 20'

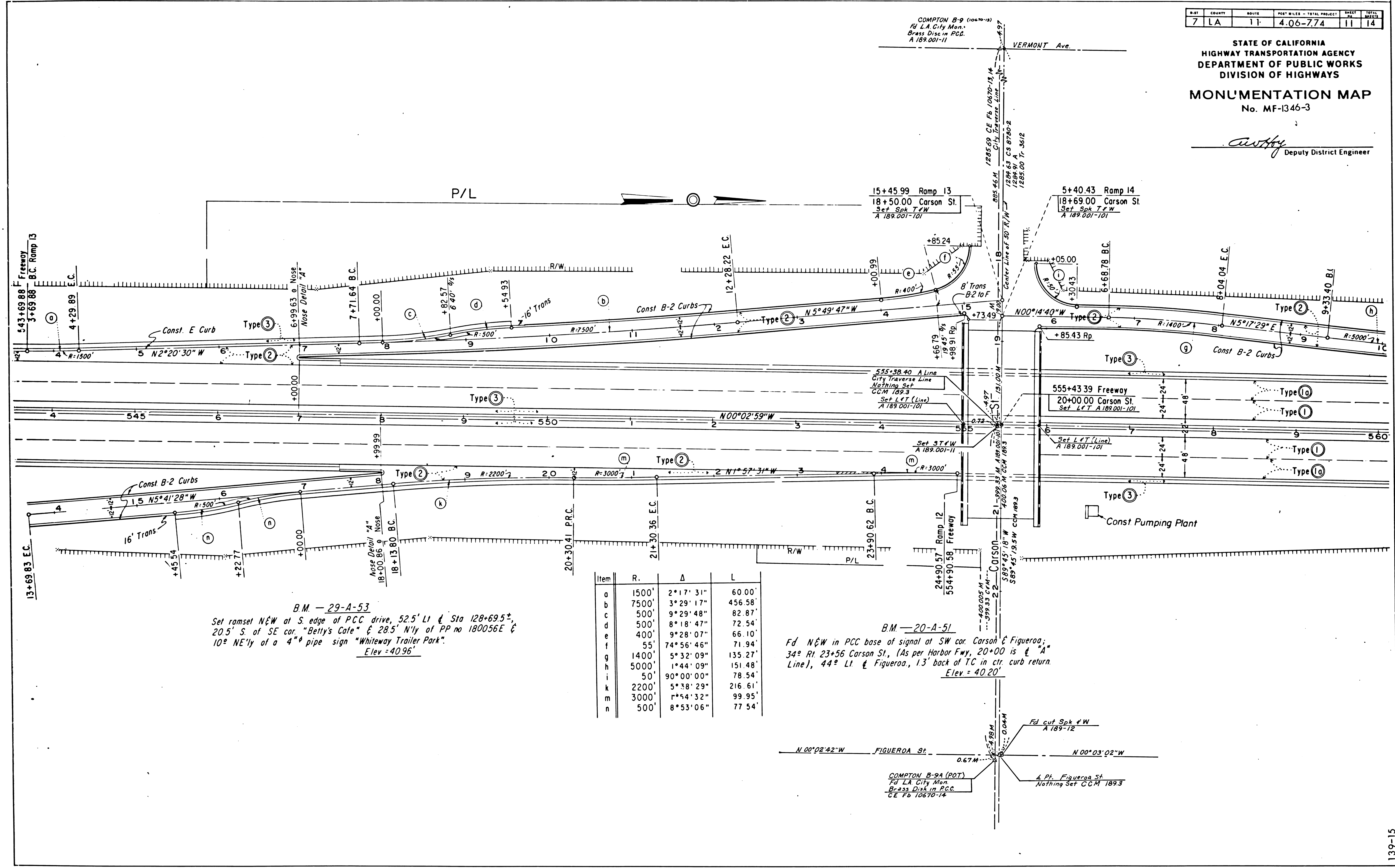
139-15

DIST	COUNTY	ROUTE	POST MILES - TOTAL PROJECT	SHEET NO.	TOTAL SHEETS
7	LA	11	4.06-7.74	11	14

STATE OF CALIFORNIA  
HIGHWAY TRANSPORTATION AGENCY  
DEPARTMENT OF PUBLIC WORKS  
DIVISION OF HIGHWAYS

**MONUMENTATION MAP**  
No. MF-1346-3

*C. W. Coffey*  
Deputy District Engineer



Item	R.	Δ	L
a	1500'	2°17'31"	60.00'
b	7500'	3°29'17"	456.58'
c	500'	9°29'48"	82.87'
d	500'	8°18'47"	72.54'
e	400'	9°28'07"	66.10'
f	55'	74°56'46"	71.94'
g	1400'	5°32'09"	135.27'
h	5000'	1°44'09"	151.48'
i	50'	90°00'00"	78.54'
k	2200'	5°38'29"	216.61'
m	3000'	1°54'32"	99.95'
n	500'	8°53'06"	77.54'

B.M. - 29-A-53  
Set ramset N&W at S. edge of PCC drive, 52.5' LI & Sta 128+69.5±,  
20.5' S. of SE cor. "Betty's Cafe" & 28.5' N'ly of PP no 180056E &  
10° NE'ly of a 4" pipe sign "Whiteway Trailer Park".  
Elev = 40.96'

B.M. - 20-A-51  
Fd N&W in PCC base of signal at SW cor. Carson & Figueroa;  
34° Rt 23+56 Carson St. (As per Harbor Fwy, 20+00 is & "A"  
Line), 44° LI & Figueroa, 13' back of TC in ctr curb return.  
Elev = 40.20'

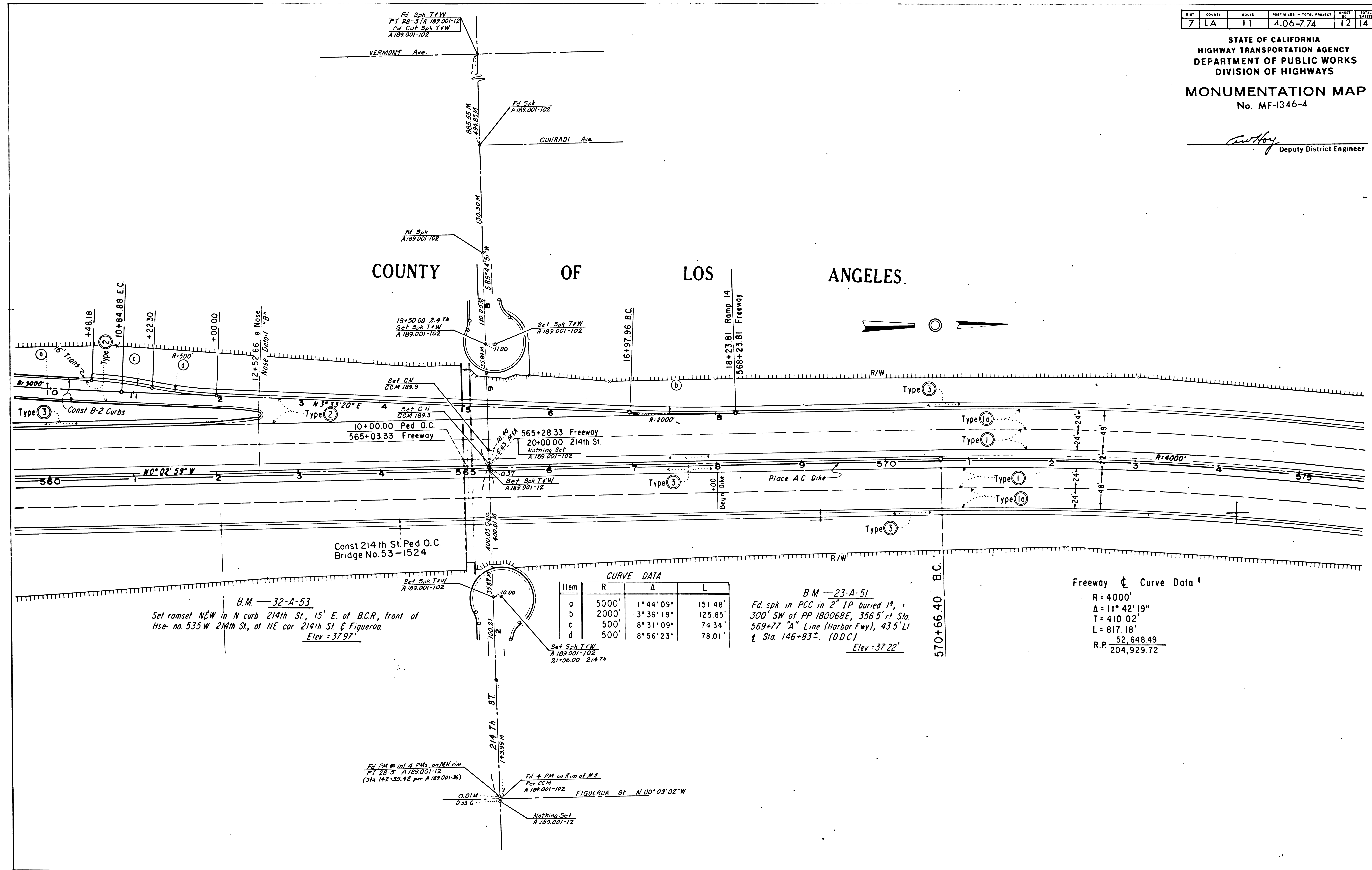
SHEET	COUNTY	ROUTE	POST MILES - TOTAL PROJECT	SHEET	TOTAL SHEETS
7	LA	11	4.06-7.74	12	14

STATE OF CALIFORNIA  
HIGHWAY TRANSPORTATION AGENCY  
DEPARTMENT OF PUBLIC WORKS  
DIVISION OF HIGHWAYS

**MONUMENTATION MAP**  
No. MF-1346-4

*Anthony*  
Deputy District Engineer

COUNTY OF LOS ANGELES



**CURVE DATA**

Item	R	Δ	L
a	5000'	1°44'09"	151.48'
b	2000'	3°36'19"	125.85'
c	500'	8°31'09"	74.34'
d	500'	8°56'23"	78.01'

**B.M. -23-A-51**  
Fd spk in PCC in 2" IP buried 1",  
300' SW of PP 180068E, 356.5' r/ Sta  
569+77 "A" Line (Harbor Fwy), 43.5' LI  
& Sta. 146+83±. (D.D.C.)  
Elev = 37.22'

**Freeway Curve Data**  
R = 4000'  
Δ = 11°42'19"  
T = 410.02'  
L = 817.18'  
R.P. = 52,648.49  
204,929.72

**B.M. -32-A-53**  
Set ramset N&W in N curb 214th St, 15' E. of B.C.R. front of  
Hse. no. 535 W 214th St, at NE cor. 214th St. & Figueroa.  
Elev = 37.97'

Fd. PM on int. 4 Pts. on MH rim  
FT 28-3 A 189 001-12  
(Sta. 142+55.42 per A 189 001-36)

Fd. 4 PM on Rim of M.H.  
Per CCM  
A 189 001-102

FIGUEROA St. N 00°03'02"W

Nothing Set  
A 189 001-12



DATE	COUNTY	ROUTE	POST MILES - TOTAL PROJECT	SHEET NO.	TOTAL SHEETS
7	LA	11	4.06-7.74	14	14

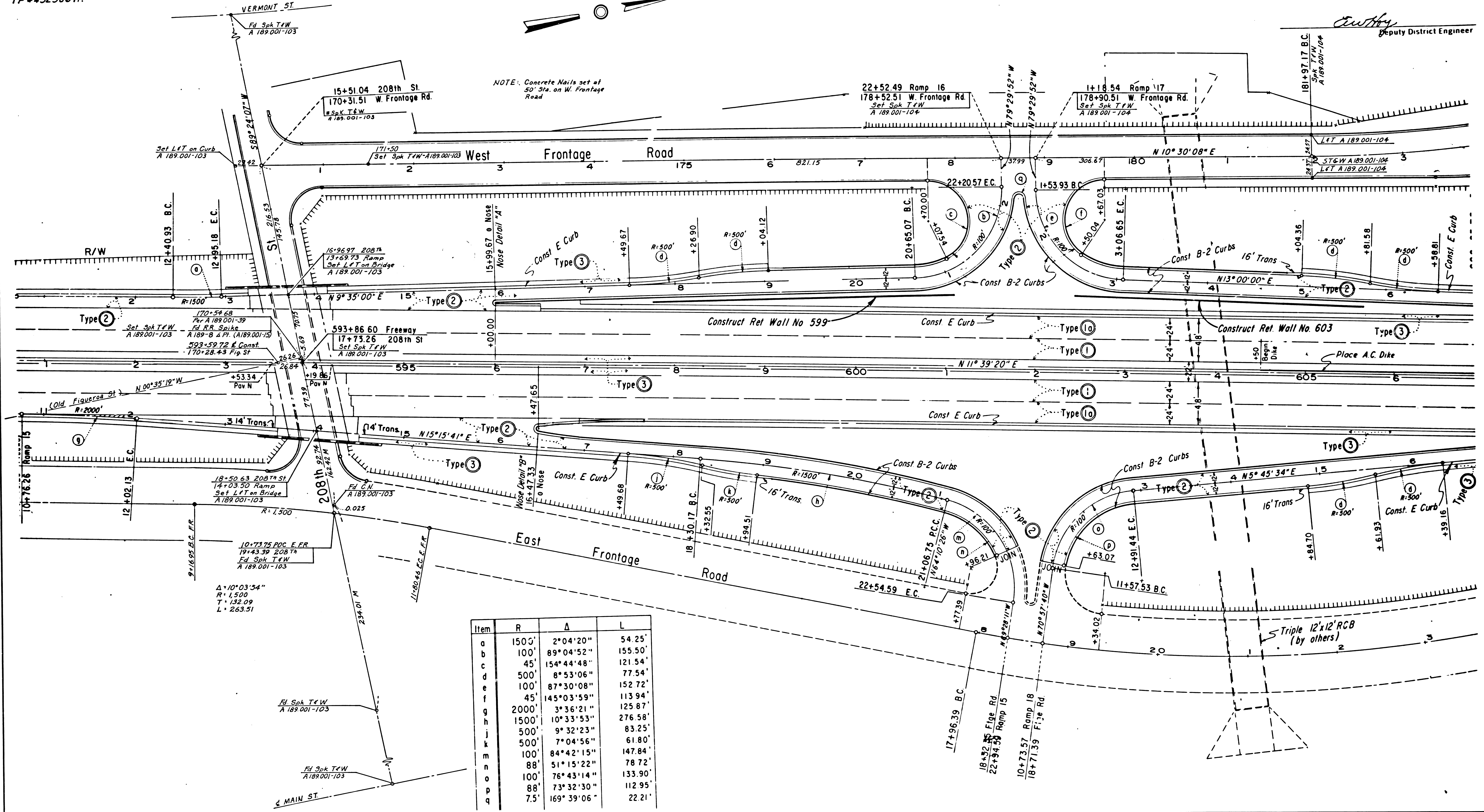
STATE OF CALIFORNIA  
HIGHWAY TRANSPORTATION AGENCY  
DEPARTMENT OF PUBLIC WORKS  
DIVISION OF HIGHWAYS  
**MONUMENTATION MAP**  
No. MF-1347-1

COUNTY OF LOS ANGELES

D.M. NO. 407-22  
Set CHC brass cap in conc. filled 2" IP, 1.3' below surface in bank, 51'± Lt. & Sta. 172+00±, 34'± S'y. of PP#858583E. Set 2" IP witness 2'E. Mkd. "BM 2'W".

B.M. No. 41-A-53 Elev. 26.23  
Set ramset N & W in PCC Flg. of sign, 59.5' Rt. & Sta. 174+43.5± @ 5" pipe, W. leg of sign, 54.5'± SE'y. of TP#432986 H.

NOTE: Concrete Nails set at 50' Sta. on W. Frontage Road



Item	R	Δ	L
a	1500'	2°04'20"	54.25'
b	100'	89°04'52"	155.50'
c	45'	154°44'48"	121.54'
d	500'	8°53'06"	77.54'
e	100'	87°30'08"	152.72'
f	45'	145°03'59"	113.94'
g	2000'	3°36'21"	276.58'
h	1500'	10°33'53"	83.25'
i	500'	9°32'23"	61.80'
j	500'	7°04'56"	147.84'
k	100'	84°42'15"	78.72'
m	88'	51°15'22"	133.90'
n	100'	76°43'14"	112.95'
o	88'	73°32'30"	22.21'
p	7.5'	169°39'06"	

139-15