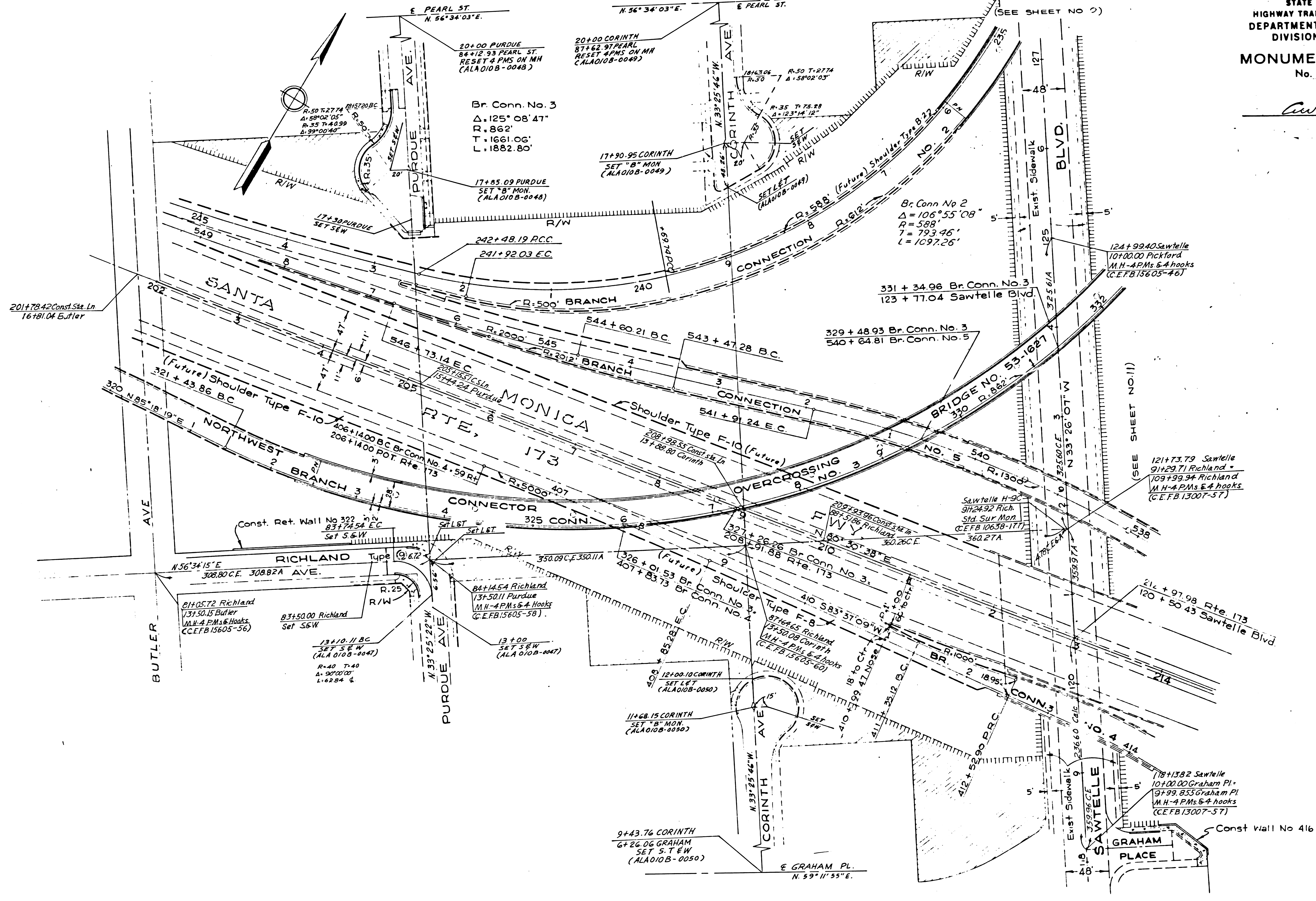


CITY OF LOS ANGELES

7	LA	10	5-3-64	1	11
---	----	----	--------	---	----

STATE OF CALIFORNIA
 HIGHWAY TRANSPORTATION AGENCY
 DEPARTMENT OF PUBLIC WORKS
 DIVISION OF HIGHWAYS
MONUMENTATION MAP
 No. MF-2067-1

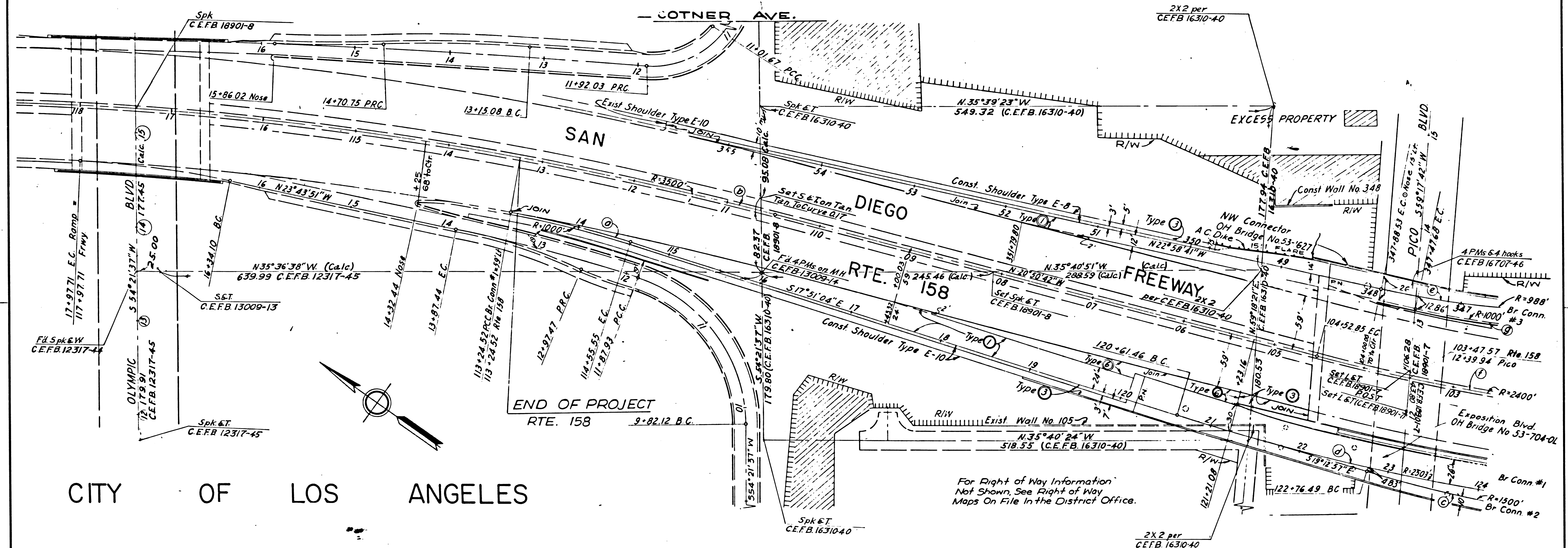
C. Aubrey
 Deputy District Engineer



7	LA	10	5.3-6.4	2	11
---	----	----	---------	---	----

STATE OF CALIFORNIA
HIGHWAY TRANSPORTATION AGENCY
DEPARTMENT OF PUBLIC WORKS
DIVISION OF HIGHWAYS
MONUMENTATION MAP
No. MF-2067-2

C. W. H. H.
Deputy District Engineer



CITY OF LOS ANGELES

For Right of Way Information
Not Shown, See Right of Way
Maps On File In the District Office.

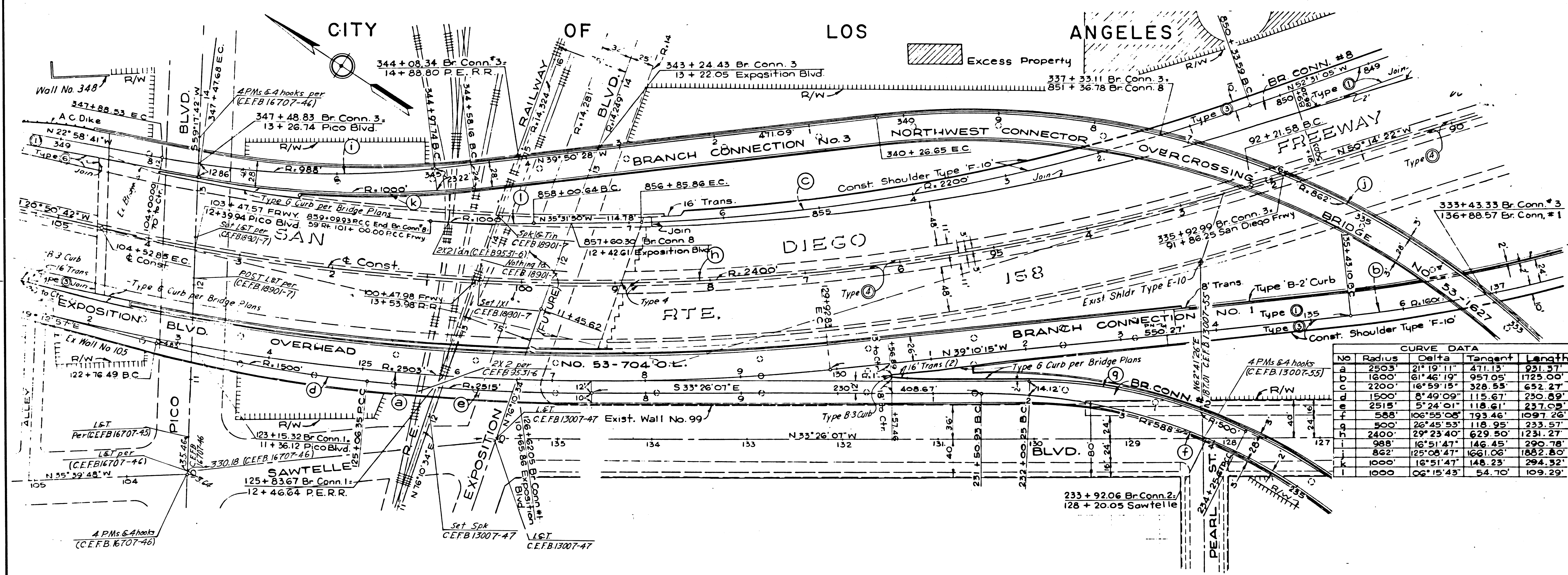
149-6

7	LA	10	5.3-6.4	3	11
---	----	----	---------	---	----

STATE OF CALIFORNIA
HIGHWAY TRANSPORTATION AGENCY
DEPARTMENT OF PUBLIC WORKS
DIVISION OF HIGHWAYS

MONUMENTATION MAP
No. MF-2067-3

Anthony
Deputy District Engineer



CURVE DATA

No	Radius	Delta	Tangent	Length
a	2503'	21° 19' 11"	471.13'	921.37'
b	1600'	61° 46' 19"	957.05'	1725.00'
c	2200'	16° 59' 15"	328.55'	652.27'
d	1500'	8° 49' 09"	115.67'	230.89'
e	2515'	5° 24' 01"	118.61'	237.09'
f	588'	106° 55' 08"	193.46'	1097.26'
g	500'	26° 45' 53"	118.95'	233.57'
h	2400'	29° 23' 40"	629.50'	1231.27'
i	988'	16° 51' 47"	146.45'	290.78'
j	862'	125° 08' 47"	1661.06'	1882.80'
k	1000'	16° 51' 47"	148.23'	294.32'
l	1000'	06° 15' 43"	54.70'	109.29'

CITY OF LOS ANGELES (SEE SHEET NO 12)

POST MILES - TOTAL PROJECT	SHEET NO.	TOTAL SHEETS
5.3-6.4	4	11

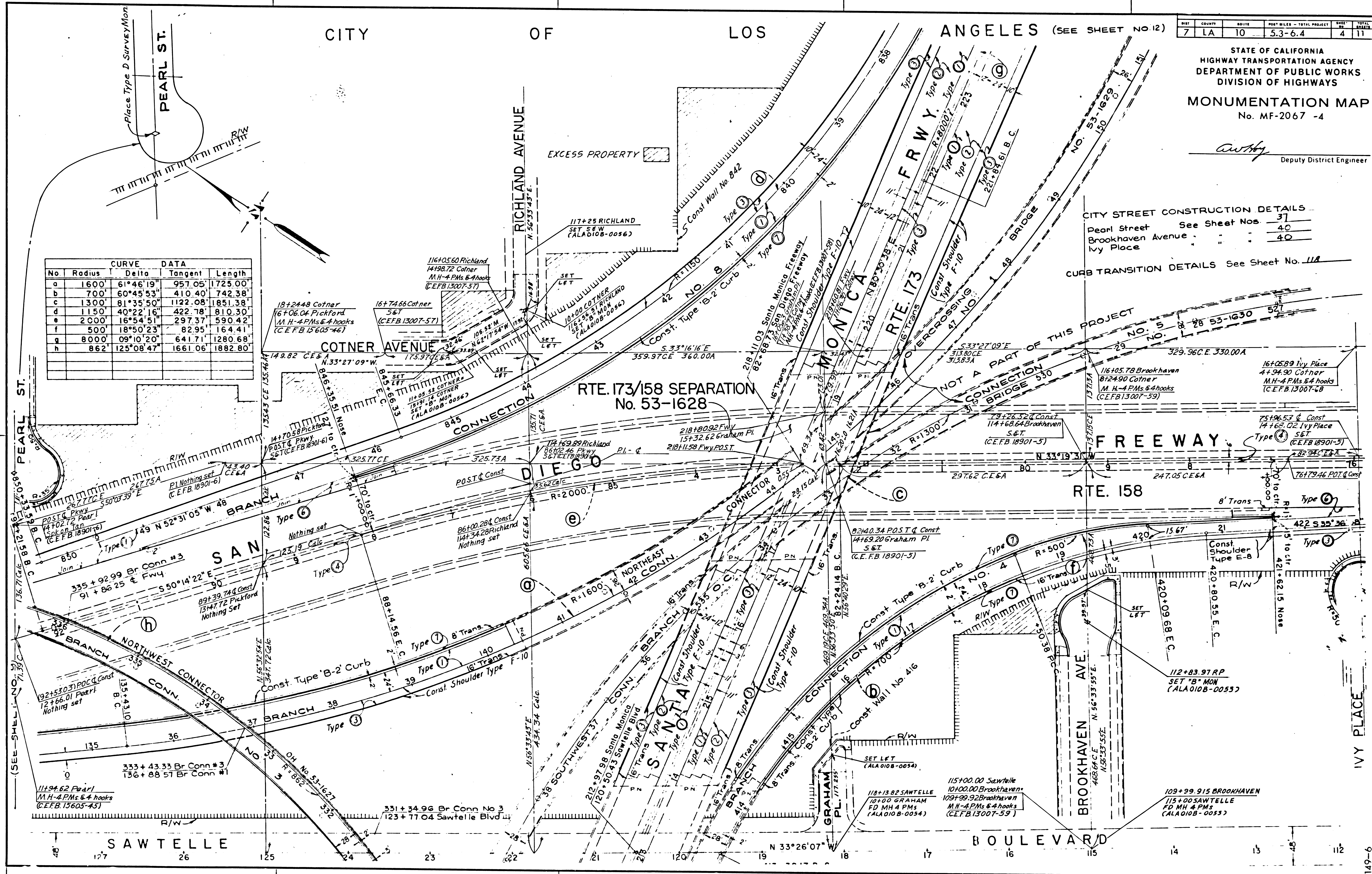
STATE OF CALIFORNIA
HIGHWAY TRANSPORTATION AGENCY
DEPARTMENT OF PUBLIC WORKS
DIVISION OF HIGHWAYS
MONUMENTATION MAP
No. MF-2067 -4

Authy
Deputy District Engineer

No	Radius	Delta	Tangent	Length
a	1600	61°46'19"	957.05	1725.00'
b	700	60°45'53"	410.40	742.38
c	1300	81°35'50"	1122.08	1851.38
d	1150	40°22'16"	422.78	810.30
e	2000	16°54'51"	297.37	590.42
f	500	18°50'23"	82.95	164.41
g	8000	09°10'20"	641.71	1280.68
h	862	125°08'47"	1661.06	1882.80'

CITY STREET CONSTRUCTION DETAILS
 Pearl Street See Sheet Nos. 37
 Brookhaven Avenue 40
 Ivy Place 40

CURB TRANSITION DETAILS See Sheet No. 112

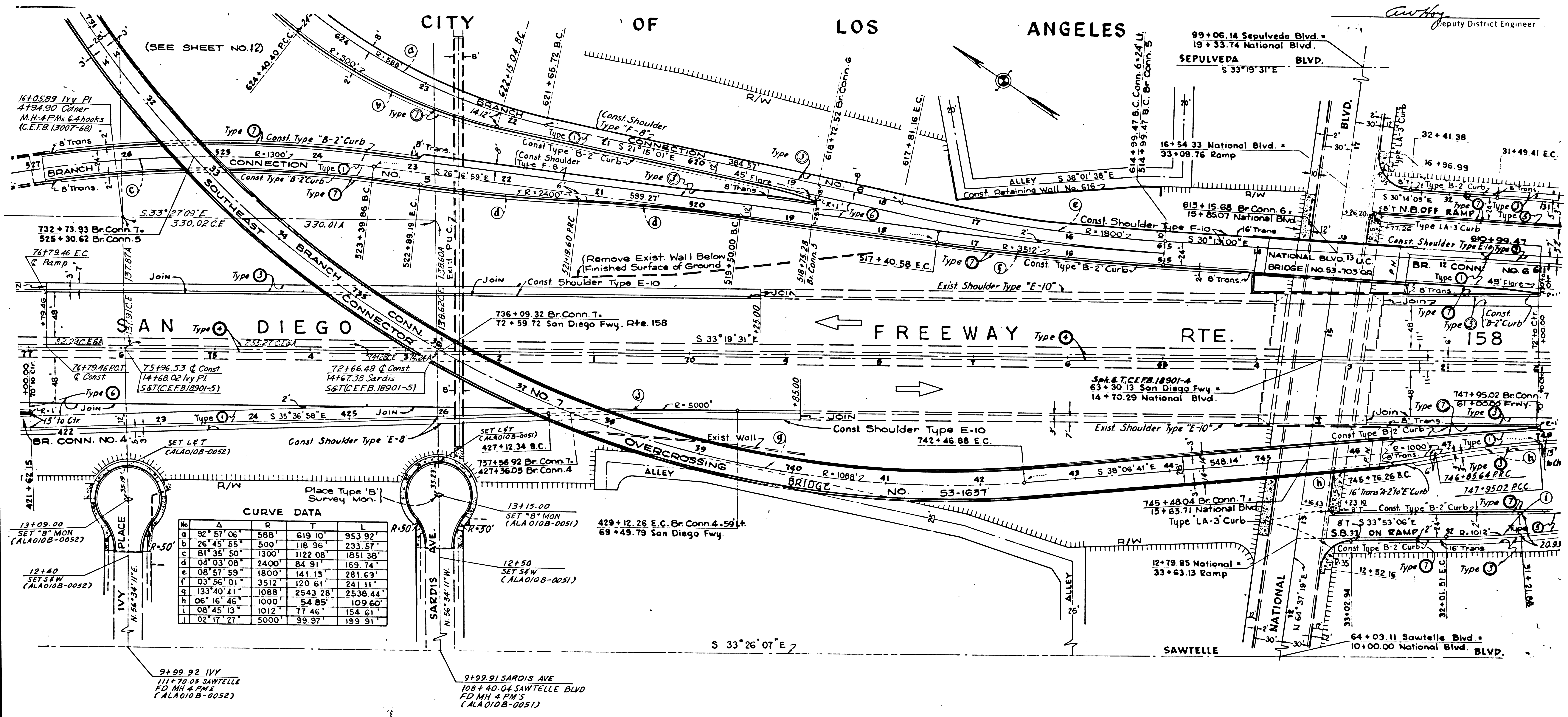


SHEET	COUNTY	NO. 10	POST MILES - TOTAL PROJECT	5.3-6.4	SHEET	TOTAL SHEETS
7	LA				5	11

STATE OF CALIFORNIA
HIGHWAY TRANSPORTATION AGENCY
DEPARTMENT OF PUBLIC WORKS
DIVISION OF HIGHWAYS

MONUMENTATION MAP
No. MF- 2067-5

C. W. Hoyle
Deputy District Engineer



CURVE DATA

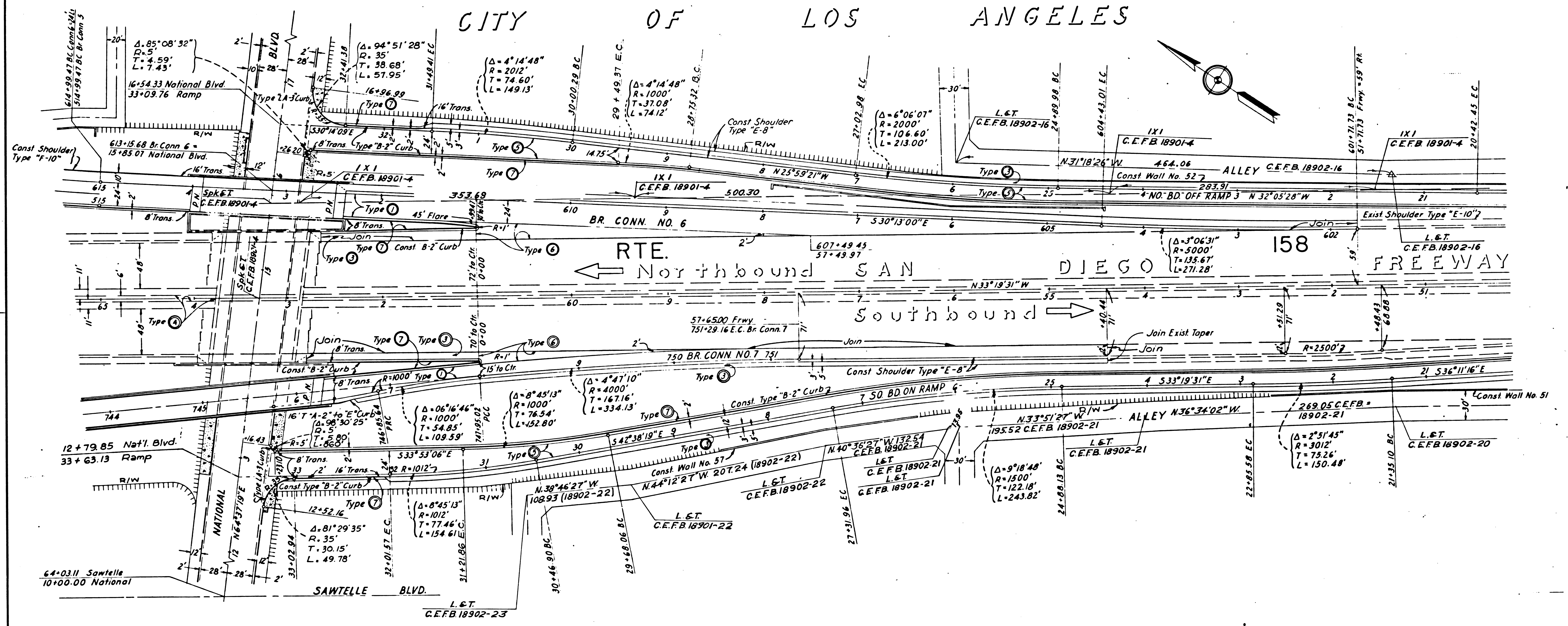
No.	Δ	R	T	L
a	92° 57' 06"	588'	619 10'	953 92'
b	26° 45' 55"	500'	118 96'	233 57'
c	81° 35' 50"	1300'	1122 08'	1851 38'
d	04° 03' 08"	2400'	84 91'	169 74'
e	08° 57' 59"	1800'	141 13'	281 69'
f	03° 56' 01"	3512'	120 61'	241 11'
g	133° 40' 41"	1088'	2543 28'	2538 44'
h	06° 16' 46"	1000'	54 85'	109 60'
i	08° 45' 13"	1012'	77 46'	154 61'
j	02° 17' 27"	5000'	99 97'	199 91'

SHEET	COUNTY	SECTION	POST MILES - TOTAL PROJECT	SHEET	TOTAL SHEETS
7	LA	10	53-6.4	6	11

STATE OF CALIFORNIA
HIGHWAY TRANSPORTATION AGENCY
DEPARTMENT OF PUBLIC WORKS
DIVISION OF HIGHWAYS
MONUMENTATION MAP
No. MF-2067-6

Anthony
Deputy District Engineer

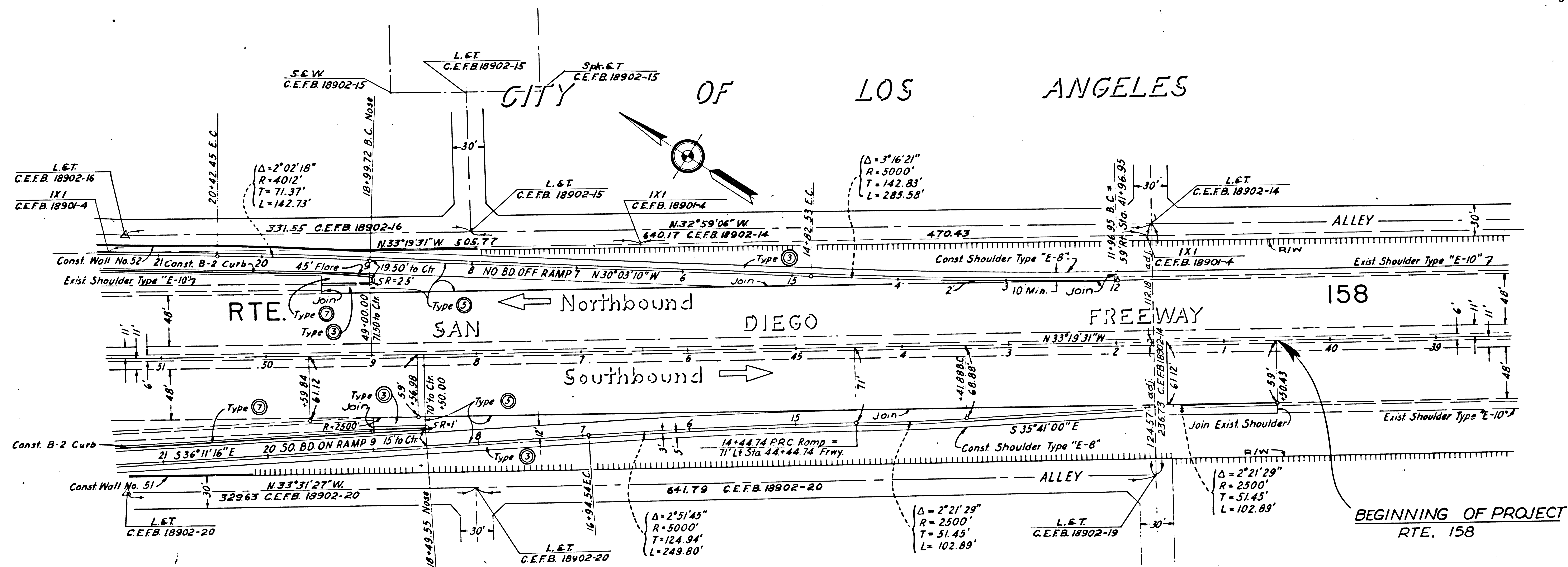
CITY OF LOS ANGELES



DIST	COUNTY	RD. NO.	POST MILES - TOTAL PROJECT	SHEET NO.	TOTAL SHEETS
7	LA	10	5.3-6.4	7	11

STATE OF CALIFORNIA
HIGHWAY TRANSPORTATION AGENCY
DEPARTMENT OF PUBLIC WORKS
DIVISION OF HIGHWAYS
MONUMENTATION MAP
No. MF-2067-7

Anthony
Deputy District Engineer



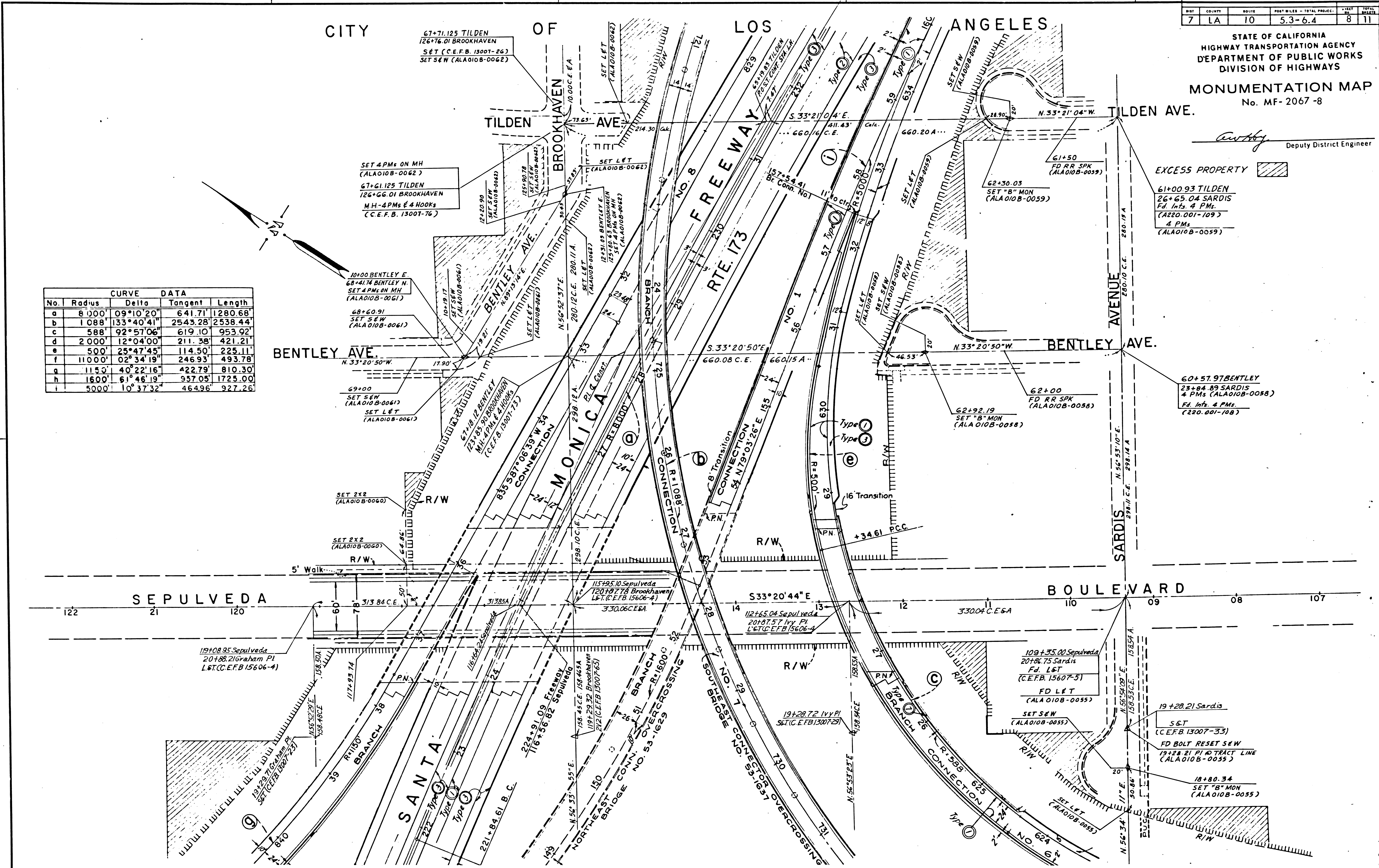
BEGINNING OF PROJECT
RTE. 158

SHEET	COUNTY	ROUTE	POST MILES - TOTAL PROJECT	SHEET NO.	TOTAL SHEETS
7	LA	10	5.3-6.4	8	11

STATE OF CALIFORNIA
HIGHWAY TRANSPORTATION AGENCY
DEPARTMENT OF PUBLIC WORKS
DIVISION OF HIGHWAYS
MONUMENTATION MAP
No. MF-2067-8

Anthony
Deputy District Engineer

No.	Radius	Delta	Tangent	Length
a	8 000'	09°10'20"	641.71	1280.68
b	1 088'	133°40'41"	2543.28	2538.44
c	588'	92°57'06"	619.10	953.92
d	2 000'	12°04'00"	211.38	421.21
e	500'	25°47'45"	114.50	225.11
f	11 000'	02°34'19"	246.93	493.78
g	115.0'	40°22'16"	422.79	810.30
h	1600'	61°46'19"	937.05	1725.00
i	5000'	10°37'32"	464.96	927.26



EXCESS PROPERTY

61+00.93 TILDEN
26+65.04 SARDIS
Fd. Ints. & P.Ms.
(AZ20-001-109)
4 P.Ms.
(ALA010B-0059)

60+51.97 BENTLEY
23+84.89 SARDIS
4 P.Ms. (ALA010B-0058)
Fd. Ints. & P.Ms.
(220-001-108)

109+35.01 Sepulveda
20+84.75 Sardis
Fd. L&T
(C.E.F.B. 15607-3)
FD L&T
(ALA010B-0055)
SET SEW
(ALA010B-0055)

19+28.21 Sardis
S&T
(C.E.F.B. 13007-33)
FD BOLT RESET SEW
(19+28.21) PI & TRACT LINE
(ALA010B-0055)

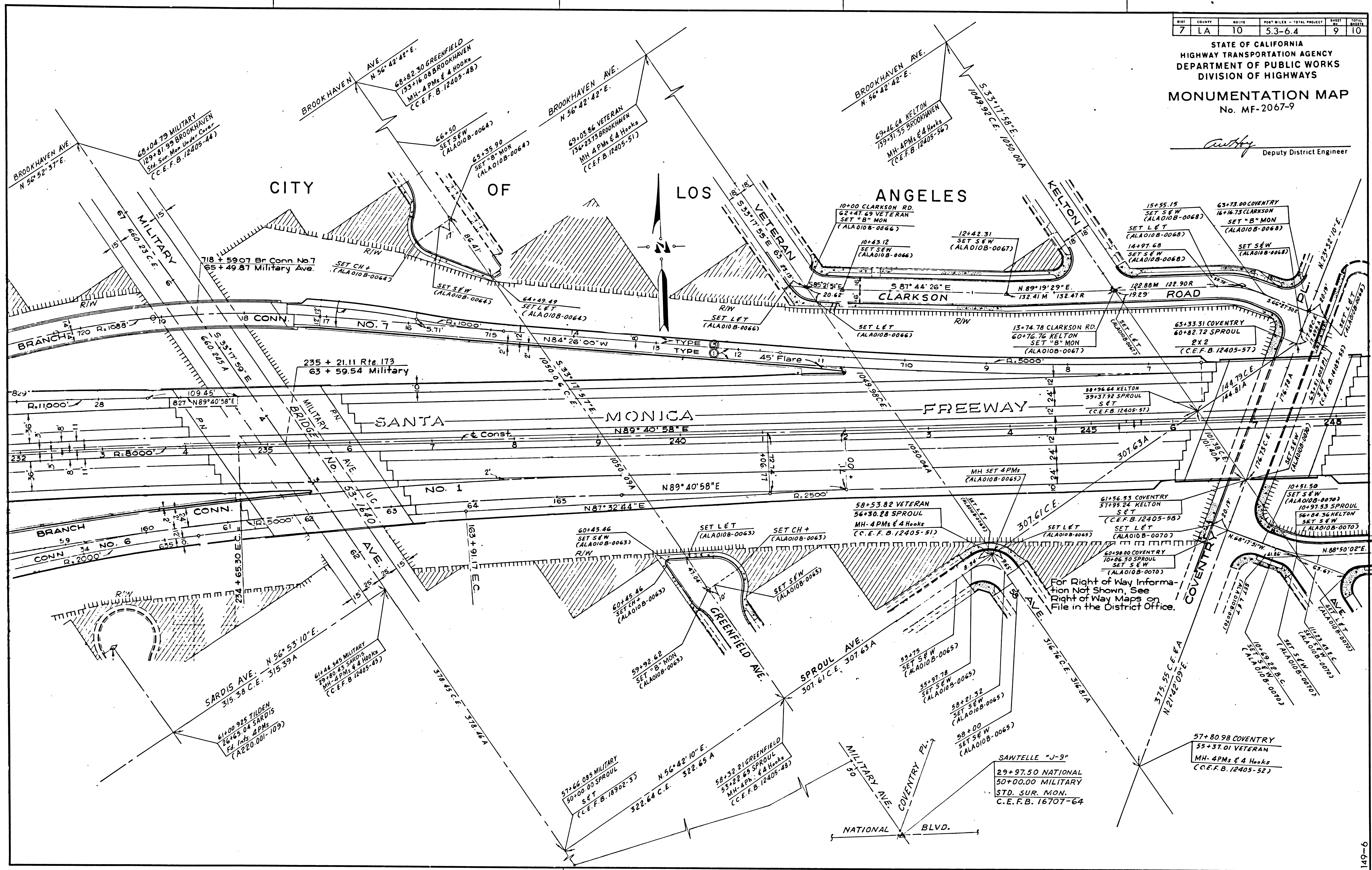
18+80.34
SET "B" MON
(ALA010B-0055)

SHEET	COUNTY	ROUTE	POST MILES - TOTAL PROJECT	SHEET NO.	TOTAL SHEETS
7	LA	10	5.3-6.4	9	10

STATE OF CALIFORNIA
HIGHWAY TRANSPORTATION AGENCY
DEPARTMENT OF PUBLIC WORKS
DIVISION OF HIGHWAYS

MONUMENTATION MAP
No. MF-2067-9

Authy
Deputy District Engineer



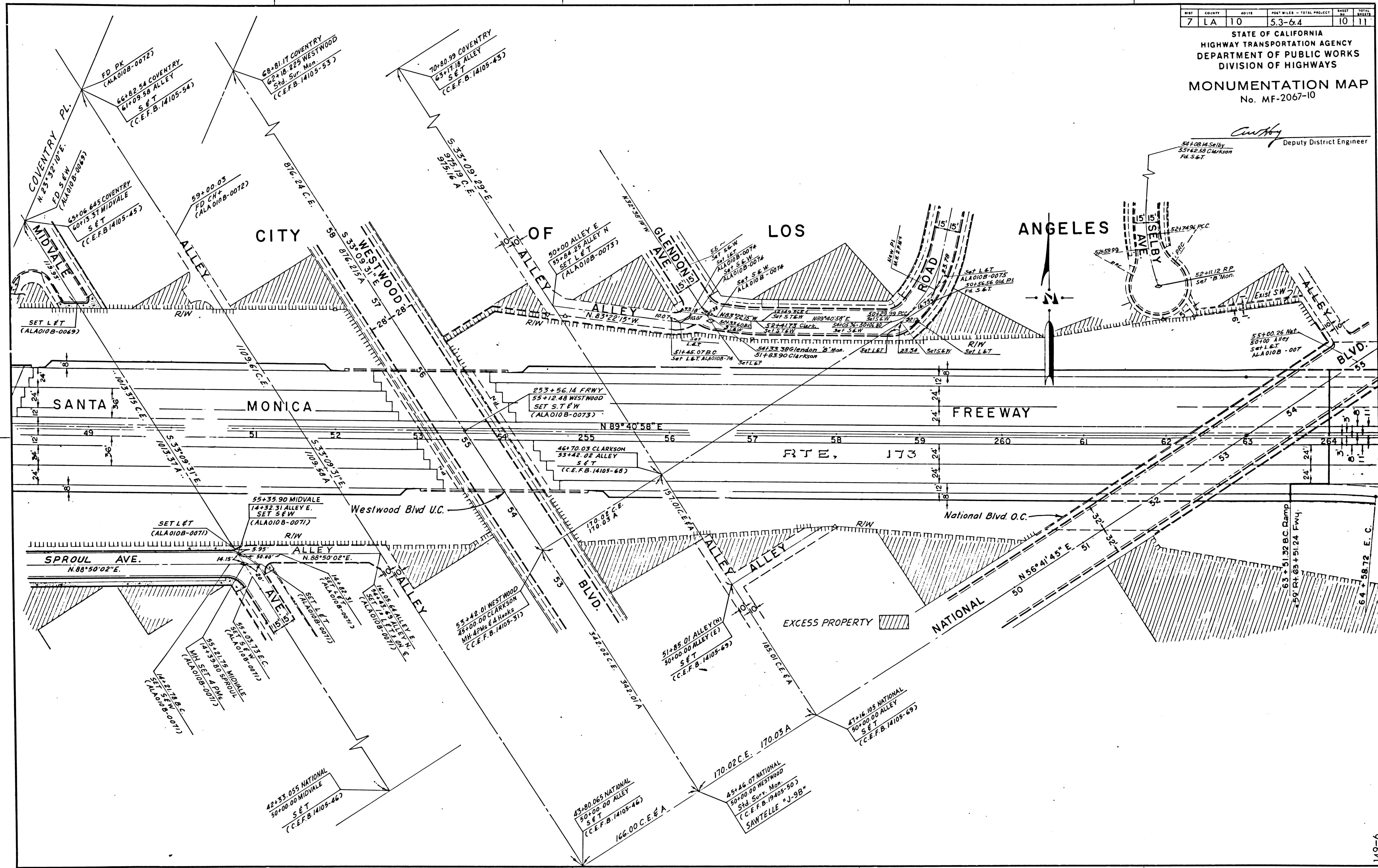
For Right of Way Information Not Shown, See Right of Way Maps on File in the District Office.

DIST	COUNTY	ROUTE	POST MILES - TOTAL PROJECT	SHEET	TOTAL
7	LA	10	5.3-6.4	10	11

STATE OF CALIFORNIA
HIGHWAY TRANSPORTATION AGENCY
DEPARTMENT OF PUBLIC WORKS
DIVISION OF HIGHWAYS

MONUMENTATION MAP
No. MF-2067-10

Curtis
Deputy District Engineer



149-6

