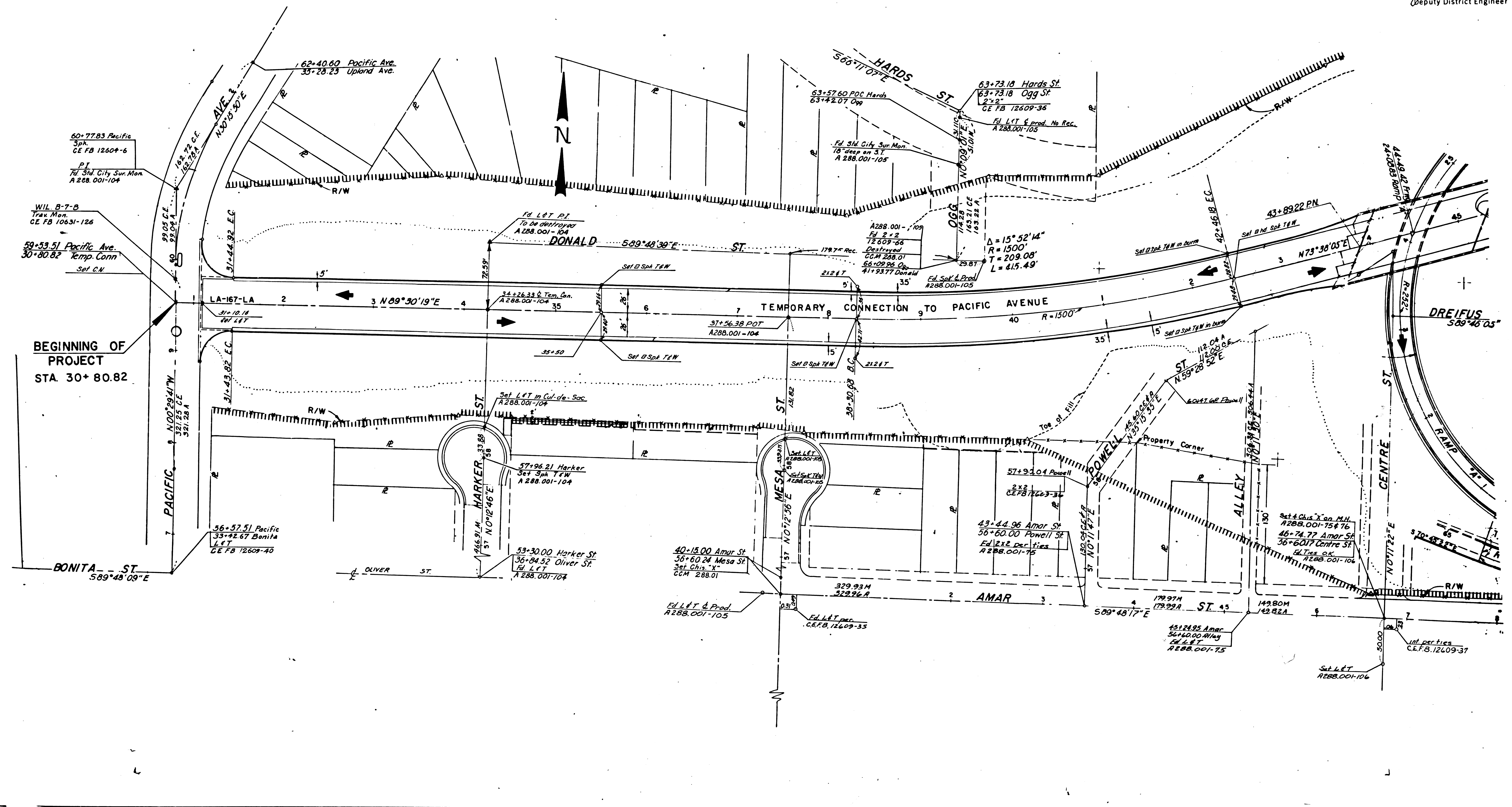


DIST	COUNTY	ROUTE	POST MILES - TOTAL PROJECT	SHEET NO.	TOTAL SHEETS
7	LA	77	0.7-2.1	1	4

STATE OF CALIFORNIA  
HIGHWAY TRANSPORTATION AGENCY  
DEPARTMENT OF PUBLIC WORKS  
DIVISION OF HIGHWAYS  
MONUMENTATION MAP  
No. MF-2105-1

*C. W. Hays*

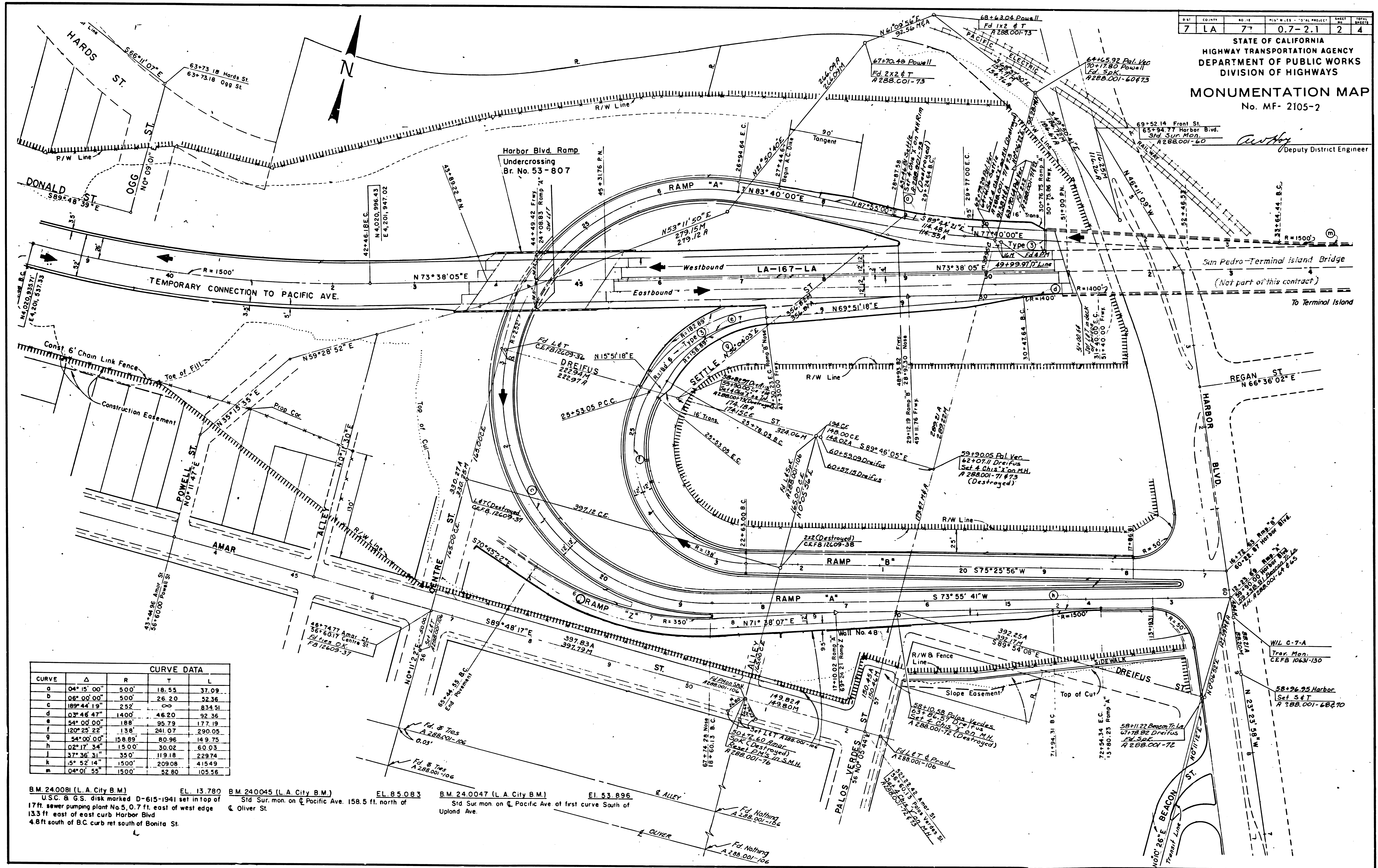
Deputy District Engineer



7	LA	77	0.7-2.1	2	4
---	----	----	---------	---	---

STATE OF CALIFORNIA  
HIGHWAY TRANSPORTATION AGENCY  
DEPARTMENT OF PUBLIC WORKS  
DIVISION OF HIGHWAYS  
**MONUMENTATION MAP**  
No. MF-2105-2

Deputy District Engineer



CURVE DATA				
CURVE	Δ	R	T	L
a	04° 15' 00"	500'	18.55	37.09
b	08° 00' 00"	500'	26.20	52.36
c	189° 44' 19"	252'	∞	834.51
d	03° 46' 47"	1400'	46.20	92.36
e	54° 00' 00"	188'	95.79	177.19
f	120° 25' 22"	138'	241.07	290.05
g	54° 00' 00"	158.89'	80.96	149.75
h	02° 17' 34"	15.00'	30.02	60.03
j	37° 36' 31"	350'	119.18	229.74
k	15° 52' 14"	1500'	209.08	415.49
m	04° 01' 55"	1500'	52.80	105.56

B.M. 240081 (L.A. City B.M.) EL. 13.780  
U.S.C. & G.S. disk marked D-615-1941 set in top of  
17ft. sewer pumping plant No. 5, 0.7 ft. east of west edge  
13.3 ft. east of east curb Harbor Blvd  
4.8 ft. south of B.C. curb ret south of Bonita St.

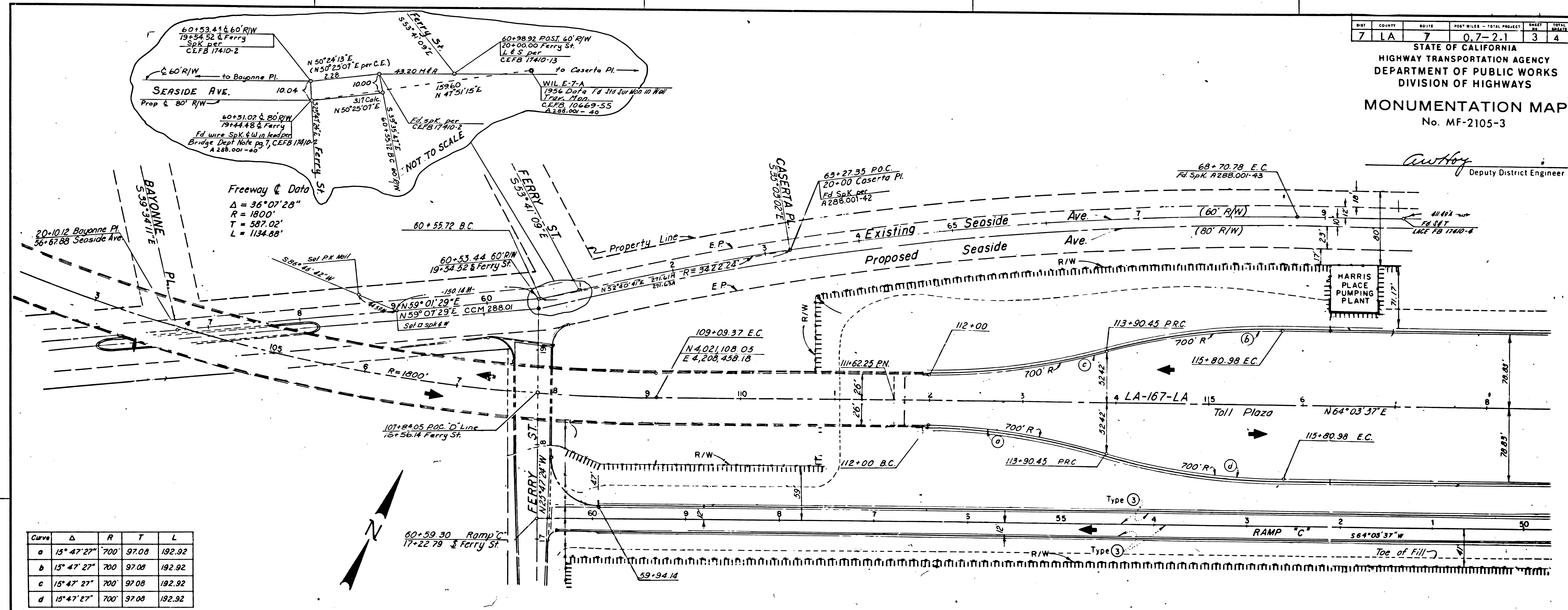
B.M. 240045 (L.A. City B.M.) EL. 85.083  
Std. Sur. mon. on Pacific Ave. 158.5 ft. north of  
Oliver St.

B.M. 240047 (L.A. City B.M.) EL. 53.896  
Std. Sur. mon. on Pacific Ave. at first curve South of  
Upland Ave.

DIST	COUNTY	ROUTE	POST MILES - TOTAL PROJECT	SHEET	TOTAL SHEETS
7	LA	7	0.7-2.1	3	4

STATE OF CALIFORNIA  
HIGHWAY TRANSPORTATION AGENCY  
DEPARTMENT OF PUBLIC WORKS  
DIVISION OF HIGHWAYS  
MONUMENTATION MAP  
No. MF-2105-3

*Anthony*  
Deputy District Engineer



Curve	Δ	R	T	L
a	15° 47' 27"	700'	97.08	192.92
b	15° 47' 27"	700'	97.08	192.92
c	15° 47' 27"	700'	97.08	192.92
d	15° 47' 27"	700'	97.08	192.92

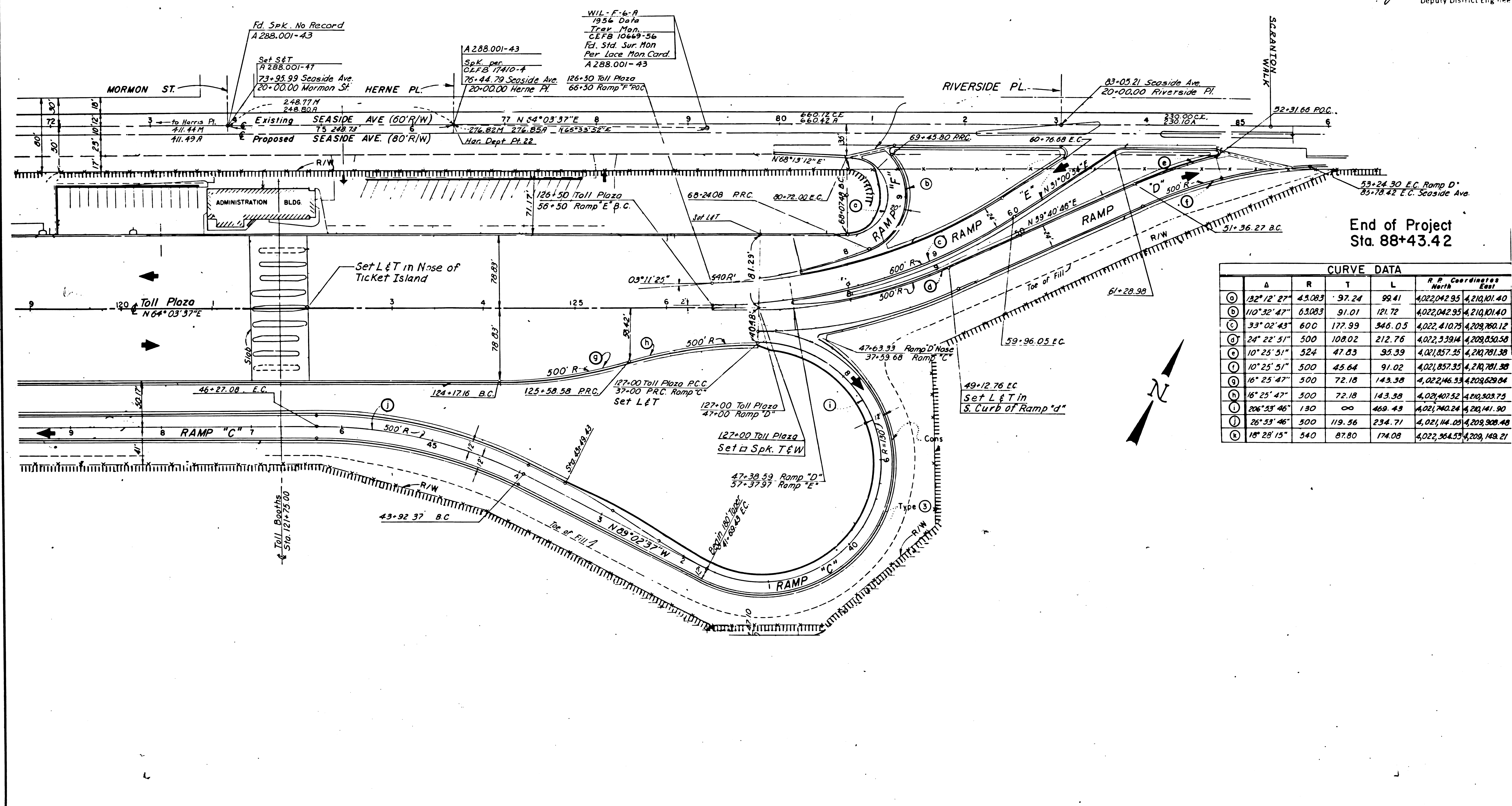
- B.M. No. 24 0233 (L.A. City B.M.) Elev. 5.905  
Cut Spike in Cem. N.E. Cor. 32' N. of Centerline  
Dock St 60 feet E. of Center Line Ferry St. 1958
  - B.M. No. 24 0235 (L.A. City B.M.) Elev. 11.816  
Std. trav. mon. Wil. E-7 25.2 ft. S. of N. edge  
of pavement, Seaside Ave. 166.7 ft. W. of  
Altoona Pl. 1958.
  - B.M. No. 24 0237 (L.A. City B.M.) Elev. 9.262  
U.S.C. & G.S. Disk 18-1935 on cmt. 3 M.H. 5 ft.  
N.W. of South Edge of Pavement in Dock St.  
300 ft. S.W. of Altoona St. 135 ft. S.E. of Berth  
228-D-E. 1958.
  - B.M. No. 240255 (L.A. City B.M.) Elev. 8.018  
Std. trav. mon. Wil. E-7A, 7.9 ft. S. of N. edge  
of pavement on Seaside Ave, 160 ± E. of  
Ferry St. 1958.
  - B.M. No. 240257 (L.A. City B.M.) Elev. 11.878  
U.S.C. & G.S. Disk K-97-1937 N. face of sewer  
pumping plant 55 ft. S. of center line Seaside  
Ave. 63 ft. W. of center line prod. Harris Pl. 1958
- BMS BASED ON MEAN SEA LEVEL DATUM

DIST.	COUNTY	ROUTE	POST MILES - TOTAL PROJECT	SHEET NO.	TOTAL SHEETS
7	LA	7	0.7-2.1	4	4

STATE OF CALIFORNIA  
HIGHWAY TRANSPORTATION AGENCY  
DEPARTMENT OF PUBLIC WORKS  
DIVISION OF HIGHWAYS

MONUMENTATION MAP  
No. MF-2105-4

*Authey*  
Deputy District Engineer



End of Project Sta. 88+43.42

CURVE DATA					
Station	Δ	R	T	L	N. P. Coordinates
					North East
①	132° 12' 27"	43.083	97.24	99.41	4,022,042.95 4,210,101.40
②	110° 32' 47"	63.083	91.01	121.72	4,022,042.95 4,210,101.40
③	33° 02' 43"	600	177.99	346.05	4,022,410.79 4,209,850.12
④	24° 22' 51"	500	108.02	212.76	4,022,339.14 4,209,850.58
⑤	10° 25' 51"	524	47.83	95.39	4,021,857.35 4,210,781.38
⑥	10° 25' 51"	500	45.64	91.02	4,021,857.35 4,210,781.38
⑦	16° 25' 47"	500	72.18	143.38	4,022,146.33 4,209,629.04
⑧	16° 25' 47"	500	72.18	143.38	4,021,407.52 4,210,303.75
⑨	206° 53' 46"	130	00	469.43	4,021,740.24 4,210,141.90
⑩	26° 53' 46"	500	119.56	234.71	4,021,114.05 4,209,908.48
⑪	18° 28' 15"	540	87.80	174.08	4,022,364.53 4,209,149.21