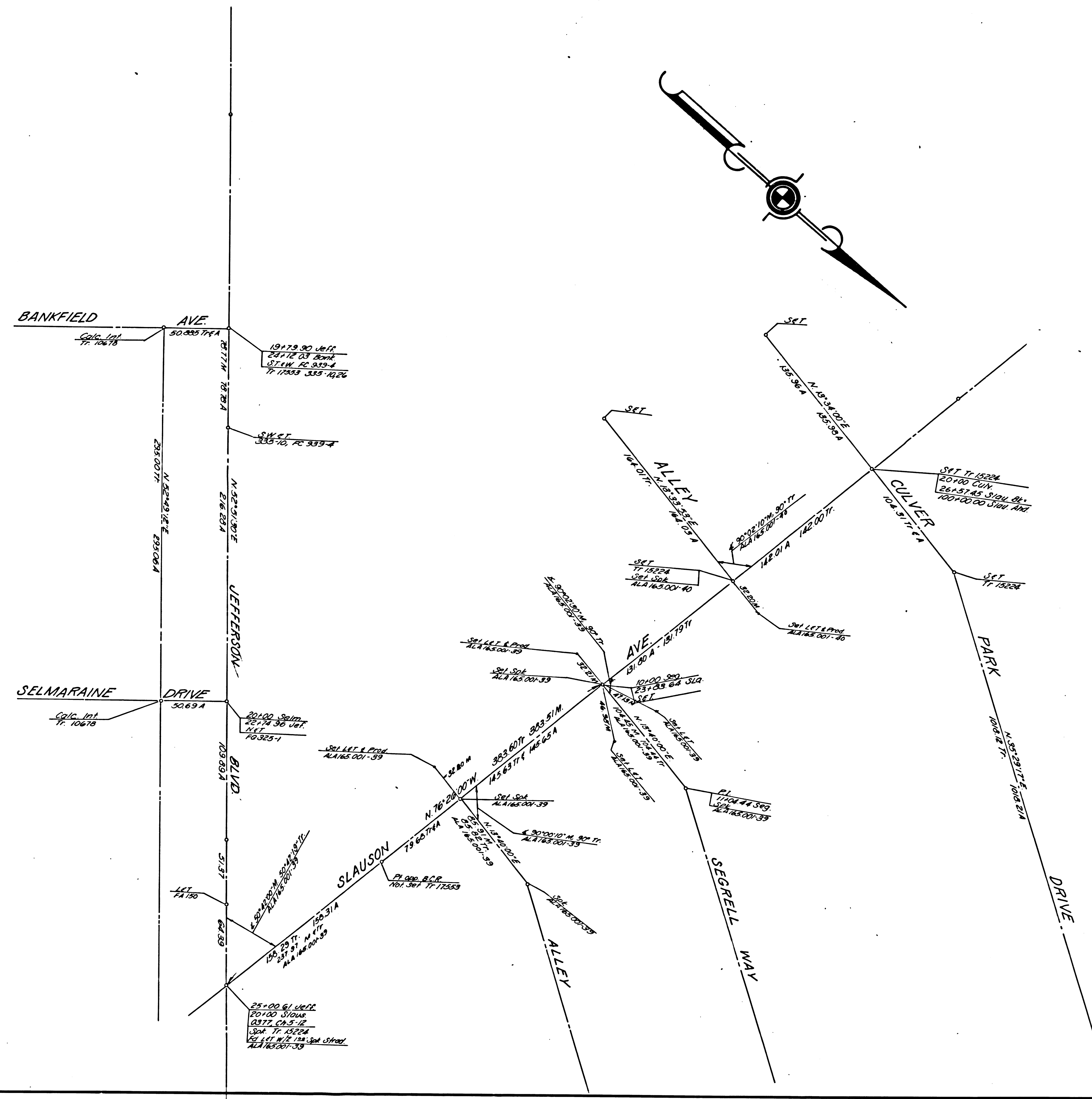


SHEET NO.	COUNTY	SECTION	POST MILES - TOTAL PROJECT	SHEET NO.	TOTAL SHEETS
7	LA	405	26.04-27.96	1	9

STATE OF CALIFORNIA  
HIGHWAY TRANSPORTATION AGENCY  
DEPARTMENT OF PUBLIC WORKS  
DIVISION OF HIGHWAYS  
**MONUMENTATION MAP**  
No. MF-1928-1

*awh*  
Deputy District Engineer

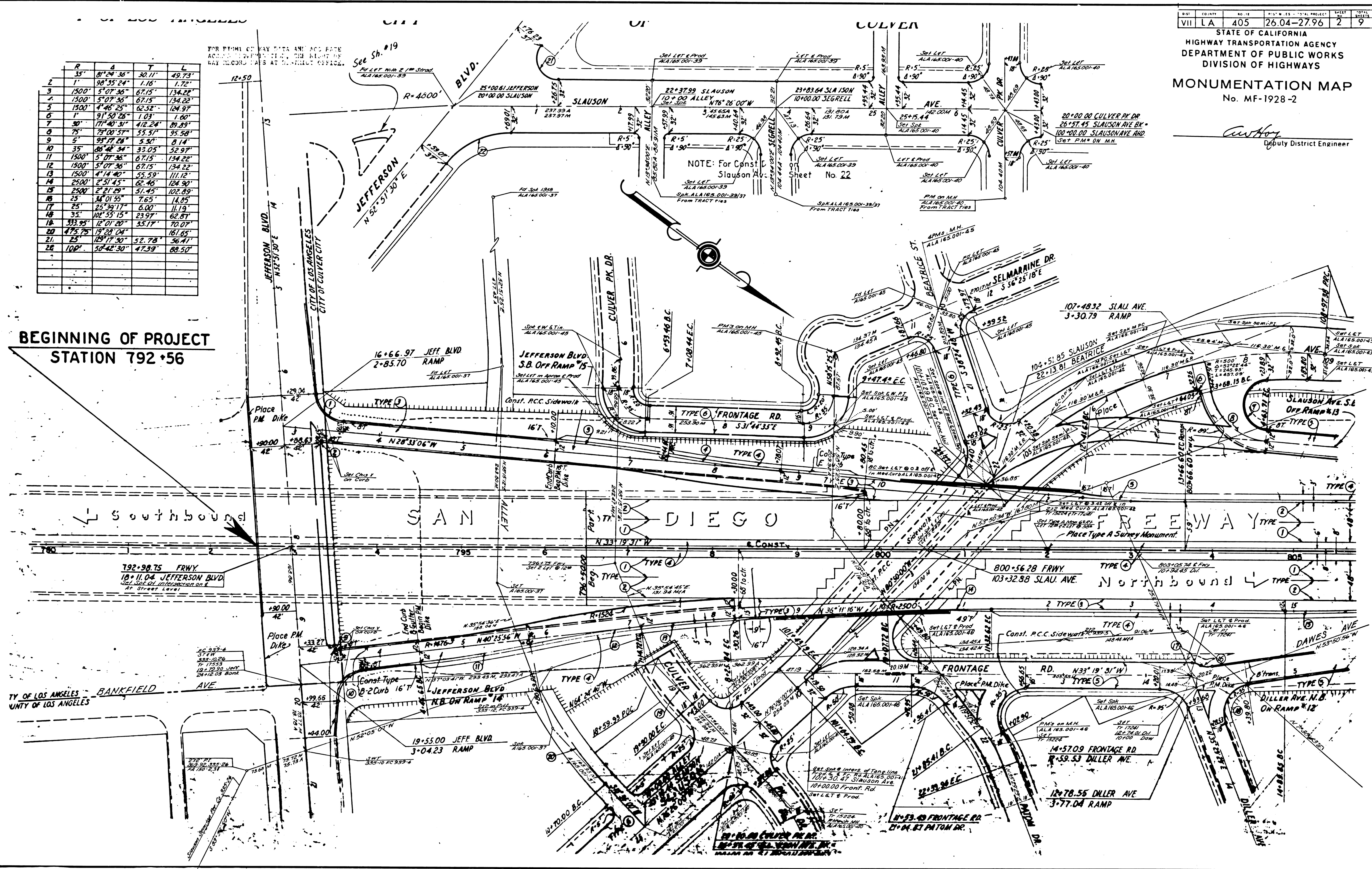


MONUMENTATION MAP  
No. MF-1928-2

*Anthony*  
Deputy District Engineer

R	A	T	L
1	35'	81°24'36"	49.73'
2	1'	90°35'24"	1.72'
3	1500'	5°07'36"	67.15'
4	1500'	5°07'36"	67.15'
5	1500'	4°46'25"	62.52'
6	1'	91°50'25"	1.03'
7	30'	171°40'31"	412.24'
8	75'	171°40'31"	53.37'
9	5'	87°17'24"	5.84'
10	35'	86°34'34"	33.05'
11	1500'	5°07'36"	67.15'
12	1500'	5°07'36"	67.15'
13	1500'	4°14'40"	55.59'
14	2500'	2°51'45"	62.46'
15	2500'	2°21'29"	51.45'
16	25'	34°01'55"	7.65'
17	25'	25°39'17"	6.00'
18	35'	102°55'15"	23.97'
19	333.95'	12°01'20"	35.17'
20	475.75'	19°24'04"	161.65'
21	25'	189°17'30"	52.78'
22	100'	58°42'30"	47.39'

FOR FINAL CURVE DATA AND AC DATA  
ACCORDING TO THE RIGHT OF  
WAY RECORDS AT DISTRICT OFFICE.



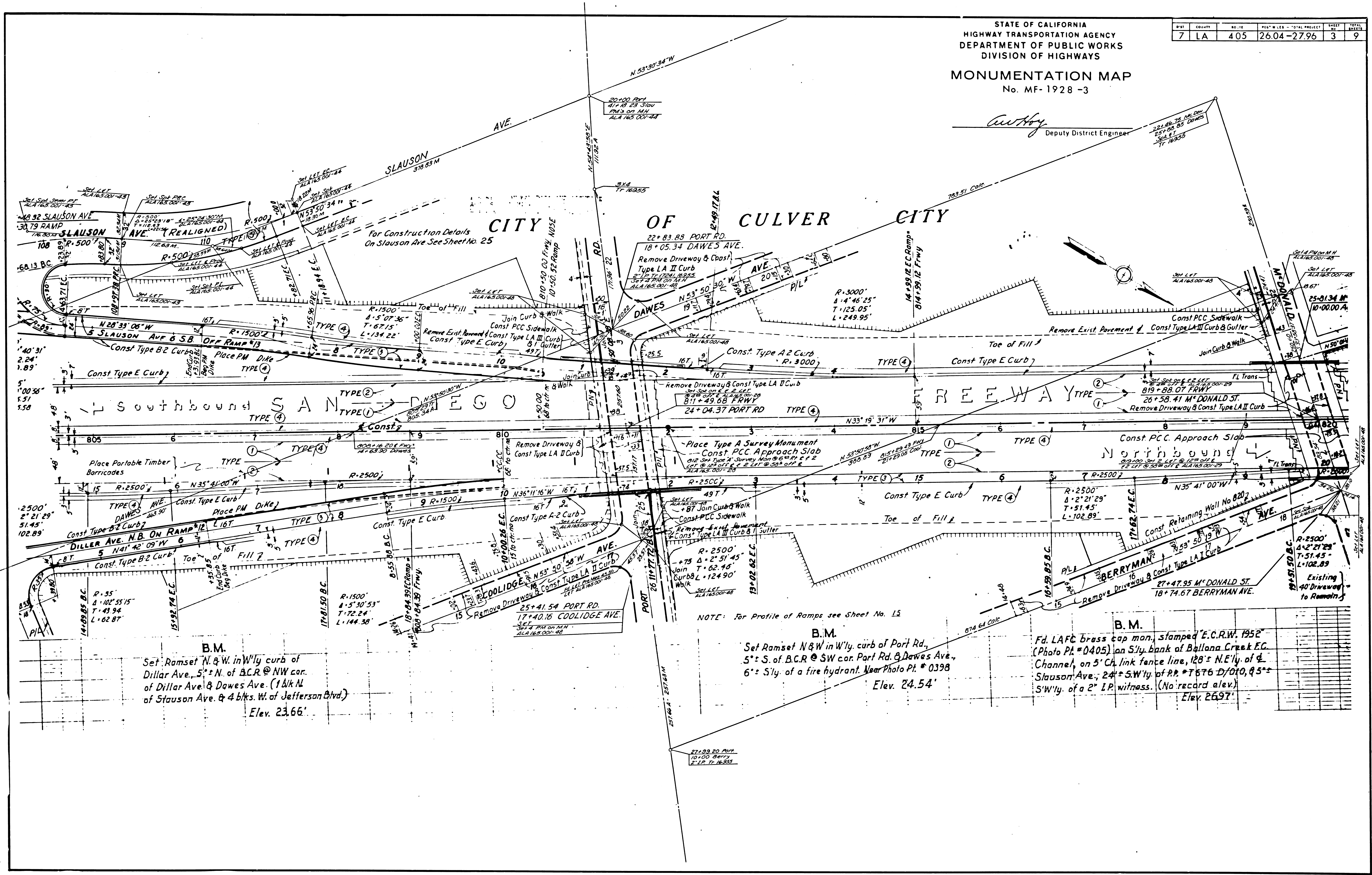
BEGINNING OF PROJECT  
STATION 792+56

STATE OF CALIFORNIA  
HIGHWAY TRANSPORTATION AGENCY  
DEPARTMENT OF PUBLIC WORKS  
DIVISION OF HIGHWAYS

**MONUMENTATION MAP**  
No. MF-1928-3

SHEET	COUNTY	NO. IN PROJECT	TOTAL PROJECT	SHEET NO.	TOTAL SHEETS
7	LA	405	26.04-27.96	3	9

*Curtis*  
Deputy District Engineer



**B.M.**  
Set Ramset N & W in W'ly curb of Dillier Ave, 5'± N. of B.C.R. @ NW cor. of Dillier Ave & Daves Ave. (1 blk N of Slauson Ave. & 4 blks. W. of Jefferson Blvd.)  
Elev. 23.66'

**B.M.**  
Set Ramset N & W in W'ly curb of Port Rd., 5'± S. of B.C.R. @ SW cor. Port Rd. & Daves Ave., 6'± S'ly. of a fire hydrant. Near Photo Pl. # 0398  
Elev. 24.54'

**B.M.**  
Fd. LAFc brass cap mon. stamped 'E.C.R.W. 1952' (Photo Pl. # 0405) on S'ly. bank of Ballona Creek EC Channel, on 5' Ch. link fence line, 128'± N.E'ly. of S. Slauson Ave.; 24'± S.W'ly. of R.R. # T 676 D/O 10, @ 5'± S.W'ly. of a 2" I.P. witness. (No record elev.)  
Elev. 26.97'

