

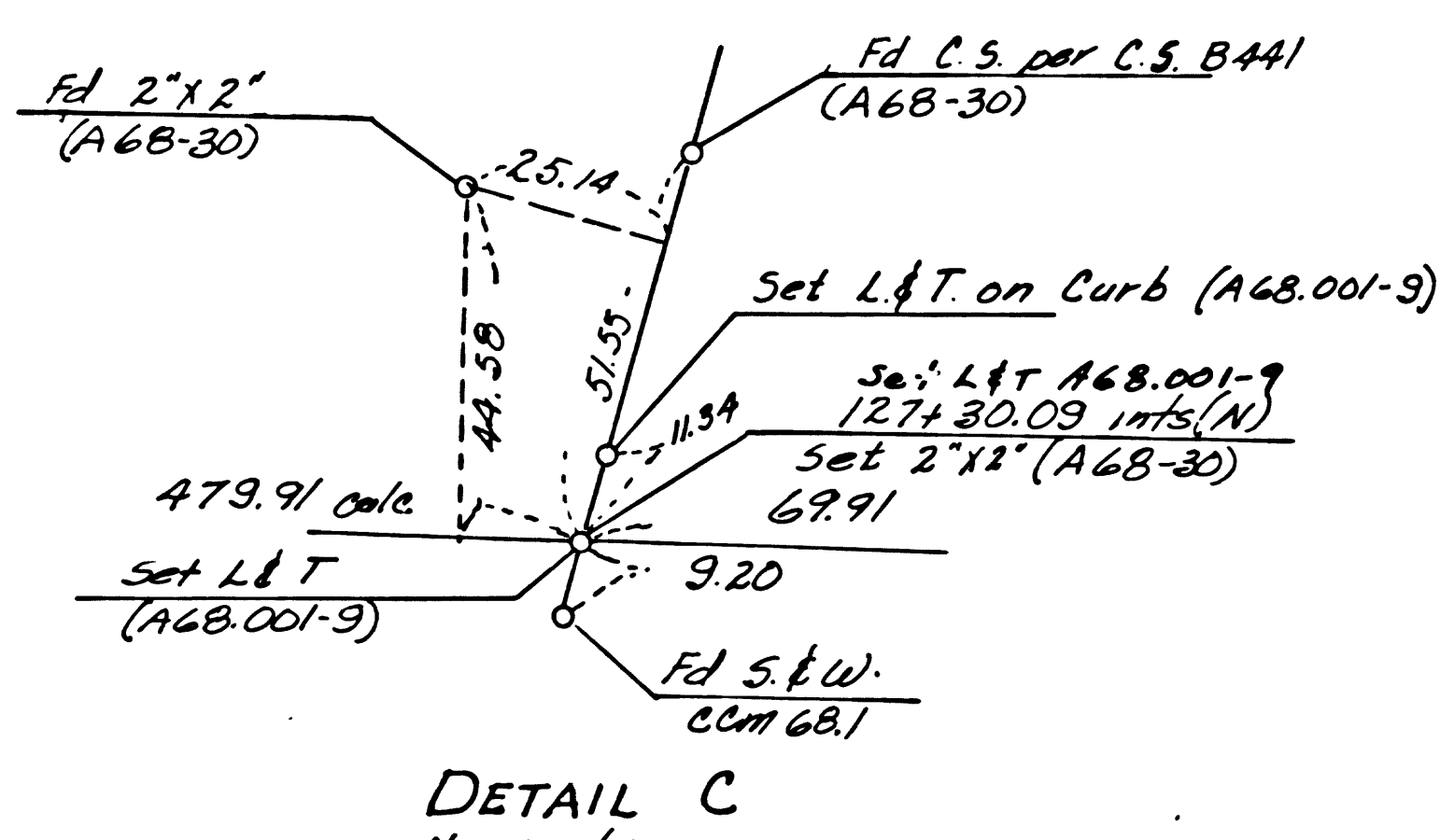
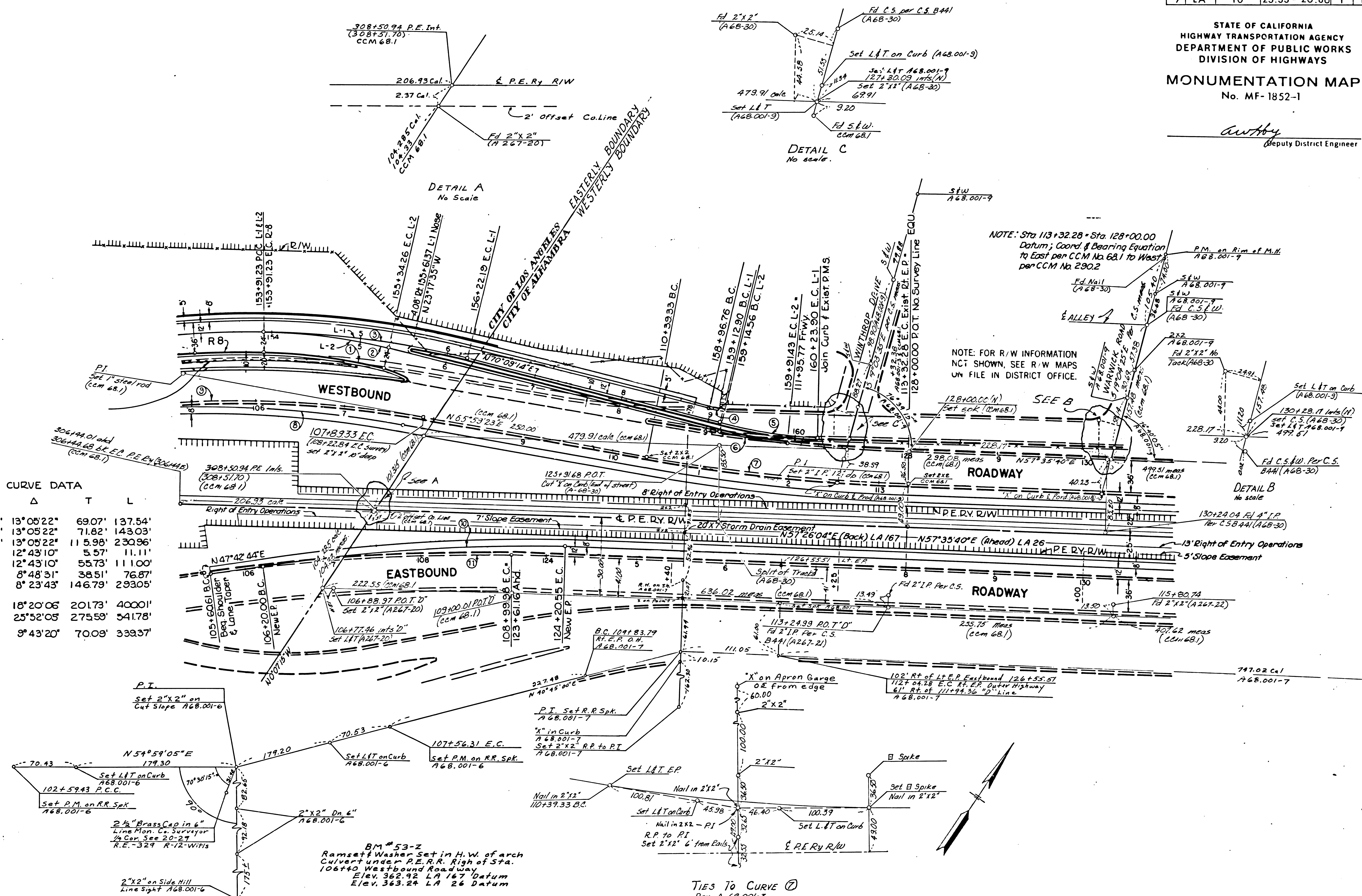
DIST	COUNTY	NO. IN	POST MILES - TOTAL PROJECT	SHEET	TOTAL
7	LA	10	23.33 - 26.86	1	19

STATE OF CALIFORNIA
HIGHWAY TRANSPORTATION AGENCY
DEPARTMENT OF PUBLIC WORKS
DIVISION OF HIGHWAYS
MONUMENTATION MAP
No. MF-1852-1

Authy
Deputy District Engineer

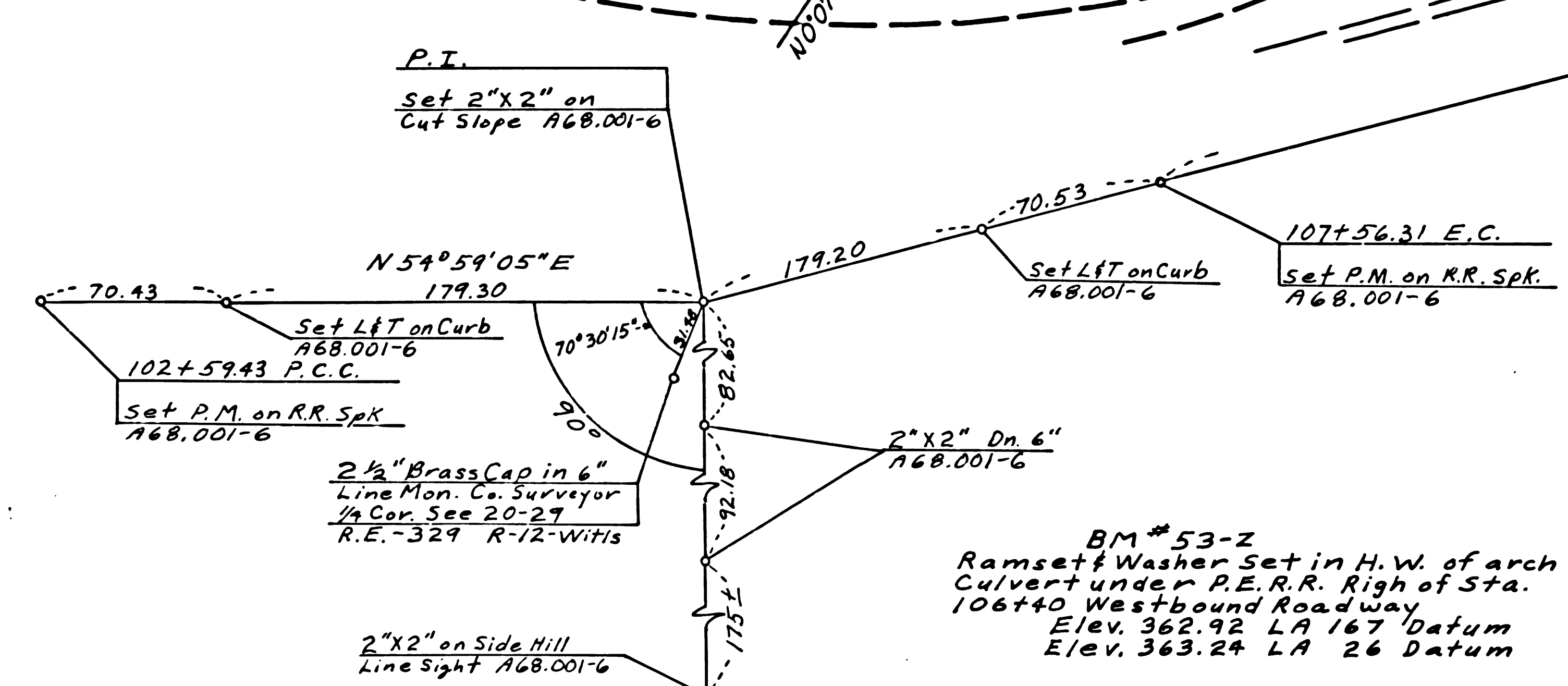
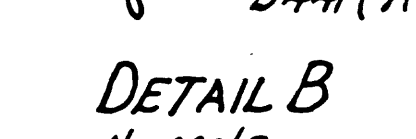
CURVE DATA

R	Δ	T	L
① 602.05'	13°05'22"	69.07'	137.54'
② 626.05'	13°05'22"	71.82'	143.03'
③ 1010.96'	13°05'22"	115.98'	230.96'
④ 50'	12°43'10"	5.57'	11.11'
⑤ 500'	12°43'10"	55.73'	111.00'
⑥ 500'	8°48'31"	38.51'	76.87'
⑦ 2000'	8°23'43"	146.79'	293.05'
⑧ 12.50'	18°20'06"	20.173'	40.001'
⑨ 1200'	25°52'05"	275.59'	541.78'
⑩ 2000'	3°43'20"	70.09'	339.37'



NOTE: Sta 113+32.28 - Sta. 128+00.00
Datum; Coord. & Bearing Equation
to East per CCM No. 68.1 to West
per CCM No. 290.2

NOTE: FOR R/W INFORMATION
NOT SHOWN, SEE R/W MAPS
ON FILE IN DISTRICT OFFICE.

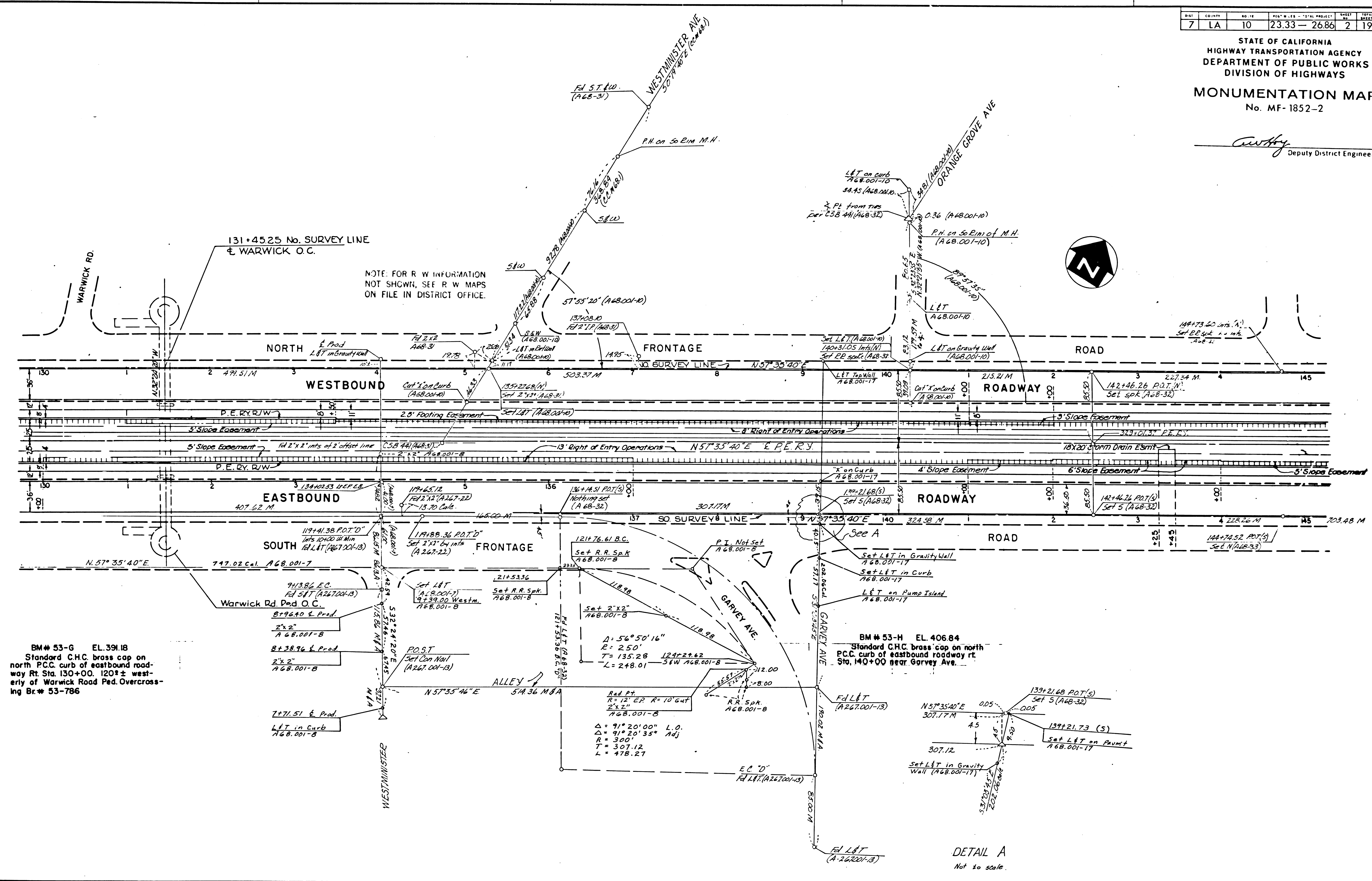


TIES TO CURVE ⑦
Per A 68.001-3

DATE	COUNTY	NO. 12	NO. 13	TOTAL PROJECT	SHEET NO.	TOTAL SHEETS
7	LA	10	23.33 - 26.86	2	19	

STATE OF CALIFORNIA
HIGHWAY TRANSPORTATION AGENCY
DEPARTMENT OF PUBLIC WORKS
DIVISION OF HIGHWAYS
MONUMENTATION MAP
No. MF-1852-2

Curry
Deputy District Engineer



BM# 53-G EL. 391.18
Standard C.H.C. brass cap on
north P.C.C. curb of eastbound road-
way Rt. Sta. 130+00. 120'± west-
erly of Warwick Road Ped. Overcross-
ing Br# 53-786

BM# 53-H EL. 406.84
Standard C.H.C. brass cap on north
P.C.C. curb of eastbound roadway rt.
Sta. 140+00 near Garvey Ave.

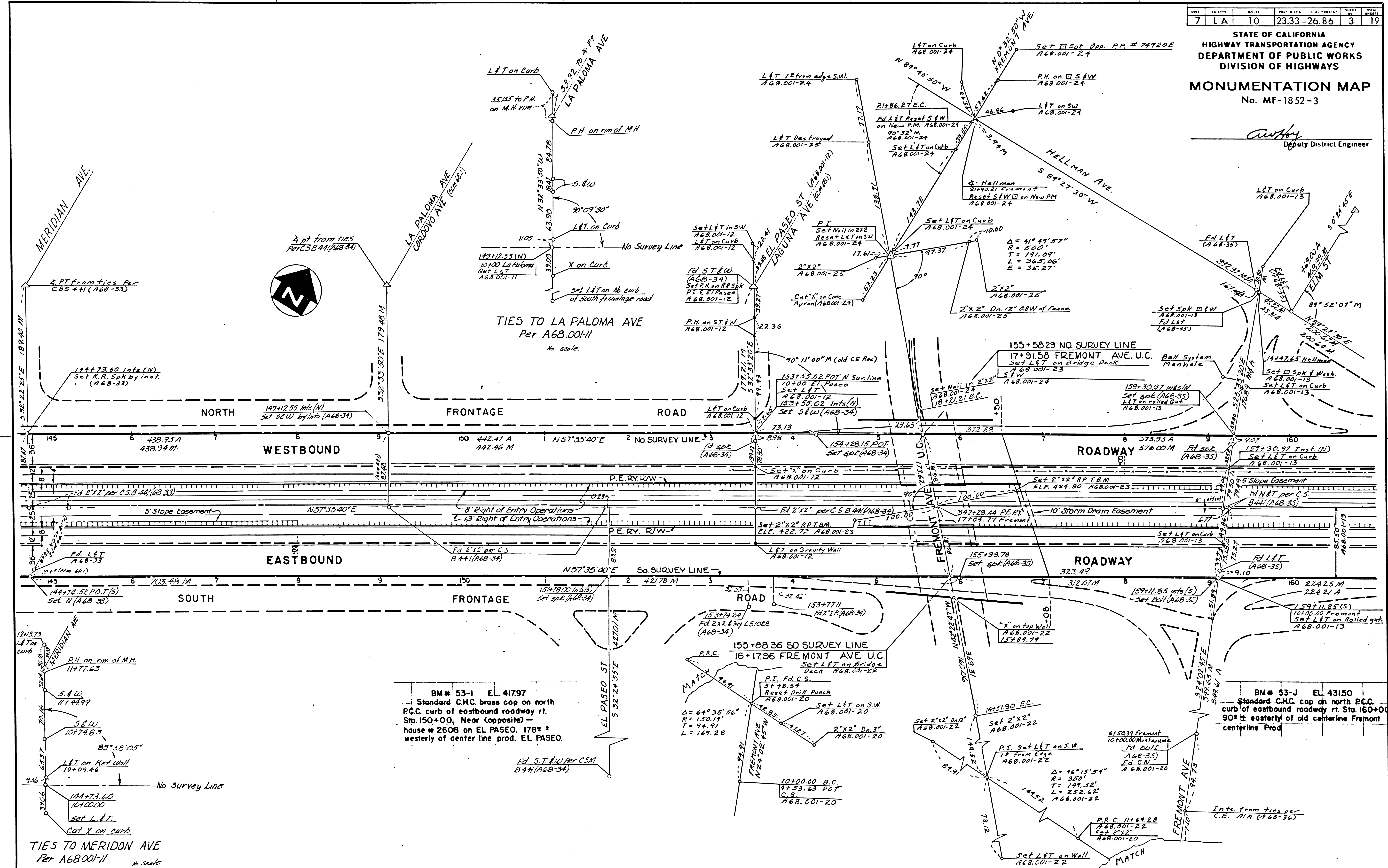
DETAIL A
Not to scale.

133-11

DATE	COUNTY	NO. IN	NO. OF SHEETS	TOTAL SHEETS
7	LA	10	23.33-26.86	3

STATE OF CALIFORNIA
HIGHWAY TRANSPORTATION AGENCY
DEPARTMENT OF PUBLIC WORKS
DIVISION OF HIGHWAYS
MONUMENTATION MAP
No. MF-1852-3

Authy
Deputy District Engineer



BM# 53-1 EL. 41797
Standard C.H.C. brass cap on north
P.C.C. curb of eastbound roadway rt.
Sta. 150+00, Near Opposite) —
house # 2608 on EL PASEO. 178° *
westerly of center line prod. EL PASEO.

BM# 53-J EL. 43150
Standard C.H.C. cap on north P.C.C.
curb of eastbound roadway rt. Sta. 160+00
90° ± easterly of old centerline Fremont
centerline Prod.