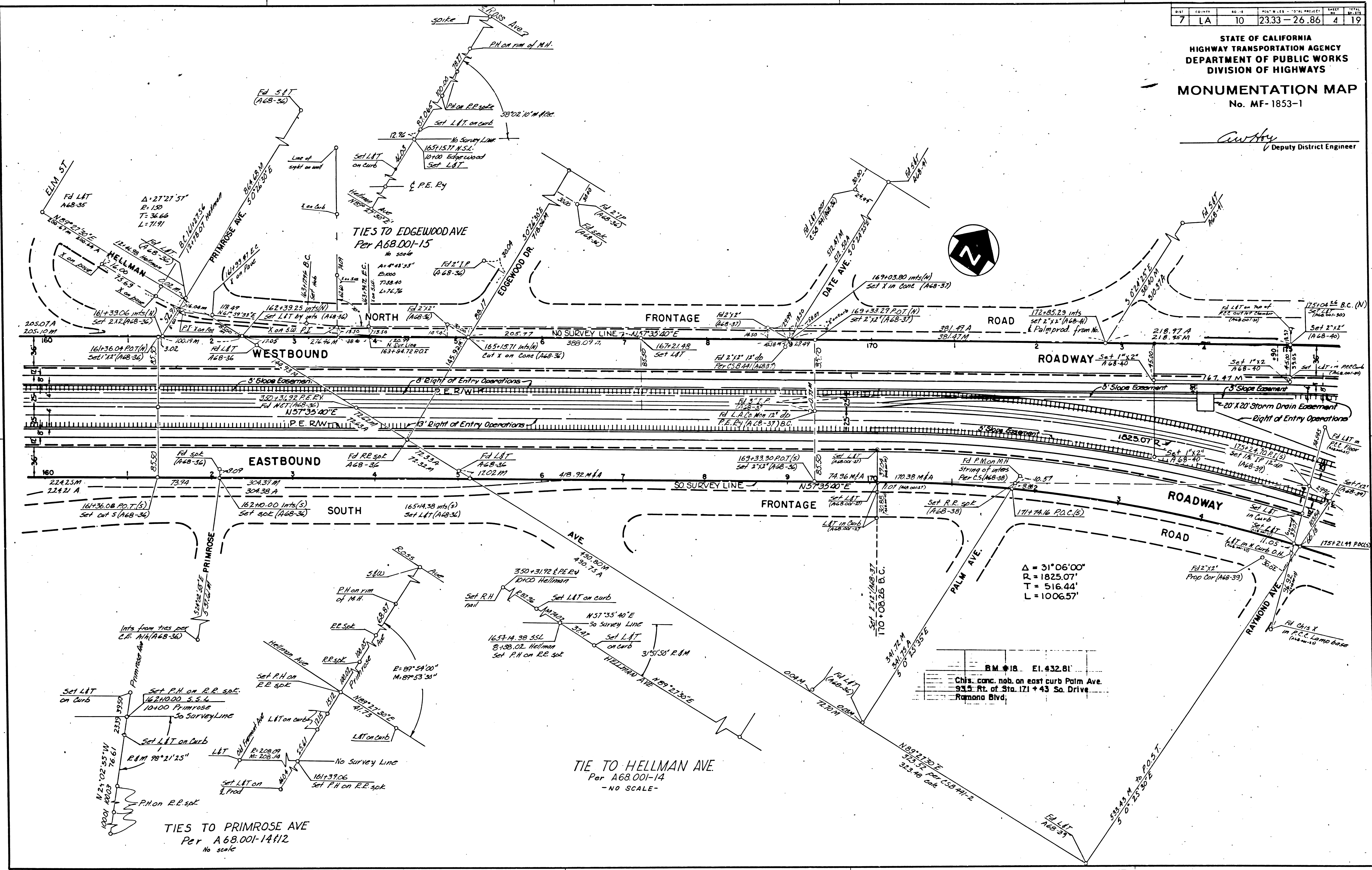


SHEET	NO. OF SHEETS	TOTAL PROJECT	DATE
7	10	23.33-26.86	4 19

STATE OF CALIFORNIA  
HIGHWAY TRANSPORTATION AGENCY  
DEPARTMENT OF PUBLIC WORKS  
DIVISION OF HIGHWAYS  
**MONUMENTATION MAP**  
No. MF-1853-1

*C. W. H. H.*  
Deputy District Engineer

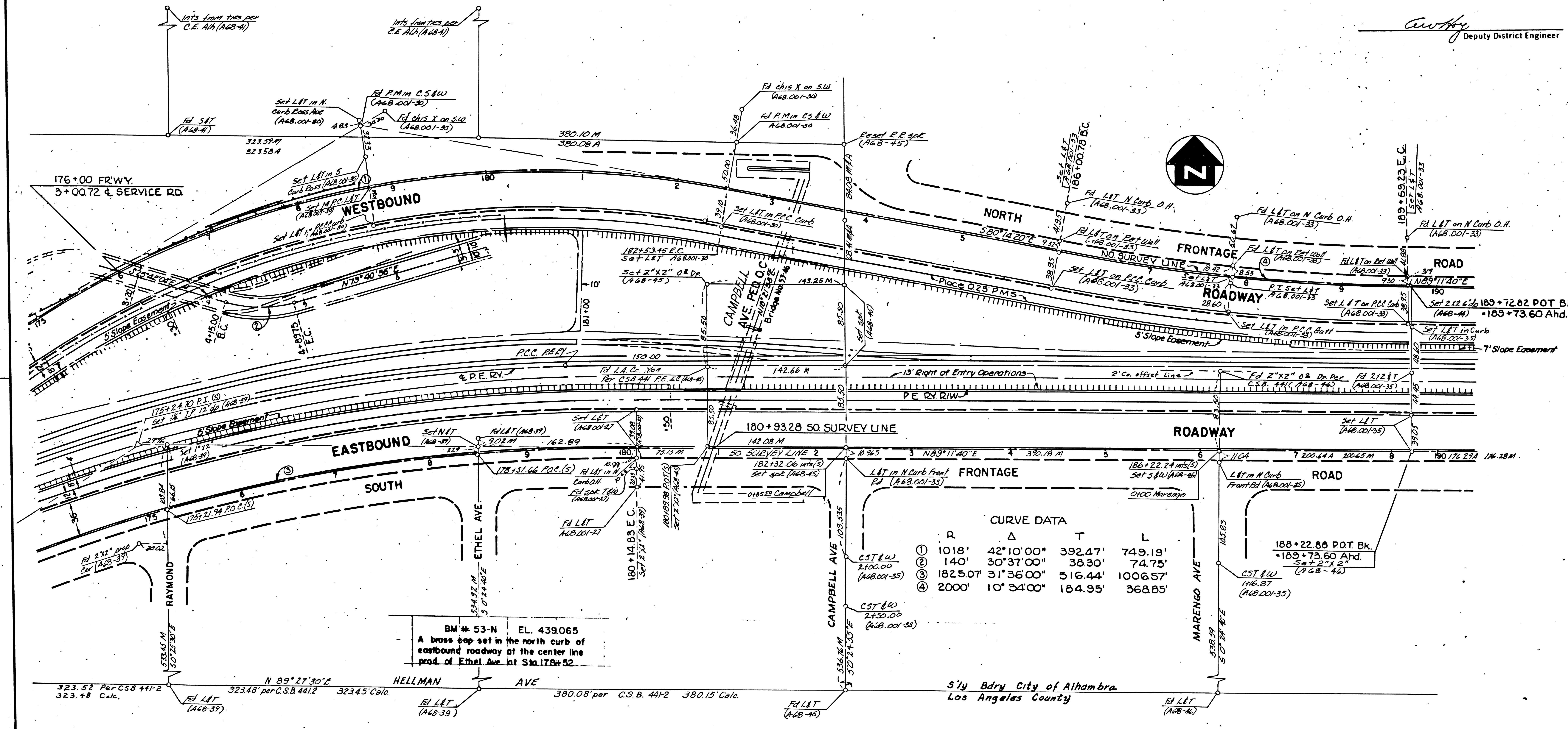


133-11

SHEET	COUNTY	NO. IN	POST MILES - TOTAL PROJECT	SHEET	TOTAL SHEETS
7	LA	10	23.33-26.86	5	19

STATE OF CALIFORNIA  
HIGHWAY TRANSPORTATION AGENCY  
DEPARTMENT OF PUBLIC WORKS  
DIVISION OF HIGHWAYS  
**MONUMENTATION MAP**  
No. MF-1853-2

*Anthony*  
Deputy District Engineer



CURVE DATA

	R	Δ	T	L
①	1018'	42°10'00"	392.47'	749.19'
②	140'	30°37'00"	38.30'	74.75'
③	1825.07'	31°36'00"	516.44'	1006.57'
④	2000'	10°34'00"	184.95'	368.85'

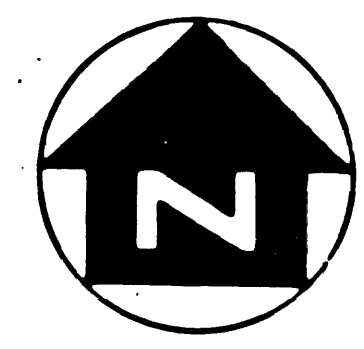
BM # 53-N EL. 439.065  
A brass cap set in the north curb of eastbound roadway at the center line prod. of Ethel Ave. at Sta. 178+52

S'y Bdry City of Alhambra  
Los Angeles County

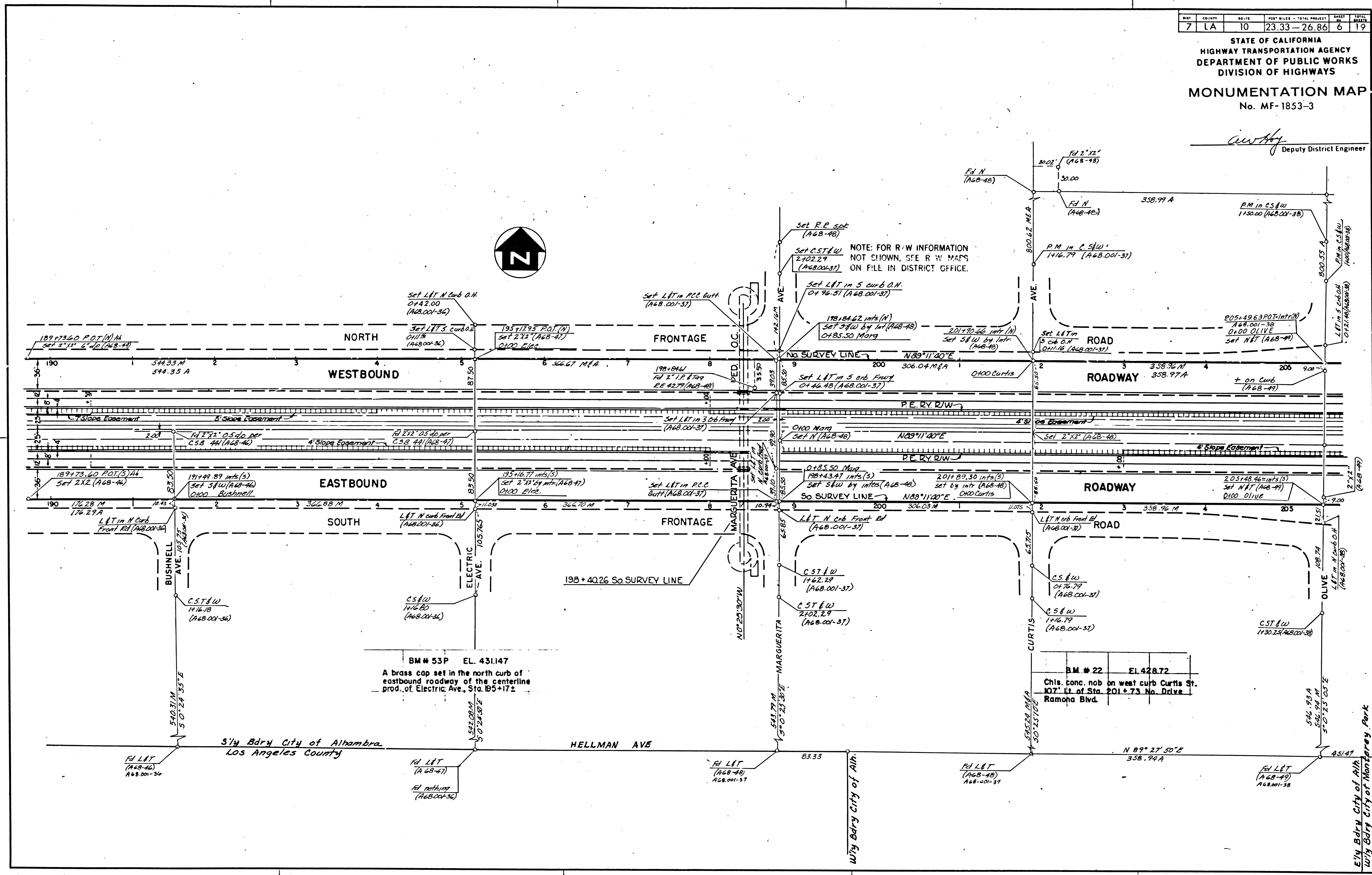
SHEET NO.	COUNTY	SECTION	POST MILES - TOTAL PROJECT	SHEET TOTAL
7	LA	10	23.33 - 26.86	6
				19

STATE OF CALIFORNIA  
HIGHWAY TRANSPORTATION AGENCY  
DEPARTMENT OF PUBLIC WORKS  
DIVISION OF HIGHWAYS  
**MONUMENTATION MAP**  
No. MF-1853-3

*Anthony*  
Deputy District Engineer



NOTE: FOR R/W INFORMATION  
NOT SHOWN, SEE R/W MAPS  
ON FILE IN DISTRICT OFFICE.



BM # 53P EL. 431.147  
A brass cap set in the north curb of  
eastbound roadway of the centerline  
prod. of Electric Ave., Sta. 195+172

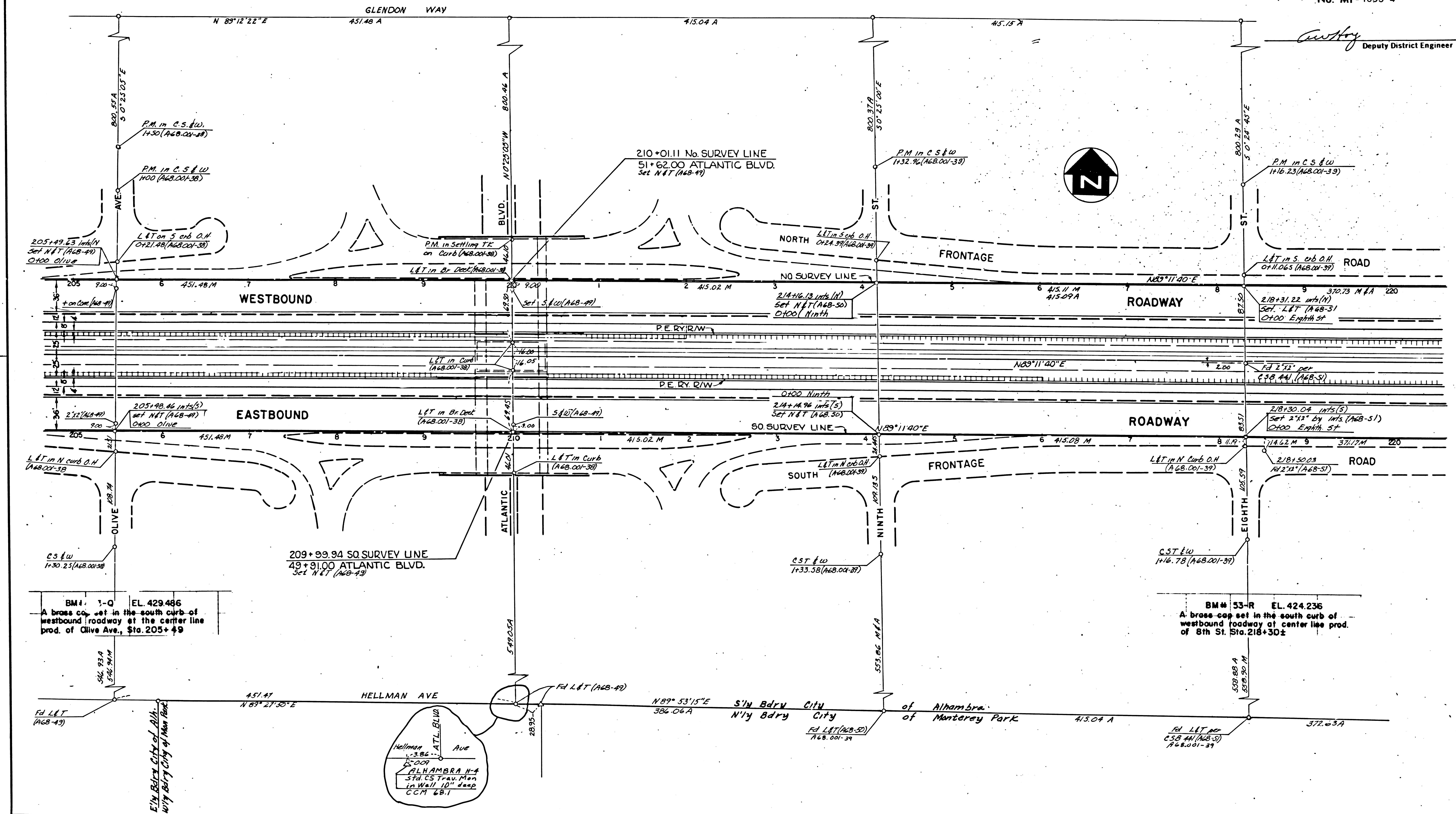
BM # 22 EL. 428.72  
This conc. nob on west curb Curtis St.  
107' W of Sta. 201+73 No. Drive  
Ramona Blvd.

DIST	COUNTY	SECTION	POST MILES - TOTAL PROJECT	SHEET NO.	TOTAL SHEETS
7	LA	10	23.33 - 26.86	7	19

STATE OF CALIFORNIA  
HIGHWAY TRANSPORTATION AGENCY  
DEPARTMENT OF PUBLIC WORKS  
DIVISION OF HIGHWAYS

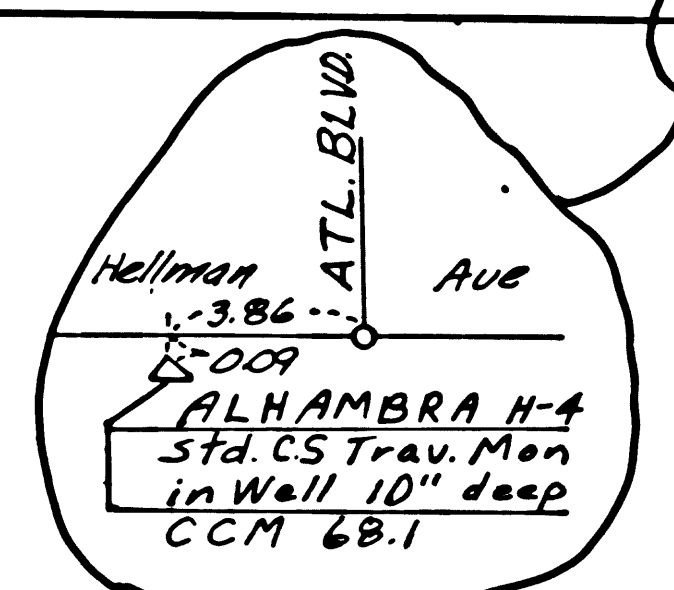
MONUMENTATION MAP  
No. MF-1853-4

*Anthony*  
Deputy District Engineer



BM# 1-Q EL. 429.486  
A brass cap set in the south curb of westbound roadway at the center line prod. of Olive Ave., Sta. 205+49

BM# 53-R EL. 424.236  
A brass cap set in the south curb of westbound roadway at center line prod. of 8th St. Sta. 218+30±



133-11