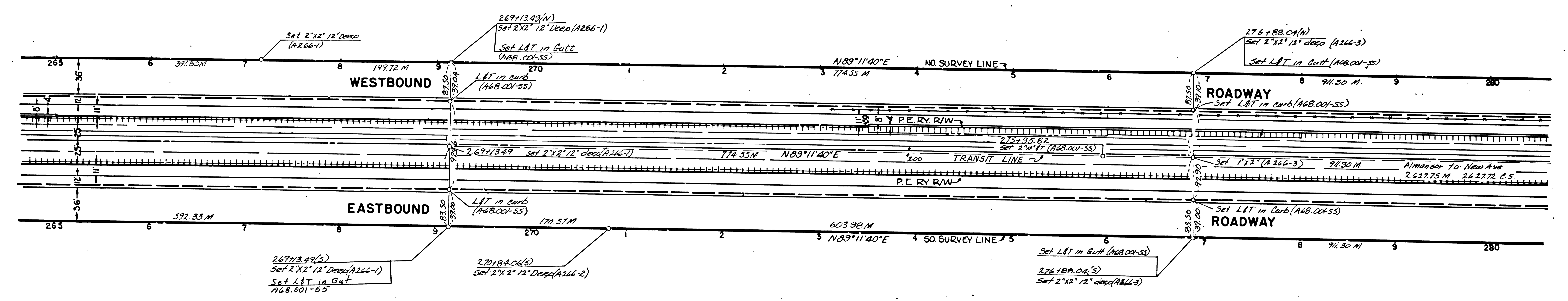
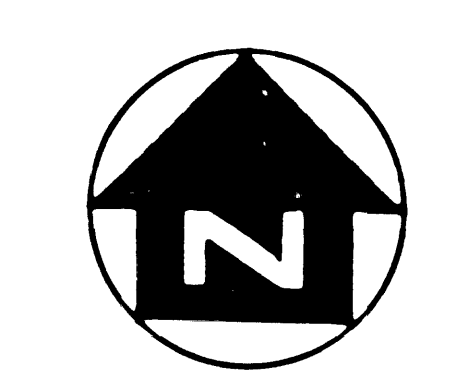


DIST	COUNTY	ROUTE	POST MILES - TOTAL PROJECT	SHEET NO.	TOTAL SHEETS
7	LA	10	23.33 - 26.86	11	19

STATE OF CALIFORNIA
HIGHWAY TRANSPORTATION AGENCY
DEPARTMENT OF PUBLIC WORKS
DIVISION OF HIGHWAYS
MONUMENTATION MAP
No. MF-1955-1

Anthony
Deputy District Engineer



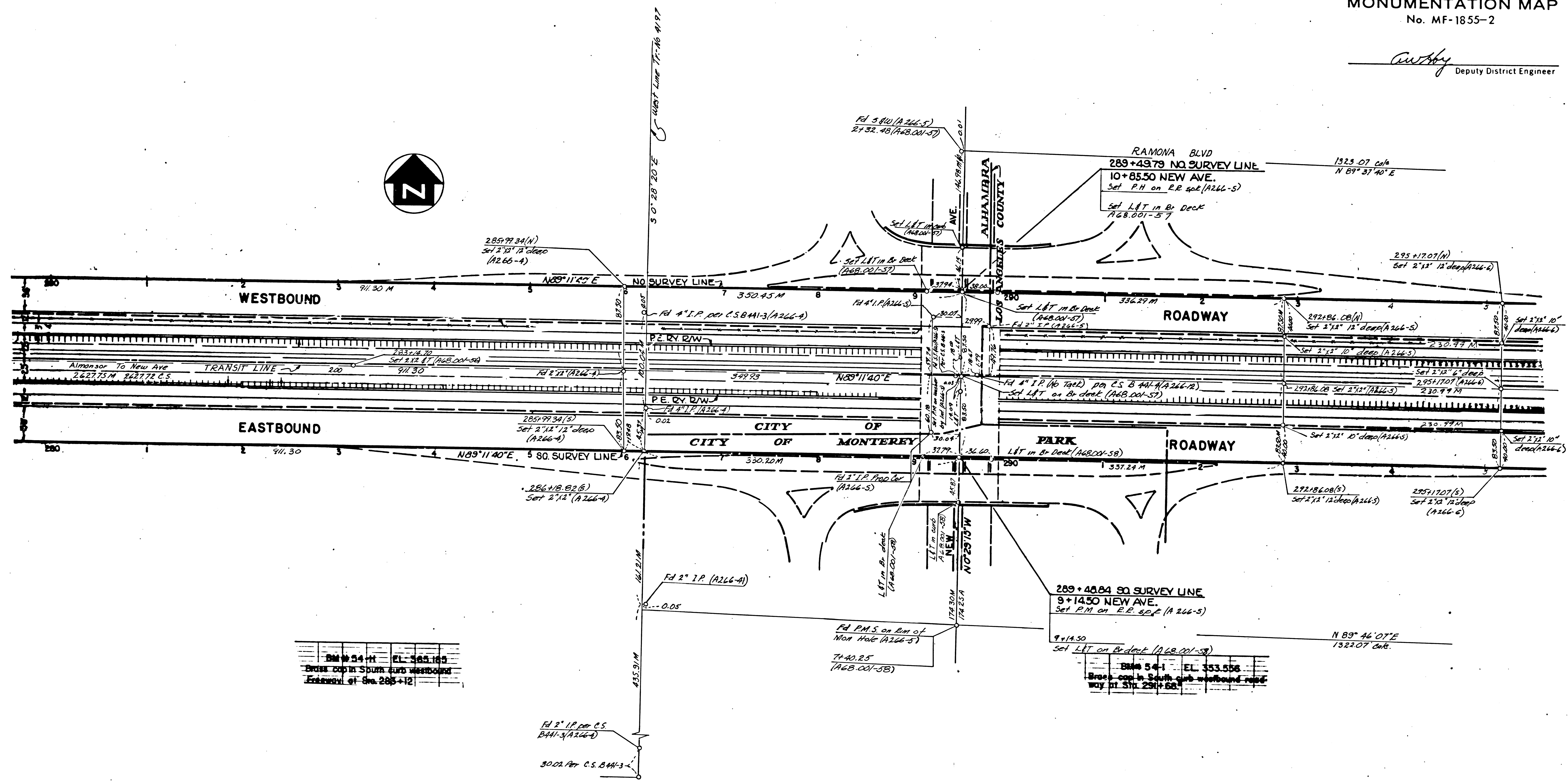
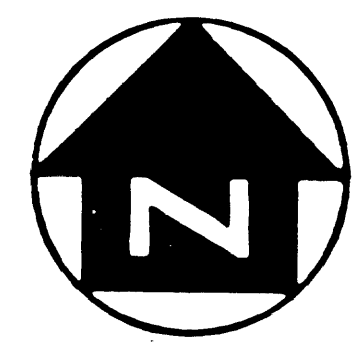
BM # 54-F EL. 392.610
Brass top set in North curb, eastbound
Freeway Sta. 268+01.4 480' east center -
Almondor Ave.

BM # 32-B EL. 369.852
3/4" x 3/4" round non-rod buried 4" on
center line P.E.R.R. R/W Sta. 280

SHEET	COUNTY	ROUTE	POST MILES - TOTAL PROJECT	SHEET	TOTAL SHEETS
7	LA	10	23.33-26.86	12	19

STATE OF CALIFORNIA
HIGHWAY TRANSPORTATION AGENCY
DEPARTMENT OF PUBLIC WORKS
DIVISION OF HIGHWAYS
MONUMENTATION MAP
No. MF-1855-2

C. Aubrey
Deputy District Engineer



BM # 54-N	EL. 365.185
Brass cap in Spun curb westbound	
Elevated of Sta. 285+12	

BM # 54-1	EL. 353.558
Brass cap in South curb westbound roadway at Sta. 230+68	

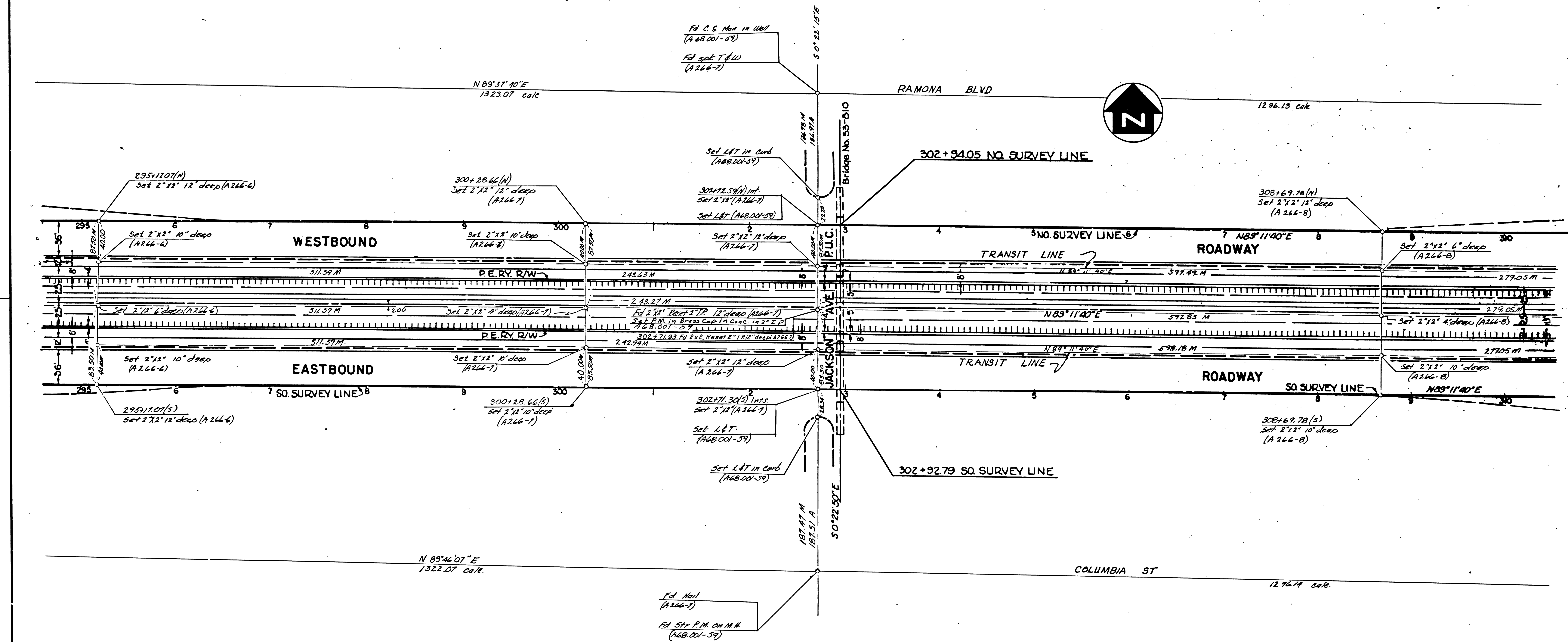
133-11

SHEET	COUNTY	SECTION	POST MILES - TOTAL PROJECT	SHEET	TOTAL SHEETS
7	LA	10	23.33-26.86	13	19

STATE OF CALIFORNIA
HIGHWAY TRANSPORTATION AGENCY
DEPARTMENT OF PUBLIC WORKS
DIVISION OF HIGHWAYS

MONUMENTATION MAP
No. MF-1855-3

C. W. Hoyle
Deputy District Engineer

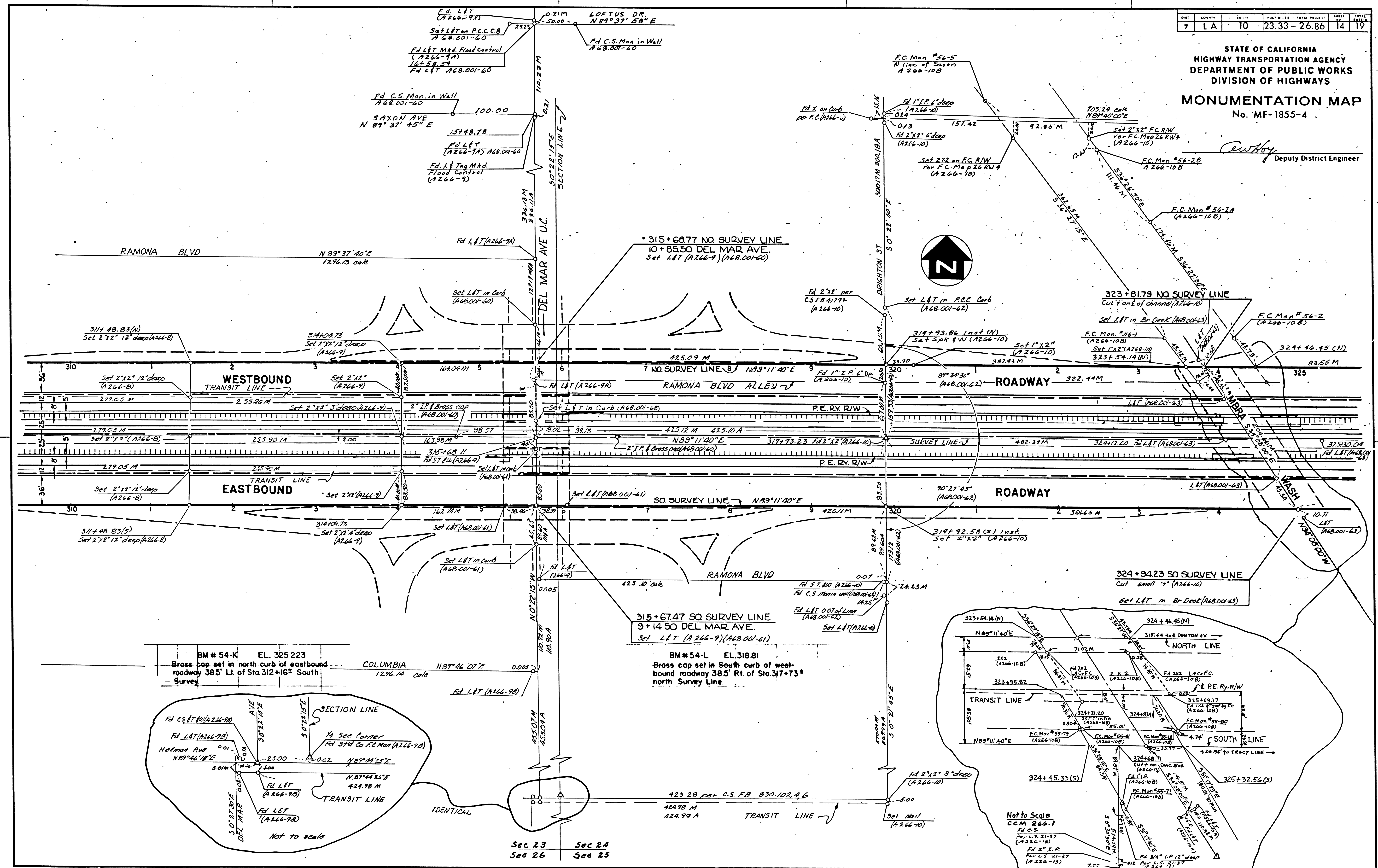


DATE	BY	NO.	POST-MILES - TOTAL PROJECT	SHEET NO.	TOTAL SHEETS
7	LA	10	23.33 - 26.86	14	19

STATE OF CALIFORNIA
HIGHWAY TRANSPORTATION AGENCY
DEPARTMENT OF PUBLIC WORKS
DIVISION OF HIGHWAYS

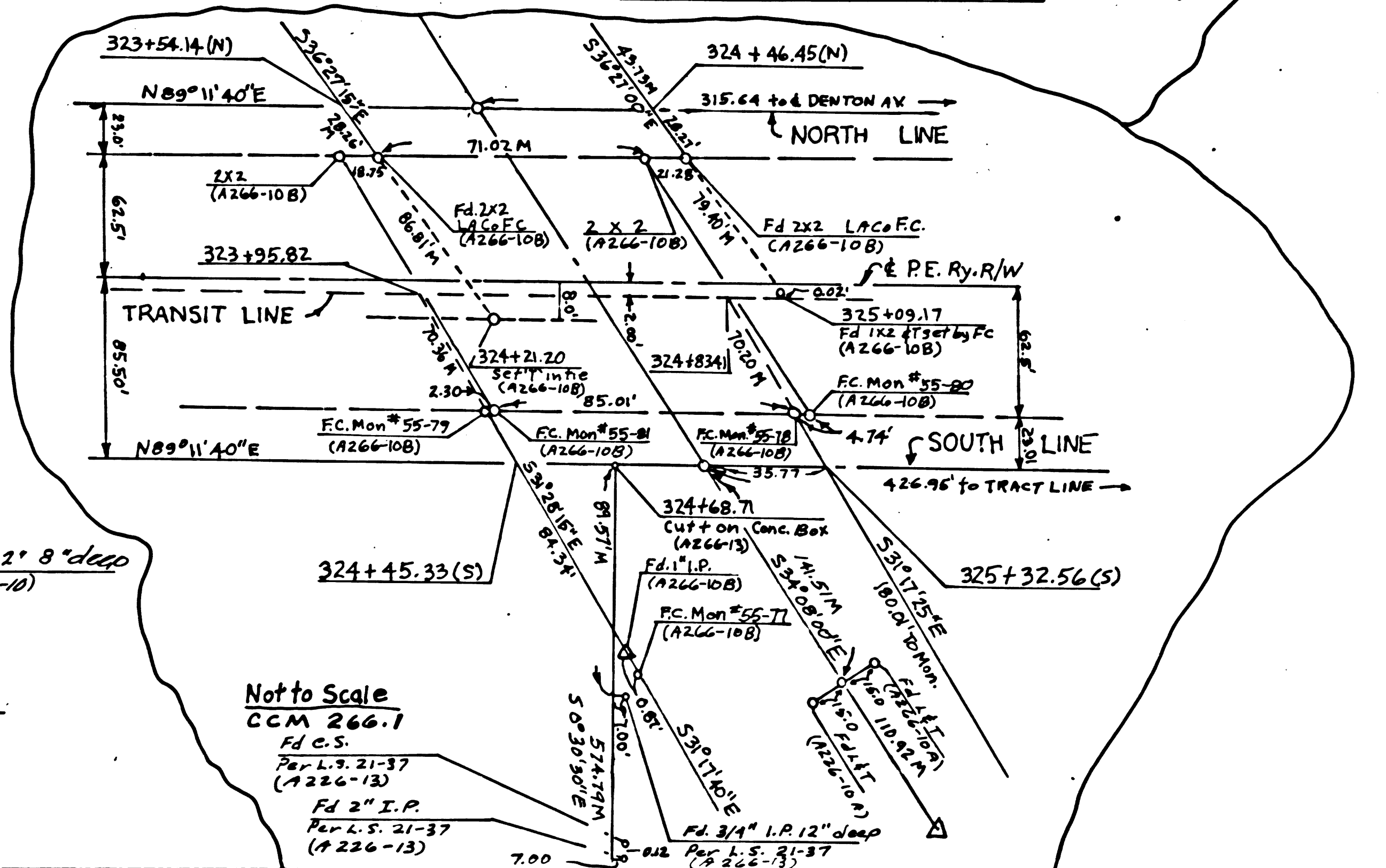
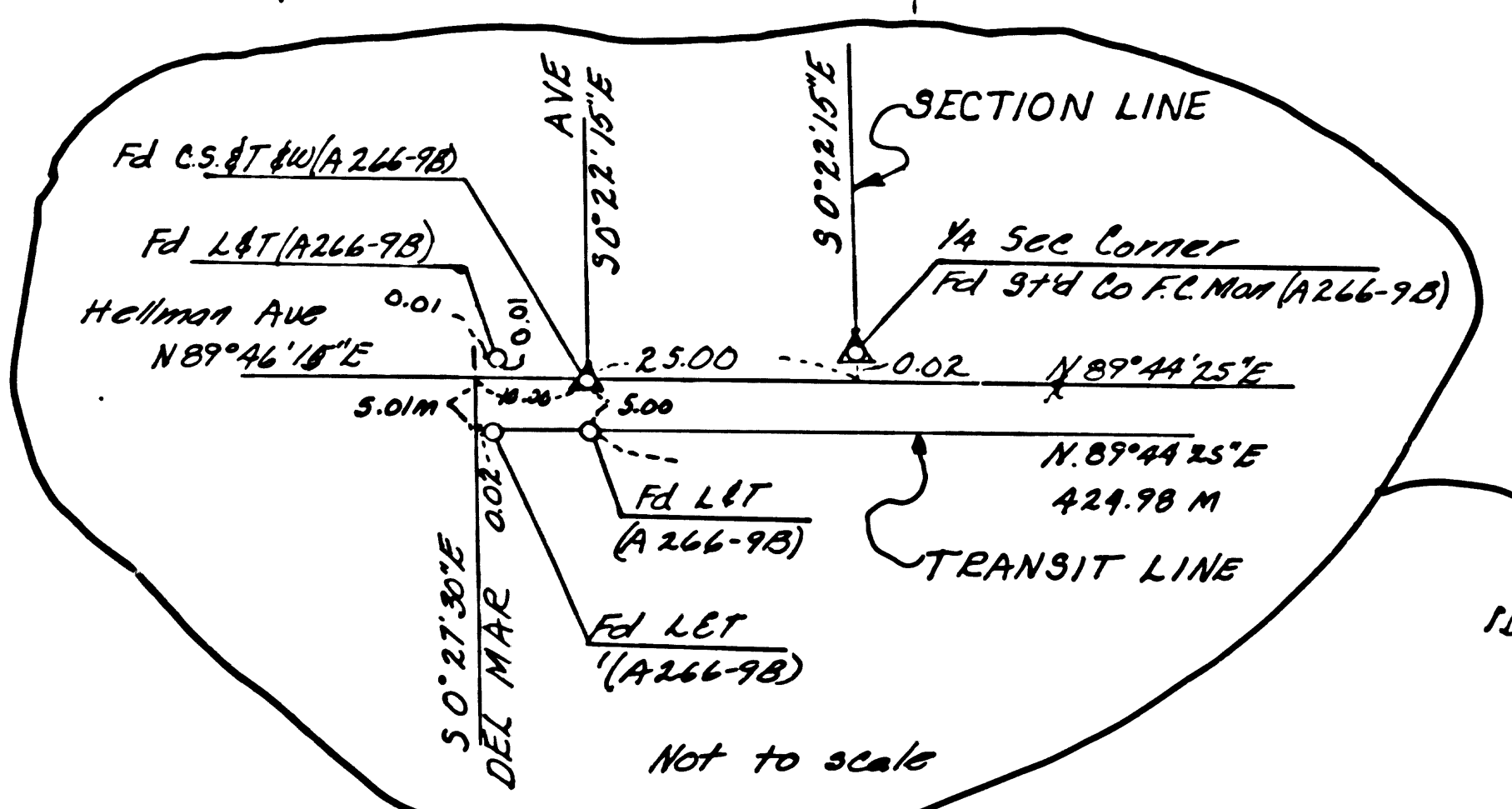
MONUMENTATION MAP
No. MF-1855-4

Deputy
Deputy District Engineer



BM # 54-K EL. 325.223
Brass cap set in north curb of eastbound roadway 38.5' Lt. of Sta. 312+16.5 South Survey

BM # 54-L EL. 318.81
Brass cap set in South curb of westbound roadway 38.5' Rt. of Sta. 317+73.3 north Survey Line.



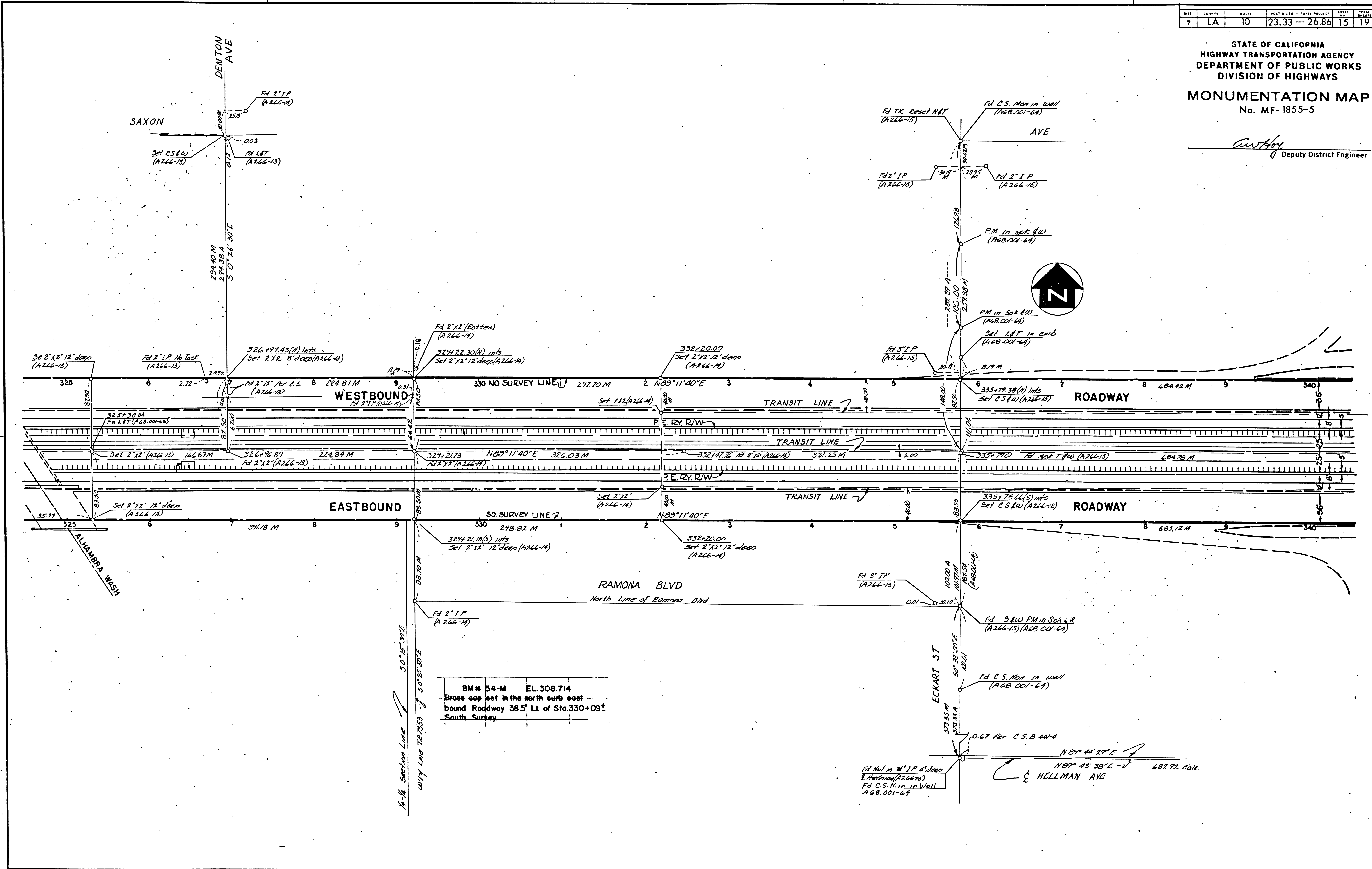
Sec 23 Sec 24
Sec 26 Sec 25

133-11

DIST.	COUNTY	NO. 15	POST M. L.S.	TOTAL PROJECT	SHEET NO.	TOTAL SHEETS
7	LA	10	23.33	26.86	15	19

STATE OF CALIFORNIA
HIGHWAY TRANSPORTATION AGENCY
DEPARTMENT OF PUBLIC WORKS
DIVISION OF HIGHWAYS
MONUMENTATION MAP
No. MF-1855-5

C. W. H. H.
Deputy District Engineer

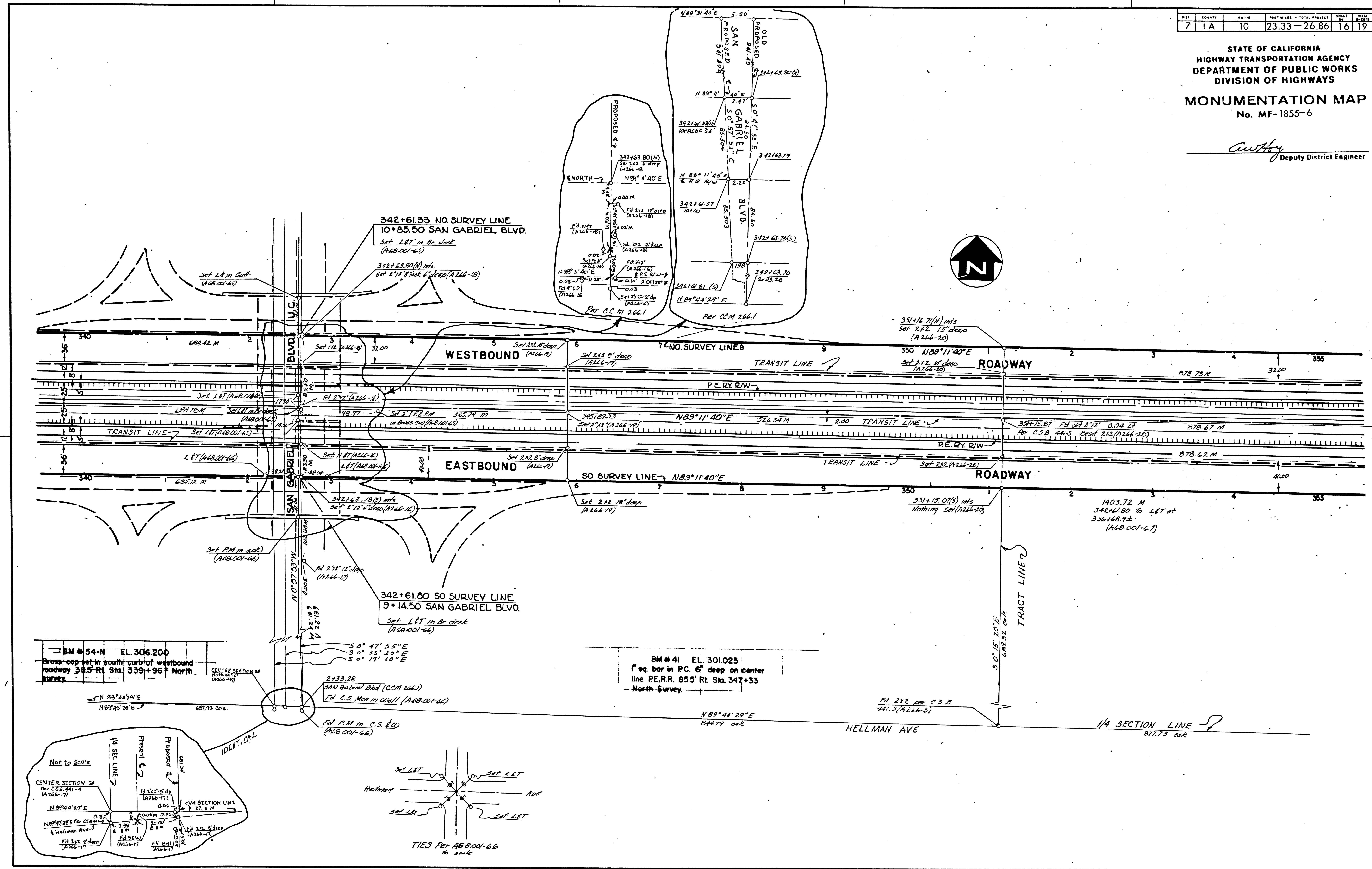


BM # 54-M	EL. 308.714
Brose cap set in the north curb east bound Roadway 38.5' Lt of Sta. 330+09.2 South Survey	

DATE	COUNTY	NO. SHEETS	PROJECT MILES - TOTAL PROJECT	SHEET NO.	TOTAL SHEETS
7	LA	10	23.33-26.86	16	19

STATE OF CALIFORNIA
HIGHWAY TRANSPORTATION AGENCY
DEPARTMENT OF PUBLIC WORKS
DIVISION OF HIGHWAYS
MONUMENTATION MAP
No. MF-1855-6

Anthony
Deputy District Engineer



133-11