

SHEET	TOTAL SHEETS	DATE	NO. IN	NO. OF	DATE	NO. IN	NO. OF
7	10	LA	10	23.33-26.86	17	19	

STATE OF CALIFORNIA
 HIGHWAY TRANSPORTATION AGENCY
 DEPARTMENT OF PUBLIC WORKS
 DIVISION OF HIGHWAYS
MONUMENTATION MAP
 No. MF-1856-1

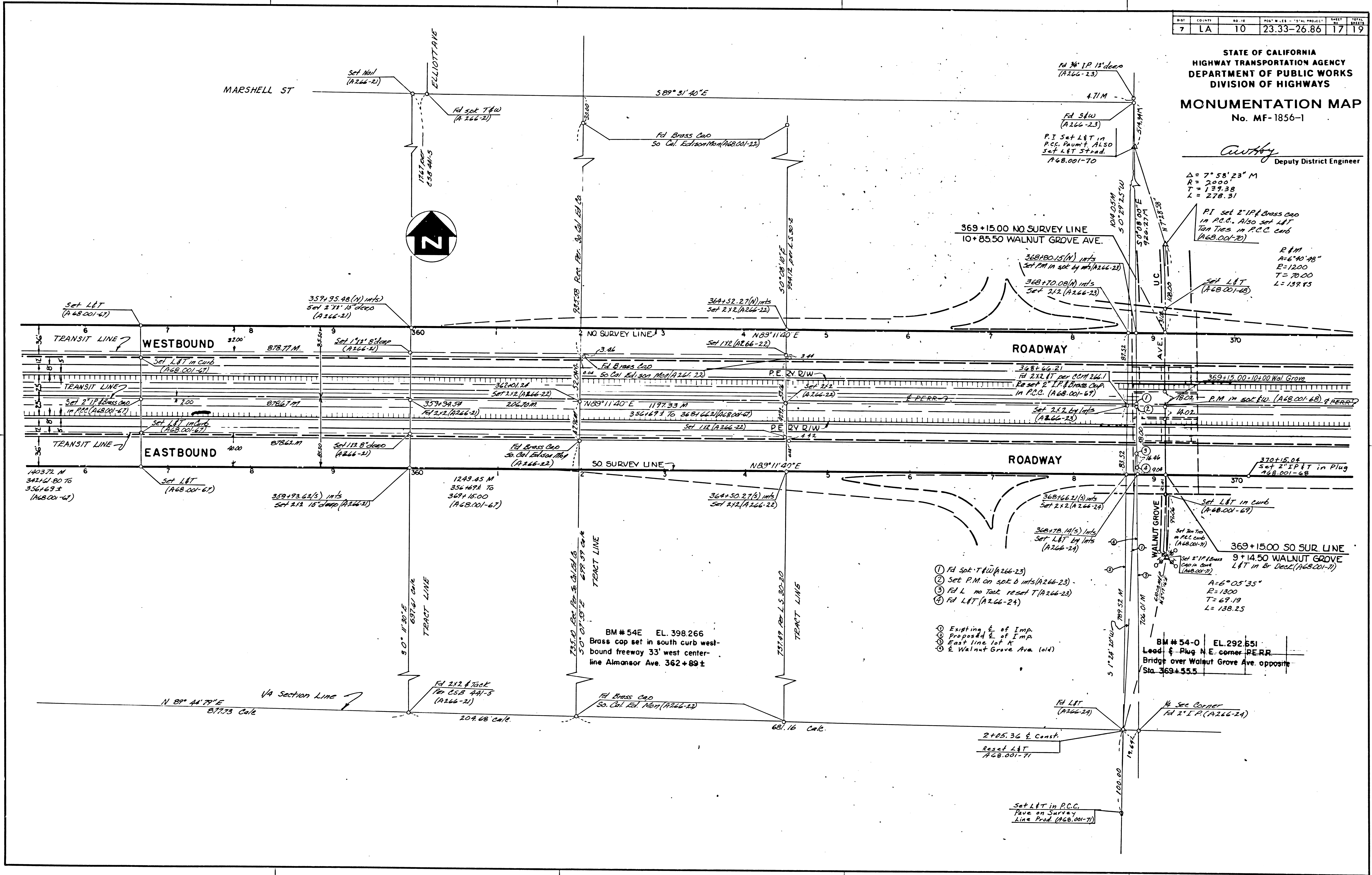
Anthony
 Deputy District Engineer

$\Delta = 7^{\circ} 58' 23''$ M
 $R = 2900$
 $T = 139.38$
 $L = 278.31$

P.I. set 2" I.P. Brass Cap
 in P.C.C. Also set L&T
 Tan Ties in P.C.C. curb
 (A268-001-70)

R.P.M.
 $A = 6^{\circ} 40' 48''$
 $R = 1200$
 $T = 70.00$
 $L = 139.45$

Set L&T
 (A268-001-68)



- ① P.I. set 2" I.P. Brass Cap
- ② Set P.M. on spot 6 mts (A266-23)
- ③ P.I. set 2" I.P. Brass Cap
- ④ Set L&T (A266-24)

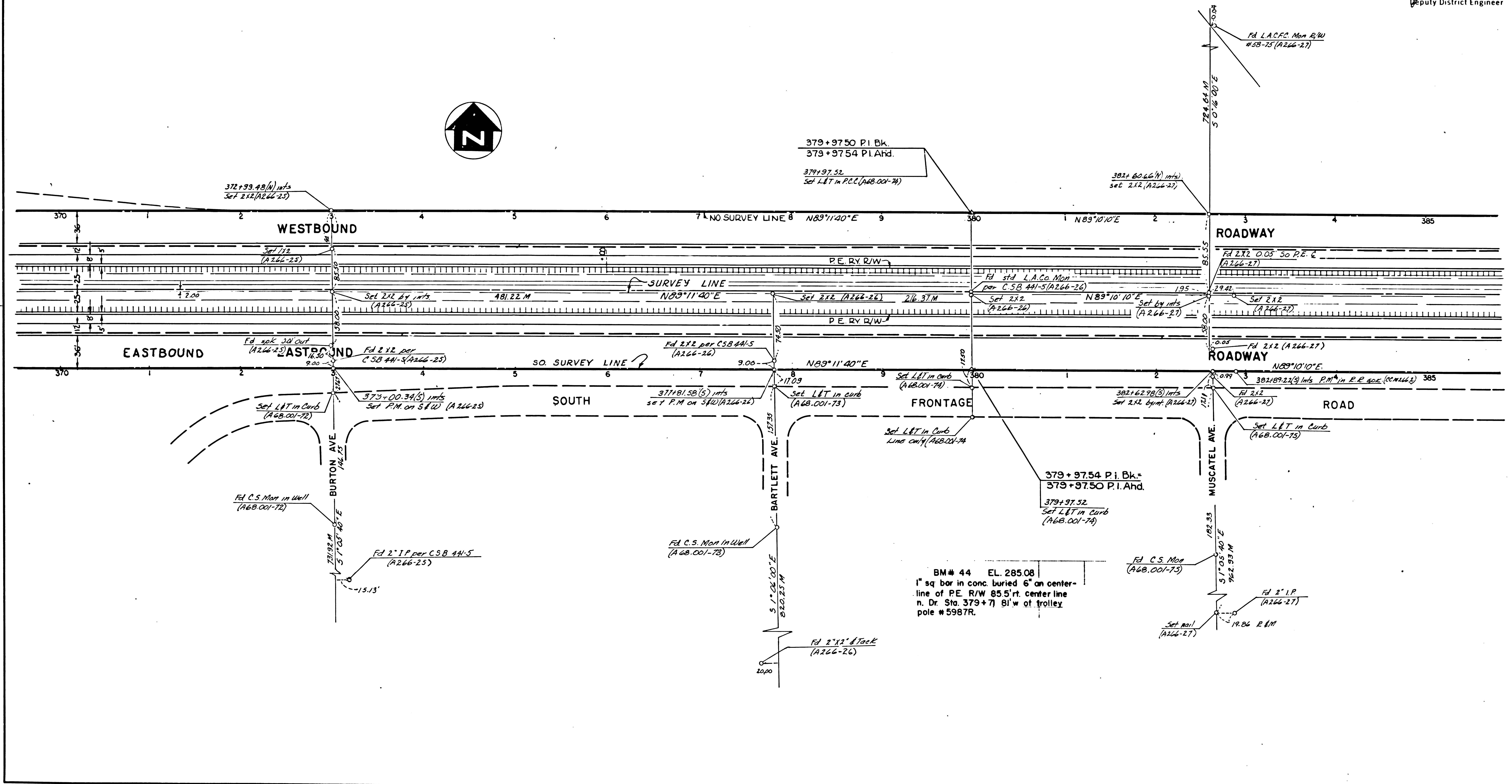
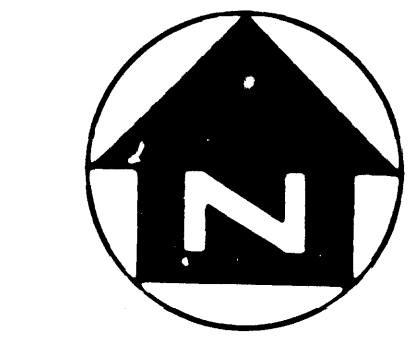
- ⊙ Existing E. of Imp.
- ⊙ Proposed E. of Imp.
- ⊙ East line of A
- ⊙ E. Walnut Grove Ave. (old)

BM # 54-O EL. 292.651
 Lead & Plug N.E. corner PERR
 Bridge over Walnut Grove Ave. opposite
 Sta. 369+55.5

DIST	COUNTY	NO. 10	POST M. L.S. - TOTAL PROJECT	SHEET NO.	TOTAL SHEETS
7	LA	10	23.33 - 26.86	18	19

STATE OF CALIFORNIA
HIGHWAY TRANSPORTATION AGENCY
DEPARTMENT OF PUBLIC WORKS
DIVISION OF HIGHWAYS
MONUMENTATION MAP
No. MF-1856-2

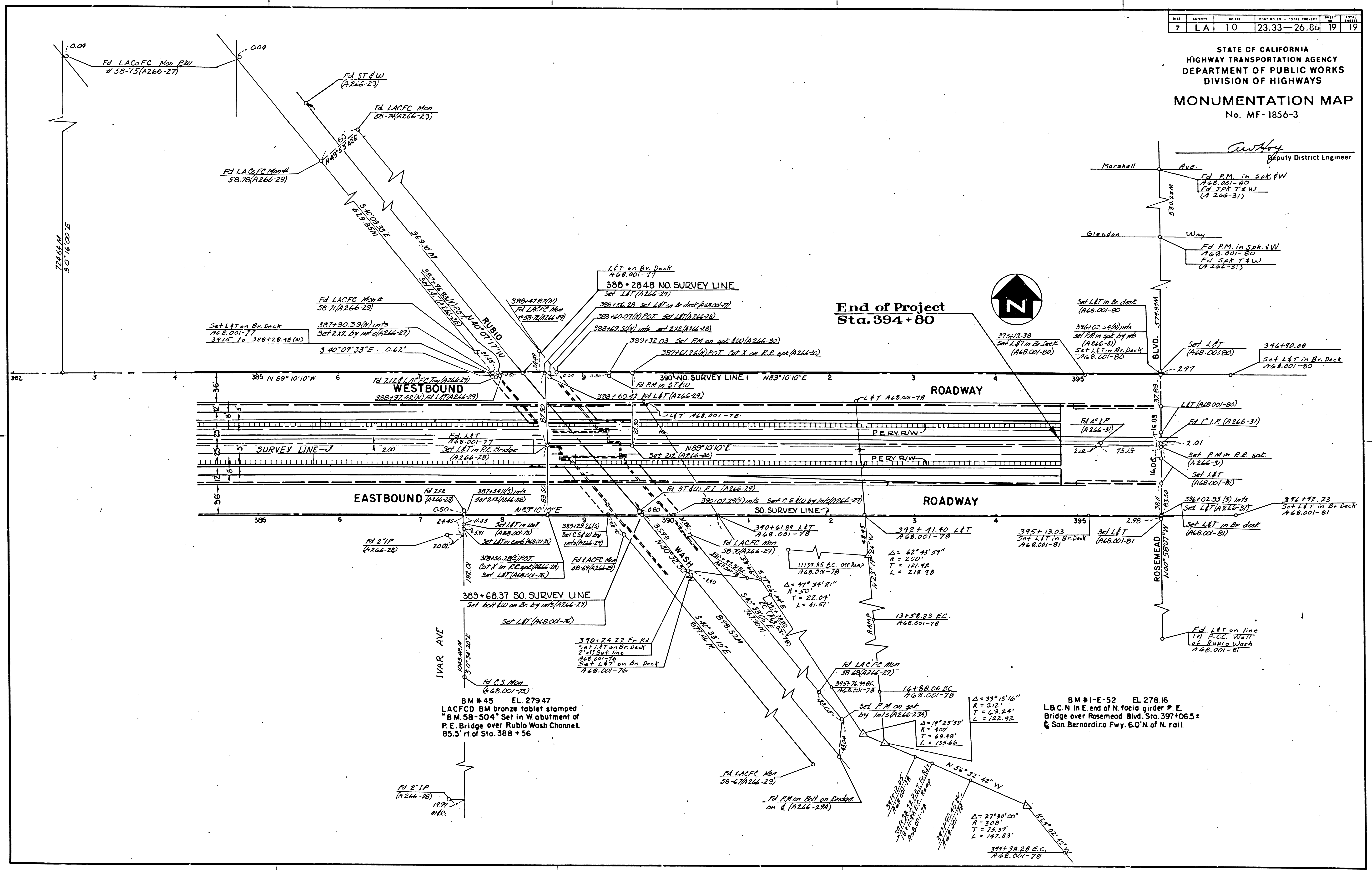
Anthony
Deputy District Engineer



SHEET NO.	COUNTY	NO. IN PROJECT	POST MILES - TOTAL PROJECT	SHEET NO.	TOTAL SHEETS
7	LA	10	23.33-26.84	19	19

STATE OF CALIFORNIA
HIGHWAY TRANSPORTATION AGENCY
DEPARTMENT OF PUBLIC WORKS
DIVISION OF HIGHWAYS
MONUMENTATION MAP
No. MF-1856-3

C. W. H. H.
Deputy District Engineer



BM #45 EL. 279.47
LACFD BM bronze tablet stamped
"B.M. 58-504" Set in W. abutment of
P.E. Bridge over Rubio Wash Channel.
85.5' rt. of Sta. 388+56

BM #1-E-52 EL. 278.16
L&C.N. in E. end of N. fascia girder P.E.
Bridge over Rosemead Blvd. Sta. 397+06.5+
San Bernardino Fwy. 6.0' N. of N. rail.

133-11