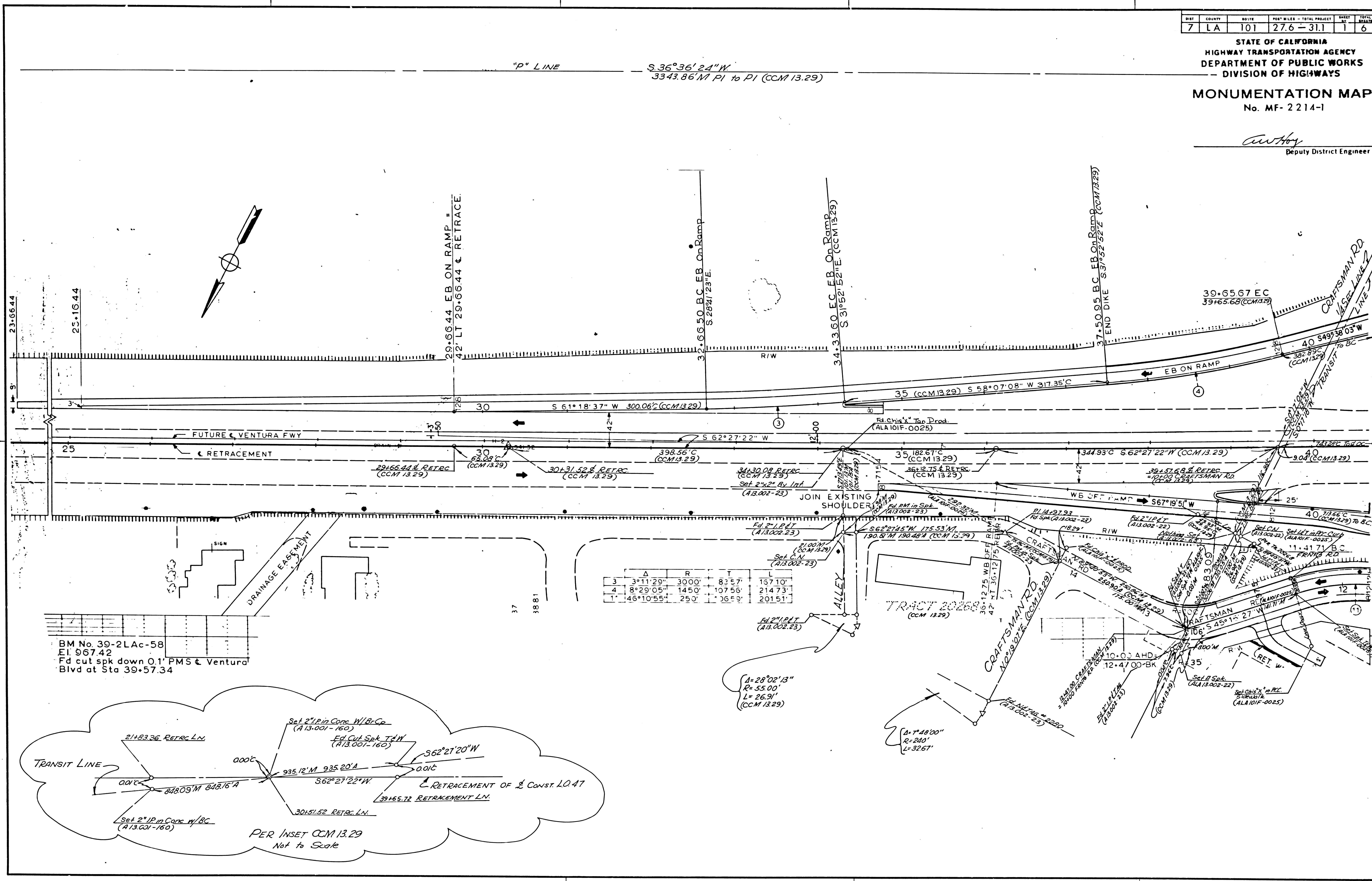


DIST.	COUNTY	ROUTE	POST MILES - TOTAL PROJECT	SHEET NO.	TOTAL SHEETS
7	LA	101	27.6 - 31.1	1	6

STATE OF CALIFORNIA
HIGHWAY TRANSPORTATION AGENCY
DEPARTMENT OF PUBLIC WORKS
DIVISION OF HIGHWAYS

MONUMENTATION MAP
No. MF-2214-1

Anthony
Deputy District Engineer



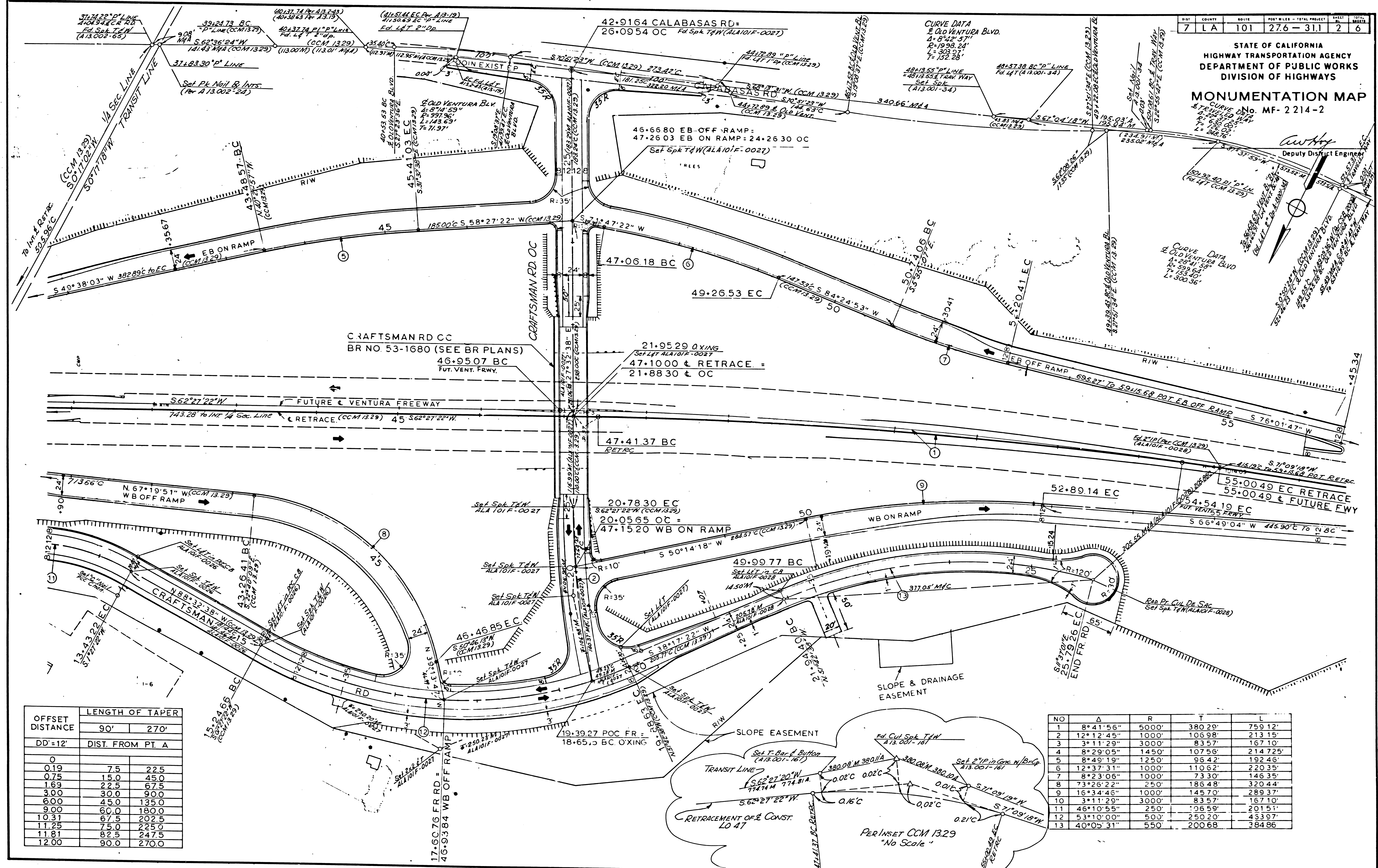
163-7

F.M.20575 -SHT. I

STATE OF CALIFORNIA
HIGHWAY TRANSPORTATION AGENCY
DEPARTMENT OF PUBLIC WORKS
DIVISION OF HIGHWAYS

MONUMENTATION MAP
No. MF-2214-2

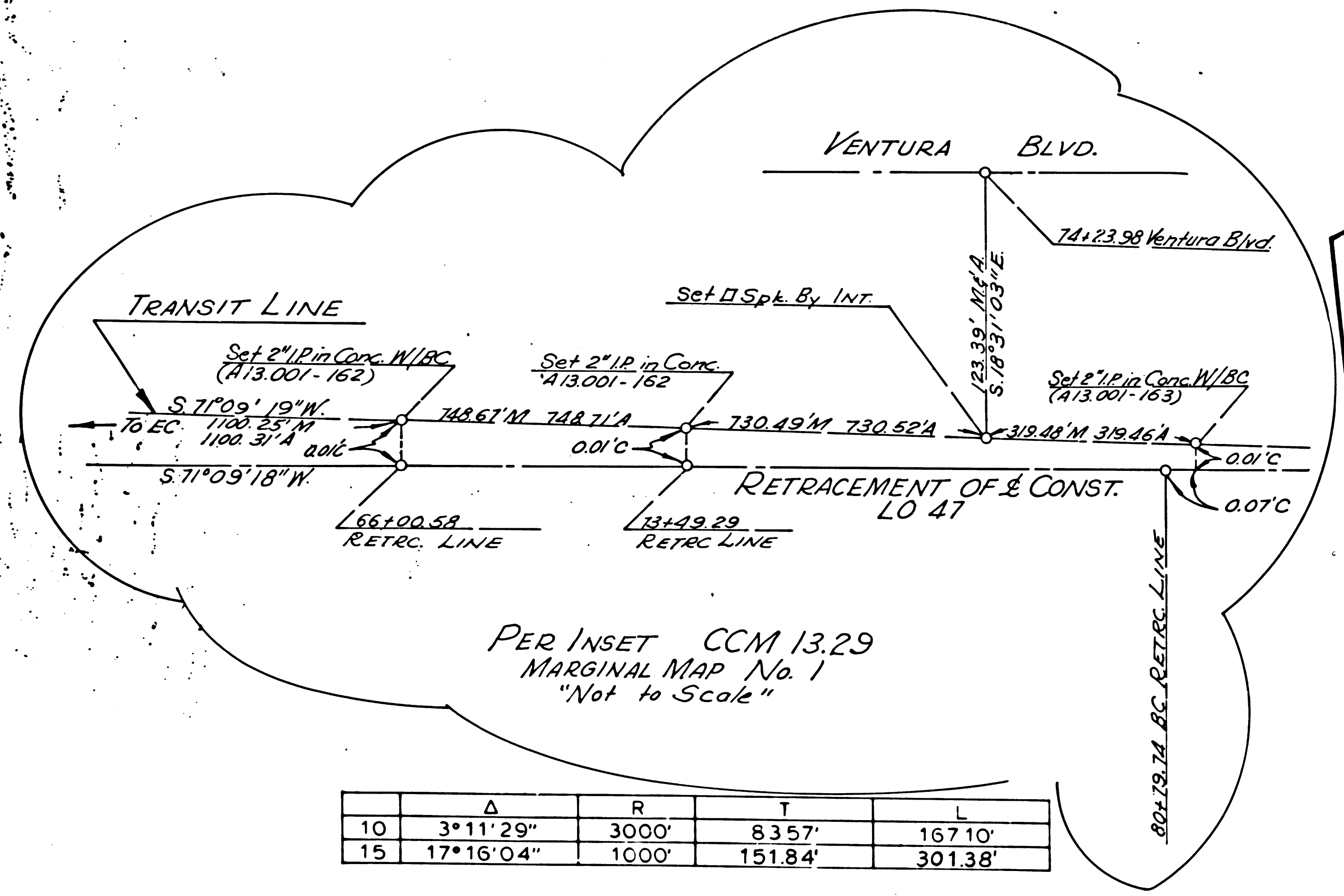
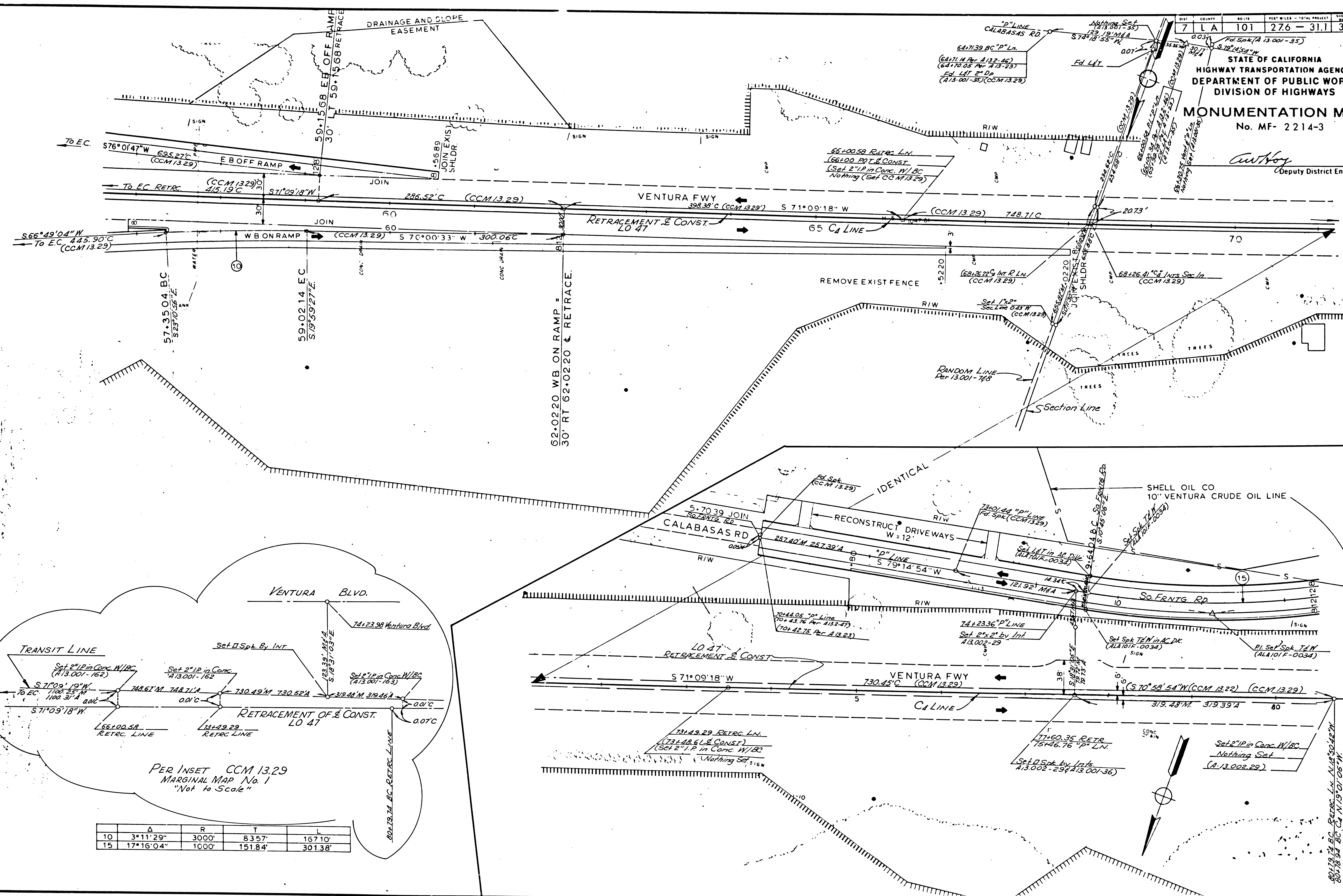
Deputy District Engineer



OFFSET DISTANCE	LENGTH OF TAPER	
	90'	270'
DD'=12'	DIST. FROM PT. A	
0		
0.19	7.5	22.5
0.75	15.0	45.0
1.69	22.5	67.5
3.00	30.0	90.0
6.00	45.0	135.0
9.00	60.0	180.0
10.31	67.5	202.5
11.25	75.0	225.0
11.81	82.5	247.5
12.00	90.0	270.0

NO	Δ	R	T	L
1	8°41'56"	5000'	380.29'	759.12'
2	12°12'45"	1000'	106.98'	213.15'
3	3°11'29"	3000'	83.57'	167.10'
4	8°29'05"	1450'	107.56'	214.725'
5	8°49'19"	1250'	95.42'	192.46'
6	12°37'31"	1000'	110.62'	220.35'
7	8°23'06"	1000'	73.30'	146.35'
8	73°26'22"	250'	186.48'	320.44'
9	16°34'46"	1000'	145.70'	289.37'
10	3°11'29"	3000'	83.57'	167.10'
11	46°10'55"	250'	106.59'	201.51'
12	53°10'00"	500'	250.20'	453.97'
13	40°05'31"	550'	200.68'	384.86'

C. W. Hoag
Deputy District Engineer

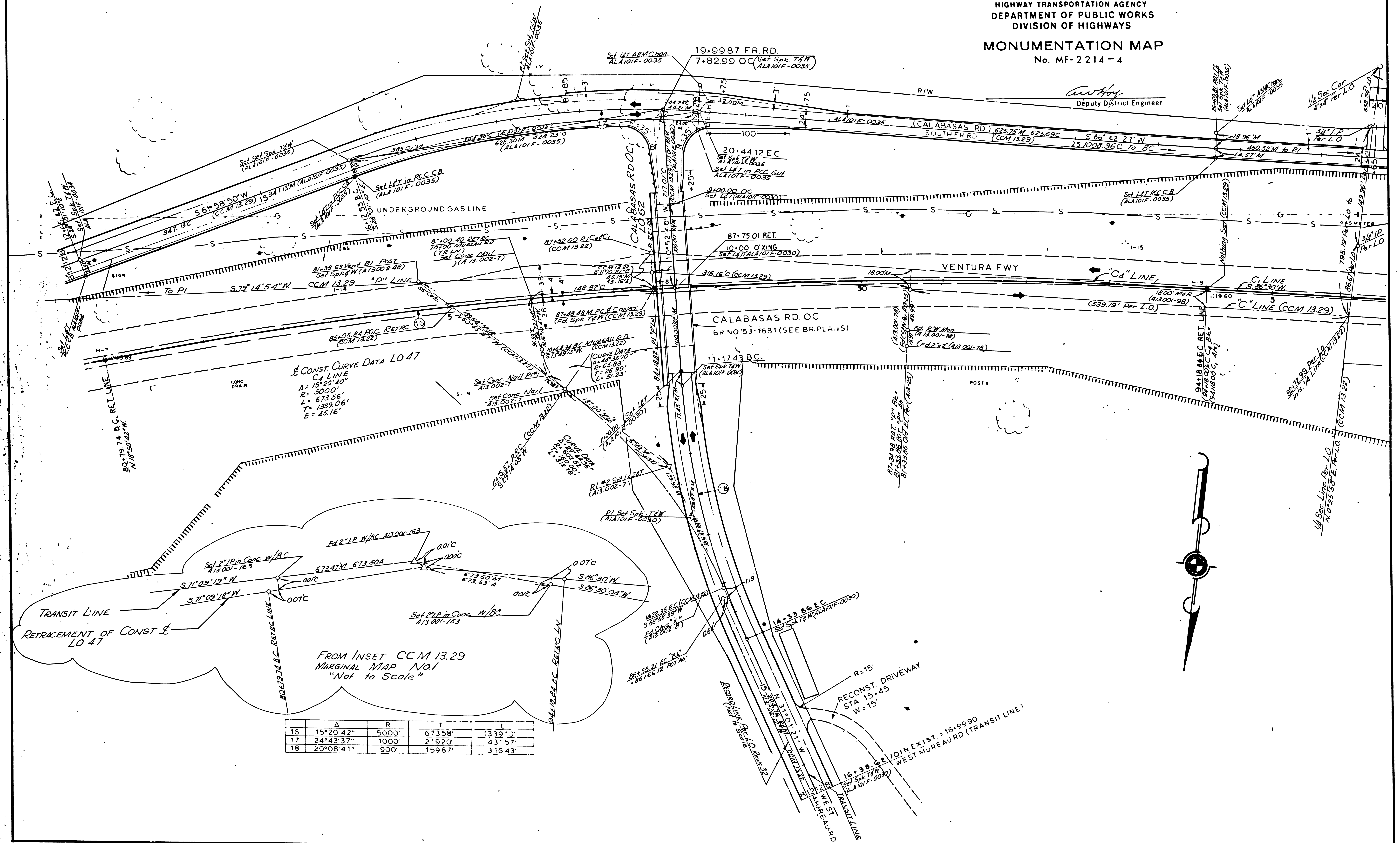


	A	R	T	L
10	3°11'29"	3000'	8357'	16710'
15	17°16'04"	1000'	15184'	30138'

SHEET	COUNTY	SECTION	TOTAL SHEETS	TOTAL PROJECT	TOTAL SHEETS	TOTAL PROJECT
7	LA	101	27.6	- 31.1	4	6

STATE OF CALIFORNIA
HIGHWAY TRANSPORTATION AGENCY
DEPARTMENT OF PUBLIC WORKS
DIVISION OF HIGHWAYS
MONUMENTATION MAP
No. MF-2214-4

Anthony
Deputy District Engineer



FROM INSET CCM 13.29
MARGINAL MAP No. 1
"NOT TO SCALE"

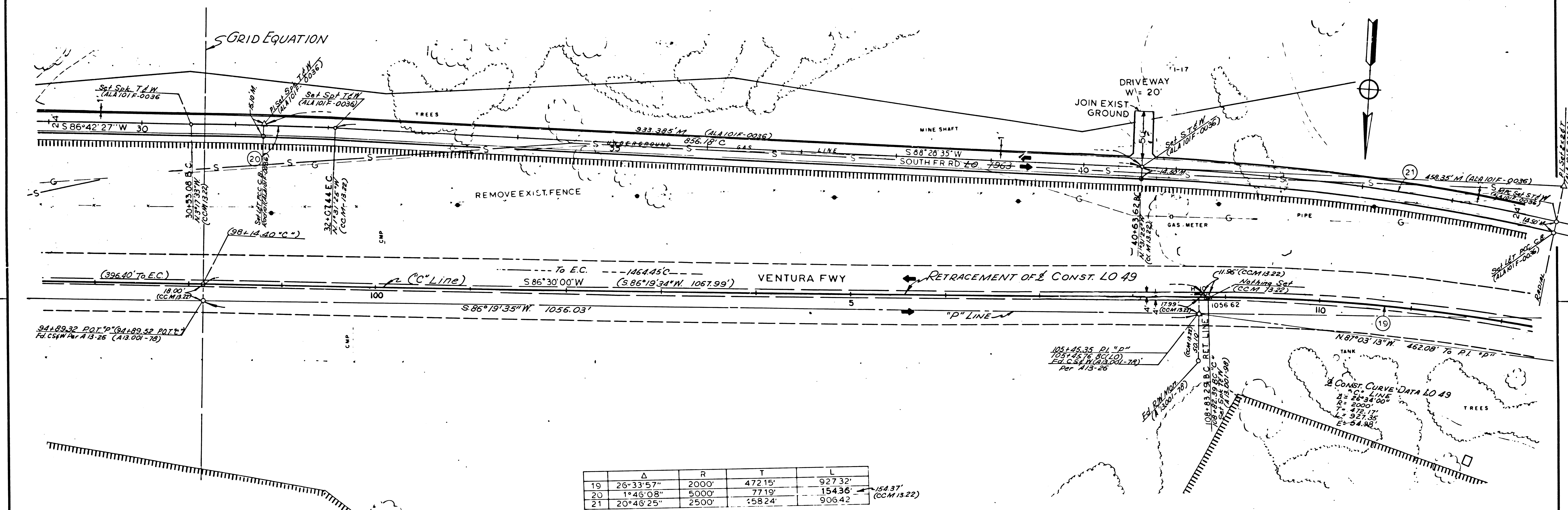
Δ	R	T	L
16	15°20'42"	5000'	6735.8'
17	24°43'37"	1000'	2192.0'
18	20°08'41"	900'	1598.7'

163-7

SHEET	COUNTY	ROUTE	POST MILES - TOTAL PROJECT	SHEET	TOTAL SHEETS
7	LA	101	27.6	31.1	6

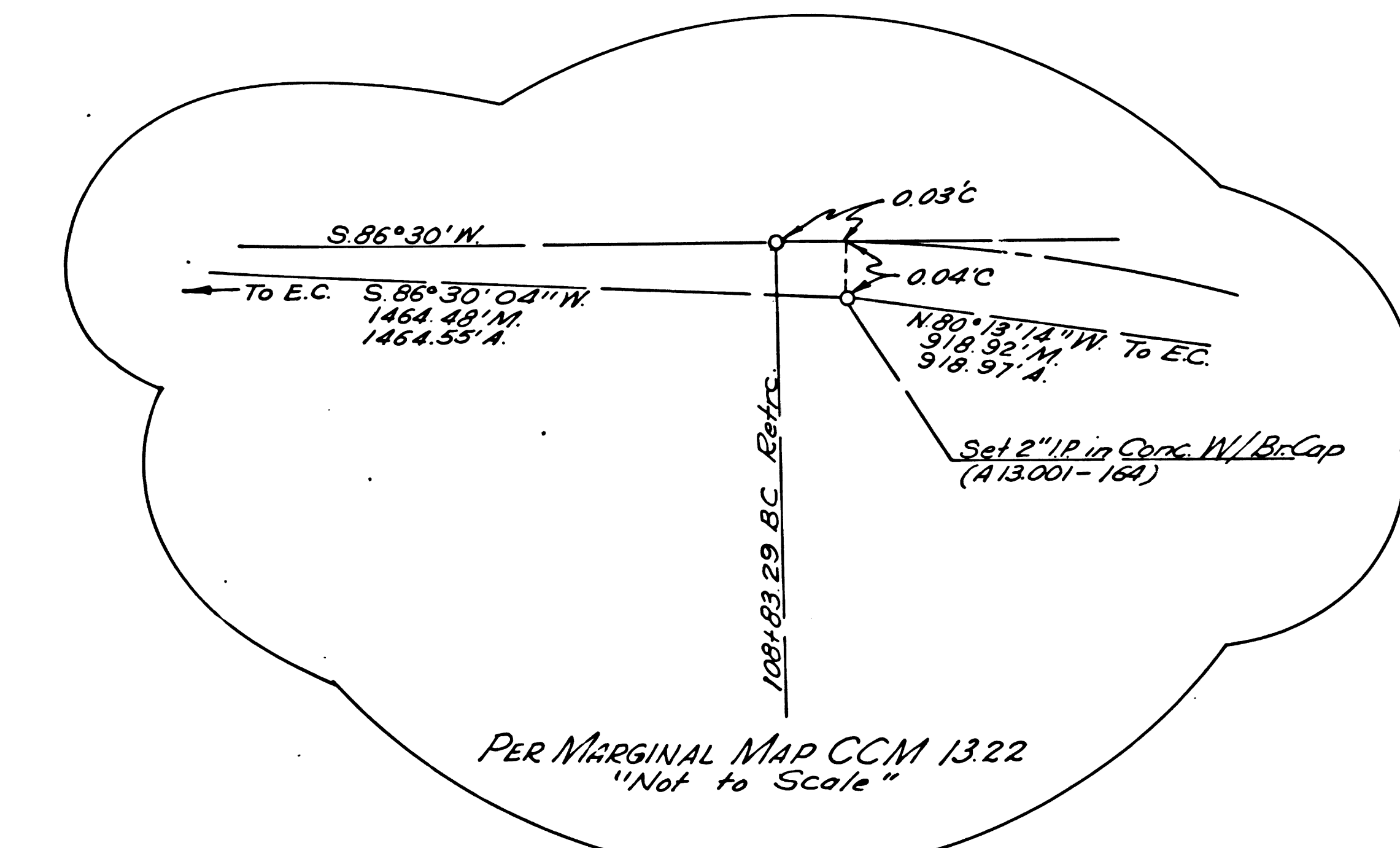
STATE OF CALIFORNIA
HIGHWAY TRANSPORTATION AGENCY
DEPARTMENT OF PUBLIC WORKS
DIVISION OF HIGHWAYS
MONUMENTATION MAP
No. MF-2214-5

Anthony
Deputy District Engineer



	Δ	R	T	L
19	26°33'57"	2000'	472.15'	927.32'
20	1°46'08"	5000'	77.19'	154.36'
21	20°46'25"	2500'	582.4'	906.42'

BM No 108-2LAc-58
Elev 105662
Fd brass in 2" IP in conc
O3' below PMS median
surface at Ventura Blvd
sta 108+8239 BC (sta

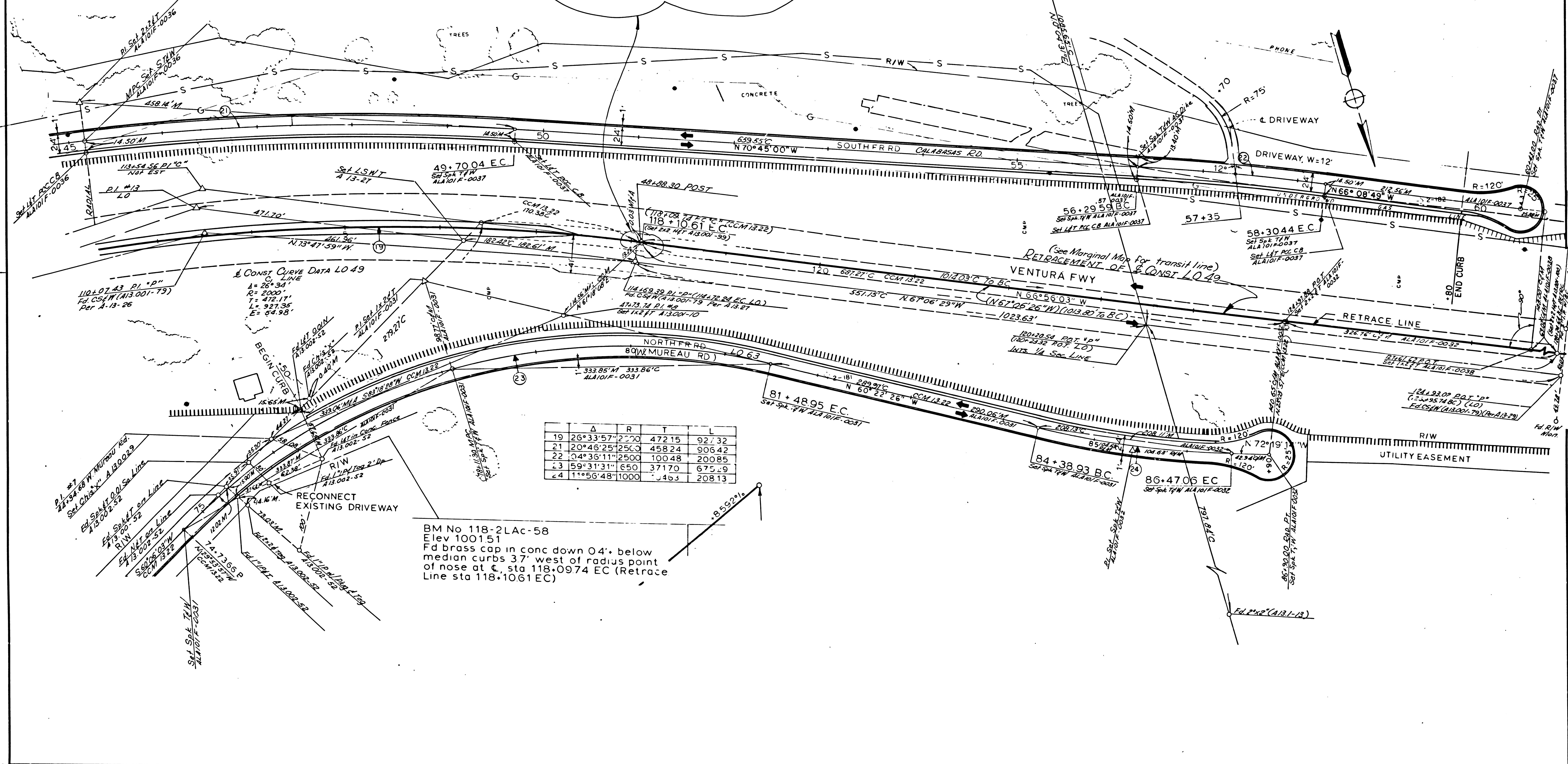
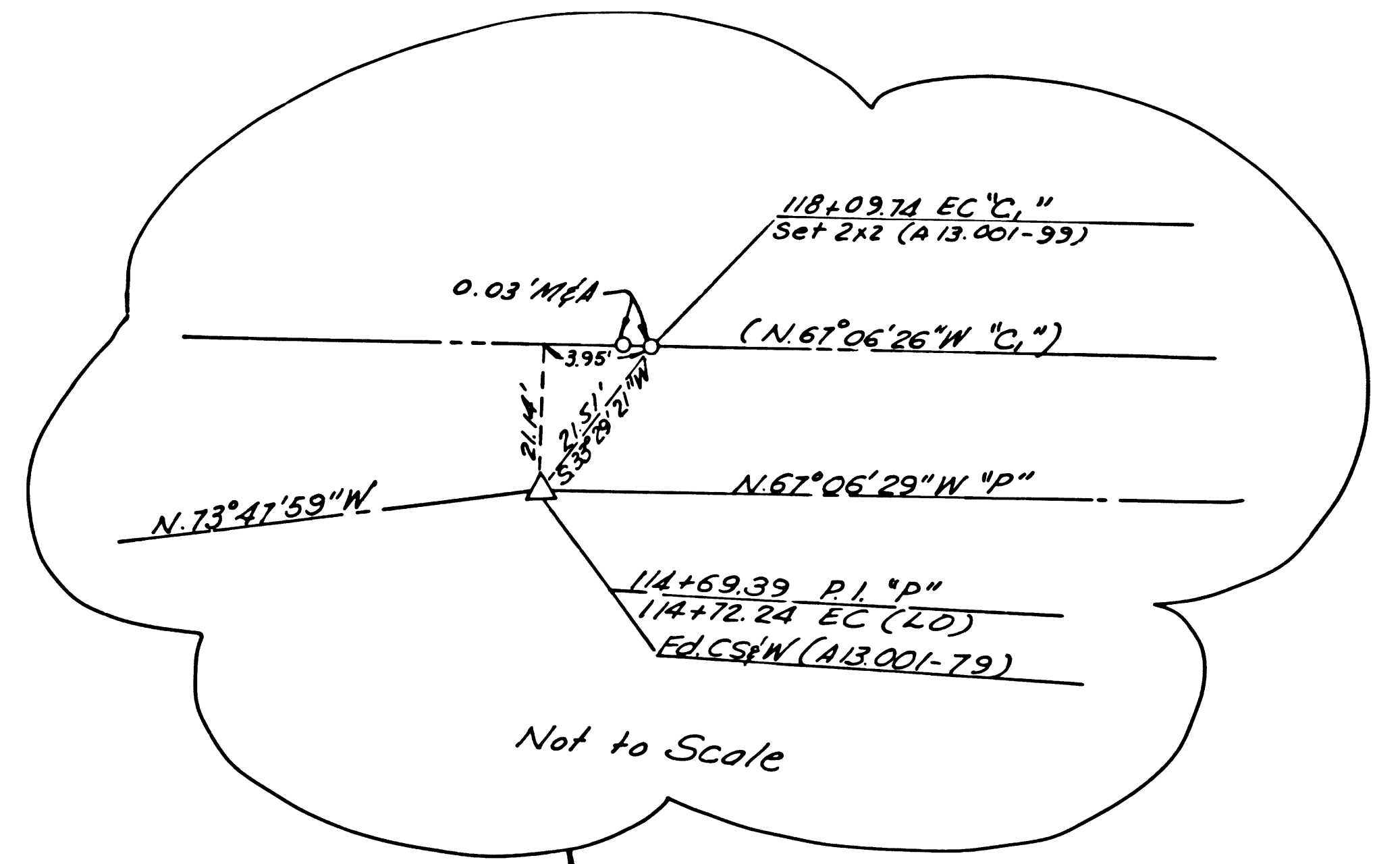


1-3

DIST	COUNTY	ROUTE	POST MILES - TOTAL PROJECT	SHEET NO.	TOTAL SHEETS
7	LA	101	27.6 - 31.1	6	6

STATE OF CALIFORNIA
HIGHWAY TRANSPORTATION AGENCY
DEPARTMENT OF PUBLIC WORKS
DIVISION OF HIGHWAYS
MONUMENTATION MAP
No. MF-2214-6

Anthony
Deputy District Engineer



	A	R	T	L
19	26°33'57"	2270	47215	92732
21	20°45'25"	2500	45824	90642
22	04°35'11"	2500	10048	20085
23	59°31'31"	650	37170	67529
24	11°56'48"	1000	463	20813

BM No 118-2Lac-58
Elev 100151
Fd brass cap in conc down 04' below
median curbs 37' west of radius point
of nose at C, sta 118.0974 EC (Retrace
Line sta 118.1061 EC)