

# CITY OF LOS ANGELES

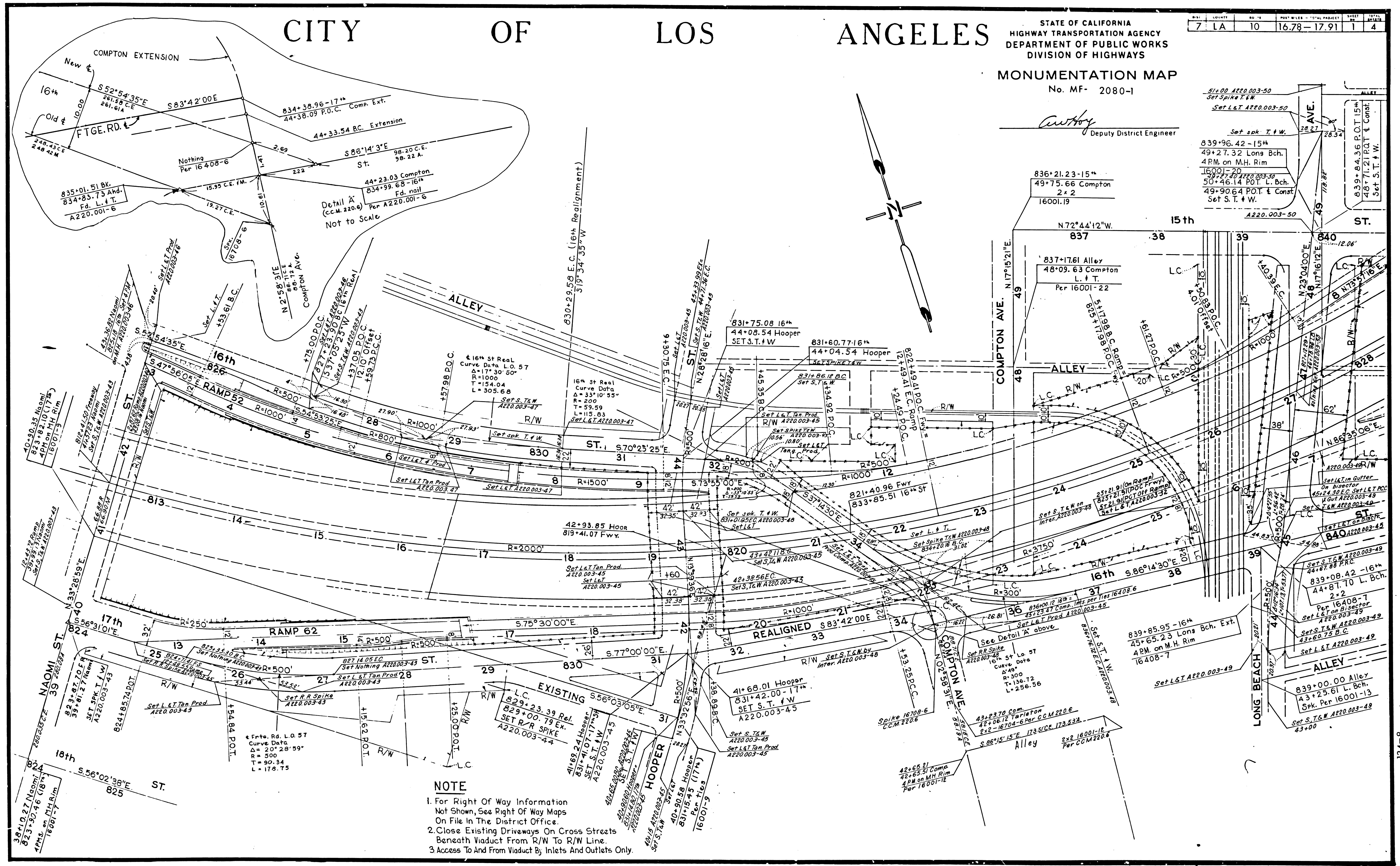
STATE OF CALIFORNIA  
HIGHWAY TRANSPORTATION AGENCY  
DEPARTMENT OF PUBLIC WORKS  
DIVISION OF HIGHWAYS

7	LA	10	16.78-17.91	1	4
---	----	----	-------------	---	---

## MONUMENTATION MAP

No. MF- 2080-1

*Anthony*  
Deputy District Engineer

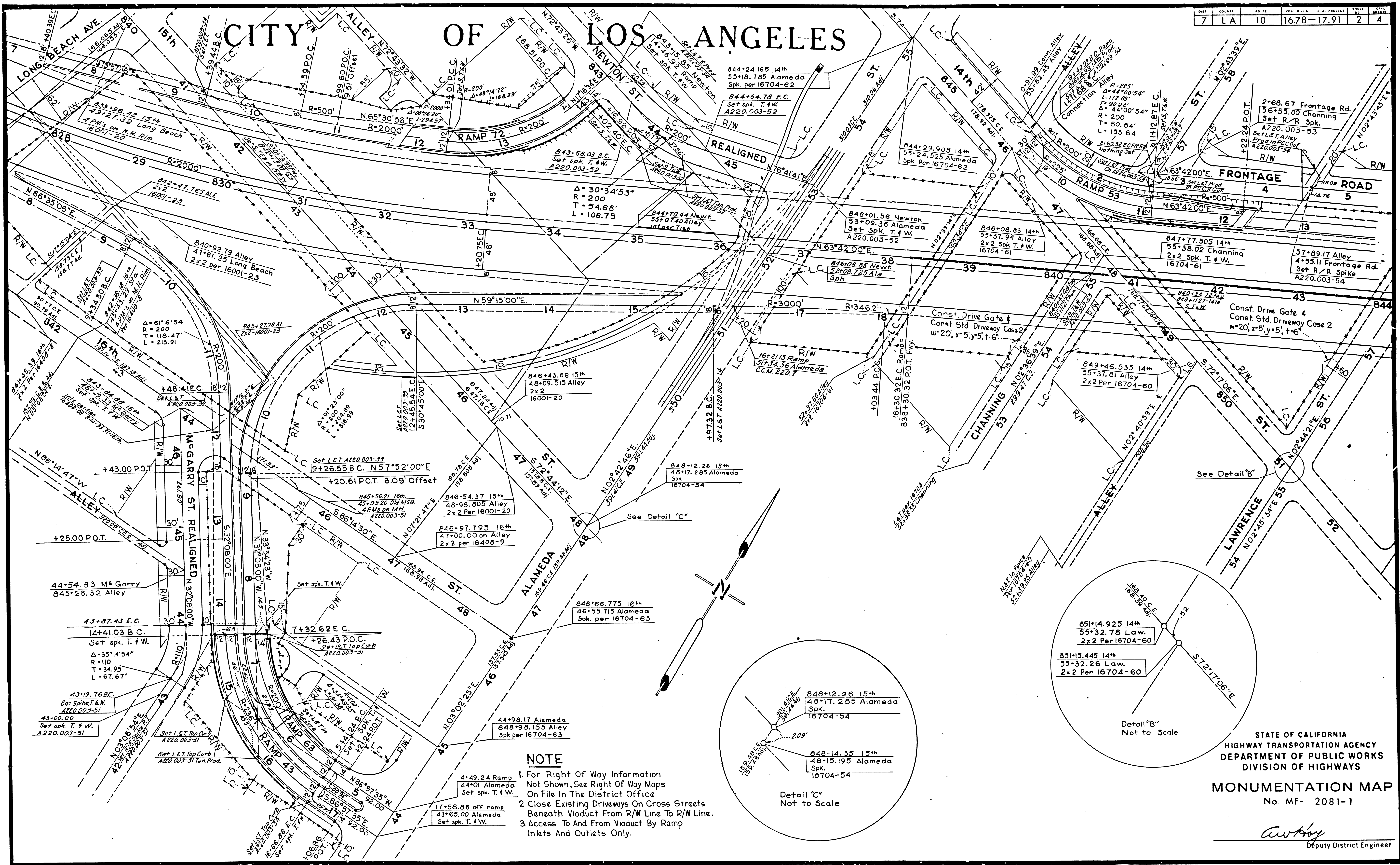


**NOTE**

1. For Right Of Way Information Not Shown, See Right Of Way Maps On File In The District Office.
2. Close Existing Driveways On Cross Streets Beneath Viaduct From R/W To R/W Line.
3. Access To And From Viaduct By Inlets And Outlets Only.

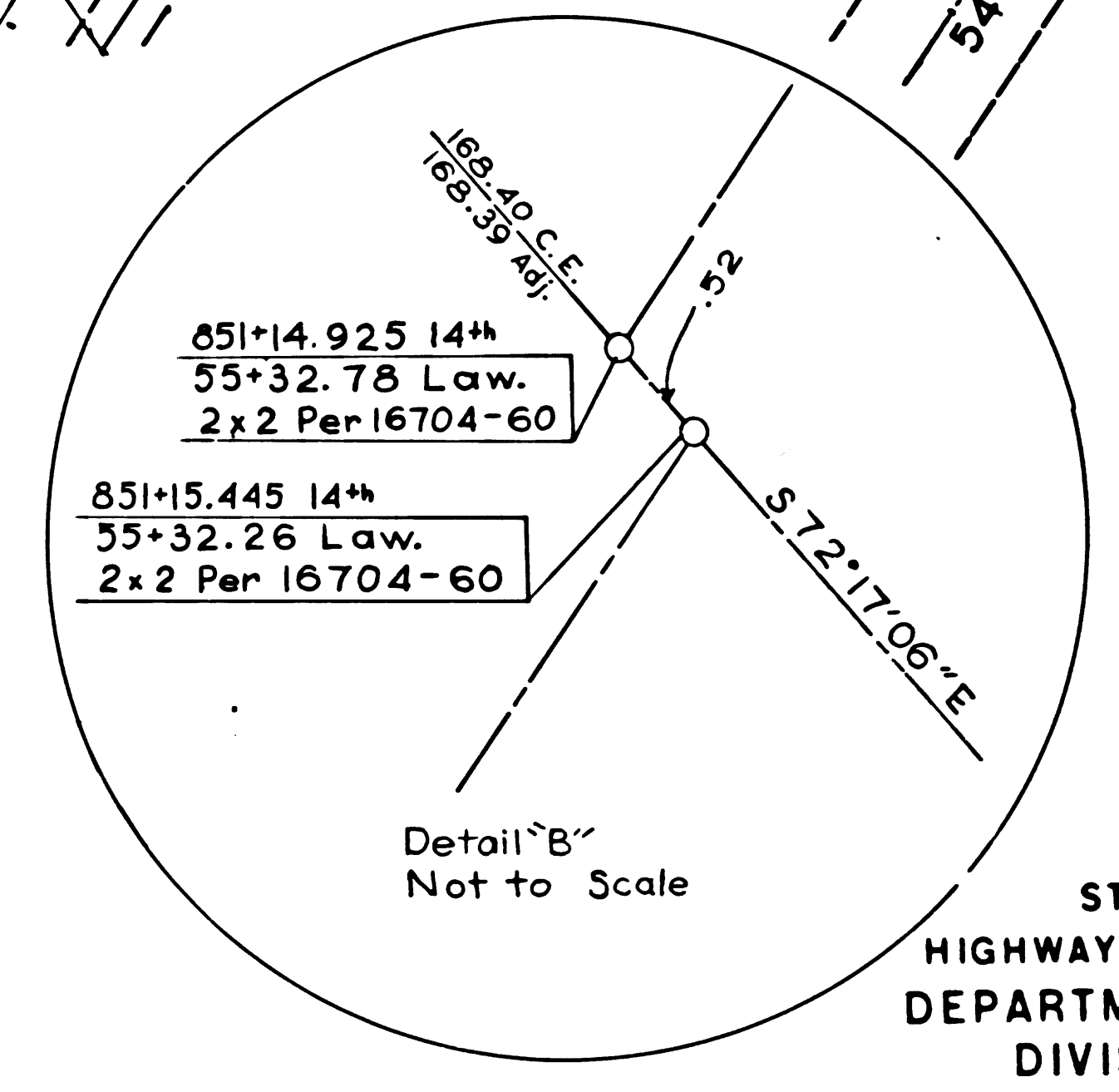
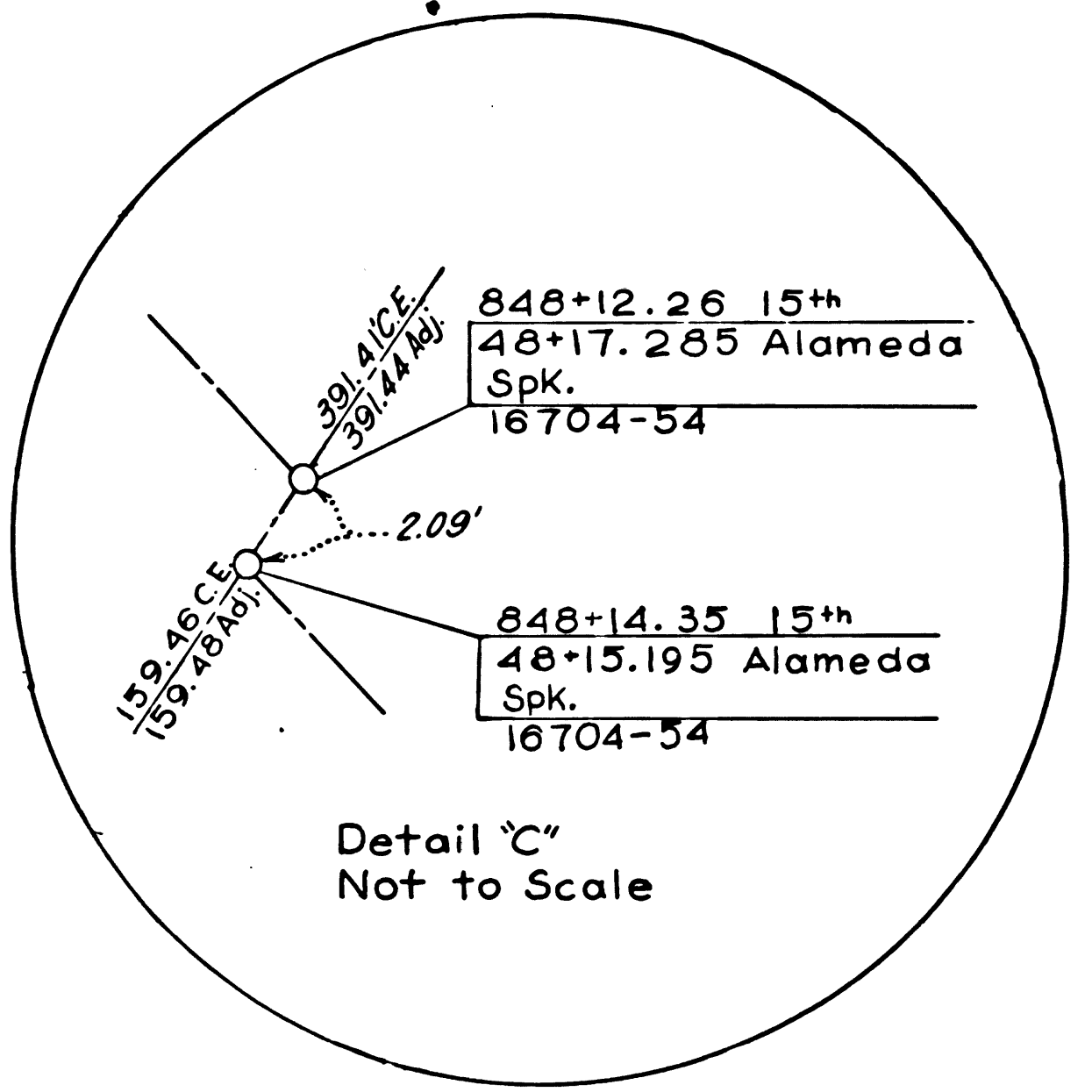
7	LA	10	16.78-17.91	2	4
---	----	----	-------------	---	---

# CITY OF LOS ANGELES



**NOTE**

1. For Right Of Way Information Not Shown, See Right Of Way Maps On File In The District Office
2. Close Existing Driveways On Cross Streets Beneath Viaduct From R/W Line To R/W Line.
3. Access To And From Viaduct By Ramp Inlets And Outlets Only.



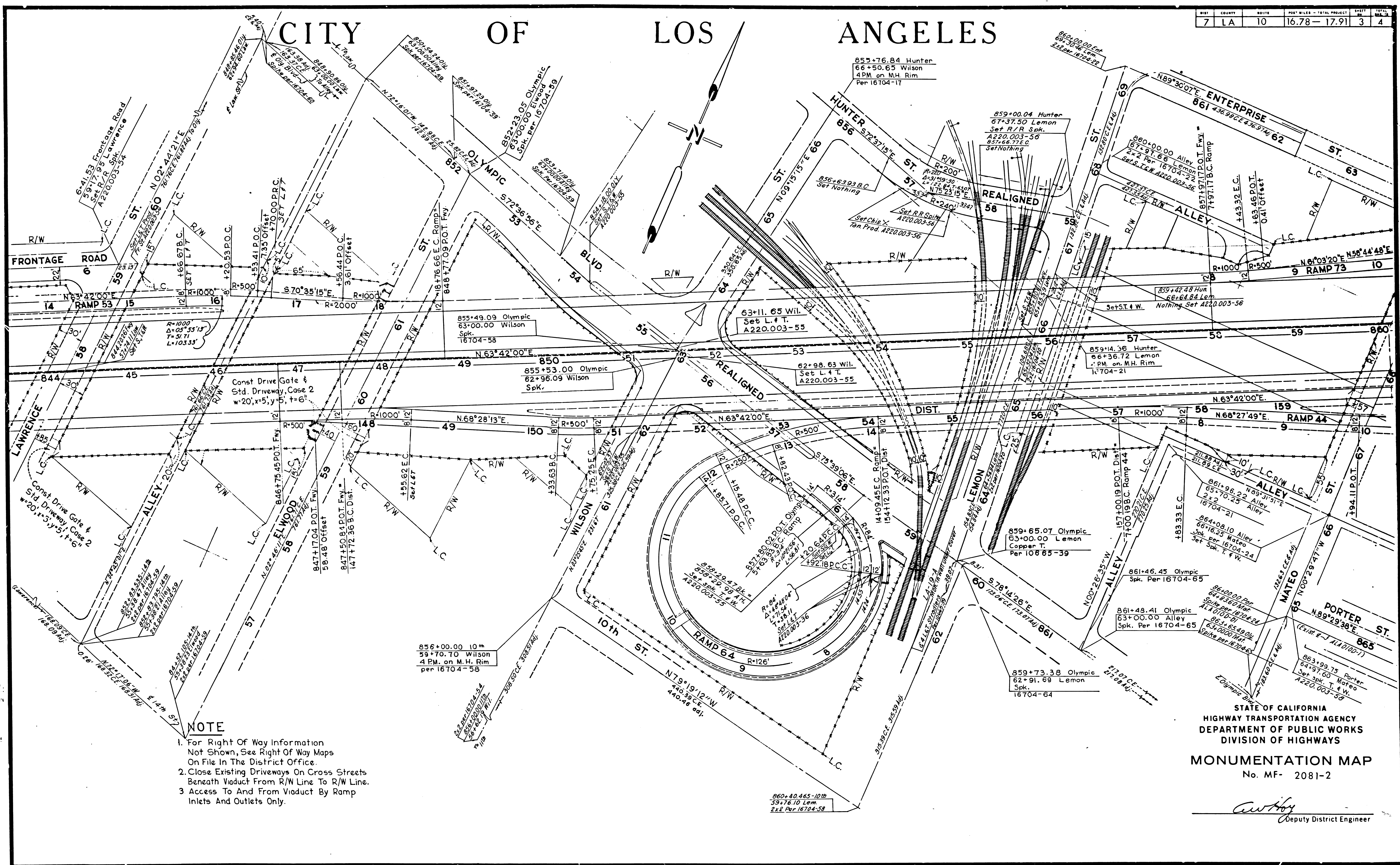
STATE OF CALIFORNIA  
HIGHWAY TRANSPORTATION AGENCY  
DEPARTMENT OF PUBLIC WORKS  
DIVISION OF HIGHWAYS

**MONUMENTATION MAP**  
No. MF- 2081-1

*Autrey*  
Deputy District Engineer

# CITY OF LOS ANGELES

7	LA	10	16.78 - 17.91	3	4
---	----	----	---------------	---	---



**NOTE**

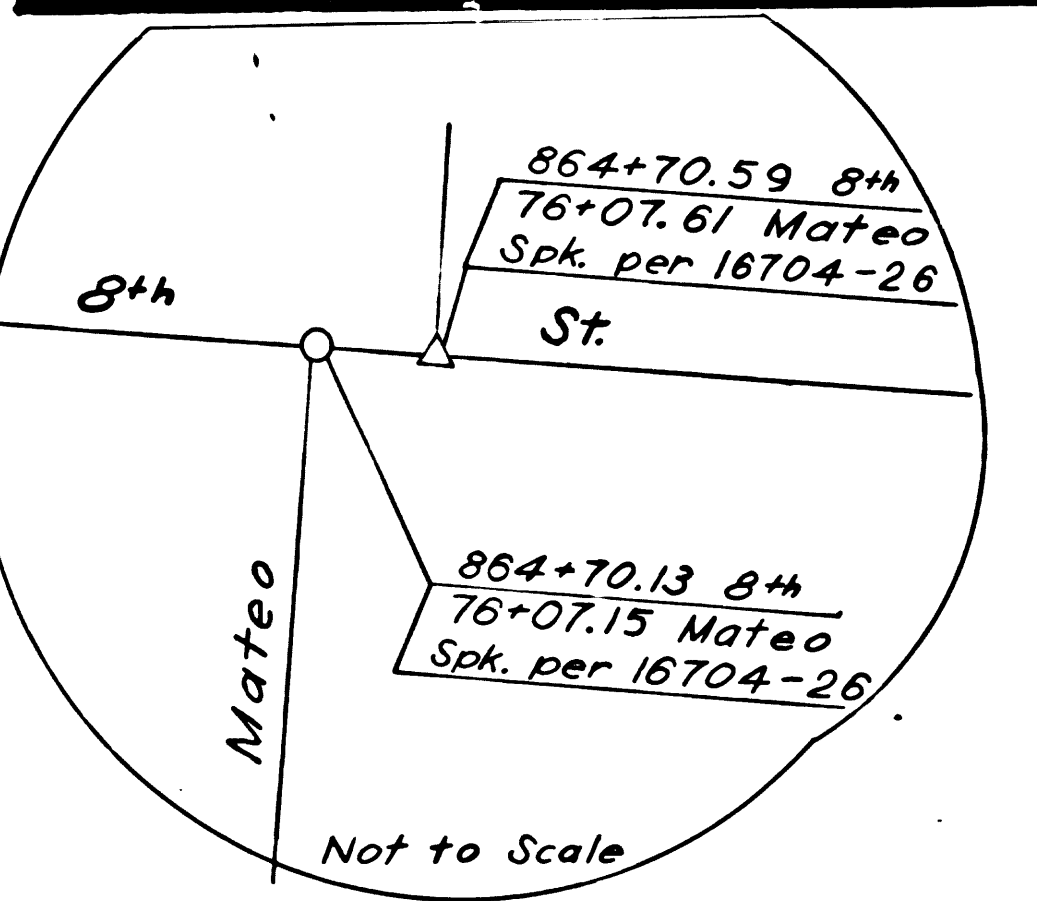
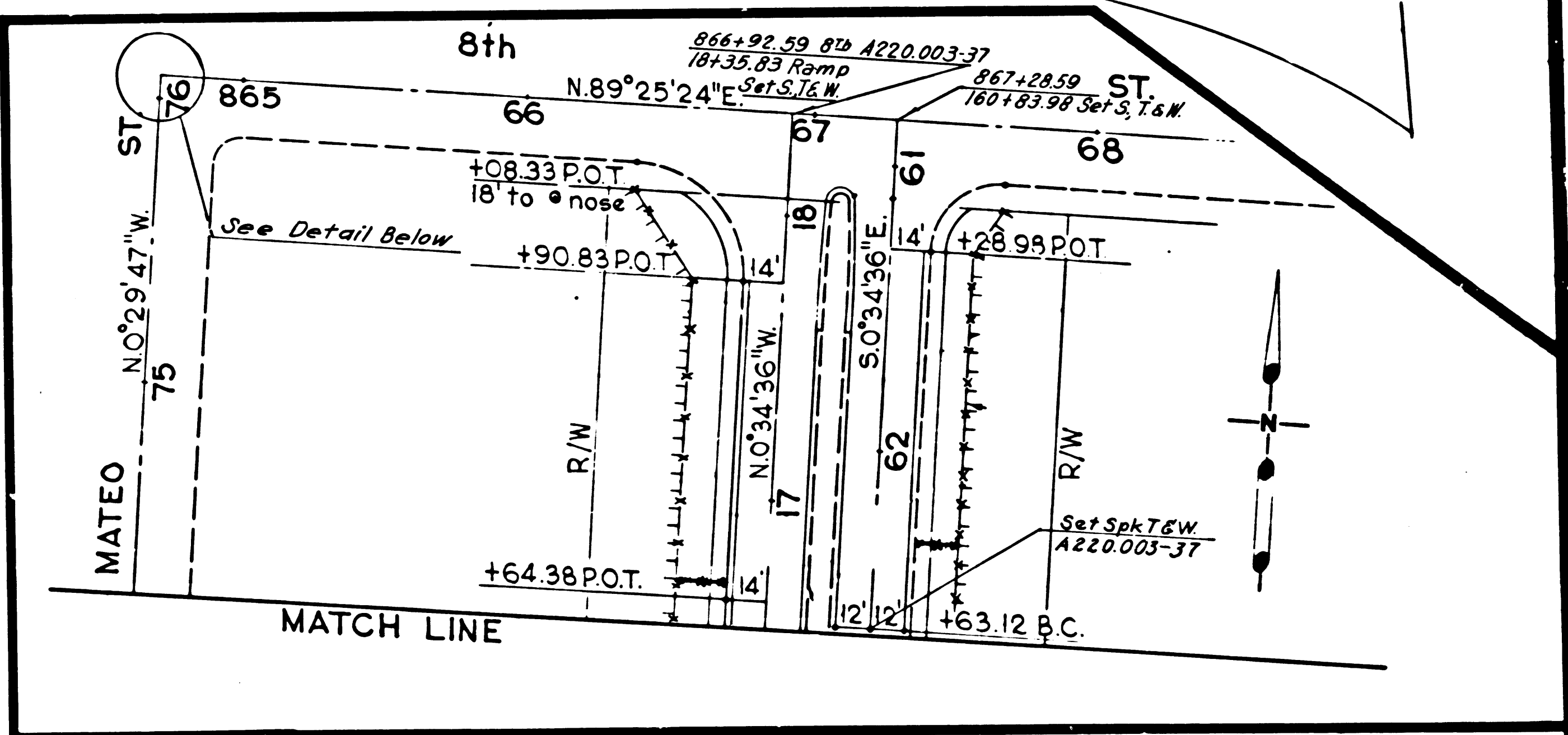
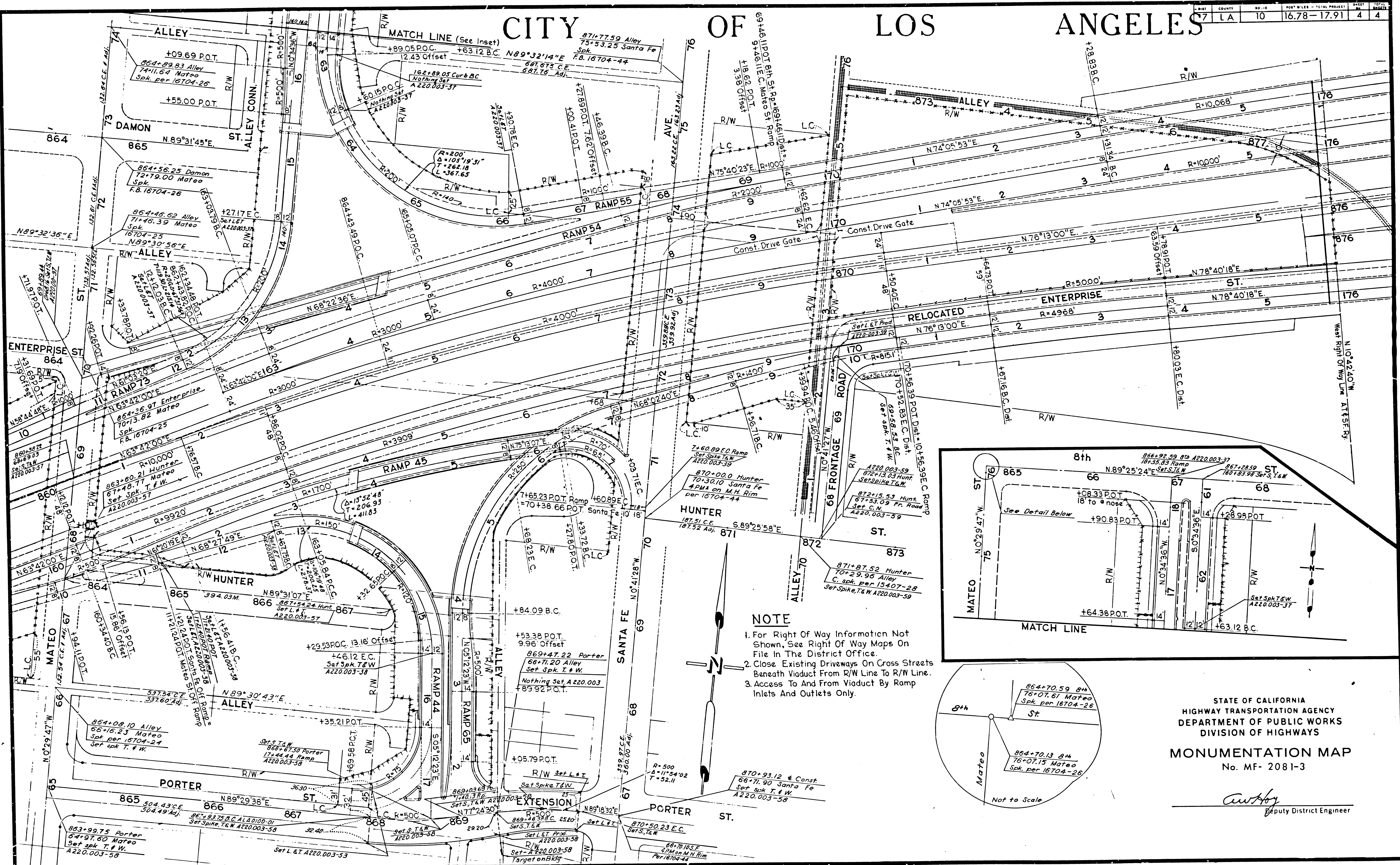
1. For Right Of Way Information Not Shown, See Right Of Way Maps On File In The District Office.
2. Close Existing Driveways On Cross Streets Beneath Viaduct From R/W Line To R/W Line.
3. Access To And From Viaduct By Ramp Inlets And Outlets Only.

STATE OF CALIFORNIA  
 HIGHWAY TRANSPORTATION AGENCY  
 DEPARTMENT OF PUBLIC WORKS  
 DIVISION OF HIGHWAYS  
**MONUMENTATION MAP**  
 No. MF- 2081-2

*awhy*  
 Deputy District Engineer

# CITY OF LOS ANGELES

LA	10	16.78-17.91	4	4
----	----	-------------	---	---



STATE OF CALIFORNIA  
HIGHWAY TRANSPORTATION AGENCY  
DEPARTMENT OF PUBLIC WORKS  
DIVISION OF HIGHWAYS

**MONUMENTATION MAP**  
No. MF-2081-3

*Anthony*  
Deputy District Engineer