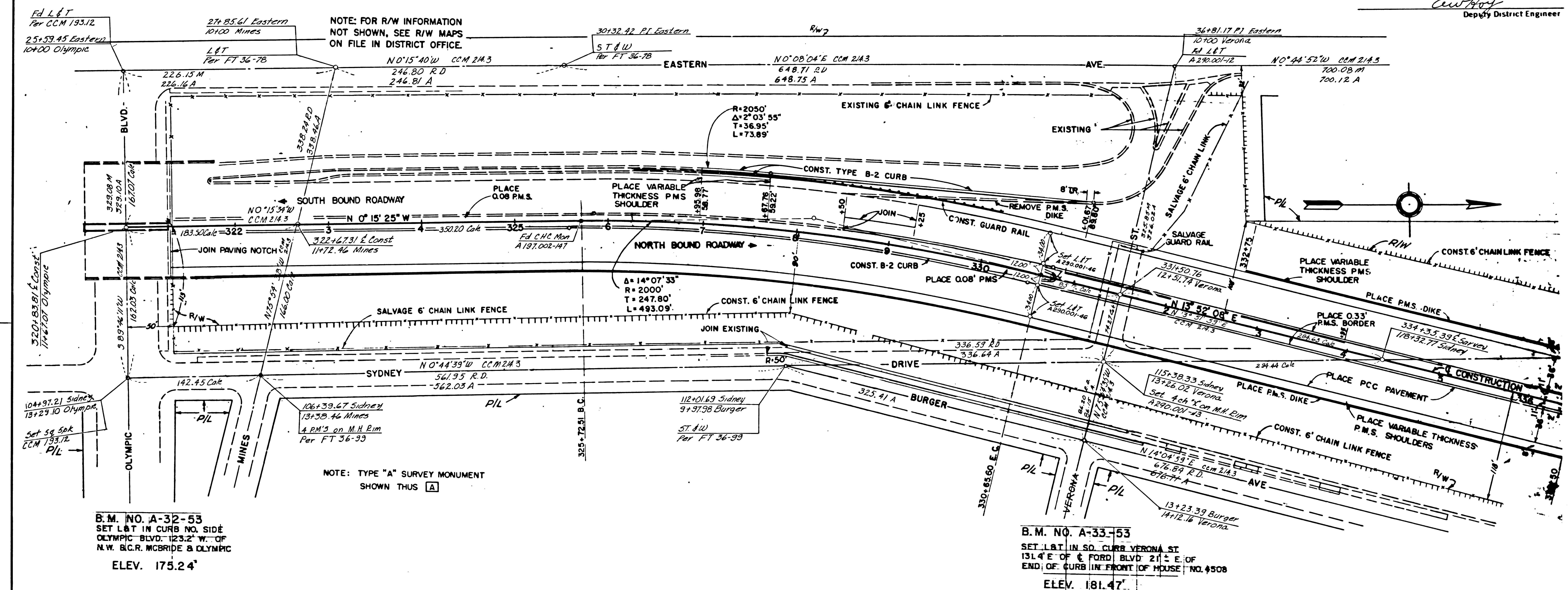


DIST	COUNTY	ROUTE	POST MILE - TOTAL PROJECT	SHEET NO.	TOTAL SHEETS
7	LA	7	23.55 / 26.47	1	13

STATE OF CALIFORNIA  
HIGHWAY TRANSPORTATION AGENCY  
DEPARTMENT OF PUBLIC WORKS  
DIVISION OF HIGHWAYS  
**MONUMENTATION MAP**  
No. MF-1526-1

*C. W. Boy*  
Deputy District Engineer

NOTE: FOR R/W INFORMATION  
NOT SHOWN, SEE R/W MAPS  
ON FILE IN DISTRICT OFFICE.



B.M. NO. A-32-53  
SET L&T IN CURB NO. SIDE  
OLYMPIC BLVD. 123.2' W. OF  
N.W. C.R. MCBRIDE & OLYMPIC  
ELEV. 175.24'

B.M. NO. A-33-53  
SET L&T IN SO. CURB VERONA ST.  
131.4' E. OF FORD BLVD. 21' ± E. OF  
END OF CURB IN FRONT OF HOUSE NO. 4508  
ELEV. 181.47'

NO.	LA	7	23.55 / 26.47	2	13
-----	----	---	---------------	---	----

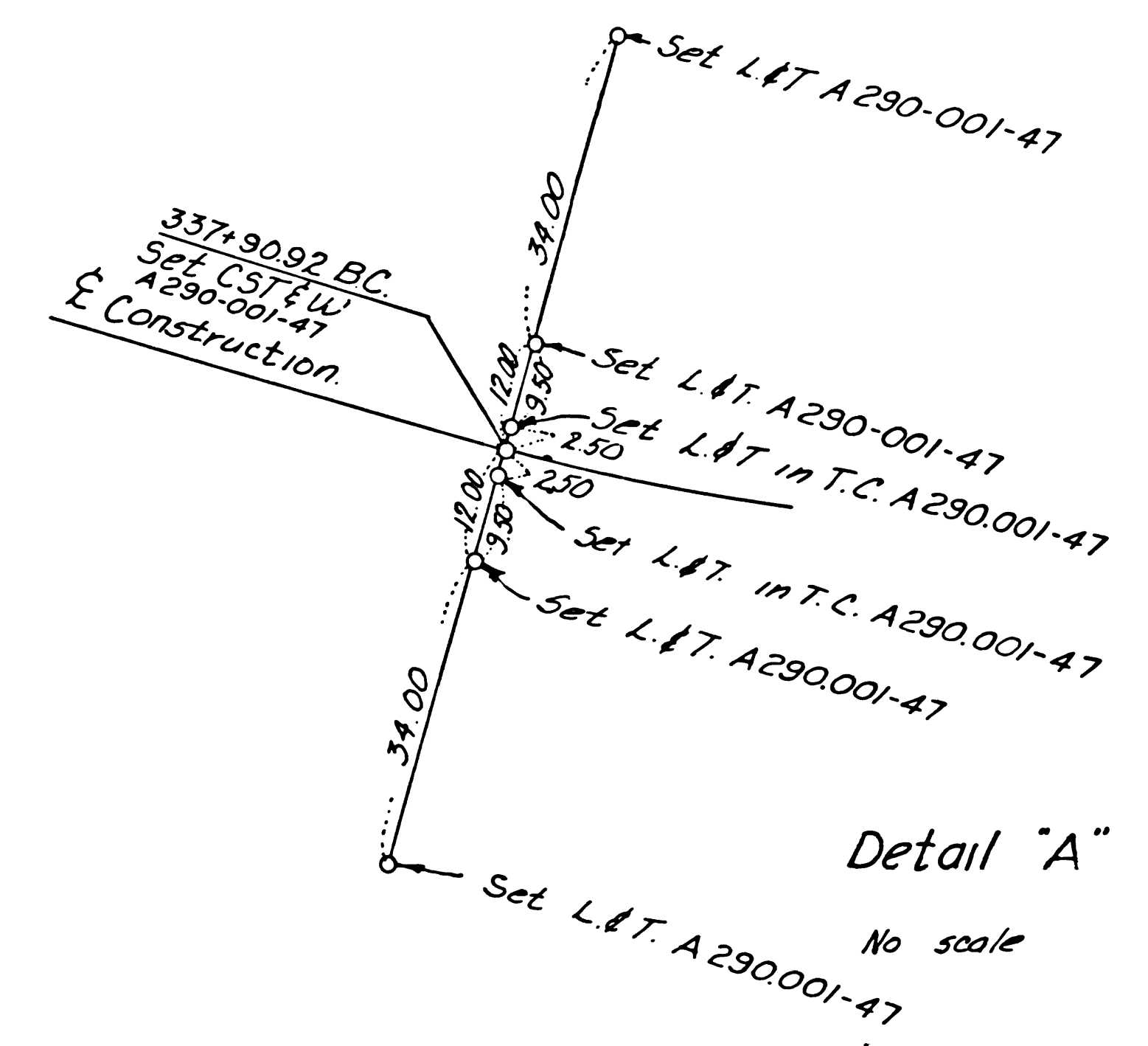
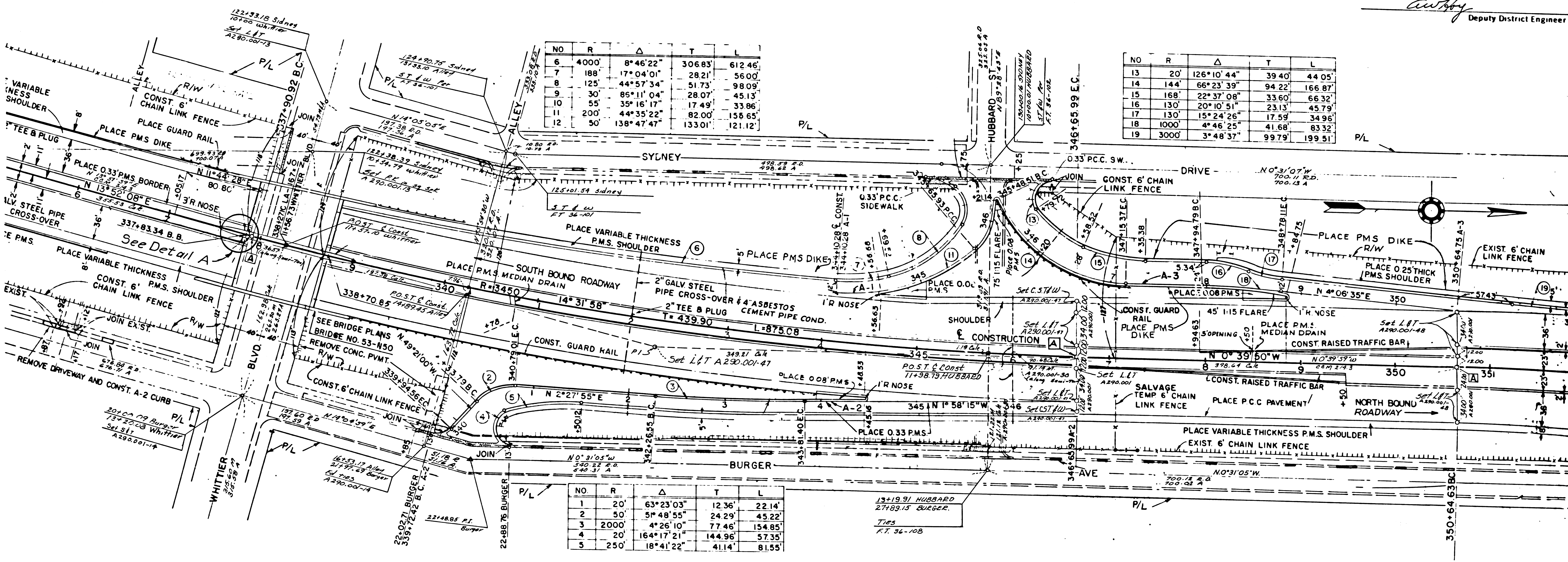
STATE OF CALIFORNIA  
HIGHWAY TRANSPORTATION AGENCY  
DEPARTMENT OF PUBLIC WORKS  
DIVISION OF HIGHWAYS  
**MONUMENTATION MAP**  
No. MF-1526-2

*Anthony*  
Deputy District Engineer

NO	R	Δ	T	L
6	4000'	8°46'22"	306.83'	612.46'
7	188'	17°04'01"	28.21'	56.00'
8	125'	44°57'34"	51.73'	98.09'
9	30'	85°11'04"	28.07'	45.13'
10	55'	35°16'17"	17.49'	33.86'
11	200'	44°35'22"	82.00'	156.65'
12	50'	138°47'47"	133.01'	121.12'

NO	R	Δ	T	L
13	20'	126°10'44"	39.40'	44.05'
14	144'	66°23'39"	94.22'	166.87'
15	168'	22°37'08"	33.60'	66.32'
16	130'	20°10'51"	23.13'	45.79'
17	130'	15°24'26"	17.59'	34.96'
18	1000'	4°46'25"	41.68'	83.32'
19	3000'	3°48'37"	99.79'	199.51'

NO	R	Δ	T	L
1	20'	63°23'03"	12.36'	22.14'
2	50'	51°48'55"	24.29'	45.22'
3	2000'	4°26'10"	77.46'	154.85'
4	20'	164°17'21"	144.96'	57.35'
5	250'	18°41'22"	41.14'	81.55'





DIST.	COUNTY	ROUTE	POST MILES - TOTAL PROJECT	SHEET NO.	TOTAL SHEETS
7	LA	7	23.55/26.47	4	13

STATE OF CALIFORNIA  
HIGHWAY TRANSPORTATION AGENCY  
DEPARTMENT OF PUBLIC WORKS  
DIVISION OF HIGHWAYS  
**MONUMENTATION MAP**  
No. MF-1526-4

*Anthony*  
Deputy District Engineer

