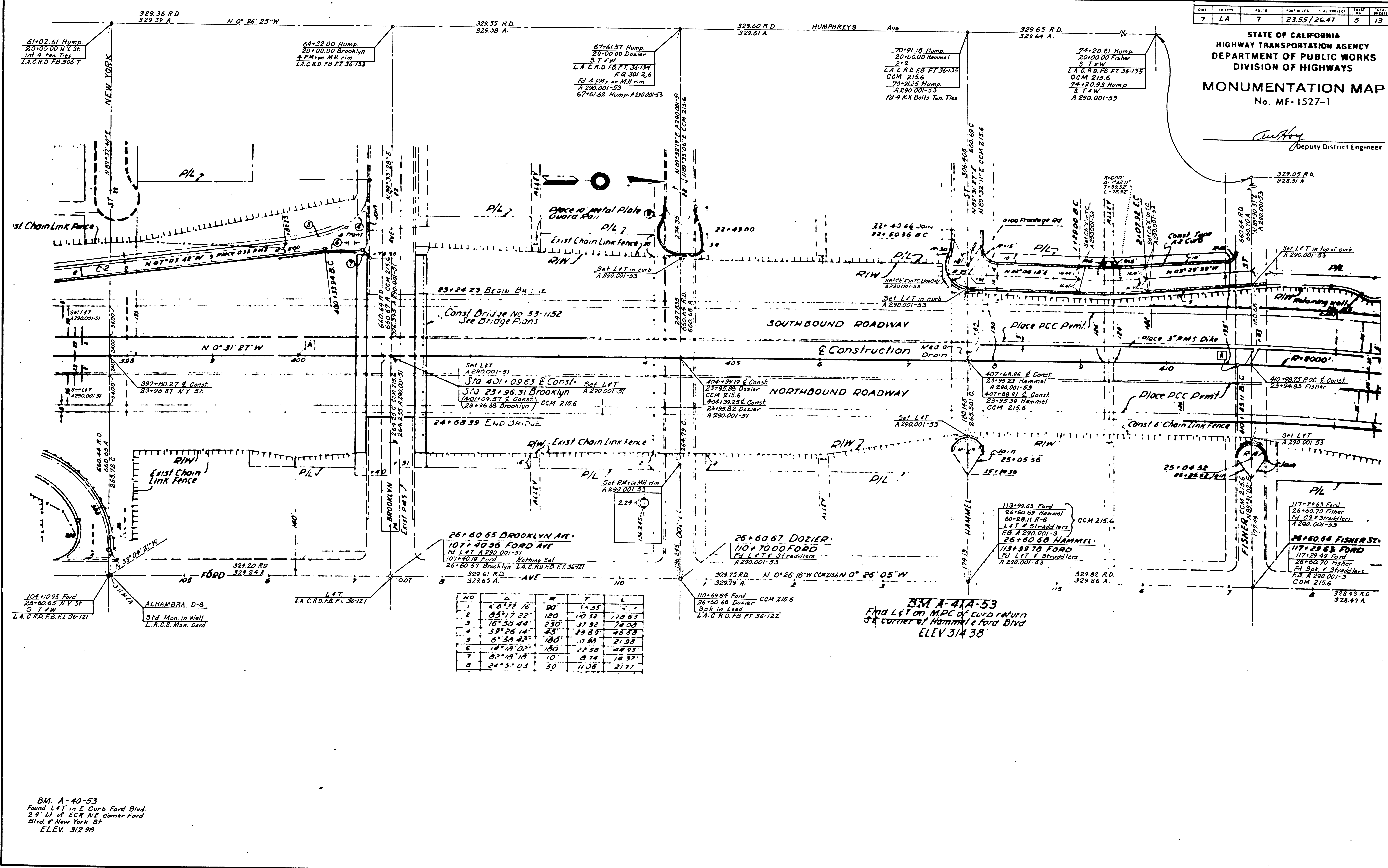


DIST	COUNTY	ROUTE	POST MILES - TOTAL PROJECT	SHEET	TOTAL SHEETS
7	LA	7	23.55/26.47	5	13

STATE OF CALIFORNIA  
HIGHWAY TRANSPORTATION AGENCY  
DEPARTMENT OF PUBLIC WORKS  
DIVISION OF HIGHWAYS  
**MONUMENTATION MAP**  
No. MF-1527-1

*Deputy District Engineer*  
Deputy District Engineer



NO	Δ	θ	Δ	θ	L
1	10.22	18°	50	1.35	-
2	85.17	22°	120	10.52	178.83
3	18.53	48°	250	31.92	242.03
4	38.26	14°	43	43.60	46.88
5	6.30	43°	180	11.80	21.98
6	14.18	02°	100	22.58	48.93
7	82.18	18°	10	8.74	14.37
8	24.51	03°	30	11.08	21.71

BM A-40-53  
Found L&T in E Curb Ford Blvd.  
2.9' Lt. of ECR NE corner Ford  
Blvd & New York St.  
ELEV. 312.98

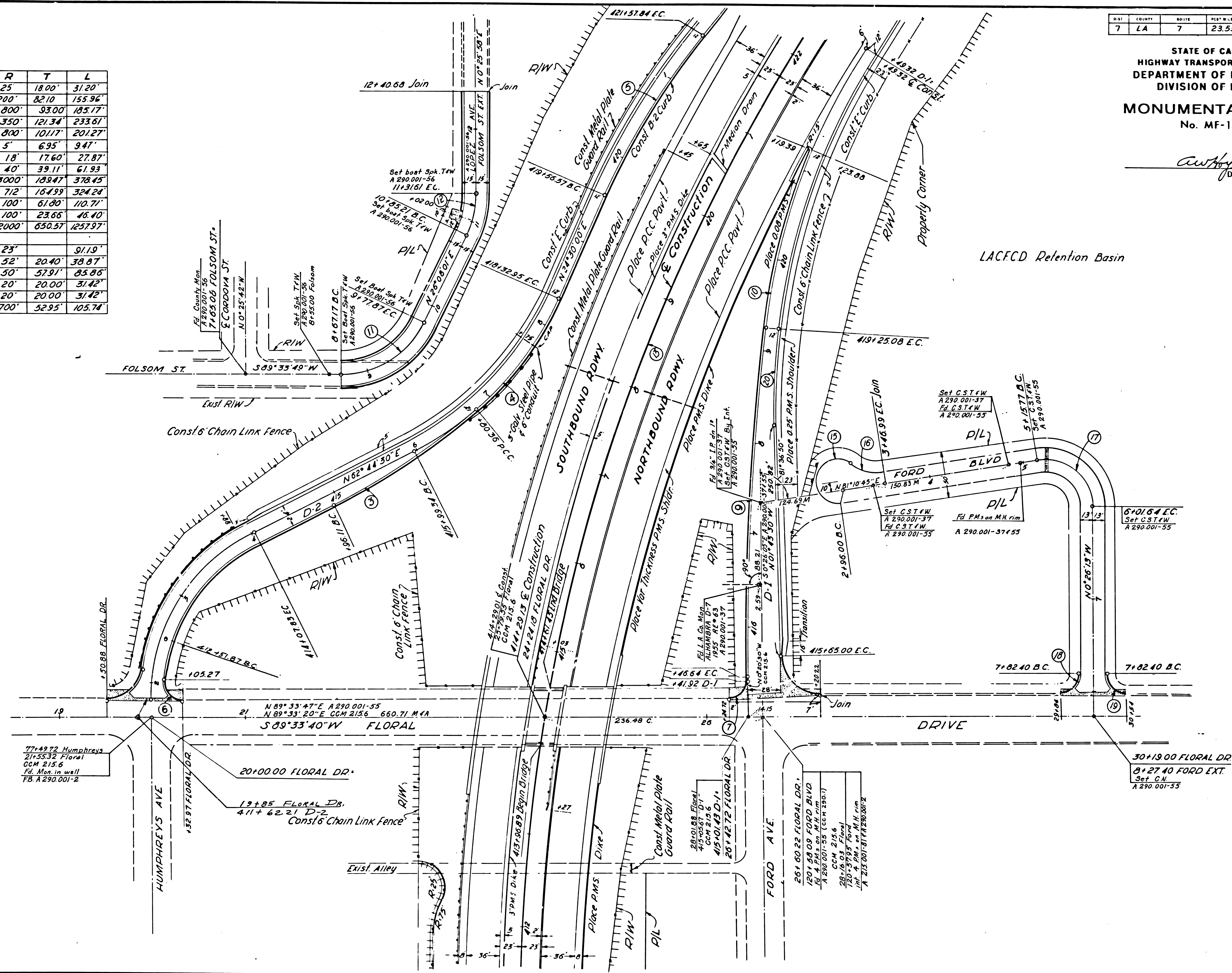
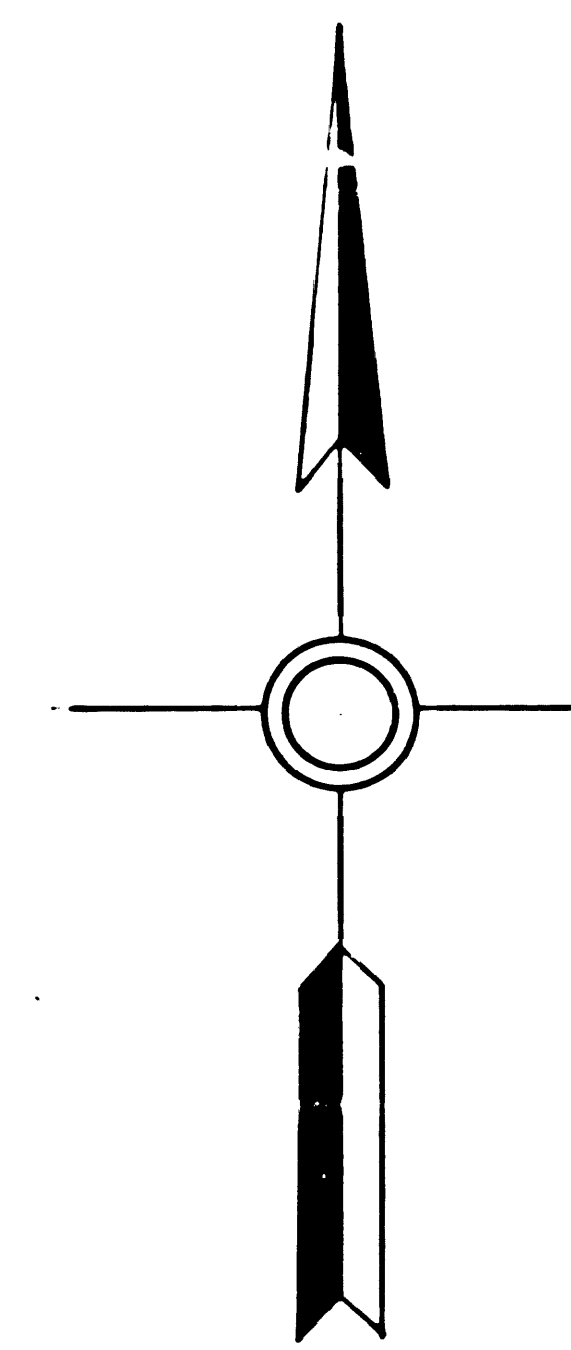
BM A-41A-53  
Found L&T on MPC of CURB RETURN  
at corner of Hammel & Ford Blvd  
ELEV 314.38

NO.	Δ	R	T	L
1	71°30'00"	25	18.00	31.20
2	44°40'50"	200	82.10	155.96
3	13°15'42"	800	93.00	185.17
4	38°14'30"	350	121.34	233.61
5	14°24'54"	800	101.17	201.27
6	104°30'00"	5	6.95	9.47
7	89°59'45"	18	17.60	27.87
8	89°59'45"	40	39.11	61.93
9	07°15'40"	3000	189.47	378.95
10	26°05'33"	712	164.99	324.24
11	63°23'48"	100	61.00	110.71
12	26°34'29"	100	23.66	46.40
13	36°02'17"	2000	650.57	1257.97
14				
15	227°10'00"	23		31.19
16	42°50'00"	52	20.40	38.87
17	98°23'02"	50	57.91	85.86
18	90°00'00"	20	20.00	31.42
19	90°00'00"	20	20.00	31.42
20	08°39'17"	700	52.95	105.74

POST	COUNTY	ROUTE	POST MILES - TOTAL PROJECT	POST MILES - THIS SHEET	TOTAL SHEETS
7	LA	7	23.55/26.47	6	13

STATE OF CALIFORNIA  
HIGHWAY TRANSPORTATION AGENCY  
DEPARTMENT OF PUBLIC WORKS  
DIVISION OF HIGHWAYS  
**MONUMENTATION MAP**  
No. MF-1527-2

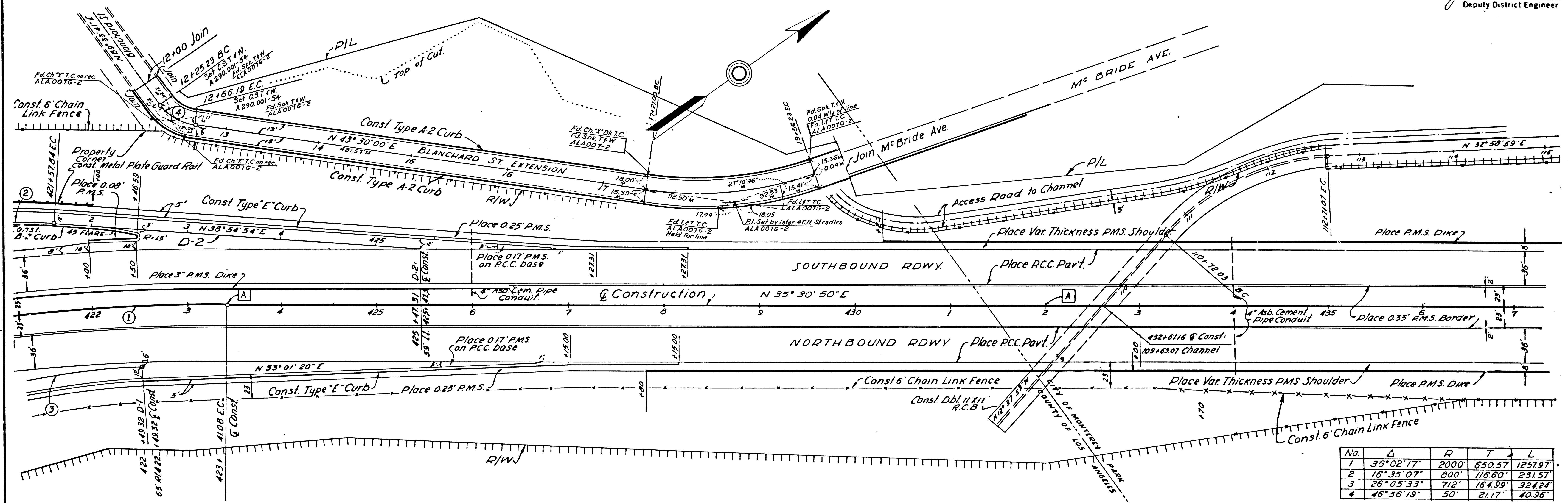
*Anthony*  
Deputy District Engineer



DATE	COUNTY	NO. 14	POST M. 11	TOTAL PROJECT	SHEET	TOTAL SHEETS
7	LA	7	23.55	26.47	7	13

STATE OF CALIFORNIA  
HIGHWAY TRANSPORTATION AGENCY  
DEPARTMENT OF PUBLIC WORKS  
DIVISION OF HIGHWAYS  
**MONUMENTATION MAP**  
No. MF-1527-3

*Anthony*  
Deputy District Engineer



No.	Δ	R	T	L
1	36° 02' 17"	2000'	650.57'	1257.97'
2	16° 35' 07"	800'	116.60'	231.57'
3	26° 05' 33"	712'	164.99'	324.24'
4	46° 56' 19"	50'	21.17'	40.96'

A-43-53  
Set cut spk. & W. in old P.M. Rd.  
35' SW P.P. = 348.002 E 80' W. of  
E.C. Dump Road.  
ELEV. 319.80'

A-44-53  
Set brass disk in conc. E. of dump  
2d. 125' S.E. of Gate 50' E. of Red  
& White Painted fence post  
ELEV. 393.34'