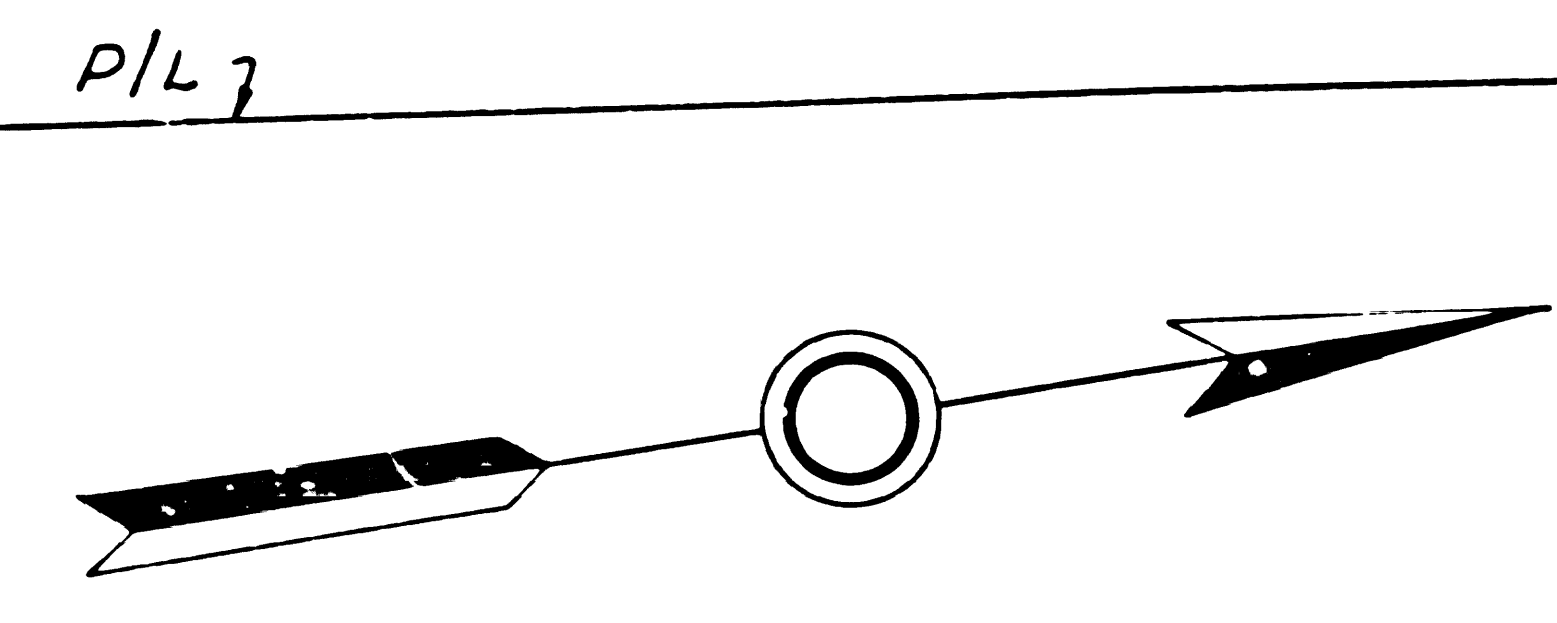


DIST	COUNTY	ROUTE	POST MILE - TOTAL PROJECT	SHEET NO.	TOTAL SHEETS
7	LA	7	23.55 / 26.47	8	13

STATE OF CALIFORNIA
HIGHWAY TRANSPORTATION AGENCY
DEPARTMENT OF PUBLIC WORKS
DIVISION OF HIGHWAYS
MONUMENTATION MAP
No. MF-1528-1

C. W. Hoyle
Deputy District Engineer

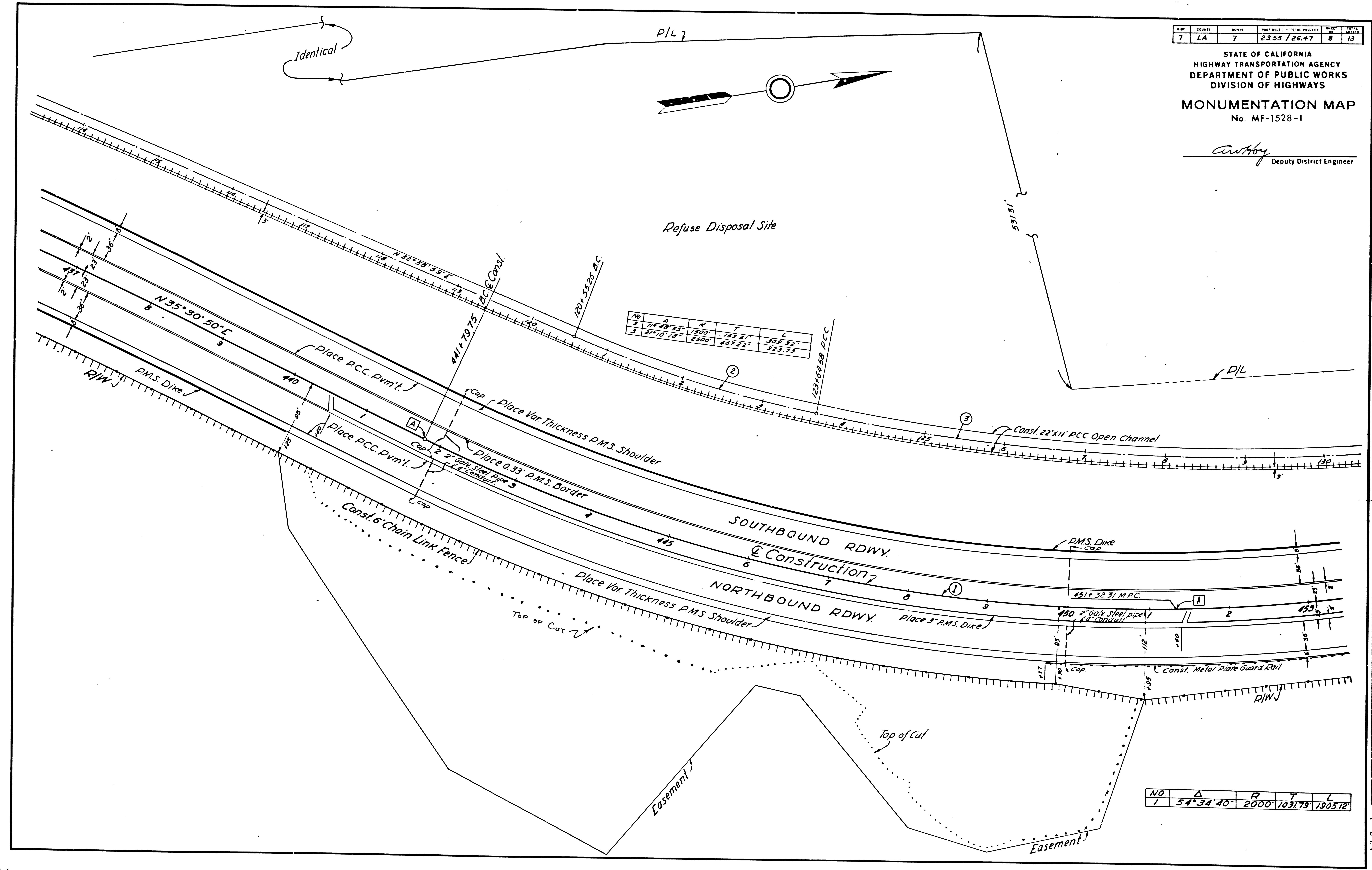


Identical

Refuse Disposal Site

NO.	Δ	R	T	L
2	118°48'53"	1500'	155.21'	309.82'
3	81°10'18"	2500'	467.22'	923.73'

NO.	Δ	R	T	L
1	54°34'40"	2000'	1031.78'	1905.12'



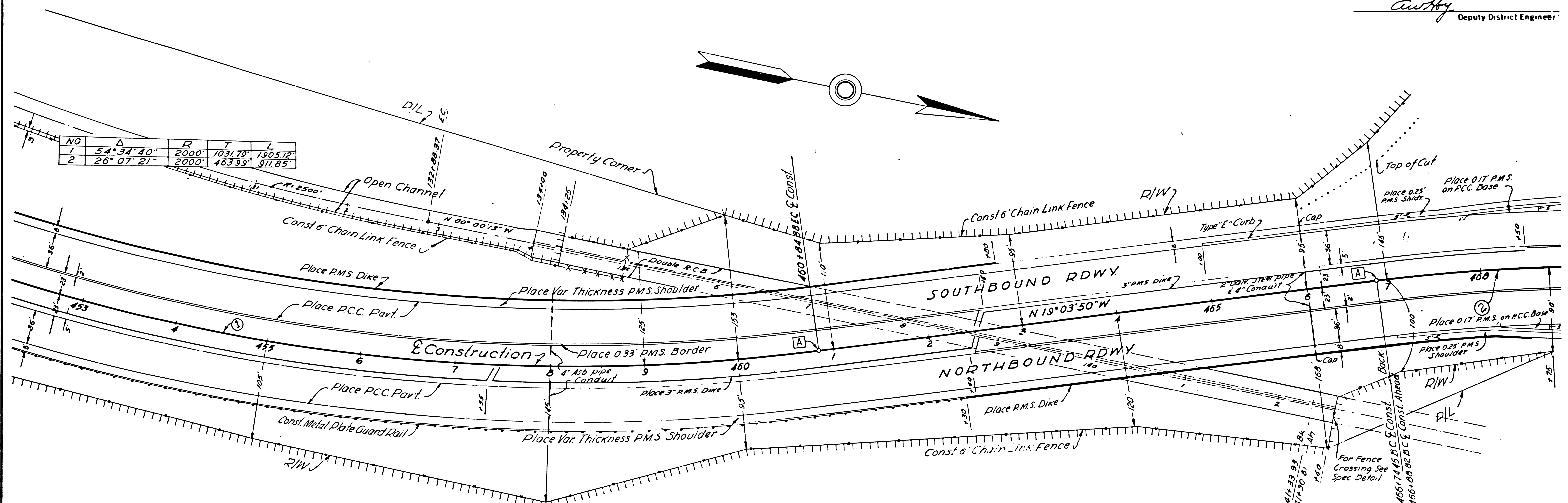
F.M.20594 -SHT. 1

NO.	DATE	BY	REV.	TOTAL PROJECT	SHEET NO.	TOTAL SHEETS
7	LA	7		2355/26.47	9	13

STATE OF CALIFORNIA
HIGHWAY TRANSPORTATION AGENCY
DEPARTMENT OF PUBLIC WORKS
DIVISION OF HIGHWAYS
MONUMENTATION MAP
No. MF-1528-2

C. W. Kelly
Deputy District Engineer

NO	Δ	R	T	L
1	54°34'40"	2000	1031.70	1905.72
2	26°07'21"	2000	463.99	911.85



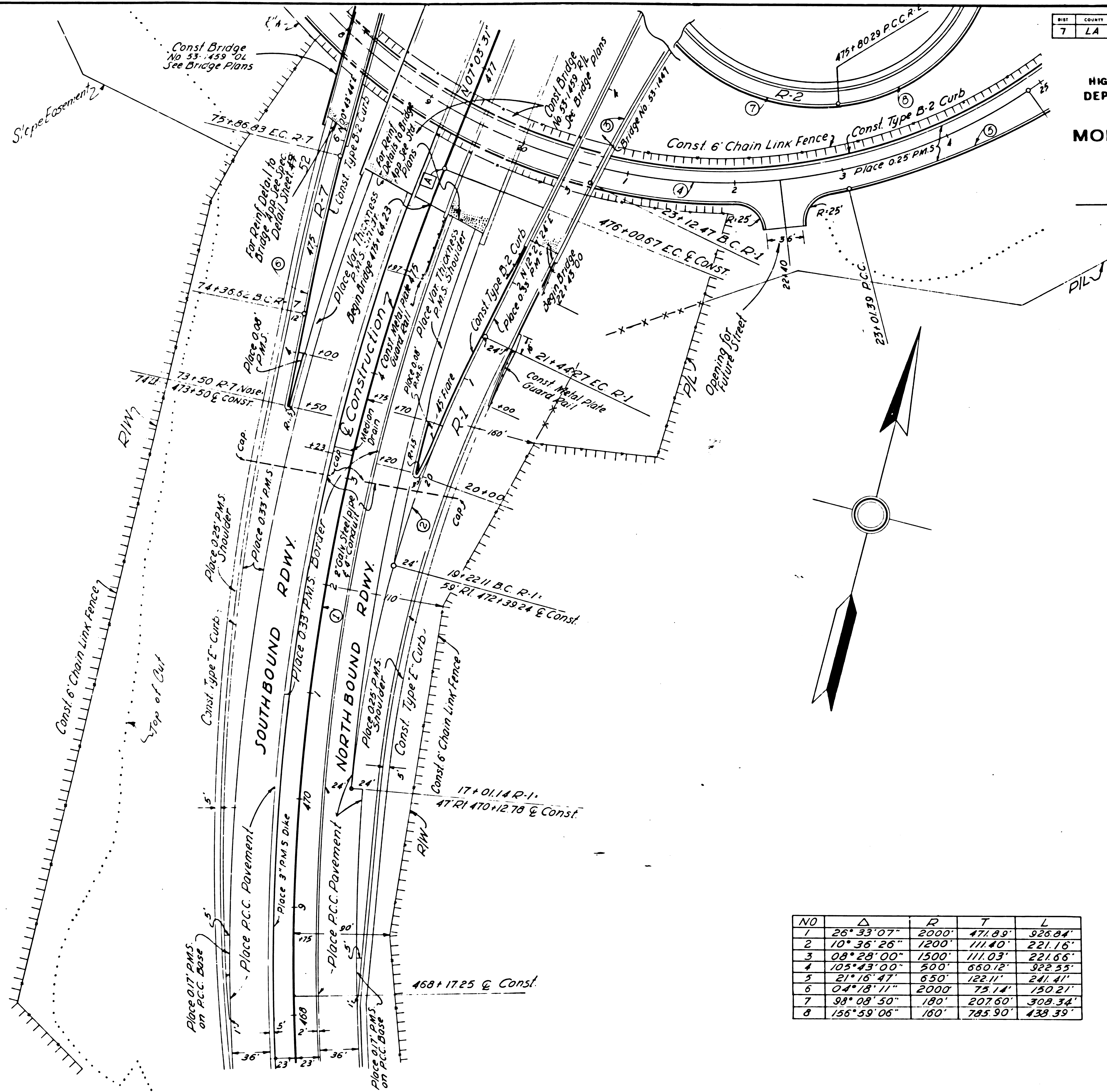
A-45-53
Fd. City of L.A. Triangulation Mon.
in conc. 105' N. Fence Line, & 300'
W. fence line 6.0' S. yellow 2" I.P. marker
(stamped ALHEG)
ELEV. 468.47'

A-46-53
Set brass disk in conc. W. of int.
fences 4' W. of Red & White painted
fence post marker, so. end of Higgins
Brickyard
ELEV. 386.10'

DIST	COUNTY	ROUTE	POST MILES - TOTAL PROJECT	SHEET NO.	TOTAL SHEETS
7	LA	7	23.55 / 26.47	10	13

STATE OF CALIFORNIA
HIGHWAY TRANSPORTATION AGENCY
DEPARTMENT OF PUBLIC WORKS
DIVISION OF HIGHWAYS
MONUMENTATION MAP
No. MF-1528-3

C. W. H. H.
Deputy District Engineer



NO	Δ	P	T	L
1	26° 33' 07"	2000'	471.89'	326.84'
2	10° 36' 26"	1200'	111.40'	221.16'
3	08° 28' 00"	1500'	111.03'	221.66'
4	105° 43' 00"	500'	650.12'	322.55'
5	21° 16' 47"	650'	122.11'	241.41'
6	04° 18' 11"	2000'	75.14'	150.21'
7	98° 08' 50"	180'	207.60'	309.34'
8	156° 59' 06"	160'	785.90'	438.39'

NOTE: FOR RIW INFORMATION
NOT SHOWN, SEE RIW MAPS
ON FILE IN DISTRICT OFFICE

Southerly R/W Line Pacific Electric Railroad

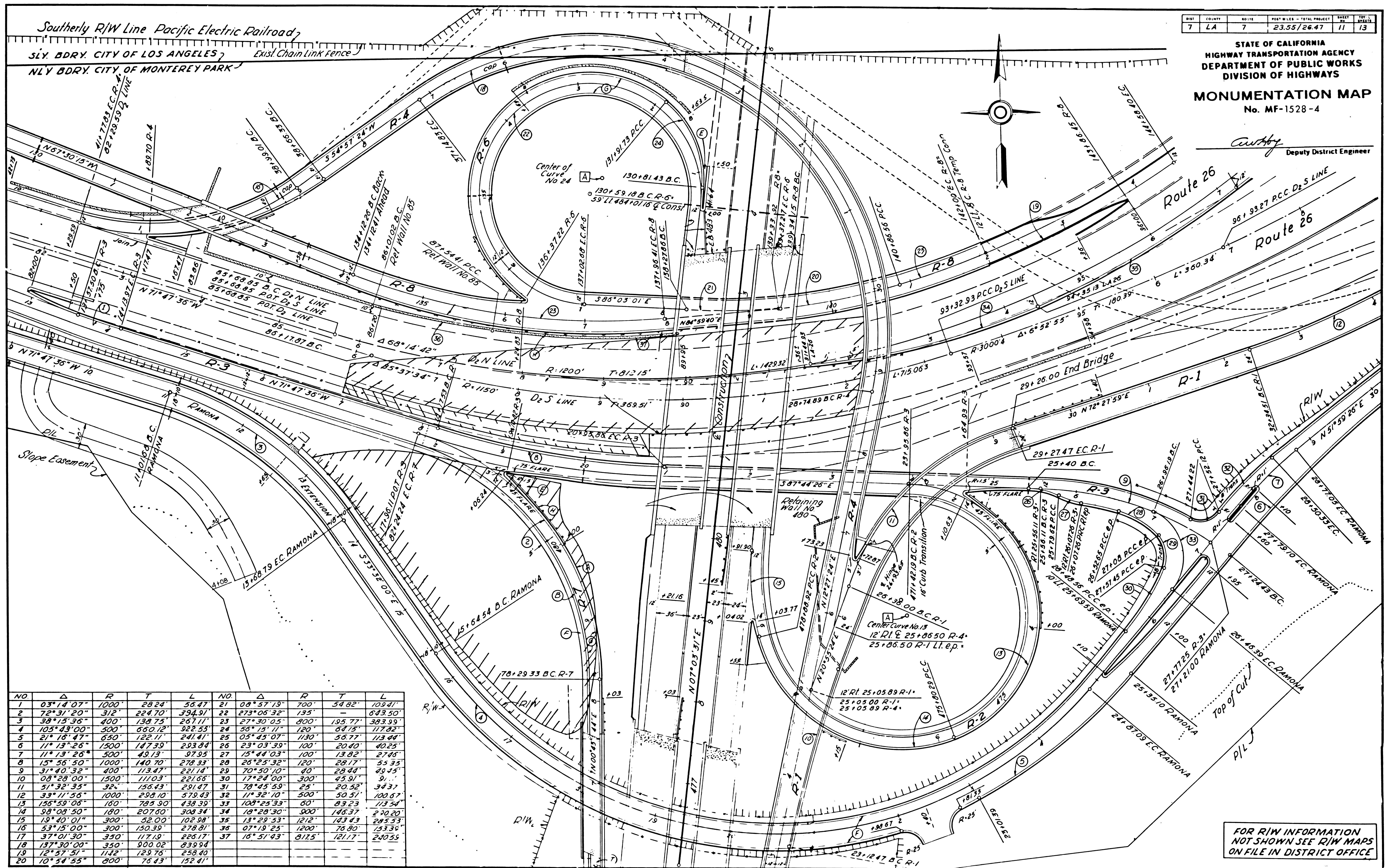
S.W. BDRY. CITY OF LOS ANGELES
 N.W. BDRY. CITY OF MONTEREY PARK

DIST	COUNTY	ROUTE	POST MILES - TOTAL PROJECT	SHEET NO.	TOTAL SHEETS
7	LA	7	23.55/26.47	11	13

STATE OF CALIFORNIA
 HIGHWAY TRANSPORTATION AGENCY
 DEPARTMENT OF PUBLIC WORKS
 DIVISION OF HIGHWAYS

MONUMENTATION MAP
 No. MF-1528-4

Cutler
 Deputy District Engineer



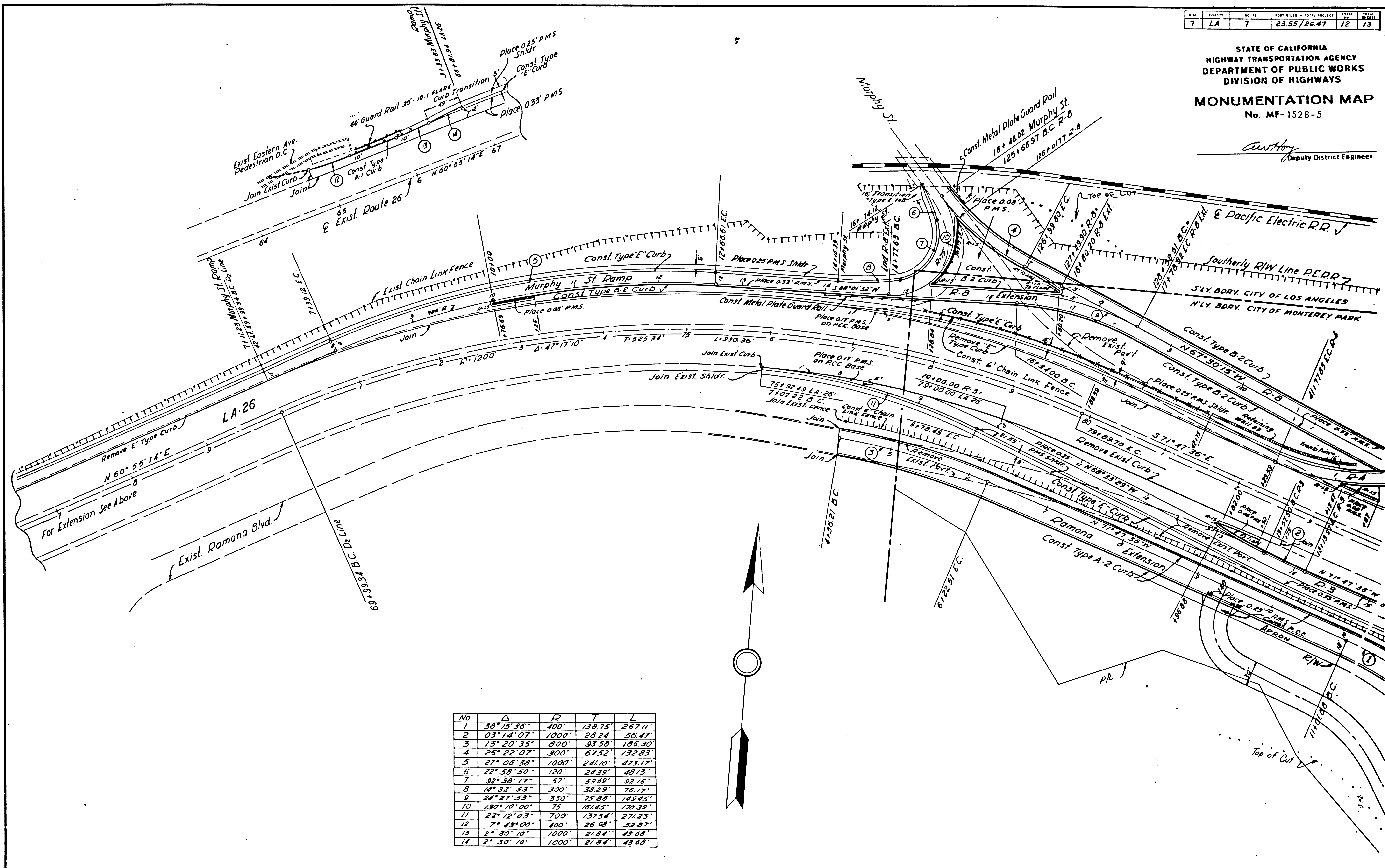
NO	Δ	R	T	L	NO	Δ	R	T	L
1	03°14'07"	1000	28.24	56.47	21	08°57'19"	700	54.82	109.41
2	72°31'20"	312	224.70	394.91	22	27°30'05"	800	195.77	393.99
3	38°15'36"	400	134.75	267.11	23	27°30'05"	800	195.77	393.99
4	105°43'00"	500	660.12	822.53	24	56°15'11"	120	64.15	117.82
5	21°18'47"	650	122.11	241.41	25	05°45'07"	1130	50.77	113.44
6	11°13'26"	1500	147.39	293.84	26	23°03'39"	100	20.40	40.25
7	11°13'26"	500	49.13	97.95	27	15°44'03"	100	13.82	27.66
8	15°56'50"	1000	140.70	278.33	28	26°25'32"	120	28.17	55.35
9	31°40'32"	400	113.47	221.14	29	70°50'10"	40	28.44	49.45
10	08°28'00"	1500	111.03	221.66	30	17°28'00"	300	45.91	91.82
11	51°32'35"	32	156.43	291.47	31	78°45'59"	25	20.52	34.37
12	33°11'56"	1000	298.10	579.43	32	11°32'10"	500	50.51	100.67
13	156°59'06"	160	785.90	438.39	33	108°25'33"	60	83.23	113.54
14	98°08'50"	180	207.00	308.34	34	18°28'30"	300	146.37	290.20
15	18°40'01"	300	52.00	102.98	35	13°29'53"	1212	143.43	285.53
16	53°15'00"	300	150.39	278.81	36	07°19'25"	1200	78.80	153.30
17	37°01'30"	350	117.10	235.17	37	16°51'43"	8125	121.17	240.55
18	137°30'00"	350	900.02	839.94					
19	12°57'51"	1132	129.76	258.40					
20	10°54'55"	900	76.43	152.41					

FOR R/W INFORMATION
 NOT SHOWN SEE R/W MAPS
 ON FILE IN DISTRICT OFFICE

NO.	COUNTY	NO. IN	POST M. L.S. - TOTAL PROJECT	SHEET NO.	TOTAL SHEETS
7	LA	7	23.55/26.47	12	19

STATE OF CALIFORNIA
HIGHWAY TRANSPORTATION AGENCY
DEPARTMENT OF PUBLIC WORKS
DIVISION OF HIGHWAYS
MONUMENTATION MAP
No. MF-1528-5

C. W. H. H.
Deputy District Engineer

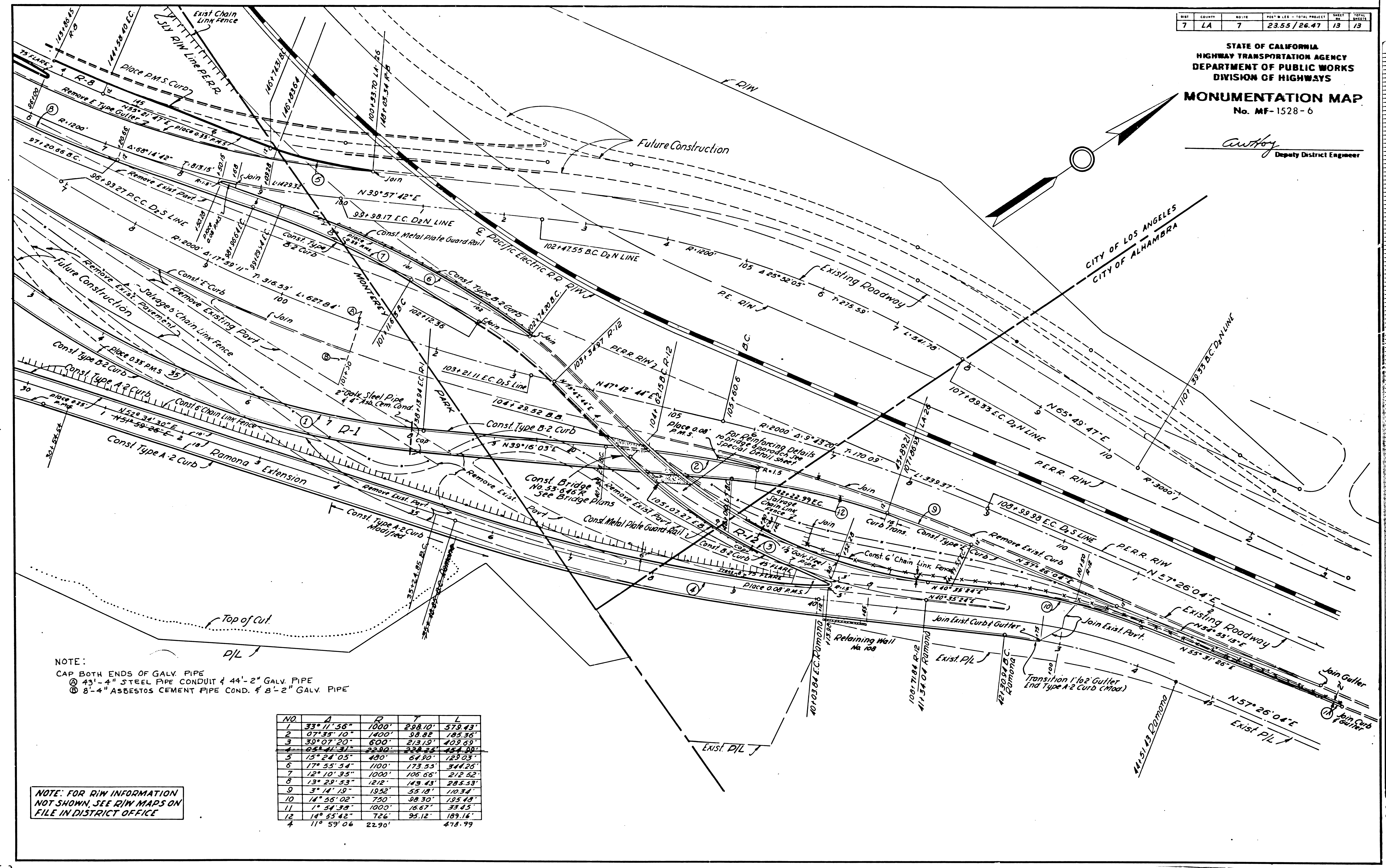


No.	Δ	R	T	L
1	38° 15' 35"	400'	138.75'	267.11'
2	03° 14' 07"	1000'	28.24'	56.47'
3	13° 20' 35"	800'	93.58'	186.30'
4	25° 22' 07"	300'	67.52'	132.83'
5	27° 05' 38"	1000'	241.10'	473.17'
6	22° 58' 50"	120'	24.60'	48.15'
7	32° 38' 17"	57'	53.60'	32.16'
8	14° 32' 53"	300'	38.29'	76.77'
9	24° 27' 53"	350'	75.88'	149.45'
10	130° 10' 00"	75'	167.65'	170.39'
11	23° 12' 03"	700'	137.54'	274.23'
12	7° 43' 00"	400'	26.48'	52.87'
13	2° 30' 10"	1000'	21.84'	43.68'
14	2° 30' 10"	1000'	21.84'	43.68'

DIST.	COUNTY	NO. 111	POST MILES - TOTAL PROJECT	SHEET NO.	TOTAL SHEETS
7	LA	7	23.55 / 26.47	13	13

STATE OF CALIFORNIA
HIGHWAY TRANSPORTATION AGENCY
DEPARTMENT OF PUBLIC WORKS
DIVISION OF HIGHWAYS
MONUMENTATION MAP
No. MF-1528-6

Cawthoy
Deputy District Engineer



NOTE:
CAP BOTH ENDS OF GALV. PIPE
Ⓐ 4 1/2" - 4" STEEL PIPE CONDUIT & 4 1/2" - 2" GALV. PIPE
Ⓑ 8 1/2" - 4" ASBESTOS CEMENT PIPE COND. & 8 1/2" - 2" GALV. PIPE

NO.	A	R	T	L
1	33° 11' 58"	1000'	298.10'	579.43'
2	07° 35' 10"	1400'	38.88'	185.36'
3	30° 07' 20"	800'	213.13'	409.69'
4	04° 41' 31"	2200'	234.26'	484.94'
5	15° 24' 05"	480'	64.80'	129.03'
6	17° 55' 34"	1100'	173.53'	344.25'
7	12° 10' 35"	1000'	106.66'	212.62'
8	13° 29' 53"	1212'	143.43'	285.53'
9	3° 14' 19"	1952'	55.18'	110.34'
10	14° 56' 02"	750'	98.30'	195.48'
11	1° 54' 38"	1000'	16.67'	33.45'
12	14° 55' 42"	726'	95.12'	189.16'
4	11° 59' 06"	2290'		478.79'

NOTE: FOR R/W INFORMATION
NOT SHOWN, SEE R/W MAPS ON
FILE IN DISTRICT OFFICE