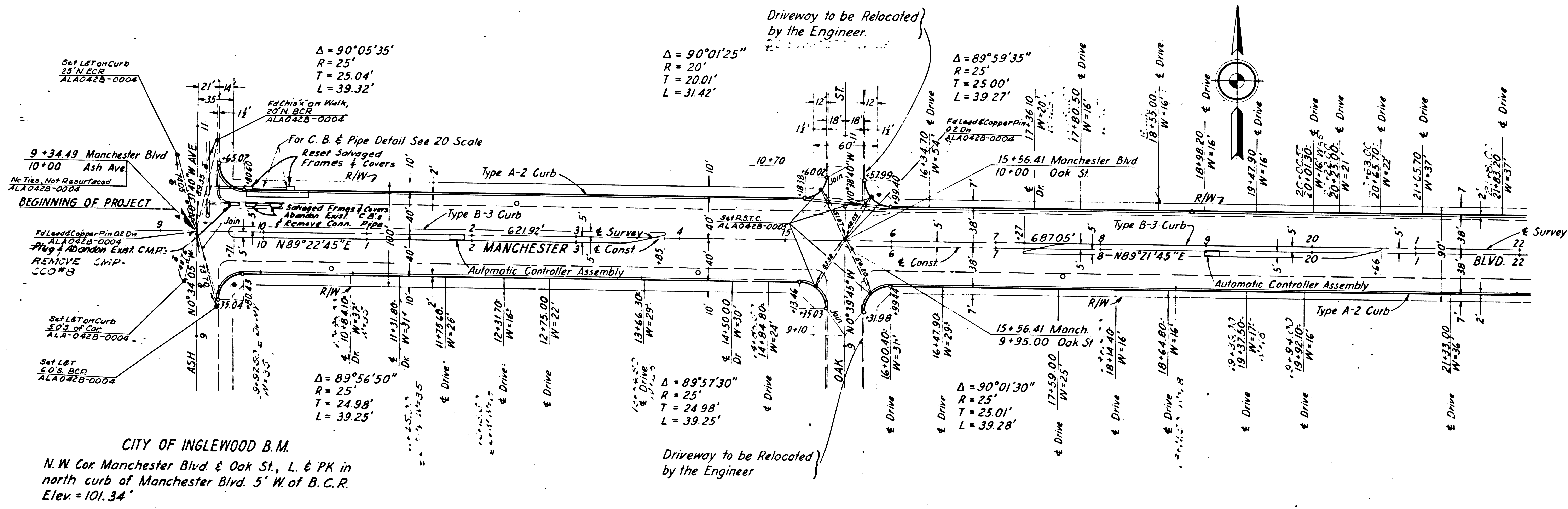


SHEET NO.	7	COUNTY	LA	ROUTE	42	POST MILES - TOTAL PROJECT	2.98-3.76	SHEET	1	TOTAL SHEETS	3
-----------	---	--------	----	-------	----	----------------------------	-----------	-------	---	--------------	---

STATE OF CALIFORNIA  
HIGHWAY TRANSPORTATION AGENCY  
DEPARTMENT OF PUBLIC WORKS  
DIVISION OF HIGHWAYS  
**MONUMENTATION MAP**

*aw Hoy*  
Deputy District Engineer



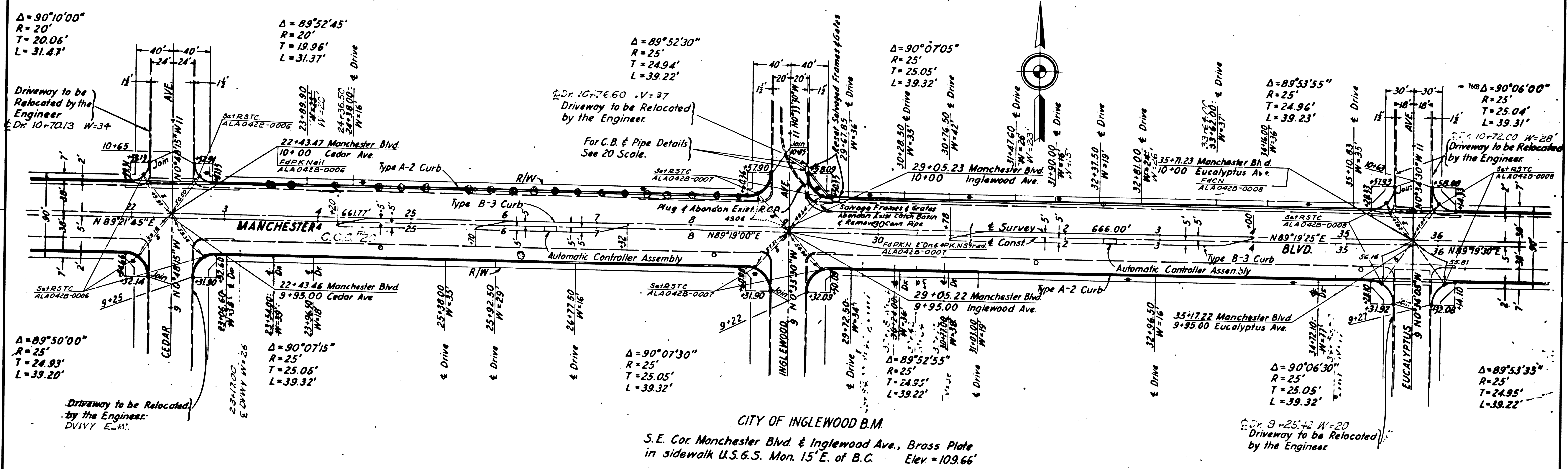
CITY OF INGLEWOOD B.M.  
N.W. Cor. Manchester Blvd. & Oak St., L. & PK in  
north curb of Manchester Blvd. 5' W of B.C.R.  
Elev. = 101.34'

154-9

POST MILES - TOTAL PROJECT	POST MILES	SHEET NO.	TOTAL SHEETS
2.98 - 3.76	2	3	

STATE OF CALIFORNIA  
HIGHWAY TRANSPORTATION AGENCY  
DEPARTMENT OF PUBLIC WORKS  
DIVISION OF HIGHWAYS  
**MONUMENTATION MAP**

*Anthony*  
Deputy District Engineer

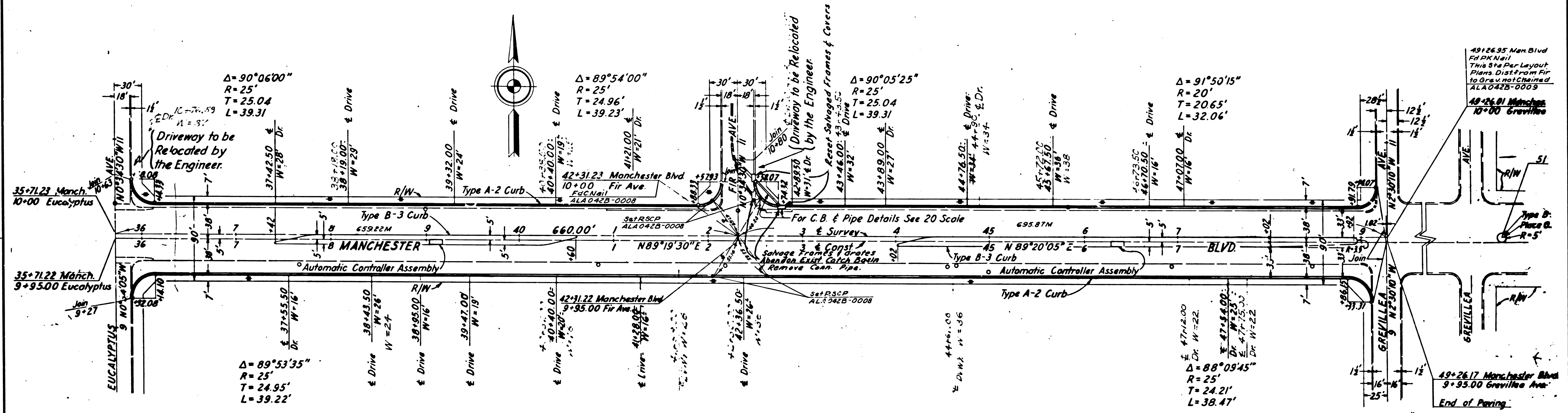


1549

POST MILES - TOTAL PROJECT	SHEET NO.	TOTAL SHEETS
7 LA 42 2.98 - 3.76	3	3

STATE OF CALIFORNIA  
HIGHWAY TRANSPORTATION AGENCY  
DEPARTMENT OF PUBLIC WORKS  
DIVISION OF HIGHWAYS  
**MONUMENTATION MAP**

*Anthony*  
Deputy District Engineer



CITY OF INGLEWOOD B.M.  
N.W. Cor. Manchester Blvd. & Fir Ave., L & PK in north  
curb of Manchester Blvd. 8' W. of B.C.R. Elev=112.29'