

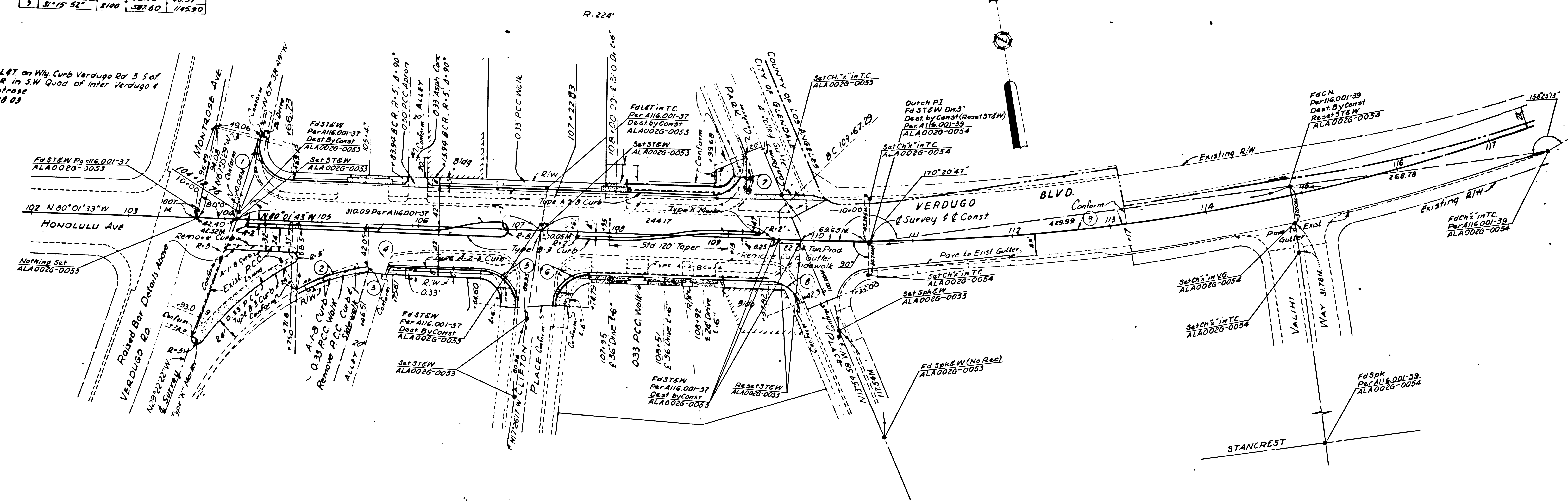
STATE OF CALIFORNIA  
 HIGHWAY TRANSPORTATION AGENCY  
 DEPARTMENT OF PUBLIC WORKS  
 DIVISION OF HIGHWAYS  
**MONUMENTATION MAP**

*Anthony*  
 Deputy District Engineer

No	Δ	Road	Tang	Length
1	102° 22' 54"	35	43.52	62.54
2	21° 58' 41"	200	38.04	76.72
3	115° 10' 11"	3	4.72	6.03
4	74° 08' 25"	5	3.78	6.27
5	93° 22' 37"	35	37.13	57.04
6	86° 46' 55"	35	33.09	53.01
7	113° 53' 75"	32	49.17	63.61
8	66° 06' 43"	35	22.78	40.39
9	81° 15' 52"	100	38.60	114.90

B.M. Fd L&T on Hwy Curb Verdugo Rd 5.5 of  
 B.C.R. in S.W. Quad of Inter Verdugo &  
 Montrose  
 Elev. 1218.03

B.M. #10 E-60 Set C.N.M. lead on S Curb Verdugo  
 Blvd 100' E of Entrance to Apt Bldg #200  
 3' West of end of curb  
 Elev. 1271.92



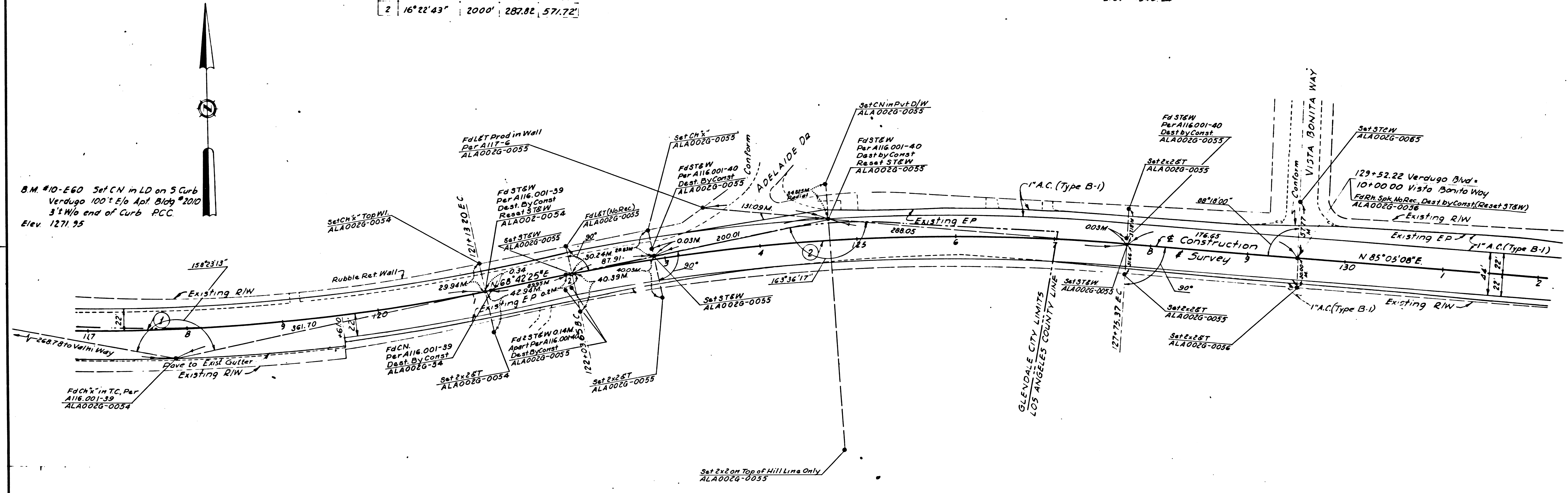
162-3

STATE OF CALIFORNIA  
 HIGHWAY TRANSPORTATION AGENCY  
 DEPARTMENT OF PUBLIC WORKS  
 DIVISION OF HIGHWAYS  
**MONUMENTATION MAP**

*Curby*  
 Deputy District Engineer

NO	Δ	RAD	TANG	LENGTH
1	31°15'52"	2100'	587.60'	1145.90'
2	16°22'43"	2000'	287.82'	571.72'

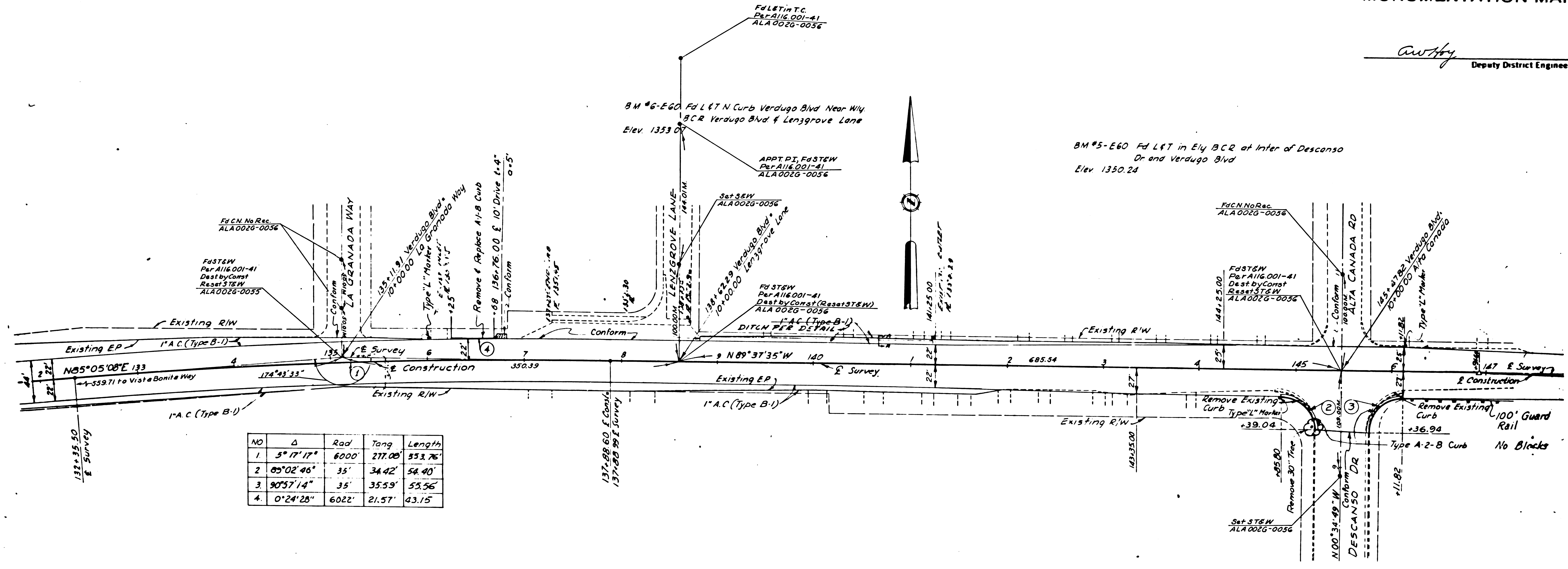
B.M. #8-E60 Fd L&T on Wly Curb Vista Bonita Way at  
 NW B.C. at Inter Vista Bonita & Verdugo  
 Elev. 1340.24



162-3

STATE OF CALIFORNIA  
 HIGHWAY TRANSPORTATION AGENCY  
 DEPARTMENT OF PUBLIC WORKS  
 DIVISION OF HIGHWAYS  
**MONUMENTATION MAP**

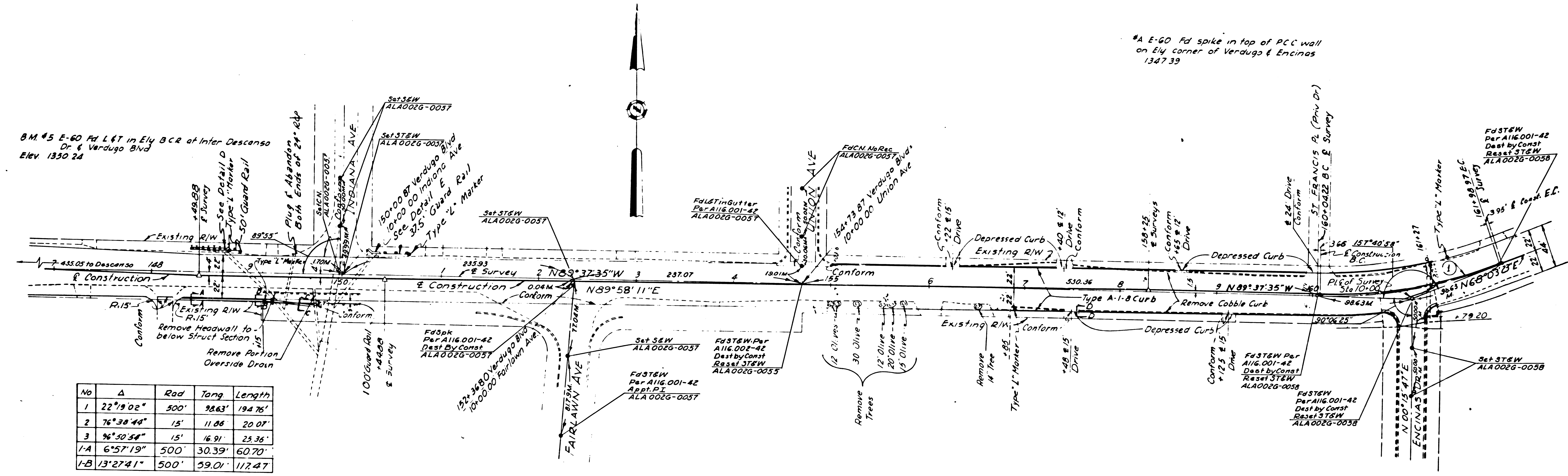
*AwHy*  
 Deputy District Engineer



NO	Δ	Rad	Tang	Length
1	5° 17' 17"	6000'	277.00'	533.76'
2	05° 02' 46"	35'	34.42'	54.40'
3	90° 37' 14"	35'	35.53'	53.56'
4	0° 24' 28"	6022'	21.57'	43.15'

STATE OF CALIFORNIA  
 HIGHWAY TRANSPORTATION AGENCY  
 DEPARTMENT OF PUBLIC WORKS  
 DIVISION OF HIGHWAYS  
**MONUMENTATION MAP**

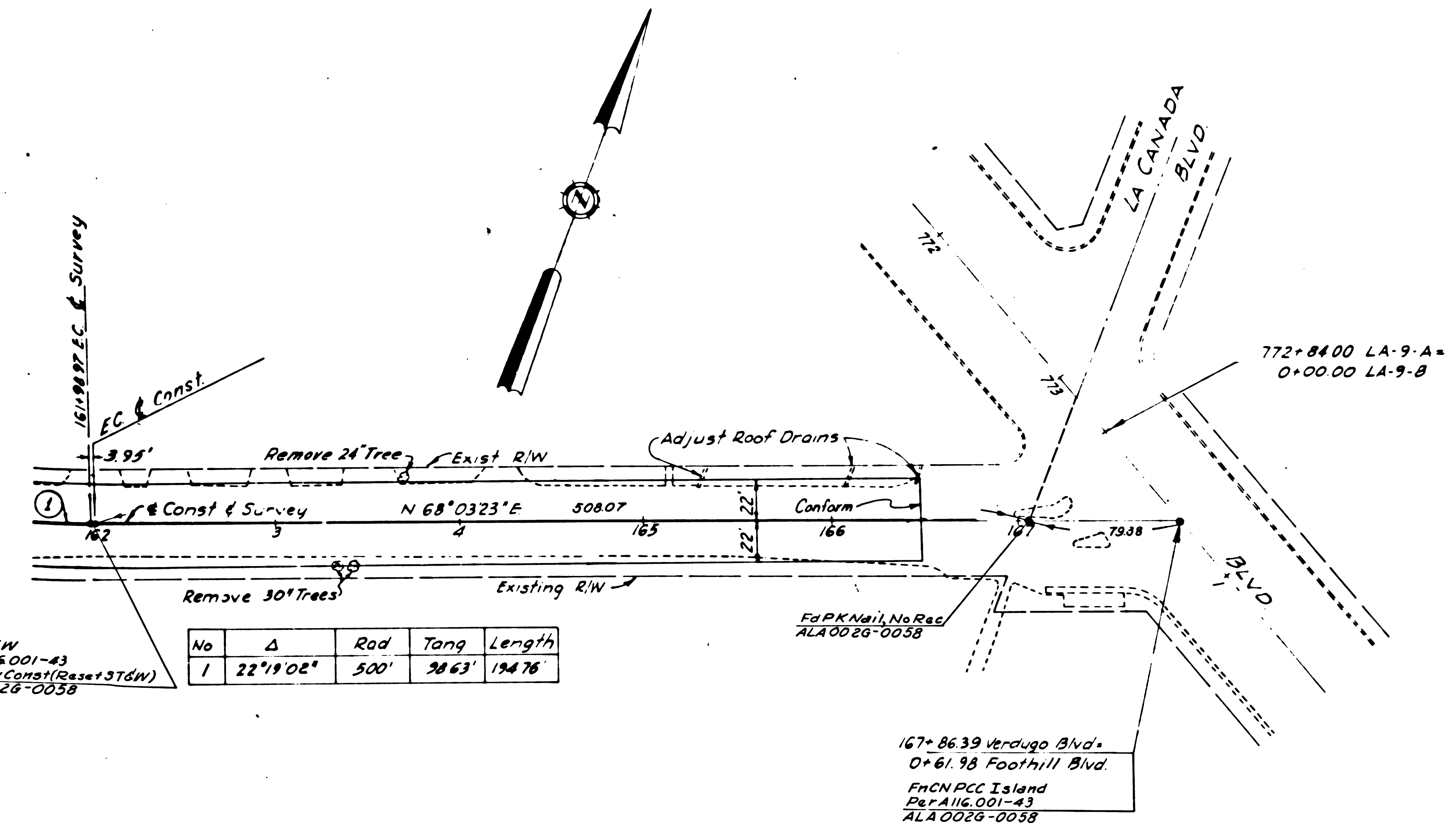
*C. Aubrey*  
 Deputy District Engineer



162-3

STATE OF CALIFORNIA  
 HIGHWAY TRANSPORTATION AGENCY  
 DEPARTMENT OF PUBLIC WORKS  
 DIVISION OF HIGHWAYS  
**MONUMENTATION MAP**

*C. W. Hoy*  
 Deputy District Engineer



BM "A" E-60 Fd spike in top of PCC Wall  
 on Ely corner of Verdugo & Encinas  
 Elev 1347.39

FASTSW  
 Plan 4116-001-83  
 Dist. by Const (Reset SW)  
 ALA 0026-0038

No	Δ	Rad	Tang	Length
1	22°19'02"	500'	38'63"	194'76"

Fd PK Nail, No Rec  
 ALA 0026-0038

167+86.39 Verdugo Blvd.  
 Or 61.98 Foothill Blvd.  
 FROM PCC Island  
 Plan 4116-001-83  
 ALA 0026-0038

BM 1-B-E-60 Fd ramset E end E Traffic Island  
 at Foothill and La Canada  
 Elev = 1358.84

162-3