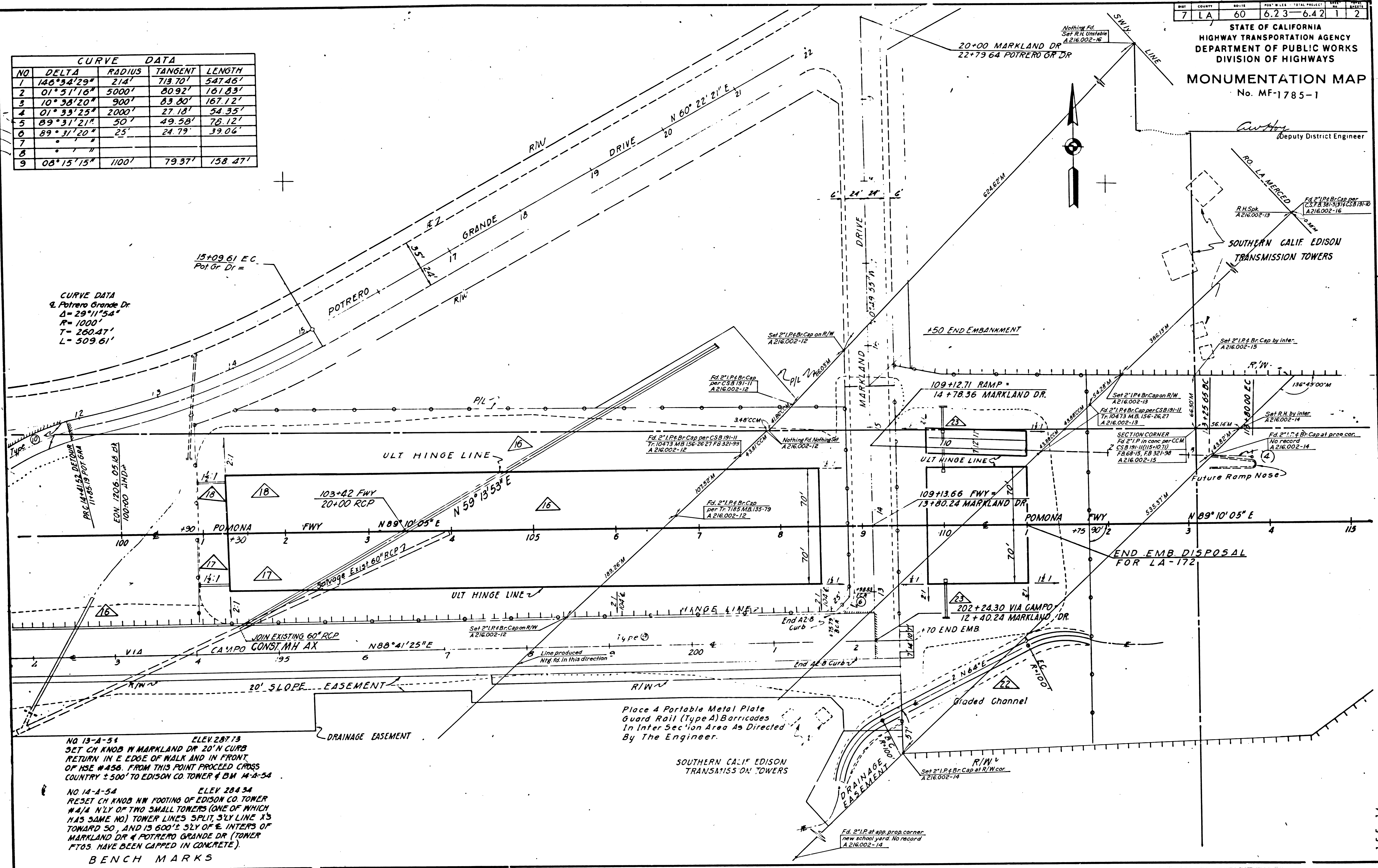


STATE OF CALIFORNIA
HIGHWAY TRANSPORTATION AGENCY
DEPARTMENT OF PUBLIC WORKS
DIVISION OF HIGHWAYS
MONUMENTATION MAP
No. MF-1785-1

CURVE DATA				
NO	DELTA	RADIUS	TANGENT	LENGTH
1	146°54'29"	214'	719.70'	547.46'
2	01°51'16"	5000'	80.92'	161.83'
3	10°38'20"	900'	83.80'	167.12'
4	01°33'25"	2000'	27.18'	54.35'
5	89°31'21"	50'	49.58'	78.12'
6	89°31'20"	25'	24.79'	39.06'
7	"	"	"	"
8	"	"	"	"
9	06°15'15"	1100'	79.37'	158.47'

CURVE DATA
2. Potrero Grande Dr.
Δ = 29°11'54"
R = 1000'
T = 260.47'
L = 509.61'



NO 13-A-54 ELEV 287.13
SET CH KNOB IN MARKLAND DR 20' N CURB
RETURN IN E EDGE OF WALK AND IN FRONT
OF HSE #456. FROM THIS POINT PROCEED CROSS
COUNTRY ± 500' TO EDISON CO. TOWER & BM 14-A-54

NO 14-A-54 ELEV 284.34
RESET CH KNOB NW FOOTING OF EDISON CO. TOWER
#4/4 N'LY OF TWO SMALL TOWERS (ONE OF WHICH
HAS SAME NO) TOWER LINES SPLIT 3/4" LINE X3
TOWARD SO, AND IS 600' ± S'LY OF E INTERS OF
MARKLAND DR & POTRERO GRANDE DR (TOWER
FTOS. HAVE BEEN CAPPED IN CONCRETE).

BENCH MARKS

Place 4 Portable Metal Plate
Guard Rail (Type A) Barricades
In Inter Section Area As Directed
By The Engineer.

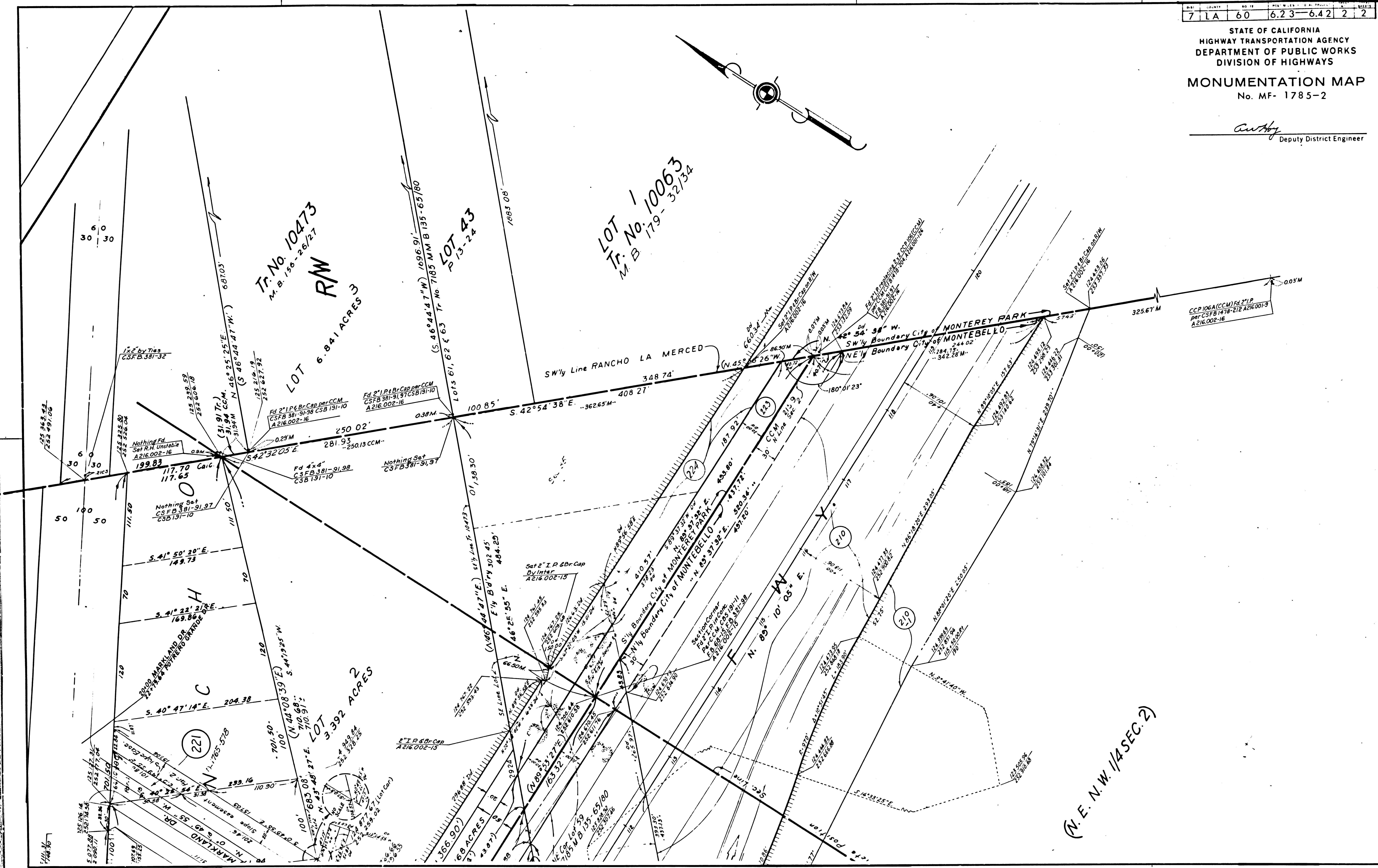
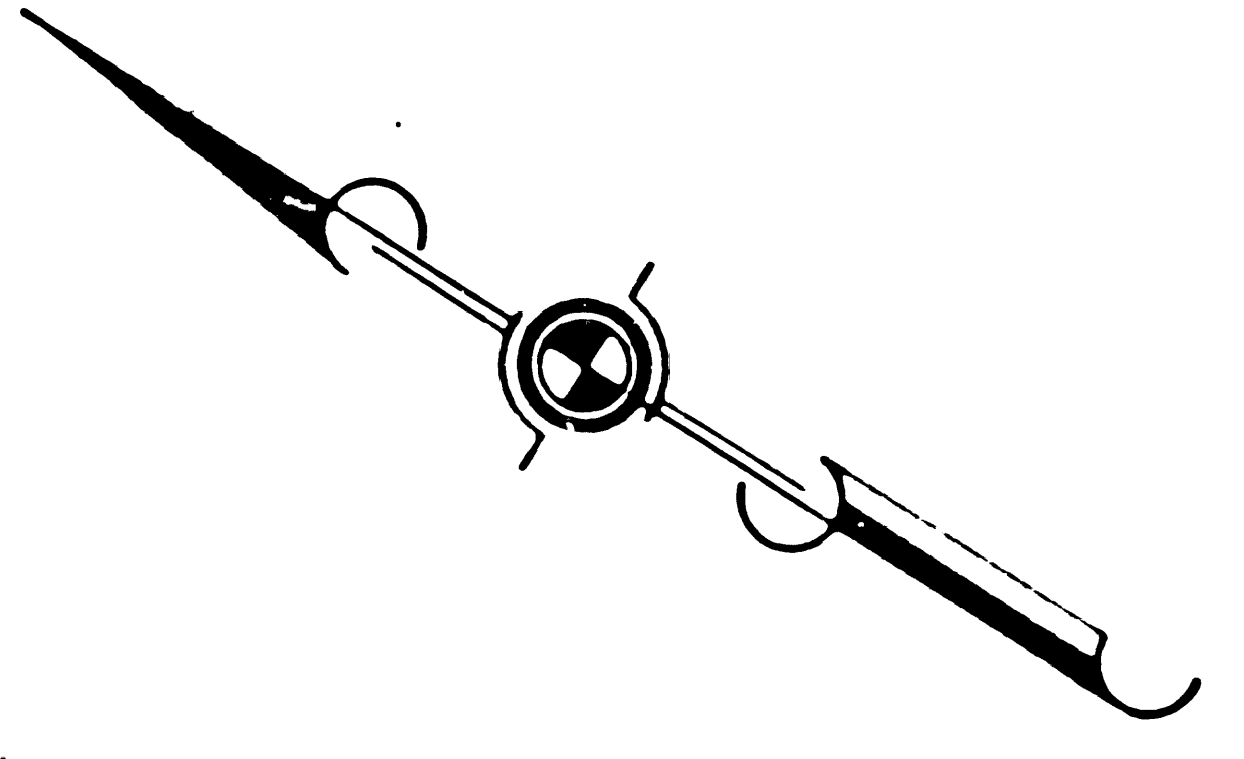
SOUTHERN CALIF EDISON
TRANSMISSION TOWERS

7 LA 60 6.23-6.42 2 2

STATE OF CALIFORNIA
HIGHWAY TRANSPORTATION AGENCY
DEPARTMENT OF PUBLIC WORKS
DIVISION OF HIGHWAYS

MONUMENTATION MAP
No. MF- 1785-2

Anthony
Deputy District Engineer



(N.E. N.W. 1/4 SEC. 2)

155-14