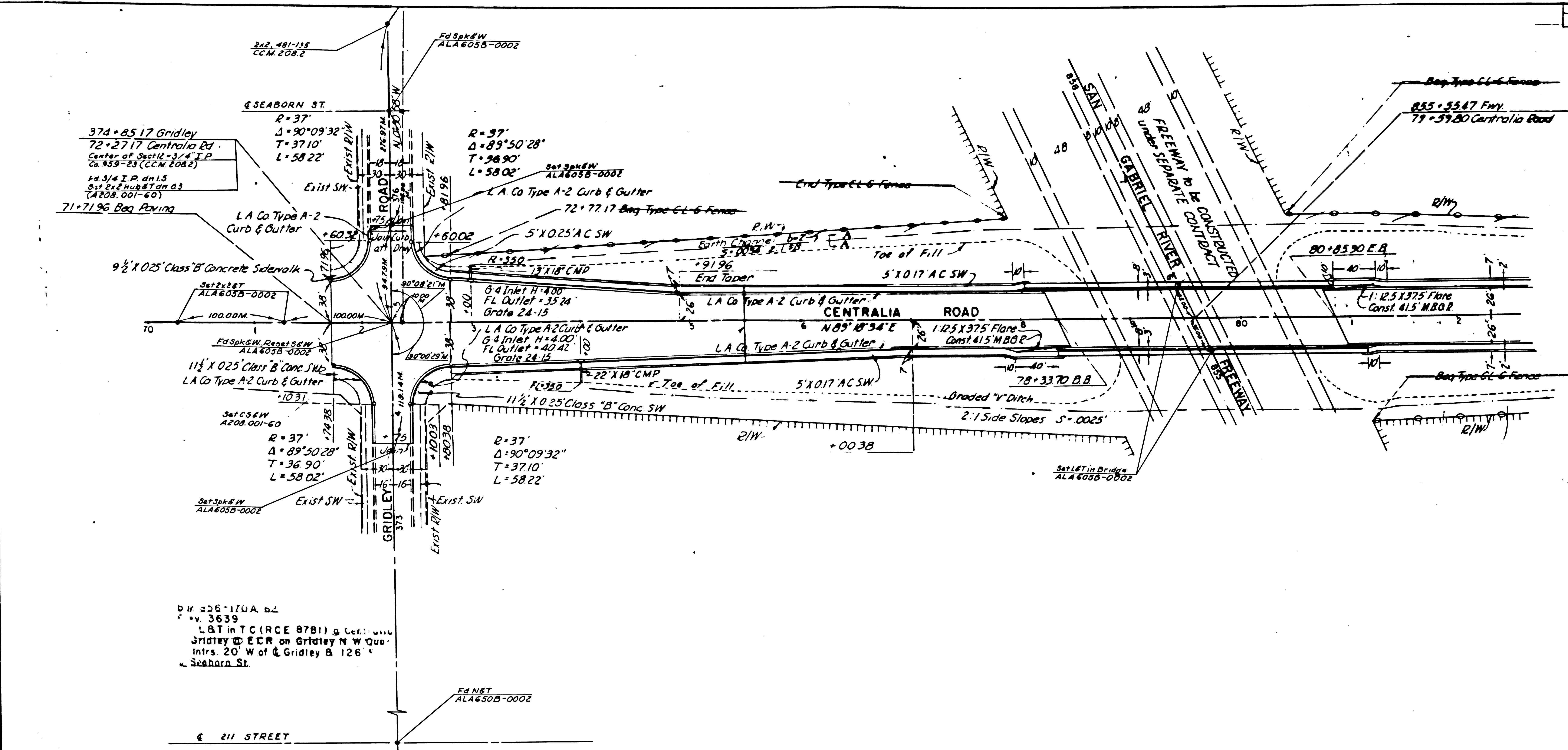


DATE	COUNTY	ROUTE	POST MILES	TOTAL PROJECT	SHEET	NO.
7	LA	605	31.7	3.35	1	4

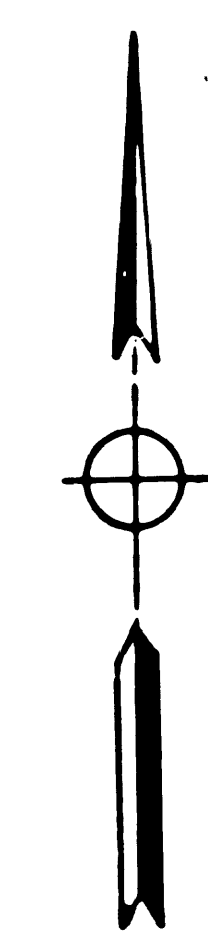
STATE OF CALIFORNIA
HIGHWAY TRANSPORTATION AGENCY
DEPARTMENT OF PUBLIC WORKS
DIVISION OF HIGHWAYS

MONUMENTATION MAP
No. MF-1957-1

Anthony
Deputy District Engineer



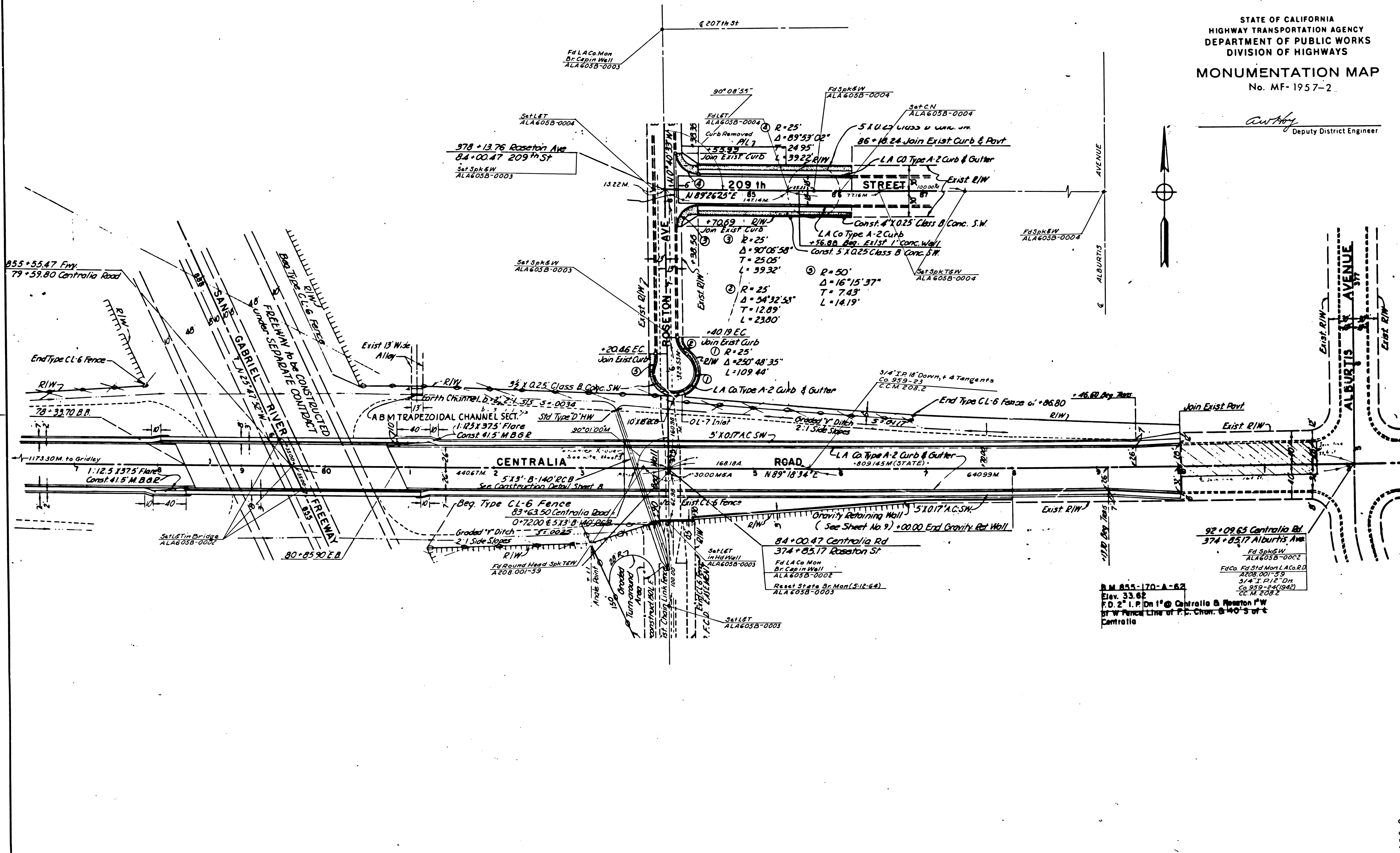
B.M. 356-170A 62
+ v. 3639
L&T in T.C. (RCE 8781) & Cont. 1111
Gridley @ E.C.R. on Gridley N.W. Quad
Intrs. 20' W of Gridley & 126'
Seaborn St.



DATE	COUNTY	ACRES	PLAN NO.	TOTAL PROJECT	SHEET	TOTAL SHEETS
7	LA	605	3.17	3.35	2	4

STATE OF CALIFORNIA
HIGHWAY TRANSPORTATION AGENCY
DEPARTMENT OF PUBLIC WORKS
DIVISION OF HIGHWAYS
MONUMENTATION MAP
No. MF-1957-2

C. W. H. H. H.
Deputy District Engineer

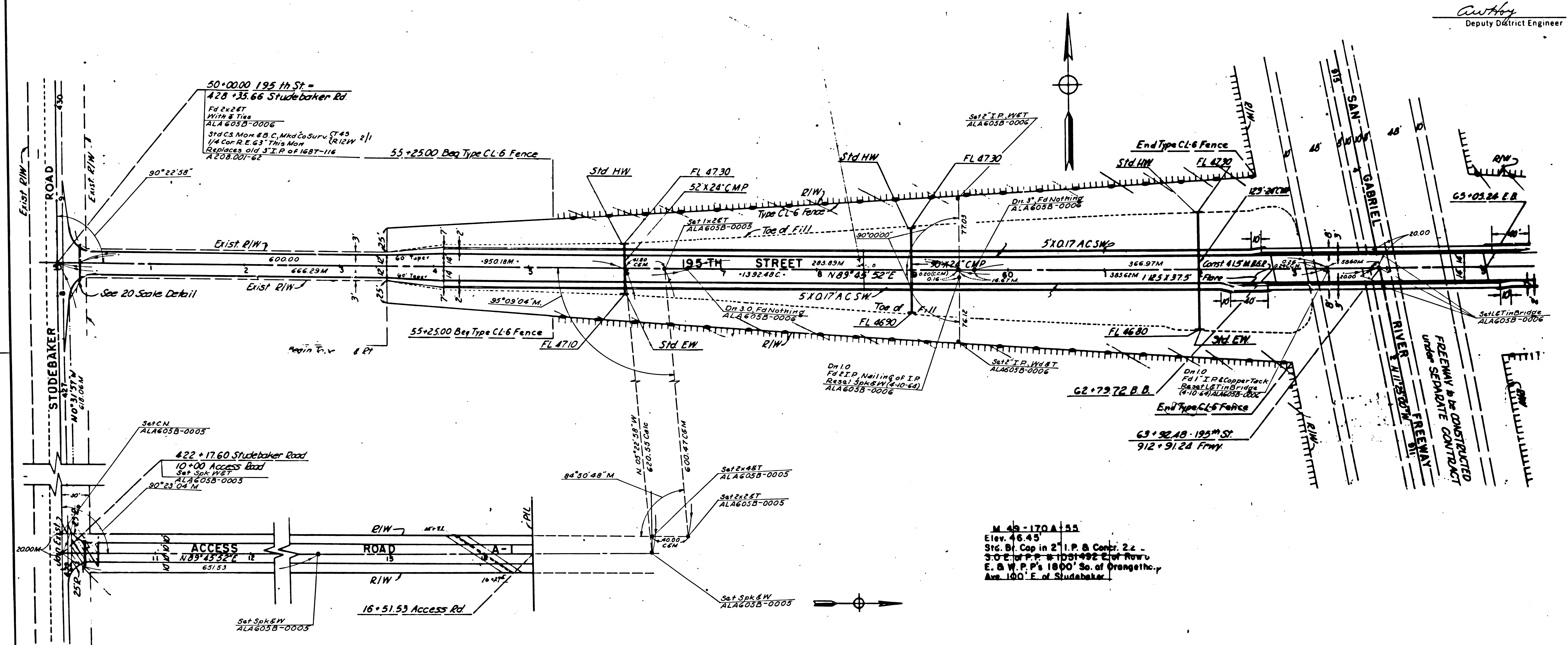


B.M. 55-170-A-82
Elev. 33.62
F.D. 2" I.P. On 1" @ Centralia & Roseaton P.W.
or W. Fence Line of P.C. Chan. 8'40" S of C
Centralia

SHEET	3	OF	4
POST MILES - TOTAL PROJECT	3.17	-	3.35
COUNTY	LA	ROUTE	605

STATE OF CALIFORNIA
HIGHWAY TRANSPORTATION AGENCY
DEPARTMENT OF PUBLIC WORKS
DIVISION OF HIGHWAYS
MONUMENTATION MAP
No. MF-1957-3

C. W. H. H.
Deputy District Engineer

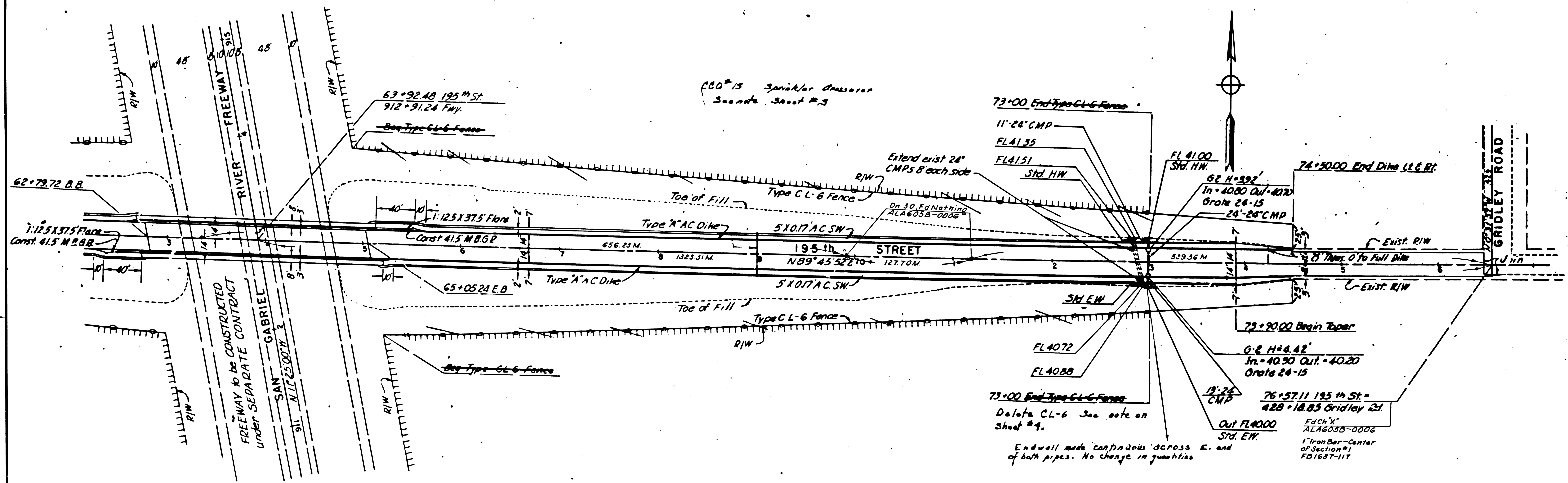


158-2

POST	CO. WY.	ROUTE	POST MILES - TOTAL PROJECT	DATE	TOTAL SHEETS
7	LA	605	3.17 - 3.35	4	4

STATE OF CALIFORNIA
HIGHWAY TRANSPORTATION AGENCY
DEPARTMENT OF PUBLIC WORKS
DIVISION OF HIGHWAYS
MONUMENTATION MAP
No. MF-1957-4

Anthony
Deputy District Engineer



158-2