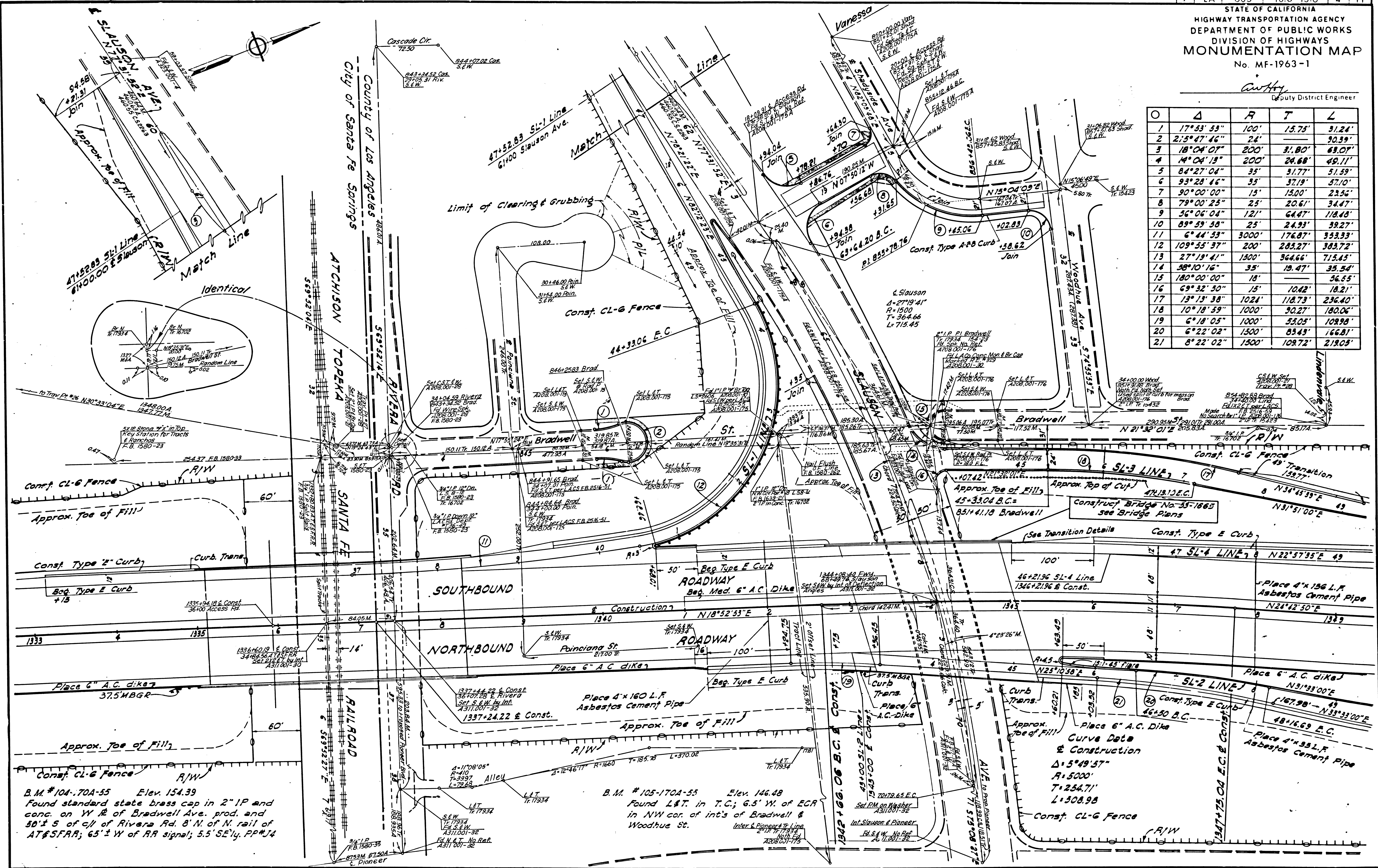


STATE OF CALIFORNIA
 HIGHWAY TRANSPORTATION AGENCY
 DEPARTMENT OF PUBLIC WORKS
 DIVISION OF HIGHWAYS
MONUMENTATION MAP
 No. MF-1963-1

Anthony
 Deputy District Engineer

Station	Δ	R	T	L
1	17°53'53"	100'	15.75'	31.24'
2	21°5'47'46"	200'	24'	30.59'
3	18°04'07"	200'	31.80'	63.07'
4	14°04'19"	200'	28.88'	49.11'
5	84°27'04"	35'	31.77'	51.59'
6	93°28'46"	35'	37.19'	57.10'
7	90°00'00"	15'	15.00'	23.55'
8	79°00'25"	25'	20.61'	34.47'
9	56°06'04"	121'	64.47'	118.48'
10	89°59'38"	25'	24.93'	39.27'
11	6°44'33"	3000'	176.87'	353.33'
12	109°55'37"	200'	285.27'	383.72'
13	27°19'41"	1500'	364.66'	715.45'
14	38°10'16"	35'	19.47'	35.54'
15	180°00'00"	18'		56.55'
16	69°32'50"	15'	10.42'	18.21'
17	13°13'38"	1024'	118.73'	236.40'
18	10°18'59"	1000'	90.27'	180.06'
19	6°18'05"	1000'	53.05'	108.98'
20	6°22'02"	1500'	83.43'	166.81'
21	8°22'02"	1500'	109.72'	219.05'



B.M. #104-70A-55 Elev. 154.39
 Found standard state brass cap in 2" IP and
 conc. on W.R. of Bradwell Ave. prod. and
 50'± S of c/l of Rivera Rd. 8' N. of N. rail of
 AT&SFRR; 65'± W of RR signal; 5.5' SEly. PP#J4

B.M. #105-170A-55 Elev. 146.48
 Found L&T. in T.C.; 6.5' W. of ECR
 in NW cor. of int's of Bradwell &
 Woodhugh St.
 Inter. & Pioneer Tr. Line
 with
 A. 1100-32

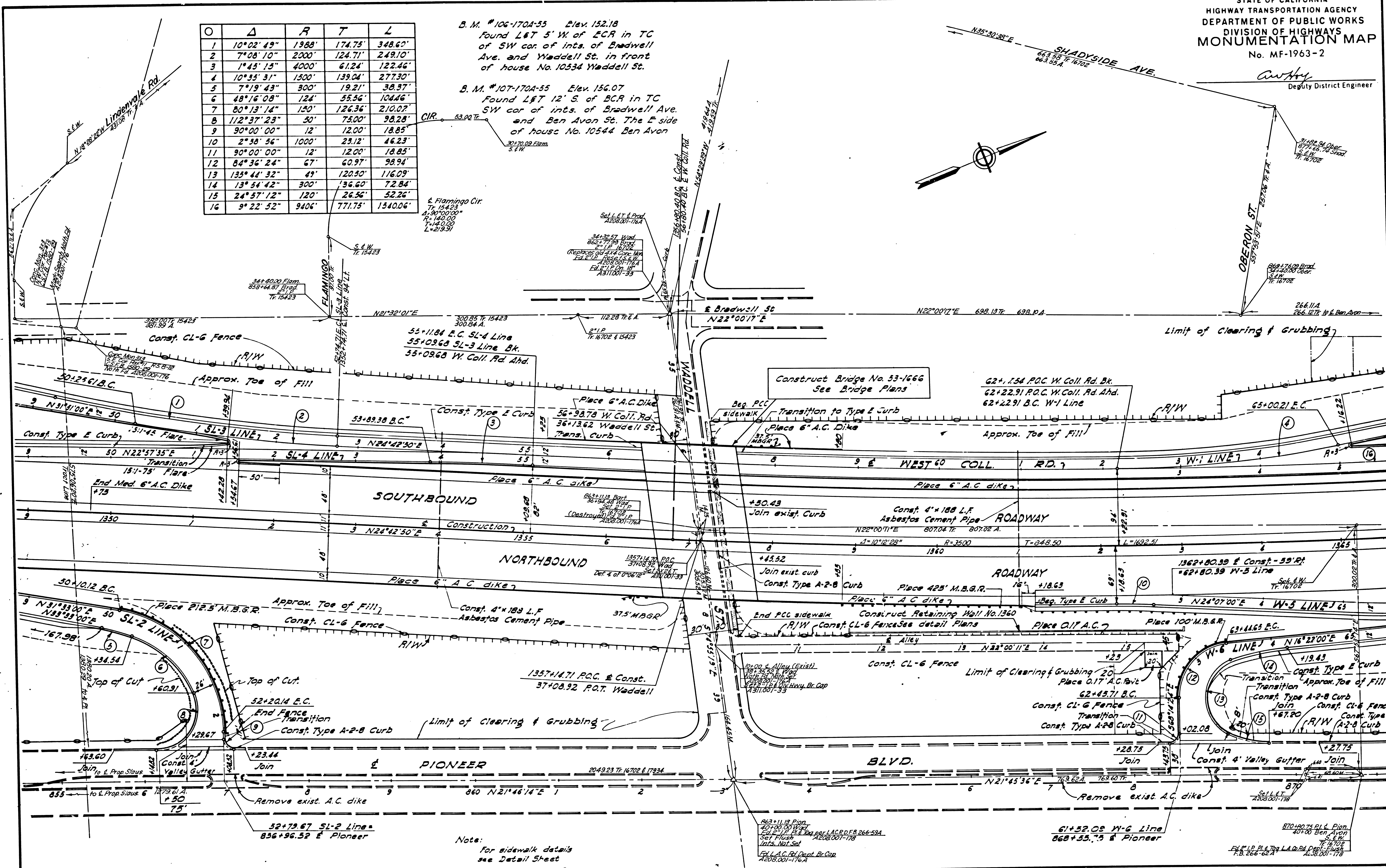
Arthur
Dputy District Engineer

O	Δ	R	T	L
1	10°02'49"	1988'	174.75'	348.60'
2	7°08'10"	2000'	124.71'	249.10'
3	1°45'15"	4000'	61.24'	122.46'
4	10°35'31"	1300'	139.04'	277.30'
5	7°19'43"	300'	19.21'	38.37'
6	48°16'08"	124'	55.56'	104.46'
7	80°13'14"	120'	126.36'	210.07'
8	112°37'23"	50'	75.00'	98.28'
9	90°00'00"	12'	12.00'	18.85'
10	2°38'56"	1000'	23.12'	46.23'
11	90°00'00"	12'	12.00'	18.85'
12	84°36'24"	67'	60.97'	98.94'
13	133°44'32"	49'	120.50'	116.09'
14	13°54'42"	300'	136.60'	72.84'
15	24°57'12"	120'	26.56'	52.26'
16	9°22'52"	9406'	771.75'	1540.06'

B. M. #106-1704-55 Elev. 152.18
Found L&T 5' W. of ECR in TC
of SW cor. of ints. of Bradwell
Ave. and Waddell St. in front
of house No. 10534 Waddell St.

B. M. #107-1704-55 Elev. 156.07
Found L&T 12' S. of BCR in TC
SW cor. of ints. of Bradwell Ave.
and Ben Avon St. The E side
of house No. 10544 Ben Avon

Flamingo Cir.
T₁ 15423
L₁ 90°00'00"
R₁ 140.00'
L₂ 140.00'
L₃ 140.00'



Note:
For sidewalk details
see Detail Sheet

863-1113 Plan
40'00'00' W
Set Floor
Ints. Not Set
F&L A.C. Rd. Dept. Br. Cap
A208.001-176A

61+52.09 W-6 Line
668+55.75 E Pioneer

870+80.75 P.L. Plan
40'00' Ben Avon
Set Floor
Ints. Not Set
F&L P.L. Dept. Br. Cap
A208.001-176

Layout Sheet 8 of 32 Sheets

156-16

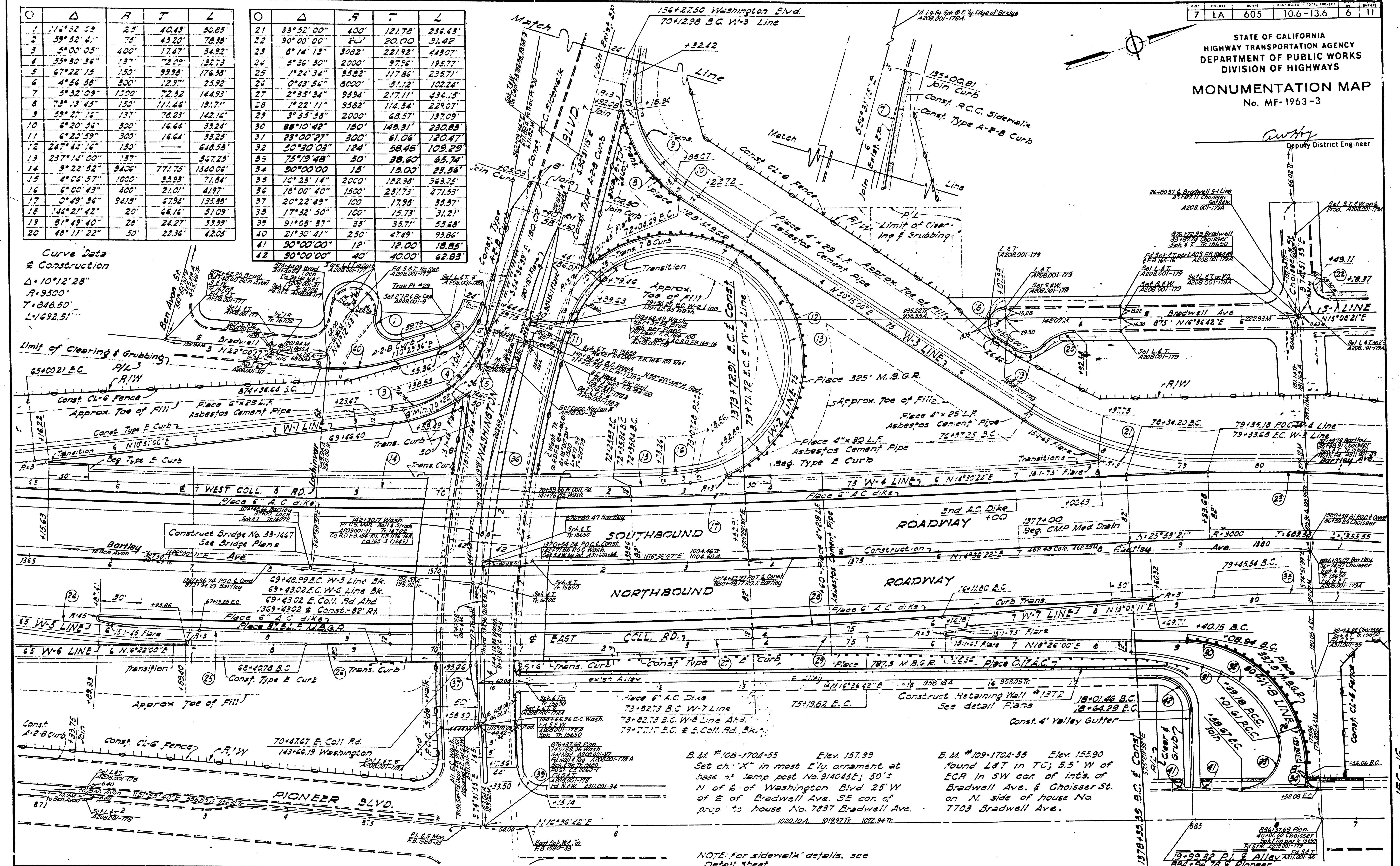
STATE OF CALIFORNIA
HIGHWAY TRANSPORTATION AGENCY
DEPARTMENT OF PUBLIC WORKS
DIVISION OF HIGHWAYS
MONUMENTATION MAP
No. MF-1963-3

Deputy District Engineer

Station	Δ	R	T	L
1	114°52'59"	25'	40.43'	50.85'
2	59°52'41"	75'	43.20'	78.38'
3	3°00'05"	400'	17.47'	34.92'
4	55°30'36"	137'	72.29'	132.73'
5	67°22'15"	150'	99.98'	176.38'
6	4°56'58"	300'	12.91'	25.92'
7	5°32'09"	1500'	72.52'	144.93'
8	73°13'45"	150'	111.46'	191.71'
9	59°27'12"	137'	78.23'	142.16'
10	6°20'56"	300'	16.64'	33.28'
11	6°20'59"	300'	16.64'	33.25'
12	247°44'16"	150'	648.58'	648.58'
13	237°14'00"	137'	567.25'	567.25'
14	9°22'52"	9406'	771.75'	1540.06'
15	4°05'57"	1000'	33.93'	71.84'
16	6°00'43"	400'	21.01'	41.97'
17	0°49'36"	9418'	67.94'	135.88'
18	146°21'42"	20'	66.16'	51.09'
19	81°49'40"	28'	24.27'	33.99'
20	48°11'22"	50'	22.36'	42.05'

Station	Δ	R	T	L
21	33°52'00"	400'	121.78'	236.43'
22	90°00'00"	2'	20.00'	31.42'
23	8°14'13"	3082'	221.92'	443.07'
24	5°36'30"	2000'	97.96'	195.77'
25	1°24'34"	9582'	117.86'	233.71'
26	0°43'56"	8000'	51.12'	102.24'
27	2°35'34"	9594'	217.11'	434.15'
28	1°22'11"	9582'	114.54'	229.07'
29	3°55'38"	2000'	68.57'	137.09'
30	88°10'42"	150'	145.31'	280.85'
31	23°00'27"	300'	61.06'	120.47'
32	50°30'03"	124'	58.48'	109.29'
33	75°19'48"	50'	38.60'	65.74'
34	50°00'00"	15'	13.00'	25.96'
35	10°25'14"	2000'	152.38'	363.75'
36	18°00'40"	1500'	231.73'	471.53'
37	20°22'49"	100'	17.98'	35.57'
38	17°52'50"	100'	15.73'	31.21'
39	91°08'37"	35'	35.71'	55.68'
40	21°30'41"	250'	47.49'	93.86'
41	90°00'00"	12'	12.00'	18.85'
42	90°00'00"	40'	40.00'	62.83'

Curve Data
& Construction
Δ = 10°12'28"
R = 9300'
T = 848.50'
L = 692.51'



B.M. #108-1701-55 Elev. 157.99
Set ch "X" in most Ely. ornament at
base of lamp post No. 914045E; 50'±
N of & of Washington Blvd. 25' W
of & of Bradwell Ave. SE cor. of
prop. to house No. 7897 Bradwell Ave.
1020.12A. 1019.97E. 1022.94E.

B.M. #109-1701-55 Elev. 155.90
found L&T in TC; 5.5' W of
E.C.R. in SW cor. of int's. of
Bradwell Ave. & Choisser St.
on N. side of house No.
7703 Bradwell Ave.

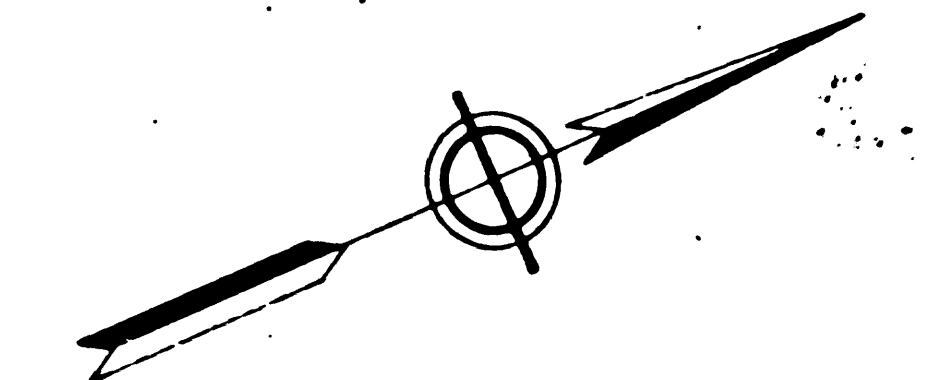
NOTE: For sidewalk details, see
Detail Sheet.

Revised Date: 1-15-63 Layout Sheet 9 of 38 Sheets

7	LA	605	10.6-13.6	7	11
---	----	-----	-----------	---	----

STATE OF CALIFORNIA
HIGHWAY TRANSPORTATION AGENCY
DEPARTMENT OF PUBLIC WORKS
DIVISION OF HIGHWAYS
MONUMENTATION MAP
No. MF-1963-4

C. W. Hoy
Deputy District Engineer



O	Δ	R	T	L
1	90°00'00"	20'	20.00'	31.42'
2	12°26'26"	750'	81.75'	162.85'
3	98°19'16"	100'	115.69'	171.60'
4	117°24'40"	85'	139.83'	174.18'
5	15°05'15"	200'	26.49'	52.67'
6	62°49'24"	50'	30.53'	34.82'
7	125°58'55"	150'	294.28'	329.82'
8	22°37'17"	150'	30.00'	59.22'

O	Δ	R	T	L
9	27°05'26"	600'	144.55'	283.69'
10	12°20'25"	2000'	216.22'	430.76'

O	Δ	R	T	L
11	10°25'14"	2000'	182.38'	363.75'
12	0°43'30"	5000'	31.64'	63.27'
13	4°13'36"	3000'	112.89'	225.67'
14	50°30'03"	124'	58.48'	109.29'
15	75°19'48"	50'	98.60'	65.74'
16	88°10'42"	150'	145.31'	230.85'
17	90°00'00"	30'	30.00'	47.12'
18	70°42'39"	35'	24.83'	43.09'
19	107°40'33"	25'	34.21'	46.98'
20	71°19'11"	35'	21.53'	37.34'
21	13°55'37"	726'	88.67'	176.47'
22	17°33'18"	750'	115.81'	229.79'
23	6°34'31"	2988'	171.64'	342.90'
24	3°33'22"	3000'	93.13'	186.20'
25	19°05'24"	200'	39.63'	66.64'
26	90°00'00"	15'	15.00'	23.56'

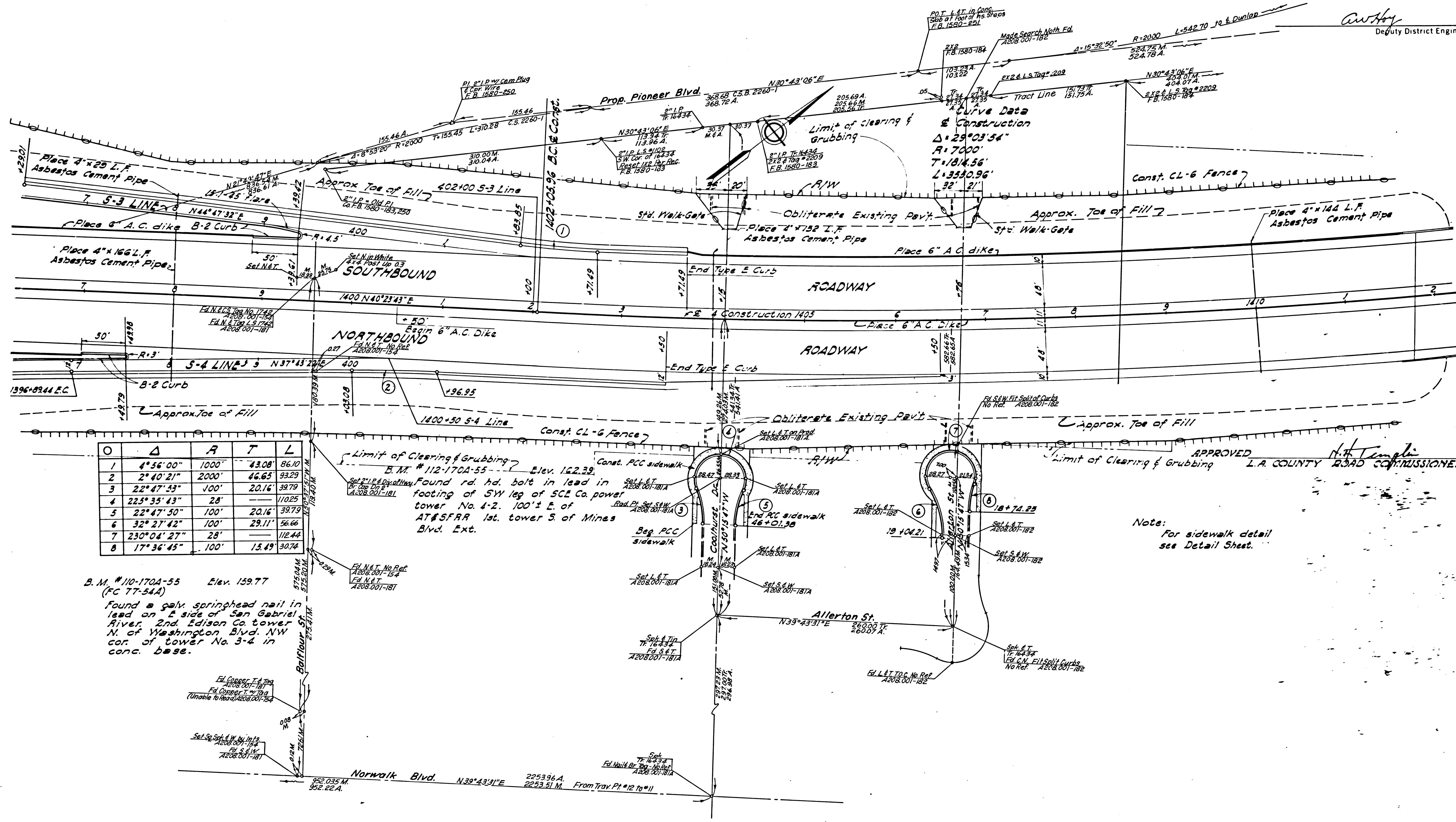
Curve Data
& Construction
Δ: 25°53'21"
R: 3000'
T: 1689.55'
L: 1355.55'

B. M. #109-170A-55 Elev. 155.90
Found L&T in TC; 5.5' W of ECR
in SW cor. of ints. of Bradwell
Ave & Choisser St. on N. side
of house No. 7703 Bradwell Ave.

B. M. #110-170A-55 Elev. 159.77
(FC 77-54A)
Found a galv. springhead nail
in lead on E side of San
Gabriel River. 2nd Edison Co.
tower N. of Washington Blvd.
NW cor. of tower No. 3-4
in conc. base

156-16

Anthony
Deputy District Engineer



O	Δ	R	T	L
1	4°56'00"	1000'	43.08'	86.10'
2	2°40'21"	2000'	46.65'	93.29'
3	22°47'53"	100'	20.16'	39.79'
4	22°35'43"	28'	—	110.25'
5	22°47'50"	100'	20.16'	39.79'
6	32°27'42"	100'	29.11'	56.66'
7	230°04'27"	28'	—	112.44'
8	17°36'45"	100'	15.49'	30.74'

B.M. #110-170A-55 Elev. 159.77
(FC 77-54A)
Found a galv. springhead nail in lead on E side of San Gabriel River. 2nd. Edison Co. tower N. of Washington Blvd. NW cor. of tower No. 3-4 in conc. base.

Limit of Clearing & Grubbing
B.M. #112-170A-55 Elev. 162.32
Found rd. hd. bolt in lead in footing of SW leg of SCE Co. power tower No. 4-2. 100'± E. of AT&SFRR 1st. tower S. of Mines Blvd. Ext.

Note:
For sidewalk detail see Detail Sheet.