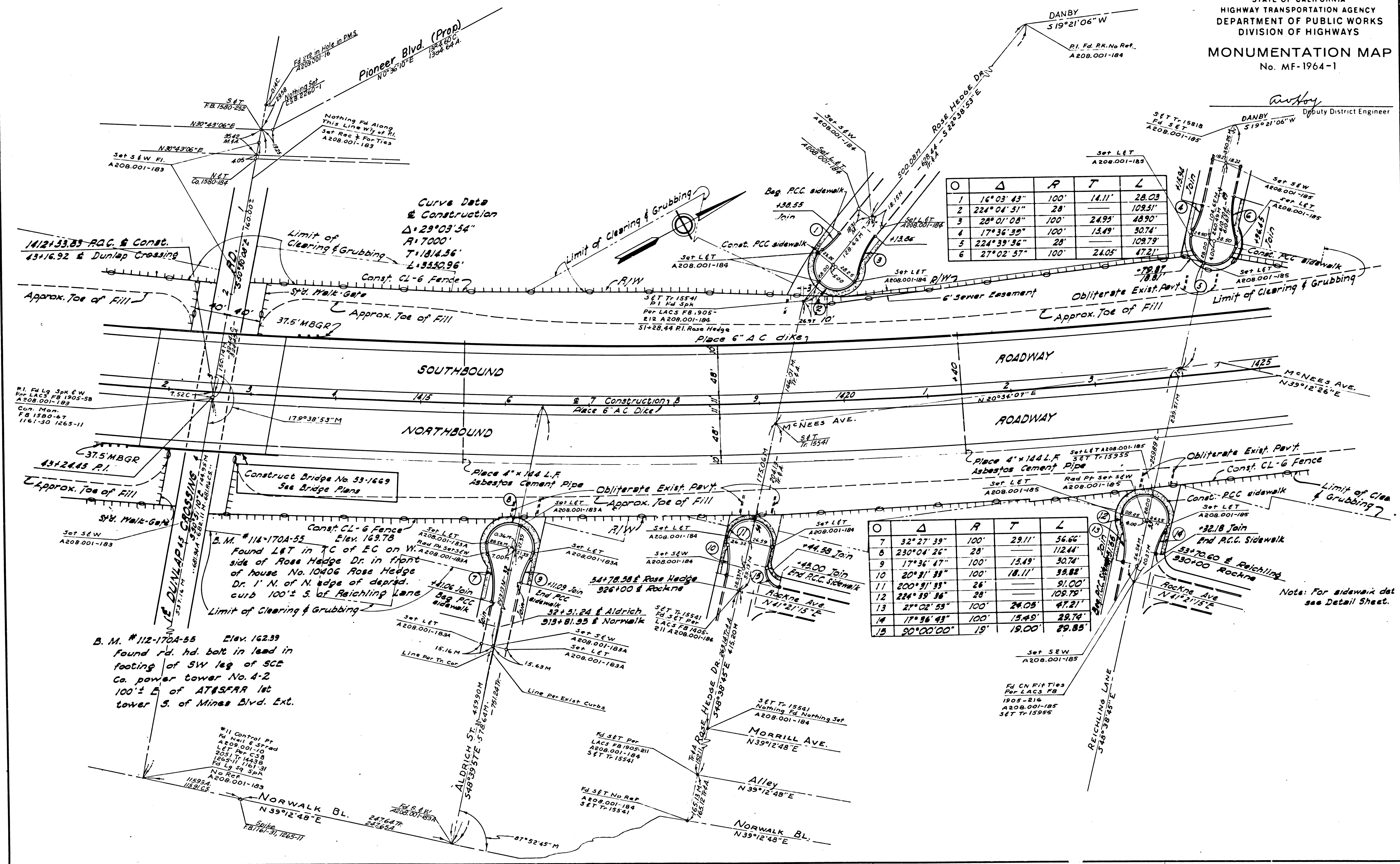


*awf*  
 Deputy District Engineer



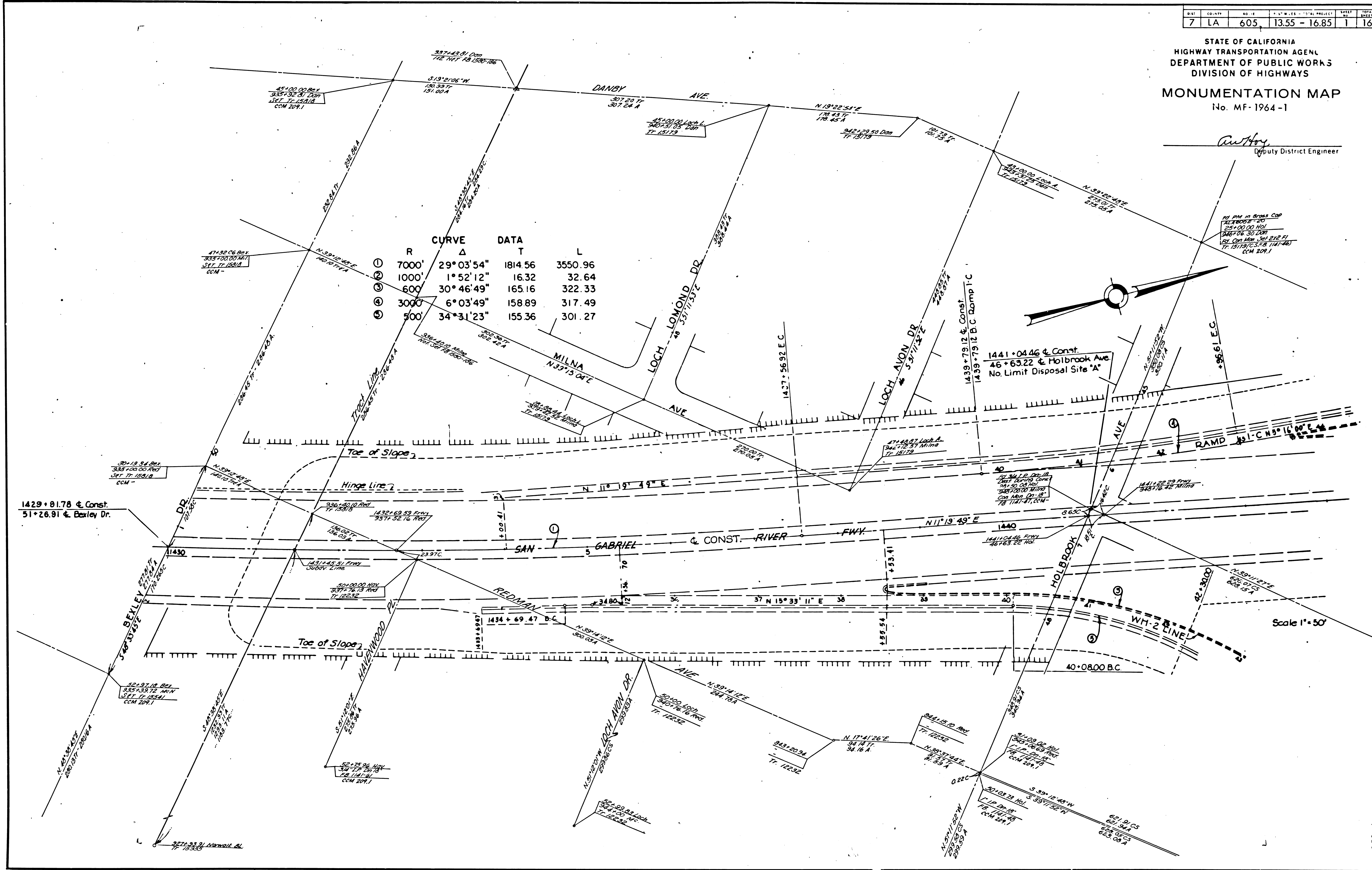
156-16

SHEET NO.	TOTAL SHEETS	DATE	BY
1	16	605	13.55 - 16.85

STATE OF CALIFORNIA  
HIGHWAY TRANSPORTATION AGENCY  
DEPARTMENT OF PUBLIC WORKS  
DIVISION OF HIGHWAYS  
**MONUMENTATION MAP**  
No. MF-1964-1

*Anthony*  
Deputy District Engineer

CURVE	R	Δ	T	L
①	7000'	29° 03' 54"	1814.56	3550.96
②	1000'	1° 52' 12"	16.32	32.64
③	600'	30° 46' 49"	165.16	322.33
④	3000'	6° 03' 49"	158.89	317.49
⑤	500'	34° 31' 23"	155.36	301.27



F.M. 20820 | SHT. 2

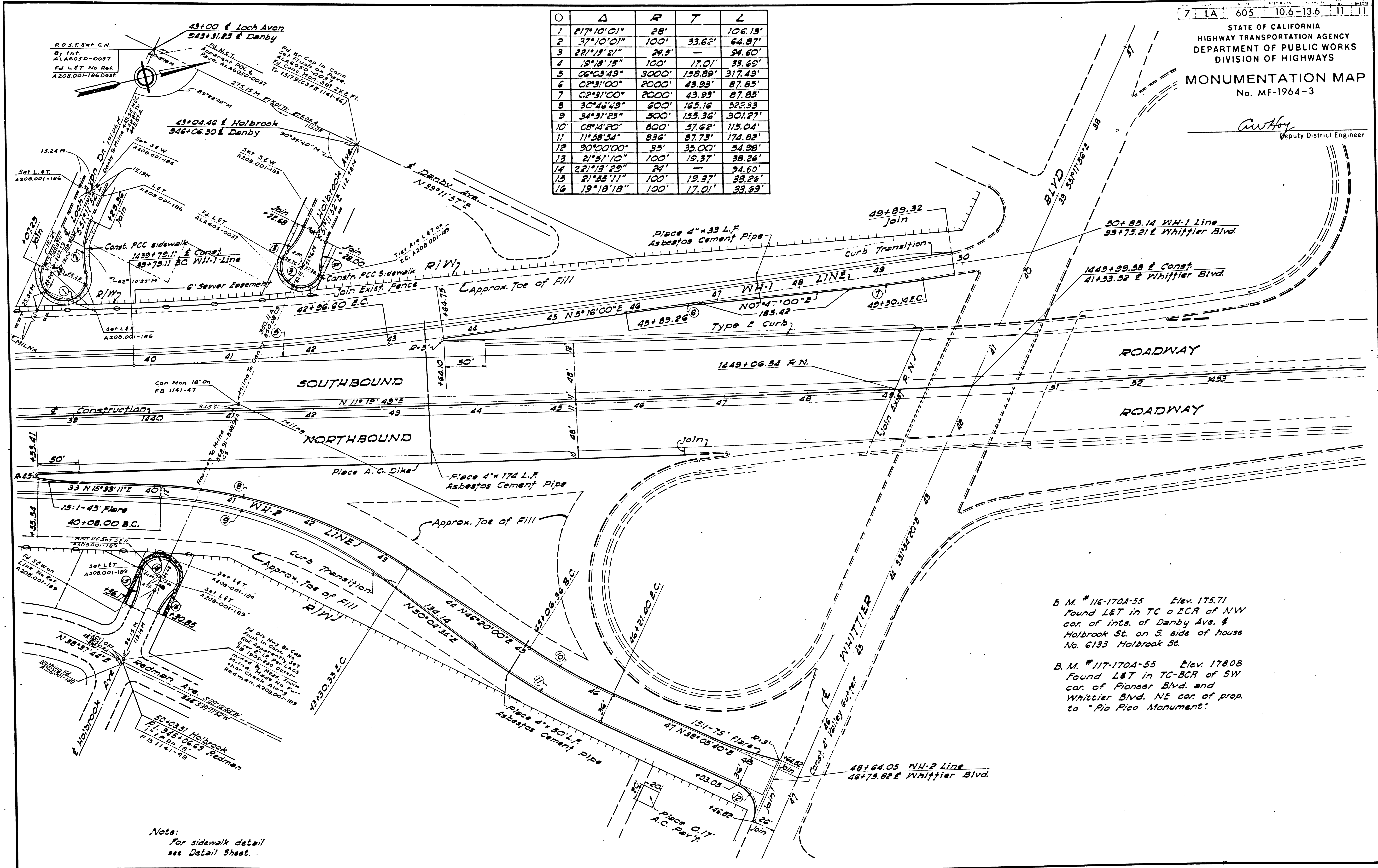
151-4

STATE OF CALIFORNIA  
HIGHWAY TRANSPORTATION AGENCY  
DEPARTMENT OF PUBLIC WORKS  
DIVISION OF HIGHWAYS

MONUMENTATION MAP  
No. MF-1964-3

*C. W. Hoy*  
Deputy District Engineer

O	Δ	R	T	L
1	217°10'01"	28'	106.13'	
2	37°10'01"	100'	33.62'	64.87'
3	221°18'21"	24.5'		34.60'
4	18°18'15"	100'	17.01'	33.69'
5	06°03'49"	3000'	158.89'	317.49'
6	02°31'00"	2000'	43.93'	87.85'
7	02°31'00"	2000'	43.93'	87.85'
8	30°46'49"	600'	165.16'	322.33'
9	34°31'23"	500'	155.36'	301.27'
10	08°14'20"	800'	57.62'	115.04'
11	11°58'54"	836'	87.73'	174.82'
12	90°00'00"	35'	35.00'	34.98'
13	21°51'10"	100'	19.37'	38.26'
14	22°13'29"	24'		34.60'
15	21°45'11"	100'	19.37'	38.26'
16	19°18'18"	100'	17.01'	33.69'



B. M. #116-170A-55 Elev. 175.71  
Found L&T in TC o ECR of NW  
cor. of ints. of Danby Ave. &  
Holbrook St. on S. side of house  
No. 6133 Holbrook St.

B. M. #117-170A-55 Elev. 178.08  
Found L&T in TC-BCR of SW  
cor. of Pioneer Blvd. and  
Whittier Blvd. NE cor. of prop.  
to "Pio Pico Monument"

Notes:  
For sidewalk detail  
see Detail Sheet.

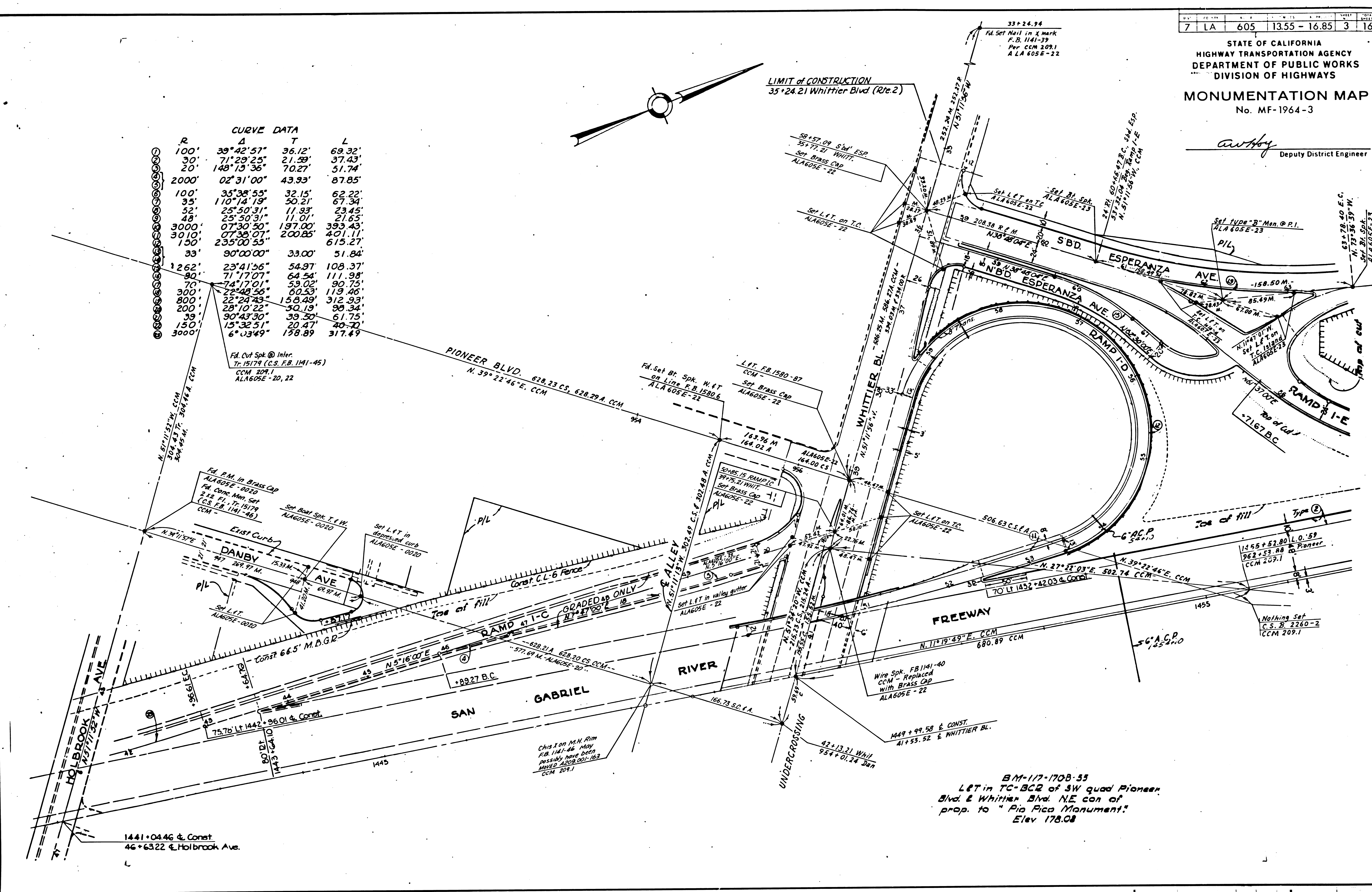
156-16

STATE OF CALIFORNIA  
HIGHWAY TRANSPORTATION AGENCY  
DEPARTMENT OF PUBLIC WORKS  
DIVISION OF HIGHWAYS  
**MONUMENTATION MAP**  
No. MF-1964-3

*awhoy*  
Deputy District Engineer

**CURVE DATA**

R	Δ	T	L
100'	39°42'57"	36.12'	69.32'
30'	71°29'25"	21.59'	37.43'
20'	148°13'36"	70.27'	51.74'
2000'	02°31'00"	43.93'	87.85'
100'	35°38'55"	32.15'	62.22'
35'	110°14'19"	50.21'	67.34'
52'	25°50'31"	11.33'	23.45'
48'	25°50'31"	11.01'	21.65'
3000'	07°30'50"	197.00'	393.43'
3010'	07°30'07"	200.85'	401.11'
150'	235°00'55"	615.27'	615.27'
33'	90°00'00"	33.00'	51.84'
1262'	23°41'56"	54.97'	108.37'
90'	71°17'07"	64.54'	111.98'
70'	74°17'01"	53.02'	90.75'
300'	22°42'56"	60.53'	119.46'
800'	22°24'43"	158.49'	312.93'
200'	28°10'22"	50.19'	98.34'
39'	90°43'30"	39.50'	61.75'
150'	15°32'51"	20.47'	40.70'
3000'	6°03'49"	198.89'	317.49'



BM-117-1708-55  
LET in TC-BCR of SW quad Pioneer  
Bvd. & Whittier Bvd. NE con of  
prop. to "Pio Pico Monument"  
Elev 178.08

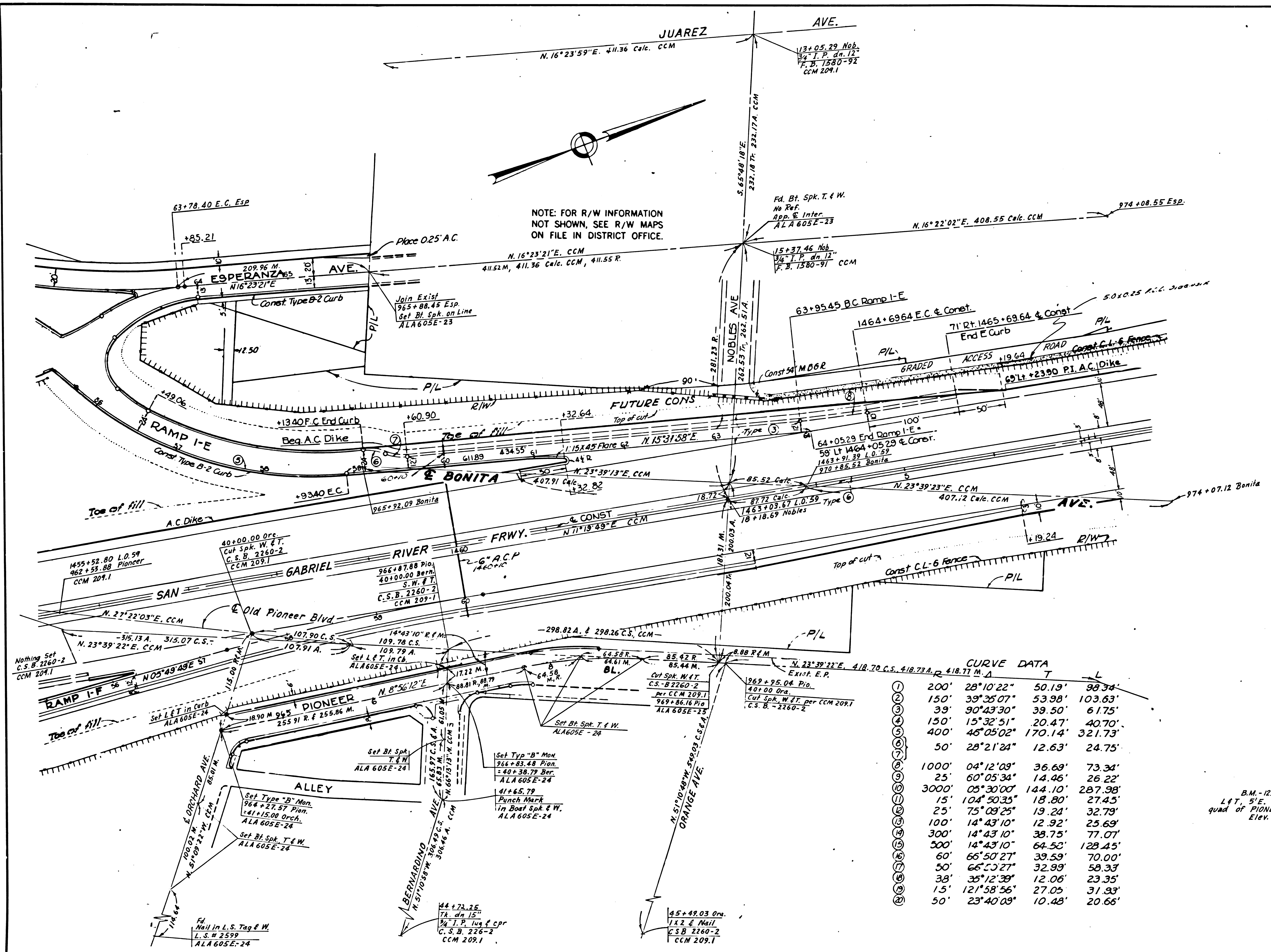
1441+04.46 & Const.  
46+63.22 & Holbrook Ave.

151-4

7	LA	605	13.55	- 16.85	4	16
---	----	-----	-------	---------	---	----

STATE OF CALIFORNIA  
 HIGHWAY TRANSPORTATION AGENCY  
 DEPARTMENT OF PUBLIC WORKS  
 DIVISION OF HIGHWAYS  
**MONUMENTATION MAP**  
 No. MF-1964-4

*C. W. Hoy*  
 Deputy District Engineer



**CURVE DATA**

Station	Angle	Chord	Offset	Length
1	28°10'22"	50.19'	98.34'	
2	39°35'07"	53.98'	103.63'	
3	90°43'30"	39.50'	61.75'	
4	15°32'51"	20.47'	40.70'	
5	46°05'02"	170.14'	321.73'	
6	28°21'24"	12.63'	24.75'	
7	04°12'09"	36.69'	73.34'	
8	60°05'34"	14.46'	26.22'	
9	05°30'00"	144.10'	287.98'	
10	104°50'35"	18.80'	27.45'	
11	75°09'25"	19.24'	32.79'	
12	14°43'10"	12.92'	25.69'	
13	14°43'10"	38.75'	77.07'	
14	14°43'10"	64.50'	128.45'	
15	66°50'27"	39.59'	70.00'	
16	66°50'27"	32.99'	58.33'	
17	35°12'39"	12.06'	23.35'	
18	121°58'56"	27.05'	31.33'	
19	23°40'09"	10.48'	20.66'	

B.M. - 123-170B-55  
 L&T, 5'E. of ECR, in TC of NE  
 Quad of PIONEER BL. and BERNARDINO AVE.  
 Elev. 186.89

151-4