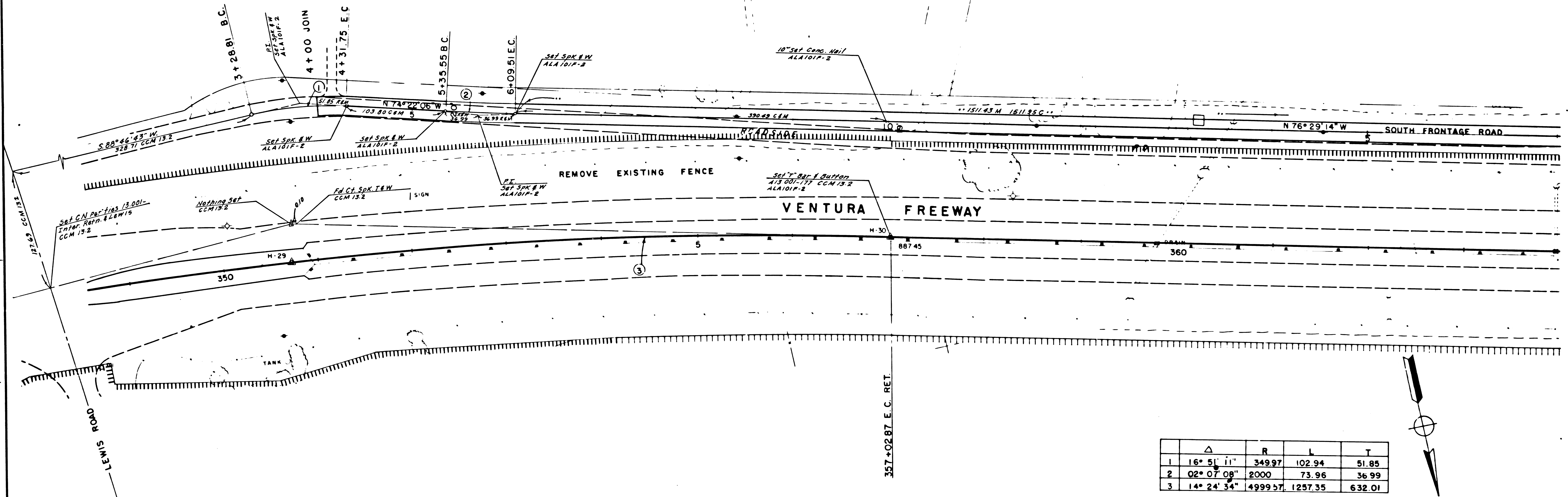


STATE OF CALIFORNIA
 HIGHWAY TRANSPORTATION AGENCY
 DEPARTMENT OF PUBLIC WORKS
 DIVISION OF HIGHWAYS
MONUMENTATION MAP
 No. MF-2217.2-1

Anthony
 Deputy District Engineer

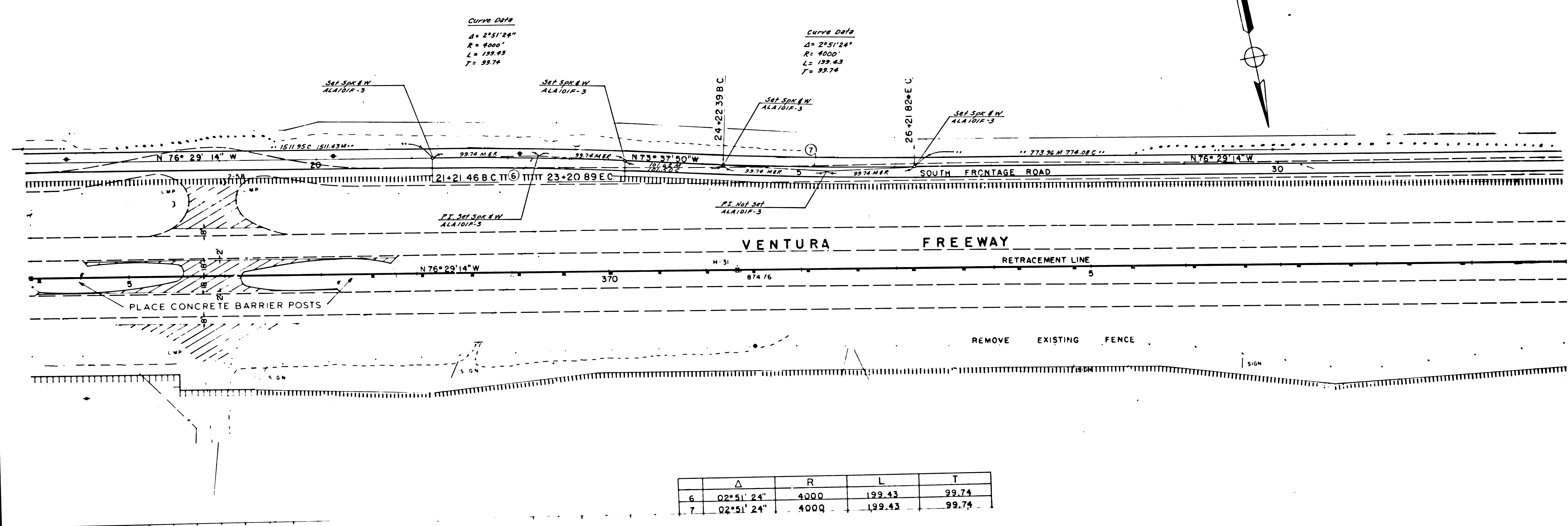
Curve Data
 Δ = 16° 51' 11"
 R = 349.97
 L = 102.94
 T = 51.85

Curve Data
 Δ = 2° 07' 08"
 R = 2000
 L = 73.96
 T = 36.99



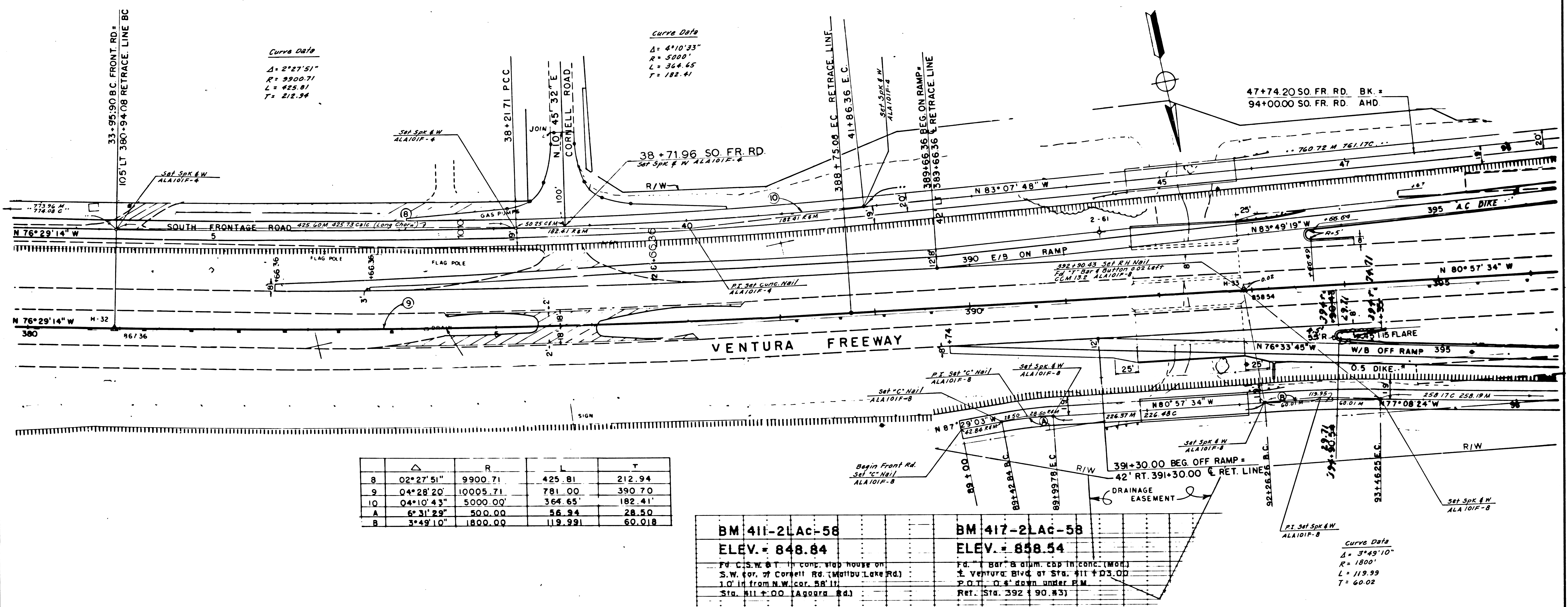
STATE OF CALIFORNIA
 HIGHWAY TRANSPORTATION AGENCY
 DEPARTMENT OF PUBLIC WORKS
 DIVISION OF HIGHWAYS
MONUMENTATION MAP
 No. MF-2217.2-2

Anthony
 Deputy District Engineer



STATE OF CALIFORNIA
 HIGHWAY TRANSPORTATION AGENCY
 DEPARTMENT OF PUBLIC WORKS
 DIVISION OF HIGHWAYS
MONUMENTATION MAP
 No. MF-2217.2-3

C. W. H. J.
 Deputy District Engineer



Curve Data
 $\Delta = 2^{\circ}27'51''$
 $R = 9900.71$
 $L = 425.81$
 $T = 212.94$

Curve Data
 $\Delta = 4^{\circ}10'33''$
 $R = 5000'$
 $L = 364.65$
 $T = 182.41$

Curve Data
 $\Delta = 3^{\circ}49'10''$
 $R = 1800'$
 $L = 119.99$
 $T = 60.02$

Curve Data
 $\Delta = 6^{\circ}31'29''$
 $R = 500'$
 $L = 56.94$
 $T = 28.50$

	Δ	R	L	T
8	02°27'51"	9900.71	425.81	212.94
9	04°28'20"	10005.71	781.00	390.70
10	04°10'43"	5000.00'	364.65'	182.41'
A	6°31'29"	500.00	56.94	28.50
B	3°49'10"	1800.00	119.99	60.018

BM 411-2LAC-58
ELEV. = 848.84
 Fd. C.S.W. & T. in conc. stop house on S.W. cor. of Cornell Rd. (Malibu Lake Rd.) 1.0' in from N.W. cor. 88' 11' Sta. 111 + 00 (Agoura Rd.)

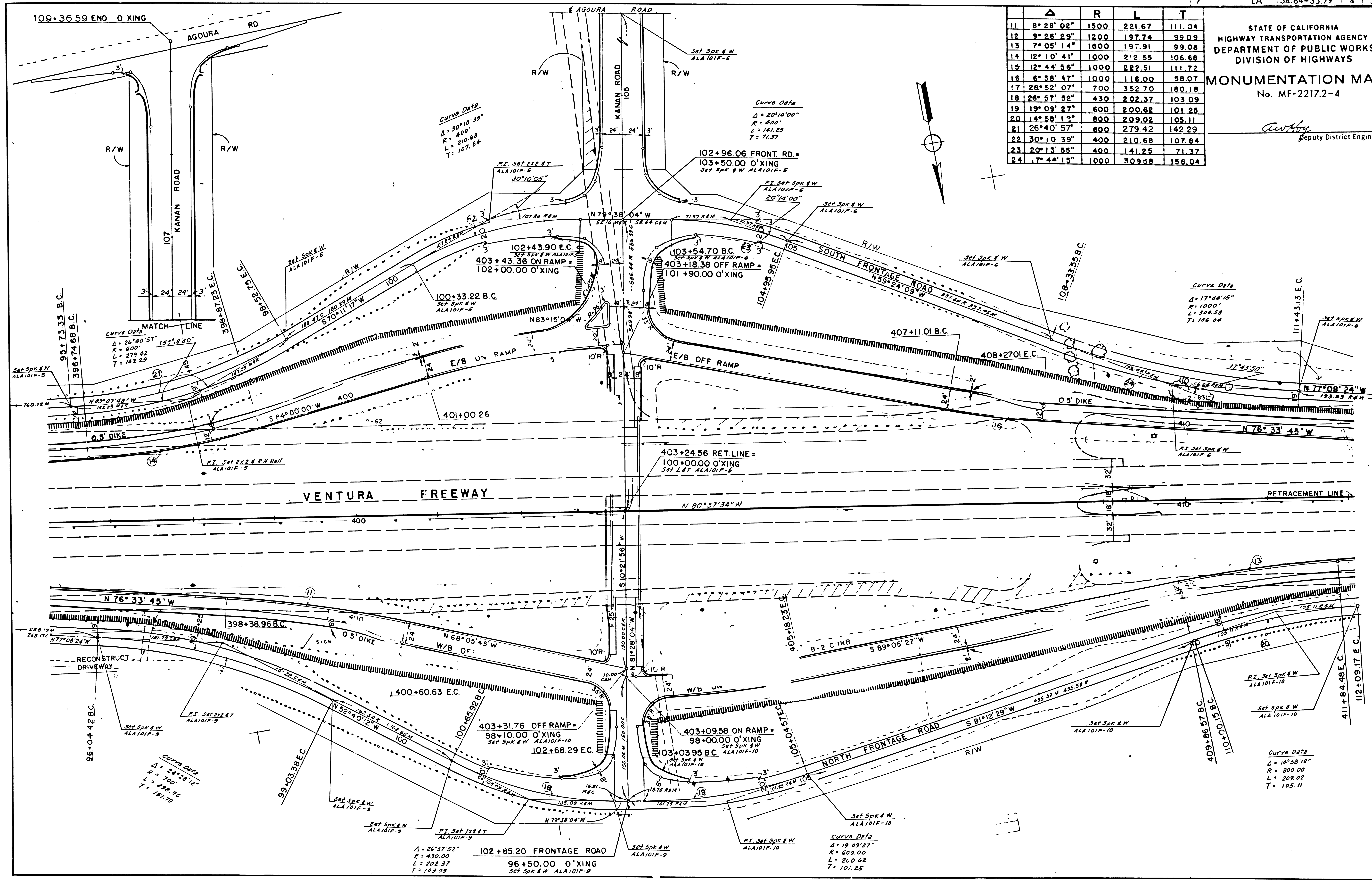
BM 417-2LAC-58
ELEV. = 858.54
 Fd. Bar & datum cap in conc. (Mon.) Ventura Blvd at Sta. 111 + 03.00 P.O.T. 0.6' down under P.M. Ret. Sta. 392 + 90.83

	Δ	R	L	T
11	8° 28' 02"	1500	221.67	111.04
12	9° 26' 29"	1200	197.74	99.09
13	7° 05' 14"	1600	197.91	99.08
14	12° 10' 41"	1000	212.55	106.68
15	12° 44' 56"	1000	222.51	111.72
16	6° 38' 17"	1000	116.00	58.07
17	28° 52' 07"	700	352.70	180.18
18	26° 57' 52"	430	202.37	103.09
19	19° 09' 27"	600	200.62	101.25
20	14° 58' 12"	800	209.02	105.11
21	26° 40' 57"	600	279.42	142.29
22	30° 10' 39"	400	210.68	107.84
23	20° 13' 55"	400	141.25	71.37
24	17° 44' 15"	1000	309.58	156.04

STATE OF CALIFORNIA
HIGHWAY TRANSPORTATION AGENCY
DEPARTMENT OF PUBLIC WORKS
DIVISION OF HIGHWAYS

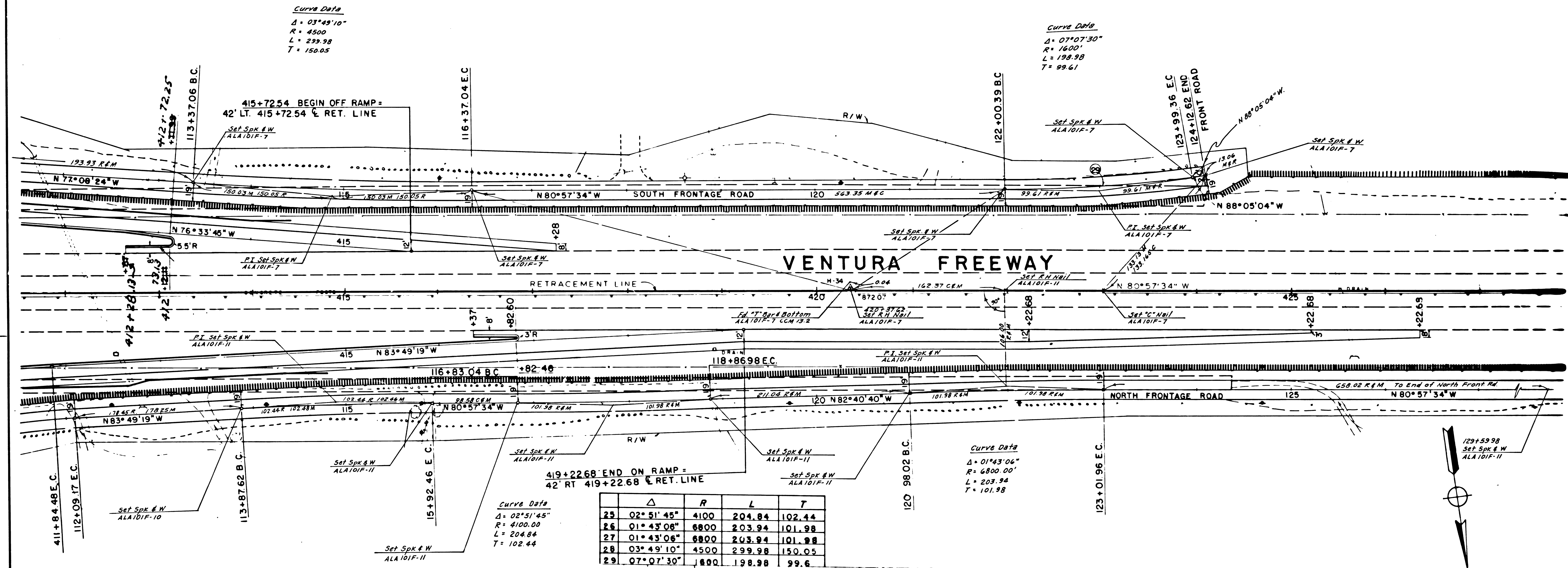
MONUMENTATION MAP
No. MF-2217.2-4

Anthony
Deputy District Engineer



STATE OF CALIFORNIA
 HIGHWAY TRANSPORTATION AGENCY
 DEPARTMENT OF PUBLIC WORKS
 DIVISION OF HIGHWAYS
MONUMENTATION MAP
 No. MF-2217.2-5

Anthony
 Deputy District Engineer



	Δ	R	L	T
25	02° 51' 45"	4100	204.84	102.44
26	01° 43' 06"	6800	203.94	101.98
27	01° 43' 06"	6800	203.94	101.98
28	03° 49' 10"	4500	299.98	150.05
29	07° 07' 30"	1600	198.98	99.6

BM 438-2LAc-58
 ELEV. = 872.07
 Fd. alum. cap on "T Bar" in conc. down
 0.4' E on E. VENT. IN MEDIAN STRIP AT
 Sta. 438+50.00 P.O.T. 100' East of

BM 443-2LAc-58
 ELEV. = 872.13
 Fd. chis. knob on N.W. cor. of D. I.
 on E. VENT. IN MEDIAN STRIP AT Sta.
 443+65. Painted "TP 245"

