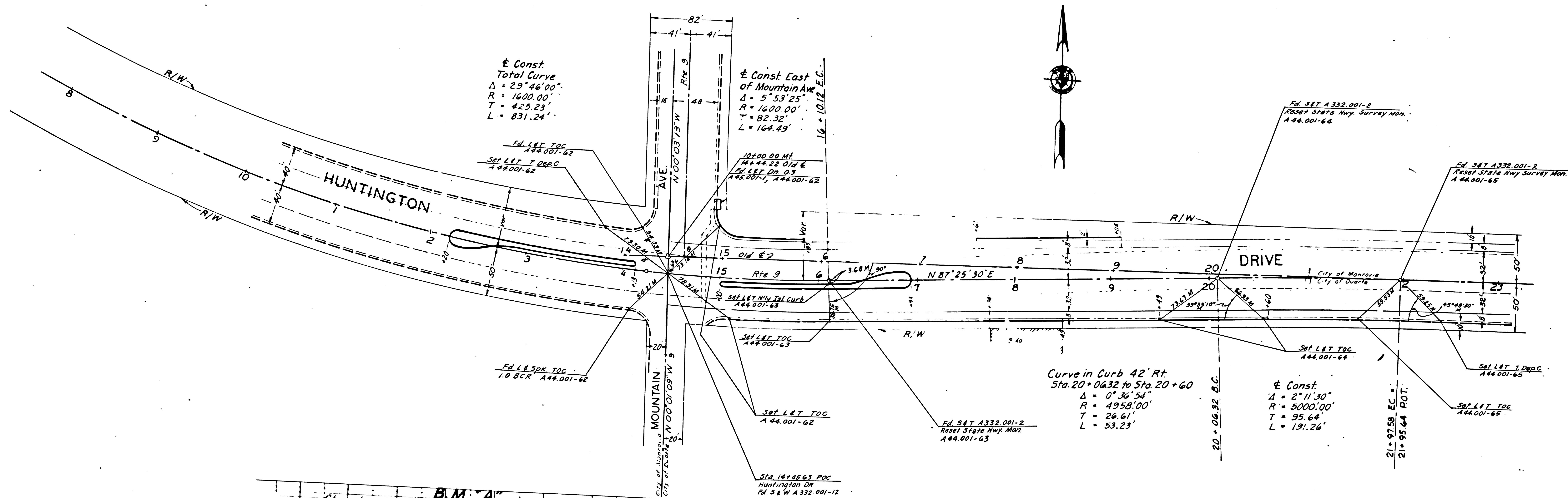


DIST.	COUNTY	ROUTE	POST MILES - TOTAL PROJECT	SHEET NO.	TOTAL SHEETS
7	LA	210	34.93-39.77	1	6

STATE OF CALIFORNIA
 TRANSPORTATION AGENCY
 DEPARTMENT OF PUBLIC WORKS
 DIVISION OF HIGHWAYS
MONUMENTATION MAP

Anthony

Deputy District Engineer



± Const.
 Total Curve
 $\Delta = 29^{\circ}46'00''$
 $R = 1600.00'$
 $T = 425.23'$
 $L = 831.24'$

± Const East
 of Mountain Ave
 $\Delta = 5^{\circ}53'25''$
 $R = 1600.00'$
 $T = 82.32'$
 $L = 164.49'$

Curve in Curb 42' RT
 Sta. 20+06.32 to Sta. 20+60
 $\Delta = 0^{\circ}36'54''$
 $R = 4958.00'$
 $T = 26.61'$
 $L = 53.23'$

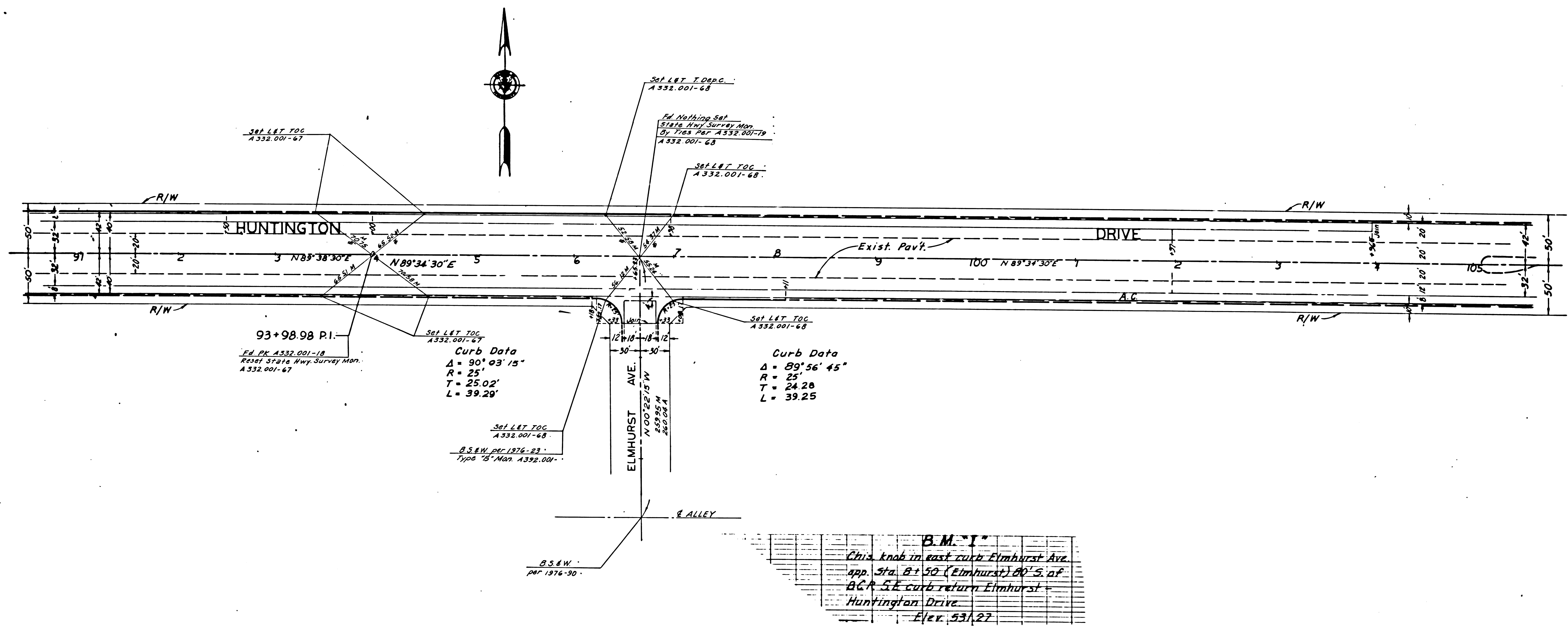
± Const.
 $\Delta = 2^{\circ}11'30''$
 $R = 5000.00'$
 $T = 95.64'$
 $L = 191.26'$

B.M. "A"
 Chis. knob in E. Curb Mountain Ave. (Monrovia)
 20' W. of ECR of N.E. Curb Return Mountain
 Ave and Huntington Drive
 Elev. 525.63

DIST.	COUNTY	ROUTE	POST MILES - TOTAL PROJECT	SHEET NO.	TOTAL SHEETS
7	LA	210	34.93-39.77	2	6

STATE OF CALIFORNIA
 TRANSPORTATION AGENCY
 DEPARTMENT OF PUBLIC WORKS
 DIVISION OF HIGHWAYS
MONUMENTATION MAP

Anthony
 Deputy District Engineer

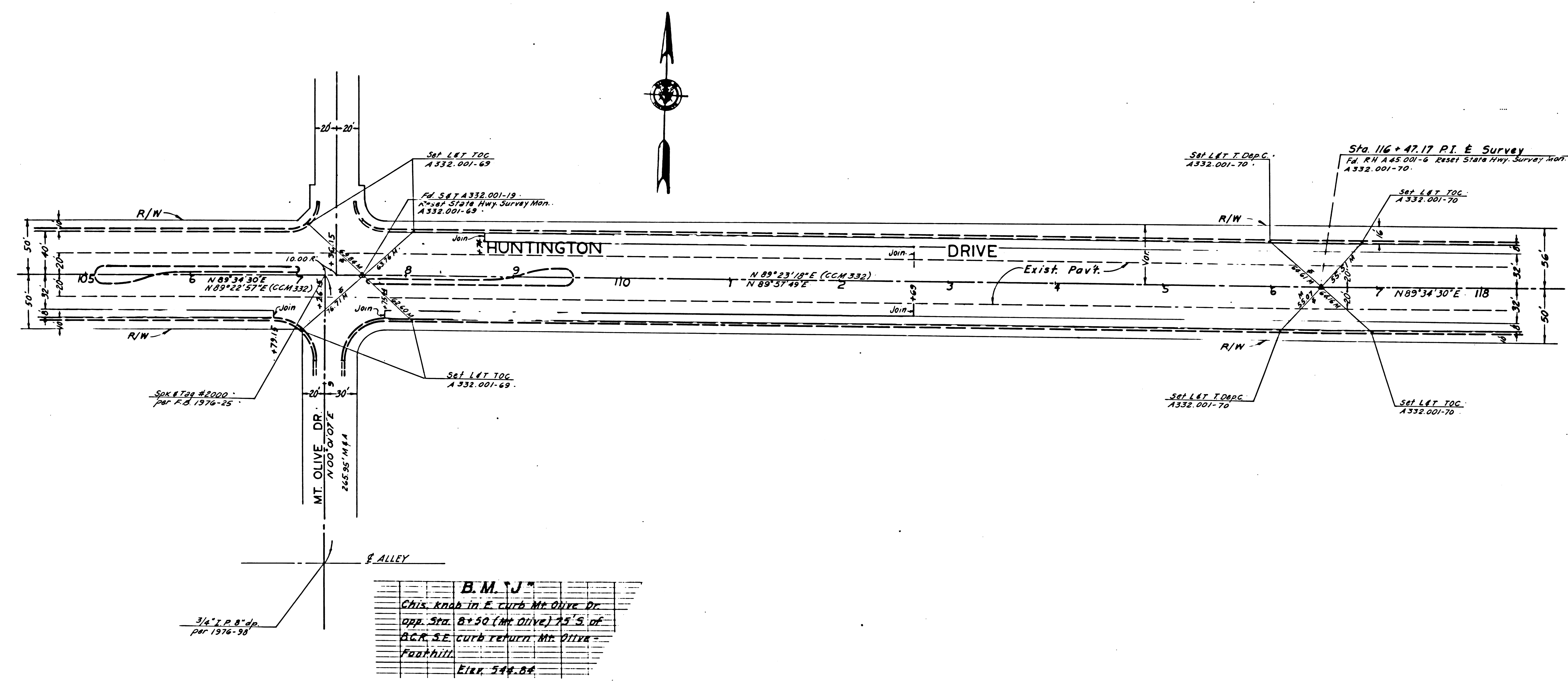


B.M. "I"
This knob in east curb Elmhurst Ave.
app. Sta. B+50 (Elmhurst) 80' S. of
B.C.R. S.E. curb return Elmhurst
Huntington Drive
Elev. 531.27

ROUTE	COUNTY	ROUTE	POST MILES - TOTAL PROJECT	SHEET NO.	TOTAL SHEETS
7	LA	210	34.93-39.77	3	6

STATE OF CALIFORNIA
 TRANSPORTATION AGENCY
 DEPARTMENT OF PUBLIC WORKS
 DIVISION OF HIGHWAYS
MONUMENTATION MAP

Anthony
 Deputy District Engineer

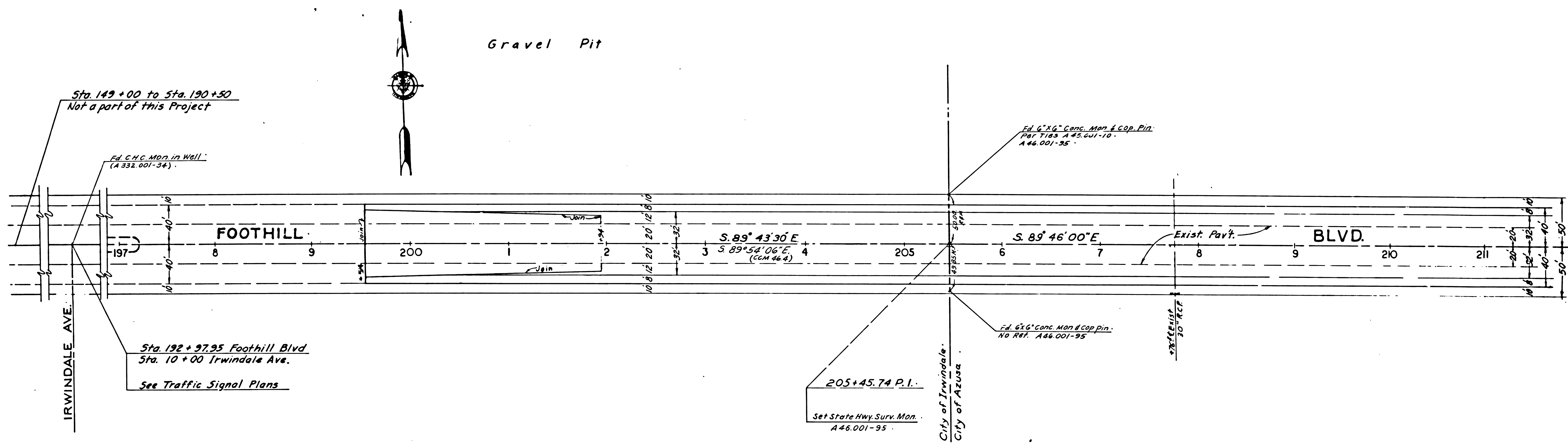


B.M. 'J'	
Chis. knob in E. curb Mt. Olive Dr.	
app. Sta. 8+50 (Mt. Olive) 75' S. of	
B.C.R. S.E. curb return Mt. Olive	
Foothill	
Exec. 544.84	

DIST	COUNTY	ROUTE	POST MILES - TOTAL PROJECT	SHEET NO.	TOTAL SHEETS
7	LA	210	34.93-39.77	5	6

STATE OF CALIFORNIA
 TRANSPORTATION AGENCY
 DEPARTMENT OF PUBLIC WORKS
 DIVISION OF HIGHWAYS
MONUMENTATION MAP

Anthony
 Deputy District Engineer



B.M. "S"

Ct. spk. in S side parlor pole #7807242E	
N side Foothill Blvd. 54' Lt. Sta. 200+30±	
Elev. 591.75	

B.M. "T"

Ct. spk. in S side PP #780746E N	
side Foothill Blvd. 54' Lt. Sta. 210+22±	
Elev. 592.58	

