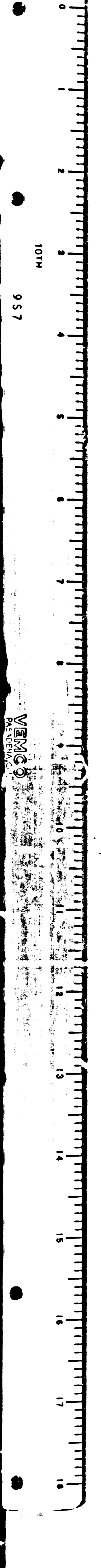
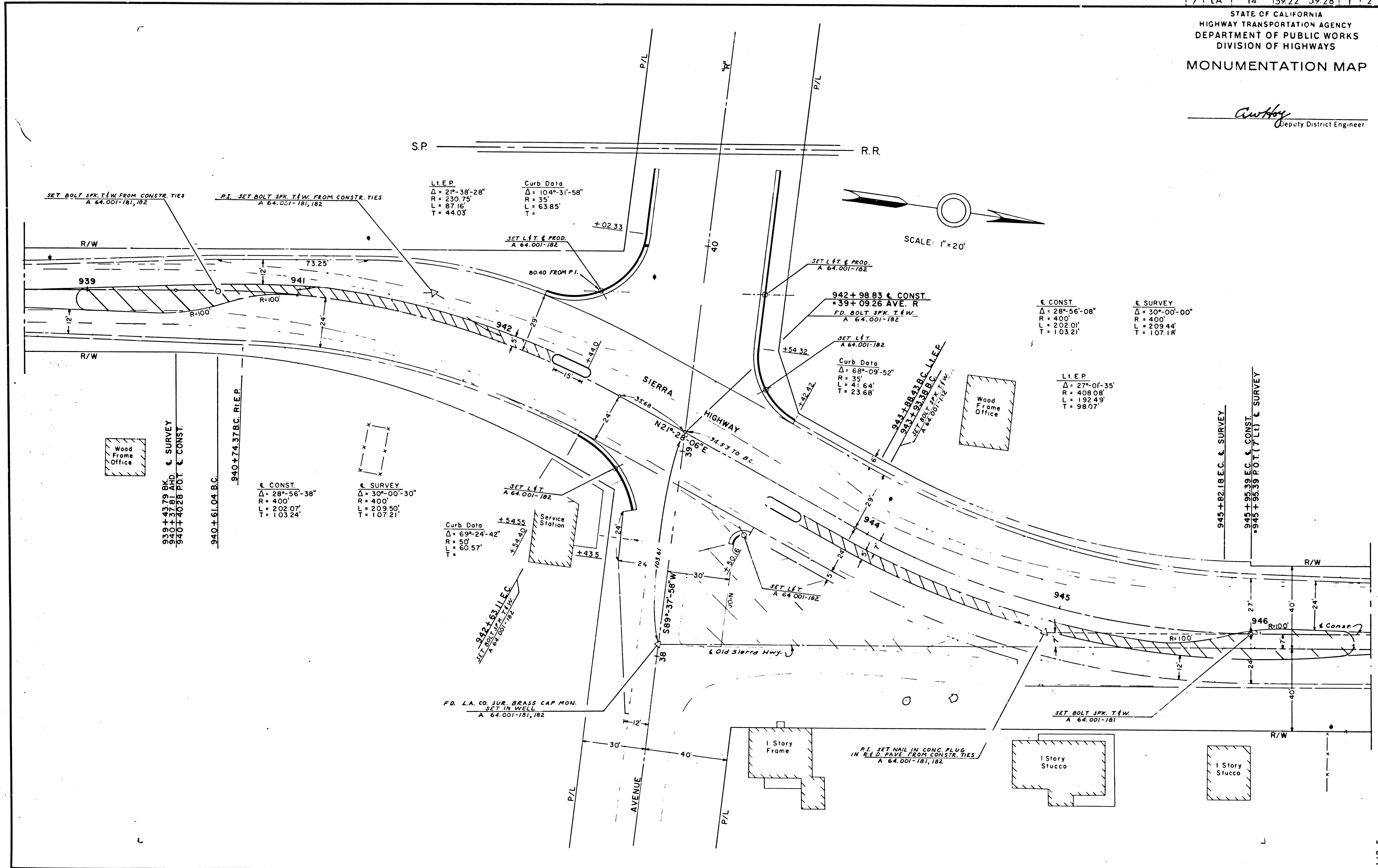


SHEET NO.	7	COUNTY	LA	DATE	59.22	TOTAL SHEETS	12
-----------	---	--------	----	------	-------	--------------	----

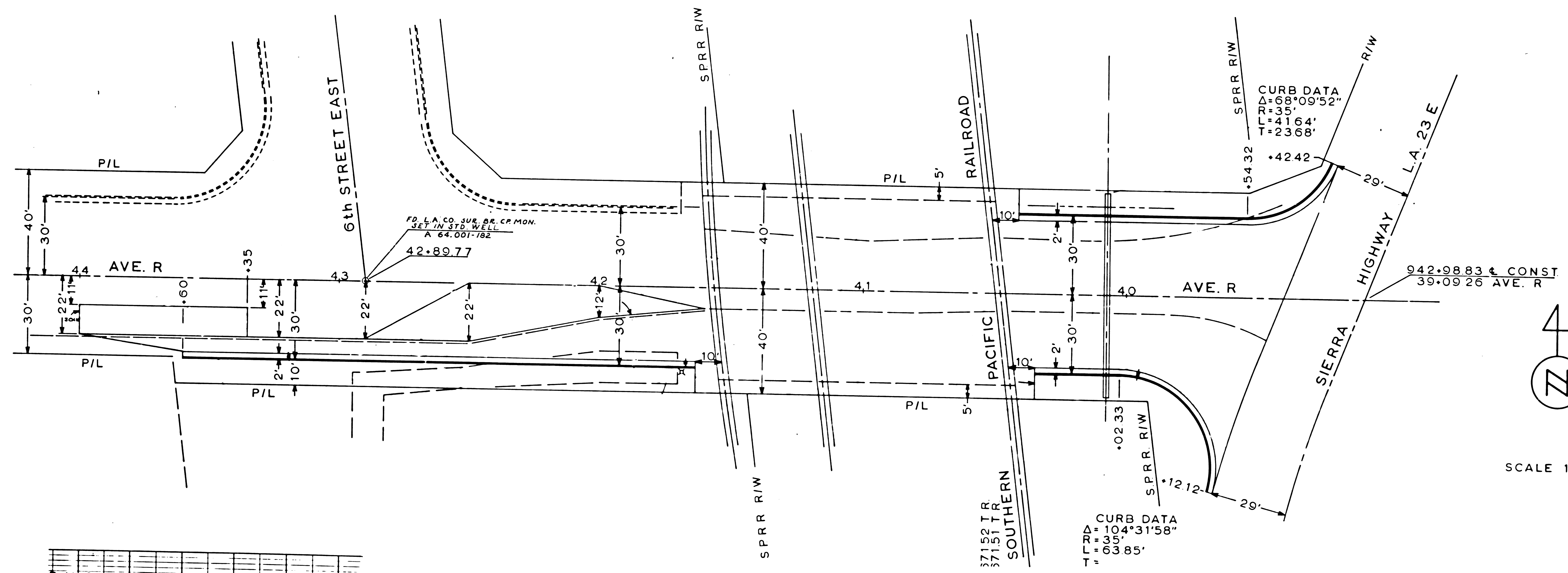
STATE OF CALIFORNIA
HIGHWAY TRANSPORTATION AGENCY
DEPARTMENT OF PUBLIC WORKS
DIVISION OF HIGHWAYS
MONUMENTATION MAP

Anthony
Deputy District Engineer

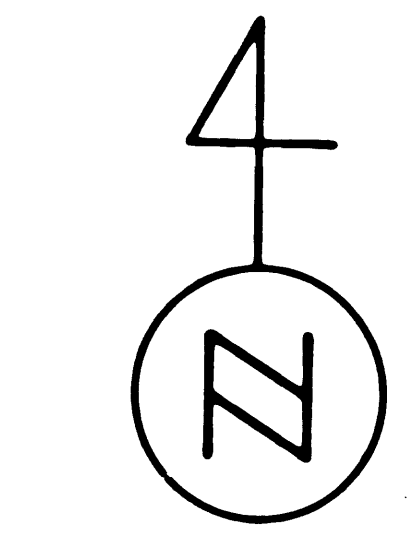


STATE OF CALIFORNIA
HIGHWAY TRANSPORTATION AGENCY
DEPARTMENT OF PUBLIC WORKS
DIVISION OF HIGHWAYS
MONUMENTATION MAP

Anthony
Deputy District Engineer



B.M.	S.L.	115
F.D. L.A. CO. SURVEY MON. AT $\frac{1}{4}$ OF AVE. R		
AND SIERRA HWY (PROD. FROM THE NORTH)		
USE E. EDGE OF MON. (PALMDALE 1955)		
STA. 38+05.79 W.C.A.L.C.		
ELEV. 2667.11 (STATE OF CALIF.)		



SCALE 1" = 20'