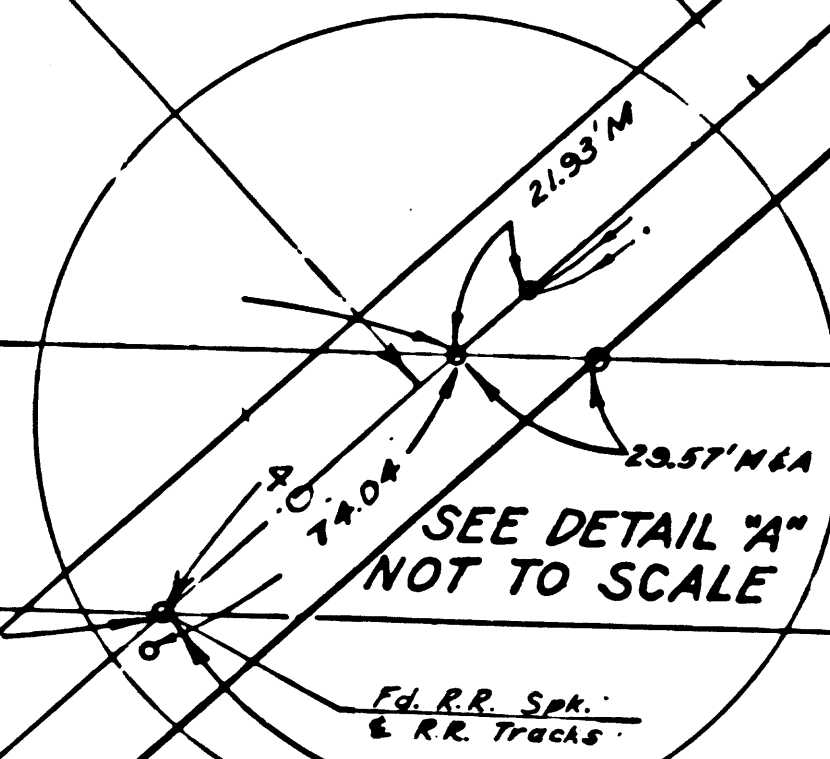
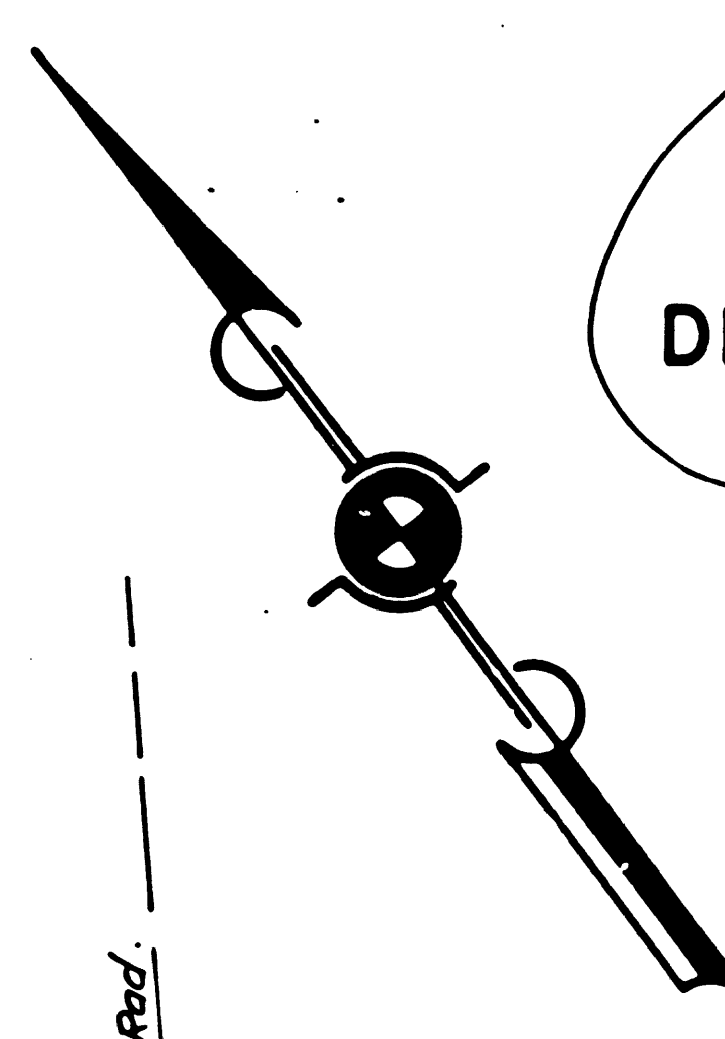
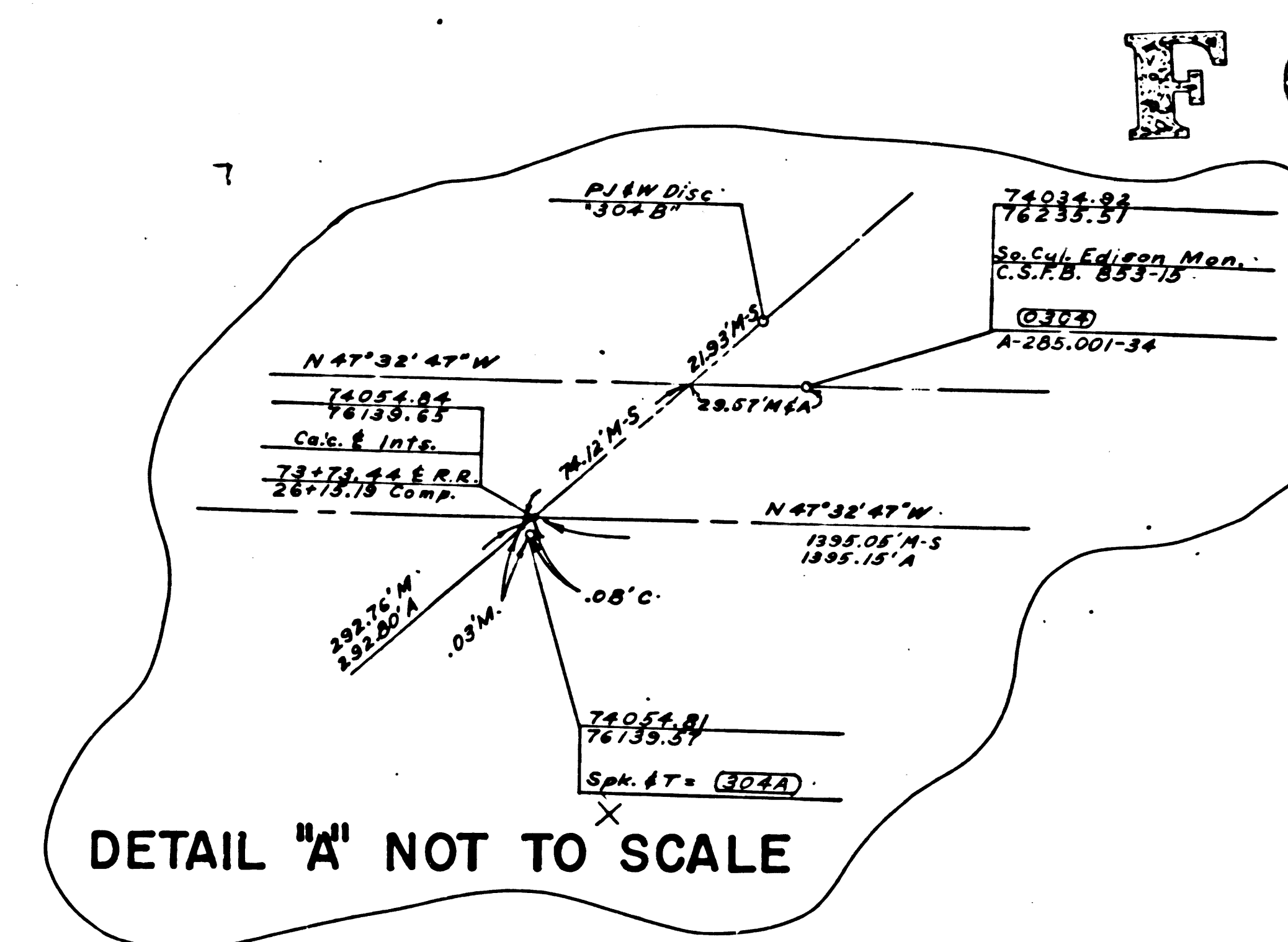
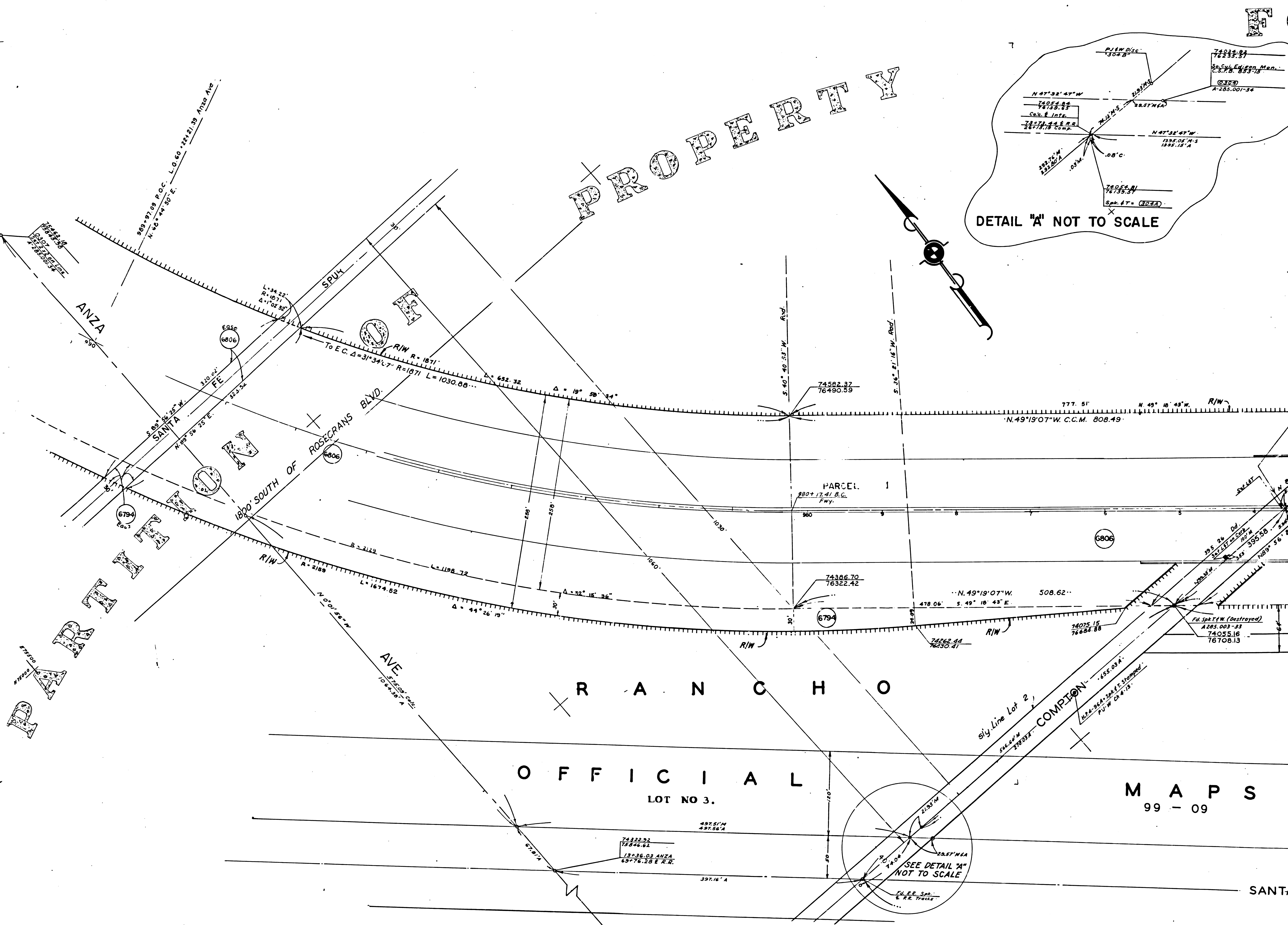


FOR CONTINUATION SEE MAP NO F-1920



MAPS 99 - 09

FORMERLY

OF

REDDON

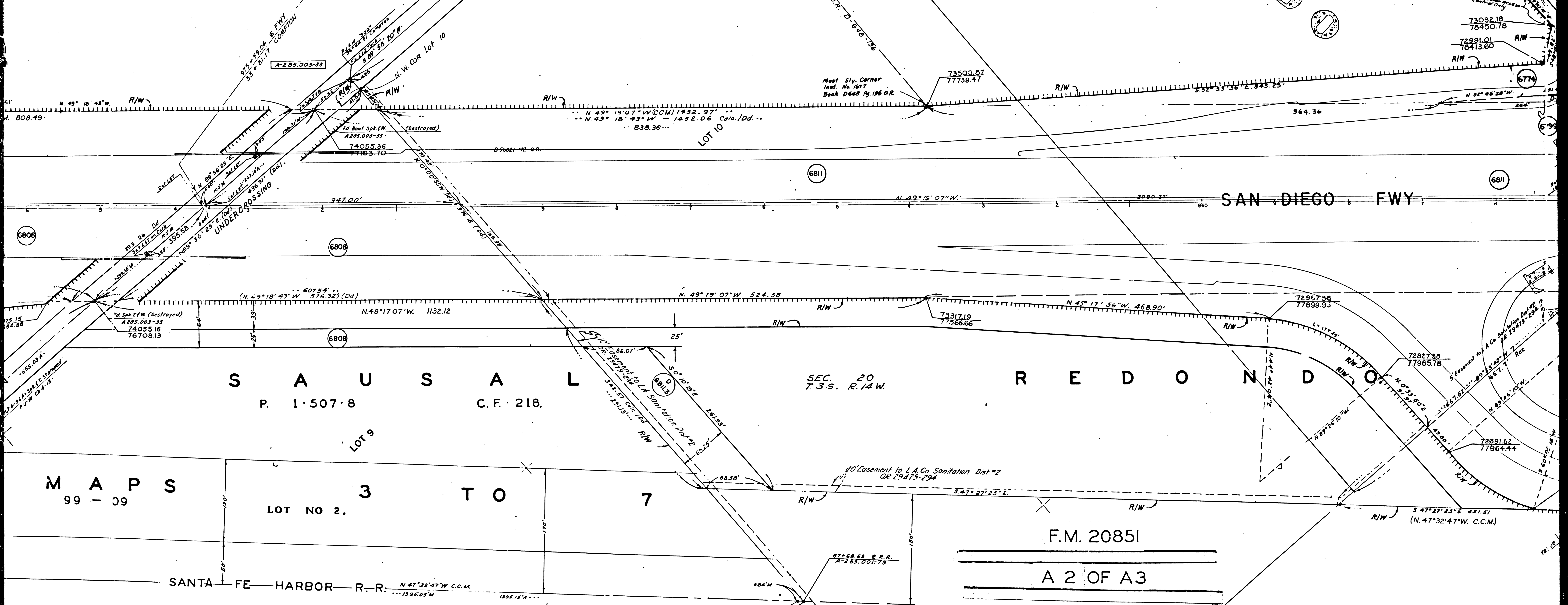
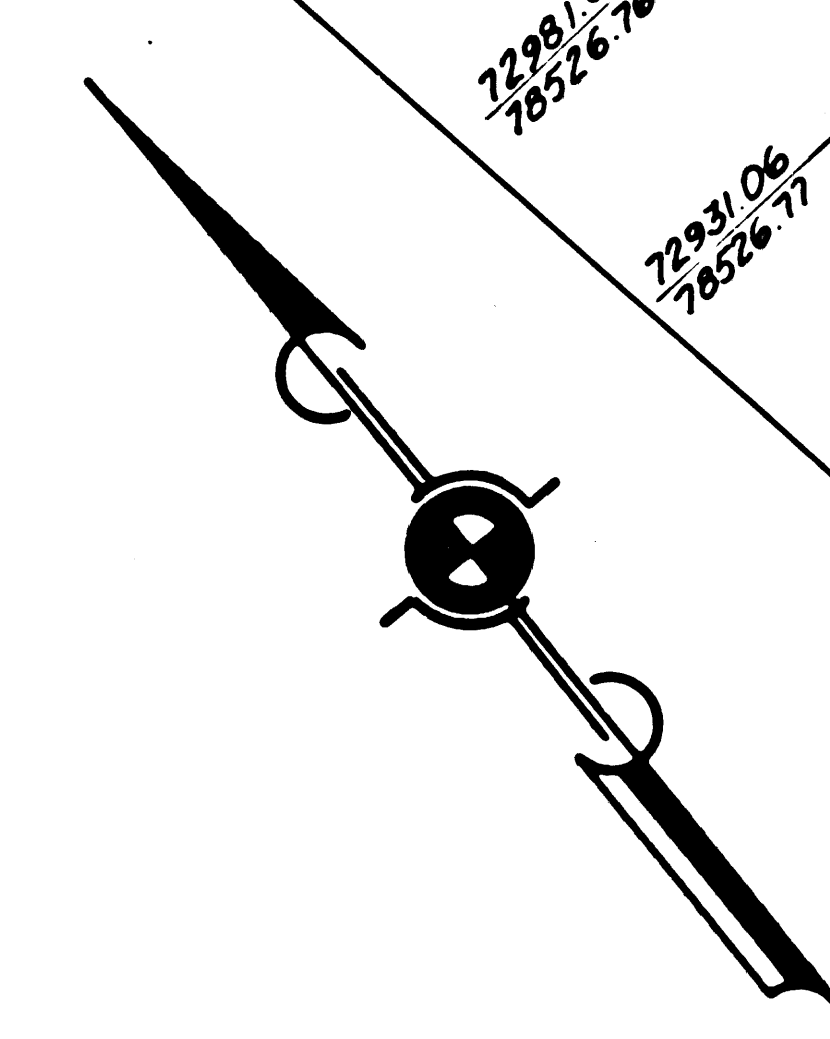
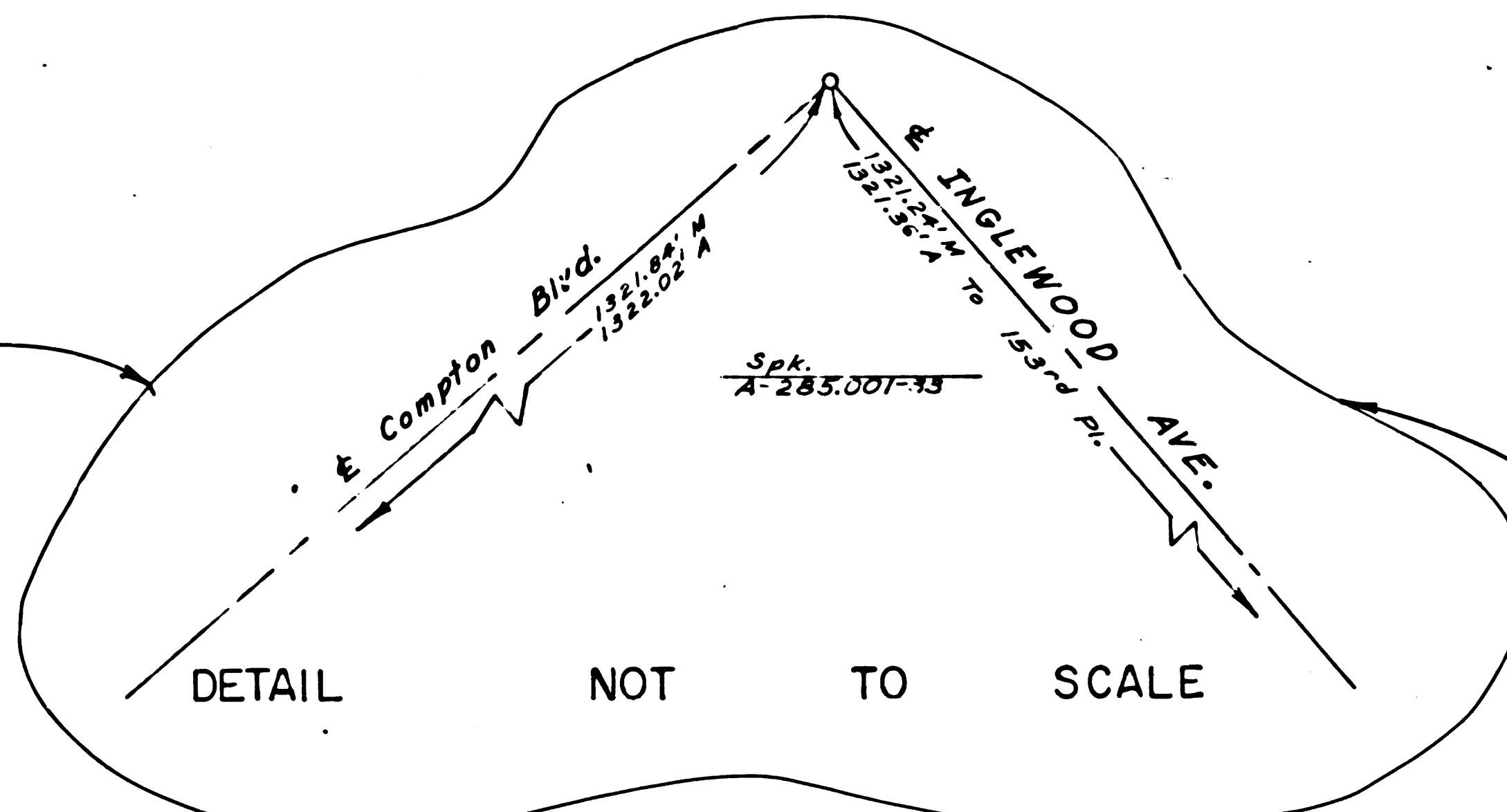
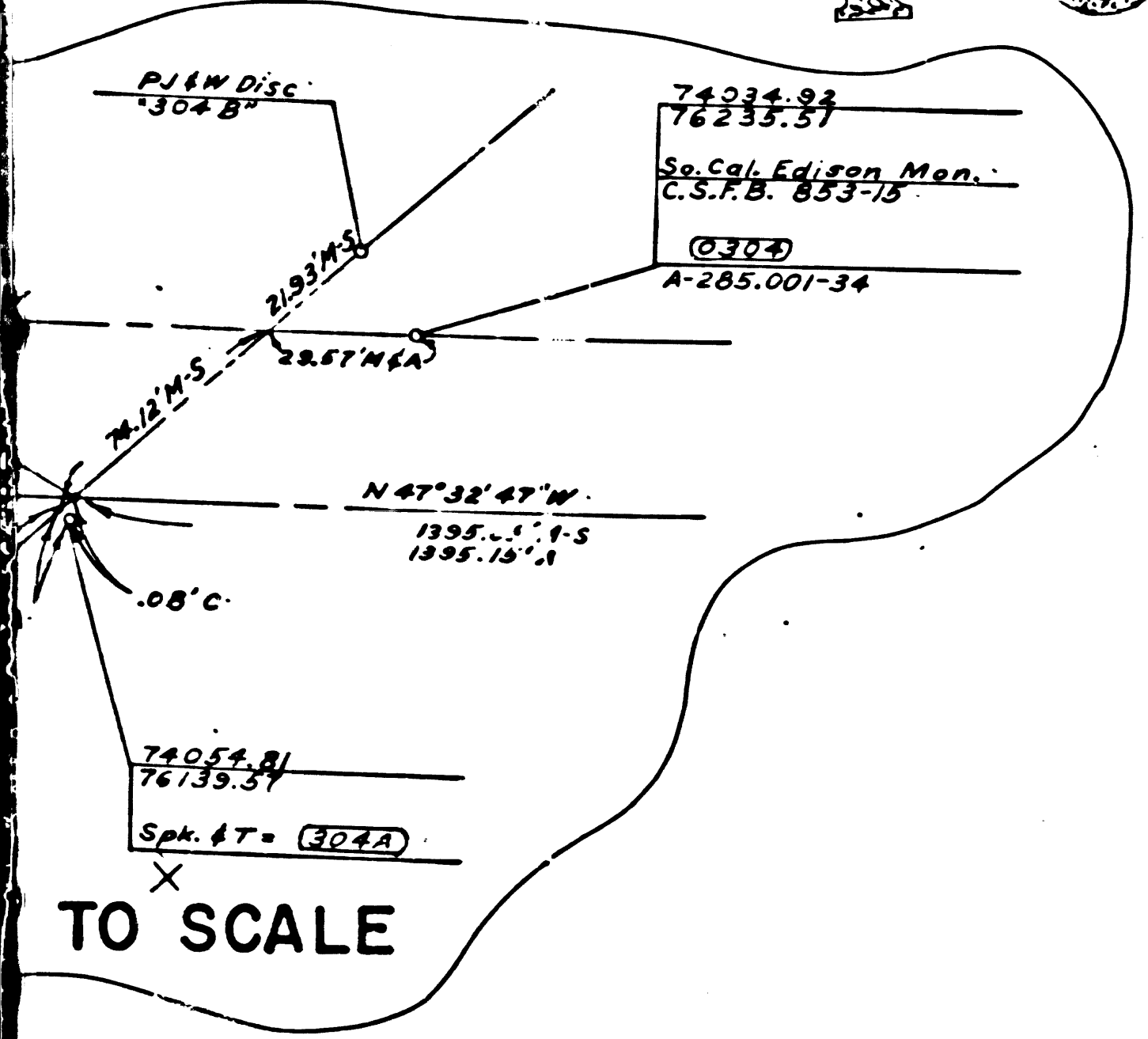
DETAIL

DETAIL NOT TO SCALE

SEE DETAIL

SEE DETAIL

TO SCALE



MAPS
99 - 09

S A U S A L
P. 1-507-8 C.F. 218.

SEC. 20
T. 3 S. R. 14 W.

R E D D O N

LOT NO. 2.

3

T O

7

F.M. 20851

A 2 OF A3

SANTA FE HARBOR R.R.

87° 58' 59" E.R.R.
A-285.001-73

(N. 47° 32' 47" W. C.C.M.)

7282738
7796578

7269162
7796444

7291736
7789993

7331719
7756666

7405516
7670813

7405536
7710370

7350087
7773947

7303218
7845078

7299101
7841360

68° 56' 35" REC
L 5925
R 125

NW CORNER LOT 97
TR. NO. 6578 MB 71-6

7298106
7852676

7293106
7852671

7293106
7852671

7293106
7852671

7293106
7852671

7293106
7852671

7293106
7852671

7293106
7852671

7293106
7852671

7293106
7852671

7293106
7852671

7293106
7852671

7293106
7852671

7293106
7852671

7293106
7852671

7293106
7852671

7293106
7852671

7293106
7852671

7293106
7852671

7293106
7852671

7293106
7852671

7293106
7852671

7293106
7852671

7293106
7852671

7293106
7852671

7293106
7852671

7293106
7852671

7293106
7852671

7293106
7852671

7293106
7852671

7293106
7852671

7293106
7852671

7293106
7852671

7293106
7852671

7293106
7852671

7293106
7852671

7293106
7852671

7293106
7852671

7293106
7852671

7293106
7852671

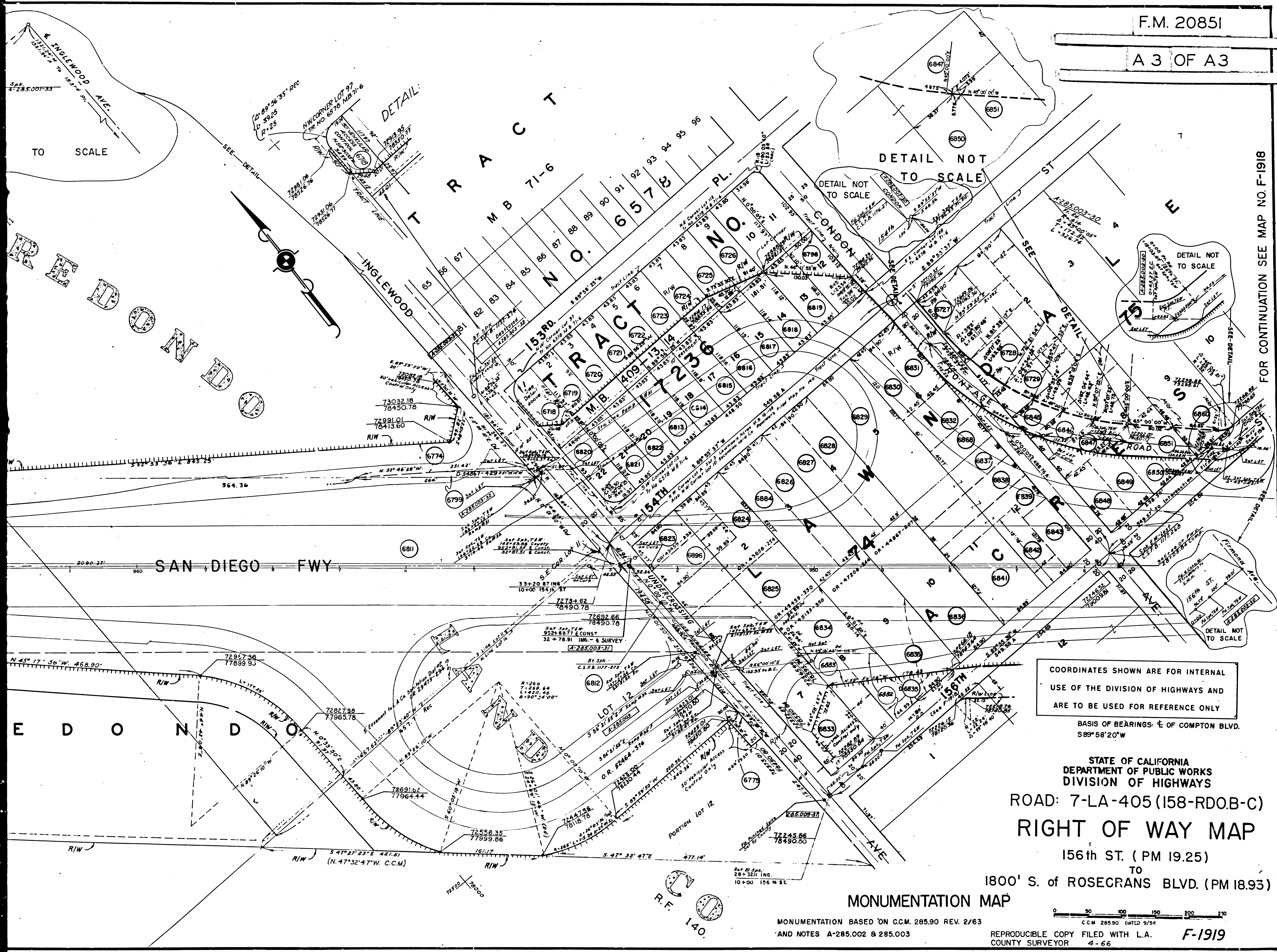
7293106
7852671

7293106
7852671

7293106
7852671

7293106
7852671

7293106
7852671



COORDINATES SHOWN ARE FOR INTERNAL USE OF THE DIVISION OF HIGHWAYS AND ARE TO BE USED FOR REFERENCE ONLY

BASIS OF BEARINGS: ϵ OF COMPTON BLVD. $S 89^{\circ} 58' 20'' W$

STATE OF CALIFORNIA
 DEPARTMENT OF PUBLIC WORKS
 DIVISION OF HIGHWAYS
 ROAD: 7-LA-405 (I58-RD0.B-C)
RIGHT OF WAY MAP
 156th ST. (PM 19.25)
 TO
 1800' S. of ROSECRANS BLVD. (PM 18.93)

MONUMENTATION MAP

MONUMENTATION BASED ON C.C.M. 285.90 REV. 2/63
 AND NOTES A-285.002 & 285.003

0 50 100 150 200 250
 C.C.M. 285.90 DATED 9/54

REPRODUCIBLE COPY FILED WITH L.A. COUNTY SURVEYOR 4-66

F-1919

FOR CONTINUATION SEE MAP NO. F-1918