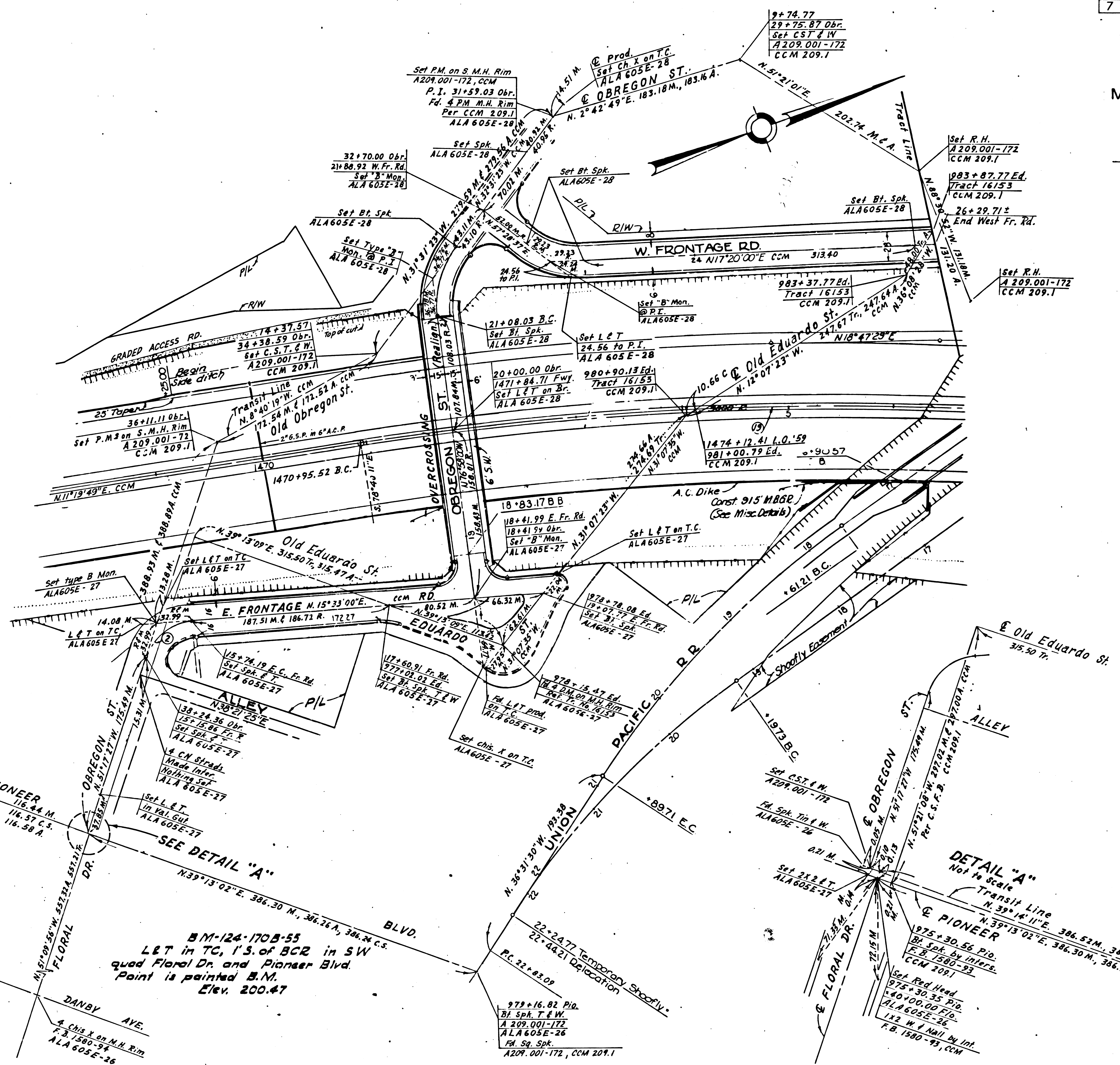


STATE OF CALIFORNIA
HIGHWAY TRANSPORTATION AGENCY
DEPARTMENT OF PUBLIC WORKS
DIVISION OF HIGHWAYS
MONUMENTATION MAP
No MF-1965-1

Anthony
Deputy District Engineer



R	Δ	T	L
60'	66°50'27"	38.59'	70.00'
50'	66°50'27"	32.99'	58.33'
15'	121°58'56"	27.05'	31.93'
38'	35°12'38"	12.06'	23.35'
50'	23°40'08"	10.48'	20.66'
1'	165°48'48"	9.37'	2.89'
100'	18°06'20"	15.93'	31.60'
100'	24°34'48"	21.79'	42.90'
20'	70°20'44"	14.09'	24.56'
5'	33°12'10"	1.49'	2.90'
10'	133°18'25"	11.45'	11.64'
18'	92°31'00"	18.81'	23.27'
18'	87°29'00"	17.23'	27.48'
20'	44°26'37"	36.77'	69.81'
30'	90°00'00"	25.00'	39.27'
25'	90°00'00"	25.00'	39.27'
80'	40°08'37"	29.23'	56.05'
3000'	33°59'08"	916.78'	1779.48'

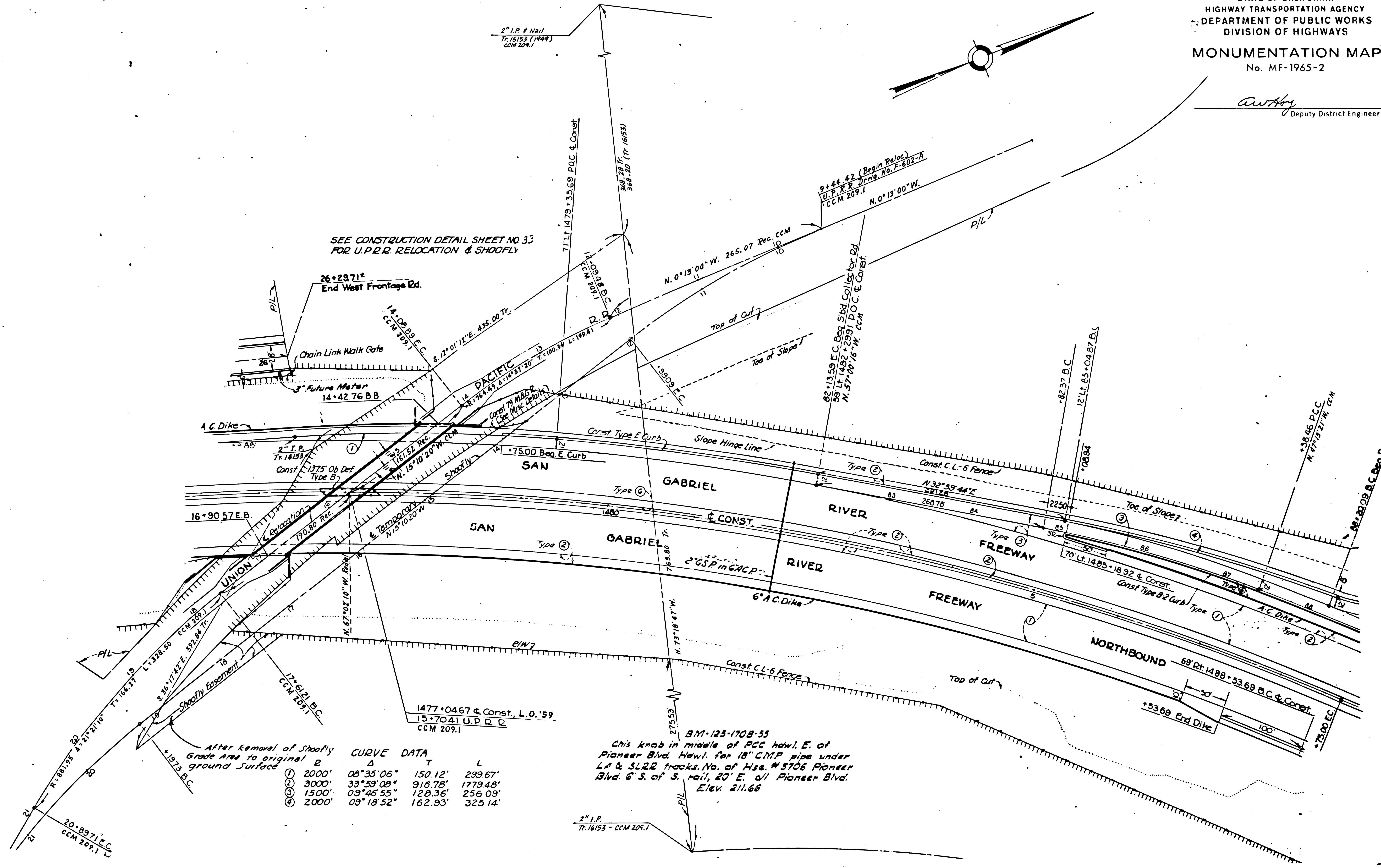
SEE DETAIL "A"
B/M-124-170B-55
LET in TC, I'S. of BCR in SW
quad Floral Dr. and Pioneer Blvd.
Point is painted B.M.
Elev. 200.47

DETAIL "A"
Not to Scale
Transit Line
N. 39°13'02" E. 386.52 M. 386.36 A. CCM
B/L Spk. by Inters.
F.B. 280-93
CCM 209.1
Set Red Head
975+30.56 P.D.
140+00.00 F.D.
ALA 605E-26
132 W.L. NMI by Int.
R.B. 150-93, CCM

DIST	COUNTY	NO. IN	4th W. L.S.	TOTAL PROJECT	SHEET NO.	TOTAL SHEETS
7	LA	605	13.55	- 16.85	6	16

STATE OF CALIFORNIA
HIGHWAY TRANSPORTATION AGENCY
DEPARTMENT OF PUBLIC WORKS
DIVISION OF HIGHWAYS
MONUMENTATION MAP
No. MF-1965-2

awhy
Deputy District Engineer



SEE CONSTRUCTION DETAIL SHEET NO 33
FOR U.P.R.R. RELOCATION & SHOOFLY

26+29.71*
End West Frontage Rd.
Chain Link Walk Gate
Future Meter
14+42.76 B.B.

CURVE DATA

Δ	T	L
① 2000'	08°35'06"	150.12' 299.67'
② 3000'	33°59'08"	916.78' 1779.48'
③ 1500'	09°46'55"	120.36' 256.09'
④ 2000'	09°18'52"	162.93' 325.14'

B.M. 125-170B-55
This knob in middle of PCC hawl, E. of
Pioneer Blvd. Hawl. for 18" CMP pipe under
LA & SLRR tracks. No. of Hse. # 5706 Pioneer
Blvd. 6' S. of S. rail, 20' E. of Pioneer Blvd.
Elev. 211.66

Top

7	LA	605	13.55 - 16.85	7	18
---	----	-----	---------------	---	----

STATE OF CALIFORNIA
HIGHWAY TRANSPORTATION AGENCY
DEPARTMENT OF PUBLIC WORKS
DIVISION OF HIGHWAYS

MONUMENTATION MAP
No. MF-1965-3

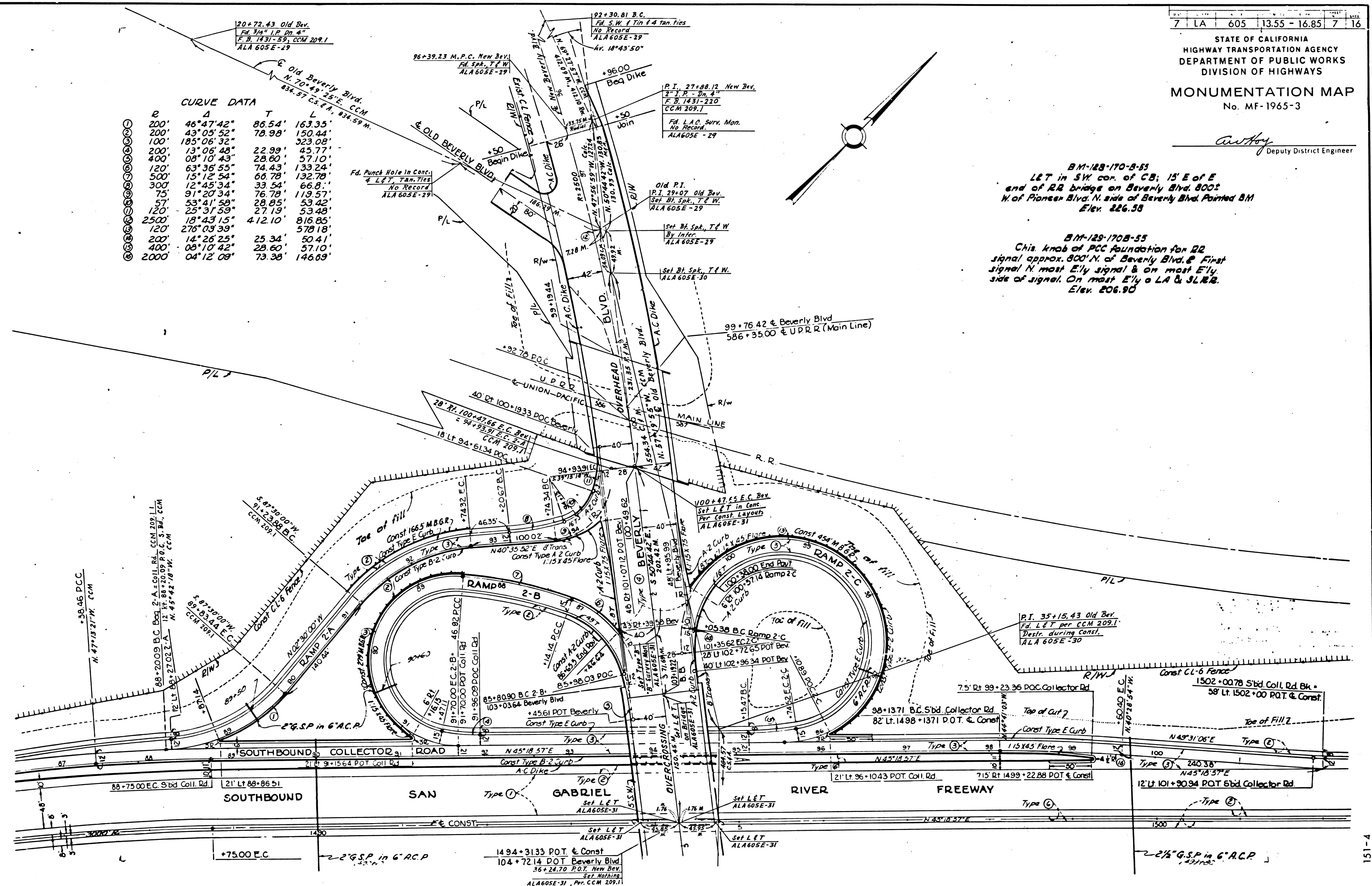
C. W. Hoy
Deputy District Engineer

BM-128-170-B-55
L&T in SW cor. of CB; 15' E of E
end of RR bridge on Beverly Blvd. 800'
W of Pioneer Blvd. N. side of Beverly Blvd. Painted BM
Elev. 226.58

BM-128-170-B-55
Chis. knob of PCC foundation for RR
signal approx. 800' N. of Beverly Blvd. & First
signal N. most E'ly signal & on most E'ly
side of signal. On most E'ly a LA & SLR.B.
Elev. 206.90

CURVE DATA

R	Δ	T	L
200'	46°47'42"	86.54'	163.35'
200'	43°05'52"	78.98'	150.44'
100'	185°06'32"		323.08'
200'	13°06'46"	22.99'	45.77'
400'	08°10'43"	28.60'	57.10'
120'	63°36'55"	74.43'	132.24'
500'	12°45'34"	33.54'	66.81'
300'	91°20'34"	76.78'	119.57'
75'	53°41'58"	28.85'	53.42'
120'	25°31'58"	27.19'	53.48'
2500'	18°43'15"	4.12.10'	8.16.85'
120'	276°03'39"		578.18'
200'	14°26'25"	25.34'	50.41'
400'	08°10'42"	28.60'	57.10'
2000'	04°12'08"	73.38'	146.69'



F.M. 20860 | SHT. 3

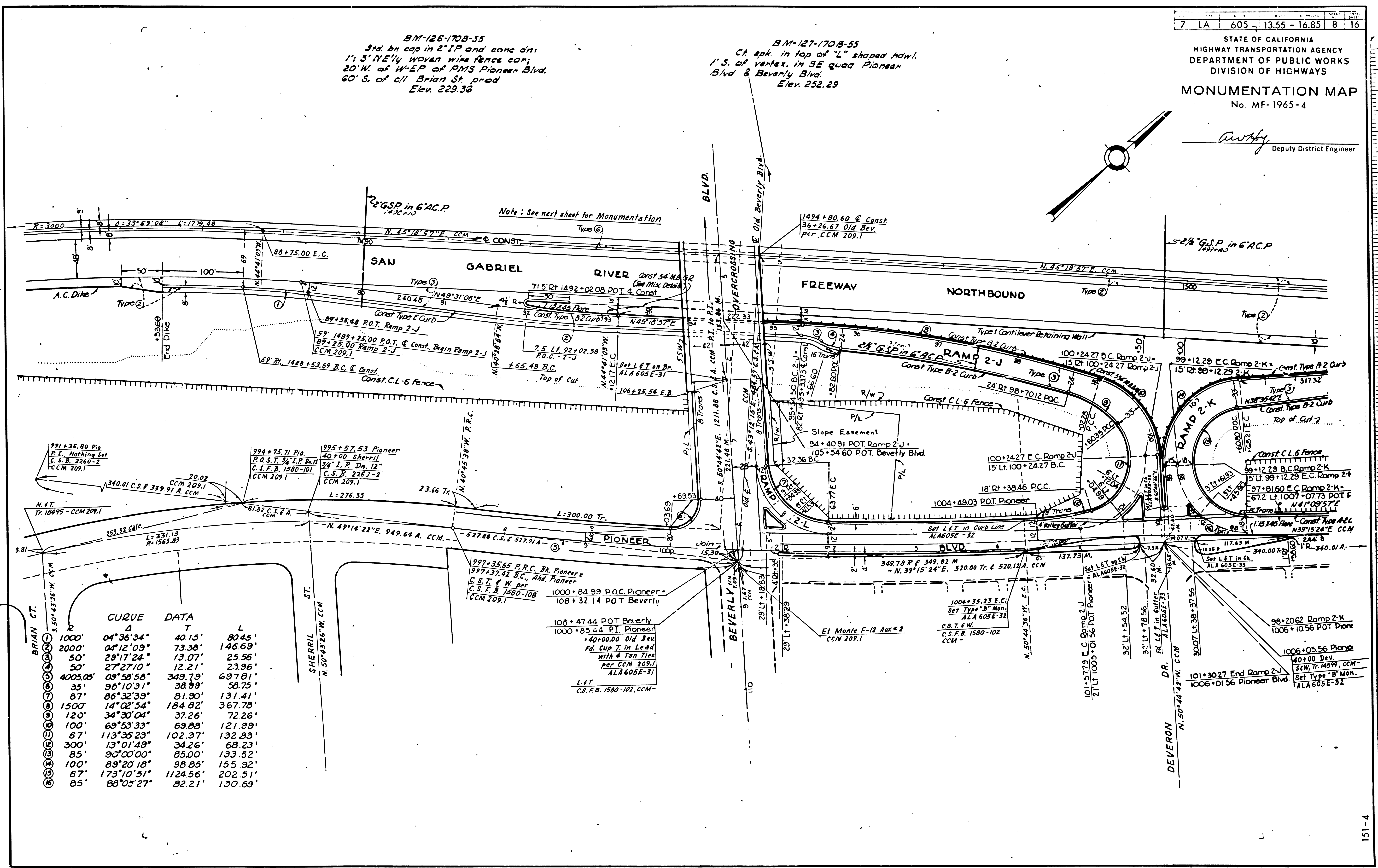
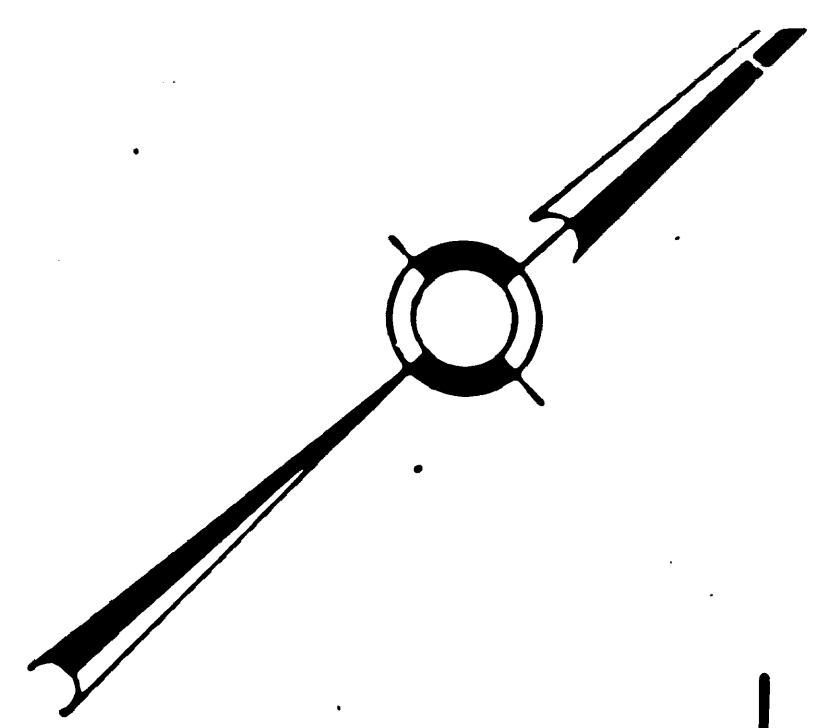
151-4

STATE OF CALIFORNIA
HIGHWAY TRANSPORTATION AGENCY
DEPARTMENT OF PUBLIC WORKS
DIVISION OF HIGHWAYS
MONUMENTATION MAP
No. MF-1965-4

Awby
Deputy District Engineer

BM-126-170B-55
Std. br cap in 2" I.P. and conc dn:
1'; 5" NE'ly woven wire fence cor;
20' W. of W-EP of PMS Pioneer Blvd.
60' S. of c/l Brian St. prod
Elev. 229.36

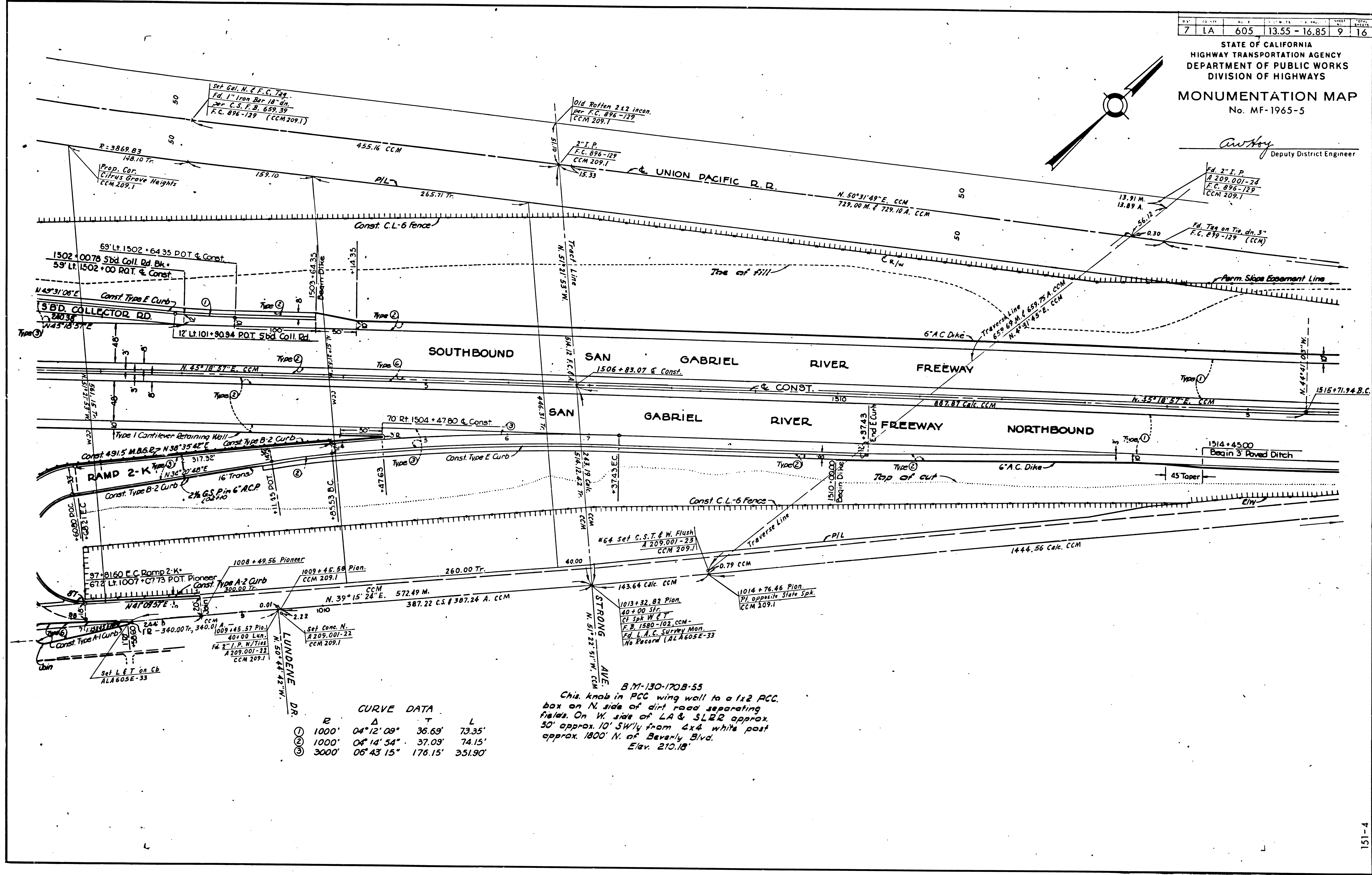
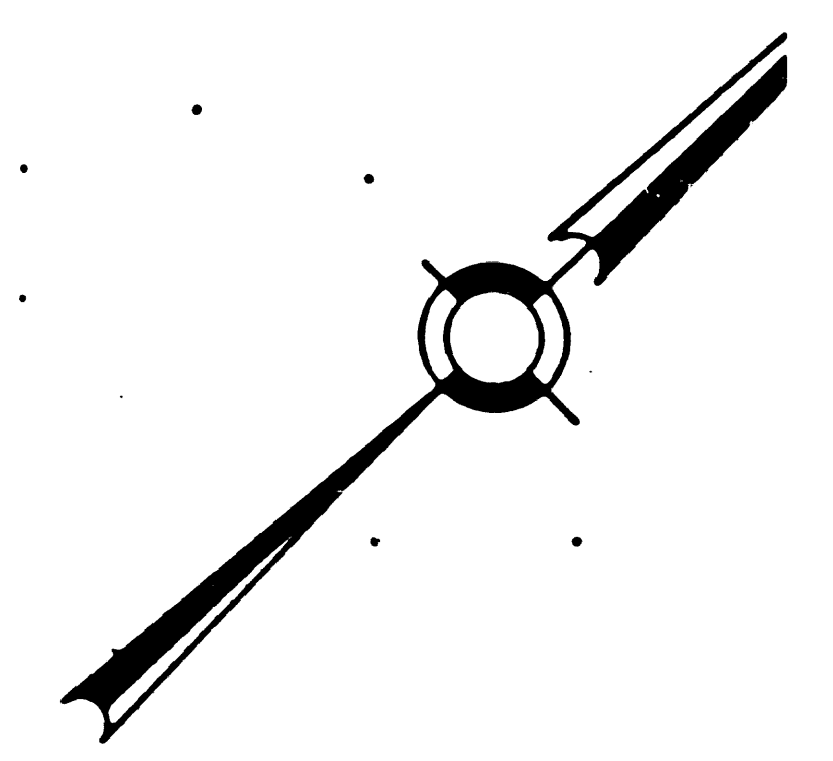
BM-127-170B-55
Ct. spk. in top of "L" shaped hawl.
1' S. of vertex in SE quad Pioneer
Blvd & Beverly Blvd.
Elev. 252.29



7	LA	605	13.55 - 16.85	9	16
---	----	-----	---------------	---	----

STATE OF CALIFORNIA
HIGHWAY TRANSPORTATION AGENCY
DEPARTMENT OF PUBLIC WORKS
DIVISION OF HIGHWAYS
MONUMENTATION MAP
No. MF-1965-5

Anthony
Deputy District Engineer



CURVE DATA

R	Δ	T	L
① 1000'	04°12'09"	36.69'	73.35'
② 1000'	04°14'54"	37.09'	74.15'
③ 3000'	06°43'15"	176.15'	351.90'

B.M.-130-1708-53
Chis. knob in PCC wing wall to a 1x2 PCC box on N. side of dirt road separating fields. On W. side of LA & SLR approx. 50' approx. 10' SW'ly from 4x4 white post approx. 1800' N. of Beverly Blvd. Elev. 210.18'

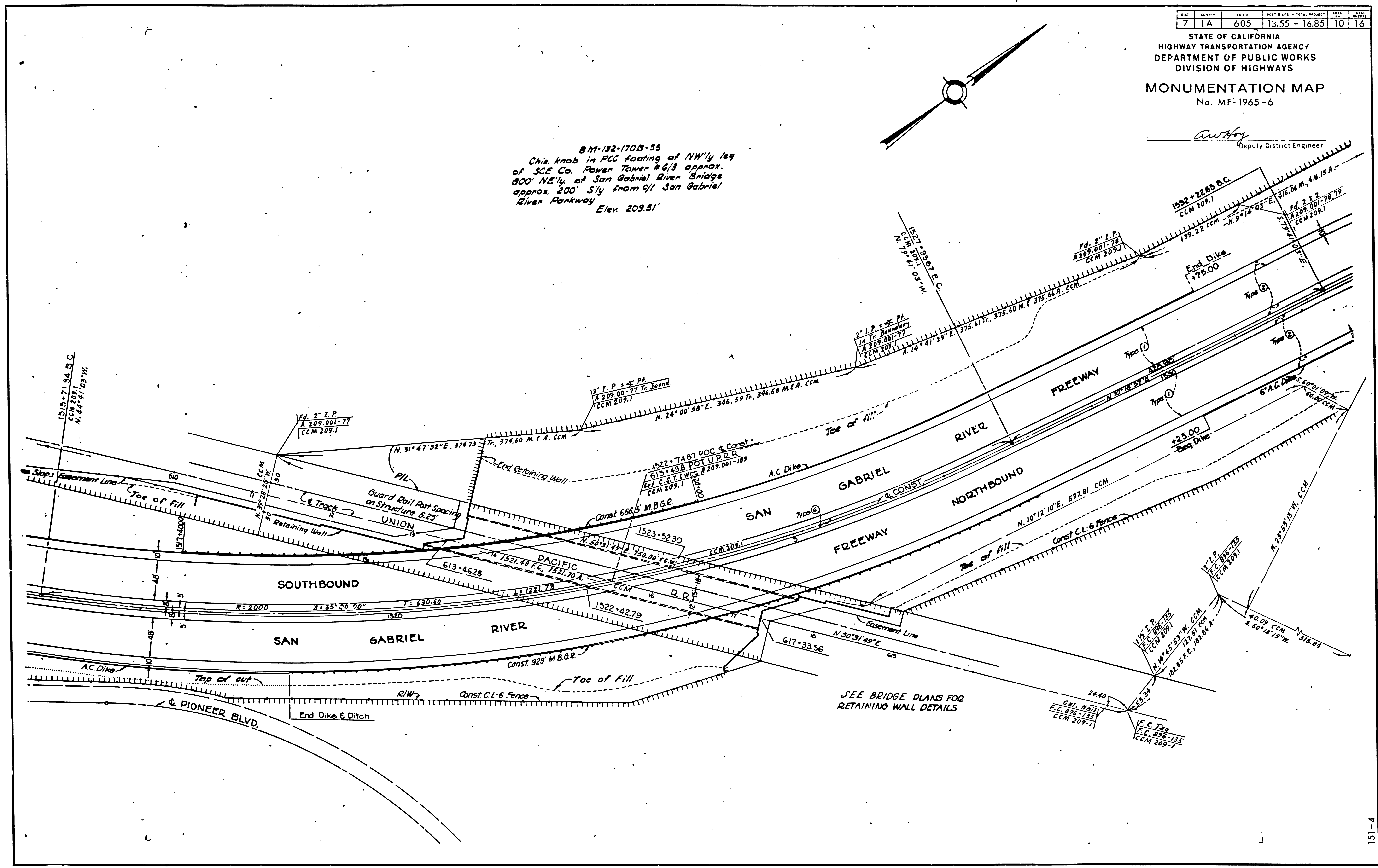
SHEET NO.	TOTAL SHEETS
7	10

STATE OF CALIFORNIA
HIGHWAY TRANSPORTATION AGENCY
DEPARTMENT OF PUBLIC WORKS
DIVISION OF HIGHWAYS

MONUMENTATION MAP
No. MF-1965-6

Anthony
Deputy District Engineer

BM-132-170B-55
Chis. knob in PCC footing of NW'ly leg
of SCE Co. Power Tower #6/3 approx.
800' NE'ly of San Gabriel River Bridge
approx. 200' S'ly from 4/1 San Gabriel
River Parkway
Elev. 209.51'



F.M. 20860 SHT. 6

151-4

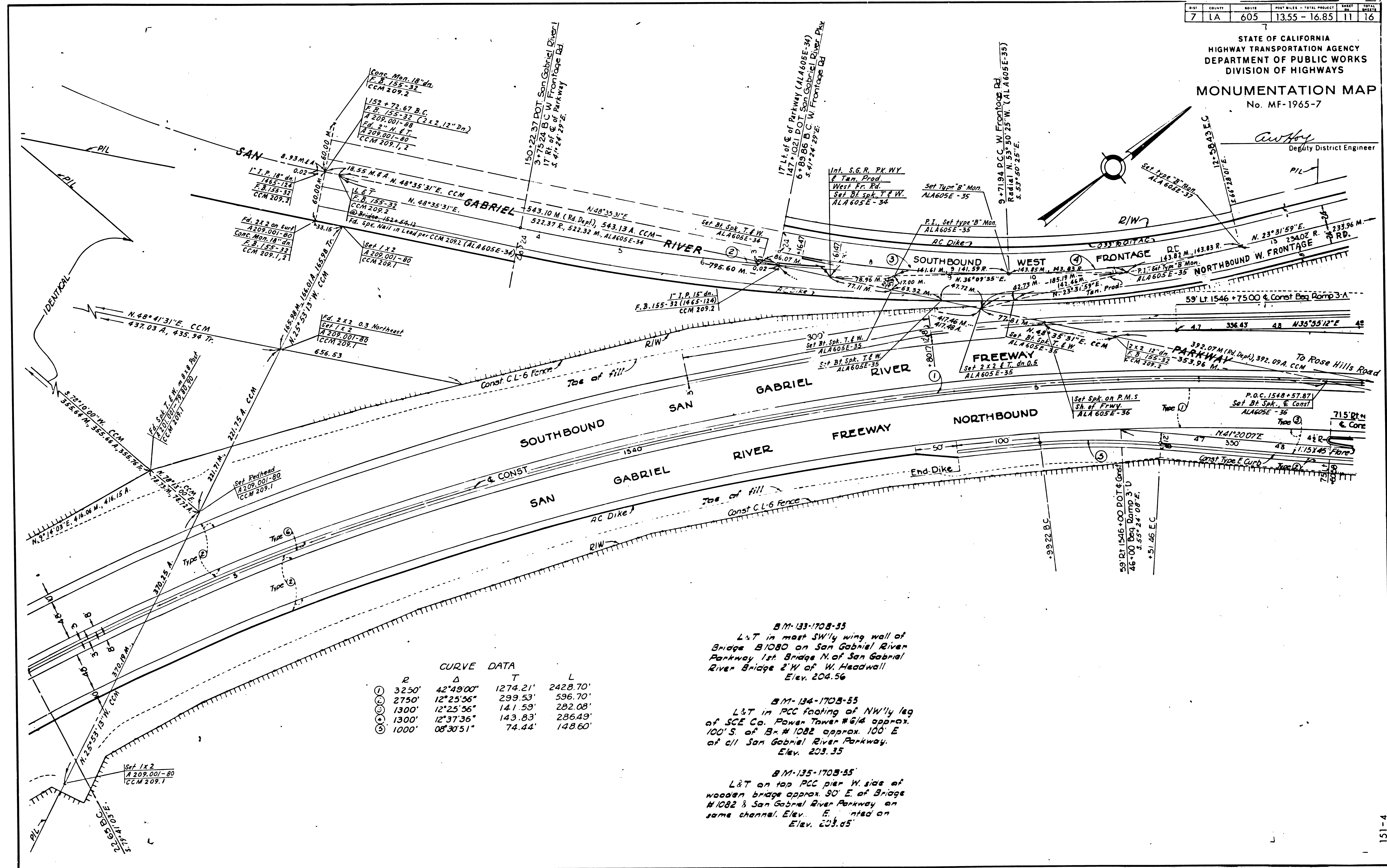
SHEET	COUNTY	ROUTE	POST MILES - TOTAL PROJECT	SHEET NO.	TOTAL SHEETS
7	LA	605	13.55 - 16.85	11	16

STATE OF CALIFORNIA
HIGHWAY TRANSPORTATION AGENCY
DEPARTMENT OF PUBLIC WORKS
DIVISION OF HIGHWAYS

MONUMENTATION MAP

No. MF-1965-7

C. W. Hays
Deputy District Engineer



CURVE DATA

R	Δ	T	L
① 3250'	42°49'00"	1274.21'	2428.70'
② 2750'	12°25'56"	299.53'	596.70'
③ 1300'	12°25'56"	141.59'	282.08'
④ 1300'	12°37'36"	143.83'	286.49'
⑤ 1000'	08°30'51"	74.44'	148.60'

BM-133-1708-55
L&T in most SW'ly wing wall of Bridge #1080 on San Gabriel River Parkway 1st Bridge N. of San Gabriel River Bridge 2'W of W. Headwall
Elev. 204.56

BM-134-1708-55
L&T in PCC footing of NW'ly leg of SCE Co. Power Tower #6/A approx. 100' S. of B.M. #1082 approx. 100' E. of all San Gabriel River Parkway.
Elev. 203.35

BM-135-1708-55
L&T on top PCC pier W. side of wooden bridge approx. 90' E. of Bridge #1082 & San Gabriel River Parkway on same channel. Elev. E. noted on Elev. 203.65

STATE OF CALIFORNIA
HIGHWAY TRANSPORTATION AGENCY
DEPARTMENT OF PUBLIC WORKS
DIVISION OF HIGHWAYS

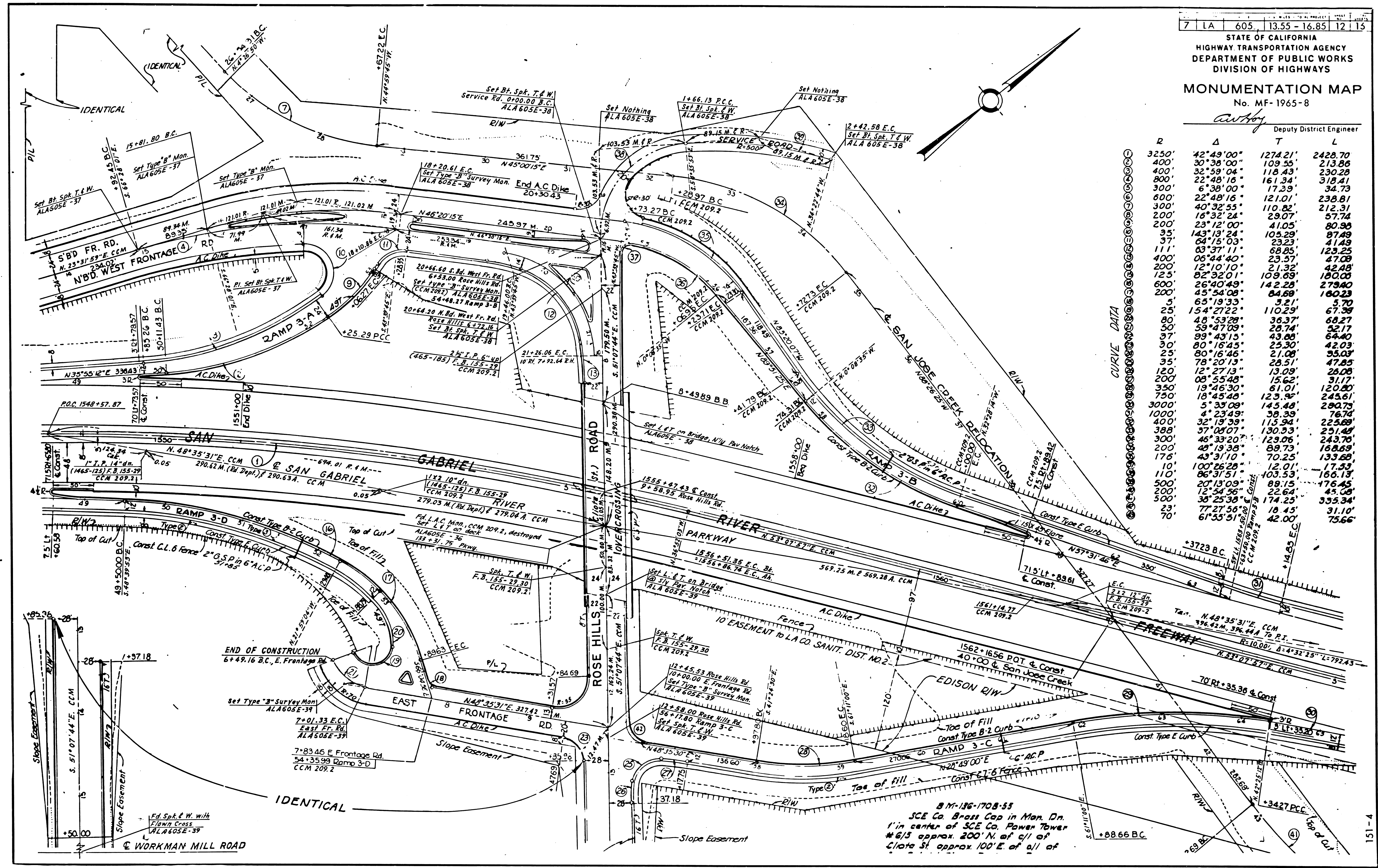
MONUMENTATION MAP
No. MF-1965-8

Anthony
Deputy District Engineer

R	Δ	T	L
3250'	42°49'00"	1274.21'	2428.70
400'	30°38'00"	109.55'	213.86
400'	32°59'04"	118.43'	230.28
800'	22°48'16"	161.34'	318.41
300'	6°38'00"	17.39'	34.73
600'	22°48'16"	121.01'	238.81
300'	40°32'55"	110.82'	212.31
200'	16°32'24"	29.07'	57.74
200'	23°12'00"	41.05'	80.98
35'	143°13'24"	105.29'	87.48
37'	64°15'03"	23.23'	41.48
111'	63°37'11"	68.85'	123.25
400'	06°44'40"	23.57'	47.08
200'	12°10'10"	21.32'	42.48
125'	82°32'01"	109.69'	180.00
600'	26°40'49"	142.25'	279.40
200'	45°54'08"	84.69'	160.23
5'	65°19'33"	3.21'	5.70
25'	154°27'22"	110.29'	67.98
80'	48°53'28"	36.37'	68.27
50'	59°47'03"	28.74'	52.17
97'	99°43'15"	43.88'	64.40
30'	80°16'45"	25.30'	42.03
25'	80°16'46"	21.08'	35.03
35'	78°20'13"	28.51'	47.85
120'	12°27'13"	13.09'	25.08
200'	08°55'48"	15.62'	31.17
350'	19°46'30"	61.01'	120.20
750'	18°45'48"	123.92'	243.61
3000'	5°33'09"	145.48'	290.75
1000'	4°23'49"	38.39'	76.74
400'	32°19'39"	115.94'	225.68
388'	37°08'07"	130.33'	251.48
300'	45°33'20"	128.06'	243.70
200'	48°19'28"	88.79'	168.68
176'	43°31'10"	70.25'	133.28
110'	100°26'28"	12.01'	17.59
500'	86°31'51"	103.53'	186.17
200'	20°13'09"	89.15'	176.45
500'	12°54'56"	22.64'	45.58
500'	38°25'38"	174.25'	355.34
23'	77°27'56"	18.45'	31.10
70'	61°55'51"	42.00'	75.66

CURVE DATA

151-4



B.M. 186-1708-55
SCE Co. Brass Cap in Man. Dr.
1' in center of SCE Co. Power Tower
#6/5 approx. 200' N. of c/l of
Clata St. approx. 100' E. of all of