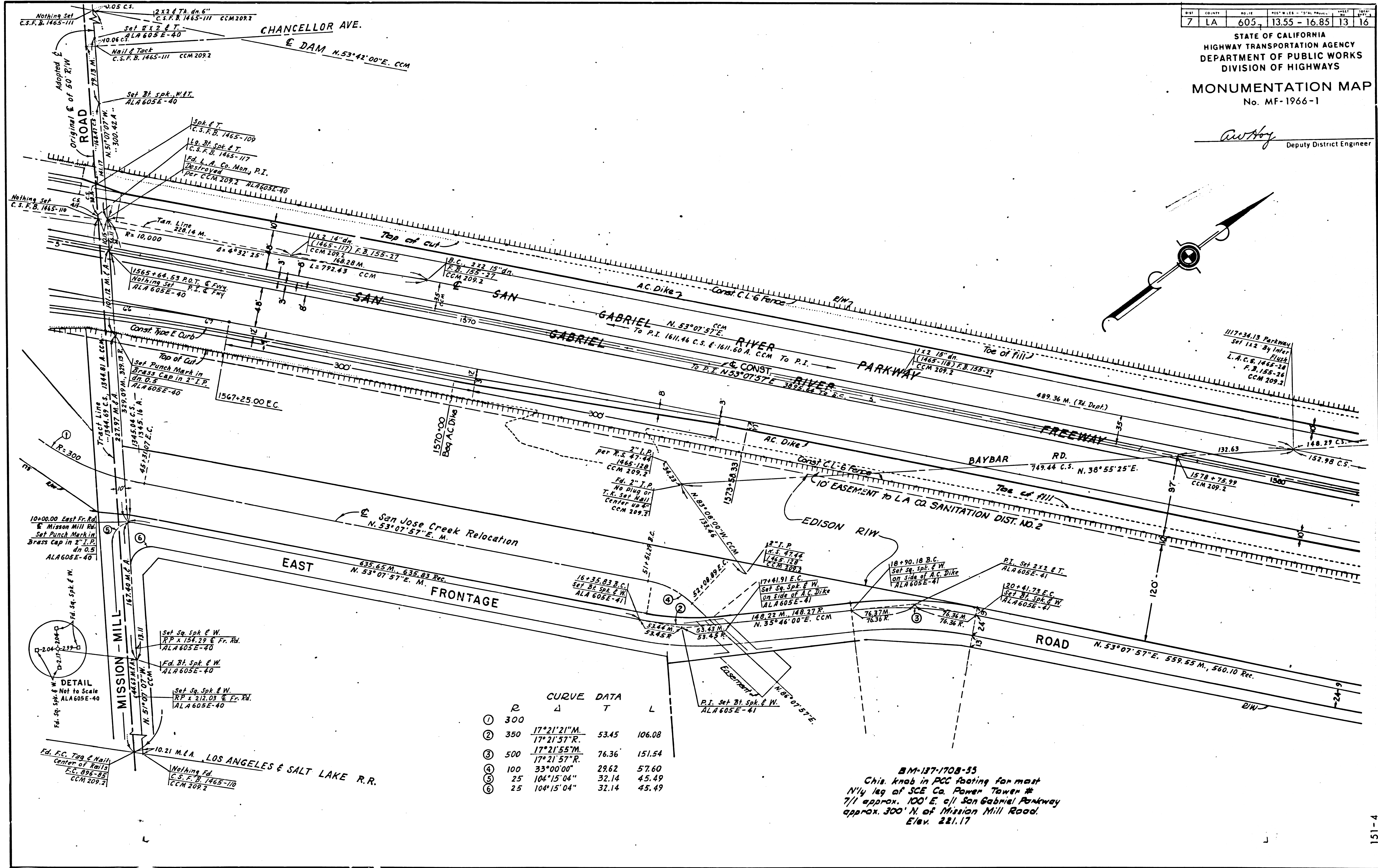
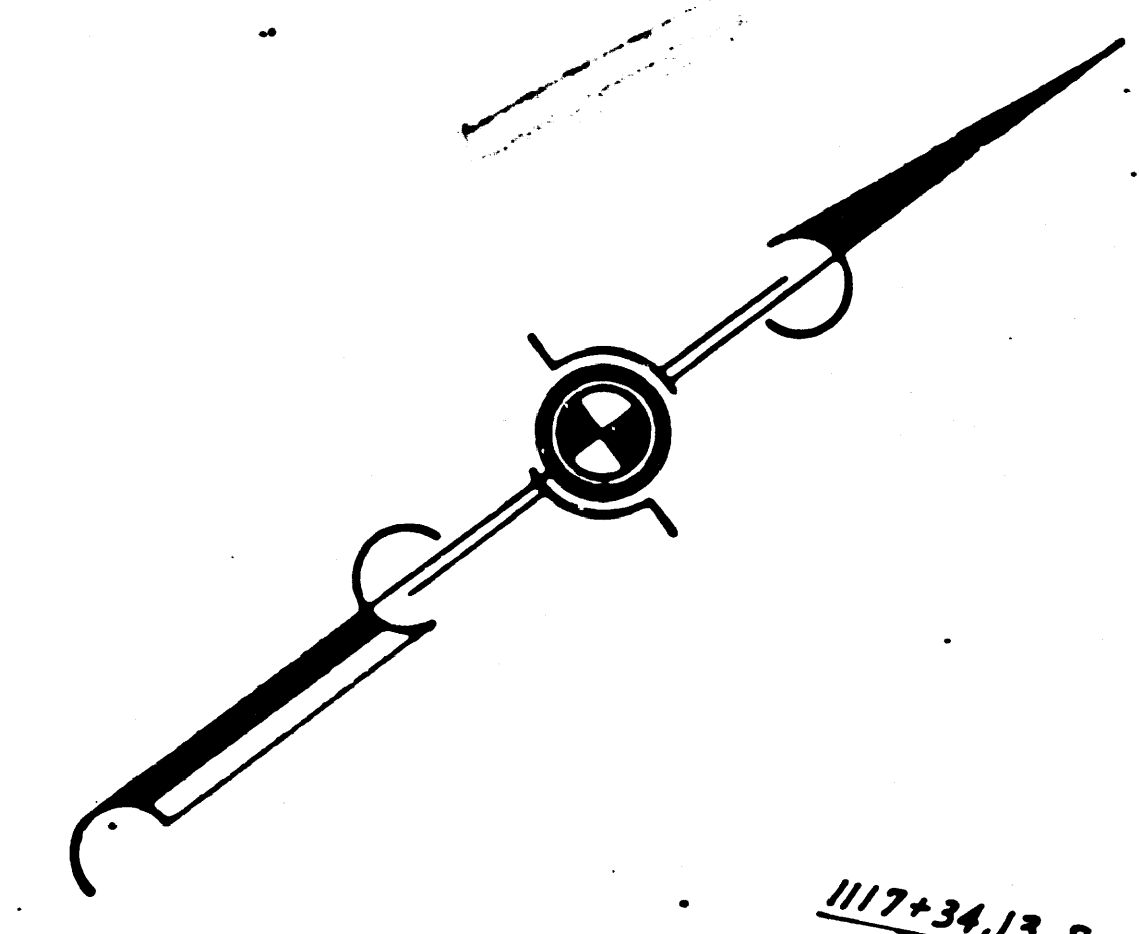


7	LA	605	13.55 - 16.85	13	16
---	----	-----	---------------	----	----

STATE OF CALIFORNIA
HIGHWAY TRANSPORTATION AGENCY
DEPARTMENT OF PUBLIC WORKS
DIVISION OF HIGHWAYS
MONUMENTATION MAP
No. MF-1966-1

Anthony
Deputy District Engineer



BM-17-1708-55
This knob in PCC footing for mast
N'y leg of SCE Co. Power Tower #
711 approx. 100' E. of San Gabriel Parkway
approx. 300' N. of Mission Mill Road.
Elev. 221.17

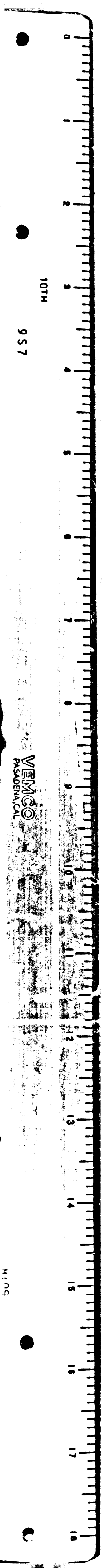
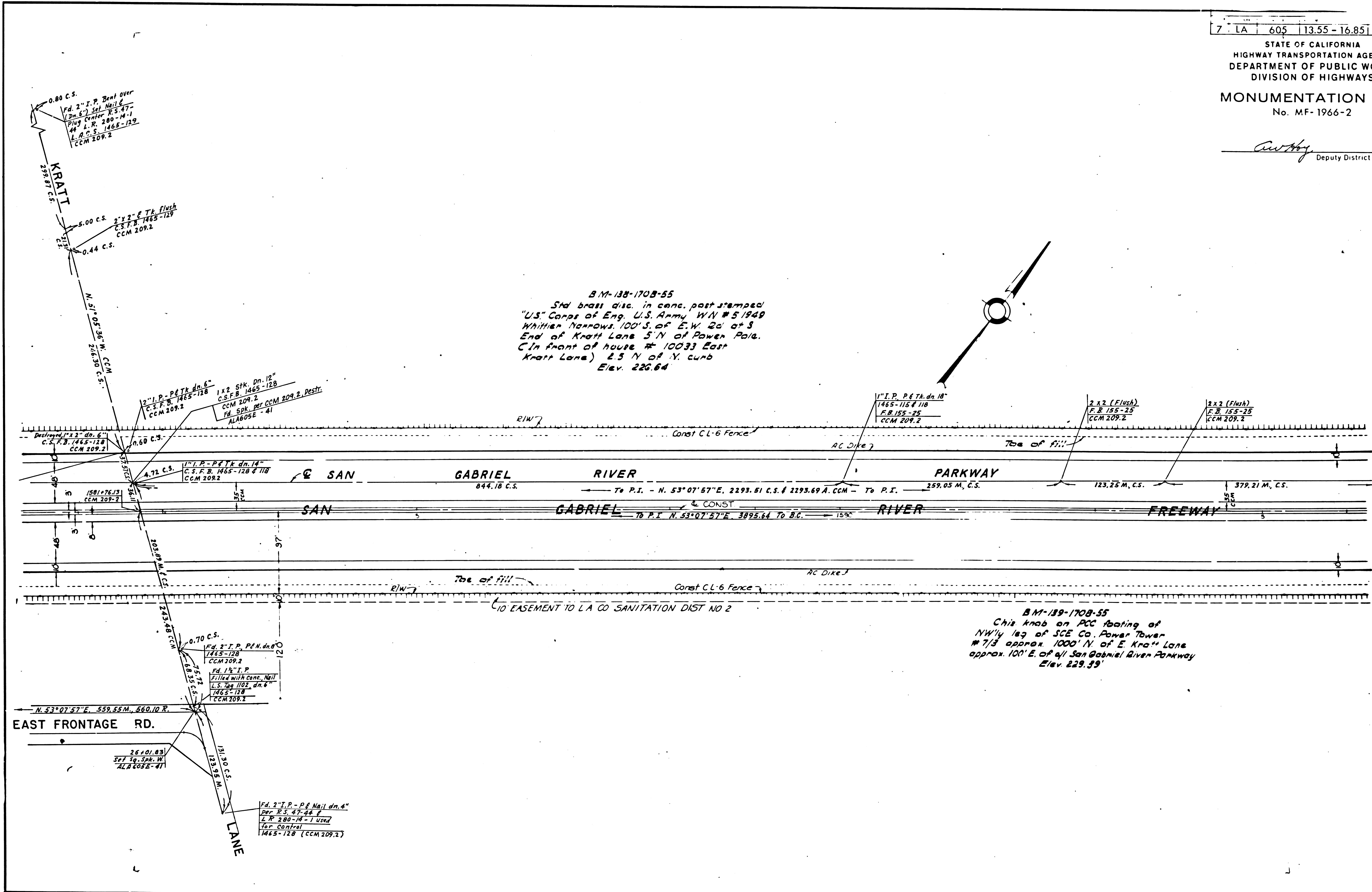
STATE OF CALIFORNIA
HIGHWAY TRANSPORTATION AGENCY
DEPARTMENT OF PUBLIC WORKS
DIVISION OF HIGHWAYS

MONUMENTATION MAP
No. MF-1966-2

Anthony
Deputy District Engineer

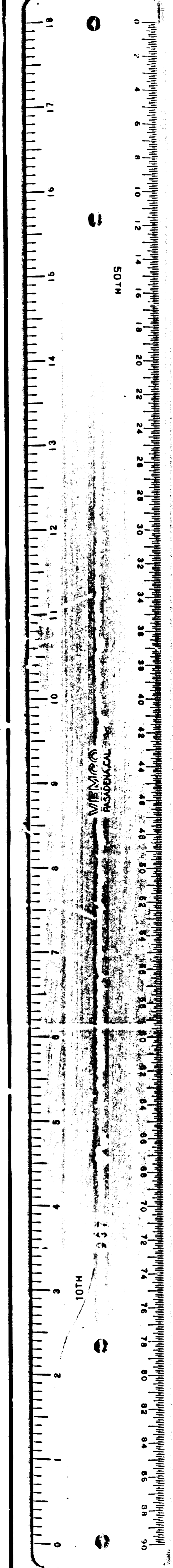
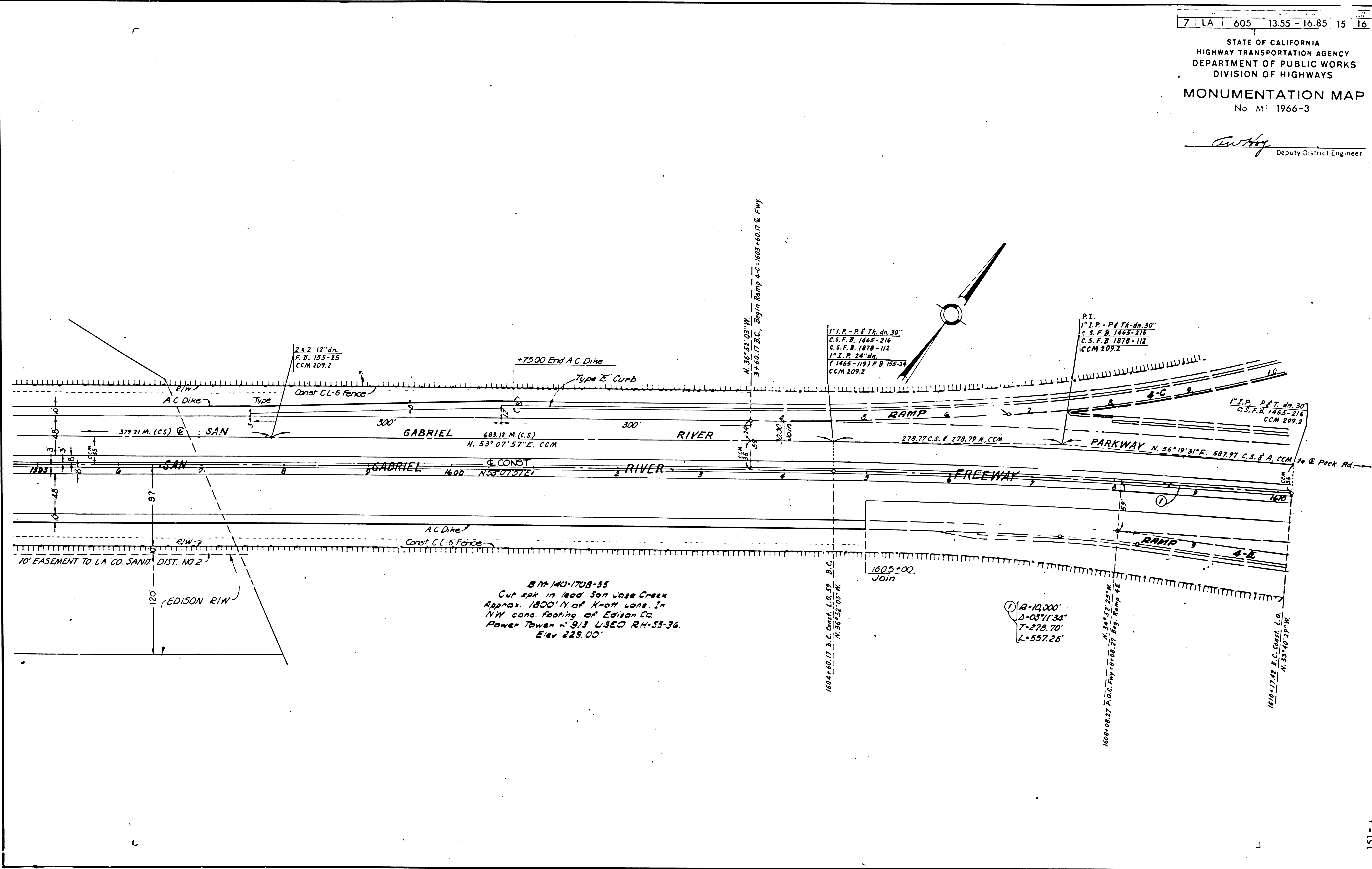
BM-138-170B-55
Std brass disc in conc. post stamped
"U.S. Corps of Eng. U.S. Army W/N # 51949
Whittier Narrows, 100' S. of E.W. 2d at S
End of Knott Lane S/N of Power Pole.
C in front of house # 10033 East
Knott Lane) 2.5 N of N. curb
Elev. 226.64

BM-139-170B-55
Chis knob on PCC footing of
NW 1/4 169 of SCE Co. Power Tower
7/3 approx. 1000' N. of E. Knott Lane
approx. 100' E. of all San Gabriel River Parkway
Elev. 229.39



STATE OF CALIFORNIA
HIGHWAY TRANSPORTATION AGENCY
DEPARTMENT OF PUBLIC WORKS
DIVISION OF HIGHWAYS
MONUMENTATION MAP
No. M: 1966-3

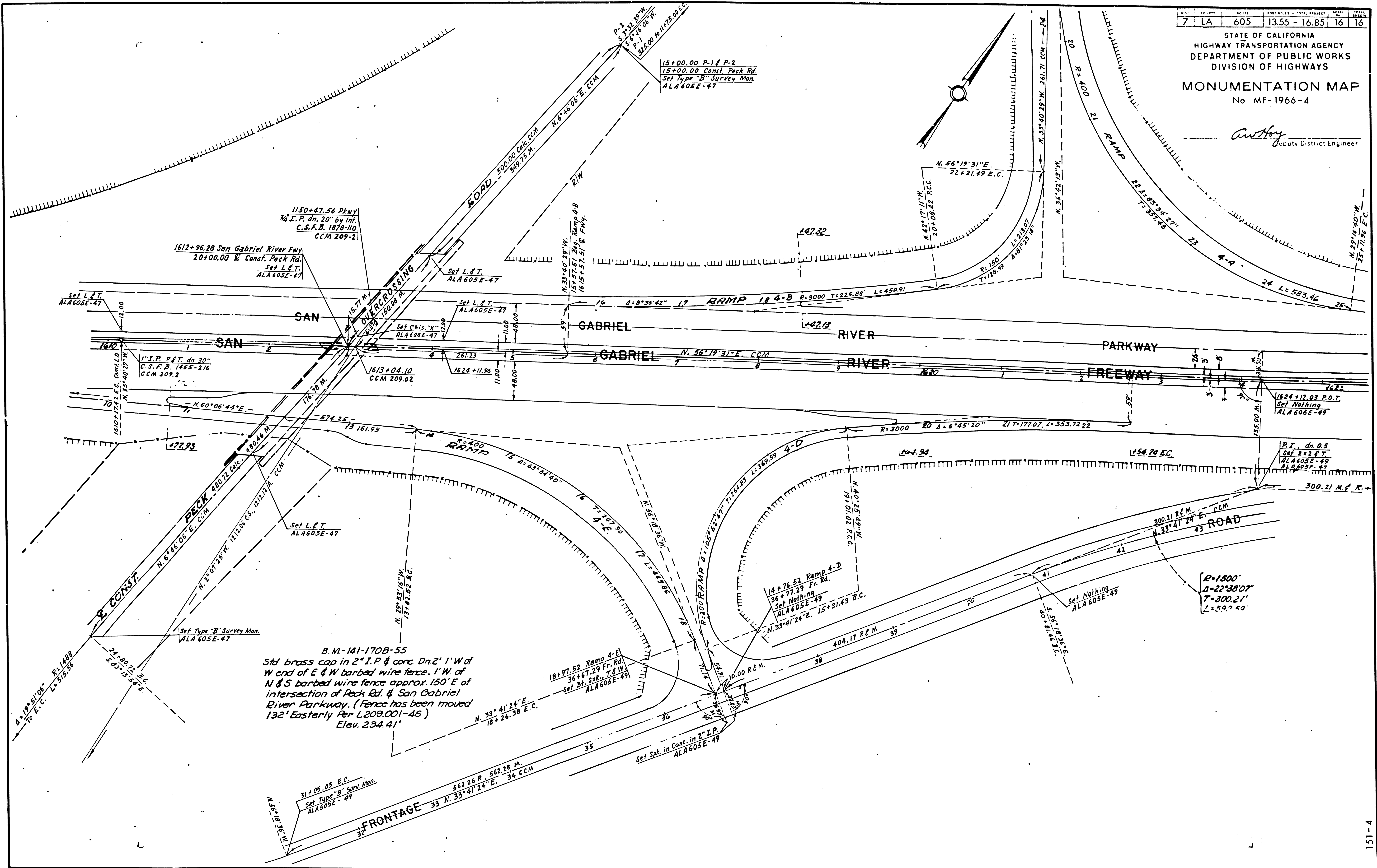
Anthony
Deputy District Engineer



7	LA	605	13.55 - 16.85	16	16
---	----	-----	---------------	----	----

STATE OF CALIFORNIA
 HIGHWAY TRANSPORTATION AGENCY
 DEPARTMENT OF PUBLIC WORKS
 DIVISION OF HIGHWAYS
MONUMENTATION MAP
 No MF-1966-4

Anthony
 Deputy District Engineer



B.M.-141-170B-55
 Std. brass cap in 2" I.P. & conc. Dn 2' 1" W of
 W end of E & W barbed wire fence, 1' W of
 N & S barbed wire fence approx. 150' E of
 intersection of Peck Rd. & San Gabriel
 River Parkway. (Fence has been moved
 132' Easterly Per L209.001-46)
 Elev. 234.41'