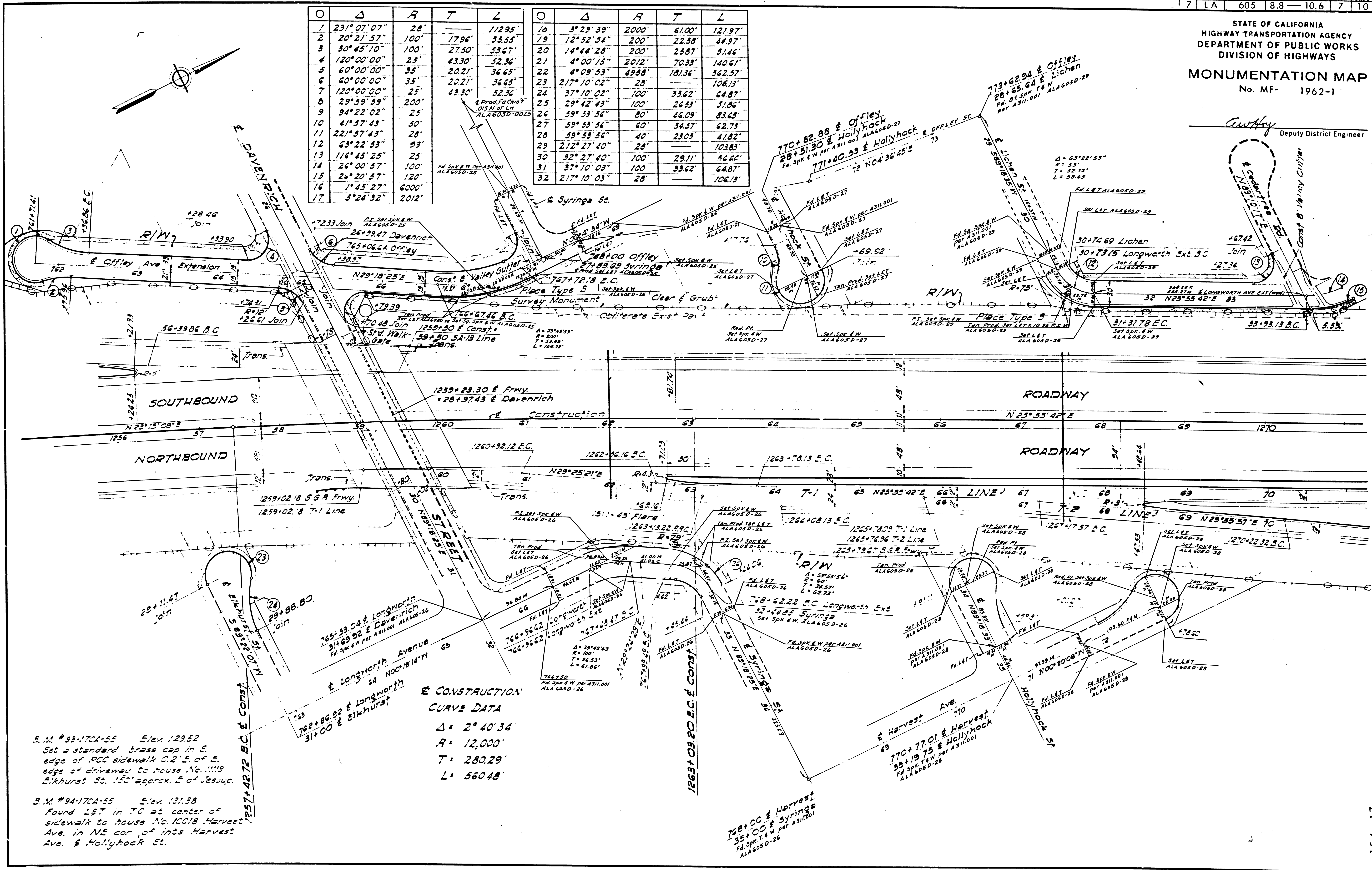


STATE OF CALIFORNIA
HIGHWAY TRANSPORTATION AGENCY
DEPARTMENT OF PUBLIC WORKS
DIVISION OF HIGHWAYS
MONUMENTATION MAP
No. MF- 1962-1

Cawthay
Deputy District Engineer

Station	Δ	R	T	L
1	231° 07' 07"	28'		11295'
2	20° 21' 57"	100'	1796'	3555'
3	30° 45' 10"	100'	2750'	5367'
4	120° 00' 00"	25'	4330'	5236'
5	60° 00' 00"	35'	2021'	3665'
6	60° 00' 00"	35'	2021'	3665'
7	120° 00' 00"	25'	4330'	5236'
8	29° 59' 59"	200'		
9	94° 22' 02"	25'		
10	41° 57' 43"	50'		
11	221° 57' 43"	28'		
12	63° 22' 53"	53'		
13	116° 45' 25"	25'		
14	26° 00' 57"	100'		
15	1° 45' 27"	6000'		
16	5° 24' 32"	2012'		
17				

Station	Δ	R	T	L
18	3° 29' 39"	2000'	6100'	12197'
19	12° 52' 34"	200'	2258'	4497'
20	14° 44' 28"	200'	2587'	5146'
21	4° 00' 15"	2012'	7033'	14061'
22	4° 09' 53"	4988'	18136'	36257'
23	217° 10' 02"	28'		106.13'
24	37° 10' 02"	100'	33.62'	64.87'
25	29° 42' 43"	100'	26.33'	51.86'
26	59° 53' 56"	80'	46.09'	83.65'
27	59° 53' 56"	60'	34.57'	62.75'
28	59° 53' 56"	40'	23.05'	41.82'
29	212° 27' 40"	28'		103.83'
30	32° 27' 40"	100'	29.11'	56.64'
31	57° 10' 03"	100'	33.62'	64.87'
32	217° 10' 03"	28'		106.13'



S.M. #93-1704-55 Elev. 128.52
Set a standard brass cap in S. edge of PCC sidewalk 0.2' E. of E. edge of driveway to house No. 1119 Eikhurst St. 150' approx. E of 2852c.

S.M. #94-1704-55 Elev. 131.58
Found L&T in TC at center of sidewalk to house No. 10018 Harvest Ave. in NE cor. of int's. Harvest Ave. & Hollyhook St.

CONSTRUCTION CURVE DATA
Δ = 2° 40' 34"
R = 12,000'
T = 280.29'
L = 560.48'

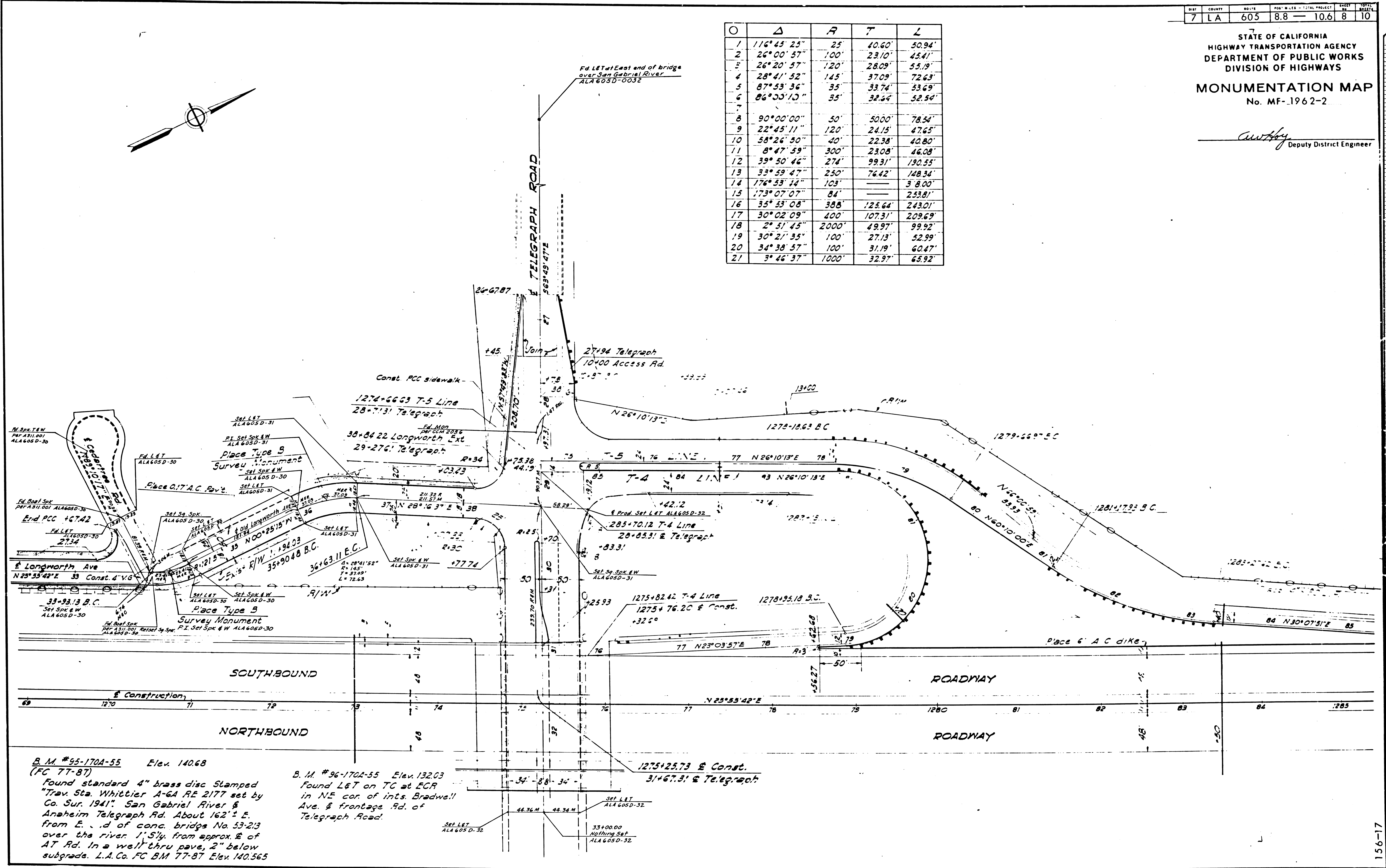
156-17

7	LA	605	8.8	10.6	8	10
---	----	-----	-----	------	---	----

STATE OF CALIFORNIA
HIGHWAY TRANSPORTATION AGENCY
DEPARTMENT OF PUBLIC WORKS
DIVISION OF HIGHWAYS
MONUMENTATION MAP
No. MF-1962-2

C. W. H. H. H.
Deputy District Engineer

O	Δ	R	T	L
1	116°45'25"	25'	40.60'	50.94'
2	26°00'57"	100'	23.10'	45.41'
3	26°20'57"	120'	28.09'	55.19'
4	28°41'52"	145'	37.09'	72.63'
5	87°53'36"	35'	33.74'	33.69'
6	86°33'10"	35'	32.34'	52.54'
7				
8	90°00'00"	50'	50.00'	78.54'
9	22°45'11"	120'	24.15'	47.65'
10	58°26'50"	40'	22.38'	40.80'
11	8°47'59"	300'	23.08'	46.08'
12	39°50'46"	274'	99.31'	190.55'
13	33°59'47"	250'	76.42'	148.34'
14	176°53'14"	103'		3'8.00'
15	173°07'07"	84'		253.81'
16	55°53'08"	388'	125.64'	243.01'
17	30°02'09"	400'	107.31'	209.69'
18	2°51'45"	2000'	49.97'	99.92'
19	30°21'35"	100'	27.13'	52.99'
20	34°38'57"	100'	31.19'	60.47'
21	3°46'37"	1000'	32.97'	65.92'



B.M. #95-170A-55 Elev. 140.68
(FC 77-87)
Found standard 4" brass disc Stamped
"Trav. Sta. Whittier A-64 RE 2177 set by
Co. Sur. 1941". San Gabriel River &
Anaheim Telegraph Rd. About 162' E.
from E. end of conc. bridge No. 53-213
over the river 1' 5" from approx. E. of
AT Rd. In a well thru pave, 2" below
subgrade. L.A. Co. FC BM 77-87 Elev. 140.565

B.M. #96-170A-55 Elev. 132.03
Found L&T on TC at ECR
in NE cor. of ints. Bradwell
Ave. & frontage Rd. of
Telegraph Road.

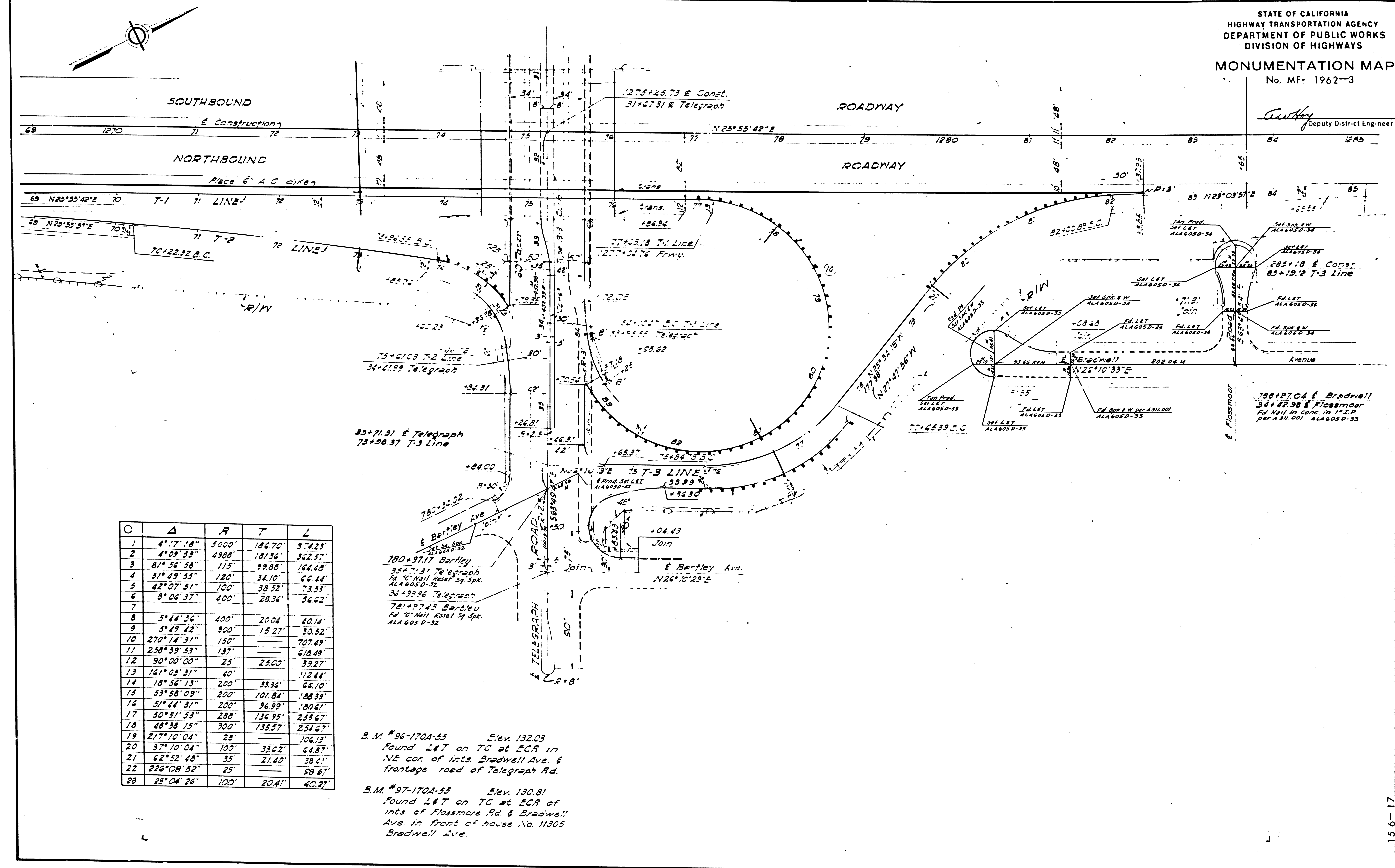
1275+25.73 & Const.
31+67.31 & Telegraph

DATE	COUNTY	NO. IN	POST MILES - TOTAL PROJECT	SHEET	TOTAL SHEETS
7	LA	605	8.8 - 10.6	9	10

STATE OF CALIFORNIA
HIGHWAY TRANSPORTATION AGENCY
DEPARTMENT OF PUBLIC WORKS
DIVISION OF HIGHWAYS

MONUMENTATION MAP
No. MF- 1962-3

Century
Deputy District Engineer



C	Δ	R	T	L
1	4°17'18"	5000'	186.70'	374.23'
2	4°09'53"	4988'	181.36'	362.57'
3	81°56'38"	115'	99.88'	164.48'
4	31°49'53"	120'	34.10'	66.44'
5	42°07'51"	100'	38.52'	73.53'
6	8°06'37"	400'	28.36'	56.62'
7				
8	5°44'36"	400'	20.04'	40.14'
9	5°49'42"	500'	15.27'	30.52'
10	270°14'31"	150'		707.49'
11	258°39'53"	137'		618.49'
12	90°00'00"	25'	23.60'	39.27'
13	161°03'31"	40'		112.44'
14	18°56'13"	200'	33.36'	66.10'
15	53°58'09"	200'	101.84'	188.39'
16	51°44'31"	200'	96.99'	180.61'
17	50°51'53"	288'	136.95'	255.67'
18	48°38'15"	300'	135.57'	254.67'
19	217°10'04"	28'		106.13'
20	37°10'04"	100'	33.62'	64.87'
21	62°52'48"	35'	21.40'	38.21'
22	226°08'52"	25'		58.67'
23	23°04'26"	100'	20.41'	40.27'

S.M. #96-170A-55 Elev. 132.03
Found L&T on TC at ECR in
NE cor. of ints. Bradwell Ave &
frontage road of Telegraph Rd.

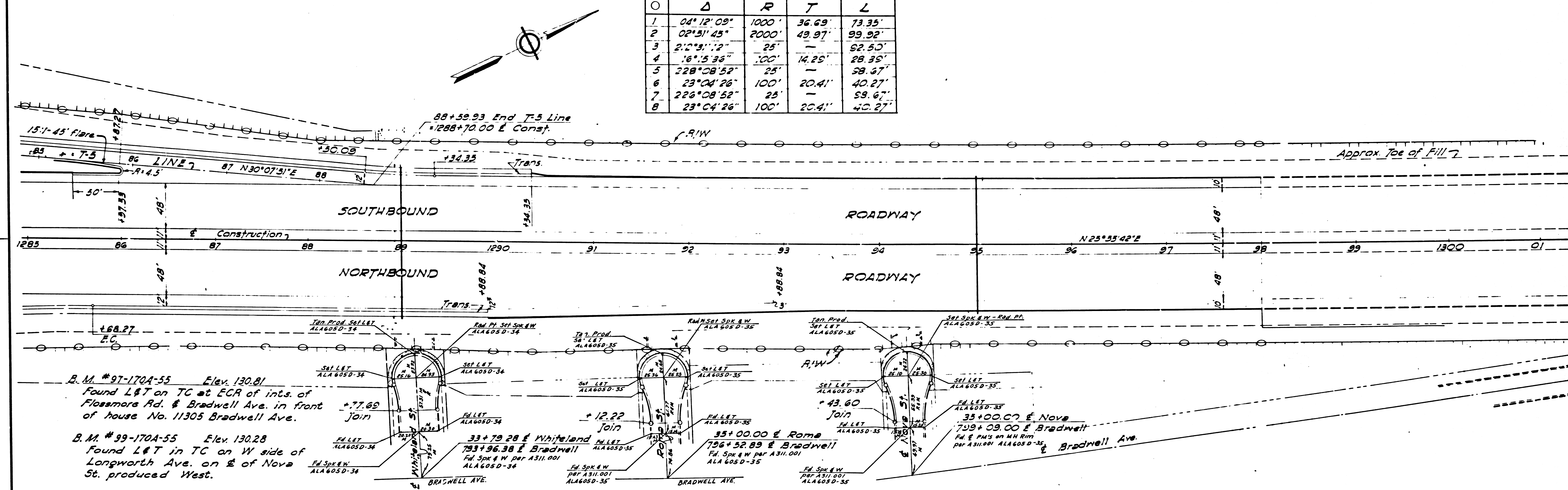
S.M. #97-170A-55 Elev. 130.81
Found L&T on TC at ECR of
ints. of Flossmore Rd. & Bradwell
Ave. in front of house No. 11305
Bradwell Ave.

156-17

STATE OF CALIFORNIA
HIGHWAY TRANSPORTATION AGENCY
DEPARTMENT OF PUBLIC WORKS
DIVISION OF HIGHWAYS
MONUMENTATION MAP
No. MF- 1962-4

Cutler
Deputy District Engineer

Δ	R	T	L
1 04° 12' 09"	1000'	36.69'	73.35'
2 02° 51' 45"	2000'	49.97'	99.92'
3 21° 23' 12"	25'	-	92.50'
4 16° 15' 36"	100'	14.25'	28.35'
5 228° 08' 52"	25'	-	28.37'
6 23° 04' 26"	100'	20.41'	40.27'
7 226° 08' 52"	25'	-	28.37'
8 23° 04' 26"	100'	20.41'	40.27'



B.M. #97-170A-55 Elev. 130.81
Found L&T on TC at ECR of ints. of
Florence Rd. & Bradwell Ave. in front
of house No. 11305 Bradwell Ave.

B.M. #99-170A-55 Elev. 130.28
Found L&T in TC on W side of
Longworth Ave. on E of Nova
St. produced West.

