

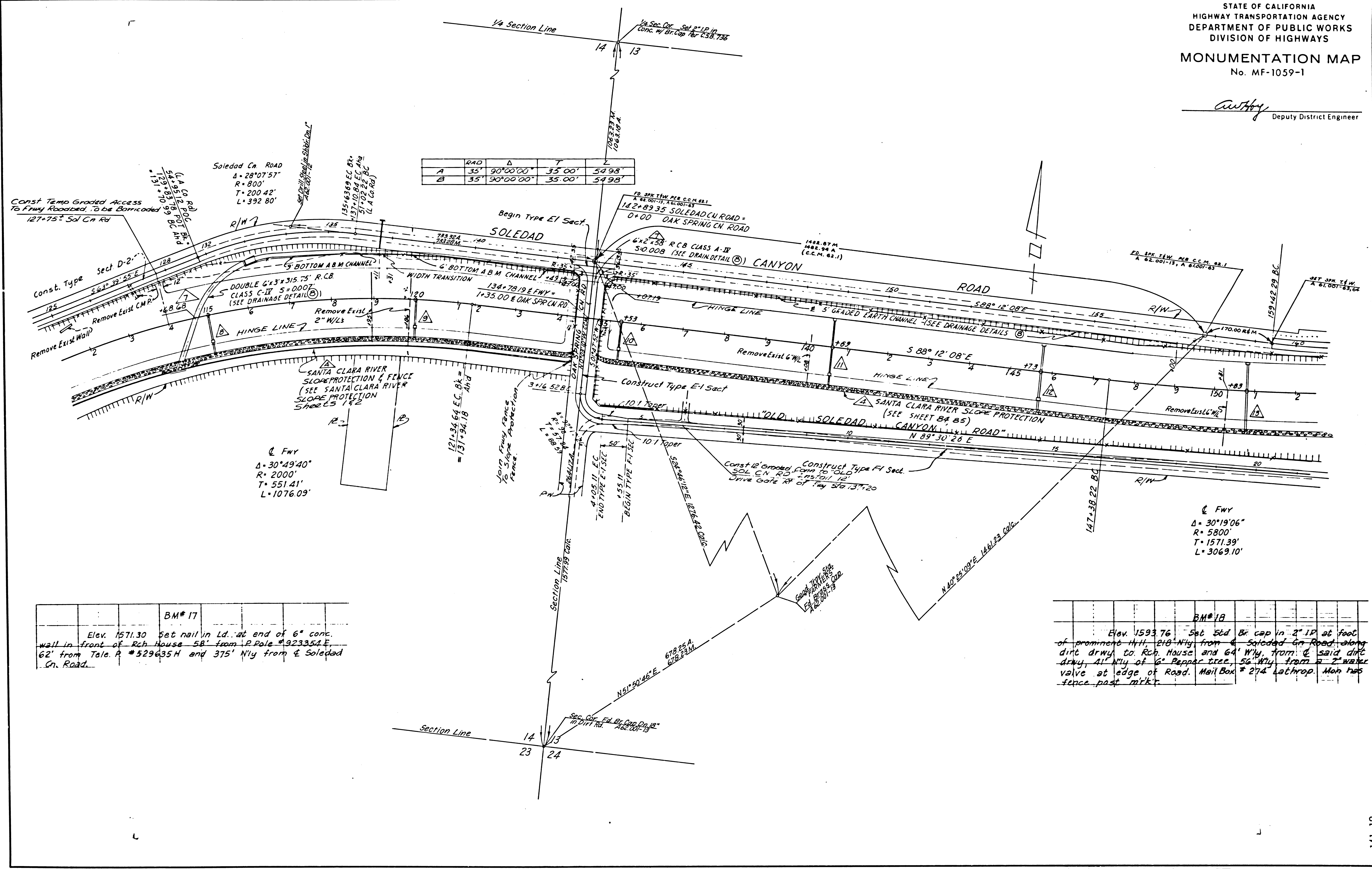
STATE OF CALIFORNIA
HIGHWAY TRANSPORTATION AGENCY
DEPARTMENT OF PUBLIC WORKS
DIVISION OF HIGHWAYS

MONUMENTATION MAP

No. MF-1059-1

Anthony
Deputy District Engineer

	RAD	Δ	T	L
A	35'	90°00'00"	35'00"	54'98"
B	35'	90°00'00"	35'00"	54'98"



BM#17
Elev. 1571.30 Set nail in Ld. at end of 6" conc. wall in front of Rch. House 58' from P. Pole #923354 E. 62' from Tele. P. #529635H and 375' Nly from E Soledad Cn. Road.

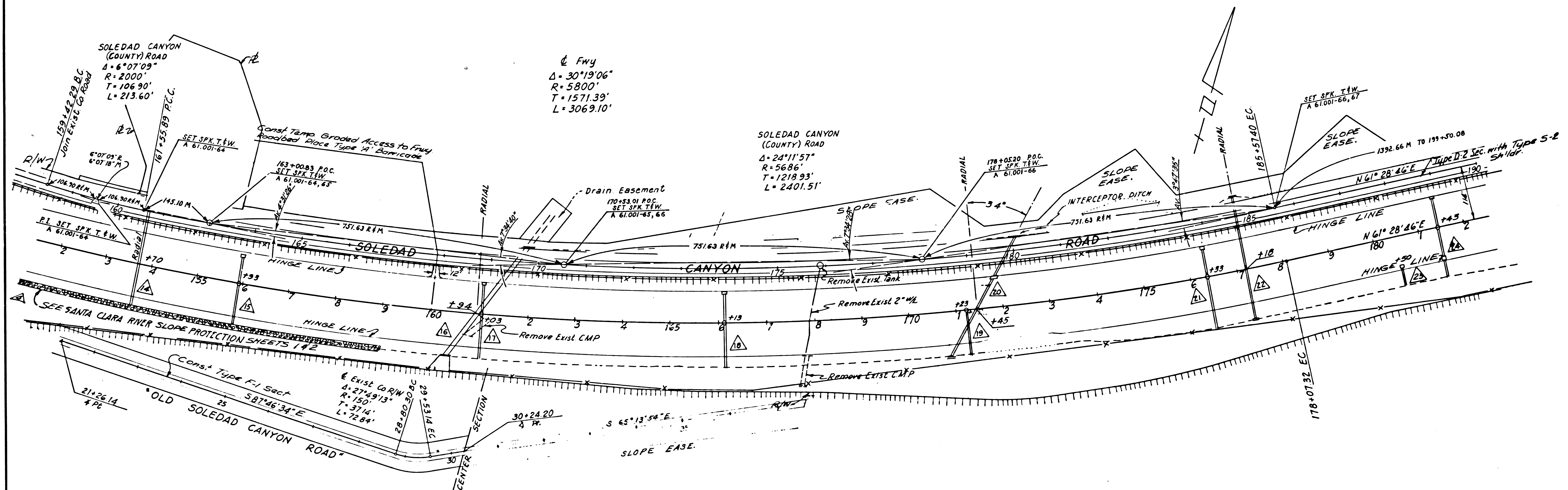
BM#18
Elev. 1593.76 Set 5/8" dia. cap in 2" IP at foot of prominent H.H. 210' Nly from E Soledad Cn Road along dirt drwy. to Rch. House and 64' Wly from E said dirt drwy. 11' Nly of 6" Pepper tree, 56' Wly from a 2" water valve at edge of Road. Mail Box #274 Lathrop. Man has fence past mkt.

DATE	CONTRACT	NO. 14	PROJECT	33.94-39.85	SHEET	TOTAL SHEETS
7	LA	14			2	8

STATE OF CALIFORNIA
HIGHWAY TRANSPORTATION AGENCY
DEPARTMENT OF PUBLIC WORKS
DIVISION OF HIGHWAYS

MONUMENTATION MAP
No. MF-1059-2

Anthony
Deputy District Engineer

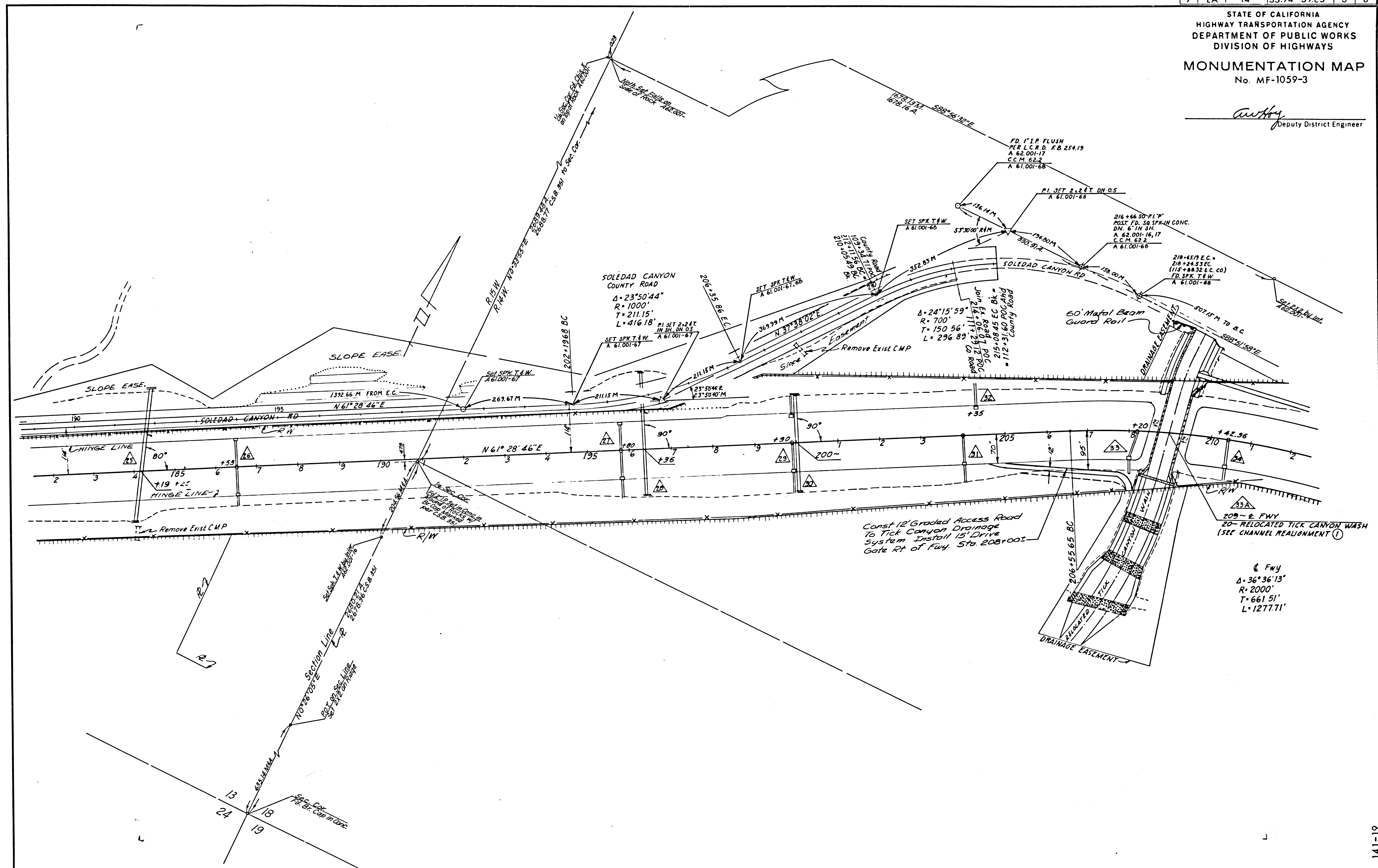


141-19

DIST.	COUNTY	NO. IN	POST MILES - TOTAL PROJECT	SHEET	TOTAL SHEETS
7	LA	14	33.94-39.25	3	8

STATE OF CALIFORNIA
HIGHWAY TRANSPORTATION AGENCY
DEPARTMENT OF PUBLIC WORKS
DIVISION OF HIGHWAYS
MONUMENTATION MAP
No. MF-1059-3

Autby
Deputy District Engineer



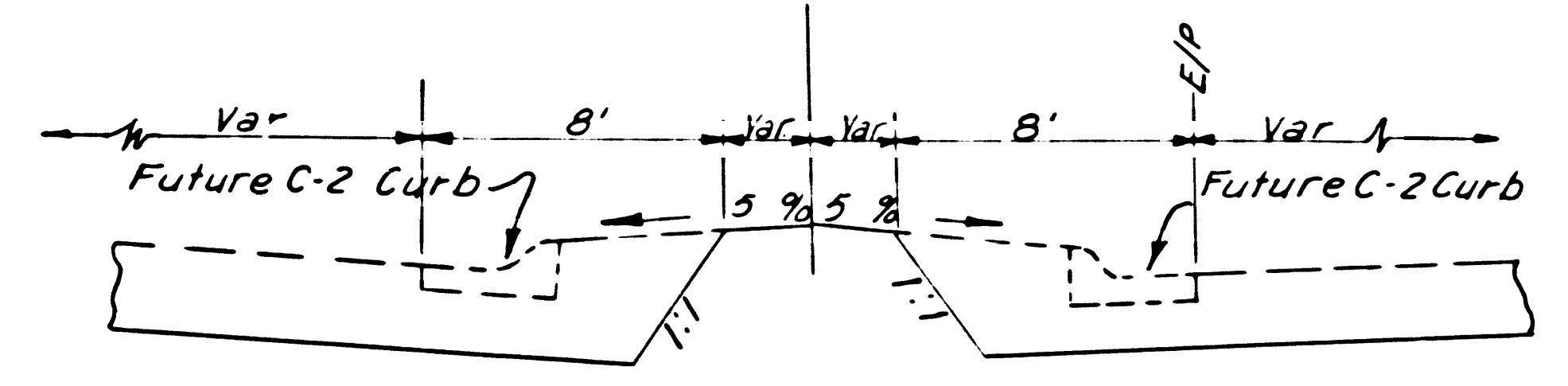
9 5 7

9 5 7

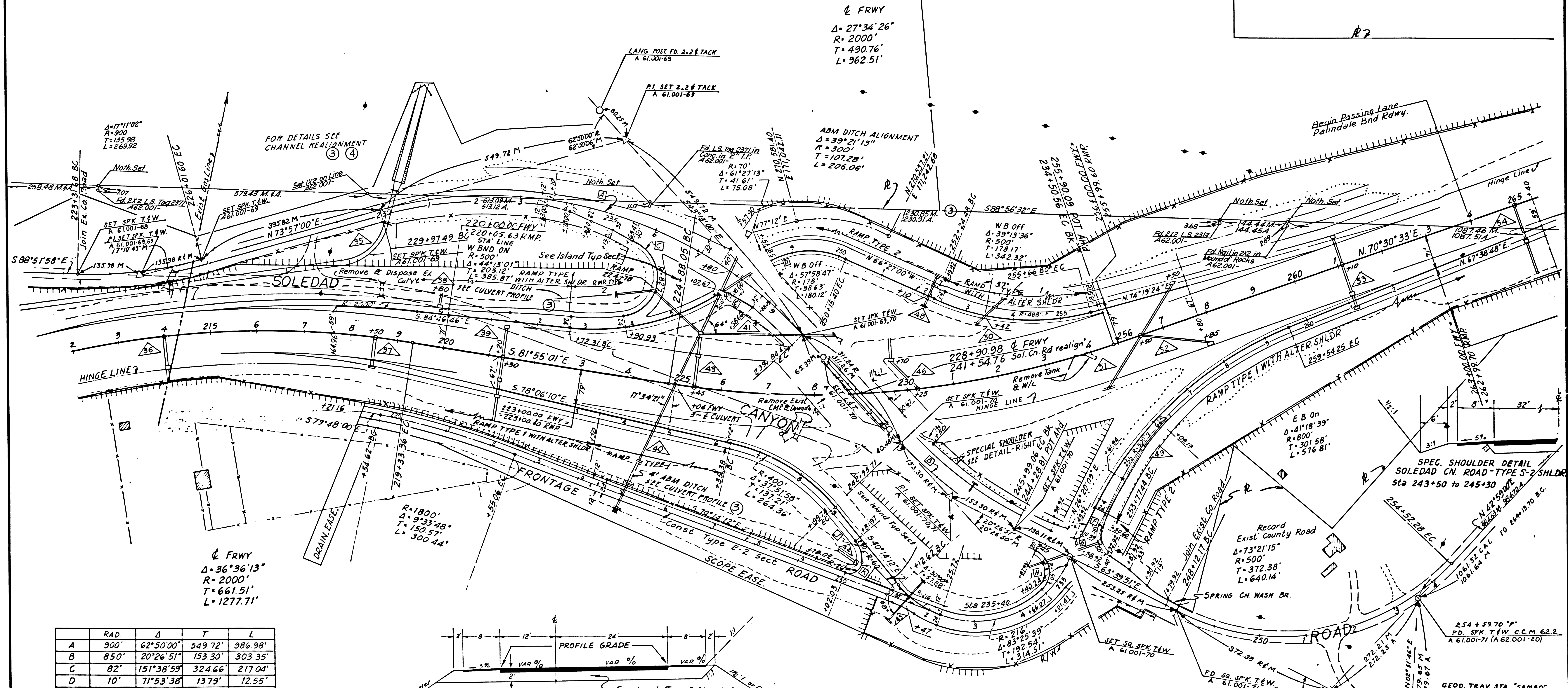
STATE OF CALIFORNIA
HIGHWAY TRANSPORTATION AGENCY
DEPARTMENT OF PUBLIC WORKS
DIVISION OF HIGHWAYS

MONUMENTATION MAP
No. MF-1059-4

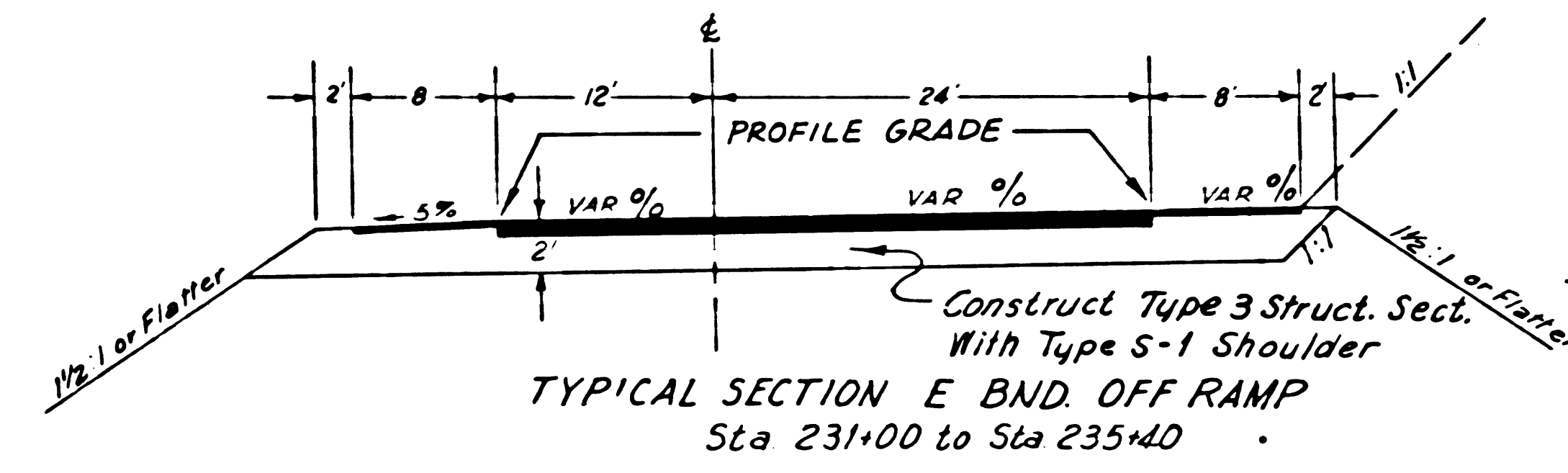
Anthony
Deputy District Engineer



TYPICAL RAMP ISLAND



	RAD	Δ	T	L
A	900'	62°50'00"	549.72'	986.98'
B	850'	20°26'51"	153.30'	303.35'
C	82'	151°38'59"	324.66'	217.04'
D	10'	71°53'38"	13.79'	12.55'
E	20'	68°13'35"	13.55'	23.82'
F	50'	90°00'00"	50.00'	78.54'
G	10'	90°00'00"	10.00'	15.71'
H	50'	109°40'24"	70.98'	95.71'
I	50'	79°42'05"	41.73'	69.55'
J	60'	49°40'55"	27.78'	52.03'
K	26'	100°19'05"	31.16'	45.52'



TYPICAL SECTION E BND OFF RAMP
Sta 231+00 to Sta 235+40

NOTE:
Place Type 'A' Barricade on all Graded Ramps at County Road.
Soledad Canyon Road Construct Type A-2 Section with Curbed Median as shown with Type S-2 Shldr. in full section.