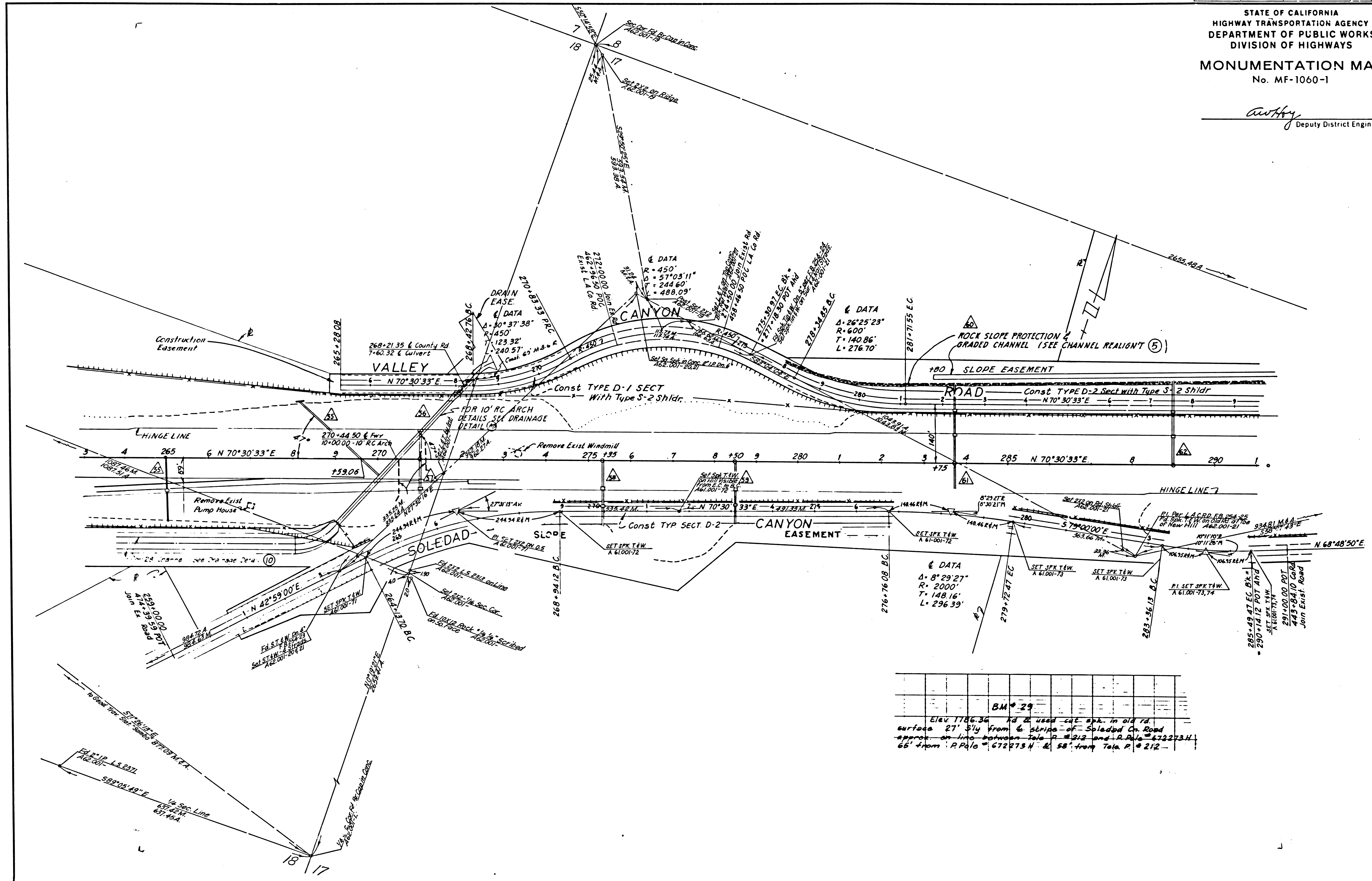


STATE OF CALIFORNIA
HIGHWAY TRANSPORTATION AGENCY
DEPARTMENT OF PUBLIC WORKS
DIVISION OF HIGHWAYS
MONUMENTATION MAP
No. MF-1060-1

Anthony
Deputy District Engineer

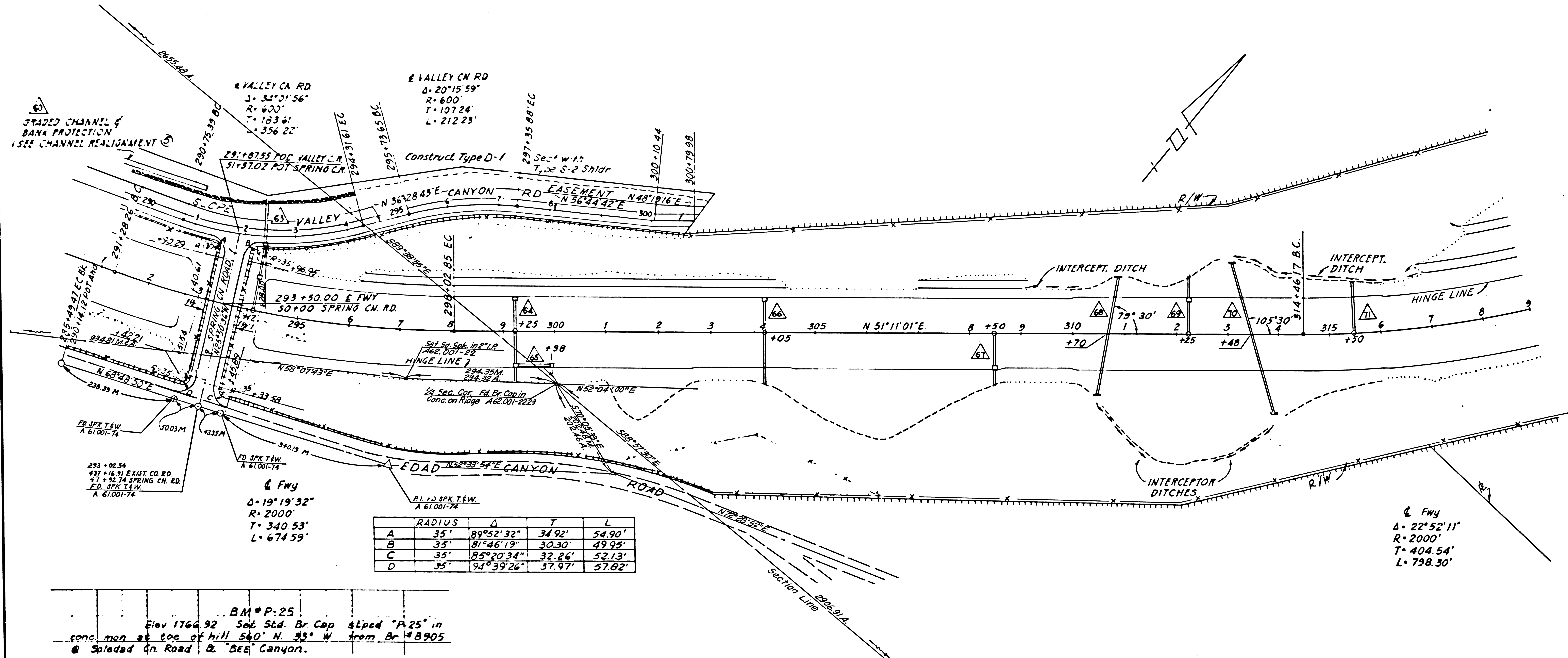


BM # 29	
Elev. 1186.36	hd & used chg. sph. in old rd.
surface 27' Sly from E stripe of Soledad Co. Road	
approx. on line between Tola P. # 212 and P. Pole # 672273 N	
65' from P. Pole # 672273 N & 58' from Tola P. # 212	

DIST	COUNTY	ROUTE	POST MILES - TOTAL PROJECT	SHEET NO.	TOTAL SHEETS
7	LA	14	33.94-39.85	6	8

STATE OF CALIFORNIA
HIGHWAY TRANSPORTATION AGENCY
DEPARTMENT OF PUBLIC WORKS
DIVISION OF HIGHWAYS
MONUMENTATION MAP
No. MF-1060-2

Anthony
Deputy District Engineer



RADIUS	Δ	T	L
A 35'	89° 52' 32"	34.92'	54.90'
B 35'	81° 46' 19"	30.30'	49.95'
C 35'	85° 20' 34"	32.26'	52.13'
D 35'	94° 39' 26"	37.97'	57.82'

BM # P-25
Elev 1766.92 Set Std. Br. Cap. tipped "P-25" in
conc. man. at toe of hill 540' N. 33° W. from Br. # B905
@ Spleaded Qn. Road & "SEE" Canyon.

141-19