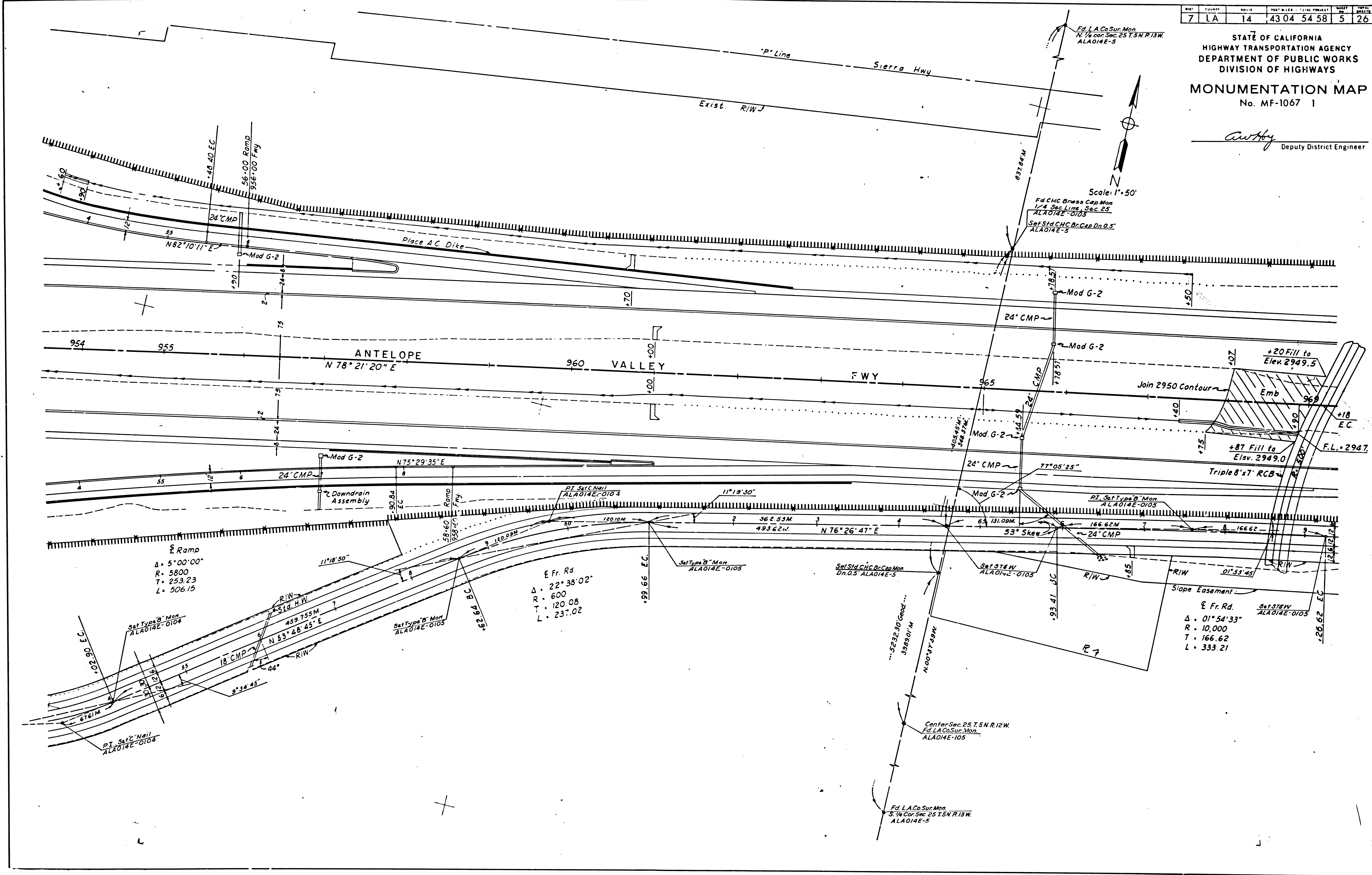
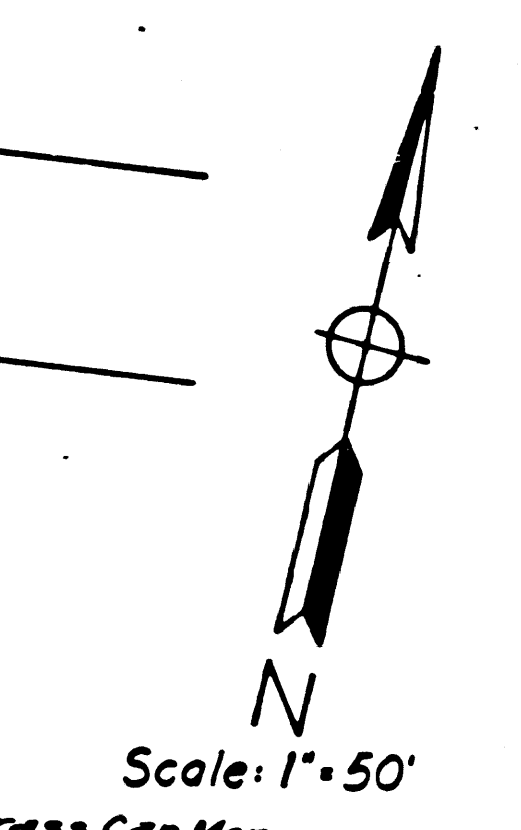


SHEET NO.	COUNTY	ROUTE	POST MILES	PROJECT	SHEET	TOTAL SHEETS
7	LA	14	43.04	54.58	5	26

STATE OF CALIFORNIA  
HIGHWAY TRANSPORTATION AGENCY  
DEPARTMENT OF PUBLIC WORKS  
DIVISION OF HIGHWAYS  
**MONUMENTATION MAP**  
No. MF-1067 1

*Anthony*  
Deputy District Engineer



POST MILES - TOTAL PROJECT	SHEET NO.	TOTAL SHEETS
7 14 43.04 54.58	6	26

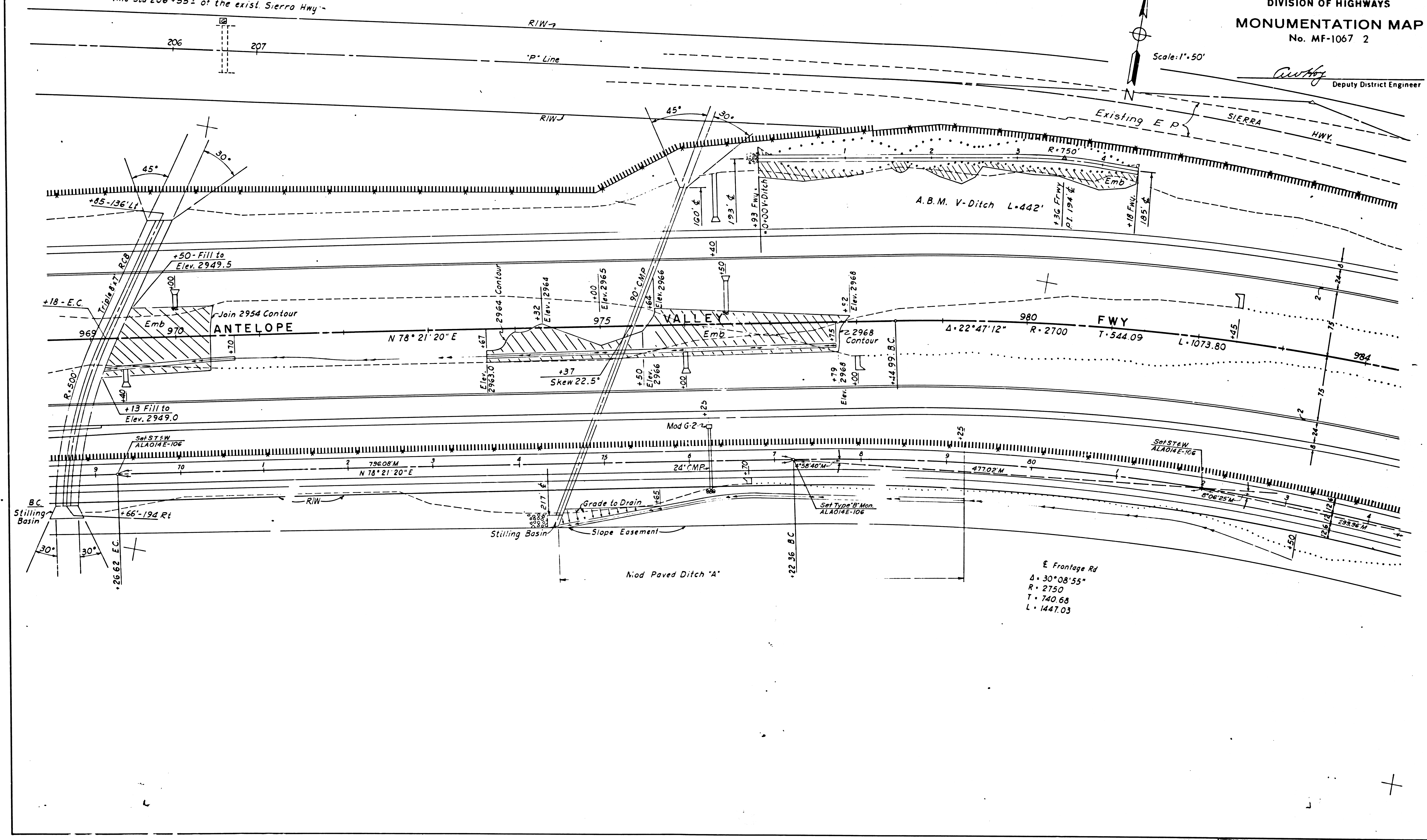
STATE OF CALIFORNIA  
HIGHWAY TRANSPORTATION AGENCY  
DEPARTMENT OF PUBLIC WORKS  
DIVISION OF HIGHWAYS  
**MONUMENTATION MAP**  
No. MF-1067 2

*Anthony*  
Deputy District Engineer

NOTE: FOR R/W INFORMATION  
NOT SHOWN. SEE R/W MAPS  
IN FILE IN DISTRICT OFFICE.

Scale: 1" = 50'

Install a Type "B" crest-gage approx.  
6' upstream & offset approx. 3' from E  
of the exist. 6x6' RCB located at "P"  
line Sta 206+55± of the exist. Sierra Hwy.



E Frontage Rd  
 $\Delta = 30^\circ 08' 55''$   
R = 2750  
T = 740.68  
L = 1447.03

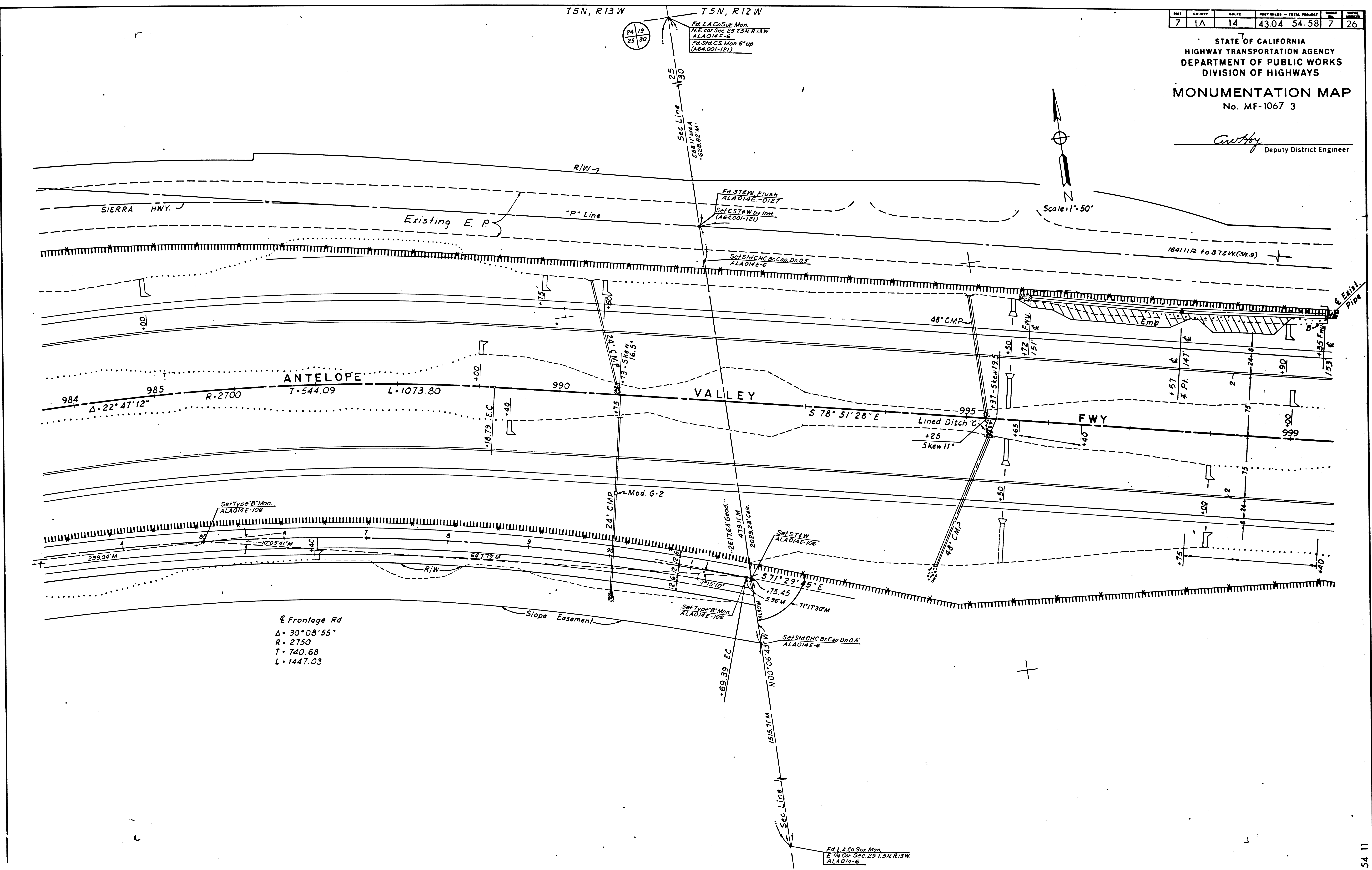
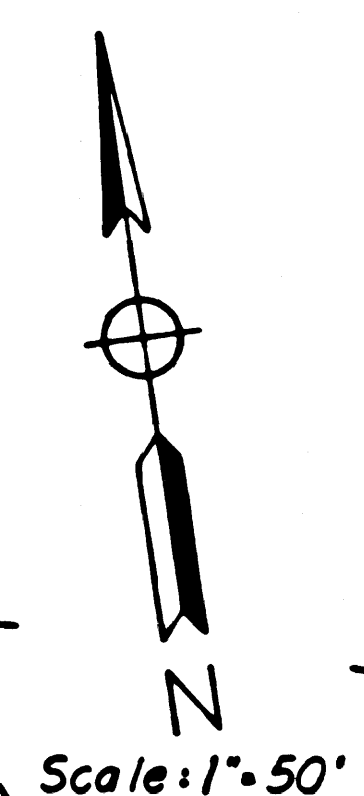
F.M. 20874 | SHT. 2

154 11

BLK	COUNTY	ROUTE	POST MILES - TOTAL PROJECT	SHEET	TOTAL SHEETS
7	LA	14	43.04 54.58	7	26

STATE OF CALIFORNIA  
HIGHWAY TRANSPORTATION AGENCY  
DEPARTMENT OF PUBLIC WORKS  
DIVISION OF HIGHWAYS  
**MONUMENTATION MAP**  
No. MF-1067 3

*C. W. H. H.*  
Deputy District Engineer



Frontage Rd  
 $\Delta = 30^{\circ}08'55''$   
 $R = 2750$   
 $T = 740.68$   
 $L = 1447.03$

Fd. L.A. Co. Sur. Mon.  
E. 1/4 Cor. Sec. 25 T5N, R13W  
ALA014-6

F.M. 20874 SHT. 3

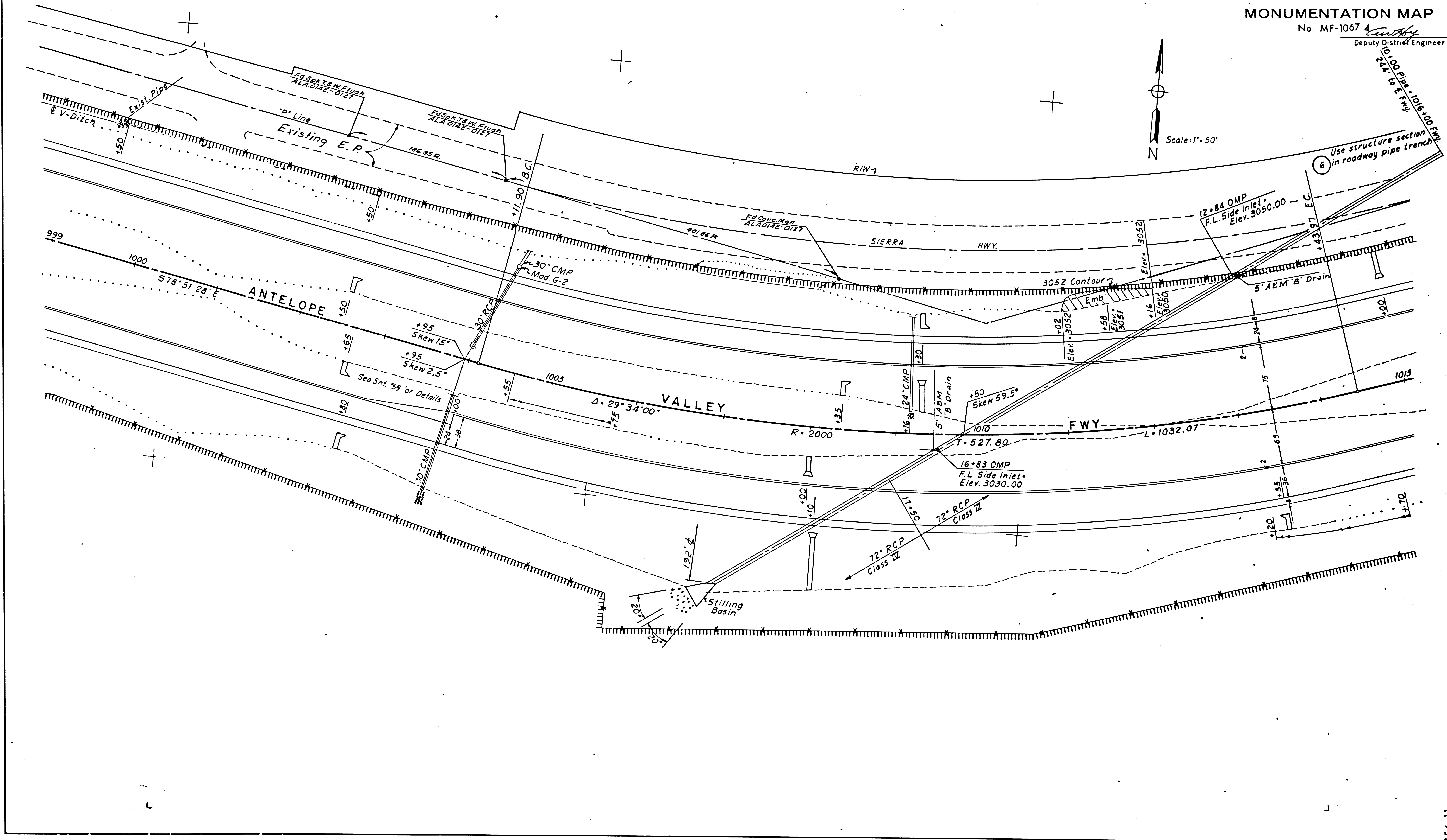
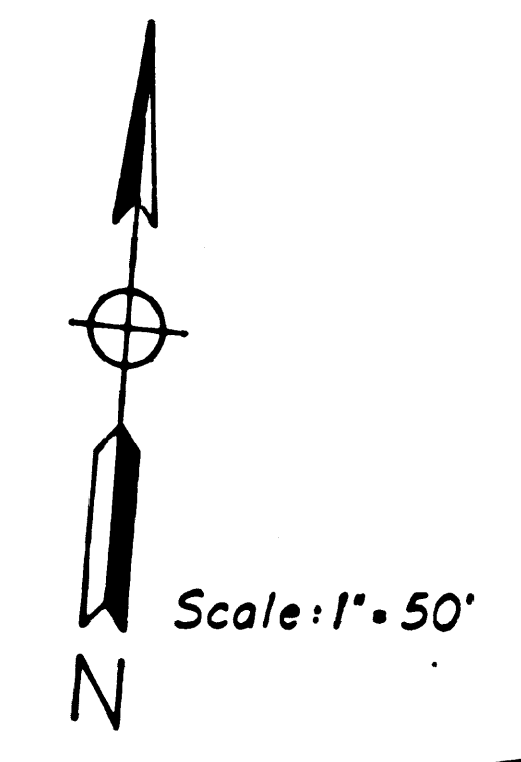
154 11

DIST	COUNTY	ROUTE	POST MILES - TOTAL PROJECT	SHEET NO.	TOTAL SHEETS
7	LA	14	43.04 54.58	8	26

STATE OF CALIFORNIA  
HIGHWAY TRANSPORTATION AGENCY  
DEPARTMENT OF PUBLIC WORKS  
DIVISION OF HIGHWAYS

**MONUMENTATION MAP**

No. MF-1067  
Deputy District Engineer

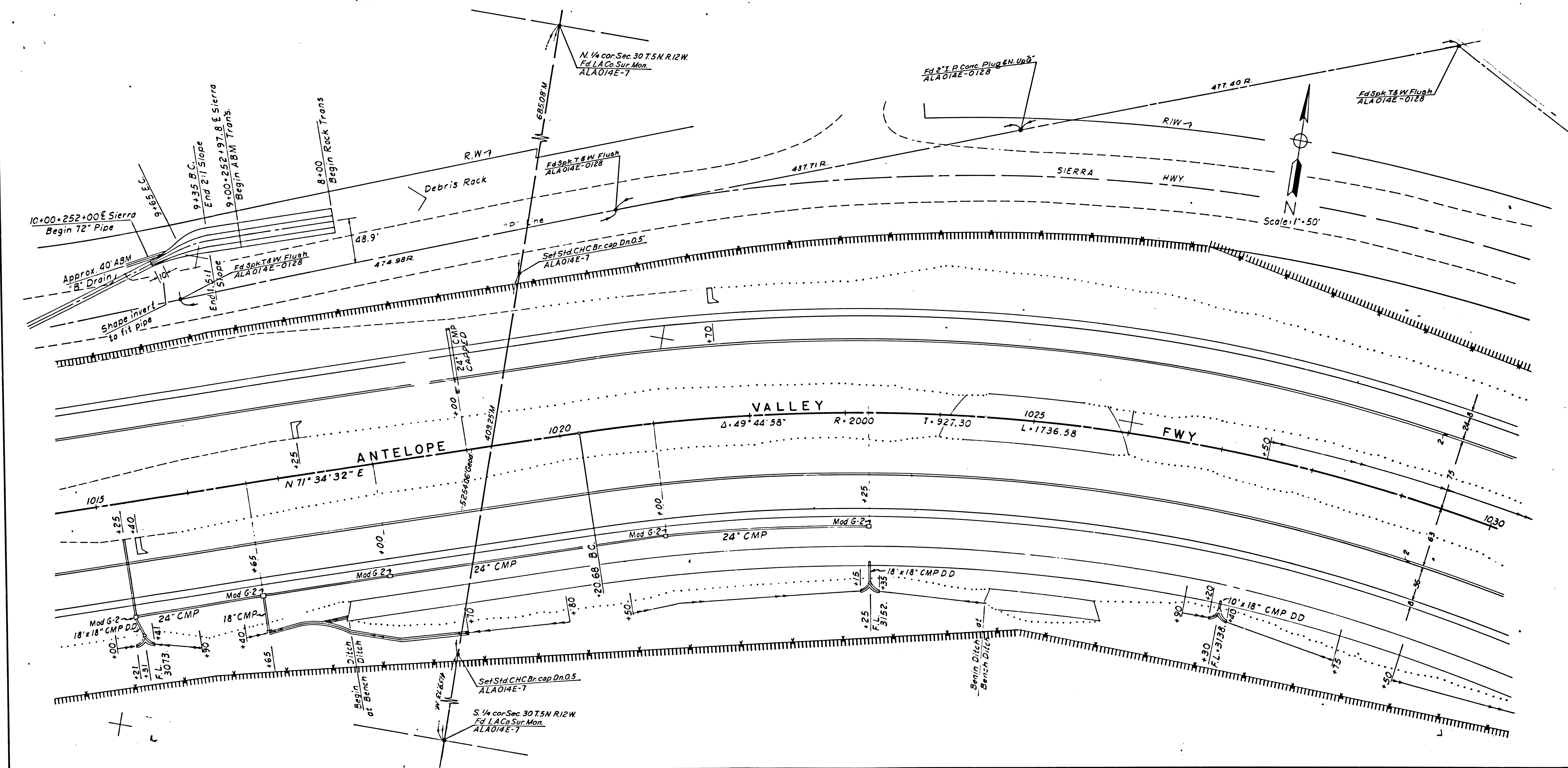


154 11

7	LA	14	43.04	54.58	9	26
---	----	----	-------	-------	---	----

STATE OF CALIFORNIA  
 TRANSPORTATION AGENCY  
 DEPARTMENT OF PUBLIC WORKS  
 DIVISION OF HIGHWAYS  
**MONUMENTATION MAP**  
 No. MF-1067 5

*C. W. H. J.*  
 Deputy District Engineer



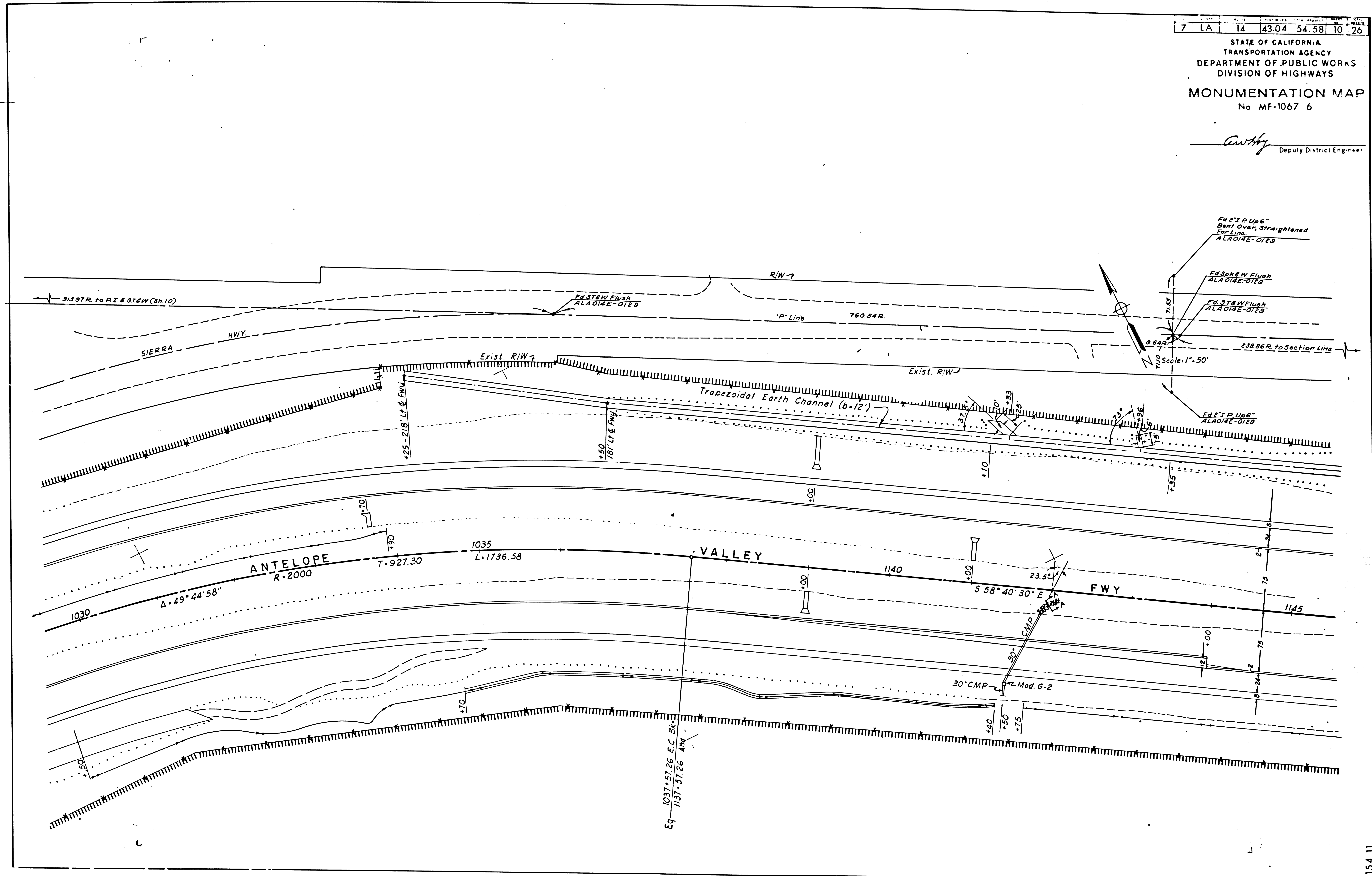
F.M. 20874 | SHT. 5

154 11

7	LA	14	43.04	54.58	10	26
---	----	----	-------	-------	----	----

STATE OF CALIFORNIA  
 TRANSPORTATION AGENCY  
 DEPARTMENT OF PUBLIC WORKS  
 DIVISION OF HIGHWAYS  
**MONUMENTATION MAP**  
 No MF-1067 6

*Anthony*  
 Deputy District Engineer



F.M. 20 874 SHT. 6

154.11

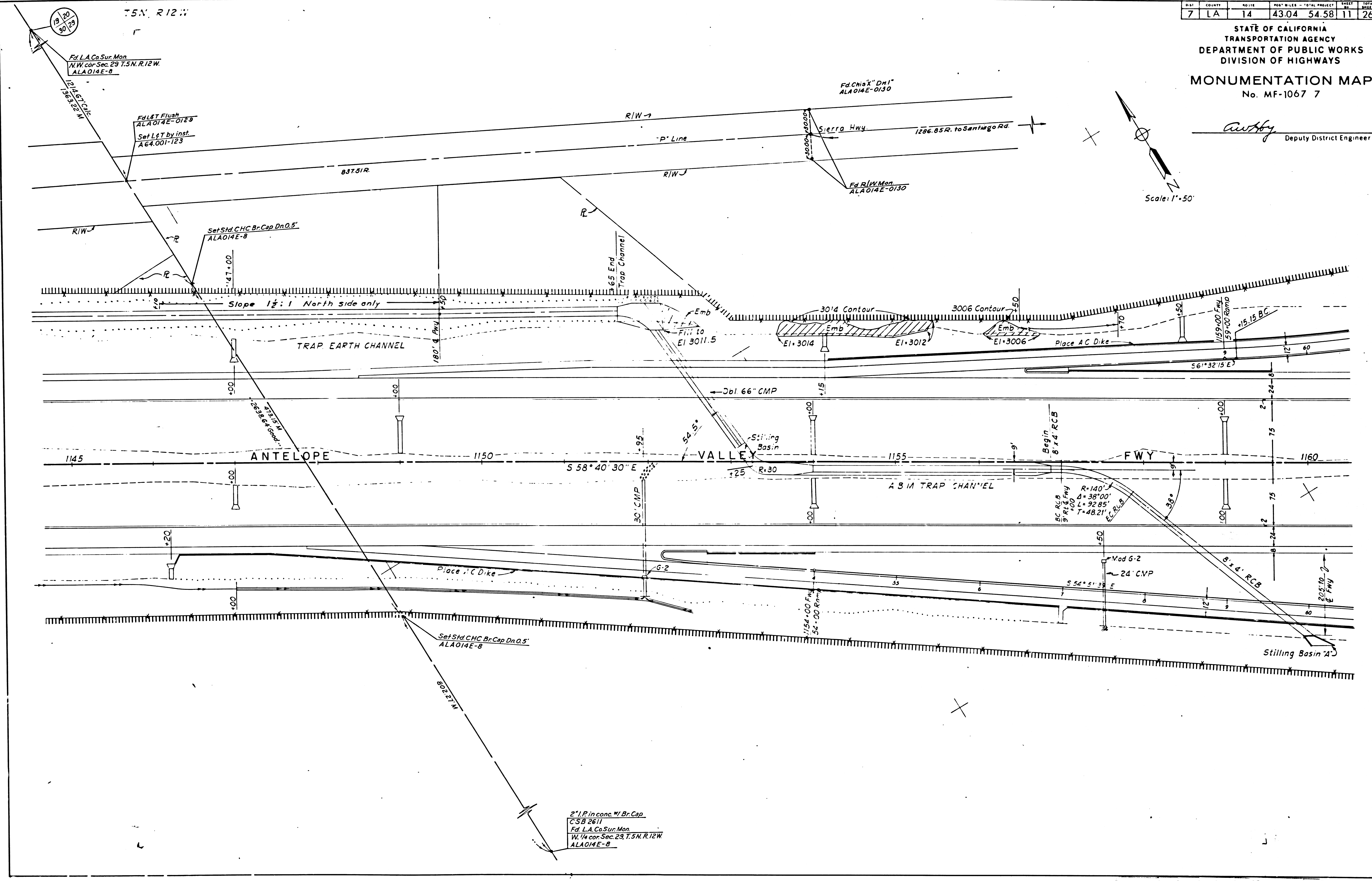
DIST	COUNTY	ROUTE	POST MILES - TOTAL PROJECT	SHEET NO.	TOTAL SHEETS
7	LA	14	43.04 54.58	11	26

STATE OF CALIFORNIA  
 TRANSPORTATION AGENCY  
 DEPARTMENT OF PUBLIC WORKS  
 DIVISION OF HIGHWAYS

**MONUMENTATION MAP**  
 No. MF-1067 7

*Autby*  
 Deputy District Engineer

Scale: 1"=50'



19 20  
 30 28

T5N R12W

Fd L.A. Co. Sur. Map  
 W.W. cor. Sec. 29 T5N R12W  
 ALA014E-8

Fd L&T Flush  
 ALA014E-0128  
 Set L&T by Inst.  
 A64.001-123

Set Std. CHC Br. Cap Dn. 0.5'  
 ALA014E-8

Fd Chis'x' Dn1'  
 ALA014E-0130

Fd R/W Mon  
 ALA014E-0130

Set Std. CHC Br. Cap Dn. 0.5'  
 ALA014E-8

2" I.P. in conc. W. Br. Cap  
 CSB 2611  
 Fd L.A. Co. Sur. Map  
 W.W. cor. Sec. 29 T5N R12W  
 ALA014E-8

154 11

F.M. 20874 | SHT. 7