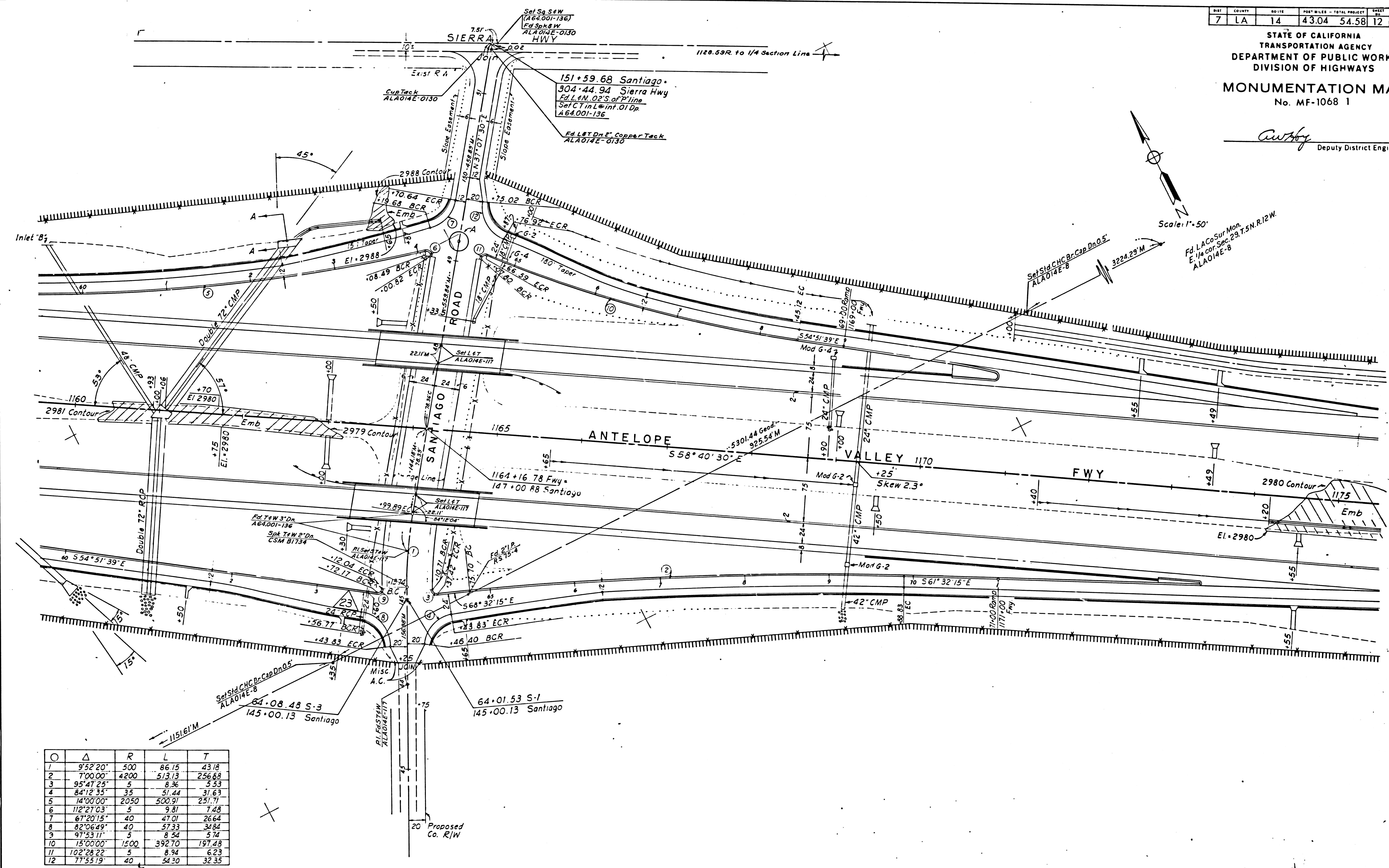
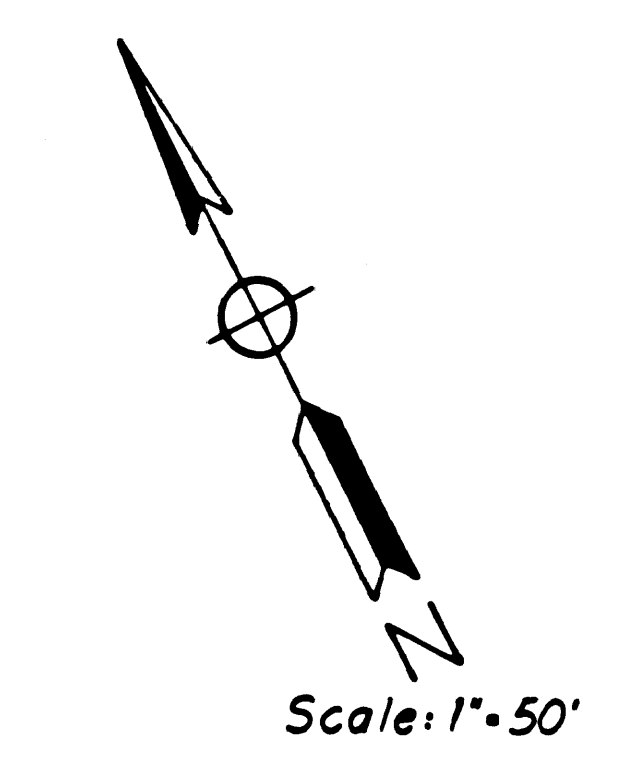


DIST	COUNTY	ROUTE	POST MILES - TOTAL PROJECT	SHEET NO.	TOTAL SHEETS
7	LA	14	43.04 54.58	12	26

STATE OF CALIFORNIA
TRANSPORTATION AGENCY
DEPARTMENT OF PUBLIC WORKS
DIVISION OF HIGHWAYS

MONUMENTATION MAP
No. MF-1068 1

C. W. By
Deputy District Engineer



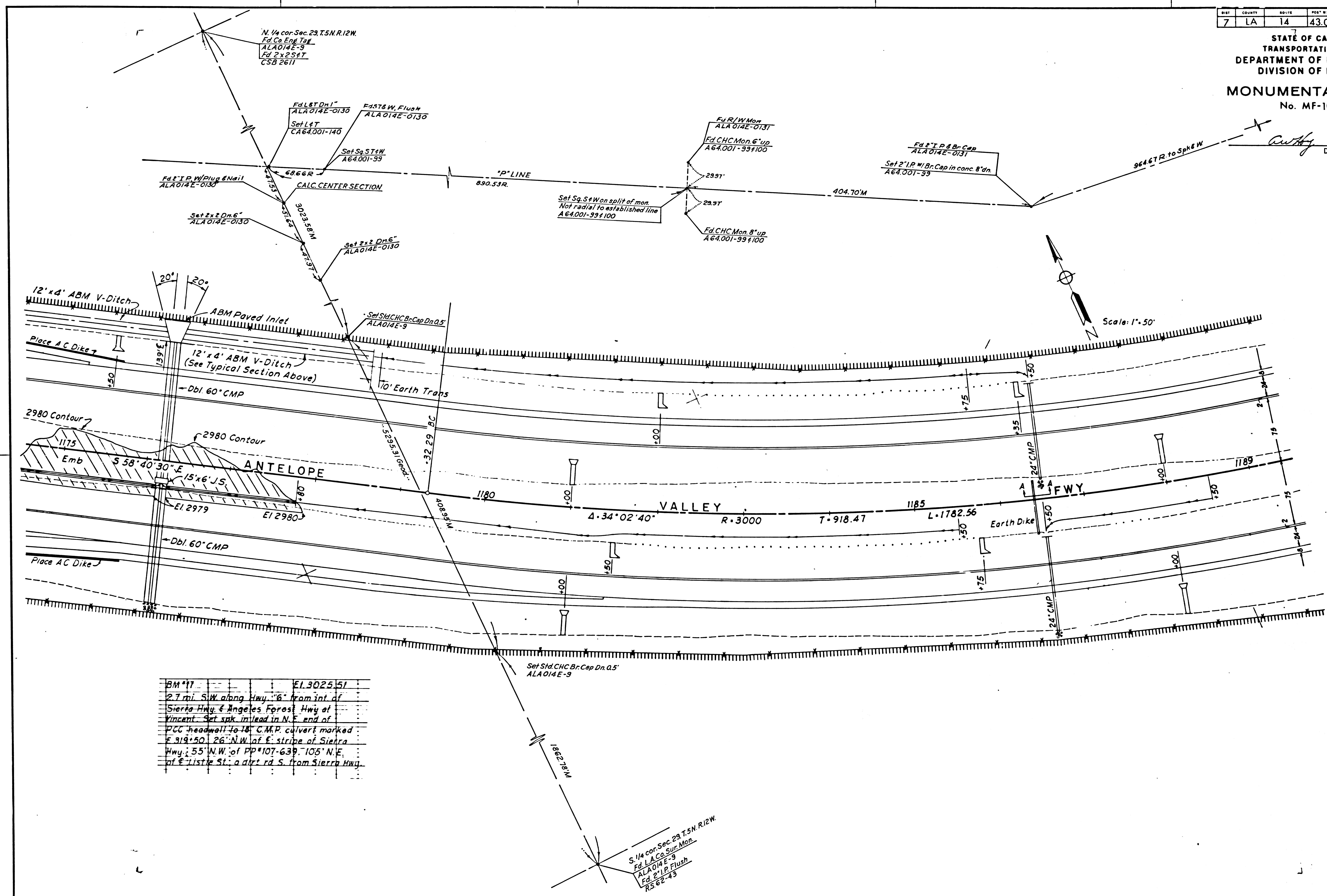
O	Δ	R	L	T
1	9°52'20"	500	86.15	43.18
2	7°00'00"	4200	513.13	256.68
3	95°47'25"	5	8.36	5.53
4	84°12'35"	35	51.44	31.63
5	14°00'00"	2050	500.97	251.77
6	112°27'03"	5	9.81	7.48
7	67°20'15"	40	47.01	26.64
8	82°06'49"	40	57.33	34.84
9	97°53'17"	5	8.54	5.74
10	15°00'00"	1500	392.70	197.48
11	102°28'22"	5	8.94	6.23
12	77°53'19"	40	54.30	32.35

F.M. 20875 | SHT. 1

DIST	COUNTY	ROUTE	POST MILE - TOTAL PROJECT	SHEET NO.	TOTAL SHEETS
7	LA	14	43.04 - 54.58	13	26

STATE OF CALIFORNIA
 TRANSPORTATION AGENCY
 DEPARTMENT OF PUBLIC WORKS
 DIVISION OF HIGHWAYS
MONUMENTATION MAP
 No. MF-1068 2

Authy
 Deputy District Engineer

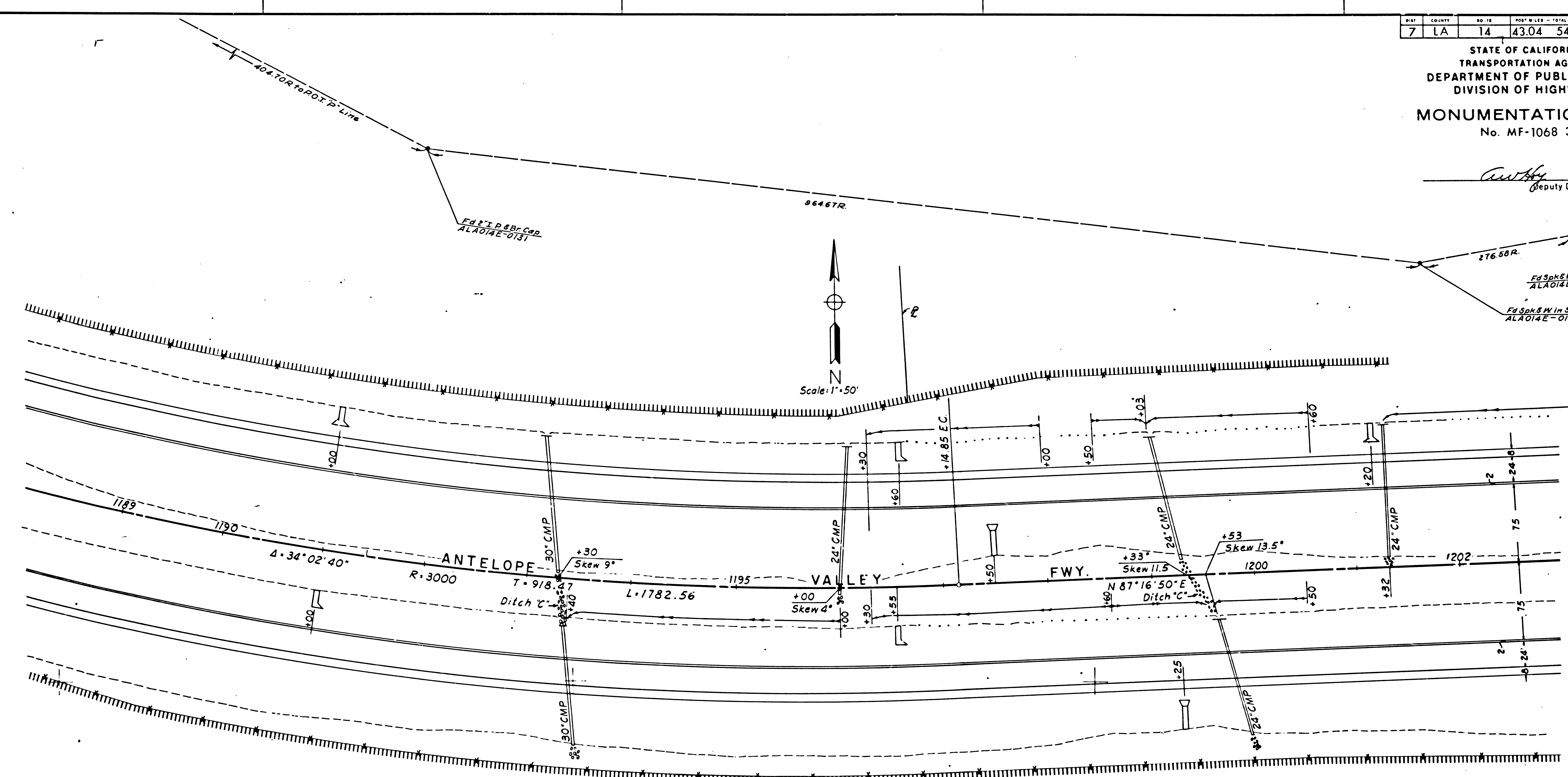


BM #17 - EL 3025.51
 2.7 mi SW along Hwy. 6 from int of
 Sierra Hwy & Angeles Forest Hwy at
 Vincent. Set spike in lead in N.E. end of
 PCC headwall to 18' C.M.P. culvert marked
 & 319+50. 26' NW of E. stripe of Sierra
 Hwy. 55' NW of PP#107-639. 105' N.E.
 of E. stripe St. a dirt rd S. from Sierra Hwy.

DIST.	COUNTY	NO. 14	POST MILES - TOTAL PROJECT	DATE	TOTAL SHEETS
7	LA	14	43.04 54.58	14	28

STATE OF CALIFORNIA
 TRANSPORTATION AGENCY
 DEPARTMENT OF PUBLIC WORKS
 DIVISION OF HIGHWAYS
MONUMENTATION MAP
 No. MF-1068 3

Authy
 Deputy District Engineer



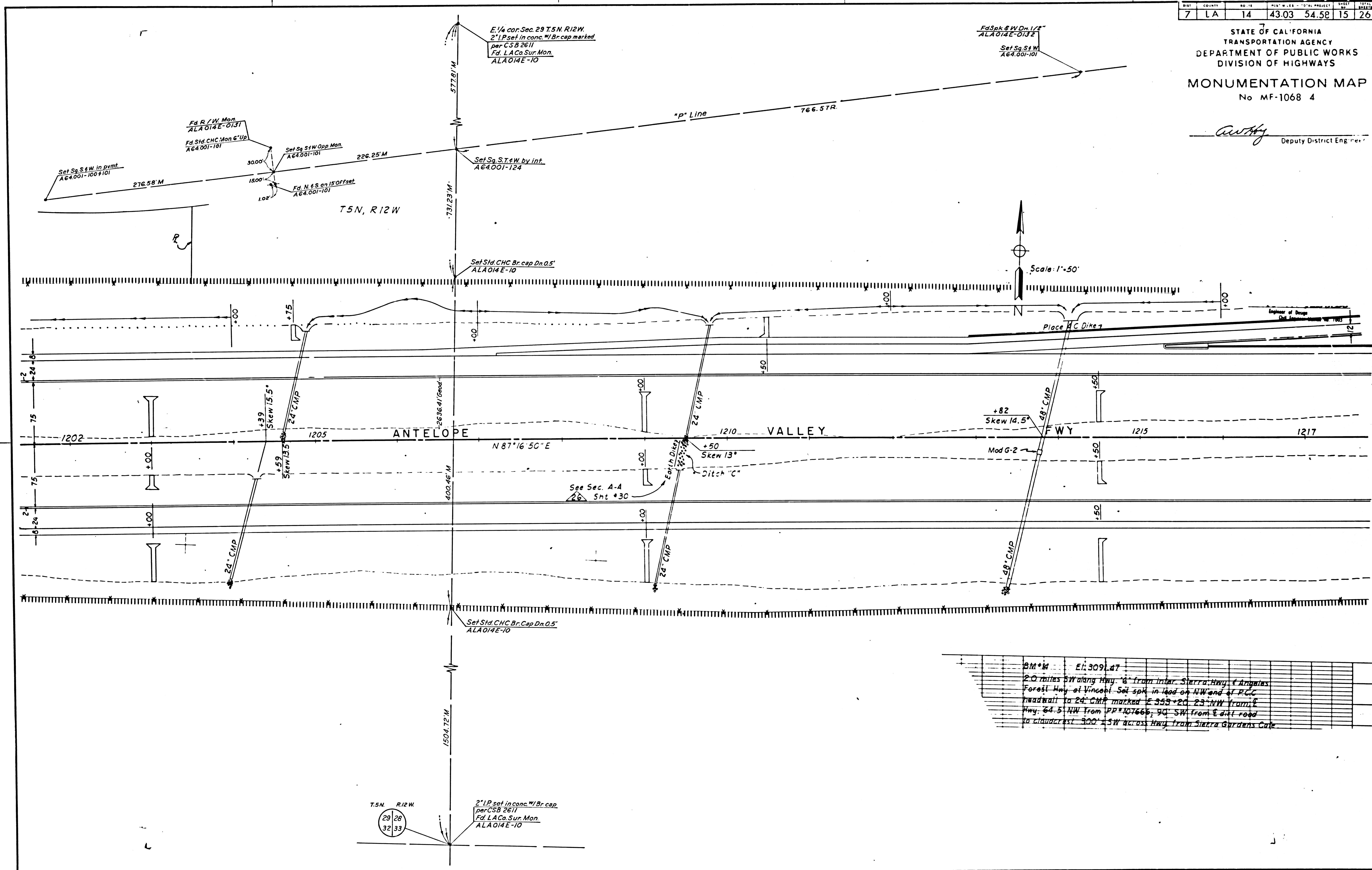
BM #16 - - - - - E1.3072.60
 2.45 miles S.W. along Hwy 61 from inter. of Sierra Hwy. &
 Angeles Forest Hwy. at Vincon. Set spk in lead in N. end of
 P.C.C. headwall to 1st C.M.P. culvert marked E332+00,
 2d NW. of E stripe Sierra Hwy 64 N.E. from PP#101-649

154 11

SHEET	COUNTY	NO. IN	TOTAL PROJECT	SHEET	TOTAL
7	LA	14	43.03 54.58	15	26

STATE OF CALIFORNIA
 TRANSPORTATION AGENCY
 DEPARTMENT OF PUBLIC WORKS
 DIVISION OF HIGHWAYS
MONUMENTATION MAP
 No MF-1068 4

Anthony
 Deputy District Engineer



B.M.#14	El: 309.47
2.0 miles SW along Hwy. 8 from Inter. Sierra Hwy. & Angeles Forest Hwy. at Vincent. Set spk in lead on NW and at P.C. roadwall to 24' CMP marked E 355+20. 23' NW from E Hwy. 64.5' NW from PP 107666, 90' SW from E dirt road to claudcrest 300' SW across Hwy. from Sierra Gardens Cafe	

DIST	COUNTY	ROUTE	TOTAL PROJECT	SHEET	TOTAL SHEETS
7	LA	14	4304 5458	16	26

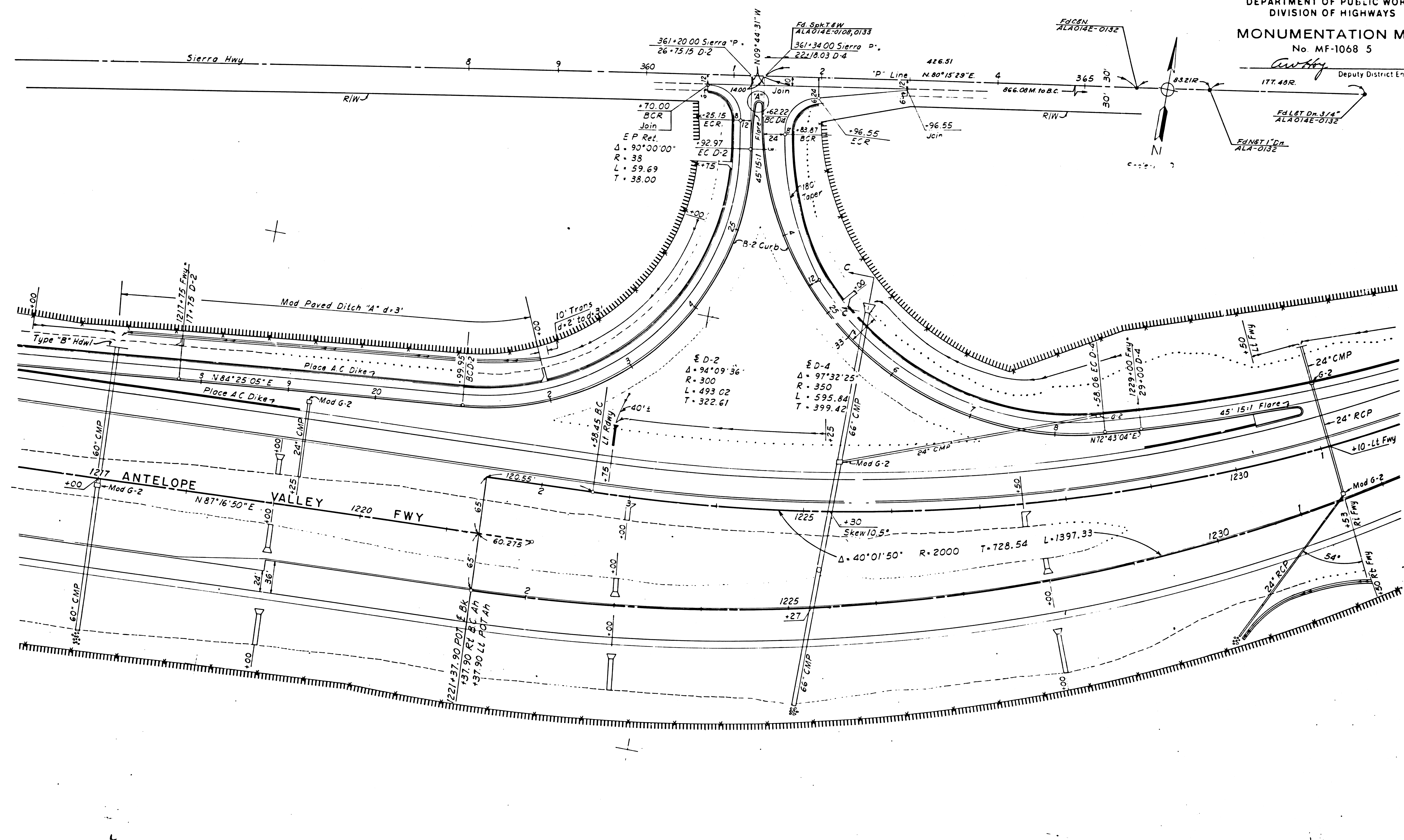
STATE OF CALIFORNIA
 TRANSPORTATION AGENCY
 DEPARTMENT OF PUBLIC WORKS
 DIVISION OF HIGHWAYS

MONUMENTATION MAP
 No. MF-1068 5

C. W. H. H. H.
 Deputy District Engineer

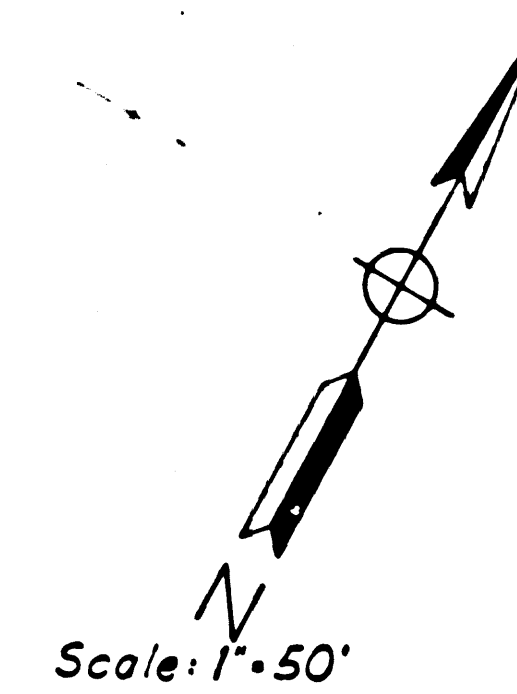
Fd L&T Dn. 3/4"
 ALA 014E-0132

Fd N&T 1" Dn
 ALA-0132



DATE	COUNTY	NO. 14	TOT. AC.	54.58	17	26
------	--------	--------	----------	-------	----	----

STATE OF CALIFORNIA
 TRANSPORTATION AGENCY
 DEPARTMENT OF PUBLIC WORKS
 DIVISION OF HIGHWAYS
MONUMENTATION MAP
 No. MF-1068 6



Anthony
 Deputy District Engineer

W 1/4 cor. Sec. 28, T.5N, R.12W
 Fd. L.A. Co. Sur. Mon.
 ALA014E-12

N 1/4 cor. Sec. 28, T.5N, R.12W
 Fd. L.A. Co. Sur. Mon.
 ALA014E-11

**SERVICE ROAD
 CURVE DATA**

Curve	Δ	R	L	T
1	100°04'18"	80	139.80	95.55
2	16°52'58"	200	58.93	29.68
3	100°19'47"	25	49.45	38.01
4	81°37'55"	25	35.62	21.59

