

Curve Data  
 $\Delta = 40^{\circ}16'10''$   
 $R = 600$   
 $T = 219.98$   
 $L = 421.70$

Section Corner  
 Fd. C.S. Brass  
 Cap Monument

Curve Data  
 $\Delta = 14^{\circ}47'28''$   
 $R = 900$   
 $T = 103.84$   
 $L = 206.52$

Curve Data  
 $\Delta = 63^{\circ}07'59''$   
 $R = 900$   
 $T = 552.96$   
 $L = 991.69$

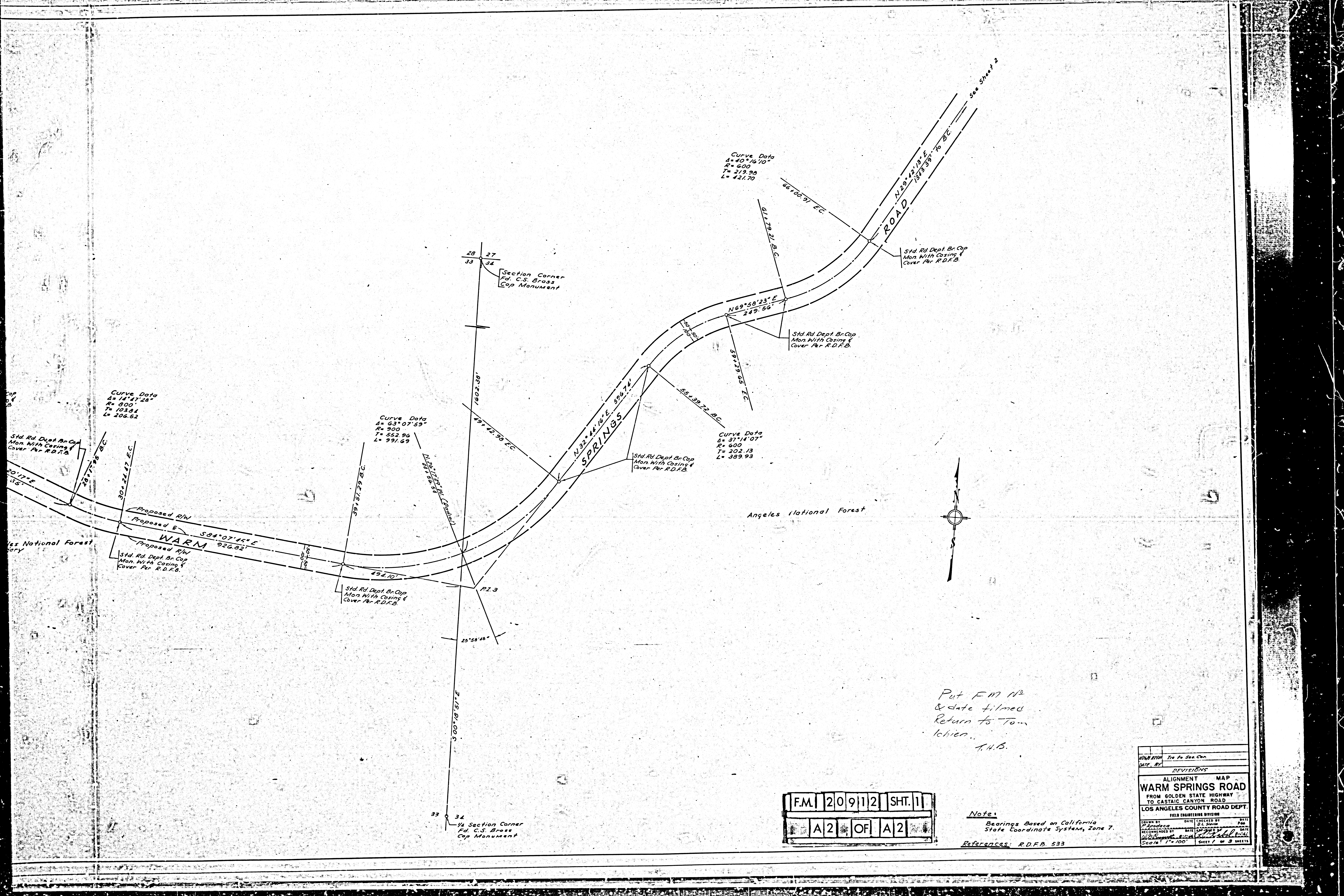
Curve Data  
 $\Delta = 37^{\circ}14'07''$   
 $R = 900$   
 $T = 202.13$   
 $L = 389.93$

Curve Data  
 $\Delta = 61^{\circ}43'56''$   
 $R = 600$   
 $T = 358.61$   
 $L = 646.46$

FM	20	912	SHT.	1
ALL OF A2				

Section Corner  
 Fd. C.S. Brass  
 Cap Monument

Angeles National Forest



Curve Data  
 $\Delta = 14^{\circ} 17' 28''$   
 $R = 800$   
 $T = 103.81$   
 $L = 206.52$

Curve Data  
 $\Delta = 63^{\circ} 07' 59''$   
 $R = 900$   
 $T = 552.96$   
 $L = 991.69$

Curve Data  
 $\Delta = 40^{\circ} 16' 10''$   
 $R = 600$   
 $T = 219.98$   
 $L = 421.70$

Curve Data  
 $\Delta = 37^{\circ} 14' 07''$   
 $R = 600$   
 $T = 202.13$   
 $L = 389.93$

Put FM No  
 & date filmed  
 Return to Tom  
 Ichien.  
 T.H.B.

FM 20912 SHT. 1  
 A2 OF A2

Note:  
 Bearings Based on California  
 State Coordinate System, Zone 7.

References: R.D.F.B. 533

DATE	BY	REVISIONS
ALIGNMENT MAP		
WARM SPRINGS ROAD		
FROM GOLDEN STATE HIGHWAY		
TO CASTAIC CANYON ROAD		
LOS ANGELES COUNTY ROAD DEPT.		
FIELD ENGINEERING DIVISION		
DRAWN BY	DATE	CHECKED BY
APPROVED BY	DATE	
Scale: 1" = 100'	SHEET 1 OF 3 SHEETS	