

Curve
A=40
R=40
T=10
L=31

Proposed R/W
Proposed L
Proposed R/W
See Sheet 1

Curve Data
A=22°39'11"
R=600
T=160.24
L=316.30

Angeles National Forest

Std. Rd. Dept. Br. Cap.
Mon. With Casing & Cover
Per R.D.F.B.

N07°03'02"E
1026.64'

WARM

Std. Rd. Dept. Br. Cap.
Mon. With Casing & Cover
Per R.D.F.B.

Curve Data
A=37°59'15"
R=600
T=206.52
L=397.00

Curve Data
A=33°15'36"
R=500
T=149.34
L=290.25

Std. Rd. Dept. Br. Cap.
Mon. With Casing & Cover
Per R.D.F.B.

Std. Rd. Dept. Br. Cap.
Mon. With Casing & Cover
Per R.D.F.B.

Curve Data
A=150°17'27"
R=400
T=1508.12
L=1049.23

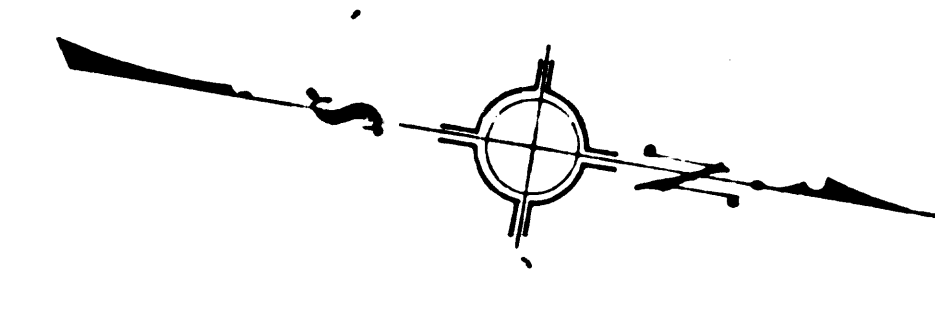
Std. Rd. Dept. Br. Cap.
Mon. With Casing & Cover
Per R.D.F.B.

Curve Data
A=16°18'31"
R=400
T=57.32
L=113.96

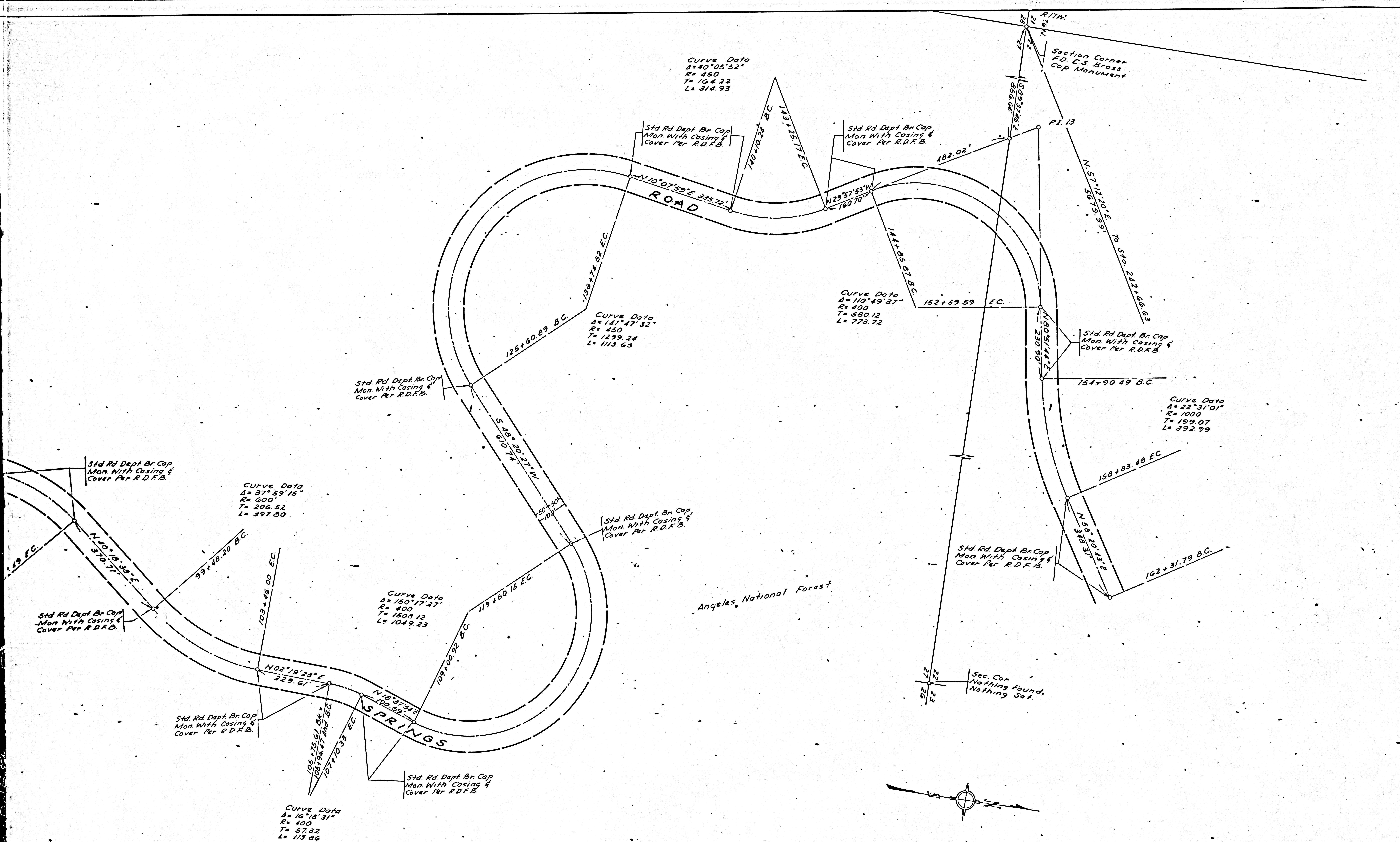
Curve Data
A=141°47'32"
R=450
T=1299.24
L=1113.63

Std. Rd. Dept. Br. Cap.
Mon. With Casing & Cover
Per R.D.F.B.

Ang



F.M. 20912 SHT. 2
A1 OF A2



Curve Data
 $\Delta = 40^{\circ}05'52''$
 $R = 450$
 $T = 164.22$
 $L = 314.93$

Curve Data
 $\Delta = 141^{\circ}47'32''$
 $R = 450$
 $T = 1299.34$
 $L = 1113.63$

Curve Data
 $\Delta = 110^{\circ}49'37''$
 $R = 400$
 $T = 580.12$
 $L = 773.72$

Curve Data
 $\Delta = 22^{\circ}31'01''$
 $R = 1000$
 $T = 199.07$
 $L = 392.99$

Curve Data
 $\Delta = 37^{\circ}59'15''$
 $R = 600$
 $T = 206.52$
 $L = 397.80$

Curve Data
 $\Delta = 150^{\circ}17'27''$
 $R = 400$
 $T = 1504.12$
 $L = 1049.23$

Curve Data
 $\Delta = 16^{\circ}16'31''$
 $R = 400$
 $T = 57.32$
 $L = 113.86$

F.M. 20912 SHT. 2
 A 2 OF A 2

Notes:
 Bearings Based on California
 State Coordinate System,
 Zone 7.
 References: R.D.F.B. 533

ALIGNMENT MAP WARM SPRINGS ROAD FROM GOLDEN STATE HIGHWAY TO CASTAIC CANYON ROAD LOS ANGELES COUNTY ROAD DEPT. FIELD ENGINEERING DIVISION		
DESIGNED BY C. J. ...	DATE CHECKED BY ...	DATE ...
RECORDED BY ...	DATE APPROVED BY ...	DATE ...
Scale: 1" = 100'		SHEET 2 OF 3 SHEETS

40-2750