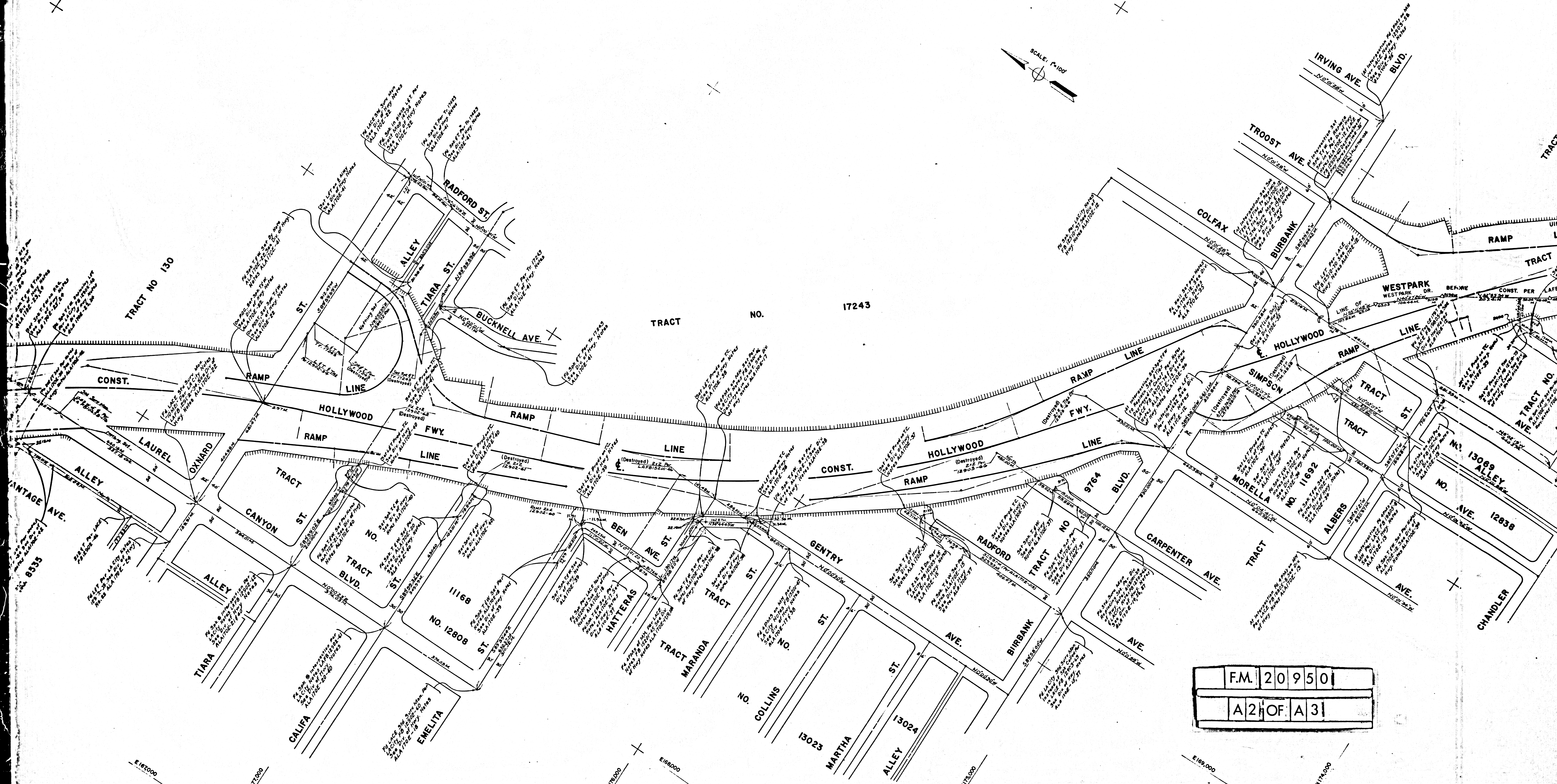
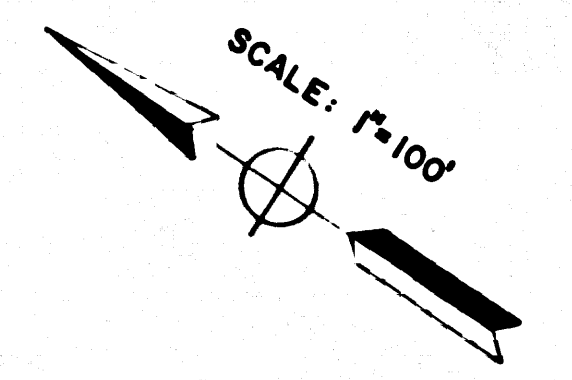


DATE	
6/67	Designer K. LEE
6/67	Map Supervisor P. NASVIK
6/67	Project Engineer T. THOMAS
6/67	Check / Survey Engineer W. SORLIE
6/67	Approved / Recommended By / Assistant District Engineer L. J. TROMBATORE

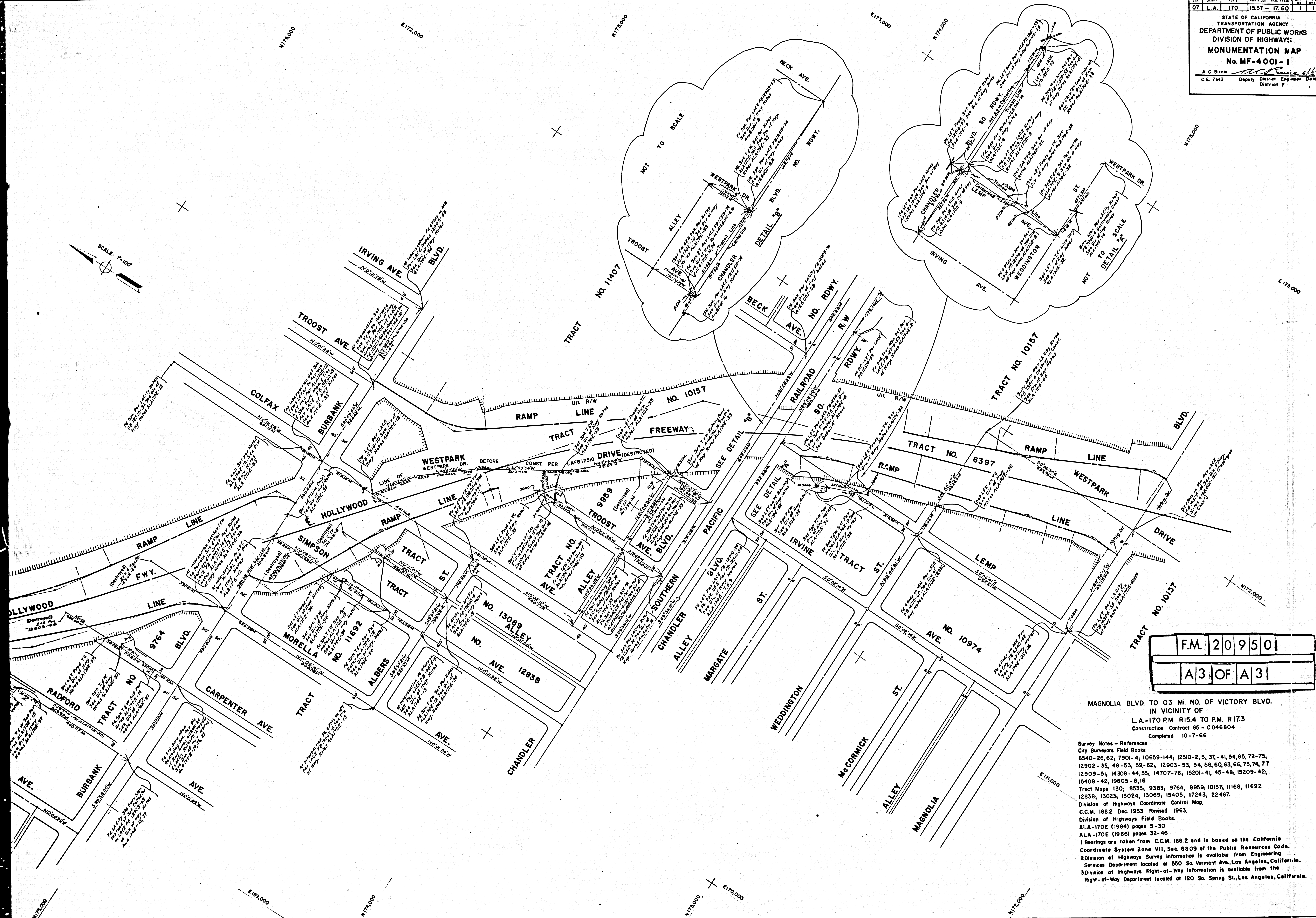
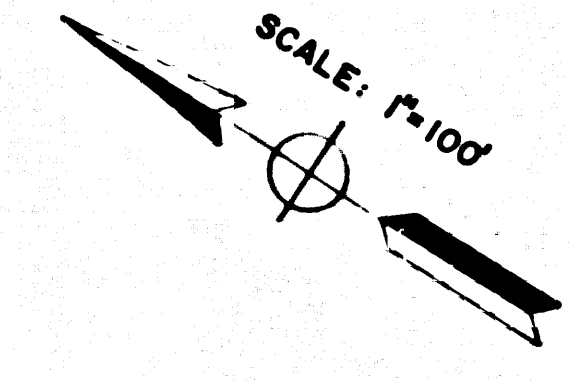
F.M. 20950  
A 1 OF A 3

N172,000 E170,000 N178,000 E171,000 N176,000 N174,000 E176,000



F.M. 20950  
A2 OF A3

E167,000 N170,000 N176,000 E168,000 N172,000 E169,000



F.M.	209501
A3	OF A3

MAGNOLIA BLVD. TO 03 MI. NO. OF VICTORY BLVD.  
 IN VICINITY OF  
 L.A.-170 P.M. R15.4 TO P.M. R173  
 Construction Contract 65 - C046804  
 Completed 10-7-66

Survey Notes - References  
 City Surveyors Field Books  
 6540-26, 62, 7901-4, 10659-144, 12510-2, 5, 37, -41, 54, 65, 72-75,  
 12902-35, 48-53, 59, 62, 12903-53, 54, 58, 60, 63, 66, 73, 74, 77  
 12909-51, 14308-44, 55, 14707-76, 15201-41, 45-48, 15209-42,  
 15409-42, 19805-8, 16  
 Tract Maps 130, 8535, 9383, 9764, 9959, 10157, 11168, 11692  
 12838, 13023, 13024, 13069, 15405, 17243, 22467.  
 Division of Highways Coordinate Control Map.  
 C.C.M. 168.2 Dec 1953 Revised 1963.  
 Division of Highways Field Books.  
 ALA-170E (1964) pages 5-30  
 ALA-170E (1966) pages 32-46  
 1. Bearings are taken from C.C.M. 168.2 and is based on the California  
 Coordinate System Zone VII, Sec. 8809 of the Public Resources Code.  
 2. Division of Highways Survey information is available from Engineering  
 Services Department located at 550 So. Vermont Ave., Los Angeles, California.  
 3. Division of Highways Right-of-Way information is available from the  
 Right-of-Way Department located at 120 So. Spring St., Los Angeles, California.