

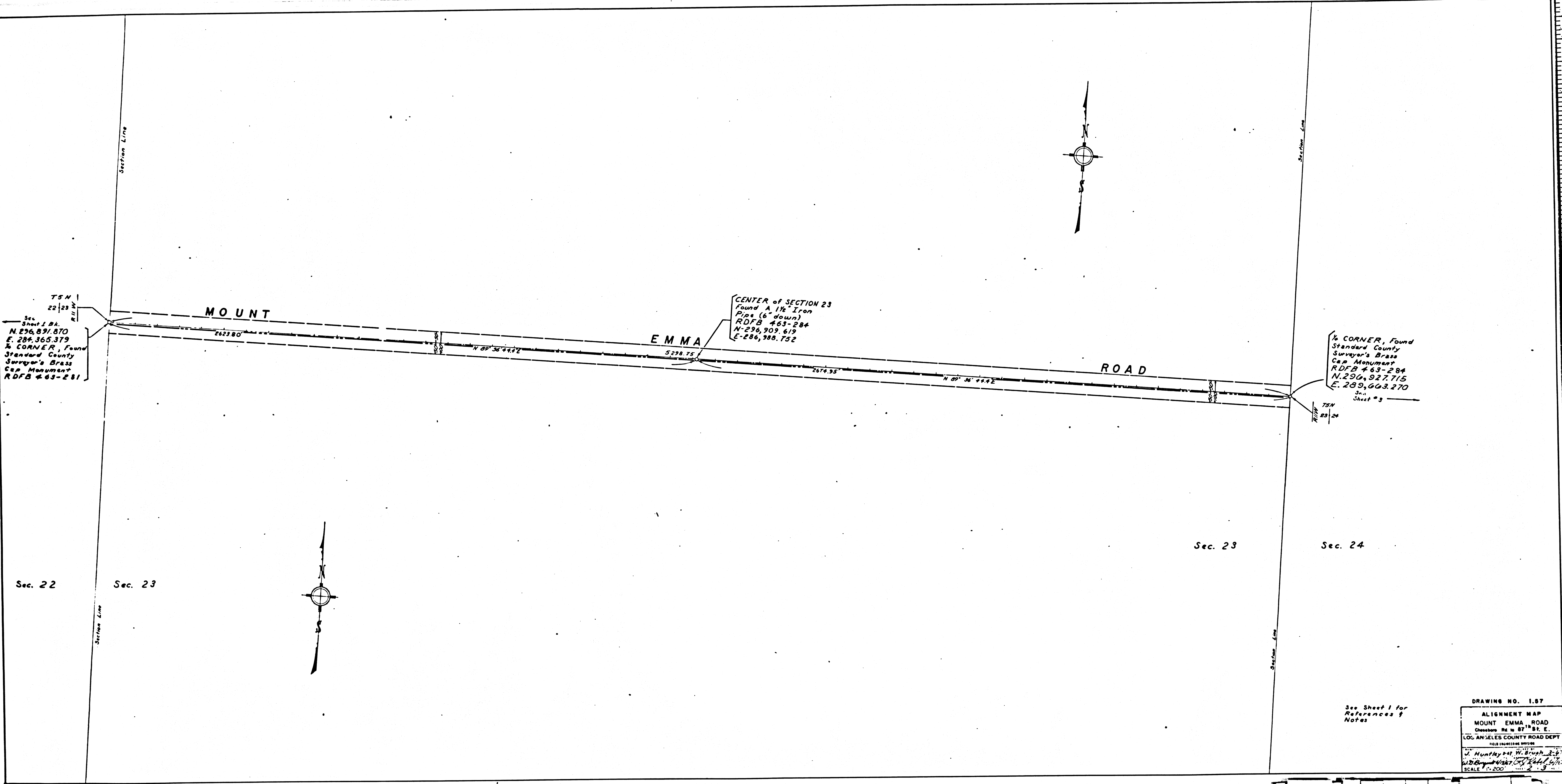
**NOTE:**  
 1. Ground length 10,999.861 = grid coordinate lengths.  
 2. The basis of bearings is  $N 81^{\circ} 54' 36'' E$  per existing Mt. Emma Road.  
 3. Monuments shown TO BE SET will be in place not later than 6 months after completion of construction.

**REFERENCES:**  
 1. R.D.F.B. 463  
 2. P.M. 20263  
 3. City of Los Angeles Dept. of Water & Power Map No. L-802

**LEGEND**  
 Section Lines  
 1/4 Section Line  
 R/W Line  
 Road E

DRAWING NO. RDM 1.56  
 ALIGNMENT MAP  
 MOUNT EMMA ROAD  
 Chubbuck Rd to 87<sup>th</sup> St. E  
 LOS ANGELES COUNTY ROAD DEPT.  
 2013 PROVISIONS APPLICABLE  
 Scale: 1" = 200'

F.M. 20974 SHT. 1



TSN  
22/23  
Sec. 22  
Shot 1 B.A.  
N. 296,891.870  
E. 284,365.379  
1/4 CORNER, Found  
Standard County  
Surveyor's Brass  
Cap Monument  
R.D.B. # 63-281

CENTER of SECTION 23  
Found "A" 1 1/2" Iron  
Pipe (6" down)  
R.D.B. # 63-284  
N-296,909.619  
E-286,988.752

1/4 CORNER, Found  
Standard County  
Surveyor's Brass  
Cap Monument  
R.D.B. # 63-284  
N. 290,927.715  
E. 289,663.270  
TSN  
23/24  
Sheet # 3

See Sheet 1 for  
References &  
Notes

DRAWING NO. 1.87  
ALIGNMENT MAP  
MOUNT EMMA ROAD  
Drawing No. 87-18-87 E.  
LOS ANGELES COUNTY ROAD DEPT.  
FIELD ENGINEER SERVICE  
J. Huntley and W. Bush, E.C.  
Surveyors  
SCALE 1" = 200'

F.M. 20974 SHT. 2

1/4 CORNER, Found  
Standard County  
Surveyor's Brass  
Cap Monument  
RDFB #63-284  
N. 296,927.715  
E. 289,663.270

N-296,941.553  
E-292,312.739  
CENTER of SECTION 24  
Found A Standard  
County Surveyor's  
Brass Cap Monument  
RDFB #63-256,7

1/4 CORNER, Found  
Standard County  
Surveyor's Brass  
Cap Monument  
RDFB #63-253,4  
N. 290,955.374  
E. 294,959.672  
See CSB 2950

MOUNT EMMA ROAD  
2649.87' 5297.41' 2647.56' 2647.56'

Sec. 23

Sec. 24

Sec. 24

Sec. 19

See Sheet 1 for  
References &  
Notes

DRAWING NO. 1.58  
ALIGNMENT MAP  
MOUNT EMMA ROAD  
CHUCKER 24 W 87 E  
LOS ANGELES COUNTY ROAD DEPT  
1913 14 15 16 17 18 19 20 21 22 23 24 25 26 27 28 29 30 31 32 33 34 35 36 37 38 39 40 41 42 43 44 45 46 47 48 49 50 51 52 53 54 55 56 57 58 59 60 61 62 63 64 65 66 67 68 69 70 71 72 73 74 75 76 77 78 79 80 81 82 83 84 85 86 87 88 89 90 91 92 93 94 95 96 97 98 99 100  
1/4 CORNER, Found  
Standard County  
Surveyor's Brass  
Cap Monument  
RDFB #63-284  
N. 296,927.715  
E. 289,663.270  
N-296,941.553  
E-292,312.739  
CENTER of SECTION 24  
Found A Standard  
County Surveyor's  
Brass Cap Monument  
RDFB #63-256,7  
1/4 CORNER, Found  
Standard County  
Surveyor's Brass  
Cap Monument  
RDFB #63-253,4  
N. 290,955.374  
E. 294,959.672  
See CSB 2950  
See Sheet 1 for  
References &  
Notes  
DRAWING NO. 1.58  
ALIGNMENT MAP  
MOUNT EMMA ROAD  
CHUCKER 24 W 87 E  
LOS ANGELES COUNTY ROAD DEPT  
1913 14 15 16 17 18 19 20 21 22 23 24 25 26 27 28 29 30 31 32 33 34 35 36 37 38 39 40 41 42 43 44 45 46 47 48 49 50 51 52 53 54 55 56 57 58 59 60 61 62 63 64 65 66 67 68 69 70 71 72 73 74 75 76 77 78 79 80 81 82 83 84 85 86 87 88 89 90 91 92 93 94 95 96 97 98 99 100

F.M. 20974 SHT. 3