

F.M.	21001
A1	OF A4

F.C. 18
141 24-4 6

seq

N. 89° 24' 36" E.
2642.34 to E. MARQUARDT AV

W. 1/2, S.W. 1/4, Sec. 33, T.33, R.11W.

CITY

OF

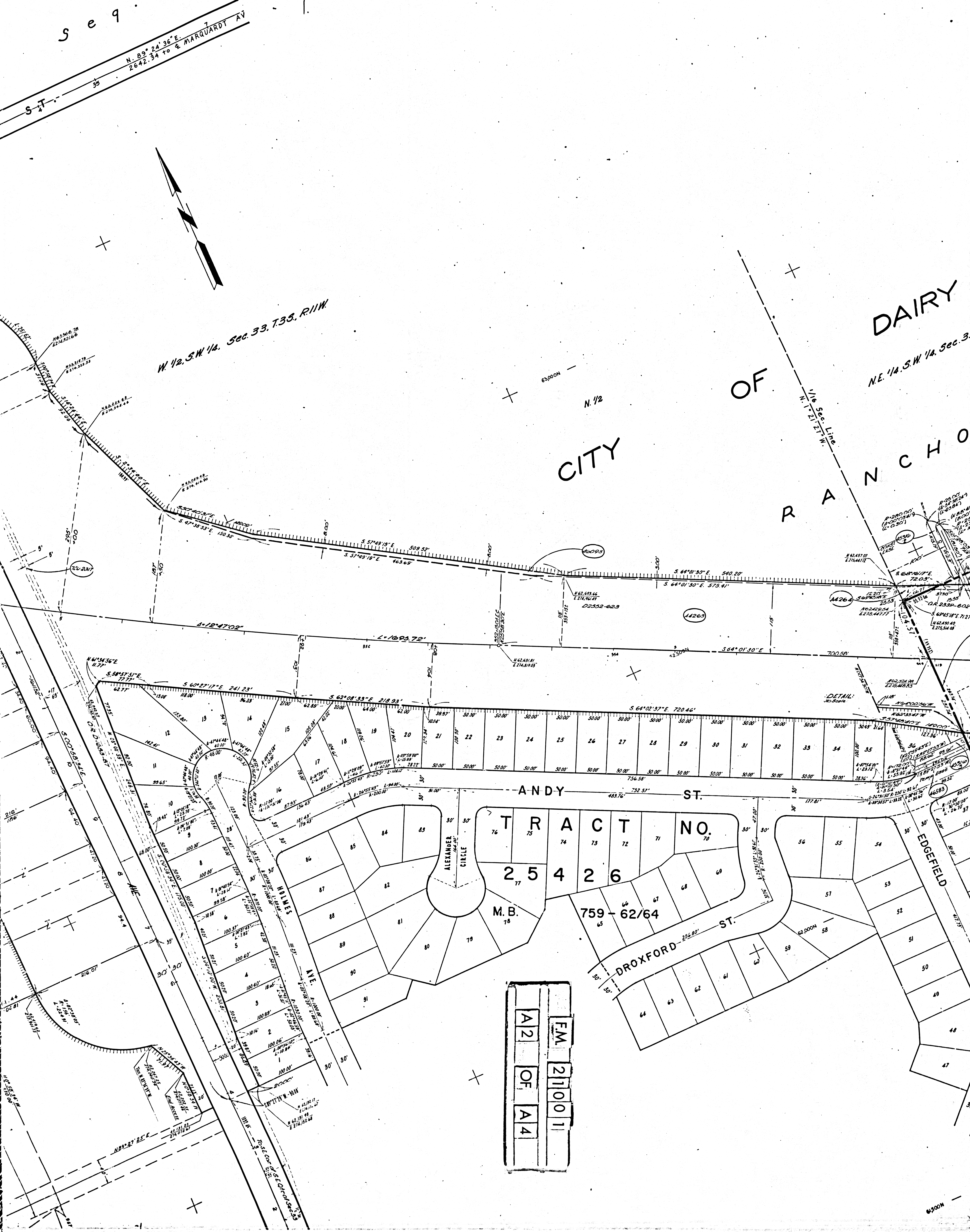
RANCHO

DAIRY

N.E. 1/4, S.W. 1/4, Sec. 33.

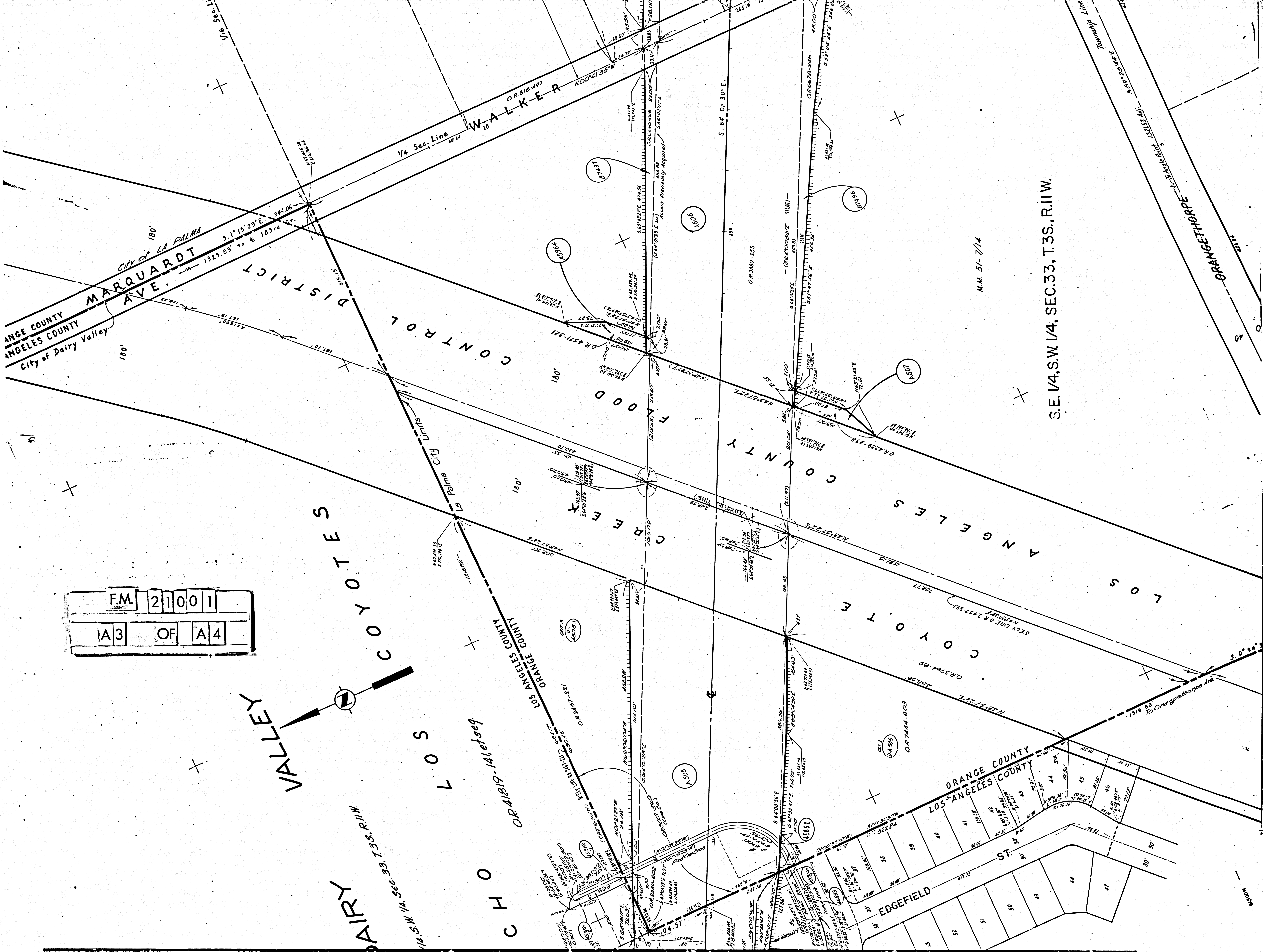
N. 1/2

1/16 Sec. Line
N. 17° 27' 27" W.



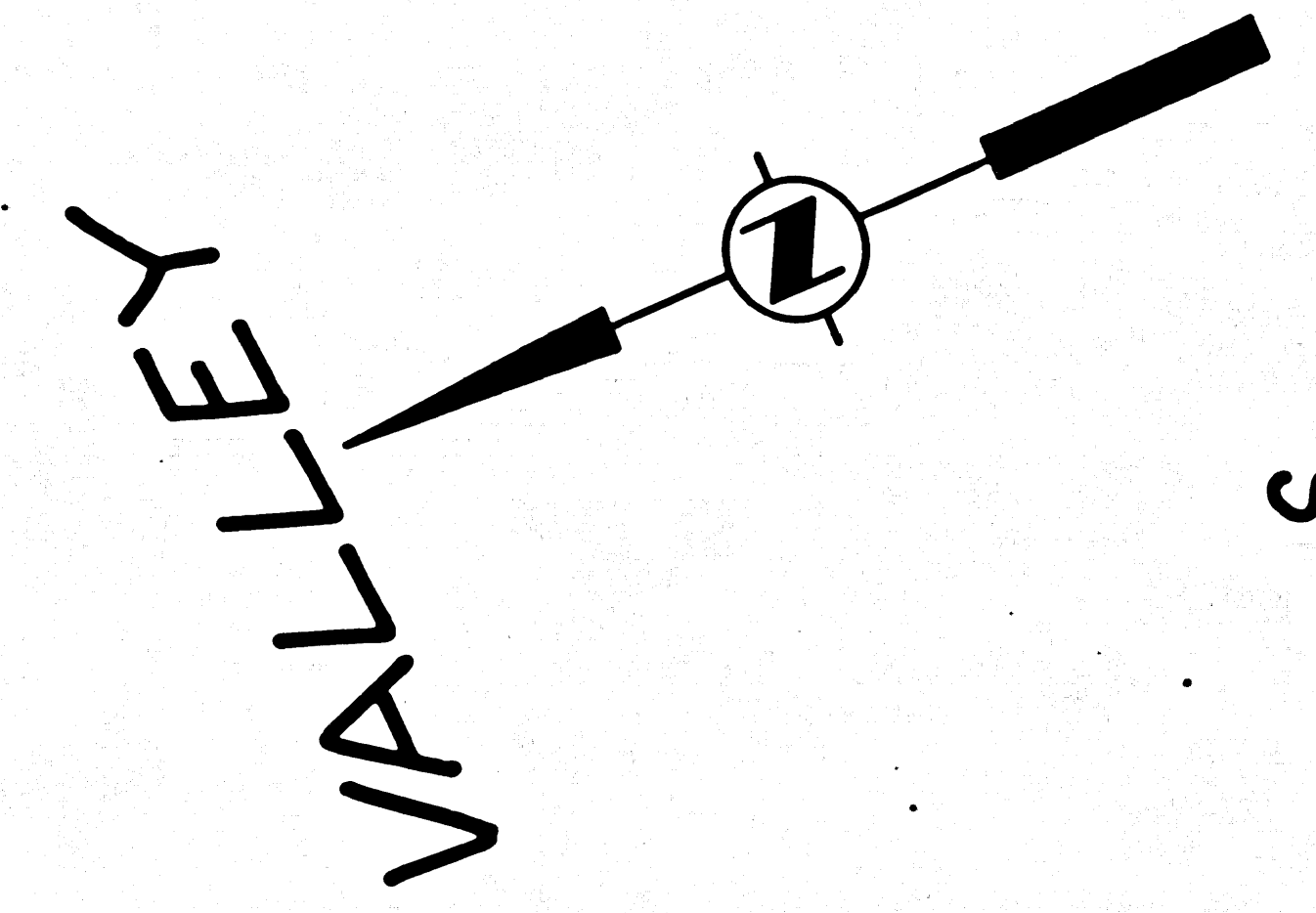
FM 210011
A2 OF A4

6500N



S.E. 1/4, SW 1/4, SEC. 33, T. 3S., R. 11W.

FM 21001
 A3 OF A4



VALLEY
 COYOTES
 LOS
 CHOCOMAINE
 ORANGE COUNTY
 LOS ANGELES COUNTY

CP 41819-141, et seq

LOS ANGELES COUNTY

LOS ANGELES COUNTY

LOS ANGELES COUNTY

LOS ANGELES COUNTY

LOS ANGELES COUNTY

LOS ANGELES COUNTY

LOS ANGELES COUNTY

LOS ANGELES COUNTY

LOS ANGELES COUNTY

LOS ANGELES COUNTY

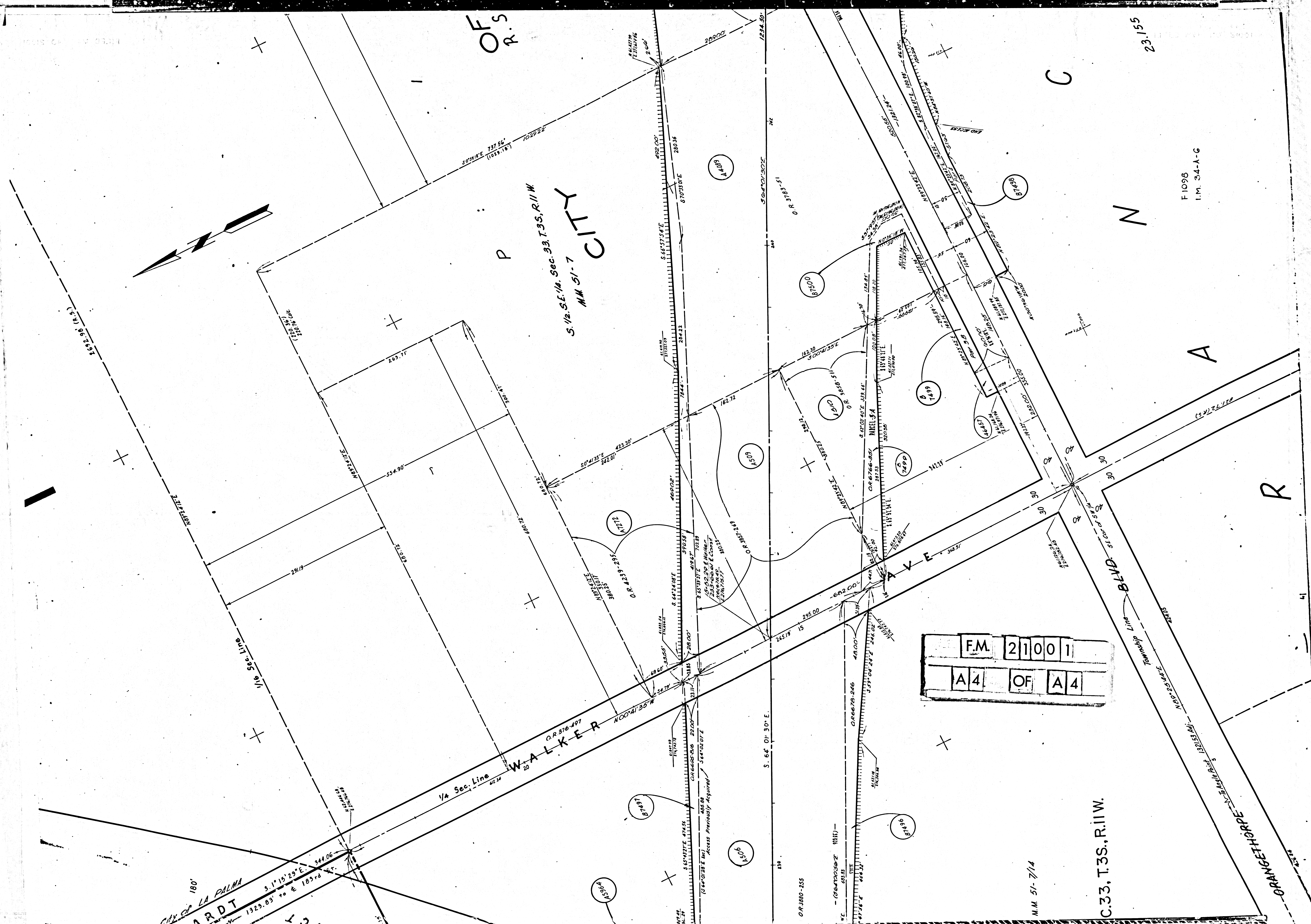
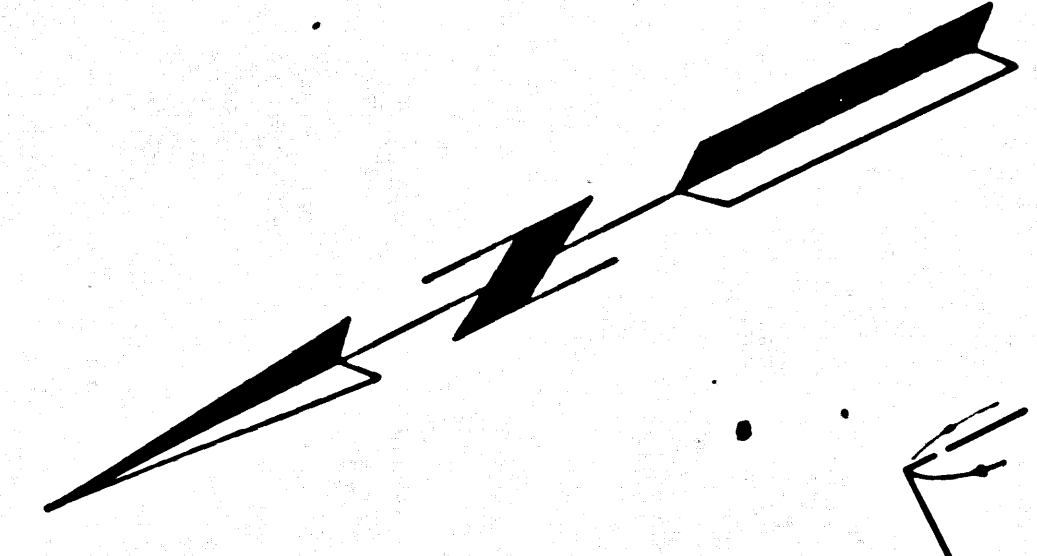
LOS ANGELES COUNTY

LOS ANGELES COUNTY

LOS ANGELES COUNTY

LOS ANGELES COUNTY

LOS ANGELES COUNTY



CITY OF LA PALMA
HARDT
3.1° 15' 29" E. 344.06
1323.83' to & 183rd E.F.

O.F.S.
R.

S. 1/2 S.E. 1/4, Sec. 33, T.3S., R.11 W.
M.M. 51-7 CITY

1/4 Sec. Line WALKER
O.R. 376-497
N. 00° 41' 35" W.

C.33, T.3S., R.11 W.

F.M. 21001
A4 OF A4

M.M. 51-7/14

F 1098
I.M. 34-A-G

23.155

ORANGE HERRING

Orange Ave

Walker Ave