

C I T Y O F B E L L

2001-A



SEC. 26 T. 3 S. R. 12 W.

R A N C H O L O

LA-175-A, LBch SCALE: 1" = 50' Sht. 10 of

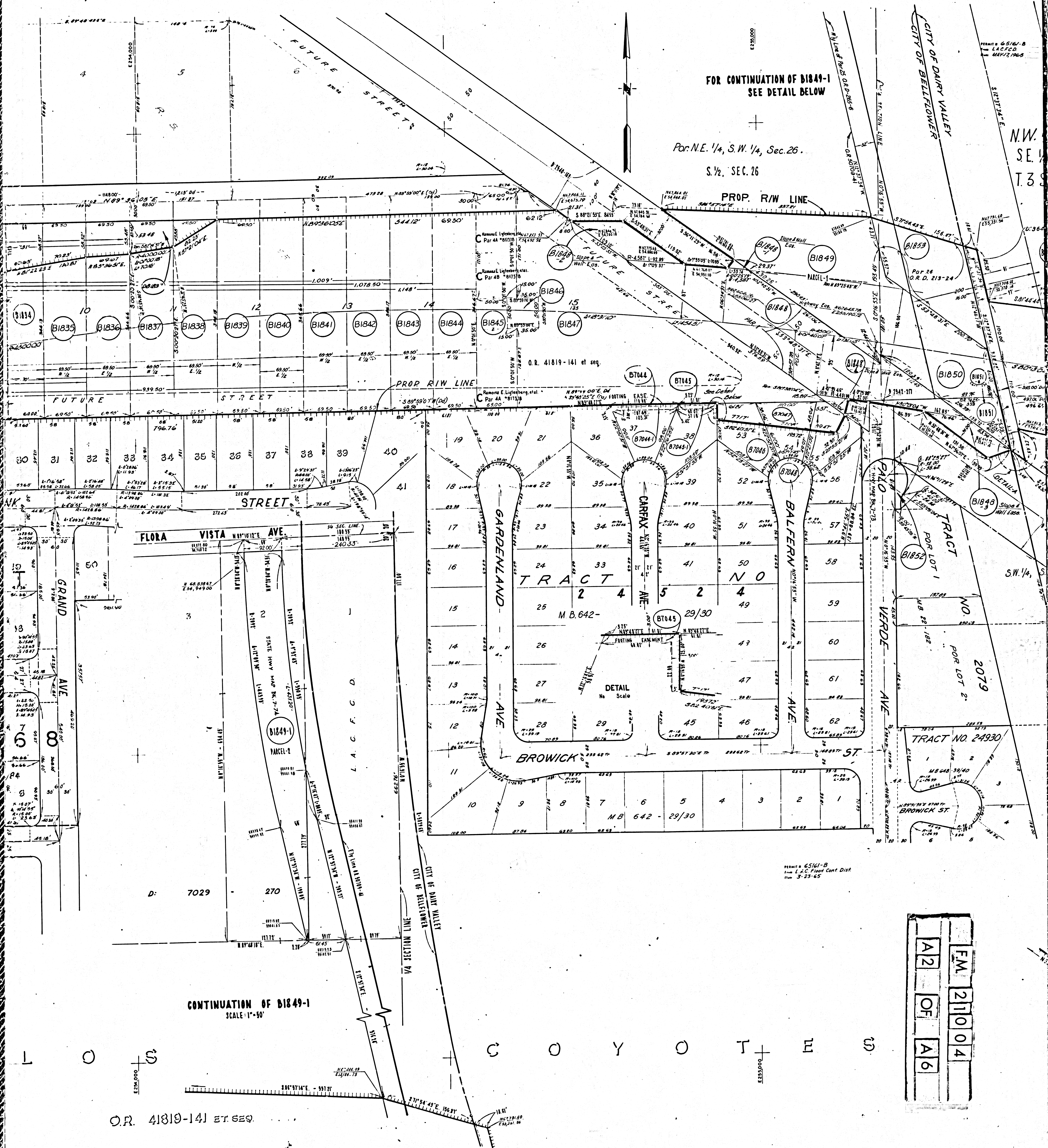
FM	21004
OF	6
LA	175-A

EBB,000

B E L L F L O W E R

FOR CONTINUATION OF B1849-1
SEE DETAIL BELOW

Por. N.E. 1/4, S.W. 1/4, Sec. 26.
S. 1/2, SEC. 26



CONTINUATION OF B1849-1
SCALE: 1"=50'

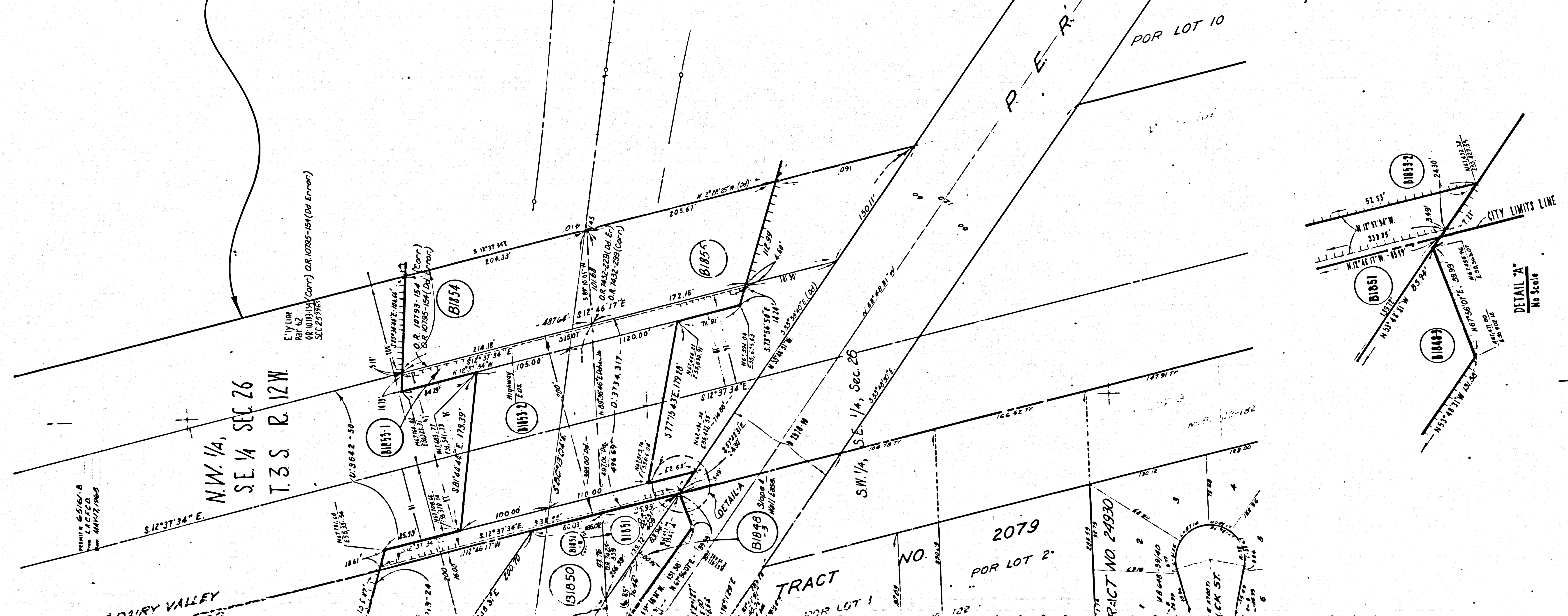
O.R. 41819-141 ET SEQ.

F.M.	21104
OF	A6
A2	

SEE

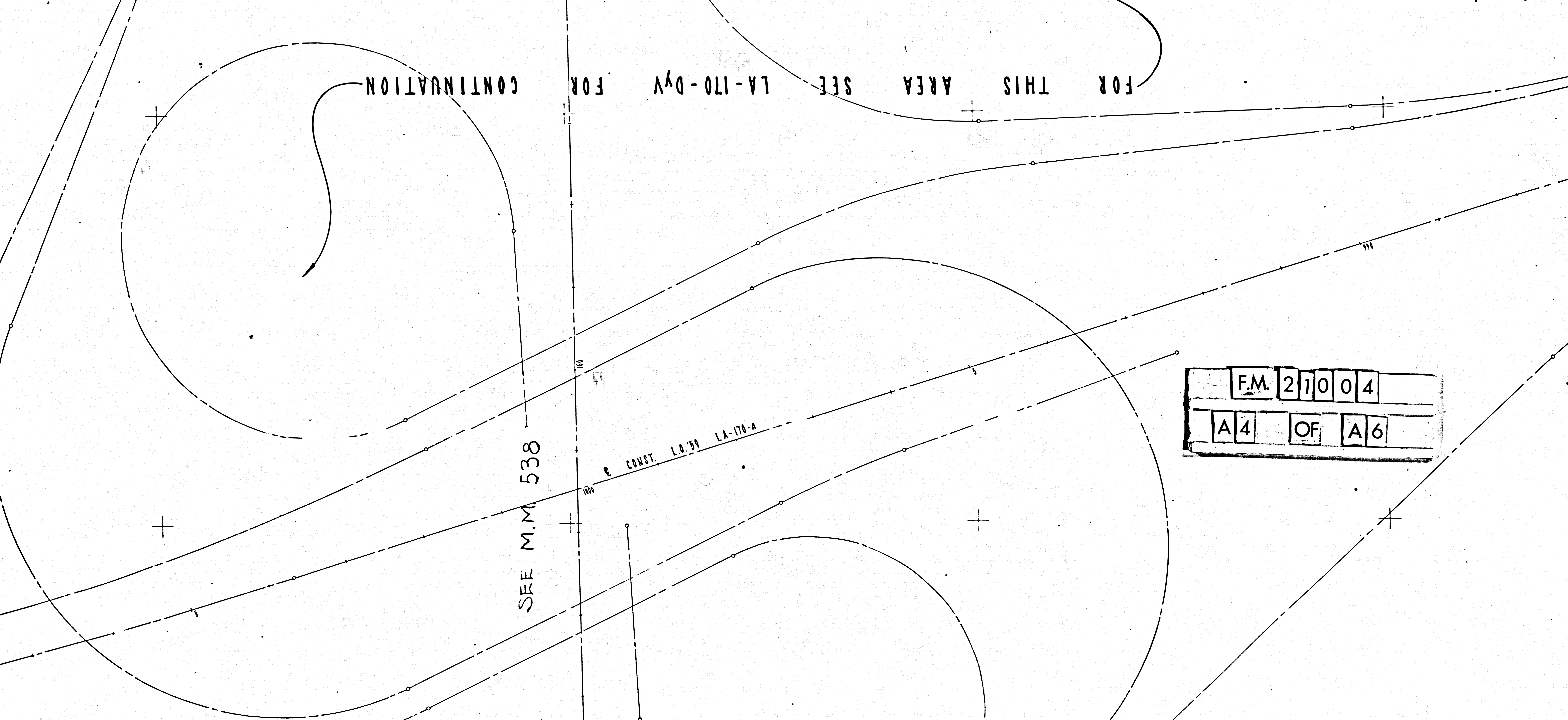
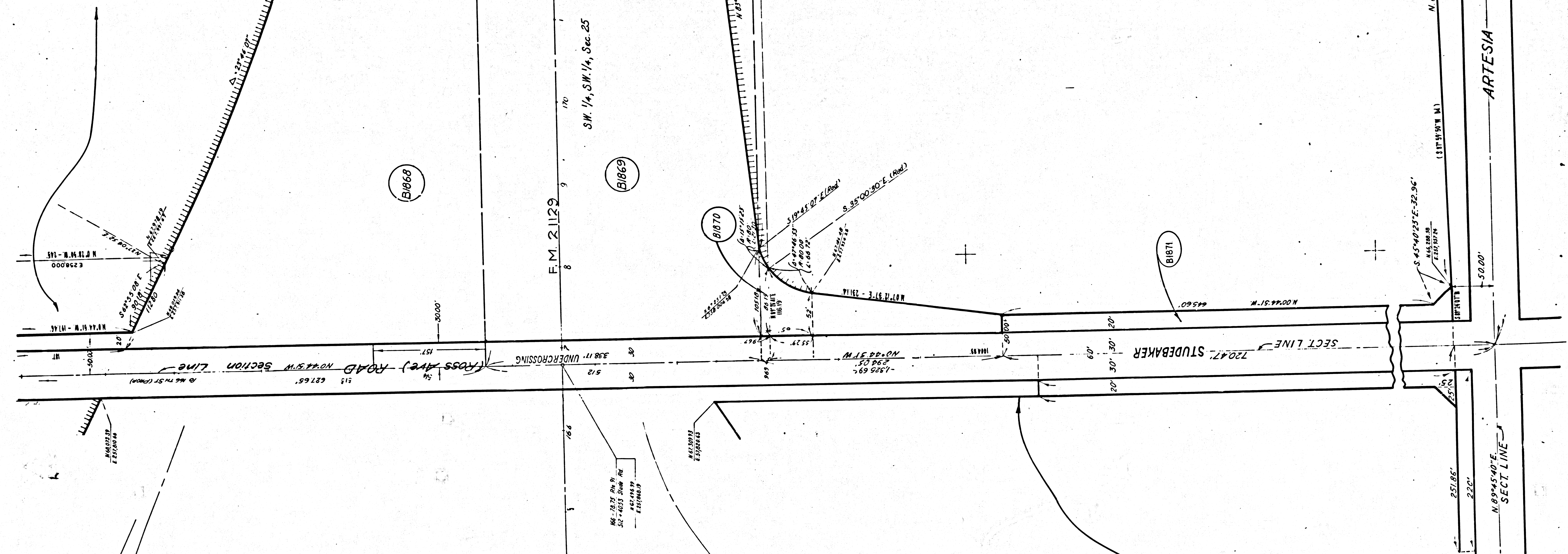
FOR THIS AREA SEE LA-170-D-V FOR CONTINUATION

F.M.	2110	04
A3	OF	A6



DETAIL 2" No Scale

SECTION LINE ST HWY MAP - K.K. 7-10
N 75° 15' W - 114.5'
E 239.000'
N 75° 15' W - 114.5'
E 239.000'
STUDEBAKER
LOAD
627.65
N 75° 15' W - 114.5'
E 239.000'



F.M. 27004
A4 OF A6

SEE M.M. 538

E CONST. L.O. 50 LA-170-A

F.M. 21129
SW 1/4, SW 1/4, Sec. 25

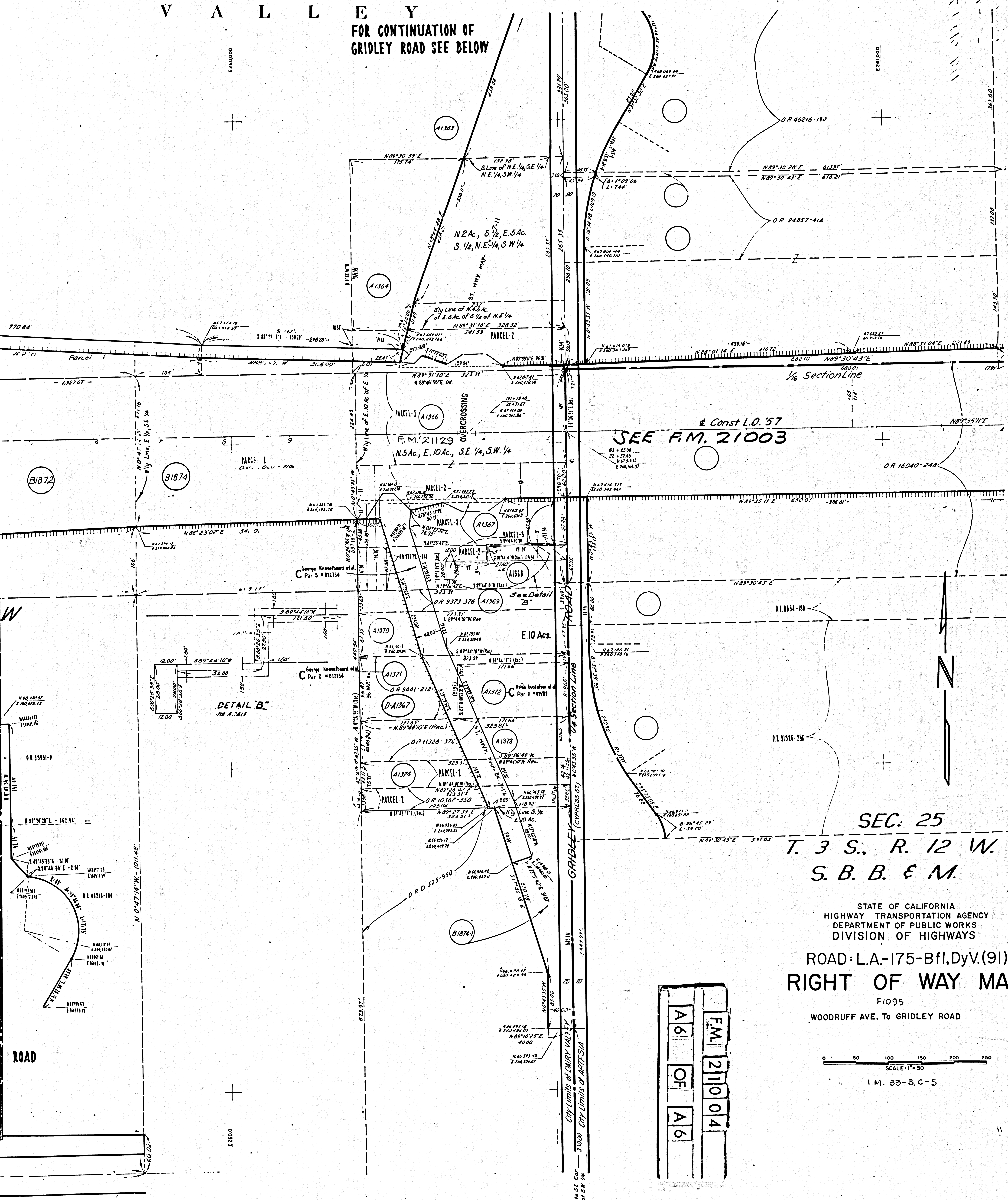
ARTESIA

SECT LINE

720 FT. STUDEBAKER
SECT LINE

FOR THIS AREA SEE LA-170-DY FOR CONTINUATION

V A L L E Y
FOR CONTINUATION OF
GRIDLEY ROAD SEE BELOW



SEC. 25
T. 3 S., R. 12 W.
S. B. B. & M.

STATE OF CALIFORNIA
HIGHWAY TRANSPORTATION AGENCY
DEPARTMENT OF PUBLIC WORKS
DIVISION OF HIGHWAYS
ROAD: L.A.-175-Bfl, DyV.(91)
RIGHT OF WAY MAP
FI095
WOODRUFF AVE. TO GRIDLEY ROAD

0 50 100 150 200 250
SCALE: 1" = 50'
I.M. 33-B, C-5

F.M. 21104
OF
A6

ROAD