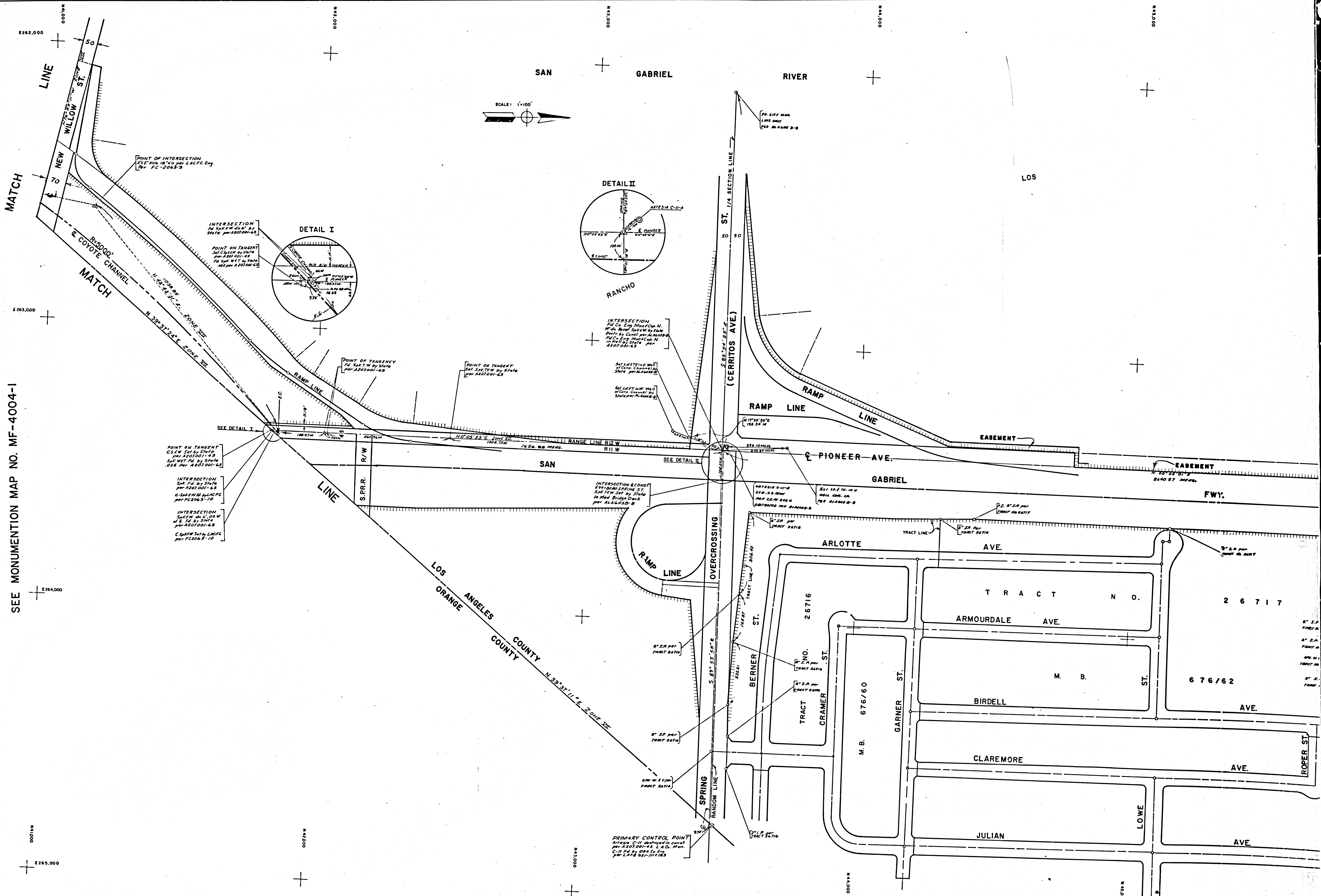
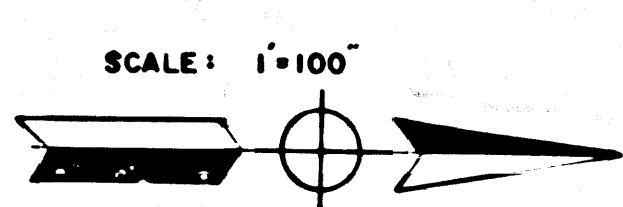
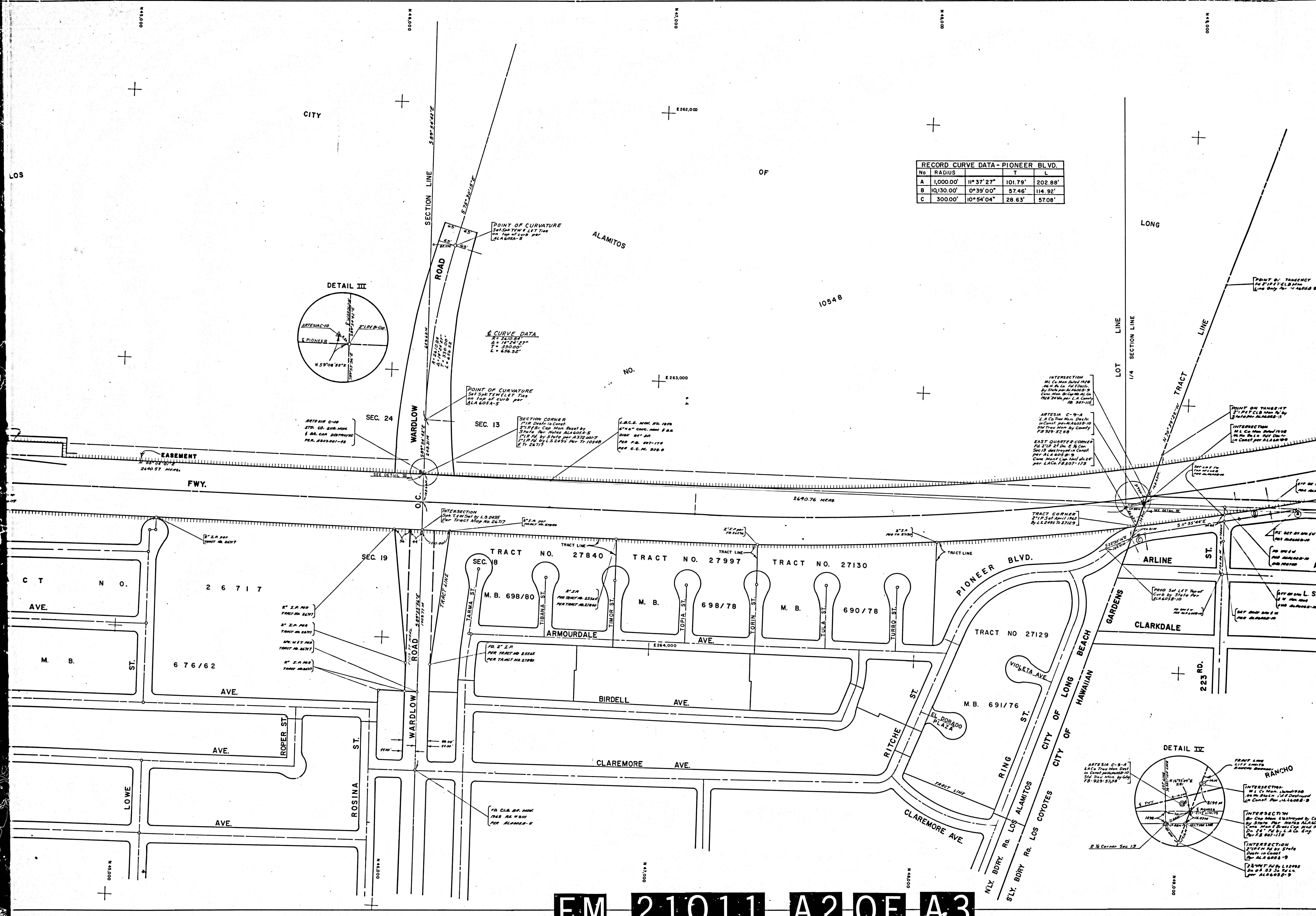


SEE MONUMENTATION MAP NO. MF-4004-1

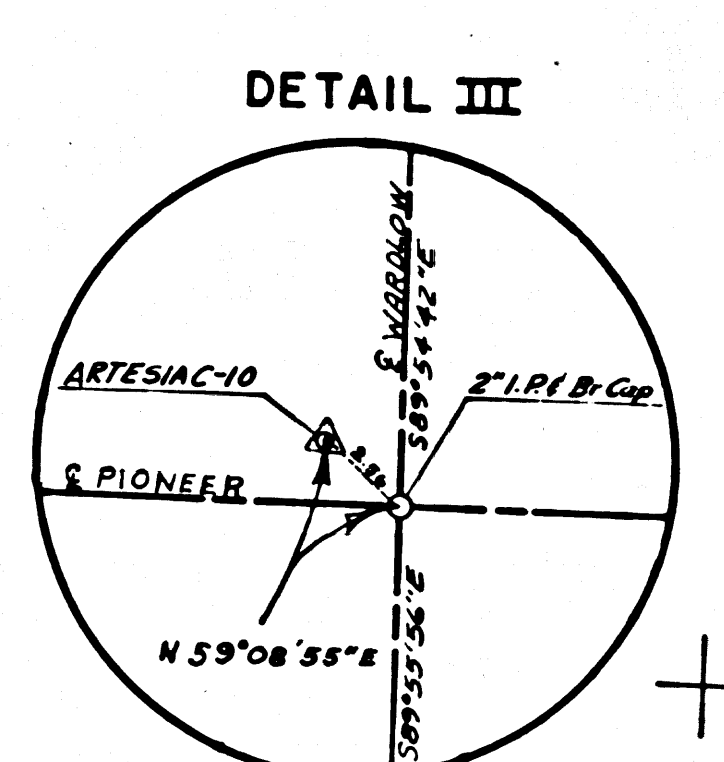


LW 51011



RECORD CURVE DATA - PIONEER BLVD.

No	RADIUS	T	L
A	1,000.00'	11° 37' 27"	101.79' 202.88'
B	10,130.00'	0° 39' 00"	57.46' 114.92'
C	300.00'	10° 54' 04"	28.63' 57.08'



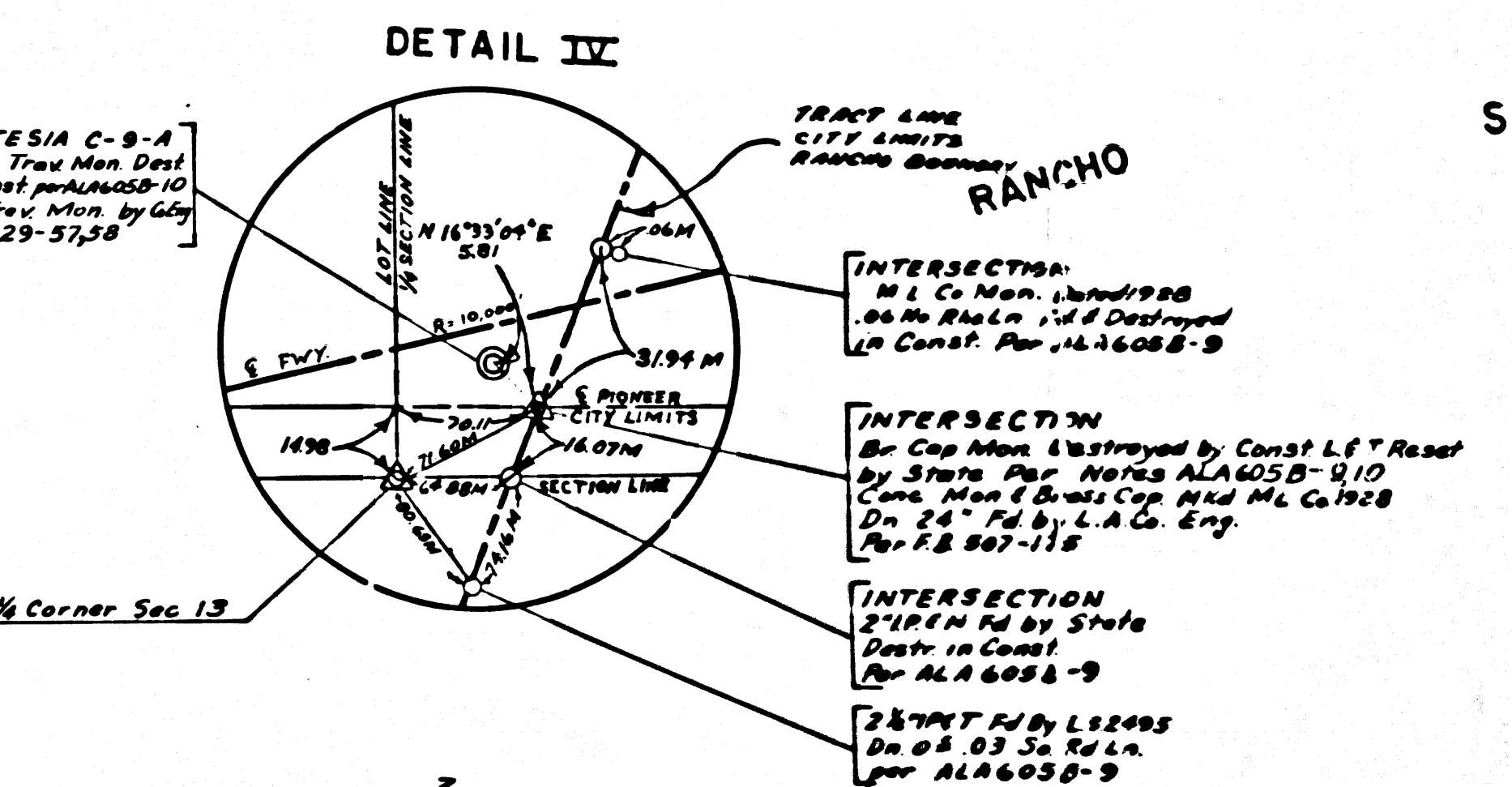
CURVE DATA
 R = 2470.84'
 Δ = 14° 26' 27"
 T = 330.00'
 L = 656.52'

SECTION CORNER
 1/4 CORNER IN CORNER
 27° 18' 18" COR. MON. REEST. BY
 STATE PER NOTES ALA 6052-S
 1/4 COR. BY STATE PER 43220017
 1/4 COR. BY L.S. 2495 PER Tr 10548
 C.T. 26717

L.C.C. MON. NO. 1828
 6" x 6" CONC. MON. I.B.C.
 DIST. 84" DIA.
 PER P.B. 207-174
 PER C.C. NO. 208.0

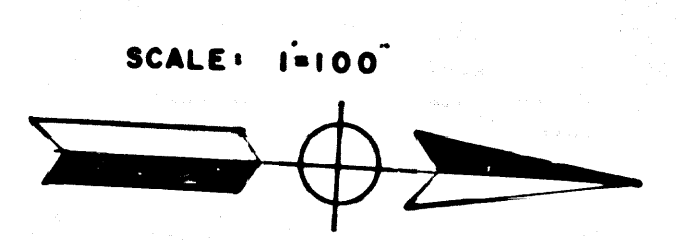
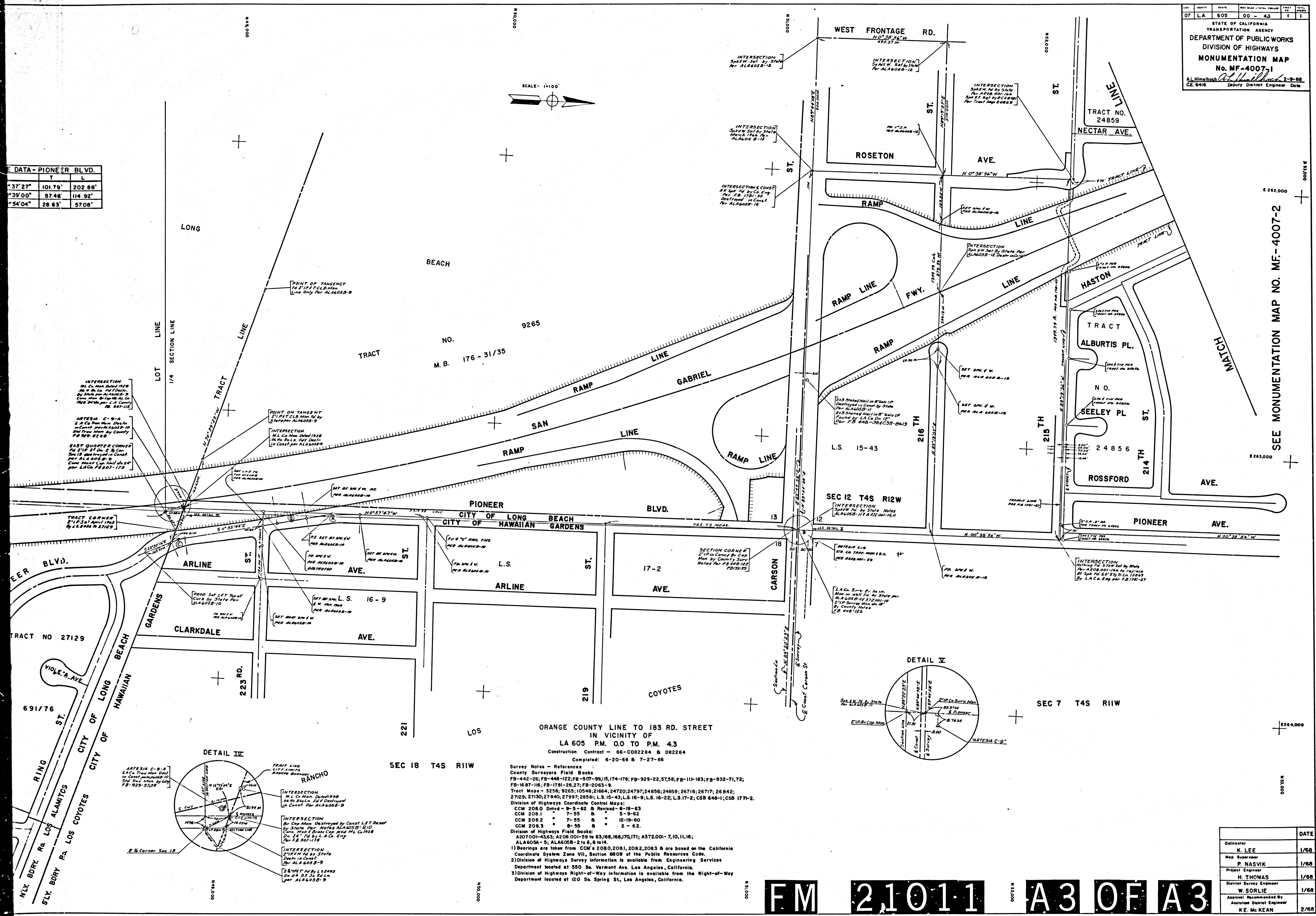
INTERSECTION
 M.C. Man. Dist. 1928
 10' x 10' AL. CO. PER 10111-5
 BY STATE PER ALA 6052-S
 CONC. MON. BY STATE PER 43220017
 1928 24' DIA. PER L.A. COUNTY
 PER 987-112

ARTESIA C-9-A
 L.A. CO. TRAIL MAN. DIST.
 IN CORNER PER ALA 6052-10
 SH. TRAIL MAN. BY COUNTY
 PER 929-5750



DATA - PIONEER BLVD.

T	L
37' 27"	101.79'
39' 00"	57.46'
54' 04"	28.63'
	114.92'
	57.08'



ORANGE COUNTY LINE TO 183 RD. STREET
 IN VICINITY OF
 LA 605 P.M. 00 TO P.M. 43
 Construction Contract - 66-C082284 & 082264
 Completed: 6-20-66 & 7-27-66

Survey Notes - References
 County Surveyors Field Books
 FB-442-26; FB-448-122; FB-507-99,115,174-176; FB-929-22, 57, 58; FB-111-103; FB-932-71, 72;
 FB-1687-116; FB-1781-26, 27; FB-2063-9.
 Tract Maps - 3256; 9265-1; 10549; 21664; 24720; 24797; 24856; 24859; 26716; 26717; 26842;
 27129; 27130; 27840; 27937; 28561; L.S. 15-43; L.S. 16-9; L.S. 16-22; L.S. 17-2; CSB 648-1; CSB 177-2.
 Division of Highways Coordinate Control Maps:
 CCM 208.0 Dated - 9-5-62 & Revised - 8-19-63
 CCM 208.1 " 7-55 " " 5-9-62
 CCM 208.2 " 7-55 " " 12-19-60
 CCM 208.3 " 8-55 " " 2-62.
 Division of Highways Field Books:
 A207001-4363; A208001-59 to 63, 168, 168, 170, 171; A372001-7, 10, 11, 16;
 ALA 605A-5; ALA 605B-2 to 8, & 10, 14.
 1) Bearings are taken from CCM's 208.0, 208.1, 208.2, 208.3 & are based on the California
 Coordinate System Zone VII, Section 8809 of the Public Resources Code.
 2) Division of Highways Survey Information is available from Engineering Services
 Department located at 550 So. Vermont Ave., Los Angeles, California.
 3) Division of Highways Right-of-Way Information is available from the Right-of-Way
 Department located at 120 So. Spring St., Los Angeles, California.

DATE	NAME
1/68	K. LEE
1/68	P. NASVIK
1/68	H. THOMAS
1/68	W. SORLIE
2/68	K.E. MCKEAN

FM 21011 A3 OF A3